

Hidalgo County Report, 2004

Demographics

In 2004, there were 3,595 licensed drivers in Hidalgo County. Of these, there were 1,658 females and 1,937 males. The population in Hidalgo County was 5,186. The total number of crashes in 2004 was 98, yielding a crash rate of 19 per thousand people (the total number of crashes 98 divided by the population 5,186 multiplied by 1,000). The corresponding rate for the state was 27 per thousand people.

General Crash Information

Since 2001 the number of crashes has shown a downward trend. Fatal and injury crashes have also shown a downward trend since 2001. Belt usage (as a percentage) has increased from last year, while belt usage in crashes involving visible and incapacitating injuries has decreased.

Alcohol-related Crash Information

Information about alcohol-involved crashes is included in all sections of this report. Of the 31 people convicted of DWI in Hidalgo County in 2004, 71 percent were first-time DWI convictions (number of first convictions 22 divided by the total number of people convicted 31 multiplied by 100). The corresponding percentage for the state was 62.

Crash Specifics

Crashes involving other vehicles were the most common crash class, accounting for 31 percent of all crashes. Crashes involving overturns were the crash class which most often resulted in fatalities. Passenger cars were the vehicle type most often involved in crashes, accounting for 30 percent of all vehicles in crashes. Pickups accounted for 26 percent of vehicles involved in crashes. Together these two vehicle types comprised 52 percent of the vehicles involved in injury crashes. The three most common top contributing factors were excessive speed, driver inattention, and mechanical defect. There were three fatal crashes in 2004. The most common top contributing factor for the fatal crashes was excessive speed.

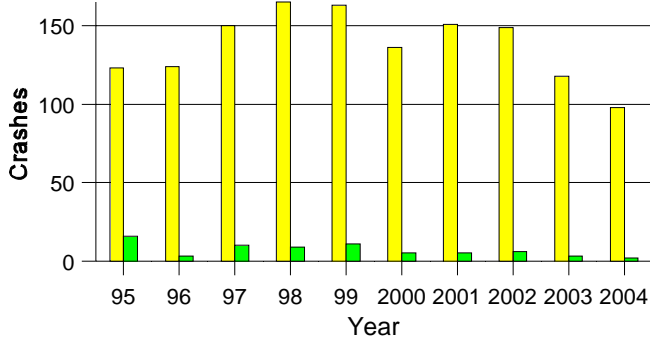
People in Crashes

Overall, males were 77 percent of drivers in crashes, although they account for only 54 percent of licensed drivers in Hidalgo County. There was one pedestrian involved in a crash. In 2004, no 'teenagers' or young adults were killed in crashes in Hidalgo County. Statewide 18 percent of alcohol-involved drivers were under 21; in Hidalgo County none were under 21. There were two alcohol-involved drivers in crashes, a 40-44 year old female and a 50-54 year old male.

Note: The 1999 crash file contains 15% fewer crashes than the 1998 file. This may be due to problems implementing the new system after the old system failed, or to under reporting. Care should be used in interpreting differences between 1999 and other years in this report.

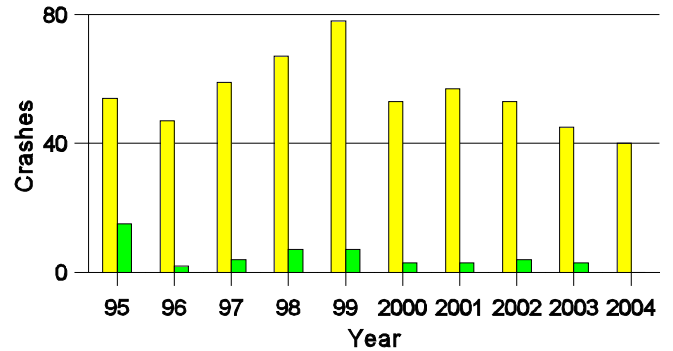
- Location of arrest/conviction was determined by police agency/court location, not driver residence.
- Crashes and drivers were counted by the city of occurrence/residence.
- Population was counted according to the Census definition, using 2004 estimates.
- Young adults are people between the ages of 20 and 24.
- 'Teenagers' are people between the ages of 15 and 19.
- Tables only include variable values for which there are data.

**Crashes in Hidalgo County
by Alcohol Involvement**



All Crashes
 Alcohol-involved Crashes

**Fatal and Injury Crashes in Hidalgo County
by Alcohol Involvement**



All Fatal and Injury Crashes
 Alcohol-involved Fatal and Injury Crashes

Passenger Vehicle Seatbelt Usage and Injuries in Hidalgo County, 2002-2004

Injury Level	2004		2003		2002	
	Total	No Belt	Total	No Belt	Total	No Belt
Killed	3	2	2	0	7	3
Incapacitating injury	16	3	10	2	18	1
Visible injury	26	4	33	2	24	6
Complaint of injury	13	0	20	2	29	2
Unhurt	133	4	150	9	180	8
Total	191	13	215	15	258	20

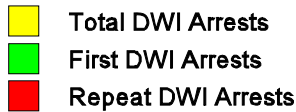
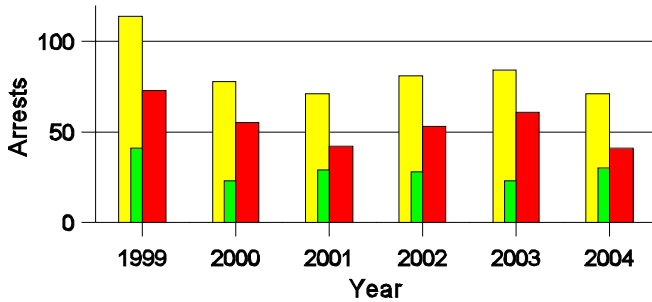
**Lifetime DWI Convictions for Drivers
Convicted of DWI Violations in Hidalgo County, 2004**

Convictions	Since 1999	Since 1980
1st	26	22
2nd	4	3
3rd	1	5
4th	0	1
5th	0	0
6th	0	0
7th	0	0
8th	0	0
9th	0	0
10 or more	0	0
Total	31	31

Convictions are counts of people convicted of DWI by 7/2005 for violations in 2004 in Hidalgo County. Convictions are not comparable to arrests.

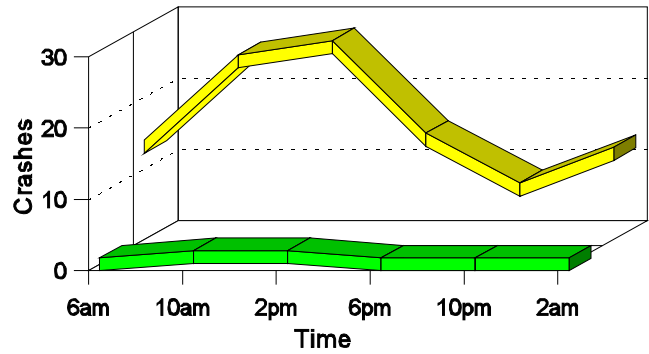
DWI Arrests in Hidalgo County

Showing First Arrests and Repeat Offenders



Crashes in Hidalgo County

by Hour and Alcohol Involvement



Crashes in Hidalgo County by Class, 2004

Class	Crashes					People	
	Total	% of Total	Fatal	% of Fatal	Injury	Killed	Injured
Other vehicle	30	31	1	17	10	1	22
Pedestrian	1	1	1	17	0	1	0
Fixed object	13	13	0	0	5	0	8
Parked vehicle	5	5	1	17	1	1	2
Overturn	25	26	3	50	14	3	28
Other non-collision	8	8	0	0	0	0	0
Railroad train	1	1	0	0	1	0	1
Animal	12	12	0	0	3	0	6
Other object	3	3	0	0	0	0	0
Total	98	100	6	100	34	6	67

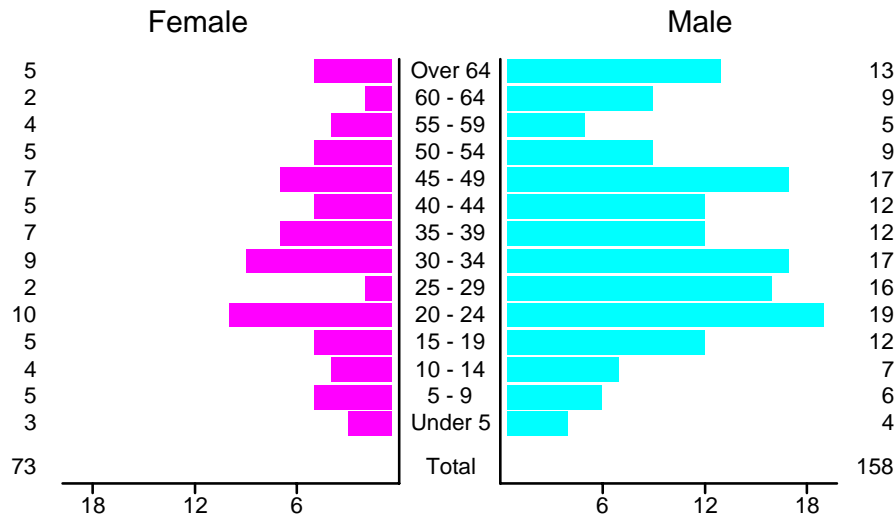
Crashes in Hidalgo County by Vehicle Type, 2004

Vehicle Type	Vehicles					People	
	Total	% of Total	Fatal	% of Fatal	Injury	Killed	Injured
Passenger car	43	30	1	10	15	1	20
Pickup	36	26	2	20	9	1	12
Semi	30	21	1	10	8	0	6
Motorcycle	2	1	0	0	2	0	2
Pedestrian	1	1	1	10	0	1	0
Van/4 WD	24	17	3	30	11	2	26
Other	1	1	1	10	0	1	1
Unknown	4	3	1	10	1	0	0
Total	141	100	10	100	46	6	67

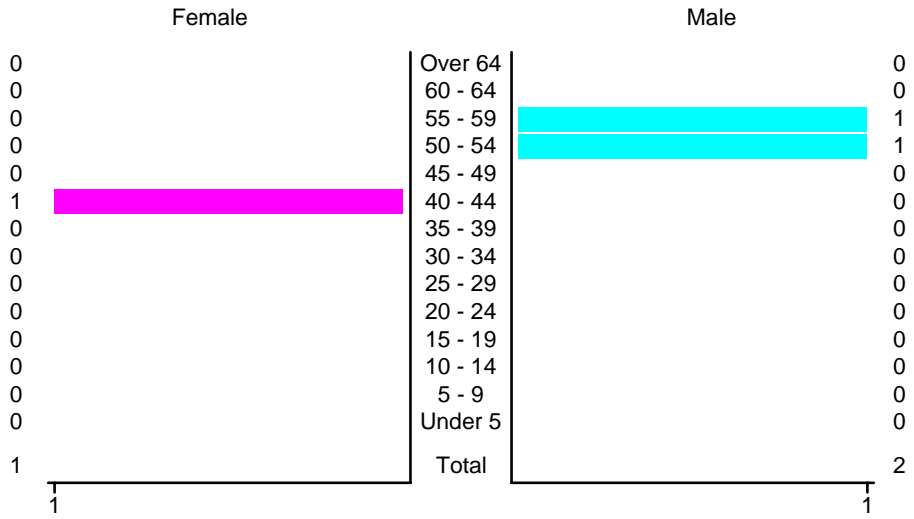
Crashes in Hidalgo County by Top Contributing Factor, 2004

Contributing Factor	Crashes				People		
	Total	% of Total	Fatal	% of Fatal	Injury	Killed	Injured
Alcohol involvement	2	2	0	0	0	0	0
Red light running	3	3	0	0	1	0	2
Failing to yield	2	2	0	0	0	0	0
Excessive speed	24	24	2	33	11	2	23
Driving left of center	3	3	1	17	0	1	6
Following too close	5	5	0	0	3	0	3
Improper turning	3	3	0	0	3	0	3
Improper overtaking	2	2	0	0	2	0	6
Improper backing	1	1	0	0	0	0	0
Mechanical defect	12	12	1	17	2	1	5
Driver inattention	19	19	1	17	9	1	16
Improper driving	1	1	0	0	0	0	0
Other	21	21	1	17	3	1	3
Total	98	100	6	100	34	6	67

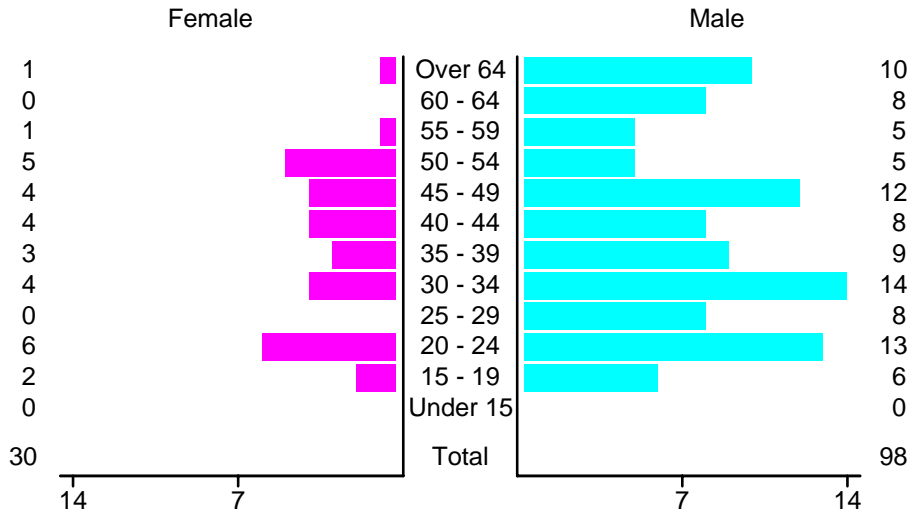
People in Crashes by Age and Sex in Hidalgo County, 2004



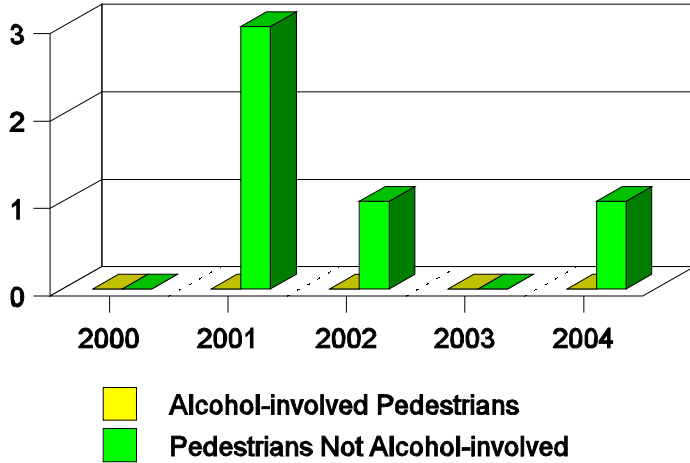
People in Alcohol-Involved Crashes in Hidalgo County, 2004 by Age and Sex



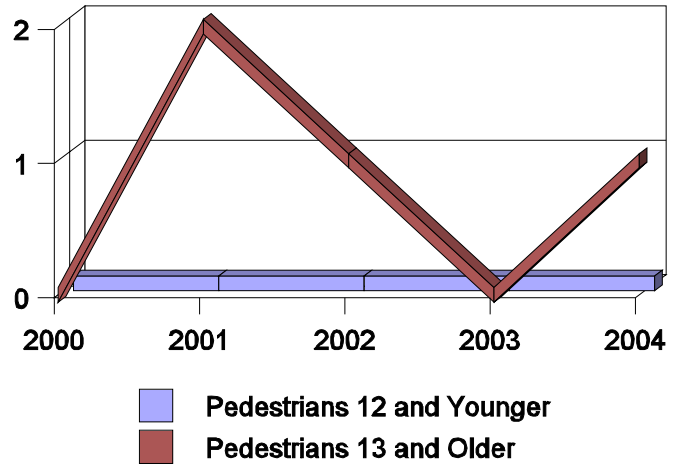
Drivers in Crashes by Age and Sex in Hidalgo County, 2004



**Pedestrian Crashes in Hidalgo County
by Pedestrian Alcohol-involvement, 2000-2004**



**Pedestrian Crashes in Hidalgo County
by Age Group, 2000-2004**



'Teenagers' and Young Adults in Crashes in Hidalgo County by Vehicle Type, 2004

Vehicle	'Teenage' Drivers			Young Adult Drivers		
	Total	Fatal	Injury	Total	Fatal	Injury
Passenger car	3	0	2	7	0	0
Pickup	3	0	1	4	0	1
Semi	0	0	0	1	0	1
Motorcycle	0	0	0	1	0	1
Van/4 WD	2	0	2	6	1	4
Total	8	0	5	19	1	7

'Teenagers' and Young Adults in Crashes in Hidalgo County, 1995-2004

Year	'Teenagers'				Young Adults			
	All Crashes		Alcohol Crashes		All Crashes		Alcohol Crashes	
	Killed	Injured	Killed	Injured	Killed	Injured	Killed	Injured
2004	0	8	0	0	0	10	0	0
2003	0	9	0	1	2	10	1	0
2002	0	13	0	0	0	4	0	0
2001	0	9	0	2	1	10	0	1
2000	0	13	0	2	3	16	0	2
1999	0	14	0	1	0	16	0	5
1998	0	10	0	0	1	11	0	1
1997	1	9	0	2	1	14	0	2
1996	0	16	0	1	0	13	0	1
1995	0	8	0	1	0	12	0	2