

Taos County Report, 2004

Demographics

In 2004, there were 23,646 licensed drivers in Taos County. Of these, there were 12,084 females and 11,562 males. The population in Taos County was 31,464. The total number of crashes in 2004 was 687, yielding a crash rate of 22 per thousand people (the total number of crashes 687 divided by the population 31,464 multiplied by 1,000). The corresponding rate for the state was 27 per thousand people.

General Crash Information

Since 1995 the number of crashes has shown no consistent pattern. Fatal and injury crashes have also shown no consistent pattern since 1995. Belt usage (as a percentage) has increased from last year, while belt usage in crashes involving visible and incapacitating injuries has also increased.

Alcohol-related Crash Information

Information about alcohol-involved crashes is included in all sections of this report. Of the 100 people convicted of DWI in Taos County in 2004, 62 percent were first-time DWI convictions (number of first convictions 62 divided by the total number of people convicted 100 multiplied by 100). The corresponding percentage for the state was 62.

Crash Specifics

Crashes involving other vehicles were the most common class, accounting for 63 percent of all crashes. Crashes involving other vehicles and overturns were the most common crash classes which resulted in fatalities. Passenger cars were the vehicle type most often involved in crashes, accounting for 48 percent of all vehicles in crashes. Pickups accounted for 26 percent of vehicles involved in crashes. Together these two vehicle types comprised 75 percent of the vehicles involved in injury crashes. The three most common top contributing factors were following too close, excessive speed, and driver inattention. There were 10 fatal crashes in 2004. The most common top contributing factors for the fatal crashes were alcohol involvement and driving left of center.

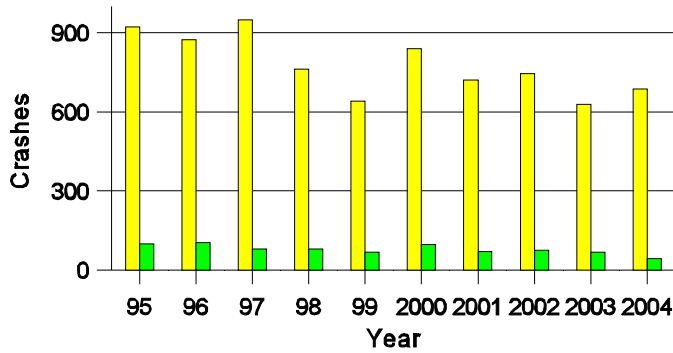
People in Crashes

Overall, males were 55 percent of drivers in crashes, although they account for only 49 percent of licensed drivers in Taos County. There were four pedestrians involved in crashes. In 2004, two 'teenagers' and one young adult were killed in crashes in Taos County. Statewide 18 percent of alcohol-involved drivers were under 21; in Taos County 21 percent were under 21.

Note: The 1999 crash file contains 15% fewer crashes than the 1998 file. This may be due to problems implementing the new system after the old system failed, or to under reporting. Care should be used in interpreting differences between 1999 and other years in this report.

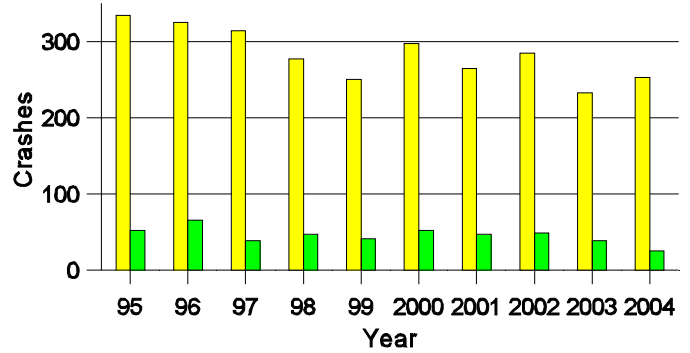
- Location of arrest/conviction was determined by police agency/court location, not driver residence.
- Crashes and drivers were counted by the city of occurrence/residence.
- Population was counted according to the Census definition, using 2004 estimates.
- Young adults are people between the ages of 20 and 24.
- 'Teenagers' are people between the ages of 15 and 19.
- Tables only include variable values for which there are data.

Crashes in Taos County by Alcohol Involvement



All Crashes
 Alcohol-involved Crashes

Fatal and Injury Crashes in Taos County by Alcohol Involvement



All Fatal and Injury Crashes
 Alcohol-involved Fatal and Injury Crashes

Passenger Vehicle Seatbelt Usage and Injuries in Taos County, 2002-2004

Injury Level	2004		2003		2002	
	Total	No Belt	Total	No Belt	Total	No Belt
Killed	7	2	4	3	4	2
Incapacitating injury	22	3	34	9	38	14
Visible injury	85	9	67	14	102	25
Complaint of injury	198	6	186	4	243	16
Unhurt	1,198	14	1,096	28	1,202	35
Total	1,510	34	1,387	58	1,589	92

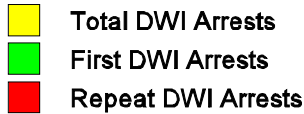
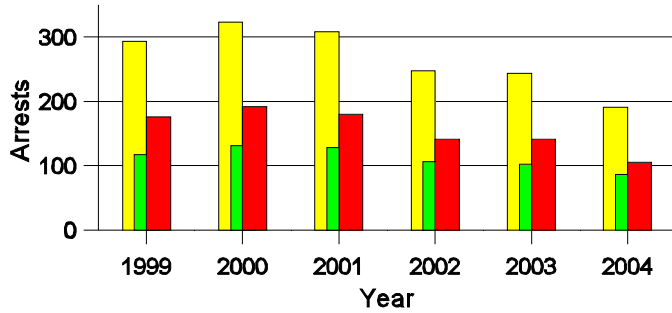
Lifetime DWI Convictions for Drivers Convicted of DWI Violations in Taos County, 2004

Convictions	Since 1999	Since 1980
1st	83	62
2nd	15	20
3rd	2	12
4th	0	5
5th	0	1
6th	0	0
7th	0	0
8th	0	0
9th	0	0
10 or more	0	0
Total	100	100

Convictions are counts of people convicted of DWI by 7/2005 for violations in 2004 in Taos County.
 Convictions are not comparable to arrests.

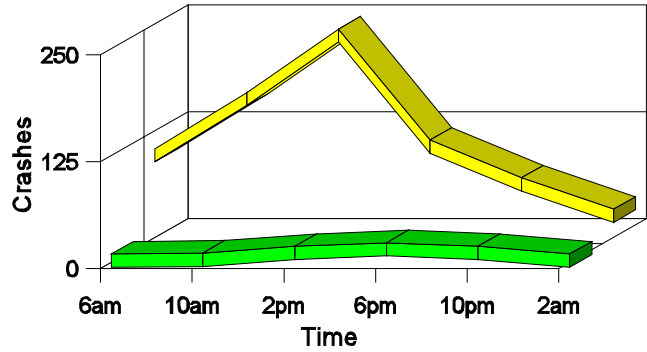
DWI Arrests in Taos County

Showing First Arrests and Repeat Offenders



Crashes in Taos County

by Hour and Alcohol Involvement



Crashes in Taos County by Class, 2004

Class	Crashes					People	
	Total	% of Total	Fatal	% of Fatal	Injury	Killed	Injured
Other vehicle	434	63	4	40	153	6	233
Pedestrian	4	1	0	0	4	0	4
Fixed object	92	13	0	0	31	0	38
Veh. on other roadway	2	0	2	20	0	3	5
Parked vehicle	16	2	0	0	1	0	3
Overturn	72	10	4	40	39	4	48
Other non-collision	11	2	0	0	0	0	0
Pedalcyclist	4	1	0	0	4	0	4
Animal	41	6	0	0	9	0	11
Other object	11	2	0	0	2	0	2
Total	687	100	10	100	243	13	348

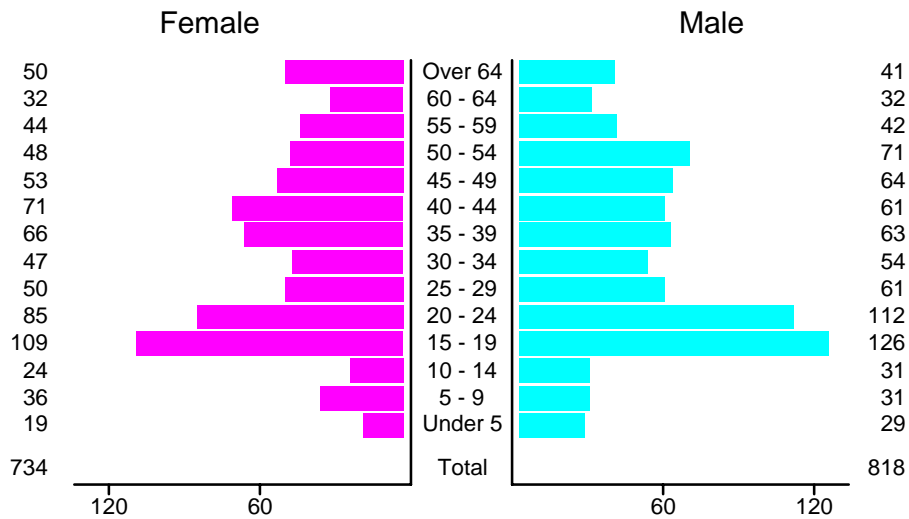
Crashes in Taos County by Vehicle Type, 2004

Vehicle Type	Vehicles					People	
	Total	% of Total	Fatal	% of Fatal	Injury	Killed	Injured
Passenger car	573	48	8	47	212	8	203
Pickup	313	26	2	12	112	1	67
Semi	16	1	2	12	4	0	2
Bus	4	0	0	0	0	0	0
Motorcycle	20	2	3	18	12	3	14
Pedalcyclist	6	1	0	0	6	0	6
Pedestrian	4	0	0	0	4	0	4
Van/4 WD	213	18	2	12	72	1	48
Other	4	0	0	0	0	0	0
Unknown	38	3	0	0	12	0	4
Total	1,191	100	17	100	434	13	348

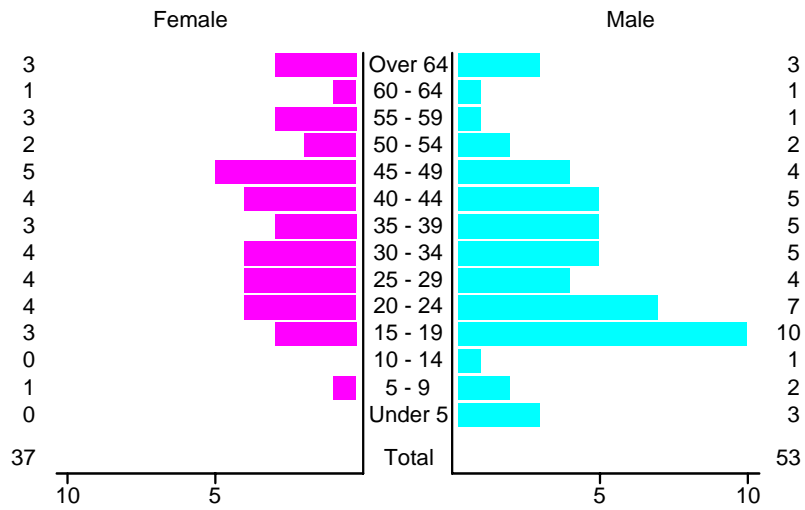
Crashes in Taos County by Top Contributing Factor, 2004

Contributing Factor	Crashes				People		
	Total	% of Total	Fatal	% of Fatal	Injury	Killed	Injured
Alcohol involvement	44	6	3	30	22	5	43
Red light running	12	2	1	10	3	1	6
Failing to yield	112	16	2	20	32	2	46
Excessive speed	121	18	0	0	53	0	74
Driving left of center	22	3	3	30	10	4	21
Following too close	133	19	0	0	57	0	73
Improper turning	18	3	0	0	5	0	10
Improper overtaking	12	2	0	0	1	0	1
Improper backing	12	2	0	0	2	0	4
Mechanical defect	7	1	0	0	2	0	2
Driver inattention	113	16	1	10	41	1	51
Other	81	12	0	0	15	0	17
Total	687	100	10	100	243	13	348

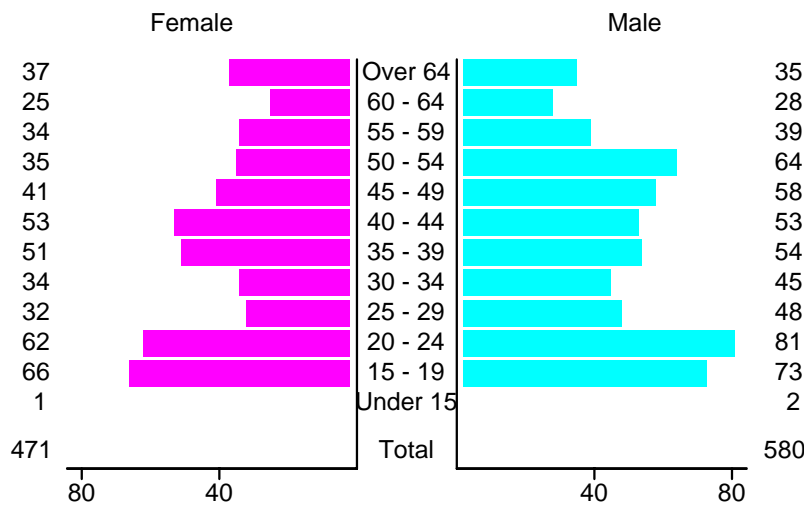
People in Crashes by Age and Sex in Taos County, 2004



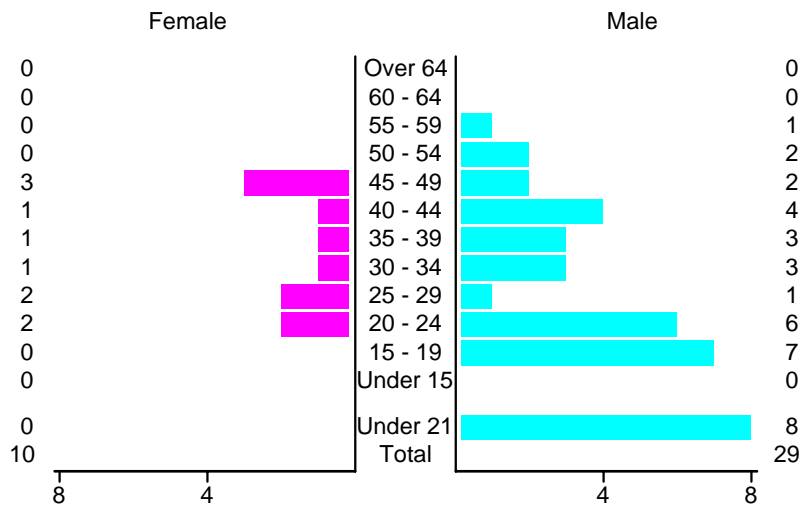
People in Alcohol-Involved Crashes in Taos County, 2004 by Age and Sex



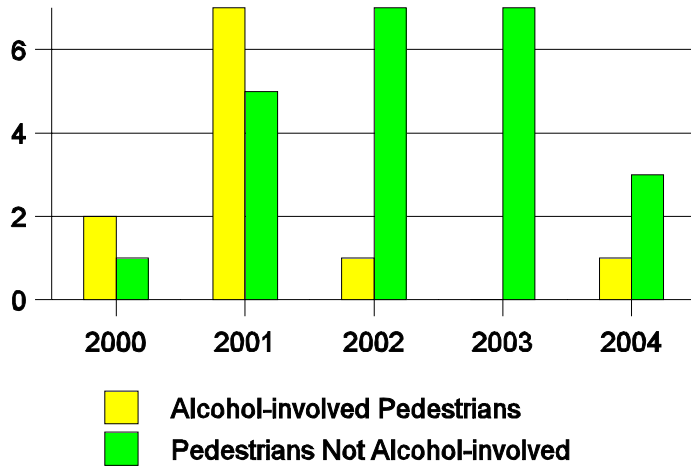
Drivers in Crashes by Age and Sex in Taos County, 2004



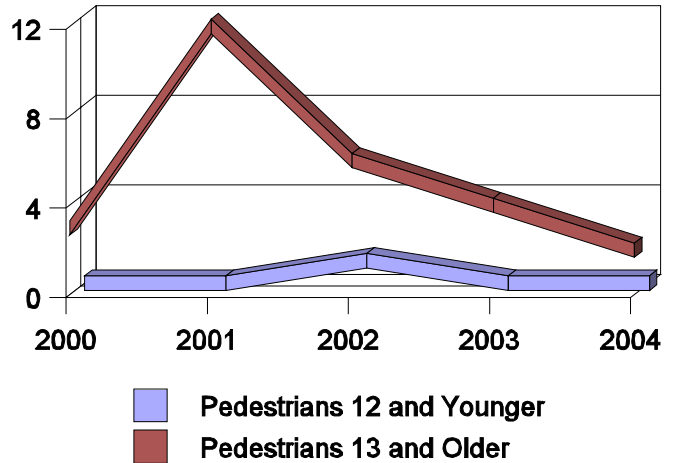
Alcohol-Involved Drivers in Crashes in Taos County, 2004 by Age and Sex



**Pedestrian Crashes in Taos County
by Pedestrian Alcohol-involvement, 2000-2004**



**Pedestrian Crashes in Taos County
by Age Group, 2000-2004**



'Teenagers' and Young Adults in Crashes in Taos County by Vehicle Type, 2004

Vehicle	'Teenage' Drivers			Young Adult Drivers		
	Total	Fatal	Injury	Total	Fatal	Injury
Passenger car	85	2	38	97	1	39
Pickup	30	1	11	27	0	9
Motorcycle	0	0	0	1	0	1
Pedalcyclist	1	0	1	0	0	0
Pedestrian	1	0	1	0	0	0
Van/4 WD	24	0	7	17	0	7
Unknown	0	0	0	1	0	1
Total	141	3	58	143	1	57

'Teenagers' and Young Adults in Crashes in Taos County, 1995-2004

Year	'Teenagers'				Young Adults			
	All Crashes		Alcohol Crashes		All Crashes		Alcohol Crashes	
	Killed	Injured	Killed	Injured	Killed	Injured	Killed	Injured
2004	2	55	2	9	1	45	1	5
2003	0	44	0	5	2	42	1	9
2002	0	73	0	13	1	43	1	9
2001	2	60	2	5	2	39	1	12
2000	2	85	2	19	3	56	2	6
1999	0	55	0	10	0	36	0	10
1998	0	70	0	18	1	41	1	9
1997	0	83	0	7	1	39	0	6
1996	1	99	0	24	1	43	1	7
1995	2	76	1	8	1	46	1	9