

# Doña Ana County Report, 2004

## Demographics

In 2004, there were 119,883 licensed drivers in Doña Ana County. Of these, there were 59,206 females and 60,676 males. The population in Doña Ana County was 186,095. The total number of crashes in 2004 was 4,213, yielding a crash rate of 23 per thousand people (the total number of crashes 4,213 divided by the population 186,095 multiplied by 1,000). The corresponding rate for the state was 27 per thousand people.

## General Crash Information

Since 1995 the number of crashes has shown no consistent pattern. Fatal and injury crashes have also shown no consistent pattern since 1995. Belt usage (as a percentage) has increased from last year, while belt usage in crashes involving visible and incapacitating injuries has also increased.

## Alcohol-related Crash Information

Information about alcohol-involved crashes is included in all sections of this report. Of the 798 people convicted of DWI in Doña Ana County in 2004, 66 percent were first-time DWI convictions (number of first convictions 526 divided by the total number of people convicted 798 multiplied by 100). The corresponding percentage for the state was 62.

## Crash Specifics

Crashes involving other vehicles were the most common class, accounting for 71 percent of all crashes. Crashes involving overturns and other vehicles were the most common crash classes which resulted in fatalities. Passenger cars were the vehicle type most often involved in crashes, accounting for 51 percent of all vehicles in crashes. Pickups accounted for 24 percent of vehicles involved in crashes. Together these two vehicle types comprised 75 percent of the vehicles involved in injury crashes. The three most common top contributing factors were driver inattention, failing to yield, and following too close. There were 33 fatal crashes in 2004. The most common top contributing factor for the fatal crashes was alcohol involvement.

## People in Crashes

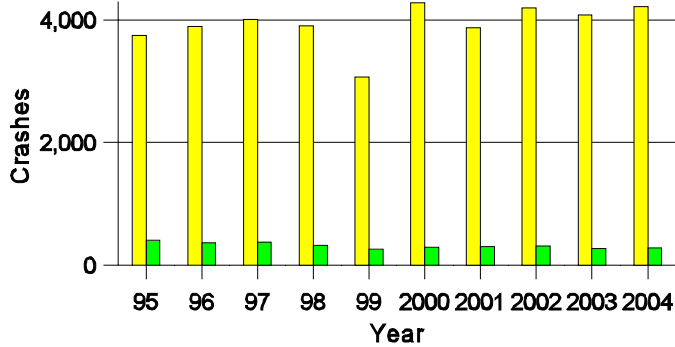
Overall, males were 55 percent of drivers in crashes, although they account for only 51 percent of licensed drivers in Doña Ana County. More pedestrians were involved in crashes this year than last year. In 2004, eight 'teenagers' and nine young adults were killed in crashes in Doña Ana County. Statewide 18 percent of alcohol-involved drivers were under 21; in Doña Ana County 25 percent were under 21.

**Note:** The 1999 crash file contains 15% fewer crashes than the 1998 file. This may be due to problems implementing the new system after the old system failed, or to under reporting. Care should be used in interpreting differences between 1999 and other years in this report.

- Location of arrest/conviction was determined by police agency/court location, not driver residence.
- Crashes and drivers were counted by the city of occurrence/residence.
- Population was counted according to the Census definition, using 2004 estimates.
- Young adults are people between the ages of 20 and 24.
- 'Teenagers' are people between the ages of 15 and 19.
- Tables only include variable values for which there are data.

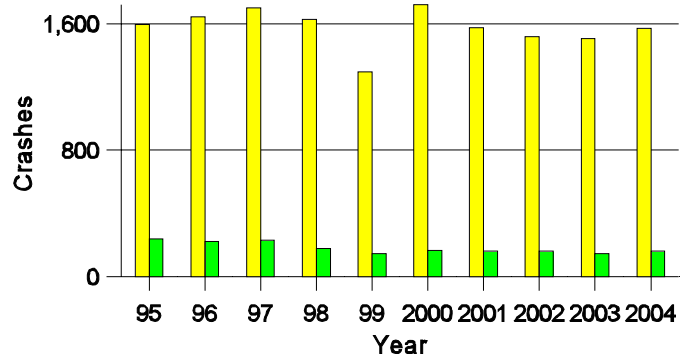
### Crashes in Doña Ana County

#### by Alcohol Involvement



### Fatal and Injury Crashes in Doña Ana County

#### by Alcohol Involvement



### Passenger Vehicle Seatbelt Usage and Injuries in Doña Ana County, 2002-2004

Injury Level	2004		2003		2002	
	Total	No Belt	Total	No Belt	Total	No Belt
Killed	32	19	23	16	21	14
Incapacitating injury	254	35	226	47	254	37
Visible injury	361	40	424	47	416	55
Complaint of injury	1,369	28	1,322	41	1,376	32
Unhurt	8,149	68	7,843	98	8,364	111
<b>Total</b>	<b>10,165</b>	<b>190</b>	<b>9,838</b>	<b>249</b>	<b>10,431</b>	<b>249</b>

### Lifetime DWI Convictions for Drivers

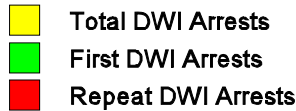
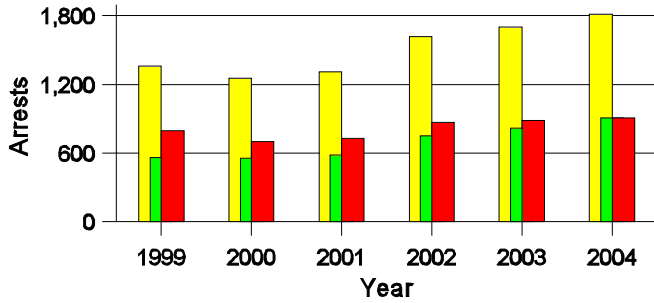
#### Convicted of DWI Violations in Doña Ana County, 2004

Convictions	Since 1999	Since 1980
1st	648	526
2nd	117	138
3rd	26	78
4th	5	34
5th	2	11
6th	0	5
7th	0	3
8th	0	0
9th	0	1
10 or more	0	2
<b>Total</b>	<b>798</b>	<b>798</b>

Convictions are counts of people convicted of DWI by 7/2005 for violations in 2004 in Doña Ana County. Convictions are not comparable to arrests.

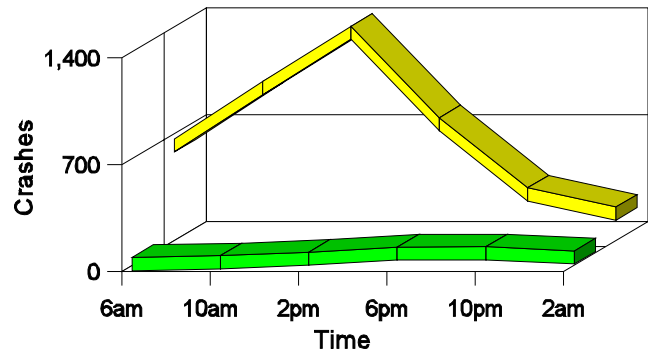
### DWI Arrests in Doña Ana County

Showing First Arrests and Repeat Offenders



### Crashes in Doña Ana County

by Hour and Alcohol Involvement



### Crashes in Doña Ana County by Class, 2004

Class	Crashes					People	
	Total	% of Total	Fatal	% of Fatal	Injury	Killed	Injured
Other vehicle	2,975	71	7	21	1,135	7	1,743
Pedestrian	44	1	3	9	37	3	38
Fixed object	504	12	0	0	155	0	197
Veh. on other roadway	2	0	0	0	0	0	0
Parked vehicle	288	7	0	0	20	0	27
Overturn	239	6	19	58	133	30	221
Other non-collision	76	2	2	6	22	2	30
Pedalcyclist	26	1	1	3	25	1	25
Railroad train	1	0	1	3	0	2	0
Animal	24	1	0	0	4	0	5
Other object	34	1	0	0	5	0	5
<b>Total</b>	<b>4,213</b>	<b>100</b>	<b>33</b>	<b>100</b>	<b>1,536</b>	<b>45</b>	<b>2,291</b>

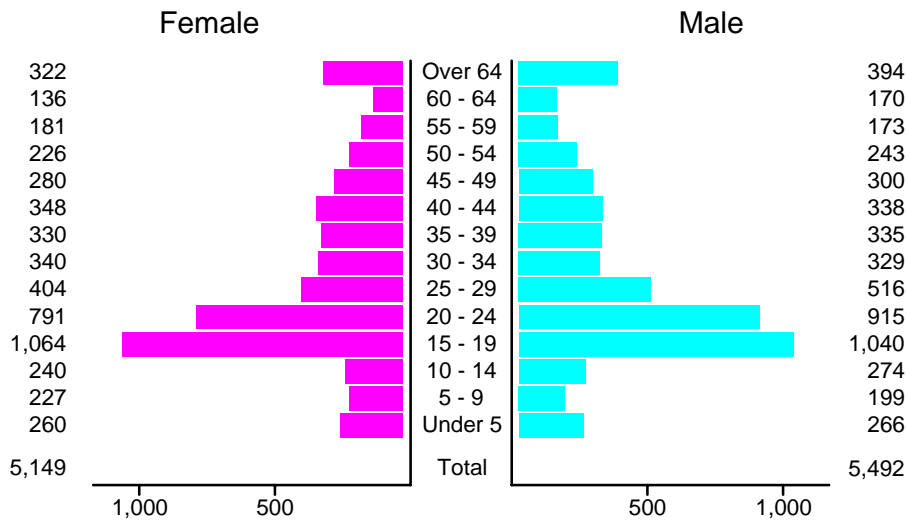
### Crashes in Doña Ana County by Vehicle Type, 2004

Vehicle Type	Vehicles					People	
	Total	% of Total	Fatal	% of Fatal	Injury	Killed	Injured
Passenger car	4,004	51	25	49	1,517	25	1,277
Pickup	1,848	24	6	12	649	2	430
Semi	153	2	2	4	44	1	18
Bus	14	0	0	0	3	0	0
Motorcycle	131	2	1	2	108	1	116
Pedalcyclist	28	0	1	2	26	1	26
Pedestrian	47	1	3	6	40	3	40
Van/4 WD	1,224	16	11	22	452	12	361
Other	27	0	1	2	5	0	7
Unknown	331	4	1	2	49	0	16
<b>Total</b>	<b>7,807</b>	<b>100</b>	<b>51</b>	<b>100</b>	<b>2,893</b>	<b>45</b>	<b>2,291</b>

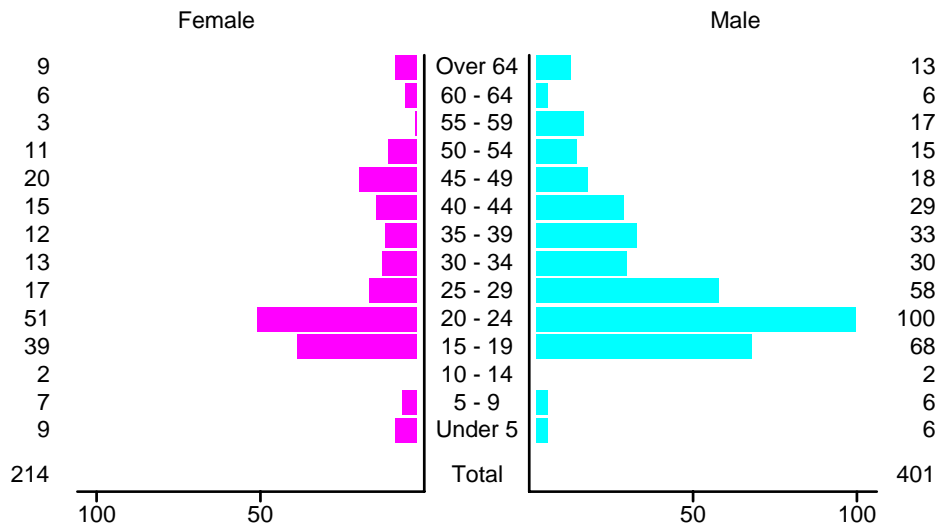
**Crashes in Doña Ana County by Top Contributing Factor, 2004**

Contributing Factor	Crashes					People	
	Total	% of Total	Fatal	% of Fatal	Injury	Killed	Injured
Alcohol involvement	277	7	11	33	150	19	243
Red light running	308	7	0	0	153	0	244
Failing to yield	759	18	2	6	312	2	496
Excessive speed	475	11	7	21	189	9	284
Driving left of center	55	1	1	3	12	1	17
Following too close	488	12	0	0	191	0	263
Improper turning	134	3	0	0	35	0	54
Improper overtaking	69	2	0	0	15	0	23
Improper backing	159	4	0	0	7	0	8
Inop. traffic control	1	0	0	0	1	0	3
Mechanical defect	113	3	2	6	32	2	53
Driver inattention	1,088	26	6	18	355	8	500
Improper driving	3	0	0	0	1	0	1
Other	284	7	4	12	83	4	102
<b>Total</b>	<b>4,213</b>	<b>100</b>	<b>33</b>	<b>100</b>	<b>1,536</b>	<b>45</b>	<b>2,291</b>

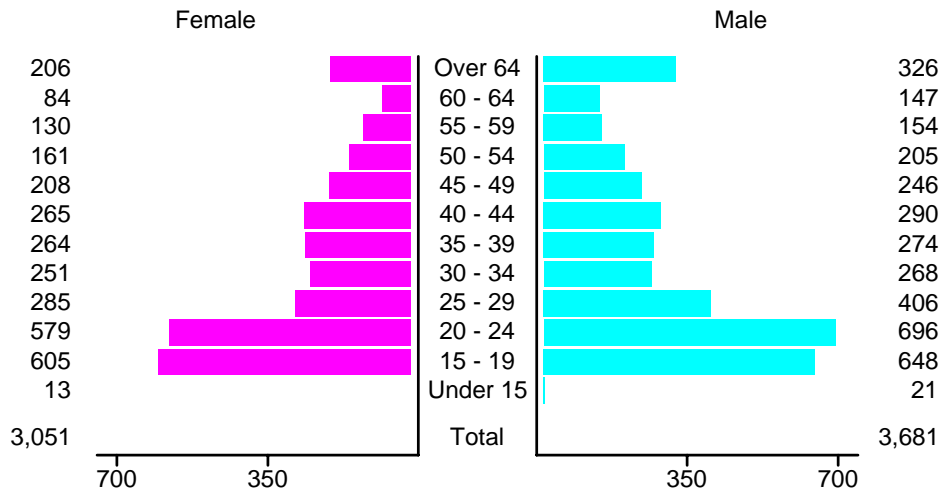
**People in Crashes by Age and Sex in Doña Ana County, 2004**



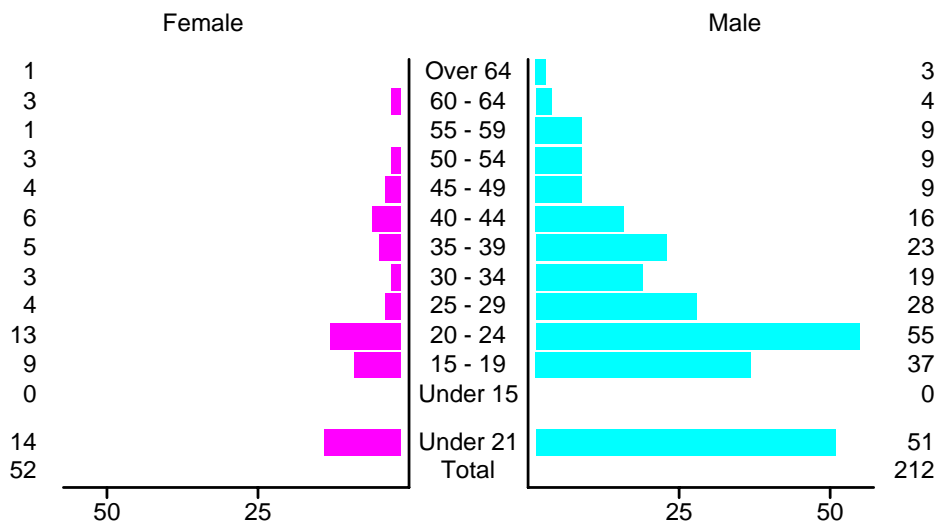
### People in Alcohol-Involved Crashes in Doña Ana County, 2004 by Age and Sex



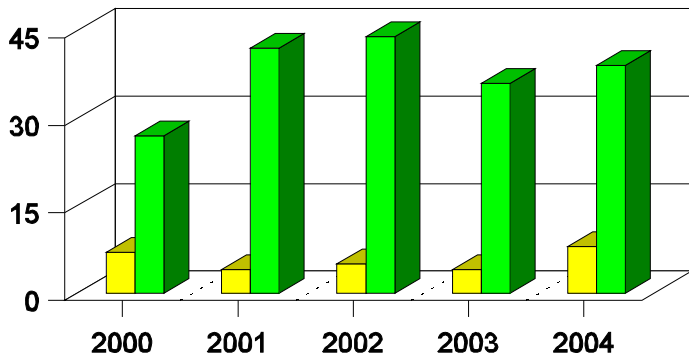
### Drivers in Crashes by Age and Sex in Doña Ana County, 2004



### Alcohol-Involved Drivers in Crashes in Doña Ana County, 2004 by Age and Sex

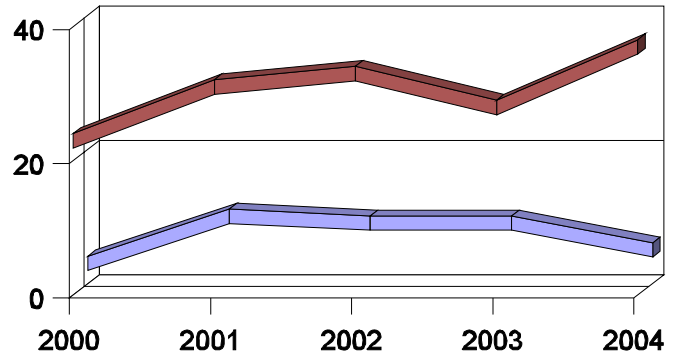


**Pedestrian Crashes in Doña Ana County  
by Pedestrian Alcohol-involvement, 2000-2004**



■ Alcohol-involved Pedestrians  
■ Pedestrians Not Alcohol-involved

**Pedestrian Crashes in Doña Ana County  
by Age Group, 2000-2004**



■ Pedestrians 12 and Younger  
■ Pedestrians 13 and Older

**'Teenagers' and Young Adults in Crashes in Doña Ana County by Vehicle Type, 2004**

Vehicle	'Teenage' Drivers			Young Adult Drivers		
	Total	Fatal	Injury	Total	Fatal	Injury
Passenger car	823	3	309	798	4	296
Pickup	260	0	101	261	1	115
Semi	2	0	1	5	0	2
Motorcycle	25	0	25	27	0	22
Pedalcyclist	4	0	4	5	0	5
Pedestrian	4	0	4	4	1	3
Van/4 WD	142	2	52	177	3	70
Other	0	0	0	2	0	0
Unknown	5	0	1	9	0	5
<b>Total</b>	<b>1,265</b>	<b>5</b>	<b>497</b>	<b>1,288</b>	<b>9</b>	<b>518</b>

**'Teenagers' and Young Adults in Crashes in Doña Ana County, 1995-2004**

Year	'Teenagers'				Young Adults			
	All Crashes		Alcohol Crashes		All Crashes		Alcohol Crashes	
	Killed	Injured	Killed	Injured	Killed	Injured	Killed	Injured
2004	8	410	5	41	9	374	4	60
2003	5	411	2	36	7	364	5	50
2002	6	430	3	59	3	346	3	59
2001	0	428	0	42	2	338	1	47
2000	2	495	0	43	2	400	2	48
1999	4	383	4	54	2	257	1	34
1998	6	443	5	46	1	369	0	64
1997	7	486	4	80	5	367	3	75
1996	2	469	1	71	3	390	3	70
1995	3	459	1	55	4	411	2	88