

Farmington Community Report, 2004

Demographics

In 2004, there were 34,459 licensed drivers in Farmington. Of these, there were 17,492 females and 16,967 males. The population of Farmington was 42,421. The total number of crashes in 2004 was 1,531, yielding a crash rate of 36 per thousand people (total number of crashes 1,531 divided by total population 42,421 times 1,000). The corresponding rate for the state was 27 per thousand people.

General Crash Information

Since 1995 the number of crashes has shown no consistent pattern. Fatal and injury crashes have shown a decreasing trend since 2001. Belt usage (as a percentage) has increased from last year, while belt usage in crashes involving visible and incapacitating injuries has decreased. There were no fatalities in the seven intersections with the most crashes in 2004. Of these intersections, four involve Main Street.

Alcohol-related Crash Information

Information about alcohol-involved crashes is included in all sections of this report. Of the 431 people convicted of DWI in Farmington, 49 percent were first-time DWI convictions (number of first convictions 213 divided by the total number of people convicted 431 times 100). The corresponding percent for the state is 62.

Crash Specifics

Crashes involving other vehicles were the most common class, accounting for 81 percent of all crashes. Crashes involving an other vehicle, a pedestrian, a fixed object and a vehicle on other roadway resulted in fatalities. Passenger cars were the vehicle type most often involved in crashes, accounting for 44 percent of all vehicles in crashes. Pickups accounted for 33 percent of vehicles involved in crashes. Together these two vehicle types comprised 75 percent of the vehicles involved in injury crashes. The three most common top contributing factors were following too close, failing to yield, and driver inattention. There were four fatal crashes in 2004. The most common top contributing factor for the fatal crashes was alcohol involvement.

People in Crashes

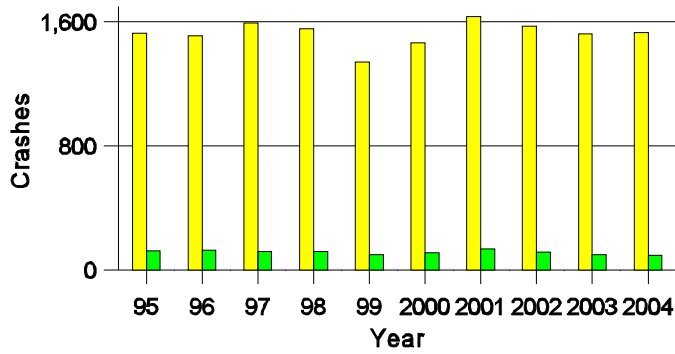
Overall, males were 51 percent of drivers in crashes, although they account for only 49 percent of licensed drivers in Farmington. There were nine pedestrians in crashes; one pedestrian was killed. In 2004, one 'teenager' and no young adults were killed in crashes in Farmington. Statewide 18 percent of alcohol-involved drivers were under 21; in Farmington 15 percent were under 21.

Note: The 1999 crash file contains 15% fewer crashes than the 1998 file. This may be due to problems implementing the new system after the old system failed, or to under reporting. Care should be used in interpreting differences between 1999 and other years in this report.

- Location of arrest/conviction was determined by police agency/court location, not driver residence.
- Crashes and drivers were counted by the city of occurrence/residence.
- Population was counted according to the Census definition.
The city population data is from the most current 2004 estimates.
- Young adults are people between the ages of 20 and 24.
- 'Teenagers' are people between the ages of 15 and 19.
- Tables only include variable values for which there are data.

Crashes in Farmington

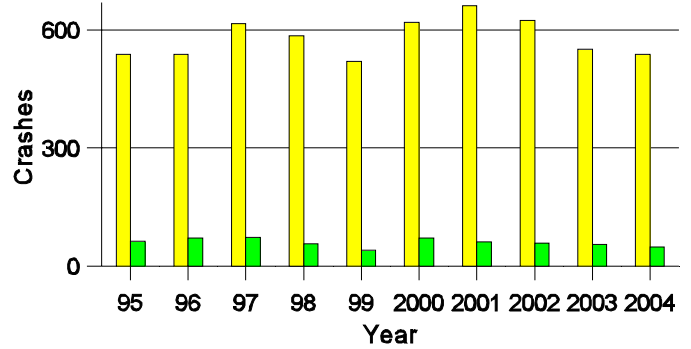
by Alcohol Involvement



■ All Crashes
■ Alcohol-involved Crashes

Fatal and Injury Crashes in Farmington

by Alcohol Involvement



■ All Fatal and Injury Crashes
■ Alcohol-involved Fatal and Injury Crashes

Passenger Vehicle Seatbelt Usage and Injuries in Farmington, 2002-2004

Injury Level	2004		2003		2002	
	Total	No Belt	Total	No Belt	Total	No Belt
Killed	1	0	4	2	1	1
Incapacitating injury	57	3	83	11	60	7
Visible injury	98	16	120	11	128	13
Complaint of injury	593	7	535	13	683	19
Unhurt	3,493	42	3,491	60	3,595	83
Total	4,242	68	4,233	97	4,467	123

The Seven Intersections in Farmington with the Most Crashes, 2004

Intersection	Crashes			People	
	Total	Fatal	Injury	Killed	Injured
20th St @ Butler Ave	25	0	7	0	8
20th St @ Main St	36	0	14	0	24
20th St @ Sullivan Ave	26	0	11	0	15
30th St @ Main St	60	0	23	0	40
Browning Pkwy @ Main St	34	0	9	0	16
Cliffside Dr @ Main St	50	0	20	0	29
Hutton Rd @ Main St	31	0	12	0	16

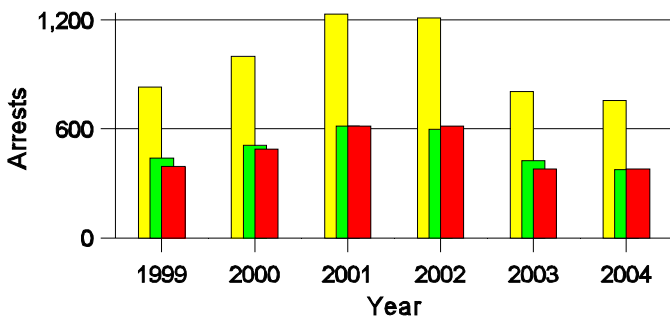
**Lifetime DWI Convictions for Drivers
Convicted of DWI Violations in Farmington, 2004**

Convictions	Since 1999	Since 1980
1st	286	213
2nd	98	101
3rd	35	62
4th	7	20
5th	5	21
6th	0	6
7th	0	5
8th	0	1
9th	0	1
10 or more	0	1
Total	431	431

Convictions are counts of people convicted of DWI by 7/2005 for violations in 2004 in Farmington.
Convictions are not comparable to arrests.

DWI Arrests in Farmington

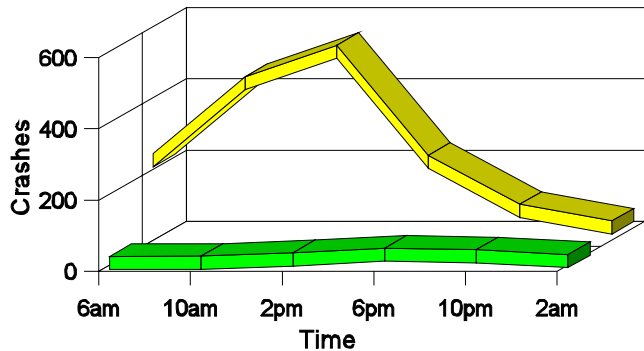
Showing First Arrests and Repeat Offenders



- Total DWI Arrests
- First DWI Arrests
- Repeat DWI Arrests

Crashes in Farmington

by Hour and Alcohol Involvement



- All Crashes
- Alcohol-involved Crashes

Crashes in Farmington by Class, 2004

Class	Crashes				People		
	Total	% of Total	Fatal	% of Fatal	Injury	Killed	Injured
Other vehicle	1,243	81	1	25	456	2	737
Pedestrian	9	1	1	25	7	1	8
Fixed object	132	9	1	25	32	1	43
Veh. on other roadway	1	0	1	25	0	1	1
Parked vehicle	80	5	0	0	10	0	13
Overturn	19	1	0	0	10	0	12
Other non-collision	7	0	0	0	2	0	3
Pedalcyclist	17	1	0	0	17	0	17
Animal	17	1	0	0	0	0	0
Other object	6	0	0	0	0	0	0
Total	1,531	100	4	100	534	5	834

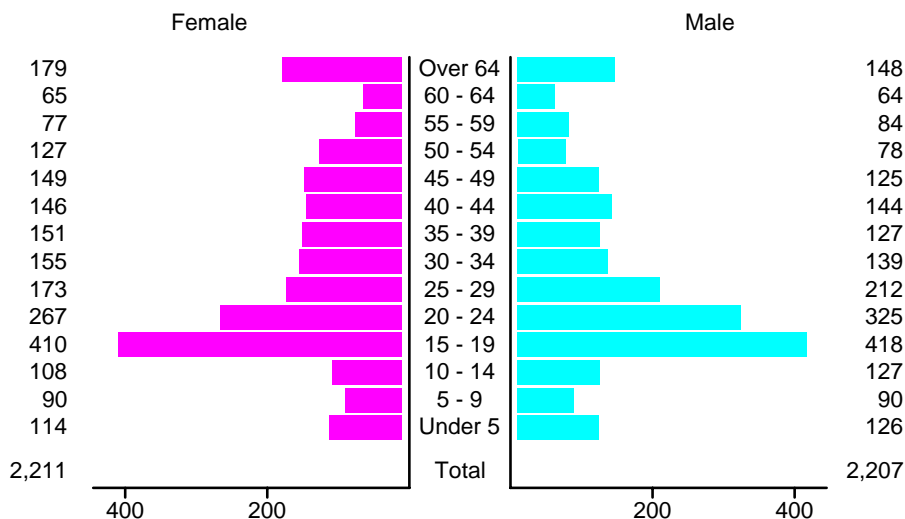
Crashes in Farmington by Vehicle Type, 2004

Vehicle Type	Vehicles					People	
	Total	% of Total	Fatal	% of Fatal	Injury	Killed	Injured
Passenger car	1,346	44	3	43	511	3	430
Pickup	993	33	1	14	342	0	208
Semi	45	1	0	0	9	0	2
Bus	3	0	0	0	0	0	0
Motorcycle	25	1	2	29	22	1	23
Pedalcyclist	18	1	0	0	18	0	18
Pedestrian	9	0	1	14	7	1	7
Van/4 WD	525	17	0	0	202	0	141
Other	8	0	0	0	2	0	0
Unknown	55	2	0	0	19	0	5
Total	3,027	100	7	100	1,132	5	834

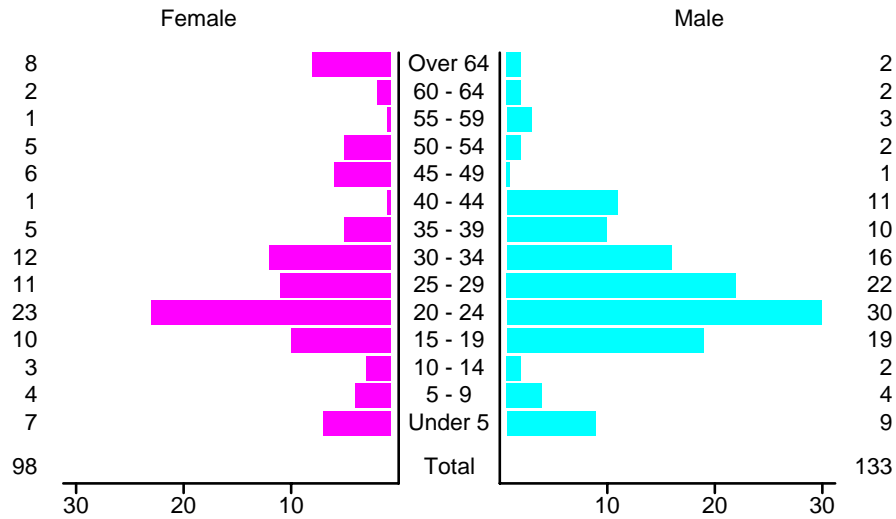
Crashes in Farmington by Top Contributing Factor, 2004

Contributing Factor	Crashes					People	
	Total	% of Total	Fatal	% of Fatal	Injury	Killed	Injured
Alcohol involvement	94	6	3	75	45	4	78
Red light running	120	8	0	0	56	0	108
Failing to yield	330	22	0	0	124	0	193
Excessive speed	81	5	1	25	22	1	34
Driving left of center	18	1	0	0	2	0	2
Following too close	445	29	0	0	178	0	259
Improper turning	46	3	0	0	4	0	6
Improper overtaking	17	1	0	0	2	0	2
Improper backing	64	4	0	0	1	0	1
Mechanical defect	15	1	0	0	2	0	3
Driver inattention	212	14	0	0	83	0	129
Improper driving	1	0	0	0	0	0	0
Other	88	6	0	0	15	0	19
Total	1,531	100	4	100	534	5	834

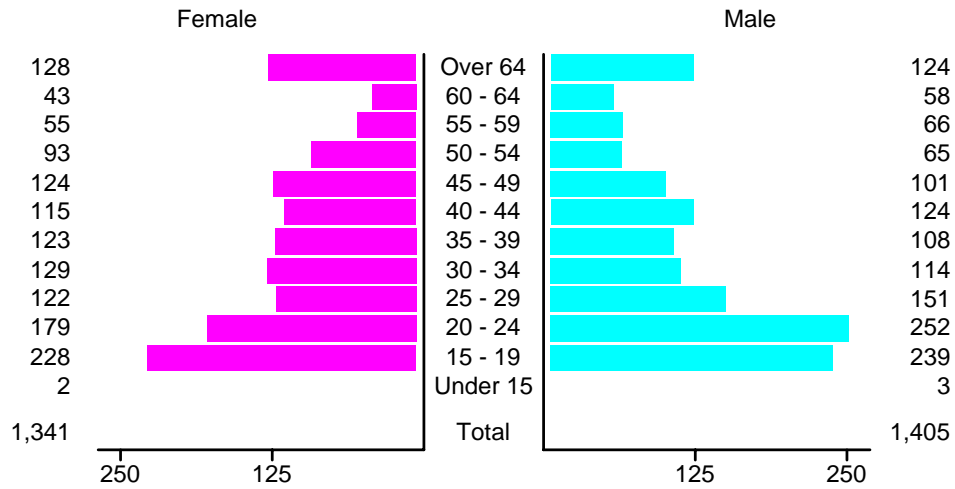
People in Crashes by Age and Sex in Farmington, 2004



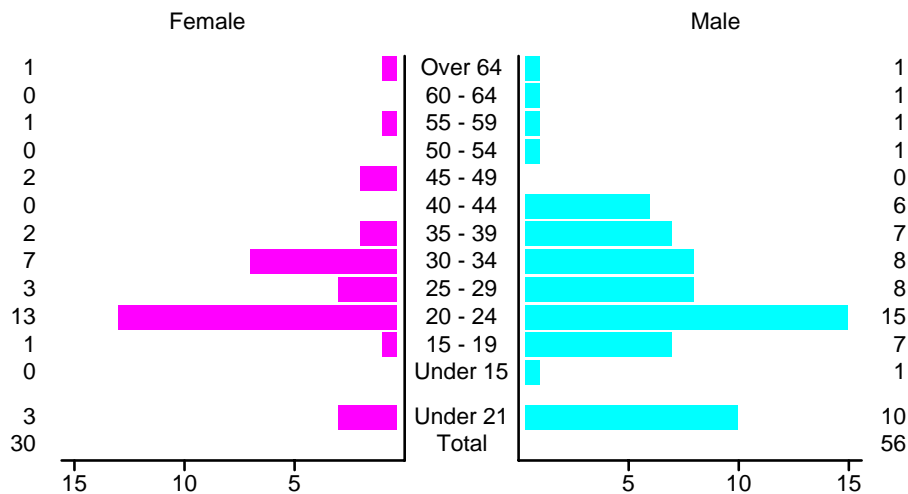
People in Alcohol-Involved Crashes in Farmington, 2004 by Age and Sex



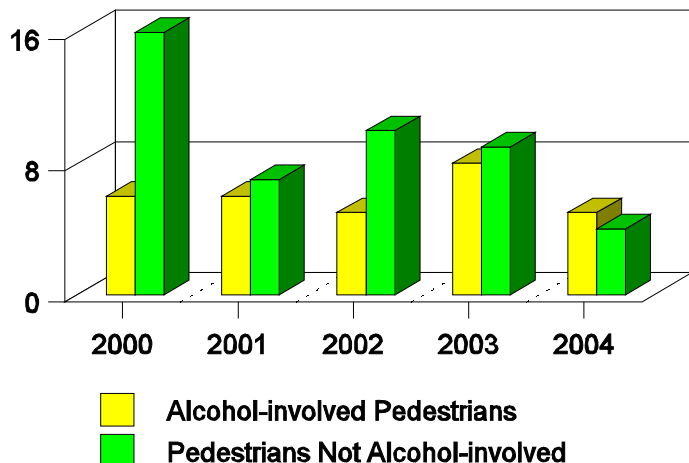
Drivers in Crashes by Age and Sex in Farmington, 2004



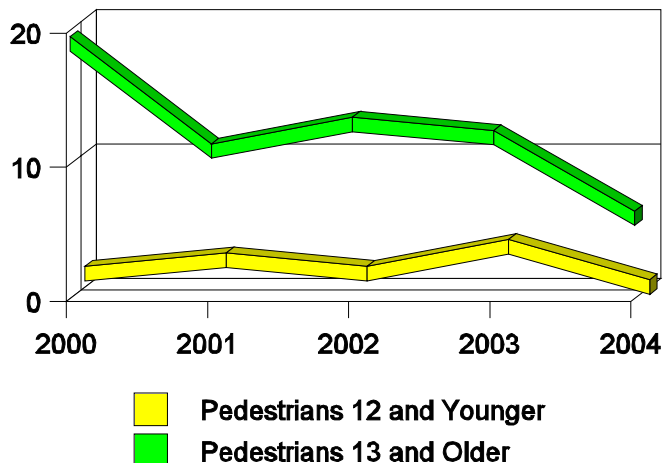
Alcohol-Involved Drivers in Crashes in Farmington, 2004 by Age and Sex



**Pedestrian in Crashes in Farmington
by Pedestrian Alcohol-involvement, 2000-2004**



**Pedestrian in Crashes in Farmington
by Age Group, 2000-2004**



'Teenagers' and Young Adults in Crashes in Farmington by Vehicle Type, 2004

Vehicle	'Teenage' Drivers			Young Adult Drivers		
	Total	Fatal	Injury	Total	Fatal	Injury
Passenger car	265	1	93	236	0	91
Pickup	123	0	37	126	0	42
Semi	1	0	1	2	0	0
Motorcycle	4	0	4	5	0	5
Pedalcyclist	5	0	5	1	0	1
Van/4 WD	71	0	24	61	0	29
Unknown	4	0	3	2	0	0
Total	473	1	167	433	0	168

'Teenagers' and Young Adults Killed and Injured in Crashes by Year in Farmington, 1995-2004

Year	'Teenagers'				Young Adults			
	All Crashes		Alcohol Crashes		All Crashes		Alcohol Crashes	
	Killed	Injured	Killed	Injured	Killed	Injured	Killed	Injured
2004	1	130	0	11	0	119	0	12
2003	2	146	0	8	1	107	0	16
2002	0	183	0	21	0	131	0	22
2001	0	215	0	23	0	155	0	26
2000	0	219	0	26	0	121	0	35
1999	0	188	0	14	0	89	0	12
1998	0	221	0	17	0	97	0	16
1997	0	204	0	15	0	125	0	22
1996	0	183	0	11	0	98	0	15
1995	0	149	0	9	1	96	1	19