

Gallup Community Report, 2004

Demographics

In 2004, there were 14,801 licensed drivers in Gallup. Of these, there were 7,654 females and 7,147 males. The population of Gallup was 19,715. The total number of crashes in 2004 was 915, yielding a crash rate of 46 per thousand people (total number of crashes 915 divided by total population 19,715 times 1,000). The corresponding rate for the state was 27 per thousand people.

General Crash Information

Since 1995 the number of crashes has shown no consistent pattern. Fatal and injury crashes have shown no consistent pattern since 1995. Belt usage (as a percentage) has increased from last year, while belt usage in crashes involving visible and incapacitating injuries has also increased. There were two fatalities in the seven intersections with the most crashes in 2004. Of these intersections, five involve Muñoz Drive.

Alcohol-related Crash Information

Information about alcohol-involved crashes is included in all sections of this report. Of the 443 people convicted of DWI in Gallup, 51 percent were first-time DWI convictions (number of first convictions 227 divided by the total number of people convicted 443 times 100). The corresponding percent for the state is 62.

Crash Specifics

Crashes involving other vehicles were the most common class, accounting for 77 percent of all crashes. Crashes involving other vehicles and pedestrians were the most common crash classes which resulted in fatalities. Passenger cars were the vehicle type most often involved in crashes, accounting for 45 percent of all vehicles in crashes. Pickups accounted for 32 percent of vehicles involved in crashes. Together these two vehicle types comprised 76 percent of the vehicles involved in injury crashes. The three most common top contributing factors were failing to yield, following too close, and driver inattention. There were 12 fatal crashes in 2004. The most common top contributing factor for the fatal crashes was alcohol involvement.

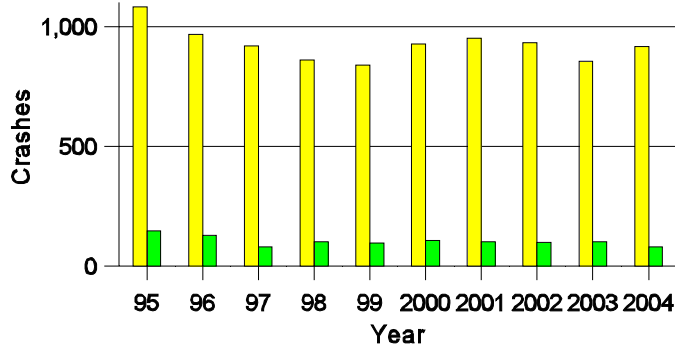
People in Crashes

Overall, males were 54 percent of drivers in crashes, although they account for only 48 percent of licensed drivers in Gallup. There were 22 pedestrians in crashes; six pedestrians were killed in crashes. In 2004, no 'teenagers' and no young adults were killed in crashes in Gallup. Statewide 18 percent of alcohol-involved drivers were under 21; in Gallup 17 percent were under 21.

Note: The 1999 crash file contains 15% fewer crashes than the 1998 file. This may be due to problems implementing the new system after the old system failed, or to under reporting. Care should be used in interpreting differences between 1999 and other years in this report.

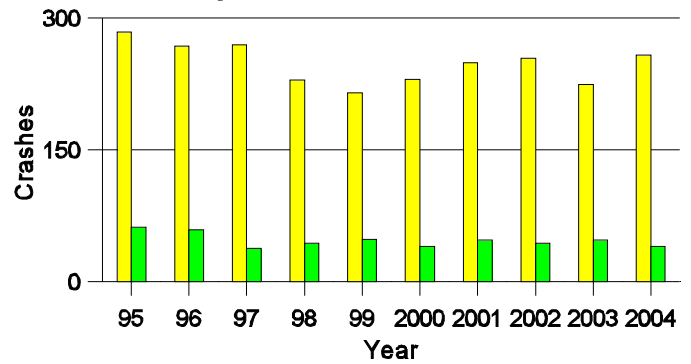
- Location of arrest/conviction was determined by police agency/court location, not driver residence.
- Crashes and drivers were counted by the city of occurrence/residence.
- Population was counted according to the Census definition. The city population data is from the most current 2004 estimates.
- Young adults are people between the ages of 20 and 24.
- 'Teenagers' are people between the ages of 15 and 19.
- Tables only include variable values for which there are data.

Crashes in Gallup by Alcohol Involvement



■ All Crashes
■ Alcohol-involved Crashes

Fatal and Injury Crashes in Gallup by Alcohol Involvement



■ All Fatal and Injury Crashes
■ Alcohol-involved Fatal and Injury Crashes

Passenger Vehicle Seatbelt Usage and Injuries in Gallup, 2002-2004

Injury Level	2004		2003		2002	
	Total	No Belt	Total	No Belt	Total	No Belt
Killed	6	2	4	1	0	0
Incapacitating injury	42	2	32	4	44	4
Visible injury	53	5	37	5	45	8
Complaint of injury	236	3	202	8	244	3
Unhurt	2,123	24	1,950	34	2,194	49
Total	2,460	36	2,225	52	2,527	64

The Seven Intersections in Gallup with the Most Crashes, 2004

Intersection	Crashes			People	
	Total	Fatal	Injury	Killed	Injured
2nd St @ Nizhoni Blvd	22	0	4	0	8
2nd St @ US 66	15	1	2	1	2
Aztec Ave @ Munoz Dr	24	0	12	0	21
Jefferson Ave @ Munoz Dr	16	1	3	1	4
Lincoln Ave @ Munoz Dr	26	0	6	0	8
Maloney Ave @ Munoz Dr	38	0	10	0	13
Metro Ave @ Munoz Dr	16	0	3	0	6

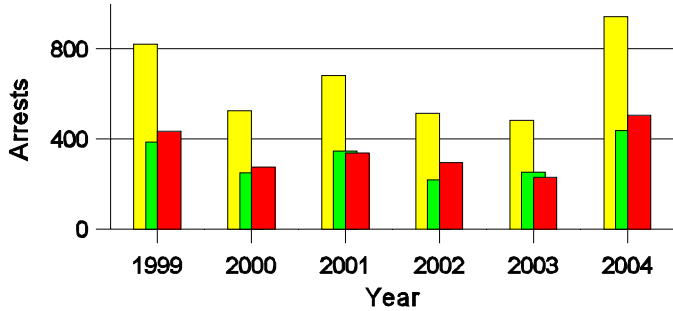
**Lifetime DWI Convictions for Drivers
Convicted of DWI Violations in Gallup, 2004**

Convictions	Since 1999	Since 1980
1st	314	227
2nd	97	102
3rd	22	45
4th	7	23
5th	3	25
6th	0	7
7th	0	6
8th	0	2
9th	0	5
10 or more	0	1
Total	443	443

Convictions are counts of people convicted of DWI by 7/2005 for violations in 2004 in Gallup. Convictions are not comparable to arrests.

DWI Arrests in Gallup

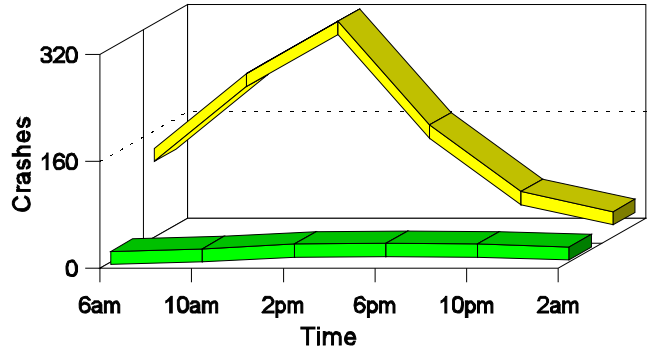
Showing First Arrests and Repeat Offenders



■ Total DWI Arrests
■ First DWI Arrests
■ Repeat DWI Arrests

Crashes in Gallup

by Hour and Alcohol Involvement



■ All Crashes
■ Alcohol-involved Crashes

Crashes in Gallup by Class, 2004

Class	Crashes				People		
	Total	% of Total	Fatal	% of Fatal	Injury	Killed	Injured
Other vehicle	700	77	4	33	200	4	325
Pedestrian	17	2	5	42	10	5	10
Fixed object	91	10	1	8	16	1	23
Veh. on other roadway	1	0	0	0	0	0	0
Parked vehicle	68	7	0	0	4	0	4
Overturn	14	2	1	8	8	3	13
Other non-collision	13	1	0	0	6	0	6
Pedalcyclist	3	0	0	0	2	0	2
Railroad train	1	0	1	8	0	1	0
Other object	7	1	0	0	0	0	0
Total	915	100	12	100	246	14	383

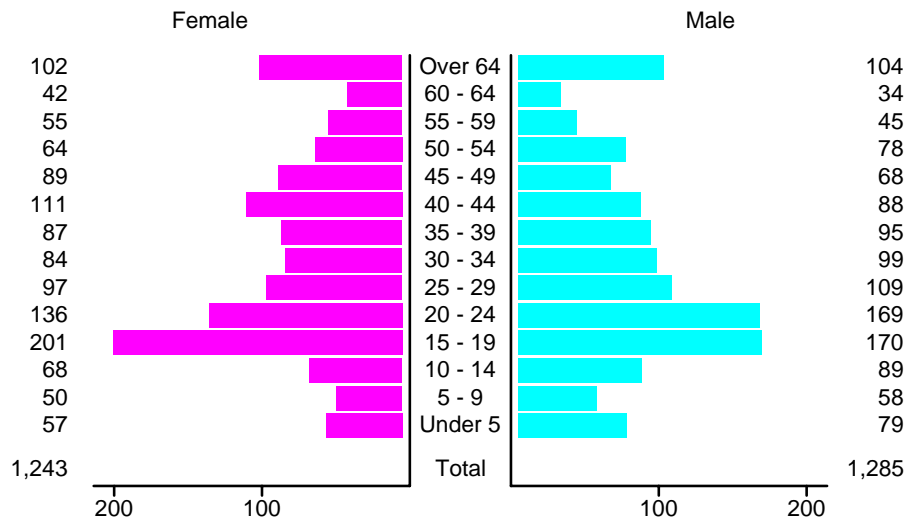
Crashes in Gallup by Vehicle Type, 2004

Vehicle Type	Vehicles					People	
	Total	% of Total	Fatal	% of Fatal	Injury	Killed	Injured
Passenger car	790	45	6	26	211	3	171
Pickup	562	32	5	22	156	0	119
Semi	40	2	0	0	7	0	4
Bus	6	0	0	0	3	0	10
Motorcycle	9	1	2	9	4	2	5
Pedalcyclist	4	0	0	0	3	0	3
Pedestrian	22	1	6	26	14	6	14
Van/4 WD	253	14	2	9	77	3	55
Other	2	0	0	0	1	0	0
Unknown	73	4	2	9	10	0	2
Total	1,761	100	23	100	486	14	383

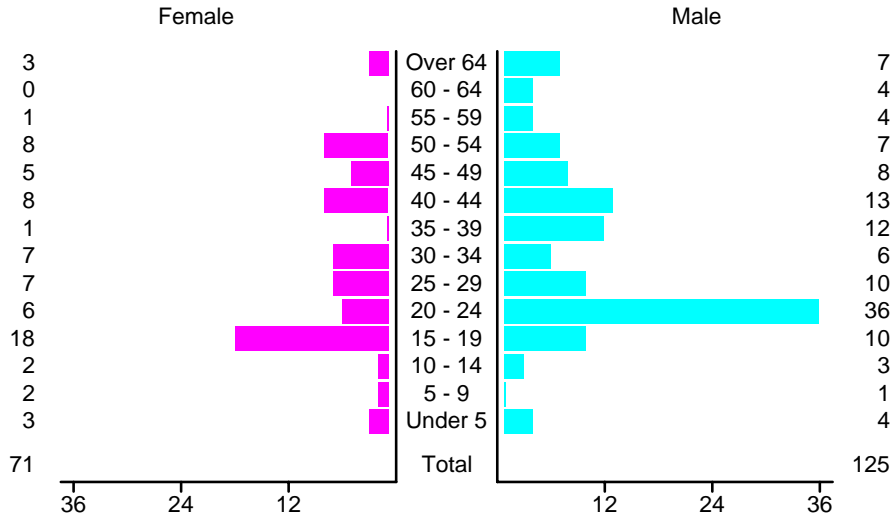
Crashes in Gallup by Top Contributing Factor, 2004

Contributing Factor	Crashes					People	
	Total	% of Total	Fatal	% of Fatal	Injury	Killed	Injured
Alcohol involvement	81	9	7	58	33	7	45
Red light running	67	7	2	17	21	2	39
Failing to yield	187	20	0	0	65	0	103
Excessive speed	90	10	1	8	27	1	47
Driving left of center	9	1	0	0	3	0	7
Following too close	186	20	0	0	55	0	79
Improper turning	54	6	0	0	8	0	10
Improper overtaking	9	1	0	0	0	0	0
Improper backing	59	6	0	0	2	0	2
Inop. traffic control	1	0	0	0	0	0	0
Mechanical defect	13	1	0	0	0	0	0
Driver inattention	118	13	0	0	25	0	40
Improper driving	1	0	0	0	1	0	1
Other	40	4	2	17	6	4	10
Total	915	100	12	100	246	14	383

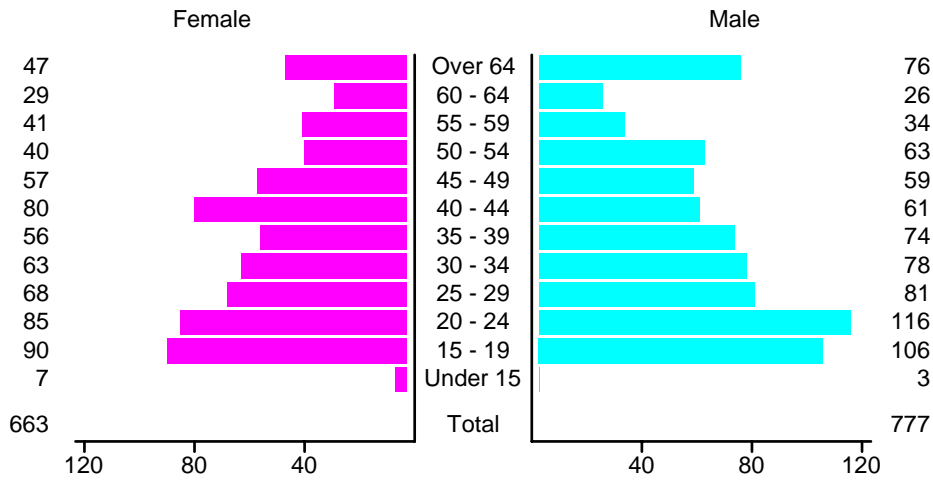
People in Crashes by Age and Sex in Gallup, 2004



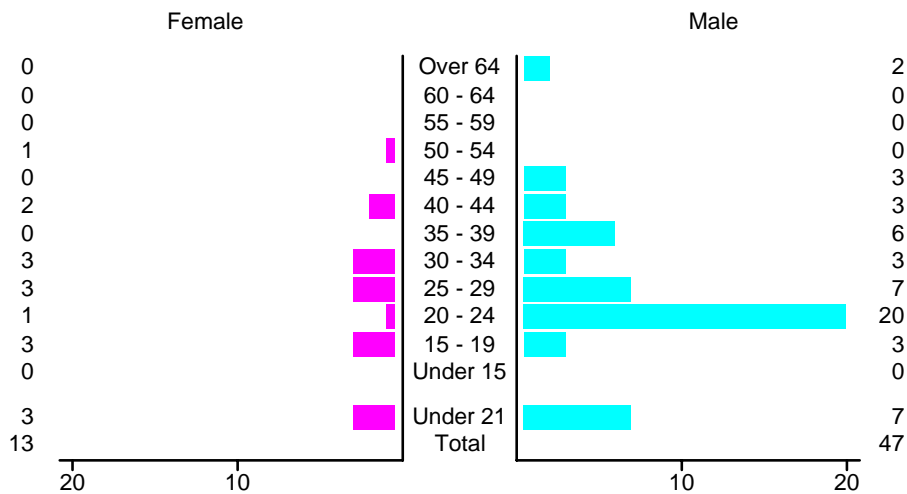
People in Alcohol-Involved Crashes in Gallup, 2004 by Age and Sex



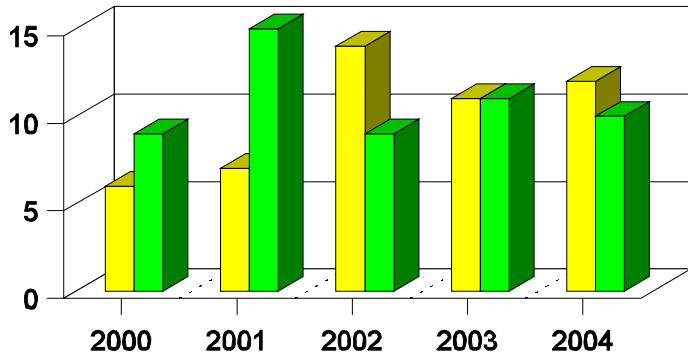
Drivers in Crashes by Age and Sex in Gallup, 2004



Alcohol-Involved Drivers in Crashes in Gallup, 2004 by Age and Sex

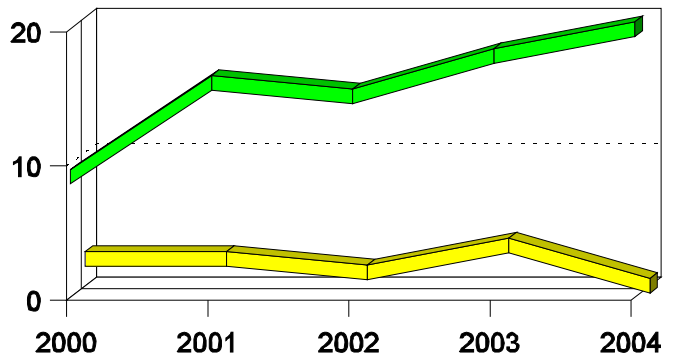


**Pedestrian in Crashes in Gallup
by Pedestrian Alcohol-involvement, 2000-2004**



■ Alcohol-involved Pedestrians
■ Pedestrians Not Alcohol-involved

**Pedestrian in Crashes in Gallup
by Age Group, 2000-2004**



■ Pedestrians 12 and Younger
■ Pedestrians 13 and Older

'Teenagers' and Young Adults in Crashes in Gallup by Vehicle Type, 2004

Vehicle	'Teenage' Drivers			Young Adult Drivers		
	Total	Fatal	Injury	Total	Fatal	Injury
Passenger car	119	0	33	117	1	31
Pickup	46	0	16	54	2	16
Semi	0	0	0	1	0	0
Motorcycle	3	0	2	1	0	1
Pedestrian	1	0	1	4	0	4
Van/4 WD	28	0	11	27	0	11
Unknown	2	0	1	2	0	0
Total	199	0	64	206	3	63

'Teenagers' and Young Adults Killed and Injured in Crashes by Year in Gallup, 1995-2004

Year	'Teenagers'				Young Adults			
	All Crashes		Alcohol Crashes		All Crashes		Alcohol Crashes	
	Killed	Injured	Killed	Injured	Killed	Injured	Killed	Injured
2004	0	53	0	9	0	33	0	9
2003	1	46	0	6	0	39	0	9
2002	0	46	0	4	0	50	0	13
2001	0	64	0	8	0	44	0	5
2000	1	61	0	5	1	53	1	8
1999	0	63	0	7	0	34	0	7
1998	0	53	0	9	0	47	0	9
1997	0	75	0	7	0	40	0	10
1996	0	64	0	16	0	49	0	14
1995	1	86	0	14	0	54	0	10