

Las Vegas Community Report, 2004

Demographics

In 2004, there were 12,297 licensed drivers in Las Vegas. Of these, there were 6,473 females and 5,824 males. The population of Las Vegas was 14,031. The total number of crashes in 2004 was 493, yielding a crash rate of 35 per thousand people (total number of crashes 493 divided by total population 14,031 times 1,000). The corresponding rate for the state was 27 per thousand people.

General Crash Information

Since 1995 the number of crashes has shown no consistent pattern. Fatal and injury crashes have shown an increasing trend since 2001. Belt usage (as a percentage) has increased from last year, while belt usage in crashes involving visible and incapacitating injuries has remained about the same as last year. There were no fatalities in the seven intersections with the most crashes in 2004. Of these intersections, both 7th Street and Mills Avenue were involved three times.

Alcohol-related Crash Information

Information about alcohol-involved crashes is included in all sections of this report. Of the 53 people convicted of DWI in Las Vegas, 55 percent were first-time DWI convictions (number of first convictions 29 divided by the total number of people convicted 53 times 100). The corresponding percent for the state is 62.

Crash Specifics

Crashes involving other vehicles were the most common class, accounting for 72 percent of all crashes. A crash involving a fixed object resulted in fatalities. Passenger cars were the vehicle type most often involved in crashes, accounting for 53 percent of all vehicles in crashes. Pickups accounted for 24 percent of vehicles involved in crashes. Together these two vehicle types comprised 73 percent of the vehicles involved in injury crashes. The three most common top contributing factors were driver inattention, following too close, and failing to yield. There was one fatal crash in 2004. The top contributing factor for the fatal crash was alcohol involvement.

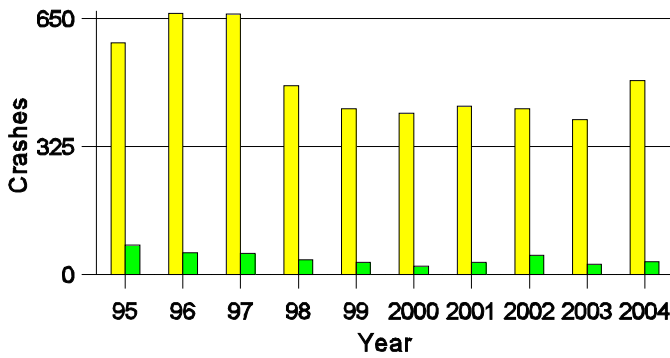
People in Crashes

Overall, males were 52 percent of drivers in crashes, although they account for only 47 percent of licensed drivers in Las Vegas. There were six pedestrians in crashes. In 2004, one 'teenager' and no young adults were killed in crashes in Las Vegas. Statewide 18 percent of alcohol-involved drivers were under 21; in Las Vegas 14 percent were under 21.

Note: The 1999 crash file contains 15% fewer crashes than the 1998 file. This may be due to problems implementing the new system after the old system failed, or to under reporting. Care should be used in interpreting differences between 1999 and other years in this report.

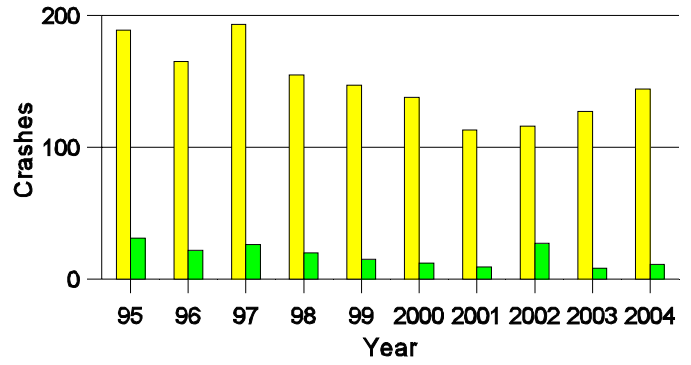
- Location of arrest/conviction was determined by police agency/court location, not driver residence.
- Crashes and drivers were counted by the city of occurrence/residence.
- Population was counted according to the Census definition.
The city population data is from the most current 2004 estimates.
- Young adults are people between the ages of 20 and 24.
- 'Teenagers' are people between the ages of 15 and 19.
- Tables only include variable values for which there are data.

Crashes in Las Vegas by Alcohol Involvement



■ All Crashes
■ Alcohol-involved Crashes

Fatal and Injury Crashes in Las Vegas by Alcohol Involvement



■ All Fatal and Injury Crashes
■ Alcohol-involved Fatal and Injury Crashes

Passenger Vehicle Seatbelt Usage and Injuries in Las Vegas, 2002-2004

Injury Level	2004		2003		2002	
	Total	No Belt	Total	No Belt	Total	No Belt
Killed	0	0	2	2	0	0
Incapacitating injury	5	1	11	1	13	2
Visible injury	27	6	26	5	25	8
Complaint of injury	165	2	136	2	102	1
Unhurt	933	2	753	9	843	16
Total	1,130	11	928	19	983	27

The Seven Intersections in Las Vegas with the Most Crashes, 2004

Intersection	Crashes			People	
	Total	Fatal	Injury	Killed	Injured
7th St @ Legion Dr	6	0	3	0	3
7th St @ Mills Ave	18	0	6	0	8
7th St @ Mountain View Dr	13	0	6	0	9
8th St @ Mills Ave	11	0	5	0	8
8th St @ National St	6	0	3	0	6
9th St @ Mills Ave	6	0	3	0	5
Grand Ave @ University Ave	6	0	3	0	3

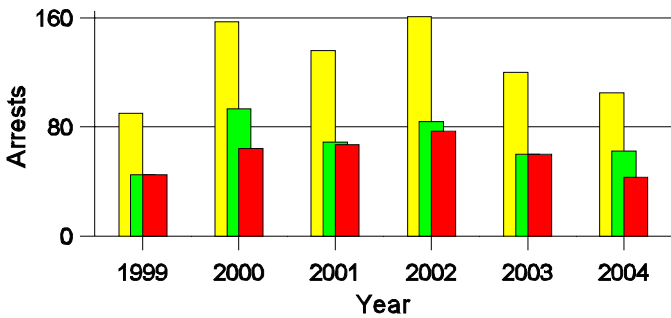
**Lifetime DWI Convictions for Drivers
Convicted of DWI Violations in Las Vegas, 2004**

Convictions	Since 1999	Since 1980
1st	40	29
2nd	9	9
3rd	3	5
4th	1	6
5th	0	3
6th	0	0
7th	0	0
8th	0	0
9th	0	0
10 or more	0	1
Total	53	53

Convictions are counts of people convicted of DWI by 7/2005 for violations in 2004 in Las Vegas.
Convictions are not comparable to arrests.

DWI Arrests in Las Vegas

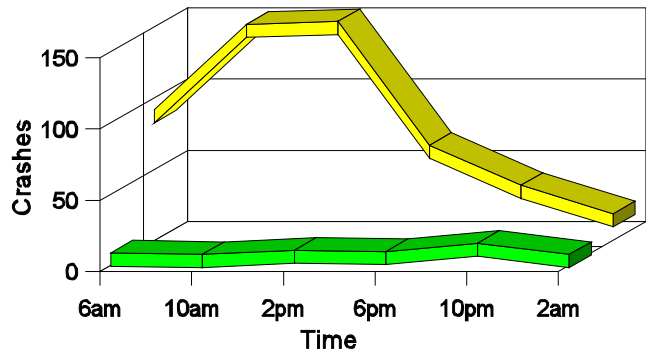
Showing First Arrests and Repeat Offenders



■ Total DWI Arrests
■ First DWI Arrests
■ Repeat DWI Arrests

Crashes in Las Vegas

by Hour and Alcohol Involvement



■ All Crashes
■ Alcohol-involved Crashes

Crashes in Las Vegas by Class, 2004

Class	Crashes				People		
	Total	% of Total	Fatal	% of Fatal	Injury	Killed	Injured
Other vehicle	355	72	0	0	114	0	181
Pedestrian	6	1	0	0	4	0	4
Fixed object	53	11	1	100	17	1	21
Parked vehicle	68	14	0	0	3	0	3
Overturn	6	1	0	0	3	0	3
Pedalcyclist	1	0	0	0	1	0	1
Animal	1	0	0	0	0	0	0
Other object	3	1	0	0	1	0	1
Total	493	100	1	100	143	1	214

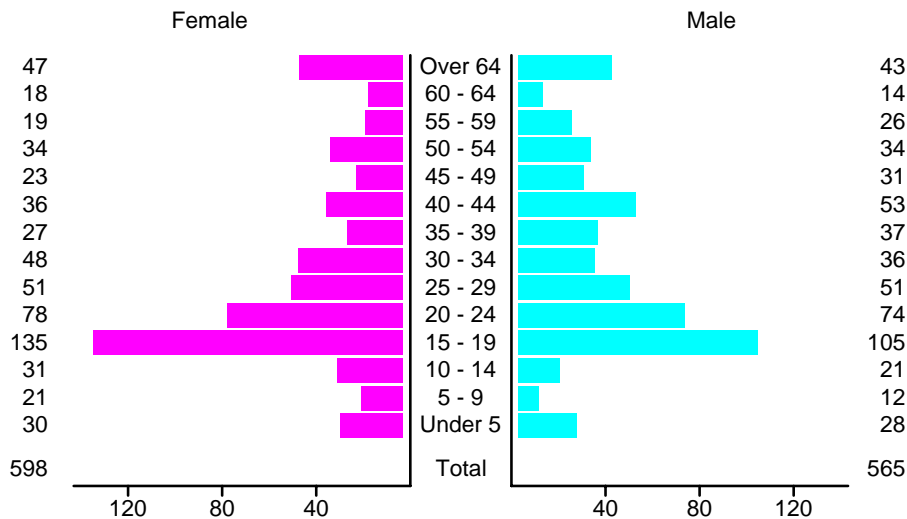
Crashes in Las Vegas by Vehicle Type, 2004

Vehicle Type	Vehicles				People		
	Total	% of Total	Fatal	% of Fatal	Injury	Killed	Injured
Passenger car	501	53	0	0	150	0	128
Pickup	224	24	0	0	55	0	35
Semi	7	1	0	0	1	0	0
Bus	2	0	0	0	2	0	0
Motorcycle	5	1	0	0	4	0	4
Pedalcyclist	1	0	0	0	1	0	1
Pedestrian	6	1	0	0	4	0	4
Van/4 WD	149	16	1	100	49	1	37
Other	5	1	0	0	3	0	0
Unknown	50	5	0	0	10	0	5
Total	950	100	1	100	279	1	214

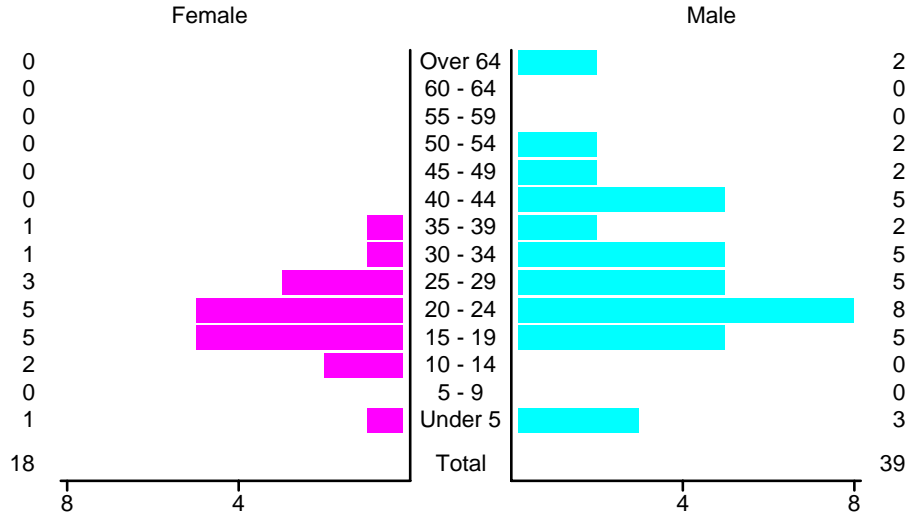
Crashes in Las Vegas by Top Contributing Factor, 2004

Contributing Factor	Crashes				People		
	Total	% of Total	Fatal	% of Fatal	Injury	Killed	Injured
Alcohol involvement	32	6	1	100	10	1	15
Red light running	37	8	0	0	15	0	31
Failing to yield	78	16	0	0	26	0	54
Excessive speed	45	9	0	0	12	0	15
Driving left of center	7	1	0	0	4	0	4
Following too close	79	16	0	0	29	0	36
Improper turning	10	2	0	0	2	0	2
Improper overtaking	7	1	0	0	2	0	2
Improper backing	46	9	0	0	3	0	3
Mechanical defect	7	1	0	0	2	0	2
Driver inattention	117	24	0	0	30	0	41
Other	28	6	0	0	8	0	9
Total	493	100	1	100	143	1	214

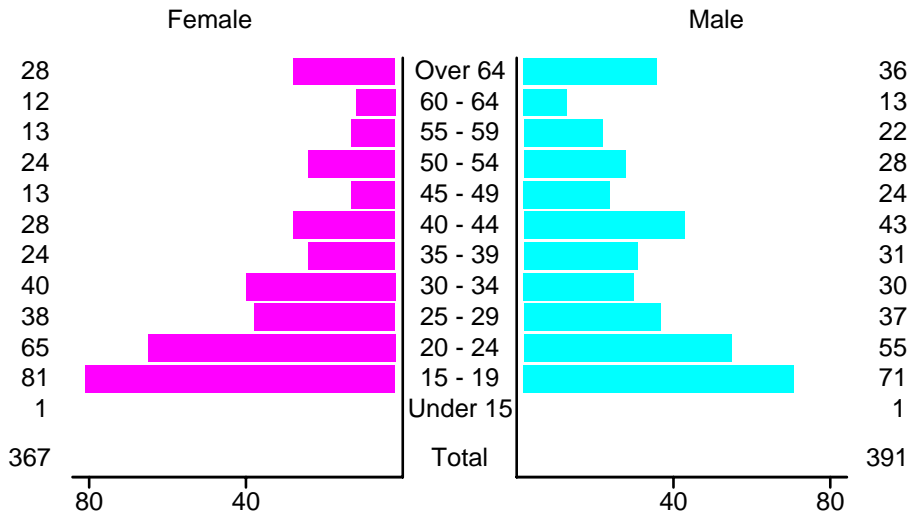
People in Crashes by Age and Sex in Las Vegas, 2004



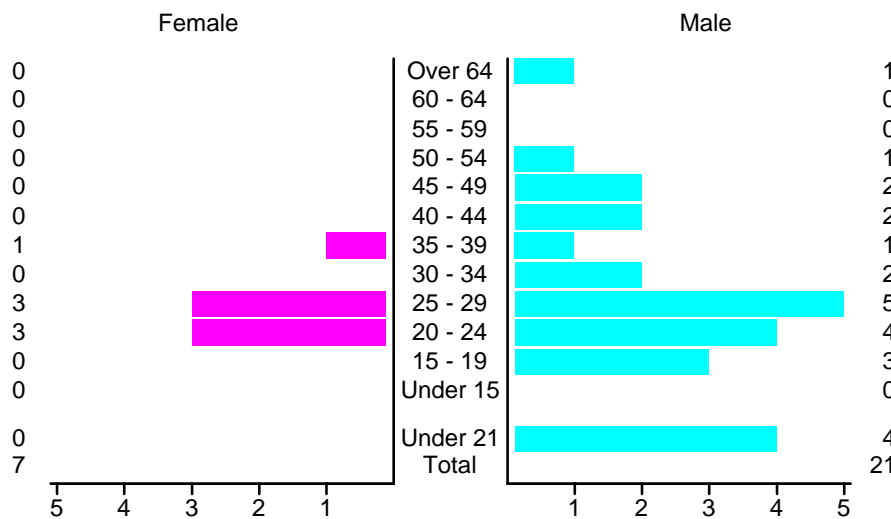
People in Alcohol-Involved Crashes in Las Vegas, 2004 by Age and Sex



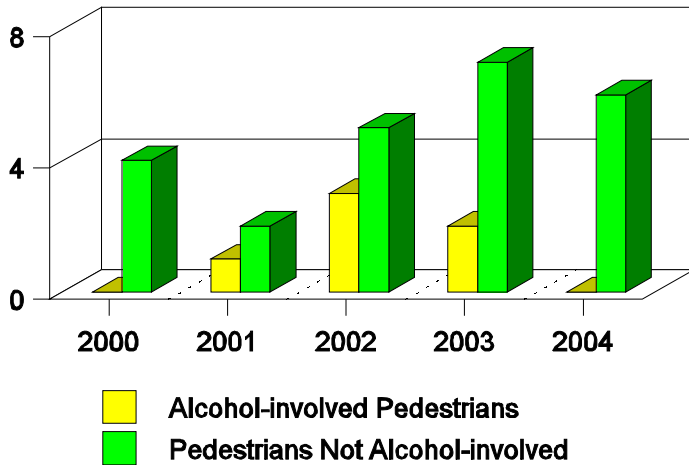
Drivers in Crashes by Age and Sex in Las Vegas, 2004



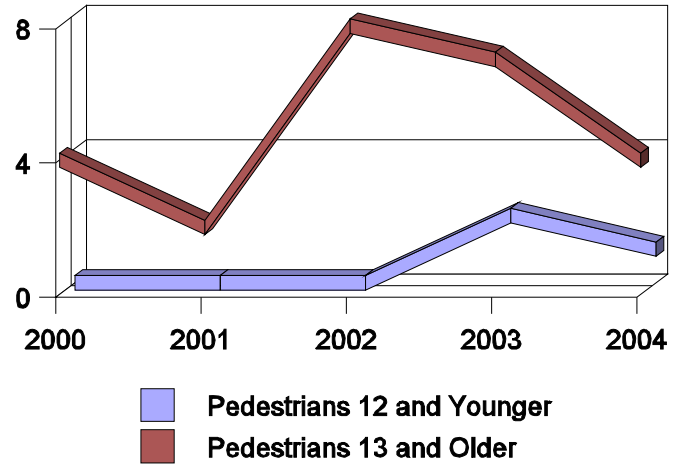
Alcohol-Involved Drivers in Crashes in Las Vegas, 2004 by Age and Sex



**Pedestrian in Crashes in Las Vegas
by Pedestrian Alcohol-involvement, 2000-2004**



**Pedestrian in Crashes in Las Vegas
by Age Group, 2000-2004**



'Teenagers' and Young Adults in Crashes in Las Vegas by Vehicle Type, 2004

Vehicle	'Teenage' Drivers			Young Adult Drivers		
	Total	Fatal	Injury	Total	Fatal	Injury
Passenger car	104	0	36	80	0	24
Pickup	28	0	9	25	0	7
Motorcycle	2	0	2	1	0	1
Van/4 WD	17	1	9	15	0	8
Unknown	1	0	0	2	0	1
Total	152	1	56	123	0	41

'Teenagers' and Young Adults Killed and Injured in Crashes by Year in Las Vegas, 1995-2004

Year	'Teenagers'				Young Adults			
	All Crashes		Alcohol Crashes		All Crashes		Alcohol Crashes	
	Killed	Injured	Killed	Injured	Killed	Injured	Killed	Injured
2004	1	45	1	3	0	29	0	5
2003	0	35	0	0	0	23	0	5
2002	0	31	0	5	0	21	0	3
2001	0	37	0	3	0	19	0	2
2000	0	56	0	5	0	14	0	1
1999	0	54	0	2	0	20	0	4
1998	0	42	0	4	2	32	2	8
1997	0	51	0	8	0	50	0	10
1996	0	52	0	4	0	39	0	15
1995	0	45	0	5	0	44	0	8