

# Rio Arriba County Report, 2004

## Demographics

In 2004, there were 29,692 licensed drivers in Rio Arriba County. Of these, there were 15,002 females and 14,690 males. The population in Rio Arriba County was 40,710. The total number of crashes in 2004 was 698, yielding a crash rate of 17 per thousand people (the total number of crashes 698 divided by the population 40,710 multiplied by 1,000). The corresponding rate for the state was 27 per thousand people.

## General Crash Information

Since 1995 the number of crashes has shown no consistent pattern. Fatal and injury crashes have also shown no consistent pattern since 1995. Belt usage (as a percentage) is unchanged from last year, while belt usage in crashes involving visible and incapacitating injuries has increased.

## Alcohol-related Crash Information

Information about alcohol-involved crashes is included in all sections of this report. Of the 201 people convicted of DWI in Rio Arriba County in 2004, 50 percent were first-time DWI convictions (number of first convictions 100 divided by the total number of people convicted 201 multiplied by 100). The corresponding percentage for the state was 62.

## Crash Specifics

Crashes involving other vehicles were the most common class, accounting for 47 percent of all crashes. Crashes involving overturns, other vehicles, and fixed objects were the most common classes which resulted in fatalities. Passenger cars were the vehicle type most often involved in crashes, accounting for 51 percent of all vehicles in crashes. Pickups accounted for 25 percent of vehicles involved in crashes. Together these two vehicle types comprised 77 percent of the vehicles involved in injury crashes. The three most common top contributing factors were excessive speed, driver inattention, and alcohol involvement. There were 24 fatal crashes in 2004. The most common top contributing factor for the fatal crashes was alcohol involvement.

## People in Crashes

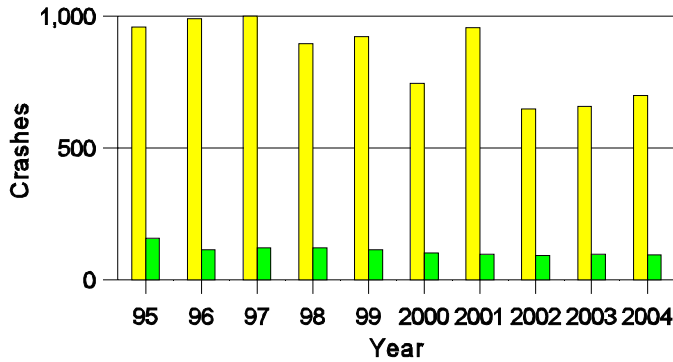
Overall, males were 62 percent of drivers in crashes, although they account for only 49 percent of licensed drivers in Rio Arriba County. There were three pedestrians involved in crashes. In 2004, three 'teenagers' and six young adults were killed in crashes in Rio Arriba County. Statewide 18 percent of alcohol-involved drivers were under 21; in Rio Arriba County 16 percent were under 21.

**Note:** The 1999 crash file contains 15% fewer crashes than the 1998 file. This may be due to problems implementing the new system after the old system failed, or to under reporting. Care should be used in interpreting differences between 1999 and other years in this report.

- Location of arrest/conviction was determined by police agency/court location, not driver residence.
- Crashes and drivers were counted by the city of occurrence/residence.
- Population was counted according to the Census definition, using 2004 estimates.
- Young adults are people between the ages of 20 and 24.
- 'Teenagers' are people between the ages of 15 and 19.
- Tables only include variable values for which there are data.

### Crashes in Rio Arriba County

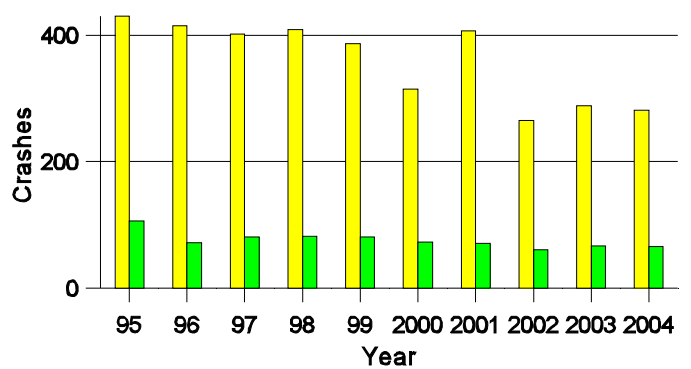
#### by Alcohol Involvement



■ All Crashes  
■ Alcohol-involved Crashes

### Fatal and Injury Crashes in Rio Arriba County

#### by Alcohol Involvement



■ All Fatal and Injury Crashes  
■ Alcohol-involved Fatal and Injury Crashes

### Passenger Vehicle Seatbelt Usage and Injuries in Rio Arriba County, 2002-2004

Injury Level	2004		2003		2002	
	Total	No Belt	Total	No Belt	Total	No Belt
Killed	24	19	10	5	16	9
Incapacitating injury	35	12	64	18	46	10
Visible injury	78	12	78	17	108	22
Complaint of injury	265	17	240	11	213	17
Unhurt	997	25	938	30	905	27
<b>Total</b>	<b>1,399</b>	<b>85</b>	<b>1,330</b>	<b>81</b>	<b>1,288</b>	<b>85</b>

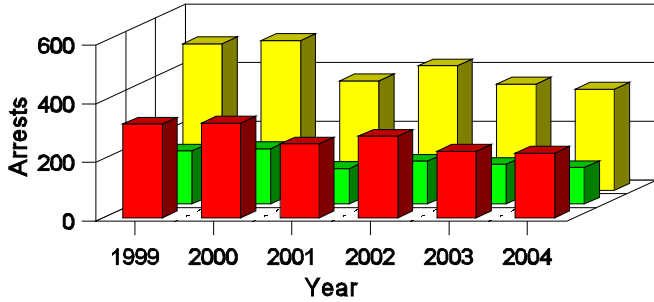
### Lifetime DWI Convictions for Drivers Convicted of DWI Violations in Rio Arriba County, 2004

Convictions	Since 1999	Since 1980
1st	157	100
2nd	32	36
3rd	9	33
4th	3	16
5th	0	7
6th	0	4
7th	0	0
8th	0	3
9th	0	0
10 or more	0	2
<b>Total</b>	<b>201</b>	<b>201</b>

Convictions are counts of people convicted of DWI by 7/2005 for violations in 2004 in Rio Arriba County. Convictions are not comparable to arrests.

### DWI Arrests in Rio Arriba County

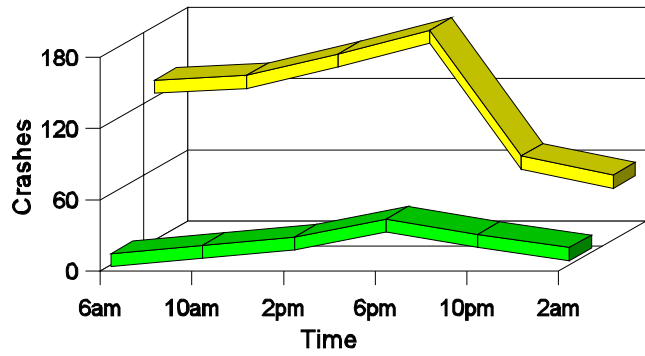
Showing First Arrests and Repeat Offenders



- Total DWI Arrests
- First DWI Arrests
- Repeat DWI Arrests

### Crashes in Rio Arriba County

by Hour and Alcohol Involvement



- All Crashes
- Alcohol-involved Crashes

### Crashes in Rio Arriba County by Class, 2004

Class	Crashes					People	
	Total	% of Total	Fatal	% of Fatal	Injury	Killed	Injured
Other vehicle	331	47	7	29	151	12	282
Pedestrian	3	0	1	4	2	1	3
Fixed object	112	16	2	8	34	2	40
Parked vehicle	14	2	0	0	0	0	0
Overturn	95	14	11	46	52	14	77
Other non-collision	17	2	1	4	6	1	9
Railroad train	1	0	0	0	0	0	0
Animal	119	17	1	4	11	1	12
Other object	6	1	1	4	1	1	3
<b>Total</b>	<b>698</b>	<b>100</b>	<b>24</b>	<b>100</b>	<b>257</b>	<b>32</b>	<b>426</b>

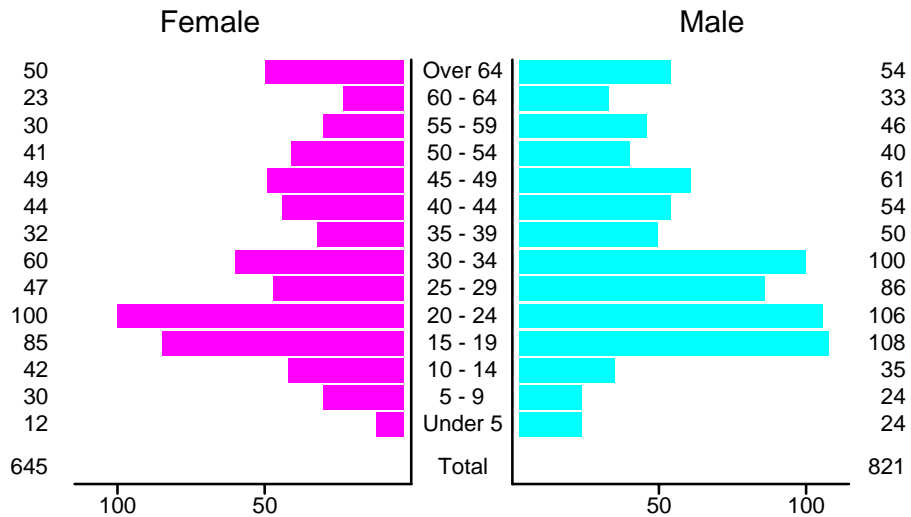
### Crashes in Rio Arriba County by Vehicle Type, 2004

Vehicle Type	Vehicles					People	
	Total	% of Total	Fatal	% of Fatal	Injury	Killed	Injured
Passenger car	547	51	15	44	243	17	270
Pickup	271	25	13	38	83	12	73
Semi	28	3	1	3	11	0	6
Bus	5	0	0	0	0	0	0
Motorcycle	23	2	1	3	19	1	20
Pedestrian	3	0	1	3	2	1	2
Van/4 WD	136	13	3	9	43	1	47
Other	3	0	0	0	2	0	1
Unknown	52	5	0	0	19	0	7
<b>Total</b>	<b>1,068</b>	<b>100</b>	<b>34</b>	<b>100</b>	<b>422</b>	<b>32</b>	<b>426</b>

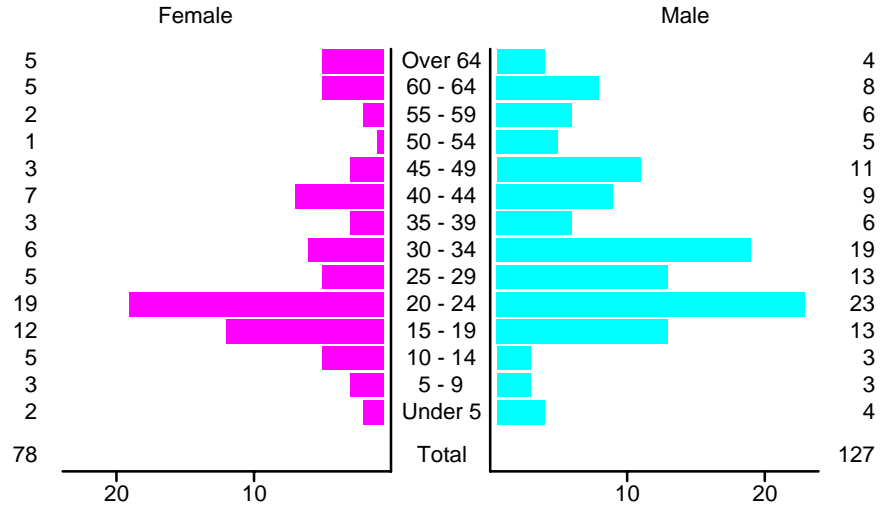
### Crashes in Rio Arriba County by Top Contributing Factor, 2004

Contributing Factor	Crashes				People		
	Total	% of Total	Fatal	% of Fatal	Injury	Killed	Injured
Alcohol involvement	95	14	14	58	52	18	99
Red light running	12	2	0	0	5	0	6
Failing to yield	78	11	1	4	39	1	72
Excessive speed	136	19	6	25	52	9	79
Driving left of center	21	3	1	4	9	2	15
Following too close	66	9	0	0	29	0	46
Improper turning	14	2	0	0	7	0	16
Improper overtaking	11	2	0	0	5	0	6
Improper backing	5	1	0	0	1	0	1
Mechanical defect	4	1	0	0	1	0	1
Driver inattention	101	14	1	4	37	1	61
Other	155	22	1	4	20	1	24
<b>Total</b>	<b>698</b>	<b>100</b>	<b>24</b>	<b>100</b>	<b>257</b>	<b>32</b>	<b>426</b>

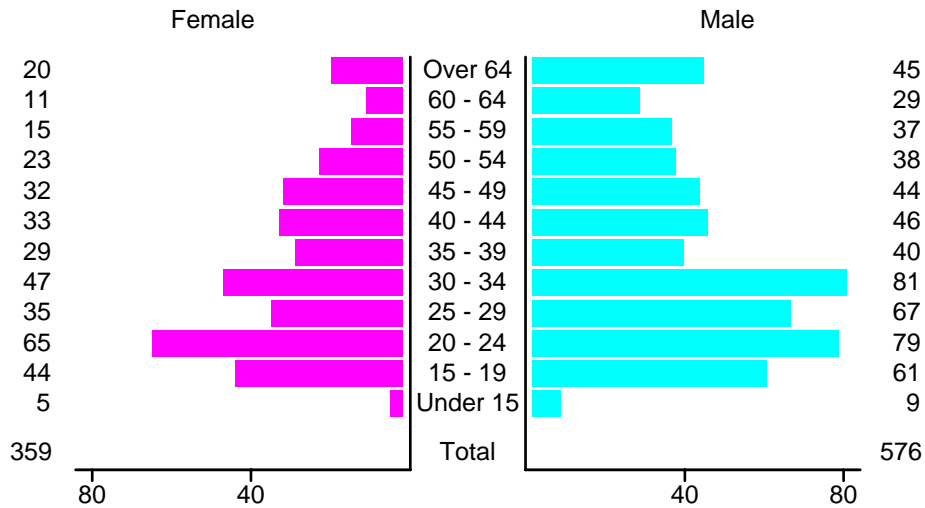
### People in Crashes by Age and Sex in Rio Arriba County, 2004



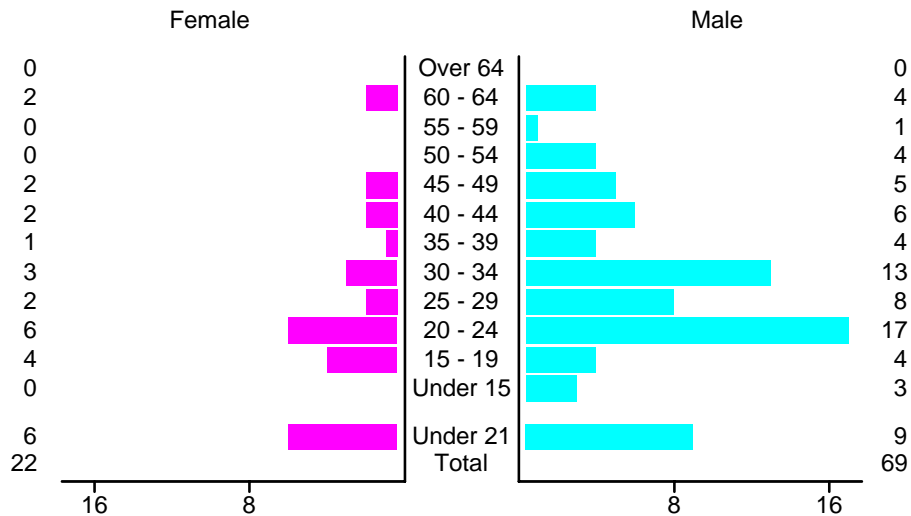
### People in Alcohol-Involved Crashes in Rio Arriba County, 2004 by Age and Sex



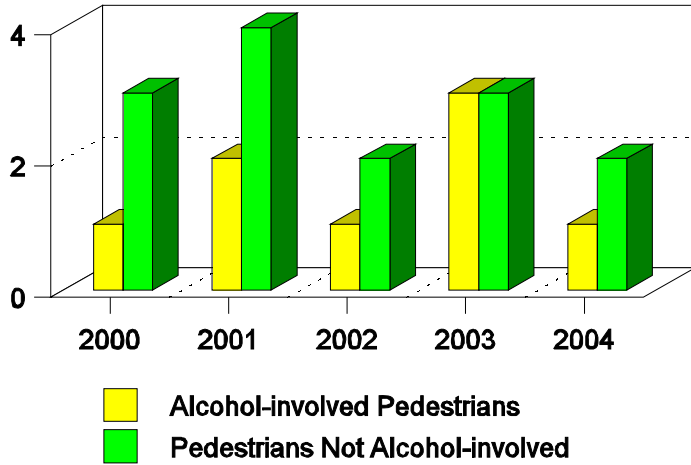
### Drivers in Crashes by Age and Sex in Rio Arriba County, 2004



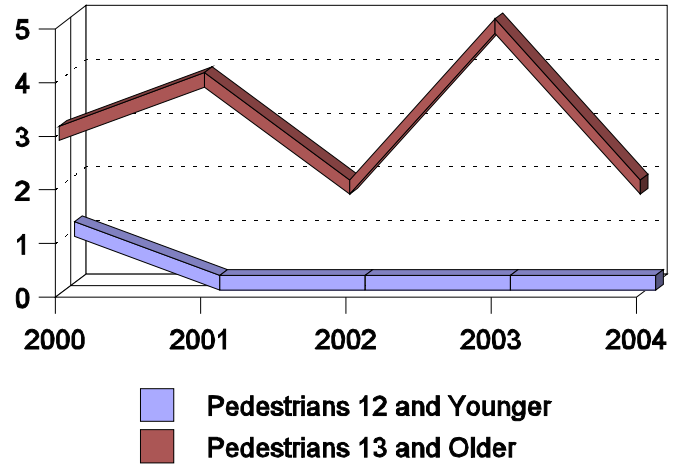
### Alcohol-Involved Drivers in Crashes in Rio Arriba County, 2004 by Age and Sex



**Pedestrian Crashes in Rio Arriba County  
by Pedestrian Alcohol-involvement, 2000-2004**



**Pedestrian Crashes in Rio Arriba County  
by Age Group, 2000-2004**



**'Teenagers' and Young Adults in Crashes in Rio Arriba County by Vehicle Type, 2004**

Vehicle	'Teenage' Drivers			Young Adult Drivers		
	Total	Fatal	Injury	Total	Fatal	Injury
Passenger car	81	2	37	104	5	60
Pickup	13	0	4	30	2	4
Semi	0	0	0	2	0	2
Motorcycle	2	0	2	0	0	0
Pedestrian	0	0	0	1	1	0
Van/4 WD	9	0	5	9	0	3
Unknown	0	0	0	1	0	1
<b>Total</b>	<b>105</b>	<b>2</b>	<b>48</b>	<b>147</b>	<b>8</b>	<b>70</b>

**'Teenagers' and Young Adults in Crashes in Rio Arriba County, 1995-2004**

Year	'Teenagers'				Young Adults			
	All Crashes		Alcohol Crashes		All Crashes		Alcohol Crashes	
	Killed	Injured	Killed	Injured	Killed	Injured	Killed	Injured
2004	3	62	0	16	6	69	4	22
2003	1	80	1	24	3	56	2	17
2002	7	53	2	10	2	60	2	19
2001	2	109	2	14	0	66	0	17
2000	4	74	2	14	3	55	1	19
1999	4	112	3	21	1	80	1	18
1998	3	124	3	29	1	82	1	22
1997	4	99	4	30	3	93	3	25
1996	3	109	3	22	5	104	3	16
1995	2	164	1	44	4	87	4	24