

# Rio Rancho Community Report, 2004

## Demographics

In 2004, there were 45,500 licensed drivers in Rio Rancho. Of these, there were 23,276 females and 22,224 males. The population of Rio Rancho was 61,953. The total number of crashes in 2004 was 1,103, yielding a crash rate of 18 per thousand people (total number of crashes 1,103 divided by total population 61,953 times 1,000). The corresponding rate for the state was 27 per thousand people.

## General Crash Information

Since 1995 the number of crashes has shown no consistent pattern. Fatal and injury crashes have also shown no consistent pattern since 1995. Belt usage (as a percentage) has increased from last year, while belt usage in crashes involving visible and incapacitating injuries has also increased. There were no fatalities in the seven intersections with the most crashes in 2004. Of these intersections, six involve Rio Rancho Drive.

## Alcohol-related Crash Information

Information about alcohol-involved crashes is included in all sections of this report. Of the 123 people convicted of DWI in Rio Rancho, 63 percent were first-time DWI convictions (number of first convictions 78 divided by the total number of people convicted 123 times 100). The corresponding percent for the state is 62.

## Crash Specifics

Crashes involving other vehicles were the most common class, accounting for 74 percent of all crashes. Passenger cars were the vehicle type most often involved in crashes, accounting for 52 percent of all vehicles in crashes. Pickups accounted for 22 percent of vehicles involved in crashes. Together these two vehicle types comprised 74 percent of the vehicles involved in injury crashes. The three most common top contributing factors were driver inattention, following too close, and failing to yield. There were no fatal crashes in 2004.

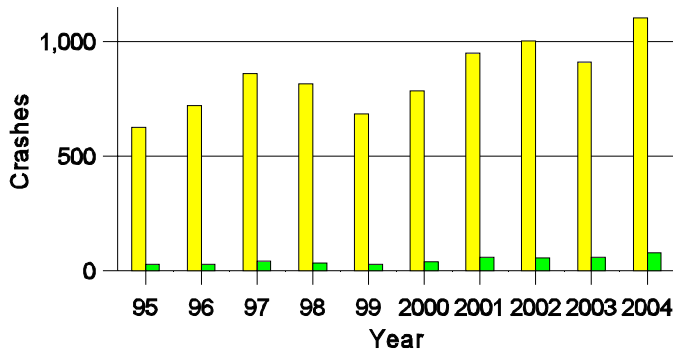
## People in Crashes

Overall, males were 54 percent of drivers in crashes, although they account for only 49 percent of licensed drivers in Rio Rancho. More pedestrians were in crashes than last year. No 'teenagers' or young adults were killed in crashes in 2004. Statewide 18 percent of alcohol-involved drivers were under 21; in Rio Rancho 23 percent were under 21.

**Note:** The 1999 crash file contains 15% fewer crashes than the 1998 file. This may be due to problems implementing the new system after the old system failed, or to under reporting. Care should be used in interpreting differences between 1999 and other years in this report.

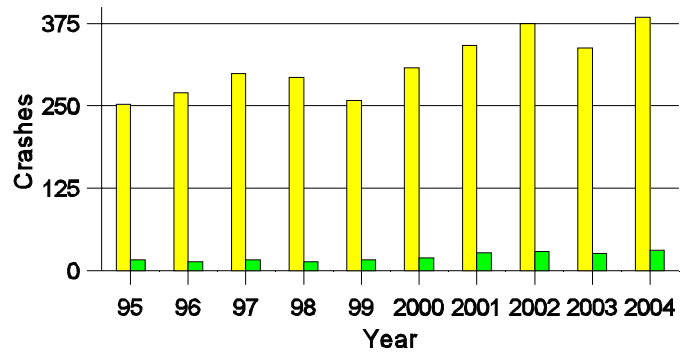
- Location of arrest/conviction was determined by police agency/court location, not driver residence.
- Crashes and drivers were counted by the city of occurrence/residence.
- Population was counted according to the Census definition. The city population data is from the most current 2004 estimates.
- Young adults are people between the ages of 20 and 24.
- 'Teenagers' are people between the ages of 15 and 19.
- Tables only include variable values for which there are data.

### Crashes in Rio Rancho by Alcohol Involvement



■ All Crashes  
■ Alcohol-involved Crashes

### Fatal and Injury Crashes in Rio Rancho by Alcohol Involvement



■ All Fatal and Injury Crashes  
■ Alcohol-involved Fatal and Injury Crashes

### Passenger Vehicle Seatbelt Usage and Injuries in Rio Rancho, 2002-2004

Injury Level	2004		2003		2002	
	Total	No Belt	Total	No Belt	Total	No Belt
Killed	0	0	3	2	2	2
Incapacitating injury	40	5	47	5	34	3
Visible injury	94	3	79	4	54	8
Complaint of injury	355	3	305	5	365	4
Unhurt	2,172	12	1,669	6	1,953	21
<b>Total</b>	<b>2,661</b>	<b>23</b>	<b>2,103</b>	<b>22</b>	<b>2,408</b>	<b>38</b>

### The Seven Intersections in Rio Rancho with the Most Crashes, 2004

Intersection	Crashes			People	
	Total	Fatal	Injury	Killed	Injured
19th Ave @ Rio Rancho Dr	30	0	10	0	14
High Resort Blvd @ Rio Rancho Dr	22	0	7	0	11
Northern Blvd @ Unser Blvd	22	0	7	0	12
Ridgecrest Dr @ Rio Rancho Dr	29	0	12	0	17
Rio Rancho Dr @ Sabana Grande Ave	29	0	12	0	17
Rio Rancho Dr @ Sara Rd	48	0	21	0	28
Rio Rancho Dr @ Southern Blvd	53	0	17	0	21

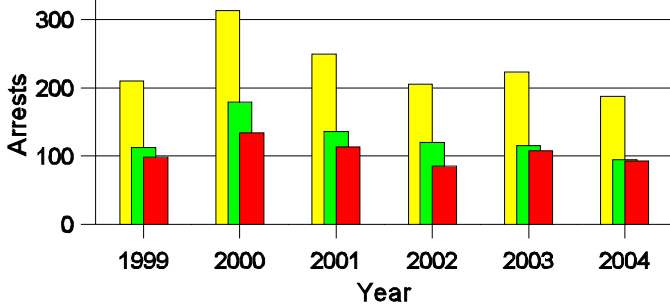
**Lifetime DWI Convictions for Drivers  
Convicted of DWI Violations in Rio Rancho, 2004**

Convictions	Since 1999	Since 1980
1st	97	78
2nd	22	31
3rd	4	12
4th	0	2
5th	0	0
6th	0	0
7th	0	0
8th	0	0
9th	0	0
10 or more	0	0
<b>Total</b>	<b>123</b>	<b>123</b>

Convictions are counts of people convicted of DWI by 7/2005 for violations in 2004 in Rio Rancho.  
Convictions are not comparable to arrests.

**DWI Arrests in Rio Rancho**

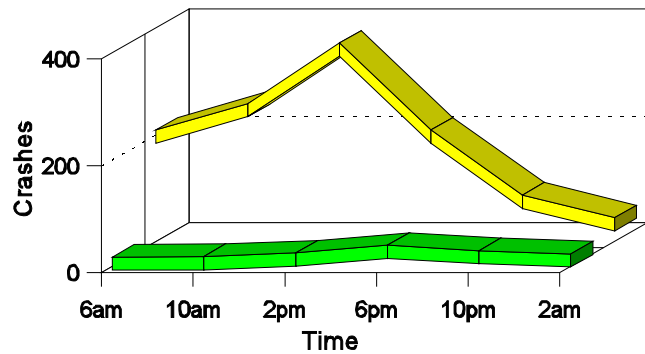
Showing First Arrests and Repeat Offenders



■ Total DWI Arrests  
■ First DWI Arrests  
■ Repeat DWI Arrests

**Crashes in Rio Rancho**

by Hour and Alcohol Involvement



■ All Crashes  
■ Alcohol-involved Crashes

**Crashes in Rio Rancho by Class, 2004**

Class	Crashes				People		
	Total	% of Total	Fatal	% of Fatal	Injury	Killed	Injured
Other vehicle	814	74	0	0	311	0	481
Pedestrian	8	1	0	0	6	0	6
Fixed object	141	13	0	0	27	0	38
Parked vehicle	68	6	0	0	3	0	3
Overturn	43	4	0	0	23	0	41
Other non-collision	9	1	0	0	3	0	3
Pedalcyclist	12	1	0	0	11	0	11
Animal	3	0	0	0	0	0	0
Other object	5	0	0	0	1	0	1
<b>Total</b>	<b>1,103</b>	<b>100</b>	<b>0</b>	<b>0</b>	<b>385</b>	<b>0</b>	<b>584</b>

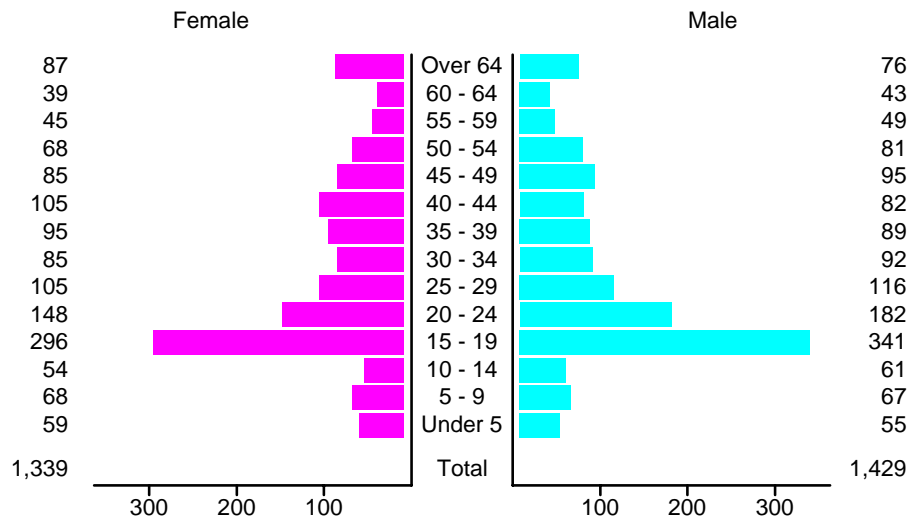
### Crashes in Rio Rancho by Vehicle Type, 2004

Vehicle Type	Vehicles					People	
	Total	% of Total	Fatal	% of Fatal	Injury	Killed	Injured
Passenger car	1,106	52	0	0	418	0	335
Pickup	471	22	0	0	159	0	98
Semi	29	1	0	0	8	0	2
Bus	2	0	0	0	1	0	1
Motorcycle	26	1	0	0	16	0	17
Pedalcyclist	14	1	0	0	13	0	13
Pedestrian	8	0	0	0	6	0	6
Van/4 WD	378	18	0	0	141	0	108
Other	4	0	0	0	1	0	0
Unknown	81	4	0	0	18	0	4
<b>Total</b>	<b>2,119</b>	<b>100</b>	<b>0</b>	<b>0</b>	<b>781</b>	<b>0</b>	<b>584</b>

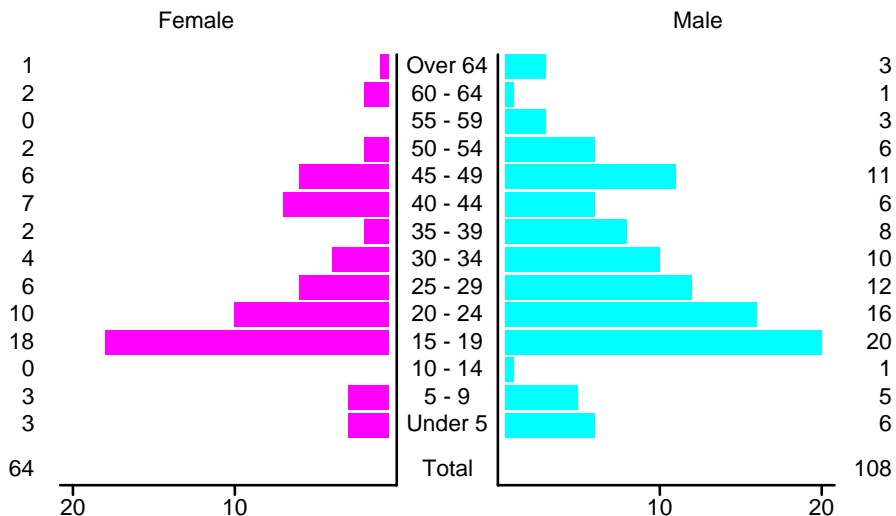
### Crashes in Rio Rancho by Top Contributing Factor, 2004

Contributing Factor	Crashes					People	
	Total	% of Total	Fatal	% of Fatal	Injury	Killed	Injured
Alcohol involvement	79	7	0	0	31	0	55
Red light running	61	6	0	0	31	0	56
Failing to yield	181	16	0	0	77	0	119
Excessive speed	108	10	0	0	41	0	64
Driving left of center	18	2	0	0	2	0	2
Following too close	231	21	0	0	92	0	136
Improper turning	42	4	0	0	7	0	8
Improper overtaking	7	1	0	0	2	0	2
Improper backing	50	5	0	0	2	0	2
Mechanical defect	19	2	0	0	8	0	13
Driver inattention	251	23	0	0	79	0	114
Improper driving	1	0	0	0	0	0	0
Other	55	5	0	0	13	0	13
<b>Total</b>	<b>1,103</b>	<b>100</b>	<b>0</b>	<b>0</b>	<b>385</b>	<b>0</b>	<b>584</b>

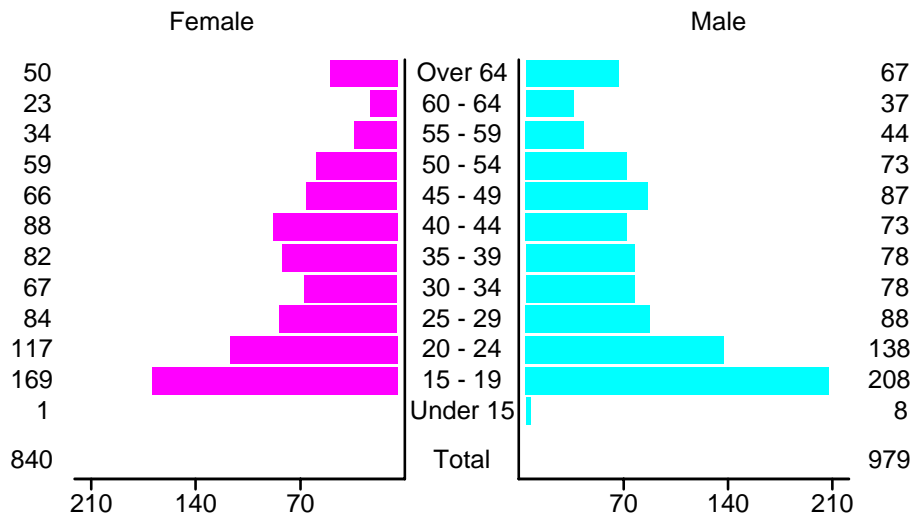
### People in Crashes by Age and Sex in Rio Rancho, 2004



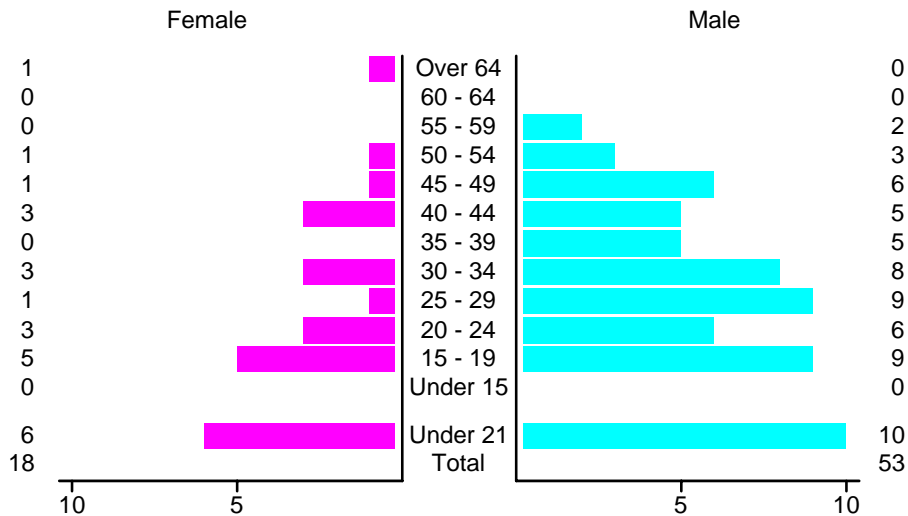
### People in Alcohol-Involved Crashes in Rio Rancho, 2004 by Age and Sex



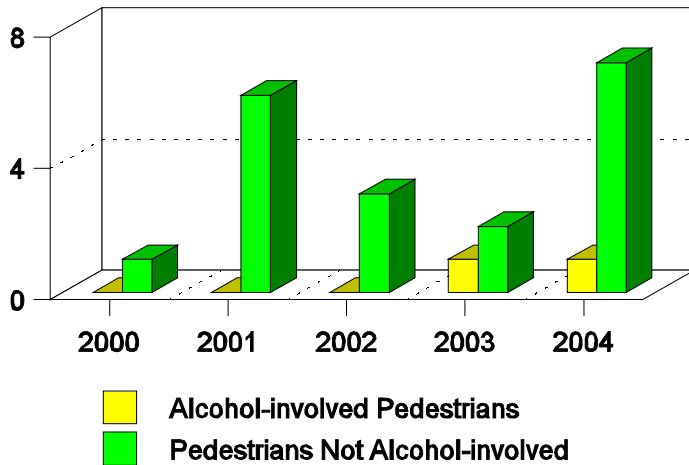
### Drivers in Crashes by Age and Sex in Rio Rancho, 2004



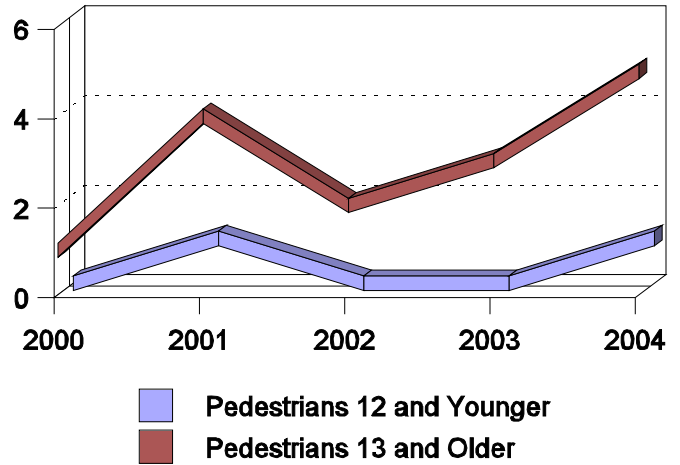
### Alcohol-Involved Drivers in Crashes in Rio Rancho, 2004 by Age and Sex



**Pedestrian in Crashes in Rio Rancho  
by Pedestrian Alcohol-involvement, 2000-2004**



**Pedestrian in Crashes in Rio Rancho  
by Age Group, 2000-2004**



**'Teenagers' and Young Adults in Crashes in Rio Rancho by Vehicle Type, 2004**

Vehicle	'Teenage' Drivers			Young Adult Drivers		
	Total	Fatal	Injury	Total	Fatal	Injury
Passenger car	252	0	98	159	0	59
Pickup	63	0	21	60	0	20
Semi	0	0	0	1	0	0
Motorcycle	4	0	2	2	0	2
Pedalcyclist	3	0	3	1	0	1
Pedestrian	0	0	0	1	0	1
Van/4 WD	57	0	20	32	0	14
Unknown	1	0	0	3	0	1
<b>Total</b>	<b>380</b>	<b>0</b>	<b>144</b>	<b>259</b>	<b>0</b>	<b>98</b>

**'Teenagers' and Young Adults Killed and Injured in Crashes by Year in Rio Rancho, 1995-2004**

Year	'Teenagers'				Young Adults			
	All Crashes		Alcohol Crashes		All Crashes		Alcohol Crashes	
	Killed	Injured	Killed	Injured	Killed	Injured	Killed	Injured
2004	0	121	0	10	0	64	0	11
2003	1	107	0	3	4	52	1	11
2002	1	105	1	4	1	57	1	8
2001	0	93	0	6	0	50	0	5
2000	1	112	1	5	1	40	1	2
1999	1	69	0	3	1	41	1	2
1998	0	87	0	2	0	41	0	5
1997	0	73	0	2	0	49	0	2
1996	0	90	0	8	1	35	1	4
1995	1	54	0	3	1	25	1	0