

Silver City Community Report, 2004

Demographics

In 2004, there were 13,947 licensed drivers in Silver City. Of these, there were 7,080 females and 6,867 males. The population of Silver City was 9,911. The total number of crashes in 2004 was 396, yielding a crash rate of 40 per thousand people (total number of crashes 396 divided by total population 9,911 times 1,000). The corresponding rate for the state was 27 per thousand people.

General Crash Information

Since 2001 the number of crashes has shown a downward trend. Fatal and injury crashes have also shown a downward trend since 2001. Belt usage (as a percentage) increased from last year, while belt usage in crashes involving visible and incapacitating injuries has decreased. There were no fatalities in the seven intersections with the most crashes in 2004. Of these intersections, six involve Silver Heights Blvd.

Alcohol-related Crash Information

Information about alcohol-involved crashes is included in all sections of this report. Of the 44 people convicted of DWI in Silver City, 64 percent were first-time DWI convictions (number of first convictions 28 divided by the total number of people convicted 44 times 100). The corresponding percent for the state is 62.

Crash Specifics

Crashes involving other vehicles were the most common class, accounting for 67 percent of all crashes. Passenger cars were the vehicle type most often involved in crashes, accounting for 50 percent of all vehicles in crashes. Pickups accounted for 28 percent of vehicles involved in crashes. Together these two vehicle types comprised 73 percent of the vehicles involved in injury crashes. The three most common top contributing factors were following too close, driver inattention, and failing to yield. There were no fatal crashes in 2004.

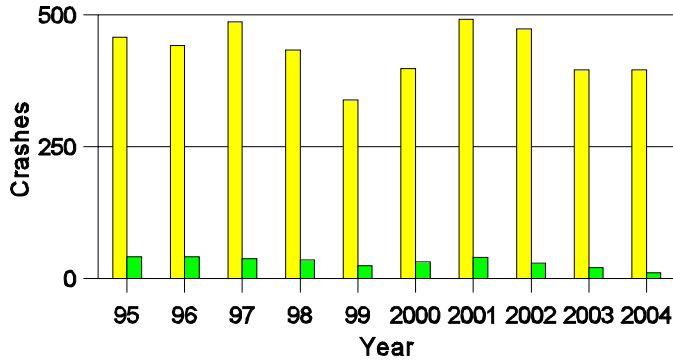
People in Crashes

Overall, males were 54 percent of drivers in crashes, and they also account for 49 percent of licensed drivers in Silver City. Three pedestrians were involved in crashes. No 'teenagers' or young adults were killed in crashes. Statewide 18 percent of alcohol-involved drivers were under 21; in Silver City none were under 21.

Note: The 1999 crash file contains 15% fewer crashes than the 1998 file. This may be due to problems implementing the new system after the old system failed, or to under reporting. Care should be used in interpreting differences between 1999 and other years in this report.

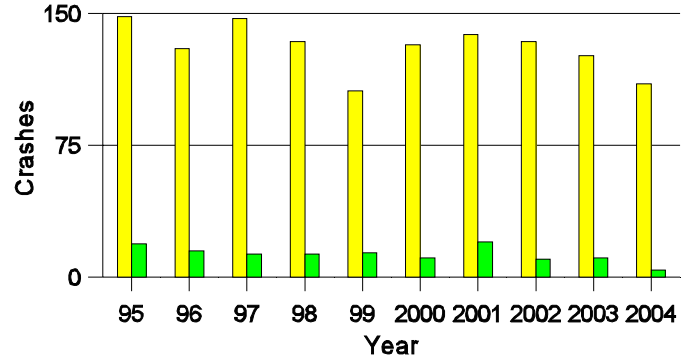
- Location of arrest/conviction was determined by police agency/court location, not driver residence.
- Crashes and drivers were counted by the city of occurrence/residence.
- Population was counted according to the Census definition. The city population data is from the most current 2004 estimates.
- Young adults are people between the ages of 20 and 24.
- 'Teenagers' are people between the ages of 15 and 19.
- Tables only include variable values for which there are data.

Crashes in Silver City by Alcohol Involvement



■ All Crashes
■ Alcohol-involved Crashes

Fatal and Injury Crashes in Silver City by Alcohol Involvement



■ All Fatal and Injury Crashes
■ Alcohol-involved Fatal and Injury Crashes

Passenger Vehicle Seatbelt Usage and Injuries in Silver City, 2002-2004

Injury Level	2004		2003		2002	
	Total	No Belt	Total	No Belt	Total	No Belt
Killed	0	0	0	0	2	0
Incapacitating injury	8	3	7	2	6	1
Visible injury	26	3	21	2	24	6
Complaint of injury	97	1	130	7	127	5
Unhurt	726	6	757	8	892	16
Total	857	13	915	19	1,051	28

The Seven Intersections in Silver City with the Most Crashes, 2004

Intersection	Crashes			People	
	Total	Fatal	Injury	Killed	Injured
12th St @ Pope St	8	0	2	0	4
14th St @ Silver Heights Blvd	12	0	4	0	7
32nd St By-pass @ Silver Heights Blvd	10	0	4	0	8
Hudson St @ Silver Heights Blvd	24	0	8	0	11
Memory Ln @ Silver Heights Blvd	18	0	2	0	3
Pinos Altos Rd @ Silver Heights Blvd	13	0	4	0	6
Silver Heights Blvd @ Silver St	9	0	3	0	4

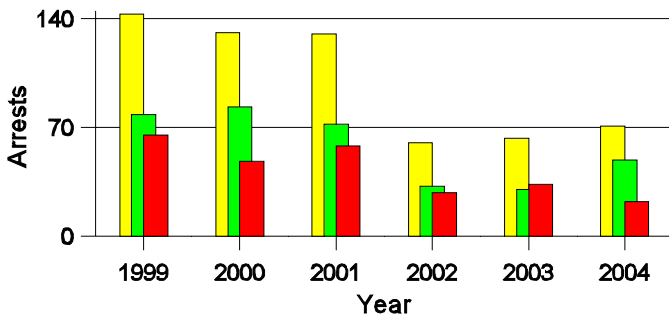
**Lifetime DWI Convictions for Drivers
Convicted of DWI Violations in Silver City, 2004**

Convictions	Since 1999	Since 1980
1st	37	28
2nd	5	6
3rd	2	4
4th	0	4
5th	0	2
6th	0	0
7th	0	0
8th	0	0
9th	0	0
10 or more	0	0
Total	44	44

Convictions are counts of people convicted of DWI by 7/2005 for violations in 2004 in Silver City.
Convictions are not comparable to arrests.

DWI Arrests in Silver City

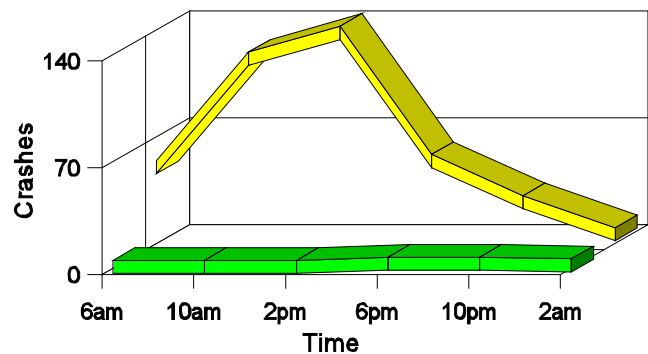
Showing First Arrests and Repeat Offenders



■ Total DWI Arrests
■ First DWI Arrests
■ Repeat DWI Arrests

Crashes in Silver City

by Hour and Alcohol Involvement



■ All Crashes
■ Alcohol-involved Crashes

Crashes in Silver City by Class, 2004

Class	Crashes				People		
	Total	% of Total	Fatal	% of Fatal	Injury	Killed	Injured
Other vehicle	265	67	0	0	80	0	116
Pedestrian	3	1	0	0	3	0	3
Fixed object	36	9	0	0	6	0	7
Veh. on other roadway	1	0	0	0	0	0	0
Parked vehicle	55	14	0	0	6	0	7
Overturn	9	2	0	0	6	0	9
Other non-collision	2	1	0	0	1	0	1
Pedalcyclist	8	2	0	0	7	0	7
Animal	14	4	0	0	1	0	1
Other object	3	1	0	0	0	0	0
Total	396	100	0	0	110	0	151

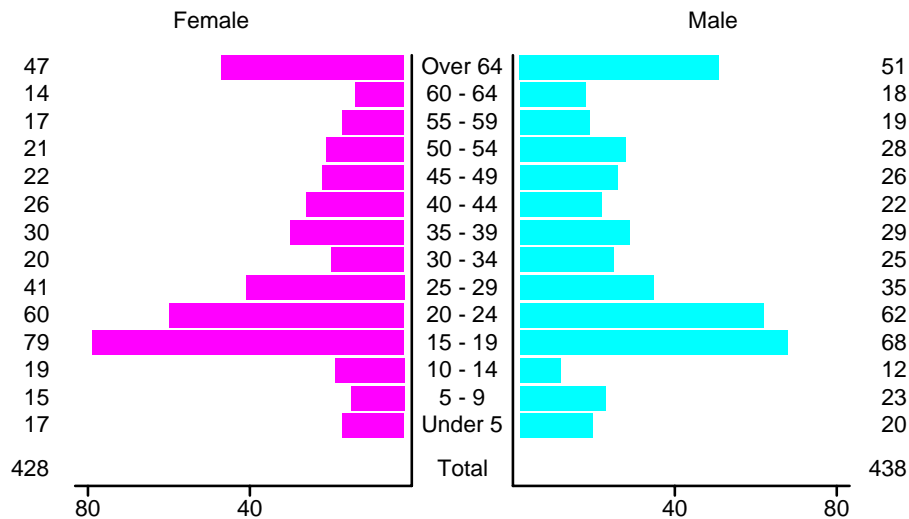
Crashes in Silver City by Vehicle Type, 2004

Vehicle Type	Vehicles					People	
	Total	% of Total	Fatal	% of Fatal	Injury	Killed	Injured
Passenger car	371	50	0	0	101	0	78
Pickup	206	28	0	0	55	0	36
Semi	6	1	0	0	2	0	0
Bus	1	0	0	0	1	0	0
Motorcycle	9	1	0	0	5	0	5
Pedalcyclist	8	1	0	0	7	0	7
Pedestrian	3	0	0	0	3	0	3
Van/4 WD	100	13	0	0	36	0	22
Other	3	0	0	0	2	0	0
Unknown	40	5	0	0	1	0	0
Total	747	100	0	0	213	0	151

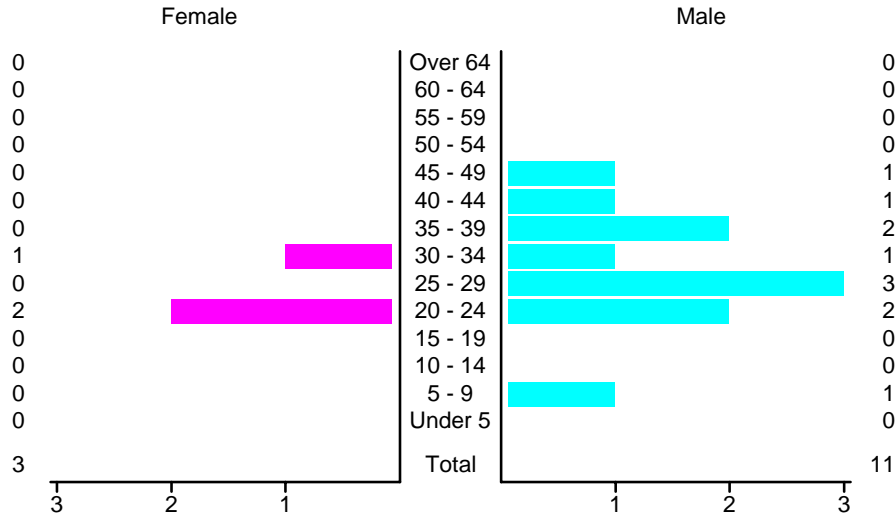
Crashes in Silver City by Top Contributing Factor, 2004

Contributing Factor	Crashes					People	
	Total	% of Total	Fatal	% of Fatal	Injury	Killed	Injured
Alcohol involvement	11	3	0	0	4	0	4
Red light running	36	9	0	0	17	0	24
Failing to yield	59	15	0	0	25	0	37
Excessive speed	28	7	0	0	12	0	21
Driving left of center	4	1	0	0	1	0	1
Following too close	89	22	0	0	24	0	31
Improper turning	16	4	0	0	3	0	3
Improper overtaking	3	1	0	0	0	0	0
Improper backing	26	7	0	0	1	0	1
Mechanical defect	12	3	0	0	2	0	4
Driver inattention	83	21	0	0	15	0	19
Improper driving	2	1	0	0	1	0	1
Other	27	7	0	0	5	0	5
Total	396	100	0	0	110	0	151

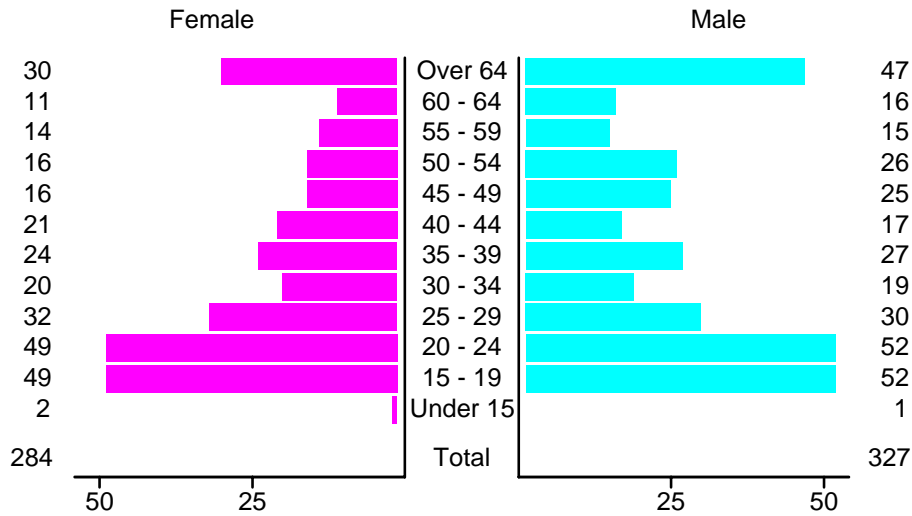
People in Crashes by Age and Sex in Silver City, 2004



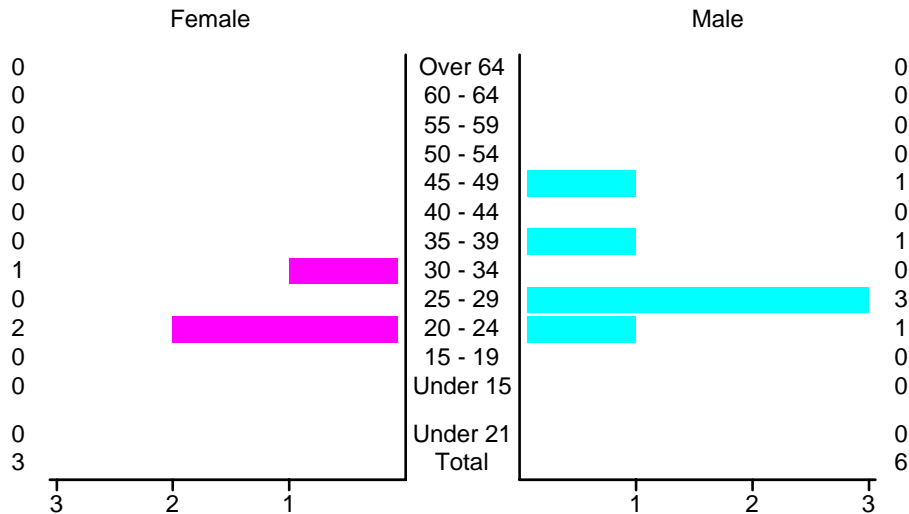
People in Alcohol-Involved Crashes in Silver City, 2004 by Age and Sex



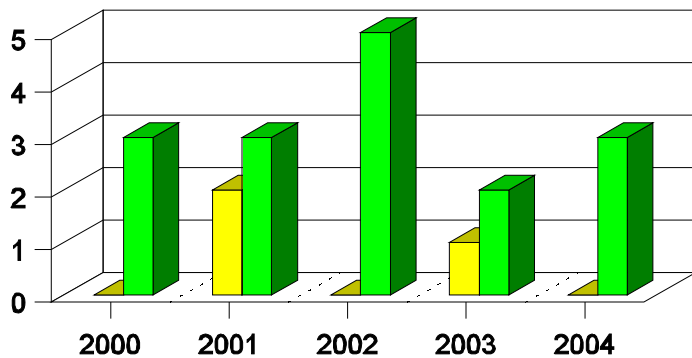
Drivers in Crashes by Age and Sex in Silver City, 2004



Alcohol-Involved Drivers in Crashes in Silver City, 2004 by Age and Sex

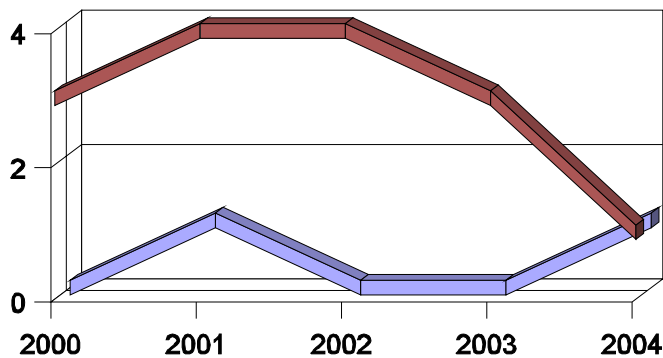


**Pedestrian in Crashes in Silver City
by Pedestrian Alcohol-involvement, 2000-2004**



Alcohol-involved Pedestrians
 Pedestrians Not Alcohol-involved

**Pedestrian in Crashes in Silver City
by Age Group, 2000-2004**



Pedestrians 12 and Younger
 Pedestrians 13 and Older

'Teenagers' and Young Adults in Crashes in Silver City by Vehicle Type, 2004

Vehicle	'Teenage' Drivers			Young Adult Drivers		
	Total	Fatal	Injury	Total	Fatal	Injury
Passenger car	65	0	16	62	0	14
Pickup	28	0	11	28	0	7
Semi	0	0	0	2	0	1
Motorcycle	0	0	0	1	0	1
Pedalcyclist	0	0	0	3	0	3
Pedestrian	0	0	0	1	0	1
Van/4 WD	8	0	3	6	0	1
Unknown	0	0	0	2	0	0
Total	101	0	30	105	0	28

'Teenagers' and Young Adults Killed and Injured in Crashes by Year in Silver City, 1995-2004

Year	'Teenagers'				Young Adults			
	All Crashes		Alcohol Crashes		All Crashes		Alcohol Crashes	
	Killed	Injured	Killed	Injured	Killed	Injured	Killed	Injured
2004	0	18	0	0	0	15	0	2
2003	0	24	0	1	0	31	0	1
2002	0	32	0	1	0	20	0	0
2001	0	29	0	2	0	29	0	7
2000	0	32	0	4	0	22	0	4
1999	0	21	0	3	0	24	0	7
1998	0	40	0	4	0	19	0	4
1997	0	44	0	4	0	30	0	4
1996	0	35	0	4	1	22	1	4
1995	0	51	0	16	0	30	0	5