

Sunland Park Community Report, 2004

Demographics

In 2004, there were 7,100 licensed drivers in Sunland Park. Of these, there were 3,163 females and 3,937 males. The population of Sunland Park was 13,934. The total number of crashes in 2004 was 103, yielding a crash rate of seven per thousand people (total number of crashes 103 divided by total population 13,934 times 1,000). The corresponding rate for the state was 27 per thousand people.

General Crash Information

Since 1995 the number of crashes has shown no consistent pattern. Fatal and injury crashes have also shown no consistent pattern since 1995. Belt usage (as a percentage) increased from last year, while belt usage in crashes involving visible and incapacitating injuries decreased. There were no fatalities in the seven intersections with the most crashes in 2004. Of these intersections, five involve McNutt Highway.

Alcohol-related Crash Information

Information about alcohol-involved crashes is included in all sections of this report. Of the 46 people convicted of DWI in Sunland Park, 65 percent were first-time DWI convictions (number of first convictions 30 divided by the total number of people convicted 46 times 100). The corresponding percent for the state is 62.

Crash Specifics

Crashes involving other vehicles were the most common class, accounting for 72 percent of all crashes. A crash involving a pedestrian resulted in a fatality. Passenger cars were the vehicle type most often involved in crashes, accounting for 53 percent of all vehicles in crashes. Vans/4 WD accounted for 18 percent of vehicles involved in crashes. Together these two vehicle types comprised 79 percent of the vehicles involved in injury crashes. The three most common top contributing factors were following too close, driver inattention, and failing to yield. There was one fatal crash in 2004. The top contributing factor for the fatal crash was 'other.'

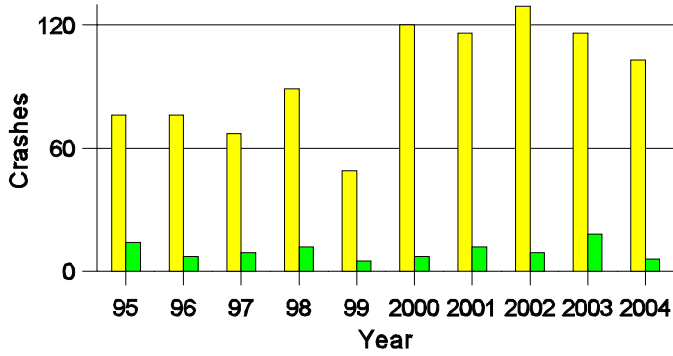
People in Crashes

Overall, males were 59 percent of drivers in crashes, although they account for 55 percent of licensed drivers in Sunland Park. One pedestrian was involved in a crash this year. In 2004, no 'teenagers' or young adults were killed in Sunland Park. Statewide 18 percent of alcohol-involved drivers were under 21; in Sunland Park none were under 21.

Note: The 1999 crash file contains 15% fewer crashes than the 1998 file. This may be due to problems implementing the new system after the old system failed, or to under reporting. Care should be used in interpreting differences between 1999 and other years in this report.

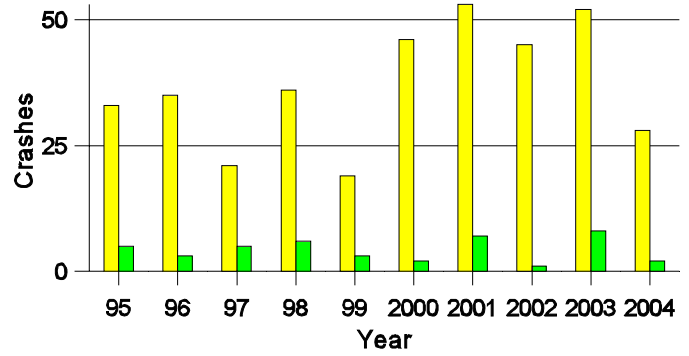
- Location of arrest/conviction was determined by police agency/court location, not driver residence.
- Crashes and drivers were counted by the city of occurrence/residence.
- Population was counted according to the Census definition.
The city population data is from the most current 2004 estimates.
- Young adults are people between the ages of 20 and 24.
- 'Teenagers' are people between the ages of 15 and 19.
- Tables only include variable values for which there are data.

**Crashes in Sunland Park
by Alcohol Involvement**



■ All Crashes
■ Alcohol-involved Crashes

**Fatal and Injury Crashes in Sunland Park
by Alcohol Involvement**



■ All Fatal and Injury Crashes
■ Alcohol-involved Fatal and Injury Crashes

Passenger Vehicle Seatbelt Usage and Injuries in Sunland Park, 2002-2004

Injury Level	2004		2003		2002	
	Total	No Belt	Total	No Belt	Total	No Belt
Killed	0	0	0	0	1	1
Incapacitating injury	7	0	7	1	10	2
Visible injury	7	1	15	0	22	4
Complaint of injury	31	0	54	2	45	1
Unhurt	209	0	232	0	308	2
Total	254	1	308	3	386	10

The Seven Intersections in Sunland Park with the Most Crashes, 2004

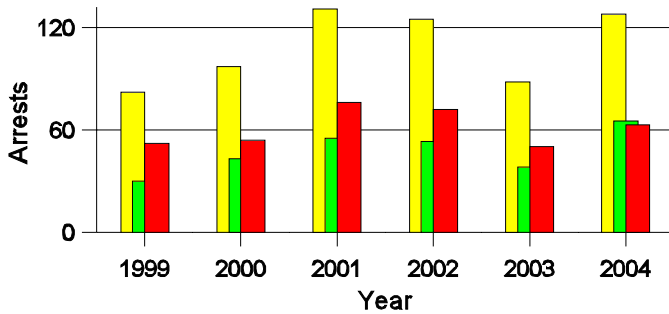
Intersection	Crashes			People	
	Total	Fatal	Injury	Killed	Injured
Aspen Dr @ Mcnutt Hwy	3	0	1	0	2
Buena Vista Dr @ Valle Vista Dr	2	0	0	0	0
Country Club Rd @ Mcnutt Hwy - NM 273	8	0	3	0	5
Edgewood Blvd @ Valle Vista Dr	2	0	0	0	0
Edgewood St @ Mcnutt Hwy	5	0	2	0	4
Loma Vista Ct @ Mcnutt Hwy	2	0	1	0	1
Mcnutt Hwy @ Posey Rd	4	0	2	0	2

**Lifetime DWI Convictions for Drivers
Convicted of DWI Violations in Sunland Park, 2004**

Convictions	Since 1999	Since 1980
1st	38	30
2nd	7	11
3rd	0	2
4th	1	2
5th	0	0
6th	0	1
7th	0	0
8th	0	0
9th	0	0
10 or more	0	0
Total	46	46

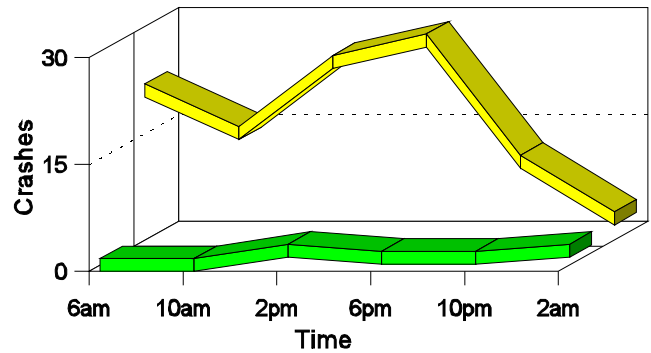
Convictions are counts of people convicted of DWI by 7/2005 for violations in 2004 in Sunland Park.
Convictions are not comparable to arrests.

**DWI Arrests in Sunland Park
Showing First Arrests and Repeat Offenders**



■ Total DWI Arrests
■ First DWI Arrests
■ Repeat DWI Arrests

**Crashes in Sunland Park
by Hour and Alcohol Involvement**



■ All Crashes
■ Alcohol-involved Crashes

Crashes in Sunland Park by Class, 2004

Class	Crashes				People		
	Total	% of Total	Fatal	% of Fatal	Injury	Killed	Injured
Other vehicle	74	72	0	0	22	0	43
Pedestrian	1	1	1	100	0	1	0
Fixed object	7	7	0	0	2	0	4
Parked vehicle	17	17	0	0	1	0	1
Overturn	2	2	0	0	0	0	0
Other non-collision	1	1	0	0	1	0	1
Pedalcyclist	1	1	0	0	1	0	1
Total	103	100	1	100	27	1	50

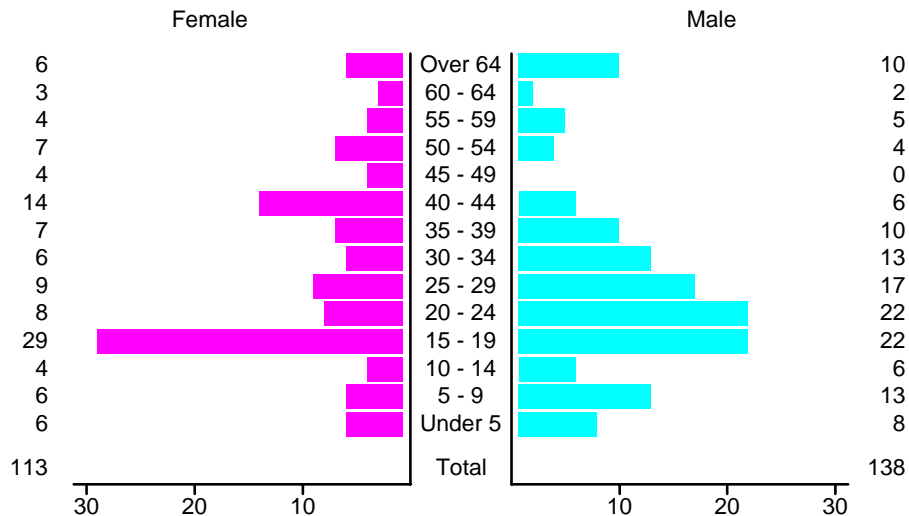
Crashes in Sunland Park by Vehicle Type, 2004

Vehicle Type	Vehicles					People	
	Total	% of Total	Fatal	% of Fatal	Injury	Killed	Injured
Passenger car	108	53	1	50	29	0	30
Pickup	35	17	0	0	7	0	3
Semi	4	2	0	0	0	0	0
Motorcycle	2	1	0	0	1	0	2
Pedalcyclist	1	0	0	0	1	0	1
Pedestrian	1	0	1	50	0	1	0
Van/4 WD	37	18	0	0	13	0	12
Unknown	14	7	0	0	2	0	2
Total	202	100	2	100	53	1	50

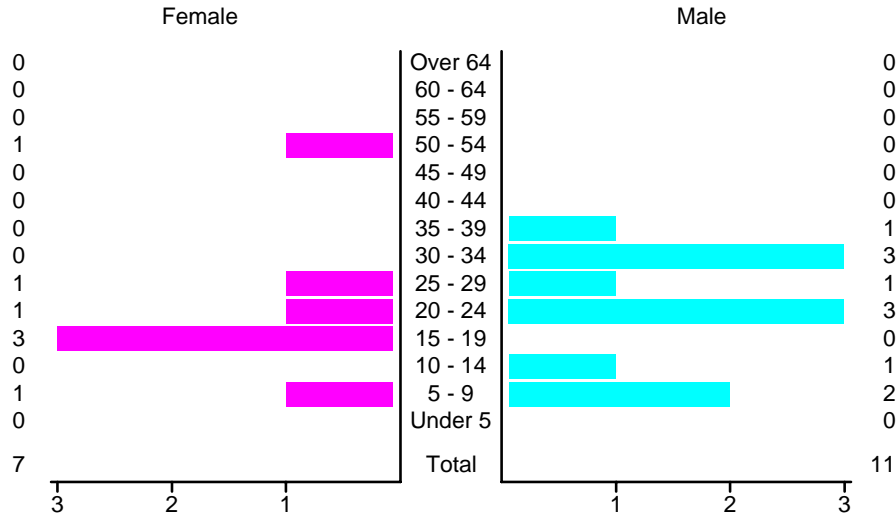
Crashes in Sunland Park by Top Contributing Factor, 2004

Contributing Factor	Crashes					People	
	Total	% of Total	Fatal	% of Fatal	Injury	Killed	Injured
Alcohol involvement	6	6	0	0	2	0	7
Red light running	6	6	0	0	3	0	4
Failing to yield	15	15	0	0	3	0	5
Excessive speed	13	13	0	0	3	0	5
Driving left of center	5	5	0	0	1	0	1
Following too close	23	22	0	0	9	0	17
Improper turning	5	5	0	0	2	0	4
Improper backing	4	4	0	0	0	0	0
Mechanical defect	1	1	0	0	0	0	0
Driver inattention	21	20	0	0	2	0	4
Other	4	4	1	100	2	1	3
Total	103	100	1	100	27	1	50

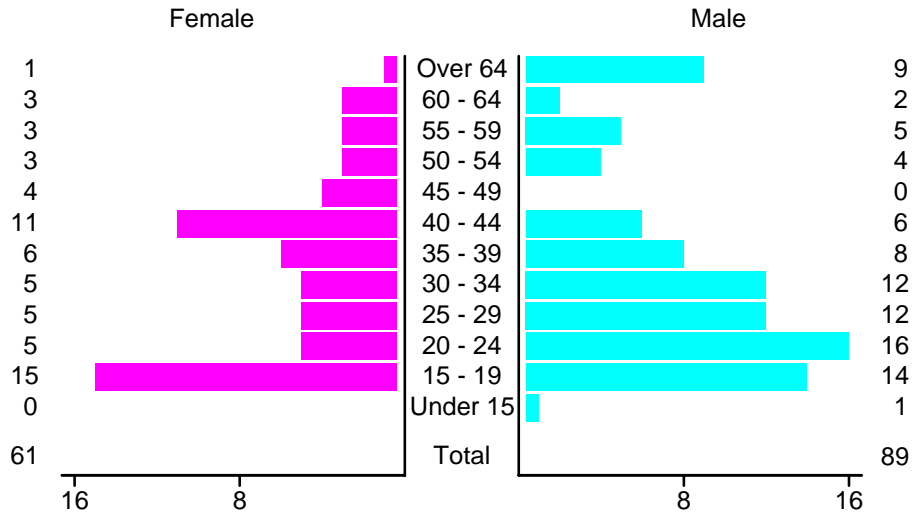
People in Crashes by Age and Sex in Sunland Park, 2004



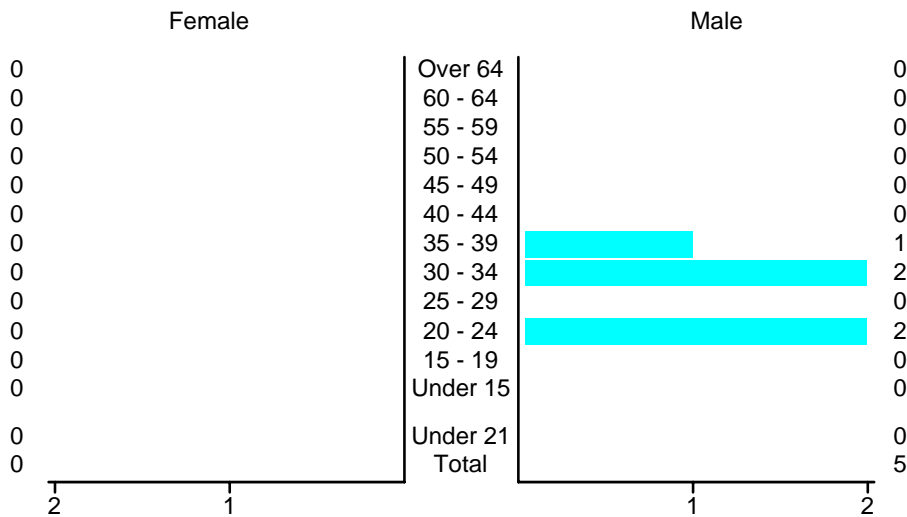
People in Alcohol-Involved Crashes in Sunland Park, 2004 by Age and Sex



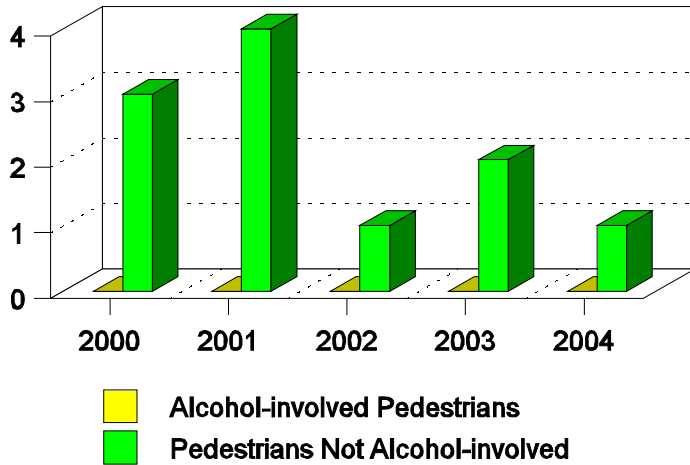
Drivers in Crashes by Age and Sex in Sunland Park, 2004



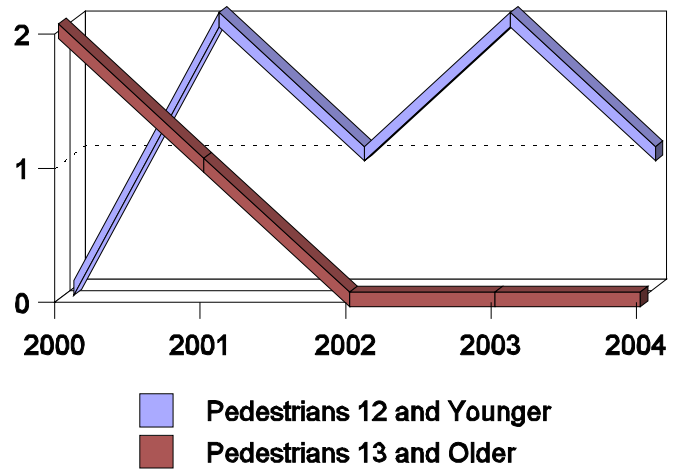
Alcohol-Involved Drivers in Crashes in Sunland Park, 2004 by Age and Sex



**Pedestrian in Crashes in Sunland Park
by Pedestrian Alcohol-involvement, 2000-2004**



**Pedestrian in Crashes in Sunland Park
by Age Group, 2000-2004**



'Teenagers' and Young Adults in Crashes in Sunland Park by Vehicle Type, 2004

Vehicle	'Teenage' Drivers			Young Adult Drivers		
	Total	Fatal	Injury	Total	Fatal	Injury
Passenger car	23	1	7	15	0	3
Pickup	3	0	1	4	0	1
Van/4 WD	3	0	2	2	0	1
Total	29	1	10	21	0	5

'Teenagers' and Young Adults Killed and Injured in Crashes by Year in Sunland Park, 1995-2004

Year	'Teenagers'				Young Adults			
	All Crashes		Alcohol Crashes		All Crashes		Alcohol Crashes	
	Killed	Injured	Killed	Injured	Killed	Injured	Killed	Injured
2004	0	11	0	2	0	3	0	0
2003	0	9	0	0	0	14	0	5
2002	1	12	0	0	0	12	0	0
2001	0	11	0	2	0	15	0	3
2000	0	13	0	0	0	5	0	1
1999	0	1	0	0	0	1	0	1
1998	0	10	0	1	0	9	0	2
1997	0	4	0	1	0	5	0	2
1996	0	8	0	0	0	5	0	1
1995	0	4	0	1	0	11	0	2