

# T or C Community Report, 2004

## Demographics

In 2004, there were 5,236 licensed drivers in T or C. Of these, there were 2,584 females and 2,652 males. The population of T or C was 7,163. The total number of crashes in 2004 was 114, yielding a crash rate of 16 per thousand people (total number of crashes 114 divided by total population 7,163 times 1,000). The corresponding rate for the state was 27 per thousand people.

## General Crash Information

Since 1995 the number of crashes has shown no consistent pattern. Fatal and injury crashes have shown no consistent pattern since 1995. Belt usage (as a percentage) increased from last year, while belt usage in crashes involving visible and incapacitating injuries also increased. There were no fatalities in the seven intersections with the most crashes in 2004. Of these intersections, four involved Third Street.

## Alcohol-related Crash Information

Information about alcohol-involved crashes is included in all sections of this report. Of the 16 people convicted of DWI in T or C, 69 percent were first-time DWI convictions (number of first convictions 11 divided by the total number of people convicted 16 times 100). The corresponding percent for the state is 62.

## Crash Specifics

Crashes involving other vehicles were the most common class, accounting for 54 percent of all crashes. Passenger cars were the vehicle type most often involved in crashes, accounting for 48 percent of all vehicles in crashes. Pickups accounted for 29 percent of vehicles involved in crashes. Together these two vehicle types comprised 80 percent of the vehicles involved in injury crashes. The three most common top contributing factors were failing to yield, excessive speed, and driver inattention. There were no fatal crashes in 2004.

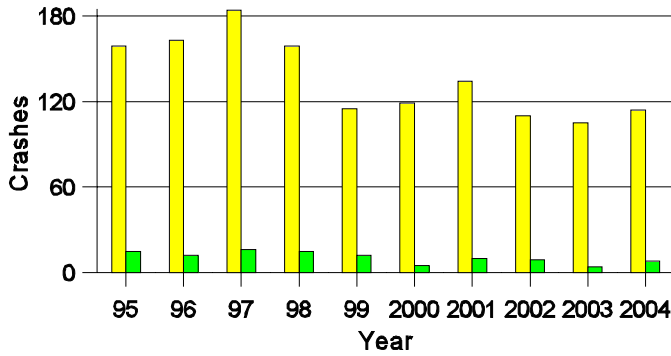
## People in Crashes

Overall, males were 57 percent of drivers in crashes, although they account for 51 percent of licensed drivers in T or C. There were no pedestrians in crashes in 2004. No 'teenagers' or young adults were killed in crashes in 2004. Statewide 18 percent of alcohol-involved drivers were under 21; in T or C 14 percent were under 21.

**Note:** The 1999 crash file contains 15% fewer crashes than the 1998 file. This may be due to problems implementing the new system after the old system failed, or to under reporting. Care should be used in interpreting differences between 1999 and other years in this report.

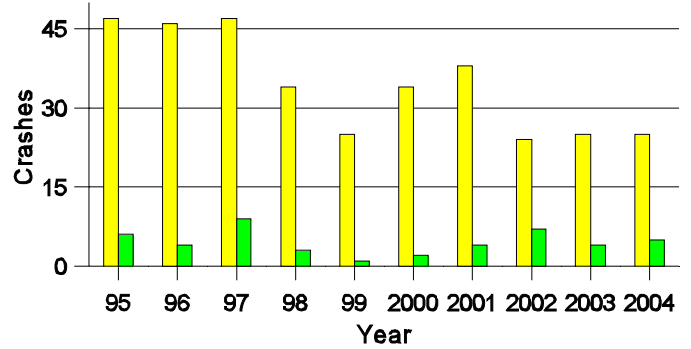
- Location of arrest/conviction was determined by police agency/court location, not driver residence.
- Crashes and drivers were counted by the city of occurrence/residence.
- Population was counted according to the Census definition.  
The city population data is from the most current 2004 estimates.
- Young adults are people between the ages of 20 and 24.
- 'Teenagers' are people between the ages of 15 and 19.
- Tables only include variable values for which there are data.

**Crashes in T or C  
by Alcohol Involvement**



■ All Crashes  
■ Alcohol-involved Crashes

**Fatal and Injury Crashes in T or C  
by Alcohol Involvement**



■ All Fatal and Injury Crashes  
■ Alcohol-involved Fatal and Injury Crashes

**Passenger Vehicle Seatbelt Usage and Injuries in Truth or Consequences, 2002-2004**

Injury Level	2004		2003		2002	
	Total	No Belt	Total	No Belt	Total	No Belt
Killed	0	0	1	1	2	2
Incapacitating injury	5	0	6	1	2	0
Visible injury	8	0	11	1	11	1
Complaint of injury	12	0	11	0	19	0
Unhurt	192	3	191	2	198	6
<b>Total</b>	<b>217</b>	<b>3</b>	<b>220</b>	<b>5</b>	<b>232</b>	<b>9</b>

**The Seven Intersections in Truth or Consequences with the Most Crashes, 2004**

Intersection	Crashes			People	
	Total	Fatal	Injury	Killed	Injured
3rd Ave @ Ash St	7	0	1	0	1
3rd Ave @ Birch St	2	0	2	0	2
3rd Ave @ Cedar St	2	0	2	0	2
3rd Ave @ Date St	3	0	2	0	2
9th Ave @ Date St	3	0	1	0	2
Austin Ave @ Foch St	2	0	0	0	0
Date St @ Riverside Dr	4	0	2	0	2

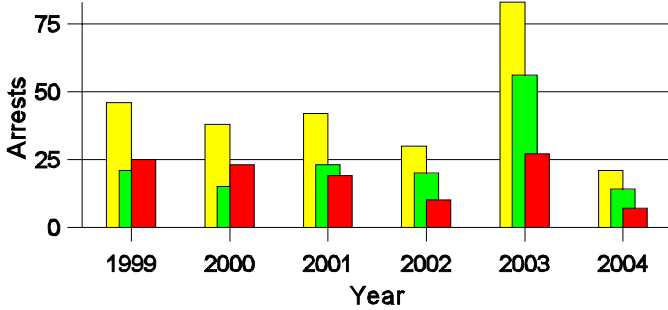
**Lifetime DWI Convictions for Drivers  
Convicted of DWI Violations in Truth or Consequences, 2004**

Convictions	Since 1999	Since 1980
1st	14	11
2nd	2	3
3rd	0	1
4th	0	1
5th	0	0
6th	0	0
7th	0	0
8th	0	0
9th	0	0
10 or more	0	0
<b>Total</b>	<b>16</b>	<b>16</b>

Convictions are counts of people convicted of DWI by 7/2005 for violations in 2004 in Truth or Consequences. Convictions are not comparable to arrests.

**DWI Arrests in T or C**

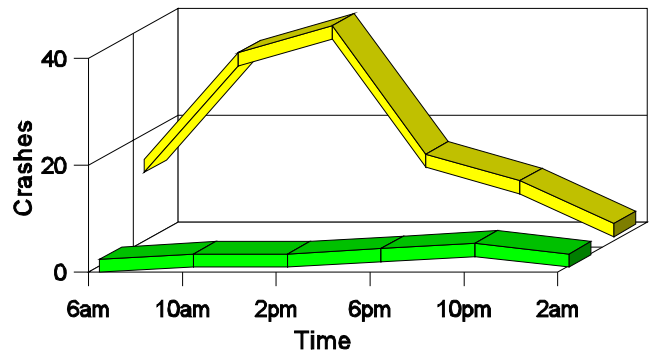
Showing First Arrests and Repeat Offenders



■ Total DWI Arrests  
■ First DWI Arrests  
■ Repeat DWI Arrests

**Crashes in T or C**

by Hour and Alcohol Involvement



■ All Crashes  
■ Alcohol-involved Crashes

**Crashes in Truth or Consequences by Class, 2004**

Class	Crashes				People		
	Total	% of Total	Fatal	% of Fatal	Injury	Killed	Injured
Other vehicle	61	54	0	0	17	0	20
Fixed object	23	20	0	0	7	0	7
Parked vehicle	23	20	0	0	0	0	0
Overturn	5	4	0	0	0	0	0
Pedalcyclist	1	1	0	0	1	0	1
Animal	1	1	0	0	0	0	0
<b>Total</b>	<b>114</b>	<b>100</b>	<b>0</b>	<b>0</b>	<b>25</b>	<b>0</b>	<b>28</b>

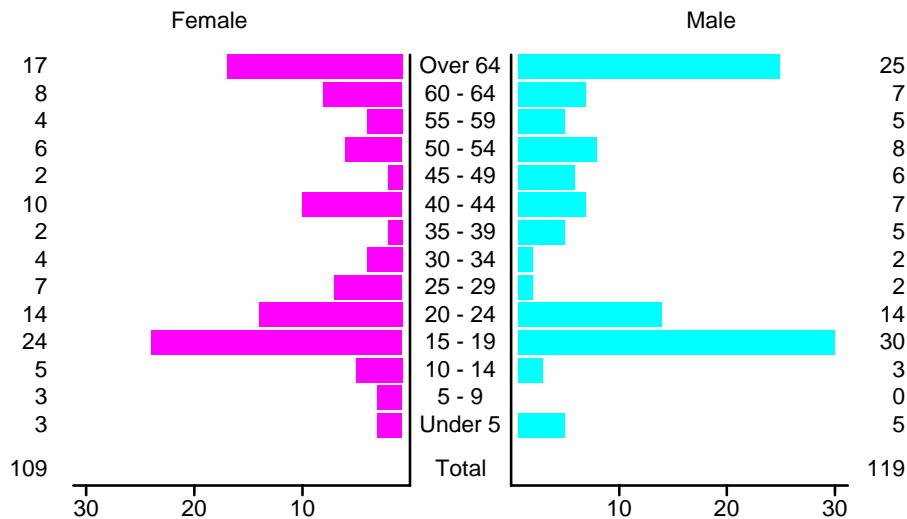
### Crashes in Truth or Consequences by Vehicle Type, 2004

Vehicle Type	Vehicles					People	
	Total	% of Total	Fatal	% of Fatal	Injury	Killed	Injured
Passenger car	97	48	0	0	25	0	14
Pickup	58	29	0	0	11	0	8
Semi	6	3	0	0	0	0	0
Motorcycle	1	0	0	0	1	0	1
Pedalcyclist	1	0	0	0	1	0	1
Van/4 WD	27	13	0	0	7	0	4
Other	1	0	0	0	0	0	0
Unknown	11	5	0	0	0	0	0
<b>Total</b>	<b>202</b>	<b>100</b>	<b>0</b>	<b>0</b>	<b>45</b>	<b>0</b>	<b>28</b>

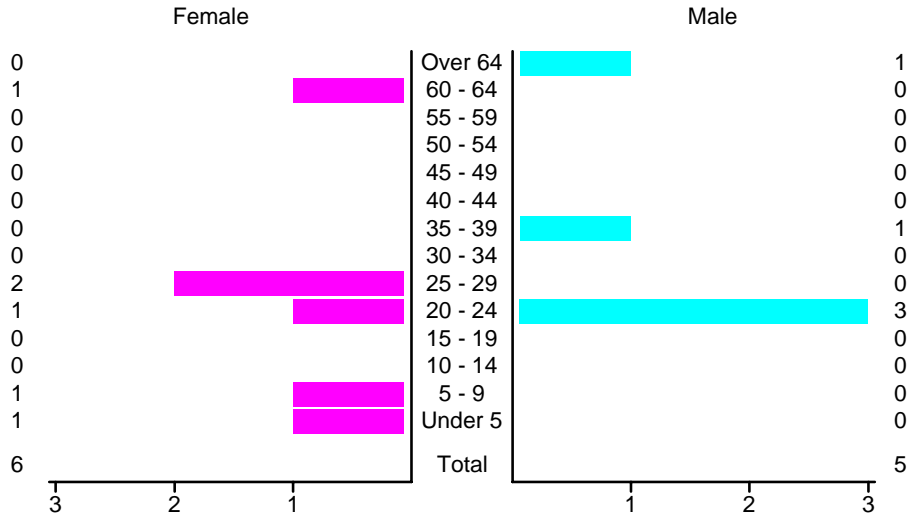
### Crashes in Truth or Consequences by Top Contributing Factor, 2004

Contributing Factor	Crashes					People	
	Total	% of Total	Fatal	% of Fatal	Injury	Killed	Injured
Alcohol involvement	8	7	0	0	5	0	6
Red light running	6	5	0	0	0	0	0
Failing to yield	22	19	0	0	5	0	5
Excessive speed	19	17	0	0	3	0	3
Driving left of center	3	3	0	0	1	0	1
Following too close	8	7	0	0	3	0	3
Improper turning	8	7	0	0	3	0	5
Improper overtaking	1	1	0	0	1	0	1
Improper backing	16	14	0	0	1	0	1
Driver inattention	18	16	0	0	3	0	3
Other	5	4	0	0	0	0	0
<b>Total</b>	<b>114</b>	<b>100</b>	<b>0</b>	<b>0</b>	<b>25</b>	<b>0</b>	<b>28</b>

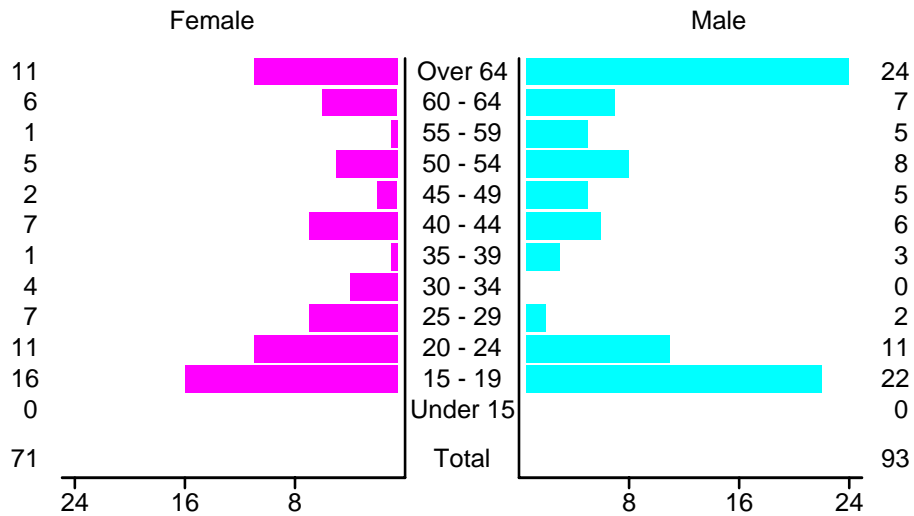
### People in Crashes by Age and Sex in Truth or Consequences, 2004



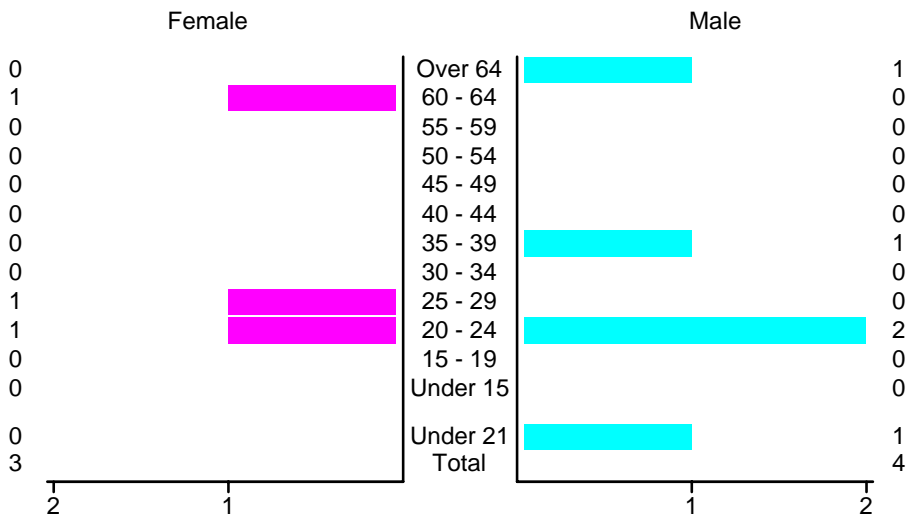
**People in Alcohol-Involved Crashes in Truth or Consequences, 2004  
by Age and Sex**



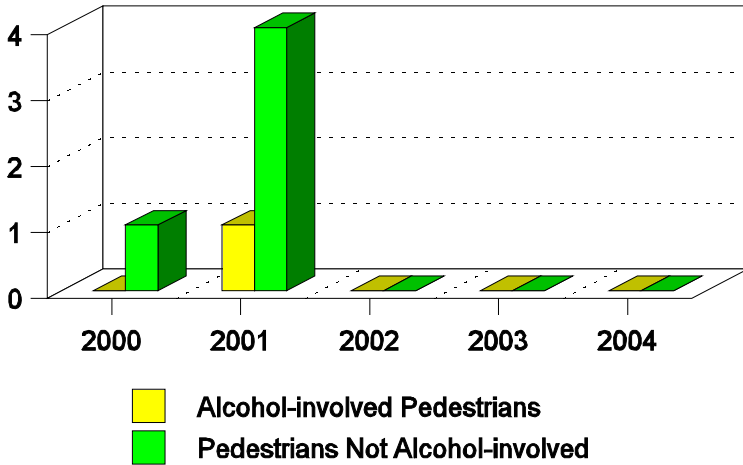
**Drivers in Crashes in Truth or Consequences, 2004  
by Age and Sex**



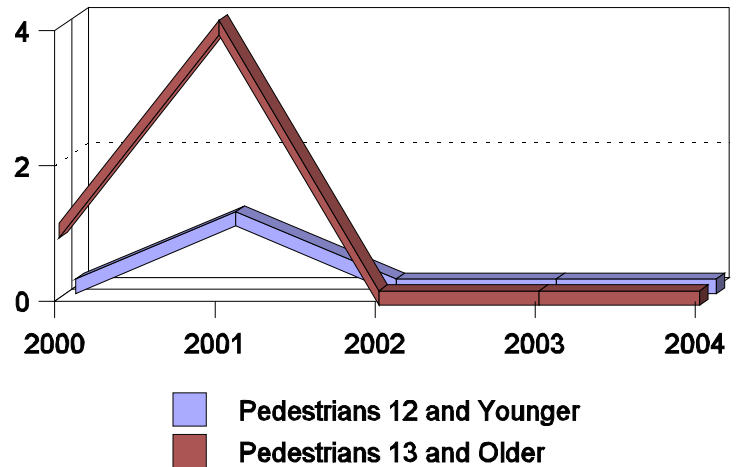
**Alcohol-Involved Drivers in Crashes in Truth or Consequences, 2004  
by Age and Sex**



**Pedestrian in Crashes in T or C  
by Pedestrian Alcohol-involvement, 2000-2004**



**Pedestrian in Crashes in T or C  
by Age Group, 2000-2004**



**'Teenagers' and Young Adults in Crashes in Truth or Consequences by Vehicle Type, 2004**

Vehicle	'Teenage' Drivers			Young Adult Drivers		
	Total	Fatal	Injury	Total	Fatal	Injury
Passenger car	21	0	3	13	0	6
Pickup	13	0	2	4	0	0
Semi	0	0	0	1	0	0
Van/4 WD	3	0	2	4	0	3
Unknown	1	0	0	0	0	0
<b>Total</b>	<b>38</b>	<b>0</b>	<b>7</b>	<b>22</b>	<b>0</b>	<b>9</b>

**'Teenagers' and Young Adults Killed and Injured in Crashes by Year in Truth or Consequences, 1995-2004**

Year	'Teenagers'				Young Adults			
	All Crashes		Alcohol Crashes		All Crashes		Alcohol Crashes	
	Killed	Injured	Killed	Injured	Killed	Injured	Killed	Injured
2004	0	6	0	0	0	5	0	3
2003	0	6	0	2	1	4	1	2
2002	0	6	0	1	1	7	1	0
2001	0	5	0	0	0	10	0	0
2000	0	9	0	1	0	6	0	1
1999	0	7	0	0	0	2	0	0
1998	0	8	0	0	0	5	0	0
1997	0	10	0	1	0	5	0	3
1996	0	9	0	1	0	8	0	1
1995	0	7	0	0	0	10	0	1