

Clovis Community Report, 2005

Demographics

In 2005, there were 27,783 licensed drivers in Clovis. Of these, there were 14,260 females and 13,523 males. The population of Clovis was 33,357. The total number of crashes in 2005 was 962, yielding a crash rate of 29 per thousand people (total number of crashes 962 divided by total population 33,357 times 1,000). The corresponding rate for the state was 25 per thousand people.

General Crash Information

Since 1996 the number of crashes has shown no consistent pattern. Fatal and injury crashes have also shown no consistent pattern since 1996. Belt usage (as a percentage) has increased from last year, while belt usage in crashes involving visible and incapacitating injuries has also increased. There were no fatalities in the seven intersections with the most crashes in 2005. Of these intersections, five involve Prince Street.

Alcohol-related Crash Information

Information about alcohol-involved crashes is included in all sections of this report. Of the 89 people convicted of DWI in Clovis, 75 percent were first-time DWI convictions (number of first convictions 67 divided by the total number of people convicted 89 times 100). The corresponding percent for the state is 61.

Crash Specifics

Crashes involving other vehicles were the most common class, accounting for 74 percent of all crashes. Crashes involving pedestrians, other vehicles, and a fixed object resulted in fatalities. Passenger cars were the vehicle type most often involved in crashes, accounting for 48 percent of all vehicles in crashes. Pickups accounted for 26 percent of vehicles involved in crashes. Together these two vehicle types comprised 70 percent of the vehicles involved in injury crashes. The three most common top contributing factors were failing to yield, following too close, and driver inattention. There were three fatal crashes in 2005. The most common top contributing factor for the fatal crashes was red light running.

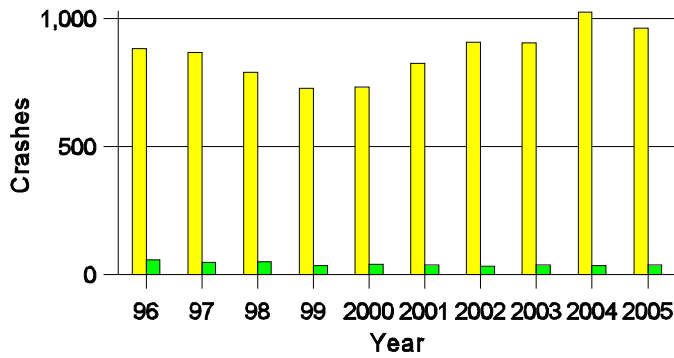
People in Crashes

Overall, males were 53 percent of drivers in crashes, although they account for only 49 percent of licensed drivers in Clovis. The number of pedestrians in crashes increased from last year. In 2005, one 'teenager' and no young adults were killed in crashes in Clovis. Statewide 17 percent of alcohol-involved drivers were under 21; in Clovis 21 percent were under 21.

Note: The 1999 crash file contains 15% fewer crashes than the 1998 file. This may be due to problems implementing the new system after the old system failed, or to under reporting. Care should be used in interpreting differences between 1999 and other years in this report.

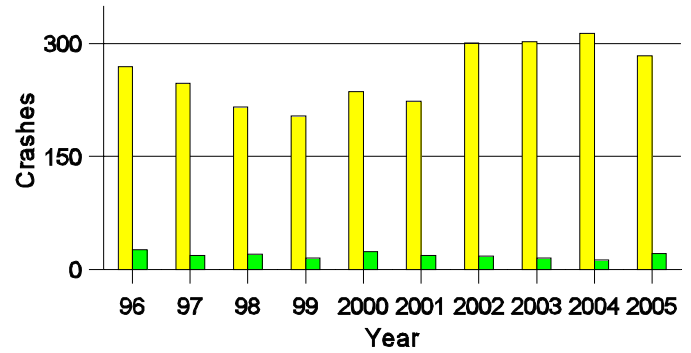
- Location of arrest/conviction was determined by police agency/court location, not driver residence.
- Crashes and drivers were counted by the city of occurrence/residence.
- Population was counted according to the Census definition.
The city population data is from the most current 2005 estimates.
- Young adults are people between the ages of 20 and 24.
- 'Teenagers' are people between the ages of 15 and 19.
- Tables only include variable values for which there are data.

Crashes in Clovis by Alcohol Involvement



■ All Crashes
■ Alcohol-involved Crashes

Fatal and Injury Crashes in Clovis by Alcohol Involvement



■ All Fatal and Injury Crashes
■ Alcohol-involved Fatal and Injury Crashes

Passenger Vehicle Seatbelt Usage and Injuries in Clovis, 2003-2005

Injury Level	2005		2004		2003	
	Total	No Belt	Total	No Belt	Total	No Belt
Killed	3	0	0	0	0	0
Incapacitating injury	22	0	28	4	25	4
Visible injury	59	4	66	11	70	12
Complaint of injury	213	4	348	11	283	9
Unhurt	1,970	13	2,224	20	1,979	31
Total	2,267	21	2,666	46	2,357	56

The Seven Intersections in Clovis with the Most Crashes, 2005

Intersection	Crashes			People	
	Total	Fatal	Injury	Killed	Injured
1st St @ Prince St	18	0	6	0	6
21st St @ Main St	14	0	4	0	7
21st St @ Prince St	34	0	8	0	9
21st St @ Thornton St	14	0	5	0	6
7th St @ Prince St	12	0	2	0	3
Commerce Way @ Prince St	14	0	3	0	4
Llano Estacado Blvd @ Prince St	34	0	13	0	14

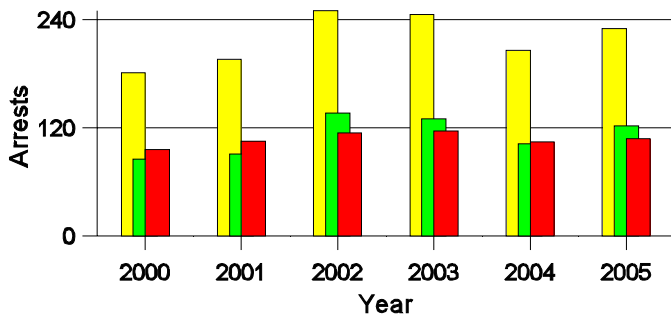
**Lifetime DWI Convictions for Drivers
Convicted of DWI Violations in Clovis, 2005**

Convictions	Since 2000	Since 1981
1st	70	67
2nd	17	17
3rd	2	3
4th	0	0
5th	0	2
6th	0	0
7th	0	0
8th	0	0
9th	0	0
10 or more	0	0
Total	89	89

Convictions are counts of people convicted of DWI by 7/2006 for violations in 2005 in Clovis.
Convictions are not comparable to arrests.

DWI Arrests in Clovis

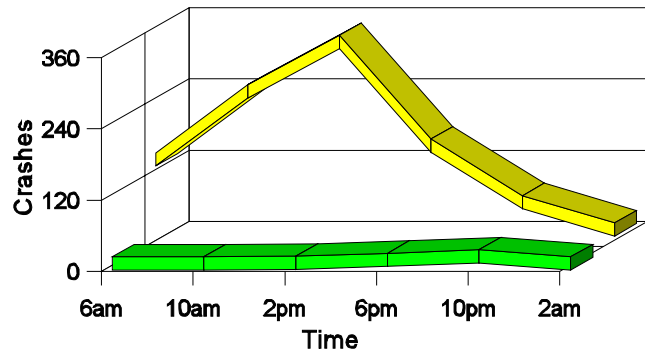
Showing First Arrests and Repeat Offenders



■ Total DWI Arrests
■ First DWI Arrests
■ Repeat DWI Arrests

Crashes in Clovis

by Hour and Alcohol Involvement



■ All Crashes
■ Alcohol-involved Crashes

Crashes in Clovis by Class, 2005

Class	Crashes				People		
	Total	% of Total	Fatal	% of Fatal	Injury	Killed	Injured
Other vehicle	711	74	2	33	224	2	314
Pedestrian	11	1	3	50	7	3	7
Fixed object	79	8	1	17	16	1	18
Parked vehicle	134	14	0	0	13	0	15
Overturn	6	1	0	0	4	0	5
Other non-collision	6	1	0	0	4	0	5
Pedalcyclist	10	1	0	0	9	0	10
Animal	4	0	0	0	1	0	1
Other object	1	0	0	0	0	0	0
Total	962	100	6	100	278	6	375

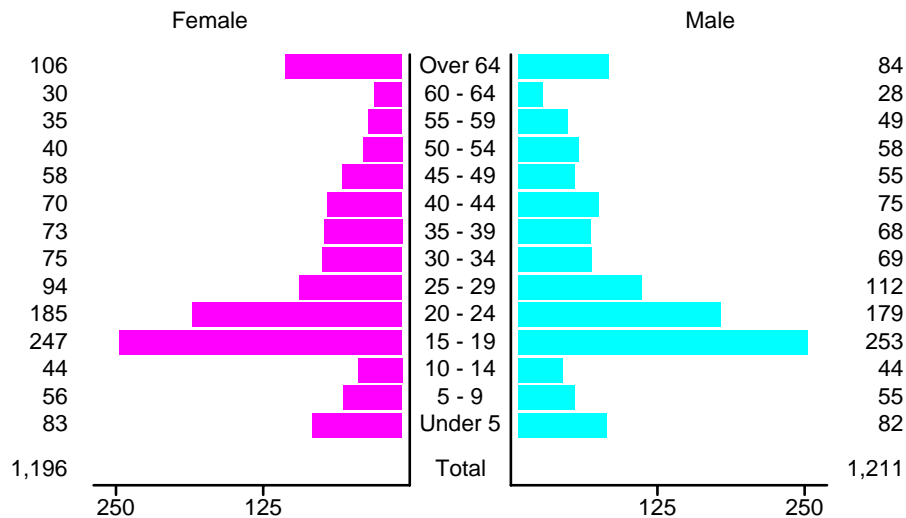
Crashes in Clovis by Vehicle Type, 2005

Vehicle Type	Vehicles					People	
	Total	% of Total	Fatal	% of Fatal	Injury	Killed	Injured
Passenger car	901	48	5	45	262	3	203
Pickup	480	26	1	9	127	0	65
Semi	23	1	1	9	6	0	0
Bus	2	0	0	0	0	0	0
Motorcycle	33	2	0	0	30	0	30
Pedalcyclist	12	1	0	0	11	0	12
Pedestrian	11	1	3	27	7	3	7
Van/4 WD	281	15	1	9	81	0	40
Other	3	0	0	0	0	0	0
Unknown	128	7	0	0	29	0	18
Total	1,874	100	11	100	553	6	375

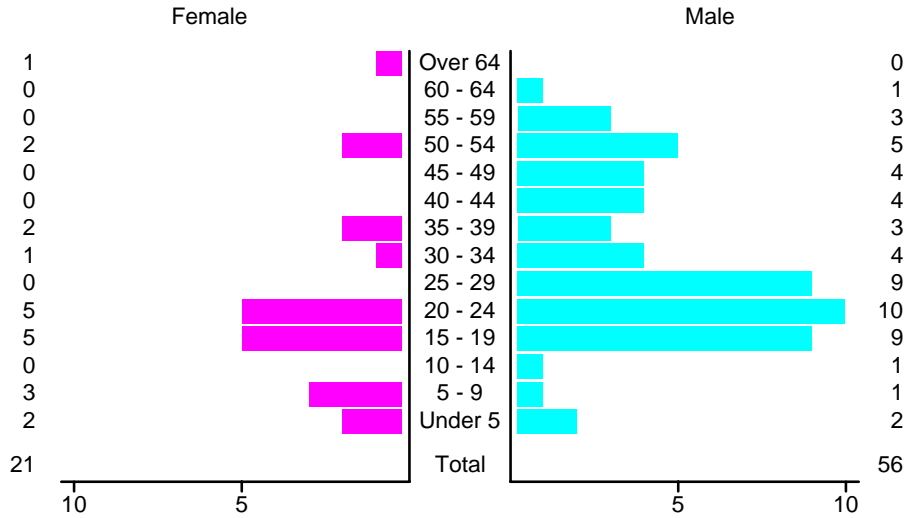
Crashes in Clovis by Top Contributing Factor, 2005

Contributing Factor	Crashes					People	
	Total	% of Total	Fatal	% of Fatal	Injury	Killed	Injured
Alcohol involvement	39	4	1	17	21	1	24
Red light running	104	11	2	33	42	2	63
Failing to yield	204	21	0	0	78	0	110
Excessive speed	47	5	0	0	8	0	11
Driving left of center	17	2	0	0	6	0	7
Following too close	172	18	0	0	50	0	72
Improper turning	37	4	0	0	6	0	7
Improper overtaking	10	1	0	0	2	0	3
Improper backing	88	9	0	0	1	0	1
Inop. traffic control	3	0	0	0	0	0	0
Mechanical defect	10	1	0	0	5	0	5
Driver inattention	158	16	0	0	44	0	54
Improper driving	1	0	0	0	1	0	2
Other	72	7	3	50	14	3	16
Total	962	100	6	100	278	6	375

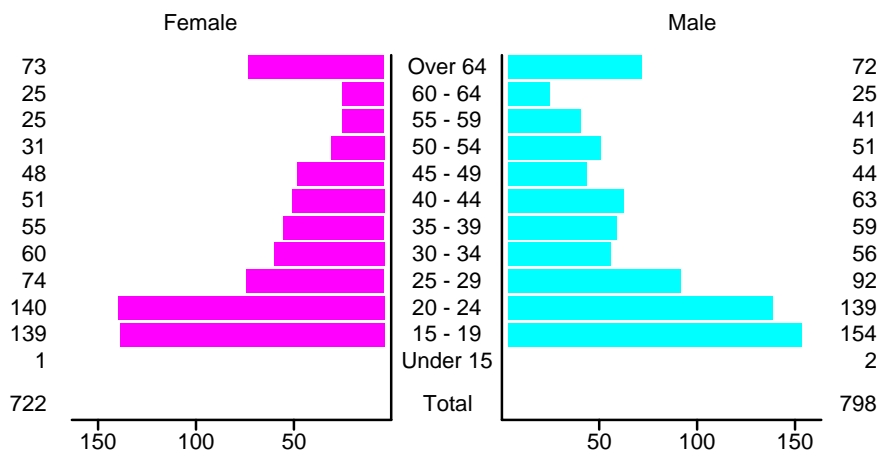
People in Crashes by Age and Sex in Clovis, 2005



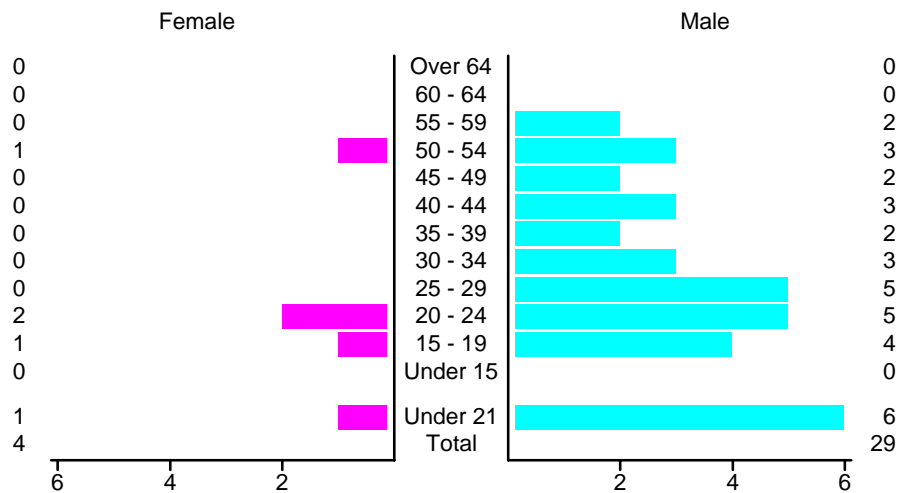
People in Alcohol-Involved Crashes in Clovis, 2005 by Age and Sex



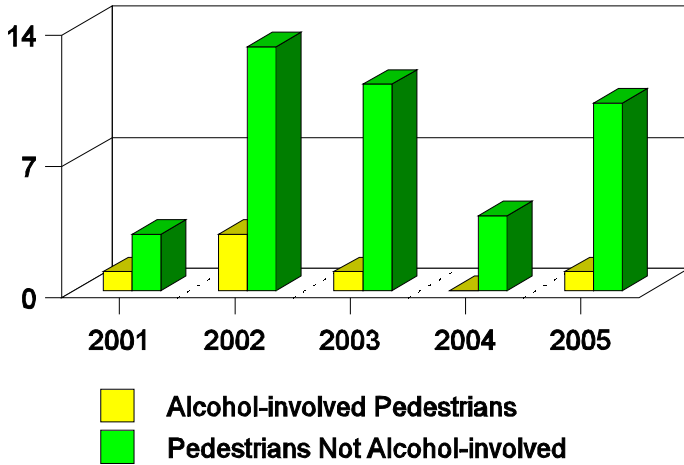
Drivers in Crashes by Age and Sex in Clovis, 2005



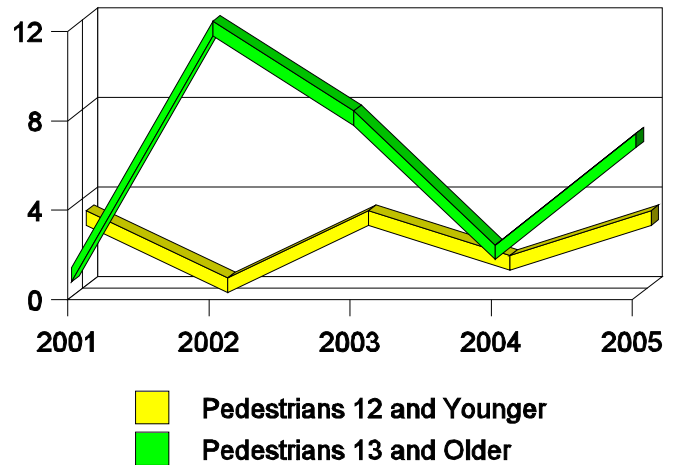
Alcohol-Involved Drivers in Crashes in Clovis, 2005 by Age and Sex



**Pedestrian in Crashes in Clovis
by Pedestrian Alcohol Involvement**



**Pedestrian in Crashes in Clovis
by Age Group**



'Teenagers' and Young Adults in Crashes in Clovis by Vehicle Type, 2005

Vehicle	'Teenage' Drivers			Young Adult Drivers		
	Total	Fatal	Injury	Total	Fatal	Injury
Passenger car	184	1	53	164	0	59
Pickup	70	0	23	66	0	13
Semi	0	0	0	2	0	0
Motorcycle	2	0	2	9	0	9
Pedalcyclist	1	0	1	0	0	0
Pedestrian	1	0	1	0	0	0
Van/4 WD	30	0	6	25	0	10
Unknown	7	0	5	14	0	5
Total	295	1	91	280	0	96

'Teenagers' and Young Adults Killed and Injured in Crashes by Year in Clovis, 1996-2005

Year	'Teenagers'				Young Adults			
	All Crashes		Alcohol Crashes		All Crashes		Alcohol Crashes	
	Killed	Injured	Killed	Injured	Killed	Injured	Killed	Injured
2005	1	73	0	5	0	58	0	5
2004	0	98	0	8	0	63	0	3
2003	0	89	0	3	0	57	0	2
2002	1	78	1	0	0	57	0	6
2001	0	78	0	9	0	42	0	4
2000	0	78	0	7	0	48	0	3
1999	0	65	0	4	0	36	0	6
1998	0	70	0	9	0	46	0	8
1997	0	82	0	4	0	54	0	8
1996	0	76	0	6	0	61	0	7