

Roosevelt County Report, 2005

Demographics

In 2005, there were 11,992 licensed drivers in Roosevelt County. Of these, there were 6,074 females and 5,918 males. The population in Roosevelt County was 18,238. The total number of crashes in 2005 was 393, yielding a crash rate of 22 per thousand people (the total number of crashes 393 divided by the population 18,238 multiplied by 1,000). The corresponding rate for the state was 25 per thousand people.

General Crash Information

Since 1996 the number of crashes has shown no consistent pattern. Fatal and injury crashes have also shown no consistent pattern since 1996. Belt usage (as a percentage) has increased from last year, while belt usage in crashes involving visible and incapacitating injuries has also increased.

Alcohol-related Crash Information

Information about alcohol-involved crashes is included in all sections of this report. Of the 83 people convicted of DWI in Roosevelt County in 2005, 65 percent were first-time DWI convictions (number of first convictions 54 divided by the total number of people convicted 83 multiplied by 100). The corresponding percentage for the state was 61.

Crash Specifics

Crashes involving other vehicles were the most common class, accounting for 62 percent of all crashes. Crashes involving overturns resulted in fatalities. Passenger cars were the vehicle type most often involved in crashes, accounting for 40 percent of all vehicles in crashes. Pickups also accounted for 32 percent of vehicles involved in crashes. Together these two vehicle types comprised 70 percent of the vehicles involved in injury crashes. The three most common top contributing factors were failing to yield, driver inattention, and following too close. There were two fatal crashes in 2005. The top contributing factor for the fatal crashes was driving left of center.

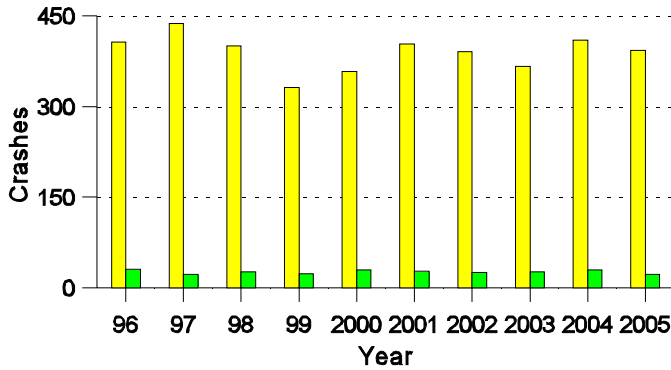
People in Crashes

Overall, males were 56 percent of drivers in crashes, although they account for only 49 percent of licensed drivers in Roosevelt County. There were no pedestrians involved in crashes. In 2005, one 'teenager' and no young adults were killed in crashes in Roosevelt County. Statewide 17 percent of alcohol-involved drivers were under 21; in Roosevelt County 18 percent were under 21.

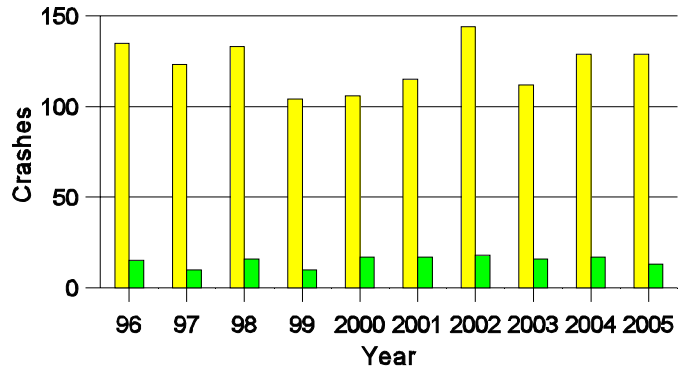
Note: The 1999 crash file contains 15% fewer crashes than the 1998 file. This may be due to problems implementing the new system after the old system failed, or to under reporting. Care should be used in interpreting differences between 1999 and other years in this report.

- Location of arrest/conviction was determined by police agency/court location, not driver residence.
- Crashes and drivers were counted by the city of occurrence/residence.
- Population was counted according to the Census definition, using 2005 estimates.
- Young adults are people between the ages of 20 and 24.
'Teenagers' are people between the ages of 15 and 19.
- Tables only include variable values for which there are data.

Crashes in Roosevelt County by Alcohol Involvement



Fatal and Injury Crashes in Roosevelt County by Alcohol Involvement



All Crashes
 Alcohol-involved Crashes

All Fatal and Injury Crashes
 Alcohol-involved Fatal and Injury Crashes

Passenger Vehicle Seatbelt Usage and Injuries in Roosevelt County, 2003-2005

Injury Level	2005		2004		2003	
	Total	No Belt	Total	No Belt	Total	No Belt
Killed	2	1	5	4	1	1
Incapacitating injury	30	3	27	6	24	7
Visible injury	43	11	37	9	50	8
Complaint of injury	89	2	101	6	72	4
Unhurt	628	5	688	20	553	13
Total	792	22	858	45	700	33

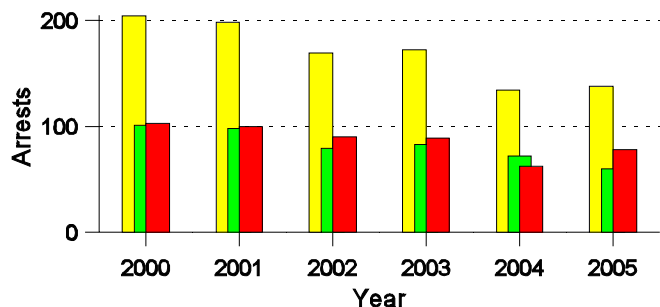
**Lifetime DWI Convictions for Drivers
Convicted of DWI Violations in Roosevelt County, 2005**

Convictions	Since 2000	Since 1981
1st	66	54
2nd	14	20
3rd	3	8
4th	0	1
5th	0	0
6th	0	0
7th	0	0
8th	0	0
9th	0	0
10 or more	0	0
Total	83	83

Convictions are counts of people convicted of DWI by 7/2006 for violations in 2005 in Roosevelt County
 Convictions are not comparable to arrests.

DWI Arrests in Roosevelt County

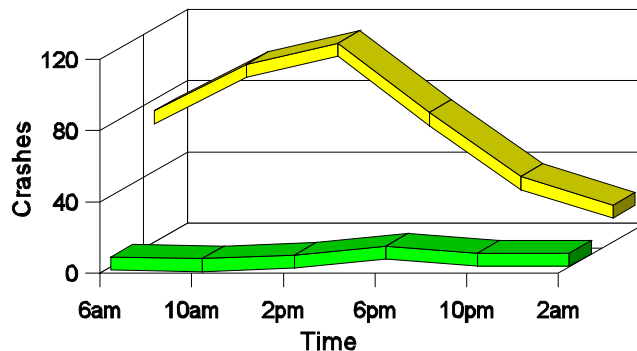
Showing First Arrests and Repeat Offenders



- Total DWI Arrests
- First DWI Arrests
- Repeat DWI Arrests

Crashes in Roosevelt County

by Hour and Alcohol Involvement



- All Crashes
- Alcohol-involved Crashes

Crashes in Roosevelt County by Class, 2005

Class	Crashes					People	
	Total	% of Total	Fatal	% of Fatal	Injury	Killed	Injured
Other vehicle	243	62	0	0	76	0	121
Fixed object	36	9	0	0	9	0	13
Parked vehicle	41	10	0	0	6	0	7
Overturn	34	9	2	100	24	2	40
Other non-collision	8	2	0	0	2	0	3
Pedalcyclist	3	1	0	0	2	0	2
Animal	27	7	0	0	8	0	10
Other object	1	0	0	0	0	0	0
Total	393	100	2	100	127	2	196

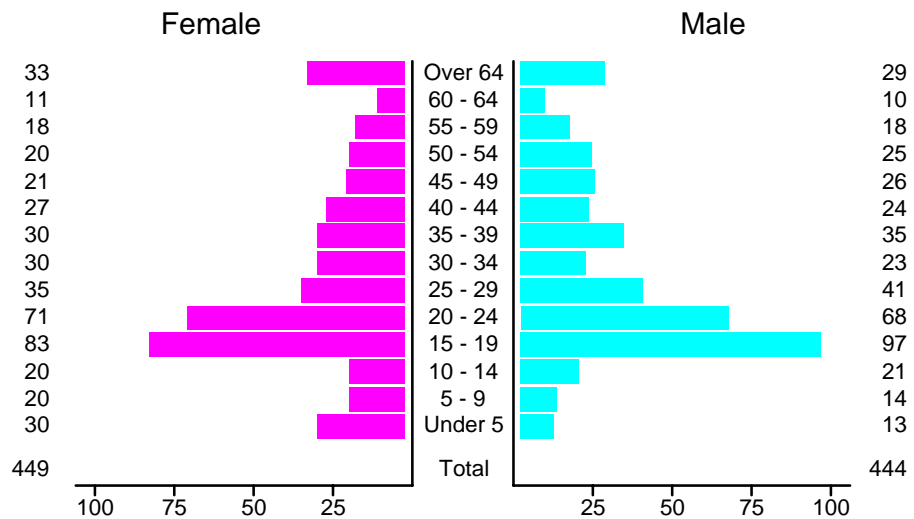
Crashes in Roosevelt County by Vehicle Type, 2005

Vehicle Type	Vehicles					People	
	Total	% of Total	Fatal	% of Fatal	Injury	Killed	Injured
Passenger car	276	40	1	50	89	1	93
Pickup	222	32	0	0	61	0	45
Semi	31	5	0	0	9	0	5
Motorcycle	7	1	0	0	6	0	7
Pedalcyclist	3	0	0	0	2	0	2
Van/4 WD	94	14	1	50	32	1	33
Other	11	2	0	0	5	0	2
Unknown	42	6	0	0	10	0	9
Total	686	100	2	100	214	2	196

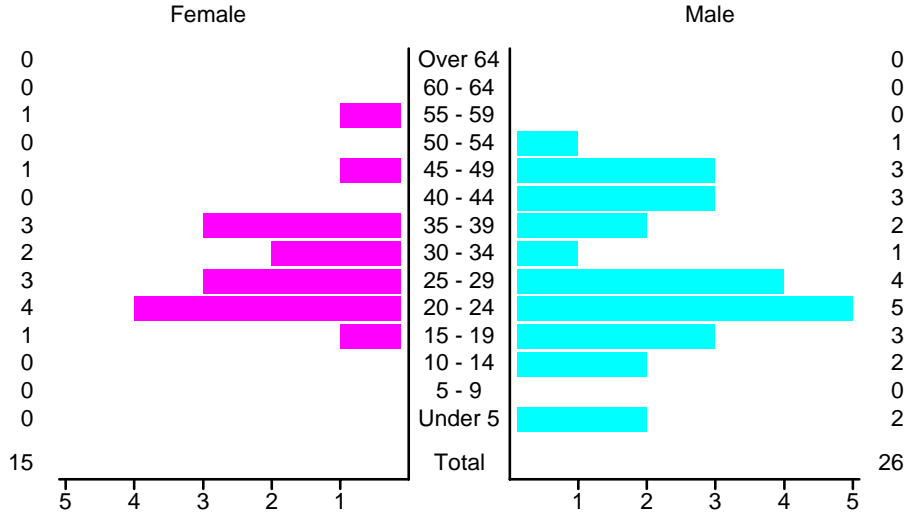
Crashes in Roosevelt County by Top Contributing Factor, 2005

Contributing Factor	Crashes				People		
	Total	% of Total	Fatal	% of Fatal	Injury	Killed	Injured
Alcohol involvement	23	6	0	0	13	0	19
Red light running	23	6	0	0	11	0	15
Failing to yield	77	20	0	0	20	0	27
Excessive speed	40	10	0	0	20	0	32
Driving left of center	11	3	2	100	5	2	9
Following too close	46	12	0	0	15	0	20
Improper turning	26	7	0	0	12	0	19
Improper overtaking	5	1	0	0	5	0	12
Improper backing	19	5	0	0	1	0	1
Inop. traffic control	1	0	0	0	0	0	0
Mechanical defect	10	3	0	0	3	0	8
Driver inattention	64	16	0	0	14	0	24
Other	48	12	0	0	8	0	10
Total	393	100	2	100	127	2	196

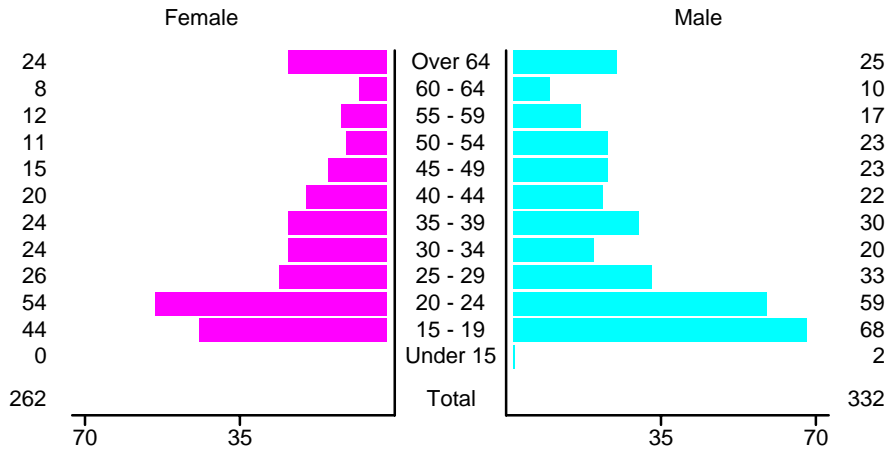
People in Crashes by Age and Sex in Roosevelt County, 2005



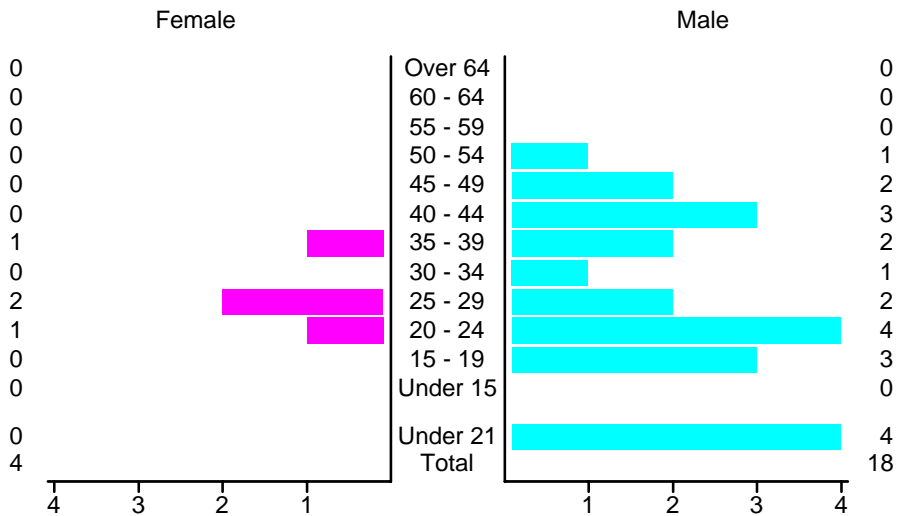
People in Alcohol-Involved Crashes in Roosevelt County, 2005 by Age and Sex



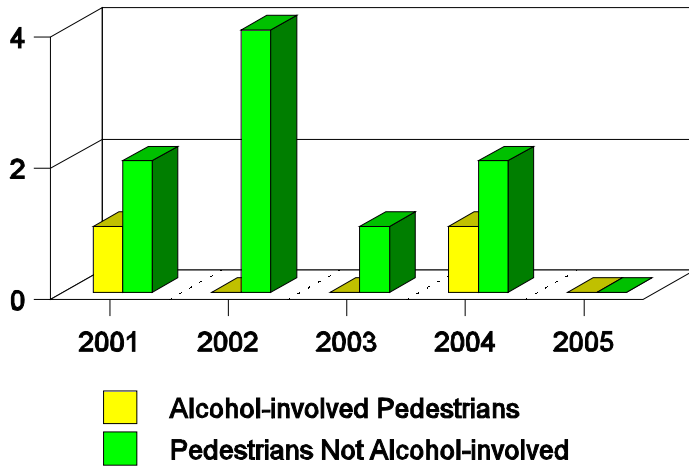
Drivers in Crashes by Age and Sex in Roosevelt County, 2005



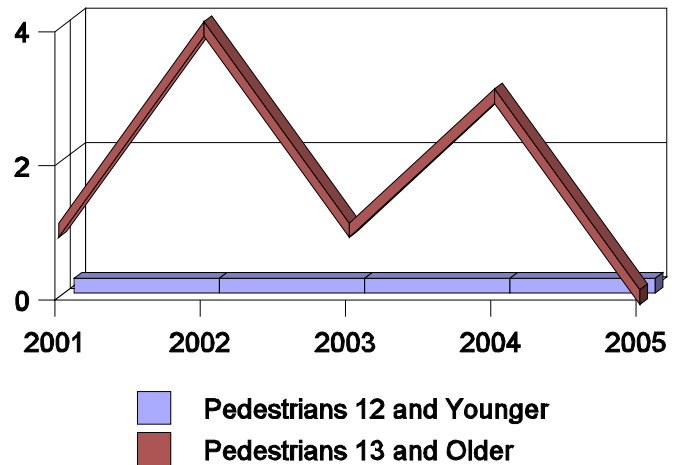
Alcohol-Involved Drivers in Crashes in Roosevelt County, 2005 by Age and Sex



**Pedestrian Crashes in Roosevelt County
by Pedestrian Alcohol Involvement**



**Pedestrian Crashes in Roosevelt County
by Age Group**



'Teenagers' and Young Adults in Crashes in Roosevelt County by Vehicle Type, 2005

Vehicle	'Teenage' Drivers			Young Adult Drivers		
	Total	Fatal	Injury	Total	Fatal	Injury
Passenger car	55	1	20	70	0	19
Pickup	33	0	13	29	0	7
Semi	0	0	0	1	0	0
Motorcycle	0	0	0	1	0	1
Van/4 WD	14	0	4	8	0	2
Other	1	0	0	0	0	0
Unknown	9	0	4	4	0	1
Total	112	1	41	113	0	30

'Teenagers' and Young Adults in Crashes in Roosevelt County, 1996-2005

Year	'Teenagers'				Young Adults			
	All Crashes		Alcohol Crashes		All Crashes		Alcohol Crashes	
	Killed	Injured	Killed	Injured	Killed	Injured	Killed	Injured
2005	1	44	0	2	0	23	0	3
2004	4	54	4	8	0	25	0	5
2003	0	47	0	4	0	27	0	4
2002	0	59	0	8	2	37	1	8
2001	0	35	0	2	2	26	1	5
2000	2	40	1	7	0	31	0	2
1999	0	39	0	5	1	24	1	3
1998	1	51	0	7	0	27	0	7
1997	1	47	1	6	0	26	0	3
1996	0	54	0	9	1	30	1	3