

# Artesia Community Report, 2005

## Demographics

In 2005, there were 11,228 licensed drivers in Artesia. Of these, there were 5,638 females and 5,590 males. The population of Artesia was 10,481. The total number of crashes in 2005 was 251, yielding a crash rate of 24 per thousand people (total number of crashes 251 divided by total population 10,481 times 1,000). The corresponding rate for the state was 25 per thousand people.

## General Crash Information

Since 1996 the number of crashes has shown no consistent pattern. Fatal and injury crashes have also shown no consistent pattern since 1996. Belt usage (as a percentage) has increased from last year, while belt usage in crashes involving visible and incapacitating injuries has also increased. There were no fatalities in the seven intersections with the most crashes in 2005. Of these intersections, five involve Main Street.

## Alcohol-related Crash Information

Information about alcohol-involved crashes is included in all sections of this report. Of the 34 people convicted of DWI in Artesia, 56 percent were first-time DWI convictions (number of first convictions 19 divided by the total number of people convicted 34 times 100). The corresponding percent for the state is 61.

## Crash Specifics

Crashes involving other vehicles were the most common class, accounting for 64 percent of all crashes. Passenger cars were the vehicle type most often involved in crashes, accounting for 46 percent of all vehicles in crashes. Pickups accounted for 29 percent of vehicles involved in crashes. Together these two vehicle types comprised 72 percent of the vehicles involved in injury crashes. The three most common top contributing factors were driver inattention, red light running, and failing to yield. There were no fatal crashes in 2005.

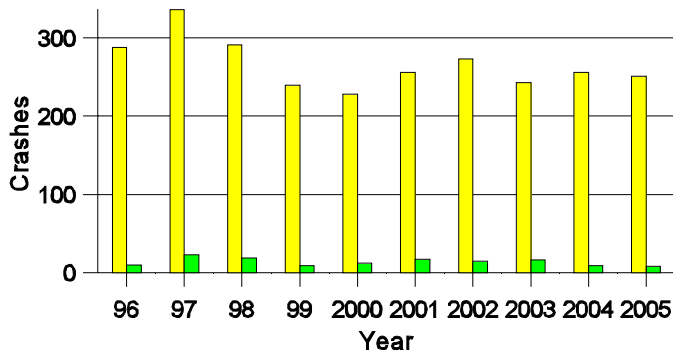
## People in Crashes

Overall, males were 53 percent of drivers in crashes although they account for only 50 percent of licensed drivers. Two pedestrians were involved in crashes in 2005. In 2005, no 'teenagers' or young adults were killed in crashes in Artesia. Statewide 17 percent of alcohol-involved drivers were under 21; in Artesia 25 percent (2 of 8) were under 21.

**Note:** The 1999 crash file contains 15% fewer crashes than the 1998 file. This may be due to problems implementing the new system after the old system failed, or to under reporting. Care should be used in interpreting differences between 1999 and other years in this report.

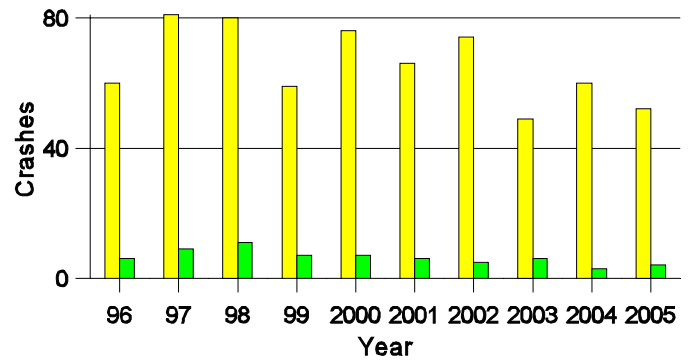
- Location of arrest/conviction was determined by police agency/court location, not driver residence.
- Crashes and drivers were counted by the city of occurrence/residence.
- Population was counted according to the Census definition.  
The city population data is from the most current 2005 estimates.
- Young adults are people between the ages of 20 and 24.
- 'Teenagers' are people between the ages of 15 and 19.
- Tables only include variable values for which there are data.

### Crashes in Artesia by Alcohol Involvement



■ All Crashes  
■ Alcohol-involved Crashes

### Fatal and Injury Crashes in Artesia by Alcohol Involvement



■ All Fatal and Injury Crashes  
■ Alcohol-involved Fatal and Injury Crashes

### Passenger Vehicle Seatbelt Usage and Injuries in Artesia, 2003-2005

Injury Level	2005		2004		2003	
	Total	No Belt	Total	No Belt	Total	No Belt
Killed	0	0	1	0	0	0
Incapacitating injury	6	0	2	2	7	0
Visible injury	9	2	14	1	10	2
Complaint of injury	42	2	52	1	43	1
Unhurt	403	6	350	10	464	9
<b>Total</b>	<b>460</b>	<b>10</b>	<b>419</b>	<b>14</b>	<b>524</b>	<b>12</b>

### The Seven Intersections in Artesia with the Most Crashes, 2005

Intersection	Crashes			People	
	Total	Fatal	Injury	Killed	Injured
13th St @ Grand Ave	7	0	0	0	0
13th St @ Main St	9	0	3	0	3
16th St @ Main St	4	0	1	0	1
1st St @ Main St	4	0	1	0	1
1st St @ Richey Ave	11	0	3	0	3
4th St @ Main St	4	0	1	0	4
7th St @ Main St	4	0	1	0	1

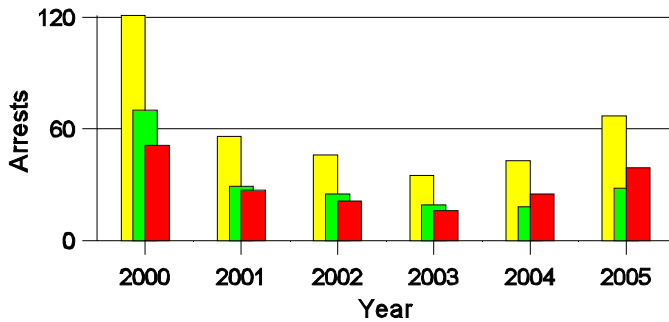
**Lifetime DWI Convictions for Drivers  
Convicted of DWI Violations in Artesia, 2005**

Convictions	Since 2000	Since 1981
1st	28	19
2nd	6	9
3rd	0	5
4th	0	1
5th	0	0
6th	0	0
7th	0	0
8th	0	0
9th	0	0
10 or more	0	0
<b>Total</b>	<b>34</b>	<b>34</b>

Convictions are counts of people convicted of DWI by 7/2006 for violations in 2005 in Artesia.  
Convictions are not comparable to arrests.

**DWI Arrests in Artesia**

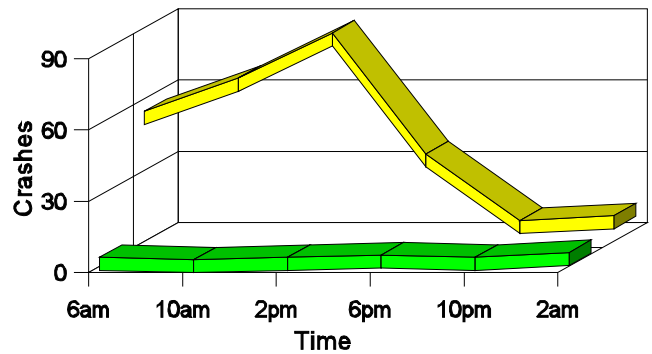
Showing First Arrests and Repeat Offenders



■ Total DWI Arrests  
■ First DWI Arrests  
■ Repeat DWI Arrests

**Crashes in Artesia**

by Hour and Alcohol Involvement



■ All Crashes  
■ Alcohol-involved Crashes

**Crashes in Artesia by Class, 2005**

Class	Crashes					People	
	Total	% of Total	Fatal	% of Fatal	Injury	Killed	Injured
Other vehicle	161	64	0	0	38	0	55
Pedestrian	2	1	0	0	2	0	2
Fixed object	25	10	0	0	5	0	6
Parked vehicle	52	21	0	0	2	0	2
Overturn	4	2	0	0	4	0	5
Other non-collision	2	1	0	0	0	0	0
Pedalcyclist	2	1	0	0	1	0	1
Animal	3	1	0	0	0	0	0
<b>Total</b>	<b>251</b>	<b>100</b>	<b>0</b>	<b>0</b>	<b>52</b>	<b>0</b>	<b>71</b>

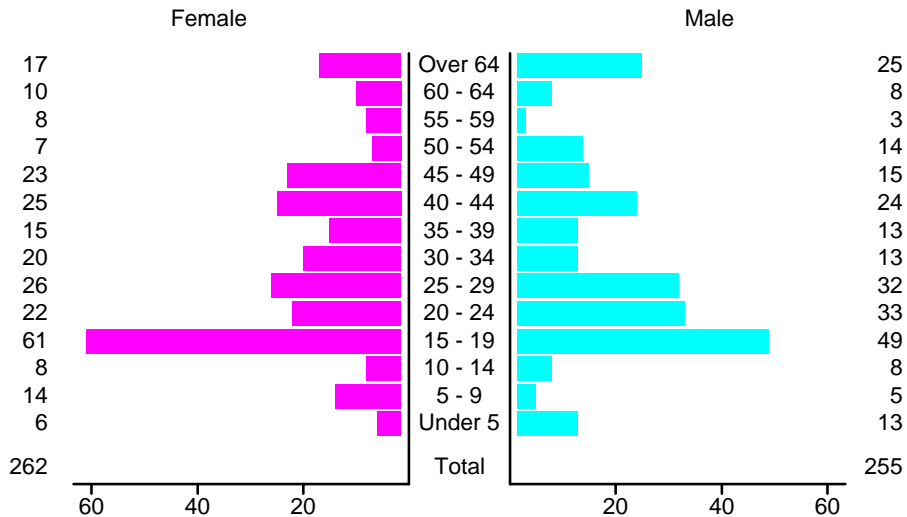
### Crashes in Artesia by Vehicle Type, 2005

Vehicle Type	Vehicles					People	
	Total	% of Total	Fatal	% of Fatal	Injury	Killed	Injured
Passenger car	217	46	0	0	47	0	39
Pickup	139	29	0	0	23	0	13
Semi	12	3	0	0	1	0	0
Motorcycle	1	0	0	0	1	0	1
Pedalcyclist	2	0	0	0	1	0	1
Pedestrian	2	0	0	0	2	0	2
Van/4 WD	55	12	0	0	18	0	14
Other	1	0	0	0	0	0	0
Unknown	45	9	0	0	4	0	1
<b>Total</b>	<b>474</b>	<b>100</b>	<b>0</b>	<b>0</b>	<b>97</b>	<b>0</b>	<b>71</b>

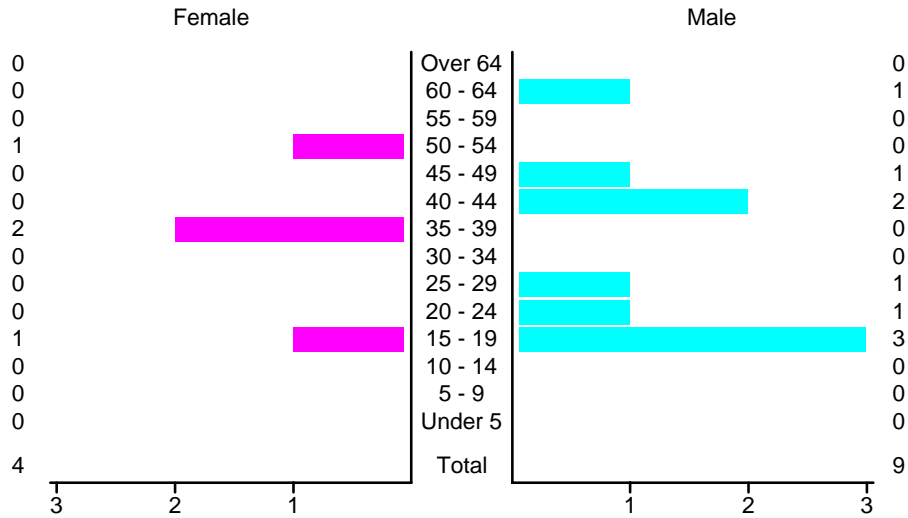
### Crashes in Artesia by Top Contributing Factor, 2005

Contributing Factor	Crashes					People	
	Total	% of Total	Fatal	% of Fatal	Injury	Killed	Injured
Alcohol involvement	9	4	0	0	4	0	4
Red light running	35	14	0	0	12	0	17
Failing to yield	34	14	0	0	9	0	18
Excessive speed	18	7	0	0	3	0	4
Driving left of center	3	1	0	0	2	0	2
Following too close	30	12	0	0	3	0	4
Improper turning	17	7	0	0	3	0	3
Improper overtaking	3	1	0	0	0	0	0
Improper backing	24	10	0	0	2	0	2
Mechanical defect	3	1	0	0	0	0	0
Driver inattention	56	22	0	0	12	0	14
Other	19	8	0	0	2	0	3
<b>Total</b>	<b>251</b>	<b>100</b>	<b>0</b>	<b>0</b>	<b>52</b>	<b>0</b>	<b>71</b>

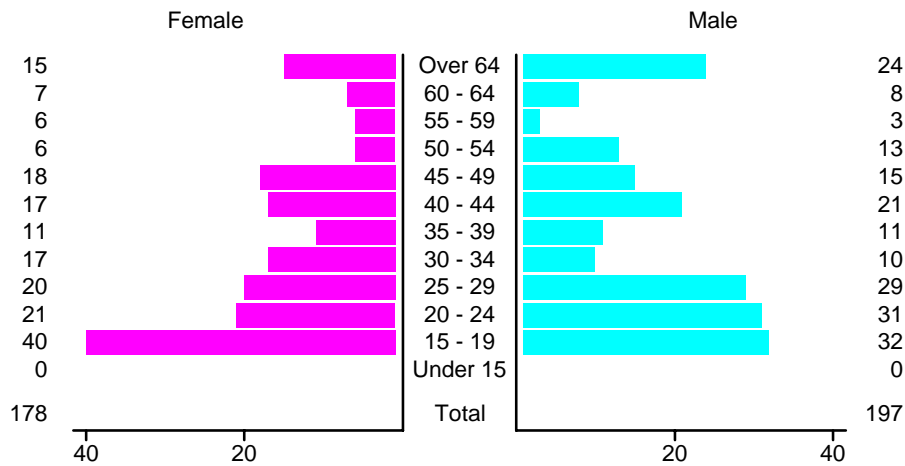
### People in Crashes by Age and Sex in Artesia, 2005



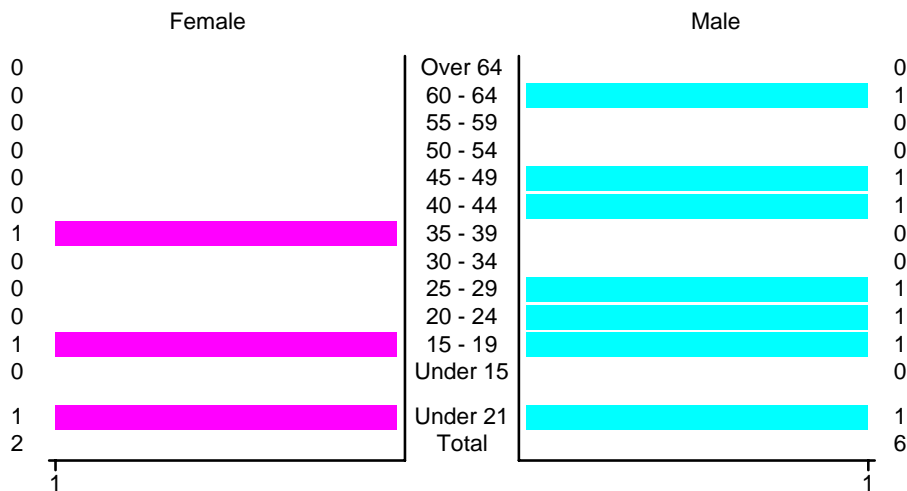
### People in Alcohol-Involved Crashes in Artesia, 2005 by Age and Sex



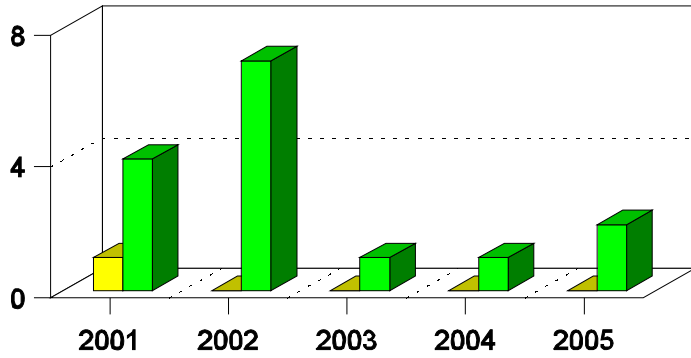
### Drivers in Crashes by Age and Sex in Artesia, 2005



### Alcohol-Involved Drivers in Crashes in Artesia, 2005 by Age and Sex

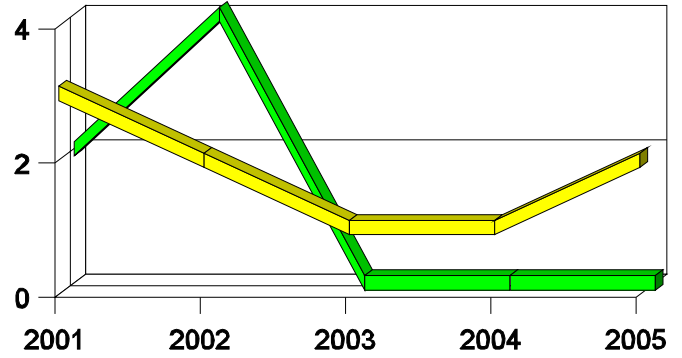


**Pedestrian in Crashes in Artesia  
by Pedestrian Alcohol Involvement**



Alcohol-involved Pedestrians  
 Pedestrians Not Alcohol-involved

**Pedestrian in Crashes in Artesia  
by Age Group**



Pedestrians 12 and Younger  
 Pedestrians 13 and Older

**'Teenagers' and Young Adults in Crashes in Artesia by Vehicle Type, 2005**

Vehicle	'Teenage' Drivers			Young Adult Drivers		
	Total	Fatal	Injury	Total	Fatal	Injury
Passenger car	49	0	14	26	0	5
Pickup	19	0	3	14	0	2
Semi	0	0	0	2	0	1
Motorcycle	0	0	0	1	0	1
Pedestrian	1	0	1	0	0	0
Van/4 WD	3	0	0	7	0	1
Unknown	2	0	0	2	0	0
Total	74	0	18	52	0	10
Total	118	0	35	45	1	17

**'Teenagers' and Young Adults Killed and Injured in Crashes by Year in Artesia, 1996-2005**

Year	'Teenagers'				Young Adults			
	All Crashes		Alcohol Crashes		All Crashes		Alcohol Crashes	
	Killed	Injured	Killed	Injured	Killed	Injured	Killed	Injured
2005	0	12	0	1	0	7	0	0
2004	0	29	0	1	0	10	0	1
2003	0	13	0	3	0	7	0	2
2002	0	31	0	2	0	12	0	1
2001	0	32	0	3	0	4	0	0
2000	0	24	0	0	0	11	0	3
1999	0	17	0	2	0	8	0	1
1998	0	32	0	4	0	6	0	3
1997	0	28	0	3	0	9	0	3
1996	1	19	0	7	0	6	0	0