

De Baca County Report, 2005

Demographics

In 2005, there were 1,693 licensed drivers in De Baca County. Of these, there were 845 females and 848 males. The population in De Baca County was 2,016. The total number of crashes in 2005 was 34, yielding a crash rate of 17 per thousand people (the total number of crashes 34 divided by the population 2,016 multiplied by 1,000). The corresponding rate for the state was 25 per thousand people.

General Crash Information

Since 2002 the number of crashes has shown a downward trend. Fatal and injury crashes have shown no consistent pattern since 1996. Belt usage (as a percentage) has decreased from last year, while belt usage in crashes involving visible and incapacitating injuries has also decreased.

Alcohol-related Crash Information

Information about alcohol-involved crashes is included in all sections of this report. Of the five people convicted of DWI in De Baca County in 2005, 60 percent were first-time DWI convictions (number of first convictions three divided by the total number of people convicted five multiplied by 100). The corresponding percentage for the state was 61.

Crash Specifics

Crashes involving overturns were the most common class, accounting for 35 percent of all crashes. A crash involving an other vehicle resulted in a fatality. Passenger cars were the vehicle type most often involved in crashes, accounting for 35 percent of all vehicles in crashes. Pickups and 4WD/Vans were the vehicle types next most often involved in crashes, each accounting for 23 percent of all vehicles in crashes. Together these three vehicle types comprised 64 percent of the vehicles involved in injury crashes. The two most common top contributing factors were driver inattention and excessive speed. There was one fatal crash in 2005. The top contributing factor for the fatal crash was 'other.'

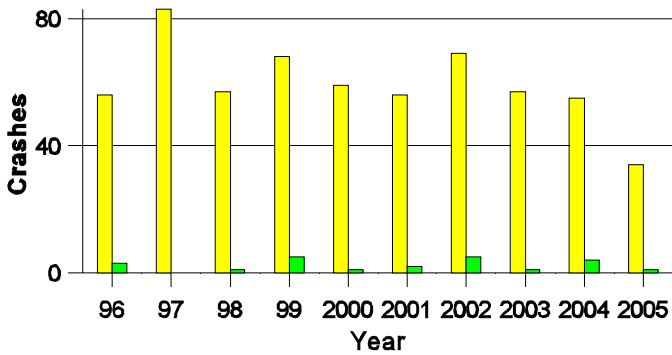
People in Crashes

Overall, males were 69 percent of drivers in crashes, although they account for only 50 percent of licensed drivers in De Baca County. There were no pedestrians involved in crashes. In 2005, no 'teenagers' and no young adults were killed in crashes in De Baca County. Statewide 17 percent of alcohol-involved drivers were under 21. In De Baca County, the sole person in an alcohol-involved crash was a male alcohol-involved driver between forty and forty-four years old.

Note: The 1999 crash file contains 15% fewer crashes than the 1998 file. This may be due to problems implementing the new system after the old system failed, or to under reporting. Care should be used in interpreting differences between 1999 and other years in this report.

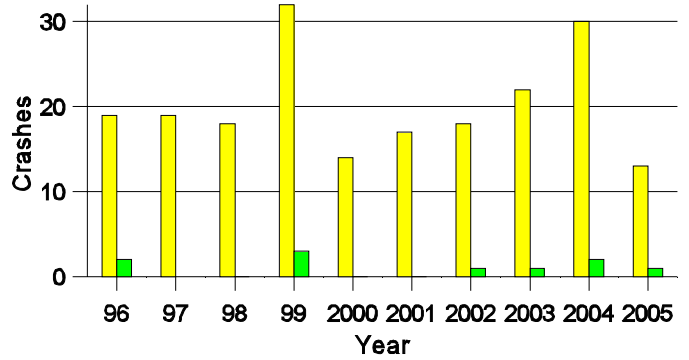
- Location of arrest/conviction was determined by police agency/court location, not driver residence.
- Crashes and drivers were counted by the city of occurrence/residence.
- Population was counted according to the Census definition, using 2005 estimates.
- Young adults are people between the ages of 20 and 24.
'Teenagers' are people between the ages of 15 and 19.
- Tables only include variable values for which there are data.

Crashes in De Baca County by Alcohol Involvement



All Crashes
 Alcohol-involved Crashes

Fatal and Injury Crashes in De Baca County by Alcohol Involvement



All Fatal and Injury Crashes
 Alcohol-involved Fatal and Injury Crashes

Passenger Vehicle Seatbelt Usage and Injuries in De Baca County, 2003-2005

Injury Level	2005		2004		2003	
	Total	No Belt	Total	No Belt	Total	No Belt
Killed	1	0	1	1	3	1
Incapacitating injury	1	0	9	1	9	2
Visible injury	6	1	18	2	4	1
Complaint of injury	5	1	10	0	11	0
Unhurt	45	2	59	1	65	1
Total	58	4	97	5	92	5

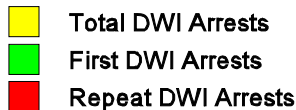
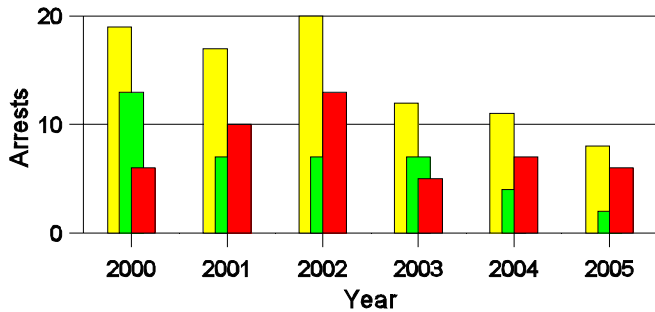
Lifetime DWI Convictions for Drivers Convicted of DWI Violations in De Baca County, 2005

Convictions	Since 2000	Since 1981
1st	3	3
2nd	2	1
3rd	0	1
4th	0	0
5th	0	0
6th	0	0
7th	0	0
8th	0	0
9th	0	0
10 or more	0	0
Total	5	5

Convictions are counts of people convicted of DWI by 7/2006 for violations in 2005 in De Baca County. Convictions are not comparable to arrests.

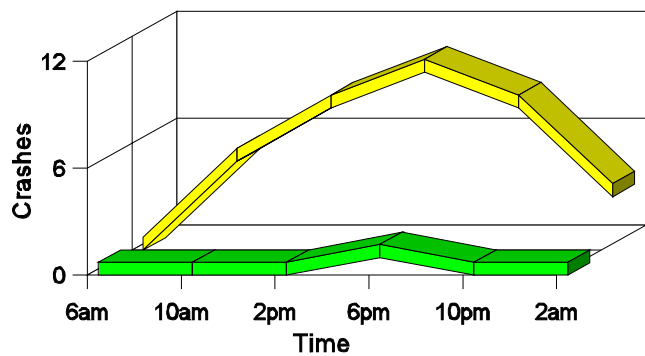
DWI Arrests in De Baca County

Showing First Arrests and Repeat Offenders



Crashes in De Baca County

by Hour and Alcohol Involvement



Crashes in De Baca County by Class, 2005

Class	Crashes					People	
	Total	% of Total	Fatal	% of Fatal	Injury	Killed	Injured
Other vehicle	5	15	1	100	1	1	4
Fixed object	6	18	0	0	3	0	4
Overturn	12	35	0	0	6	0	7
Other non-collision	3	9	0	0	0	0	0
Pedalcyclist	1	3	0	0	1	0	1
Animal	7	21	0	0	1	0	2
Total	34	100	1	100	12	1	18

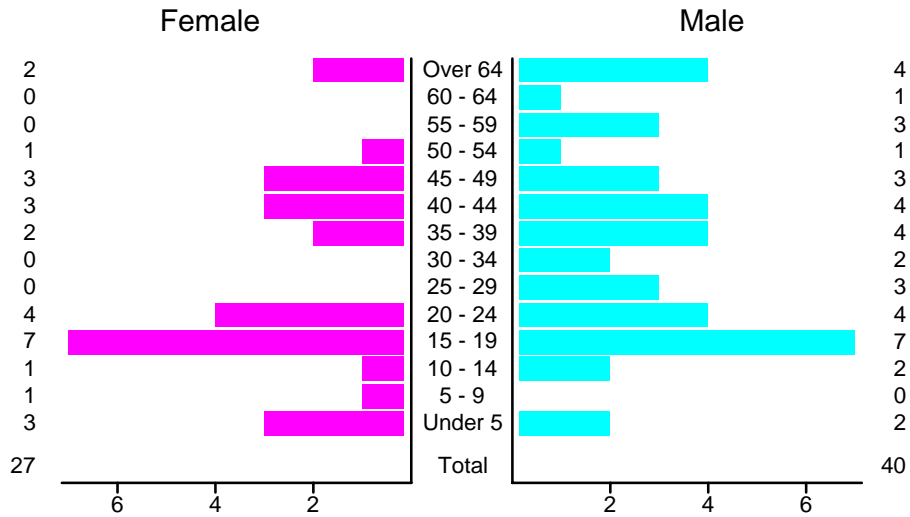
Crashes in De Baca County by Vehicle Type, 2005

Vehicle Type	Vehicles					People	
	Total	% of Total	Fatal	% of Fatal	Injury	Killed	Injured
Passenger car	14	35	0	0	5	0	8
Pickup	9	23	0	0	3	0	2
Semi	6	15	0	0	3	0	3
Motorcycle	1	3	0	0	1	0	1
Pedalcyclist	1	3	0	0	1	0	1
Van/4 WD	9	23	2	100	1	1	3
Total	40	100	2	100	14	1	18

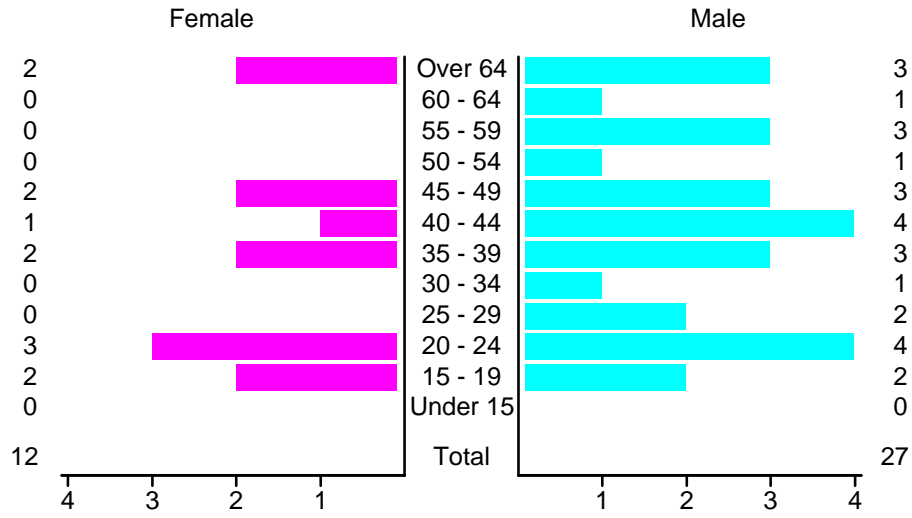
Crashes in De Baca County by Top Contributing Factor, 2005

Contributing Factor	Crashes				People		
	Total	% of Total	Fatal	% of Fatal	Injury	Killed	Injured
Alcohol involvement	1	3	0	0	1	0	1
Failing to yield	1	3	0	0	1	0	1
Excessive speed	6	18	0	0	3	0	4
Driving left of center	2	6	0	0	1	0	2
Inop. traffic control	1	3	0	0	1	0	2
Mechanical defect	1	3	0	0	0	0	0
Driver inattention	12	35	0	0	5	0	6
Other	10	29	1	100	0	1	2
Total	34	100	1	100	12	1	18

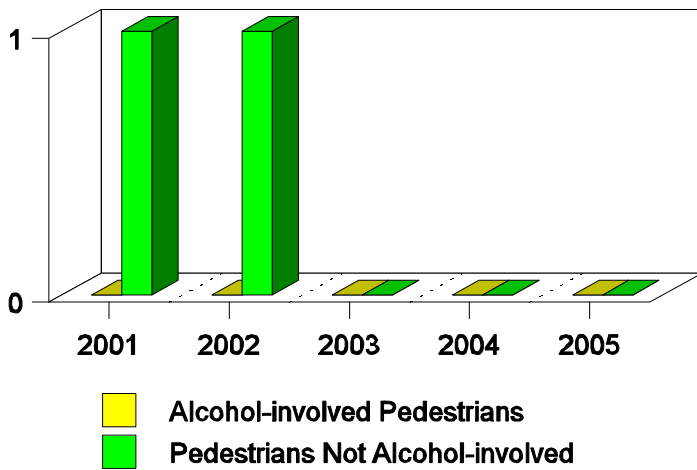
People in Crashes by Age and Sex in De Baca County, 2005



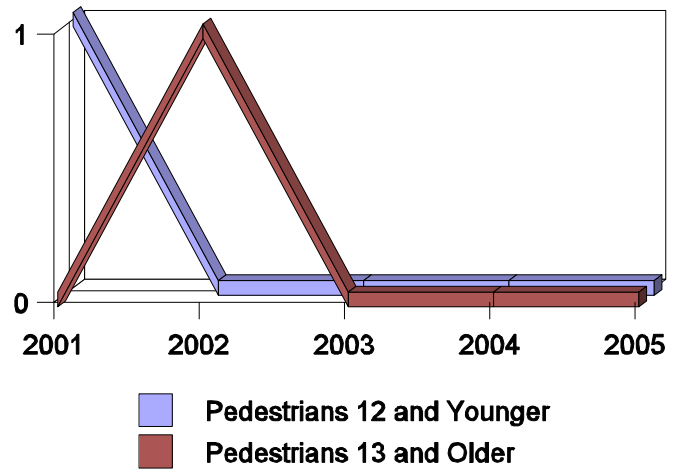
Drivers in Crashes by Age and Sex in De Baca County, 2005



Pedestrians in Crashes in De Baca County by Pedestrian Alcohol Involvement



Pedestrians in Crashes in De Baca County by Age Group



'Teenagers' and Young Adults in Crashes in De Baca County by Vehicle Type, 2005

Vehicle	'Teenage' Drivers			Young Adult Drivers		
	Total	Fatal	Injury	Total	Fatal	Injury
Passenger car	3	0	1	5	0	1
Pickup	1	0	0	1	0	0
Semi	0	0	0	1	0	1
Total	4	0	1	7	0	2

'Teenagers' and Young Adults in Crashes in De Baca County, 1996-2005

Year	'Teenagers'				Young Adults			
	All Crashes		Alcohol Crashes		All Crashes		Alcohol Crashes	
	Killed	Injured	Killed	Injured	Killed	Injured	Killed	Injured
2005	0	3	0	0	0	2	0	0
2004	1	11	1	1	0	5	0	0
2003	1	6	0	0	0	3	0	1
2002	0	3	0	0	0	4	0	0
2001	0	10	0	0	0	5	0	0
2000	0	2	0	0	0	2	0	0
1999	0	11	0	0	0	5	0	0
1998	0	8	0	0	0	1	0	0
1997	2	13	0	0	0	2	0	0
1996	0	7	0	0	0	8	0	3