

# Deming Community Report, 2005

## Demographics

In 2005, there were 16,688 licensed drivers in Deming. Of these, there were 7,968 females and 8,700 males. The population of Deming was 14,876. The total number of crashes in 2005 was 287, yielding a crash rate of 19 per thousand people (total number of crashes 287 divided by total population 14,876 times 1,000). The corresponding rate for the state was 25 per thousand people.

## General Crash Information

Since 1996 the number of crashes has shown no consistent pattern. Fatal and injury crashes have also shown no consistent pattern since 1996. Belt usage (as a percentage) has decreased from last year, while belt usage in crashes involving visible and incapacitating injuries has also decreased. There were no fatalities in the seven intersections with the most crashes in 2005. Of these intersections, three involve Gold Avenue.

## Alcohol-related Crash Information

Information about alcohol-involved crashes is included in all sections of this report. Of the 27 people convicted of DWI in Deming, 52 percent were first-time DWI convictions (number of first convictions 14 divided by the total number of people convicted 27 times 100). The corresponding percent for the state is 61.

## Crash Specifics

Crashes involving other vehicles were the most common class, accounting for 75 percent of all crashes. Crashes involving overturns, an other vehicle, and a pedestrian resulted in fatalities. Passenger cars were the vehicle type most often involved in crashes, accounting for 44 percent of all vehicles in crashes. Pickups accounted for 27 percent of vehicles involved in crashes. Together these two vehicle types comprised 69 percent of the vehicles involved in injury crashes. The three most common top contributing factors were failing to yield, driver inattention, and following too close. There were four fatal crashes in 2005. There were no common top contributing factors for the fatal crashes.

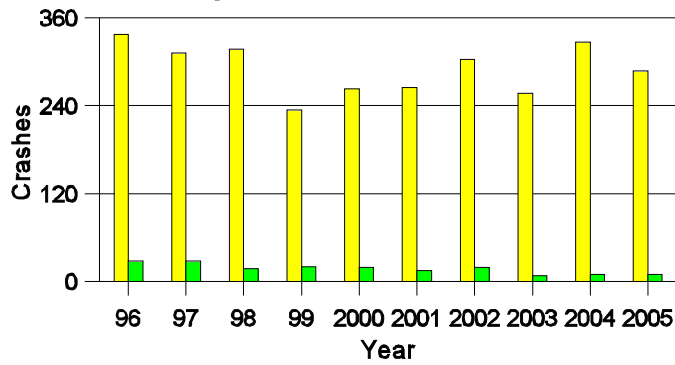
## People in Crashes

Overall, males were 55 percent of drivers in crashes, although they account for 52 percent of licensed drivers in Deming. There were five pedestrians in crashes. Statewide 17 percent of alcohol-involved drivers were under 21; in Deming 11 percent were under 21. No 'teenagers' or young adults were killed in crashes in 2005.

**Note:** The 1999 crash file contains 15% fewer crashes than the 1998 file. This may be due to problems implementing the new system after the old system failed, or to under reporting. Care should be used in interpreting differences between 1999 and other years in this report.

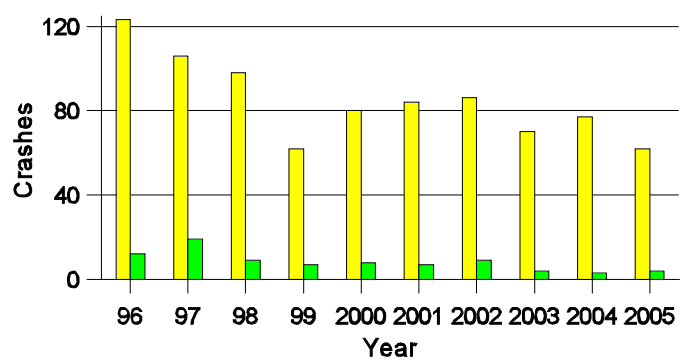
- Location of arrest/conviction was determined by police agency/court location, not driver residence.
- Crashes and drivers were counted by the city of occurrence/residence.
- Population was counted according to the Census definition.  
The city population data is from the most current 2005 estimates.
- Young adults are people between the ages of 20 and 24.
- 'Teenagers' are people between the ages of 15 and 19.
- Tables only include variable values for which there are data.

### Crashes in Deming by Alcohol Involvement



■ All Crashes  
■ Alcohol-involved Crashes

### Fatal and Injury Crashes in Deming by Alcohol Involvement



■ All Fatal and Injury Crashes  
■ Alcohol-involved Fatal and Injury Crashes

### Passenger Vehicle Seatbelt Usage and Injuries in Deming, 2003-2005

Injury Level	2005		2004		2003	
	Total	No Belt	Total	No Belt	Total	No Belt
Killed	3	1	0	0	0	0
Incapacitating injury	7	2	10	0	15	4
Visible injury	13	5	22	2	17	2
Complaint of injury	49	0	54	1	56	1
Unhurt	610	5	721	12	547	9
<b>Total</b>	<b>682</b>	<b>13</b>	<b>807</b>	<b>15</b>	<b>635</b>	<b>16</b>

### The Seven Intersections in Deming with the Most Crashes, 2005

Intersection	Crashes			People	
	Total	Fatal	Injury	Killed	Injured
8th St @ Buckeye St	4	0	1	0	2
8th St @ Spruce St	5	0	0	0	0
Cedar St @ Pearl St	5	0	2	0	4
Country Club Rd @ Pine St	6	0	1	0	2
Gold Ave @ Pine St	17	0	4	0	4
Gold Ave @ Railroad Blvd	5	0	1	0	1
Gold Ave @ Spruce St	8	0	1	0	1

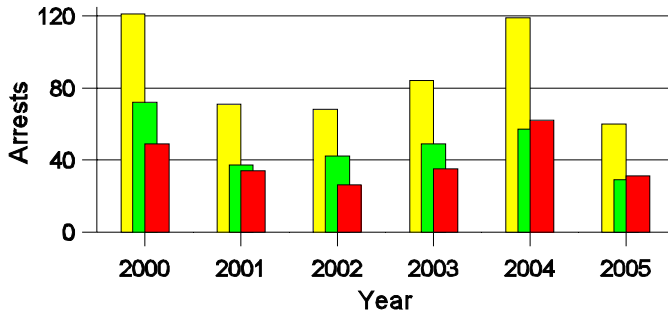
**Lifetime DWI Convictions for Drivers  
Convicted of DWI Violations in Deming, 2005**

Convictions	Since 2000	Since 1981
1st	17	14
2nd	10	6
3rd	0	3
4th	0	2
5th	0	1
6th	0	1
7th	0	0
8th	0	0
9th	0	0
10 or more	0	0
<b>Total</b>	<b>27</b>	<b>27</b>

Convictions are counts of people convicted of DWI by 7/2006 for violations in 2005 in Deming.  
Convictions are not comparable to arrests.

**DWI Arrests in Deming**

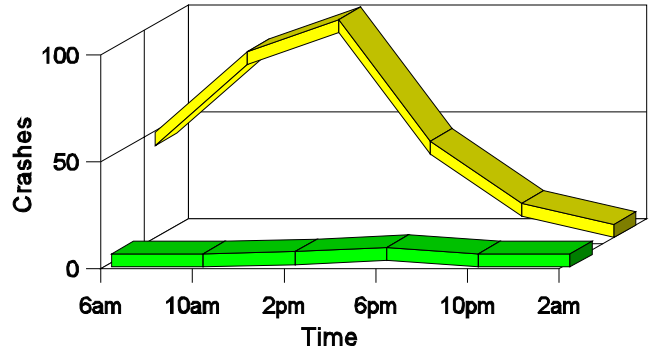
Showing First Arrests and Repeat Offenders



■ Total DWI Arrests  
■ First DWI Arrests  
■ Repeat DWI Arrests

**Crashes in Deming**

by Hour and Alcohol Involvement



■ All Crashes  
■ Alcohol-involved Crashes

**Crashes in Deming by Class, 2005**

Class	Crashes				People		
	Total	% of Total	Fatal	% of Fatal	Injury	Killed	Injured
Other vehicle	214	75	1	25	43	2	65
Pedestrian	5	2	1	25	3	1	3
Fixed object	25	9	0	0	2	0	2
Parked vehicle	22	8	0	0	1	0	1
Overturn	9	3	2	50	6	2	12
Other non-collision	3	1	0	0	0	0	0
Pedalcyclist	4	1	0	0	3	0	3
Animal	1	0	0	0	0	0	0
Other object	4	1	0	0	0	0	0
<b>Total</b>	<b>287</b>	<b>100</b>	<b>4</b>	<b>100</b>	<b>58</b>	<b>5</b>	<b>86</b>

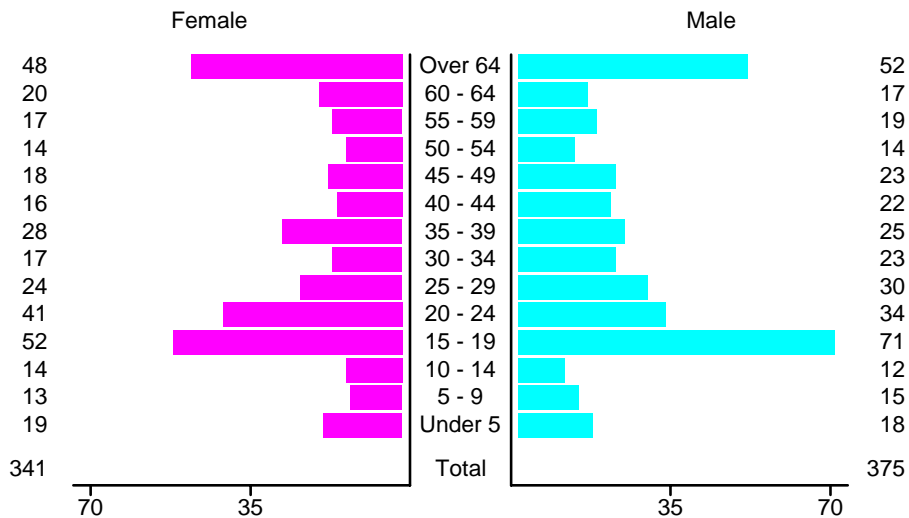
### Crashes in Deming by Vehicle Type, 2005

Vehicle Type	Vehicles				People		
	Total	% of Total	Fatal	% of Fatal	Injury	Killed	Injured
Passenger car	238	44	0	0	47	0	43
Pickup	143	27	2	33	27	1	16
Semi	18	3	0	0	4	0	4
Bus	4	1	0	0	1	0	0
Motorcycle	6	1	0	0	5	0	5
Pedalcyclist	4	1	0	0	3	0	3
Pedestrian	5	1	1	17	3	1	3
Van/4 WD	89	17	3	50	14	3	11
Other	2	0	0	0	1	0	0
Unknown	26	5	0	0	3	0	1
<b>Total</b>	<b>535</b>	<b>100</b>	<b>6</b>	<b>100</b>	<b>108</b>	<b>5</b>	<b>86</b>

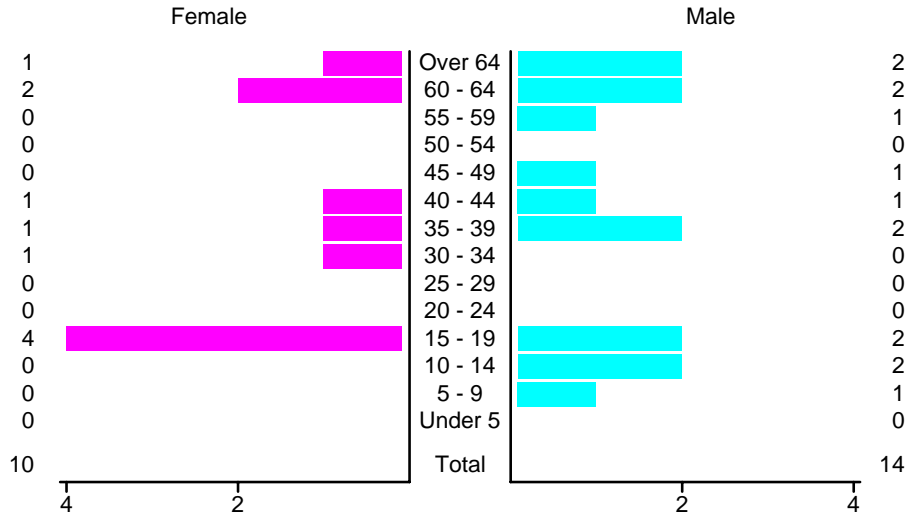
### Crashes in Deming by Top Contributing Factor, 2005

Contributing Factor	Crashes				People		
	Total	% of Total	Fatal	% of Fatal	Injury	Killed	Injured
Alcohol involvement	10	3	1	25	3	2	4
Red light running	32	11	0	0	8	0	11
Failing to yield	54	19	0	0	13	0	21
Excessive speed	20	7	1	25	6	1	12
Driving left of center	6	2	0	0	1	0	1
Following too close	44	15	0	0	6	0	9
Improper turning	15	5	0	0	3	0	4
Improper overtaking	2	1	0	0	0	0	0
Improper backing	13	5	0	0	1	0	1
Mechanical defect	6	2	0	0	0	0	0
Driver inattention	53	18	1	25	12	1	17
Other	32	11	1	25	5	1	6
<b>Total</b>	<b>287</b>	<b>100</b>	<b>4</b>	<b>100</b>	<b>58</b>	<b>5</b>	<b>86</b>

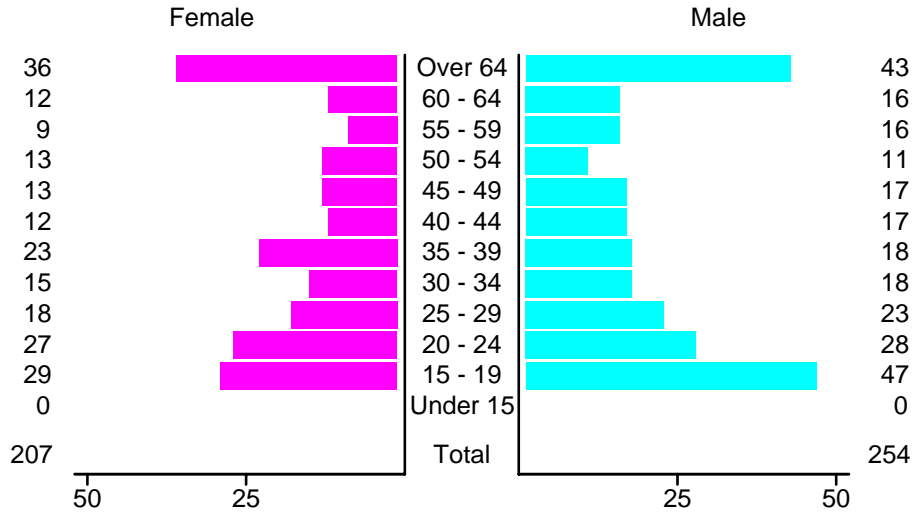
### People in Crashes by Age and Sex in Deming, 2005



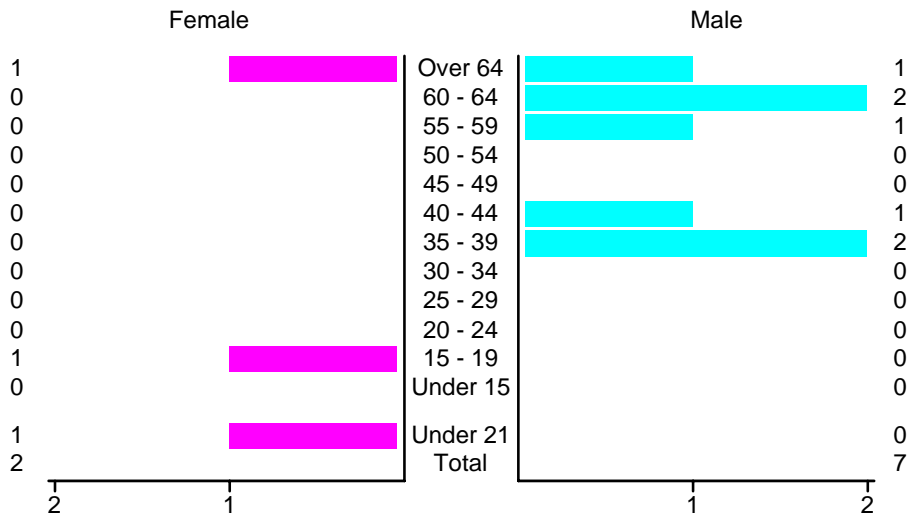
### People in Alcohol-Involved Crashes in Deming, 2005 by Age and Sex



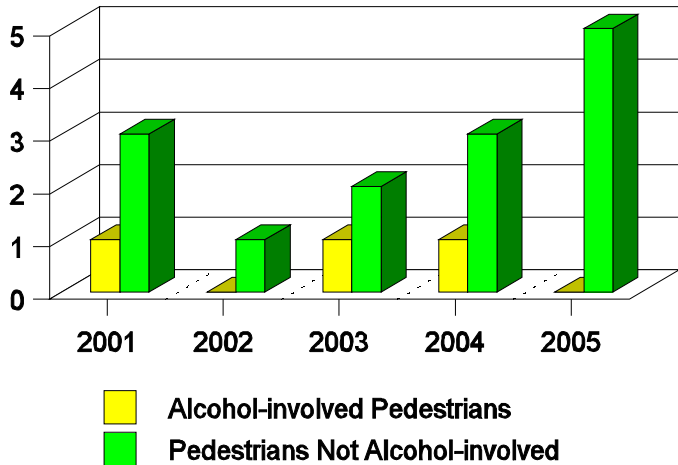
### Drivers in Crashes by Age and Sex in Deming, 2005



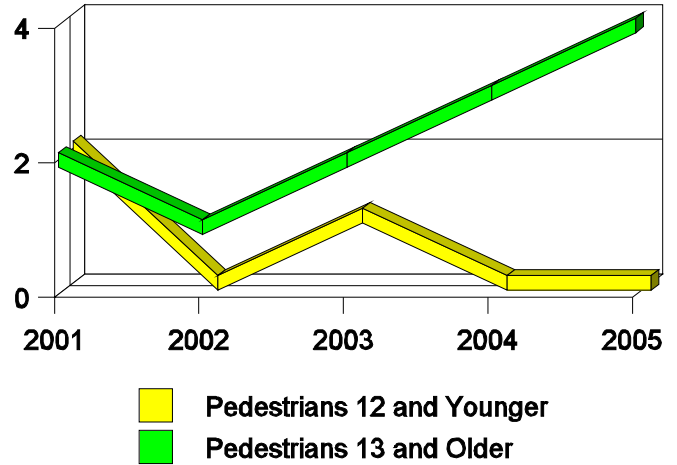
### Alcohol-Involved Drivers in Crashes in Deming, 2005 by Age and Sex



**Pedestrian in Crashes in Deming  
by Pedestrian Alcohol Involvement**



**Pedestrian in Crashes in Deming  
by Age Group**



**'Teenagers' and Young Adults in Crashes in Deming by Vehicle Type, 2005**

Vehicle	'Teenage' Drivers			Young Adult Drivers		
	Total	Fatal	Injury	Total	Fatal	Injury
Passenger car	47	0	9	28	0	8
Pickup	21	0	8	15	0	1
Semi	0	0	0	1	0	0
Motorcycle	0	0	0	1	0	1
Pedestrian	0	0	0	1	1	0
Van/4 WD	9	0	1	9	0	0
Unknown	0	0	0	1	0	1
<b>Total</b>	<b>77</b>	<b>0</b>	<b>18</b>	<b>56</b>	<b>1</b>	<b>11</b>

**'Teenagers' and Young Adults Killed and Injured in Crashes by Year in Deming, 1996-2005**

Year	'Teenagers'				Young Adults			
	All Crashes		Alcohol Crashes		All Crashes		Alcohol Crashes	
	Killed	Injured	Killed	Injured	Killed	Injured	Killed	Injured
2005	0	13	0	1	0	6	0	0
2004	0	7	0	0	0	9	0	1
2003	0	22	0	1	0	10	0	2
2002	1	26	0	4	0	14	0	1
2001	0	22	0	2	0	16	0	2
2000	0	16	0	2	0	14	0	5
1999	1	16	1	1	0	9	0	0
1998	0	29	0	3	0	14	0	2
1997	0	30	0	5	0	20	0	7
1996	0	38	0	2	0	17	0	0