

Farmington Community Report, 2005

Demographics

In 2005, there were 35,099 licensed drivers in Farmington. Of these, there were 17,851 females and 17,248 males. The population of Farmington was 43,161. The total number of crashes in 2005 was 1,689, yielding a crash rate of 39 per thousand people (total number of crashes 1,689 divided by total population 43,161 times 1,000). The corresponding rate for the state was 25 per thousand people.

General Crash Information

Since 1996 the number of crashes has shown no consistent pattern. Fatal and injury crashes have also shown no consistent pattern since 1996. Belt usage (as a percentage) has increased from last year, while belt usage in crashes involving visible and incapacitating injuries has also increased. There was one fatality in the seven intersections with the most crashes in 2005. Of these intersections, five involve Main Street.

Alcohol-related Crash Information

Information about alcohol-involved crashes is included in all sections of this report. Of the 446 people convicted of DWI in Farmington, 52 percent were first-time DWI convictions (number of first convictions 230 divided by the total number of people convicted 446 times 100). The corresponding percent for the state is 61.

Crash Specifics

Crashes involving other vehicles were the most common class, accounting for 80 percent of all crashes. Crashes involving other vehicles, an other non-collision, and a pedestrian resulted in fatalities. Passenger cars were the vehicle type most often involved in crashes, accounting for 42 percent of all vehicles in crashes. Pickups accounted for 31 percent of vehicles involved in crashes. Together these two vehicle types comprised 74 percent of the vehicles involved in injury crashes. The three most common top contributing factors were following too close, failing to yield, and driver inattention. There were five fatal crashes in 2005. The most common top contributing factor for the fatal crashes was excessive speed.

People in Crashes

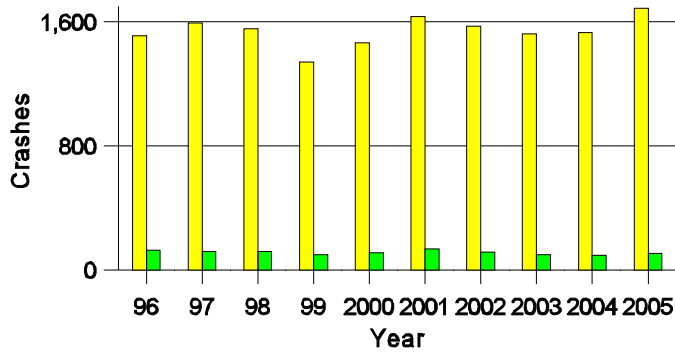
Overall, males were 52 percent of drivers in crashes, although they account for only 49 percent of licensed drivers in Farmington. There were 15 pedestrians in crashes; one pedestrian was killed. In 2005, one 'teenager' and one young adult were killed in crashes in Farmington. Statewide 17 percent of alcohol-involved drivers were under 21; in Farmington 13 percent were under 21.

Note: The 1999 crash file contains 15% fewer crashes than the 1998 file. This may be due to problems implementing the new system after the old system failed, or to under reporting. Care should be used in interpreting differences between 1999 and other years in this report.

- Location of arrest/conviction was determined by police agency/court location, not driver residence.
- Crashes and drivers were counted by the city of occurrence/residence.
- Population was counted according to the Census definition.
The city population data is from the most current 2005 estimates.
- Young adults are people between the ages of 20 and 24.
- 'Teenagers' are people between the ages of 15 and 19.
- Tables only include variable values for which there are data.

Crashes in Farmington

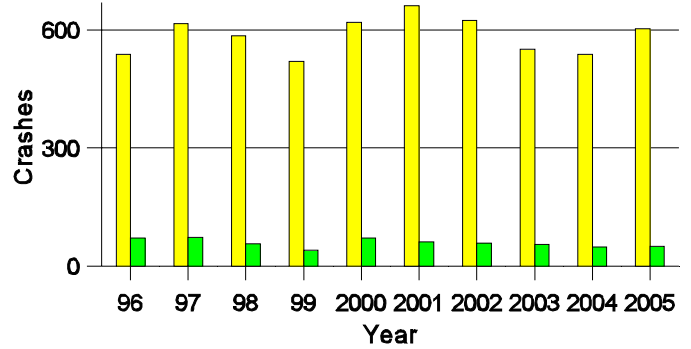
by Alcohol Involvement



■ All Crashes
■ Alcohol-involved Crashes

Fatal and Injury Crashes in Farmington

by Alcohol Involvement



■ All Fatal and Injury Crashes
■ Alcohol-involved Fatal and Injury Crashes

Passenger Vehicle Seatbelt Usage and Injuries in Farmington, 2003-2005

Injury Level	2005		2004		2003	
	Total	No Belt	Total	No Belt	Total	No Belt
Killed	1	1	1	0	4	2
Incapacitating injury	59	3	57	3	83	11
Visible injury	111	17	98	16	120	11
Complaint of injury	631	10	593	7	535	13
Unhurt	3,798	40	3,493	42	3,491	60
Total	4,600	71	4,242	68	4,233	97

The Seven Intersections in Farmington with the Most Crashes, 2005

Intersection	Crashes			People	
	Total	Fatal	Injury	Killed	Injured
20th St @ Butler Ave	29	1	9	1	12
20th St @ Main St	46	0	17	0	25
30th St @ Main St	32	0	9	0	11
Bloomfield Hwy @ Browning Pkwy	27	0	8	0	13
Browning Pkwy @ Main St	41	0	16	0	22
Clayton Ave @ Main St	28	0	16	0	25
Cliffside Dr @ Main St	37	0	15	0	33

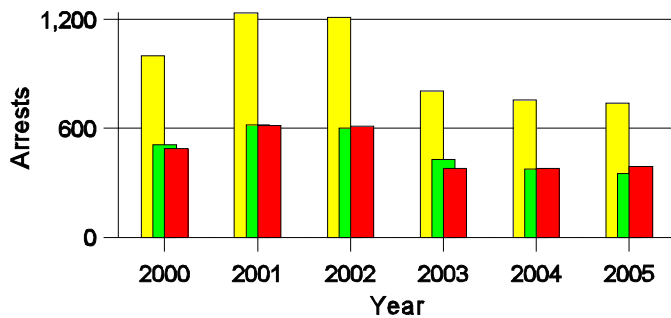
**Lifetime DWI Convictions for Drivers
Convicted of DWI Violations in Farmington, 2005**

Convictions	Since 2000	Since 1981
1st	293	230
2nd	110	98
3rd	32	49
4th	10	43
5th	1	14
6th	0	2
7th	0	6
8th	0	1
9th	0	1
10 or more	0	2
Total	446	446

Convictions are counts of people convicted of DWI by 7/2006 for violations in 2005 in Farmington.
Convictions are not comparable to arrests.

DWI Arrests in Farmington

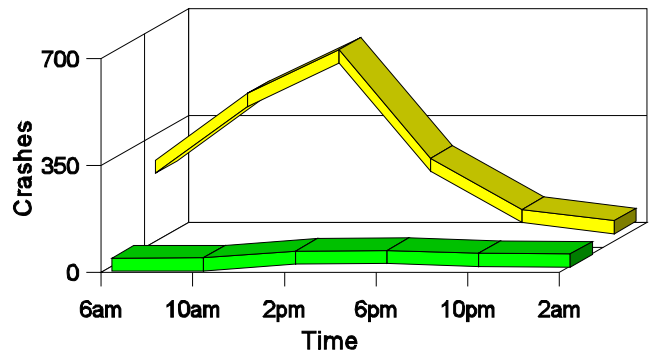
Showing First Arrests and Repeat Offenders



■ Total DWI Arrests
■ First DWI Arrests
■ Repeat DWI Arrests

Crashes in Farmington

by Hour and Alcohol Involvement



■ All Crashes
■ Alcohol-involved Crashes

Crashes in Farmington by Class, 2005

Class	Crashes				People		
	Total	% of Total	Fatal	% of Fatal	Injury	Killed	Injured
Other vehicle	1,353	80	3	60	508	3	792
Pedestrian	14	1	1	20	12	1	15
Fixed object	162	10	0	0	33	0	38
Veh. on other roadway	2	0	0	0	1	0	3
Parked vehicle	84	5	0	0	11	0	15
Overturn	23	1	0	0	16	0	21
Other non-collision	13	1	1	20	8	1	9
Pedalcyclist	12	1	0	0	10	0	10
Animal	25	1	0	0	0	0	0
Other object	1	0	0	0	0	0	0
Total	1,689	100	5	100	599	5	903

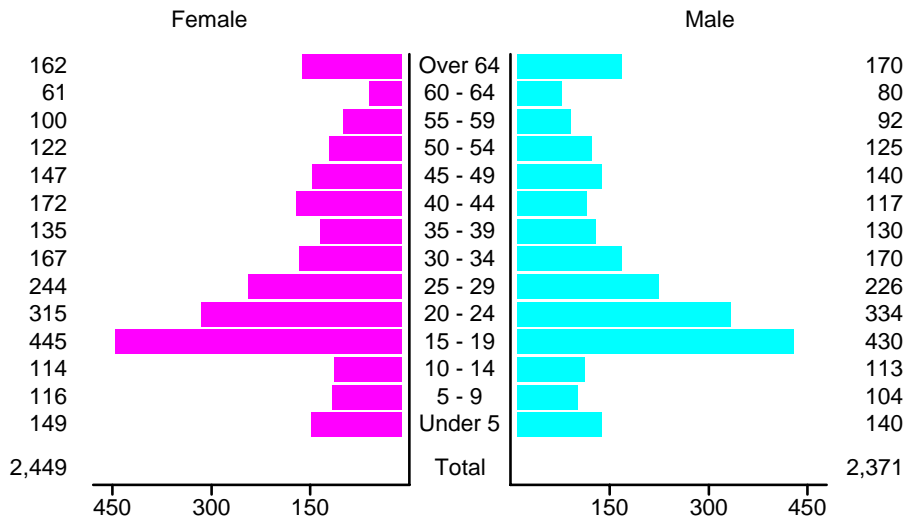
Crashes in Farmington by Vehicle Type, 2005

Vehicle Type	Vehicles					People	
	Total	% of Total	Fatal	% of Fatal	Injury	Killed	Injured
Passenger car	1,398	42	2	20	561	1	480
Pickup	1,041	31	3	30	362	1	200
Semi	55	2	0	0	13	0	2
Bus	2	0	0	0	1	0	0
Motorcycle	38	1	2	20	30	2	33
Pedalcyclist	13	0	0	0	11	0	10
Pedestrian	15	0	1	10	13	1	13
Van/4 WD	682	21	2	20	250	0	162
Other	4	0	0	0	1	0	0
Unknown	65	2	0	0	8	0	3
Total	3,313	100	10	100	1,250	5	903

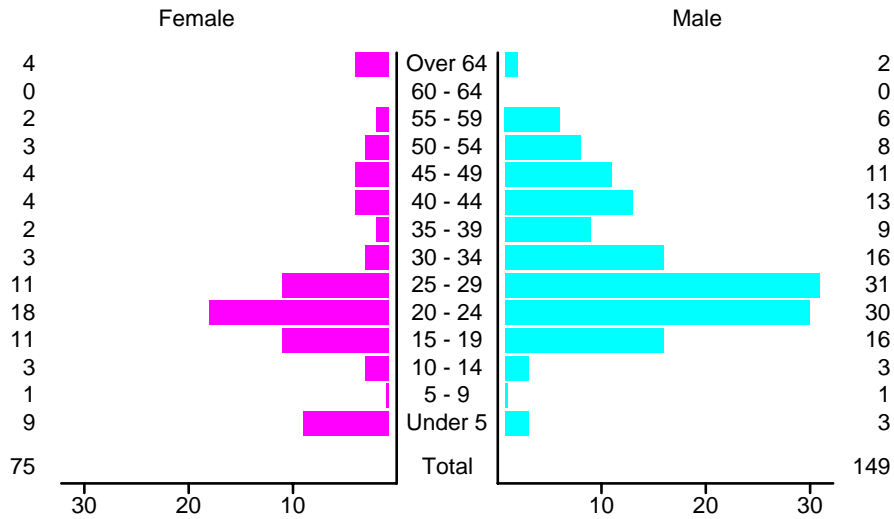
Crashes in Farmington by Top Contributing Factor, 2005

Contributing Factor	Crashes					People	
	Total	% of Total	Fatal	% of Fatal	Injury	Killed	Injured
Alcohol involvement	109	6	0	0	51	0	62
Red light running	168	10	1	20	77	1	123
Failing to yield	314	19	1	20	117	1	196
Excessive speed	83	5	2	40	24	2	40
Driving left of center	62	4	0	0	13	0	22
Following too close	410	24	0	0	171	0	242
Improper turning	62	4	0	0	12	0	24
Improper overtaking	8	0	0	0	2	0	2
Improper backing	37	2	0	0	1	0	1
Inop. traffic control	13	1	0	0	0	0	0
Mechanical defect	23	1	0	0	8	0	14
Driver inattention	286	17	0	0	101	0	151
Improper driving	1	0	0	0	0	0	0
Other	113	7	1	20	22	1	26
Total	1,689	100	5	100	599	5	903

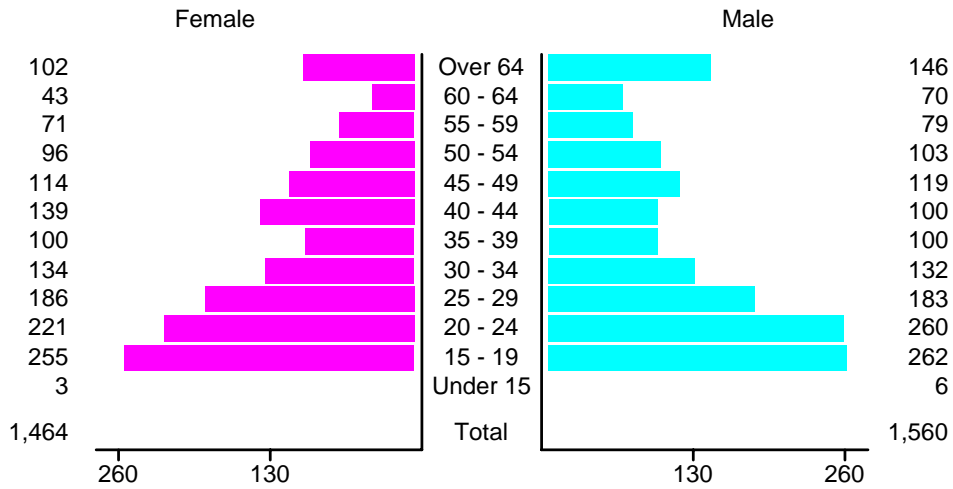
People in Crashes by Age and Sex in Farmington, 2005



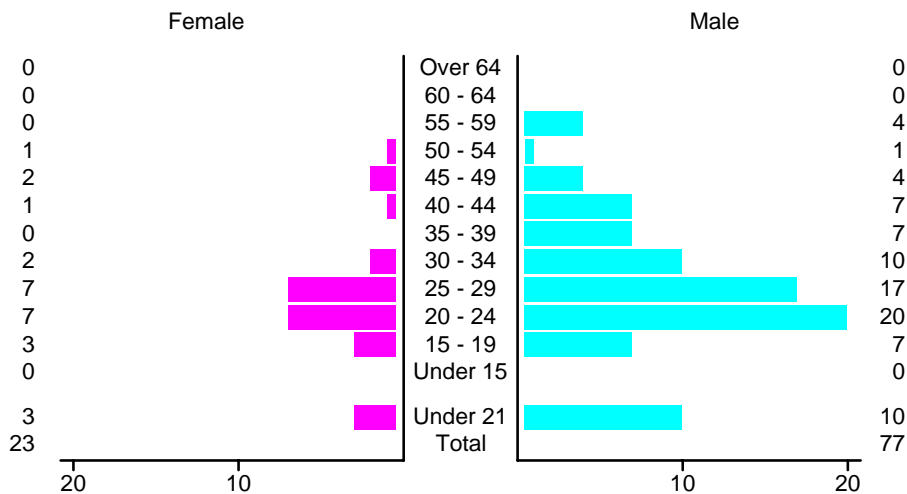
People in Alcohol-Involved Crashes in Farmington, 2005 by Age and Sex



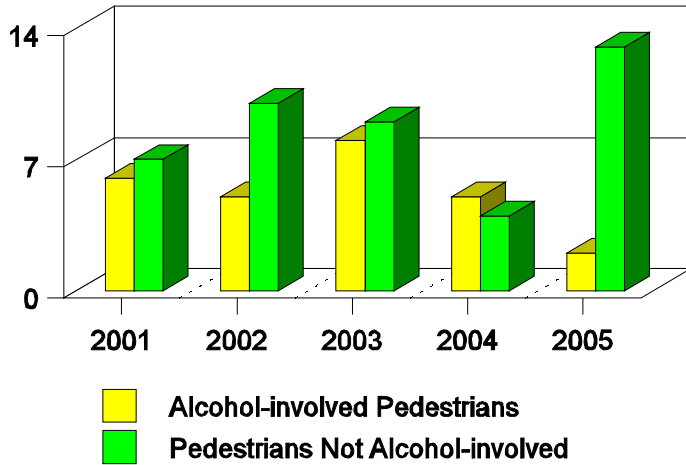
Drivers in Crashes by Age and Sex in Farmington, 2005



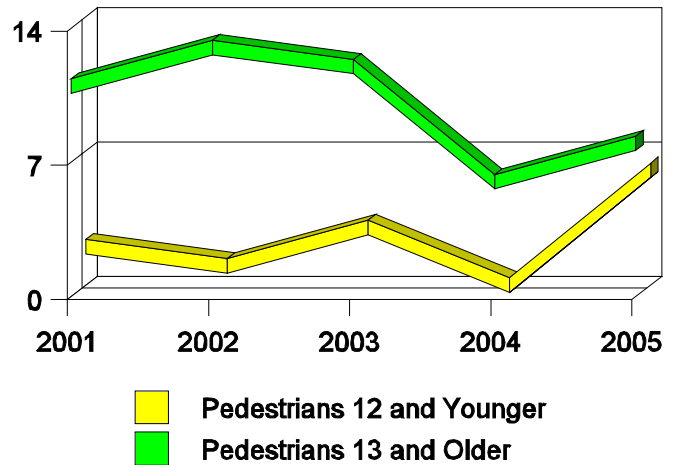
Alcohol-Involved Drivers in Crashes in Farmington, 2005 by Age and Sex



**Pedestrian in Crashes in Farmington
by Pedestrian Alcohol Involvement**



**Pedestrian in Crashes in Farmington
by Age Group**



'Teenagers' and Young Adults in Crashes in Farmington by Vehicle Type, 2005

Vehicle	'Teenage' Drivers			Young Adult Drivers		
	Total	Fatal	Injury	Total	Fatal	Injury
Passenger car	269	1	101	236	1	109
Pickup	142	2	50	152	1	57
Semi	0	0	0	4	0	0
Motorcycle	4	0	2	10	0	9
Pedalcyclist	1	0	1	2	0	2
Pedestrian	1	0	0	2	0	2
Van/4 WD	102	0	34	77	1	31
Other	0	0	0	1	0	0
Unknown	2	0	0	3	0	0
Total	521	3	188	487	3	210

'Teenagers' and Young Adults Killed and Injured in Crashes by Year in Farmington, 1996-2005

Year	'Teenagers'				Young Adults			
	All Crashes		Alcohol Crashes		All Crashes		Alcohol Crashes	
	Killed	Injured	Killed	Injured	Killed	Injured	Killed	Injured
2005	1	142	0	11	1	148	0	10
2004	1	130	0	11	0	119	0	12
2003	2	146	0	8	1	107	0	16
2002	0	183	0	21	0	131	0	22
2001	0	215	0	23	0	155	0	26
2000	0	219	0	26	0	121	0	35
1999	0	188	0	14	0	89	0	12
1998	0	221	0	17	0	97	0	16
1997	0	204	0	15	0	125	0	22
1996	0	183	0	11	0	98	0	15