

# Las Cruces Community Report, 2005

## Demographics

In 2005, there were 79,234 licensed drivers in Las Cruces. Of these, there were 40,423 females and 38,811 males. The population of Las Cruces was 82,671. The total number of crashes in 2005 was 2,661, yielding a crash rate of 32 per thousand people (total number of crashes 2,661 divided by total population 82,671 times 1,000). The corresponding rate for the state was 25 per thousand people.

## General Crash Information

Since 1996 the number of crashes has shown no consistent pattern. Fatal and injury crashes have also shown no consistent pattern since 1996. Belt usage (as a percentage) has increased from last year, while belt usage in crashes involving visible and incapacitating injuries has also increased. There were no fatalities in the seven intersections with the most crashes in 2005.

## Alcohol-related Crash Information

Information about alcohol-involved crashes is included in all sections of this report. Of the 144 people convicted of DWI in Las Cruces, 60 percent were first-time DWI convictions (number of first convictions 86 divided by the total number of people convicted 144 times 100). The corresponding percent for the state is 61.

## Crash Specifics

Crashes involving other vehicles were the most common class, accounting for 76 percent of all crashes. Crashes involving pedestrians were the most common crash class which resulted in fatalities. Passenger cars were the vehicle type most often involved in crashes, accounting for 50 percent of all vehicles in crashes. Pickups accounted for 24 percent of vehicles involved in crashes. Together these two vehicle types comprised 73 percent of the vehicles involved in injury crashes. The two most common top contributing factors were driver inattention and failing to yield. There were seven fatal crashes in 2005. The most common top contributing factor for the fatal crashes was failing to yield.

## People in Crashes

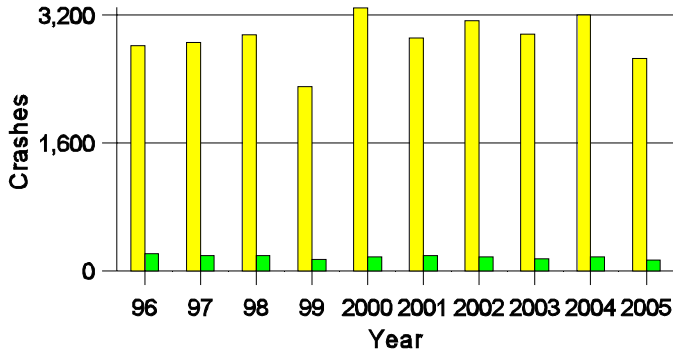
Overall, males were 51 percent of drivers in crashes, although they account for only 49 percent of licensed drivers in Las Cruces. There were 25 pedestrians involved in crashes in 2005. In 2005, no 'teenagers' and two young adults were killed in crashes in Las Cruces. Statewide 17 percent of alcohol-involved drivers were under 21; in Las Cruces 18 percent were under 21.

**Note:** The 1999 crash file contains 15% fewer crashes than the 1998 file. This may be due to problems implementing the new system after the old system failed, or to under reporting. Care should be used in interpreting differences between 1999 and other years in this report.

- Location of arrest/conviction was determined by police agency/court location, not driver residence.
- Crashes and drivers were counted by the city of occurrence/residence.
- Population was counted according to the Census definition.  
The city population data is from the most current 2005 estimates.
- Young adults are people between the ages of 20 and 24.
- 'Teenagers' are people between the ages of 15 and 19.
- Tables only include variable values for which there are data.

### Crashes in Las Cruces

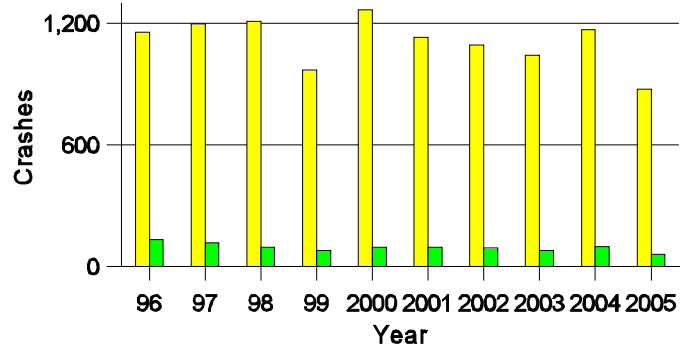
#### by Alcohol Involvement



■ All Crashes  
■ Alcohol-involved Crashes

### Fatal and Injury Crashes in Las Cruces

#### by Alcohol Involvement



■ All Fatal and Injury Crashes  
■ Alcohol-involved Fatal and Injury Crashes

### Passenger Vehicle Seatbelt Usage and Injuries in Las Cruces, 2003-2005

Injury Level	2005		2004		2003	
	Total	No Belt	Total	No Belt	Total	No Belt
Killed	4	2	5	3	7	4
Incapacitating injury	90	7	107	9	83	12
Visible injury	170	5	240	25	220	23
Complaint of injury	847	9	1,131	19	1,030	28
Unhurt	5,203	35	6,512	45	6,157	67
<b>Total</b>	<b>6,314</b>	<b>58</b>	<b>7,995</b>	<b>101</b>	<b>7,497</b>	<b>134</b>

### The Seven Intersections in Las Cruces with the Most Crashes, 2005

Intersection	Crashes			People	
	Total	Fatal	Injury	Killed	Injured
Avenida De Mesilla @ Valley Dr	23	0	7	0	7
El Paseo Rd @ Idaho Ave	39	0	19	0	28
El Paseo Rd @ University Ave	25	0	6	0	7
Elks Dr @ Main St	30	0	10	0	16
Lohman Ave @ Telshor Blvd	42	0	10	0	13
Lohman Ave @ Walnut St	30	0	13	0	15
Main St @ Solano Dr	42	0	19	0	25

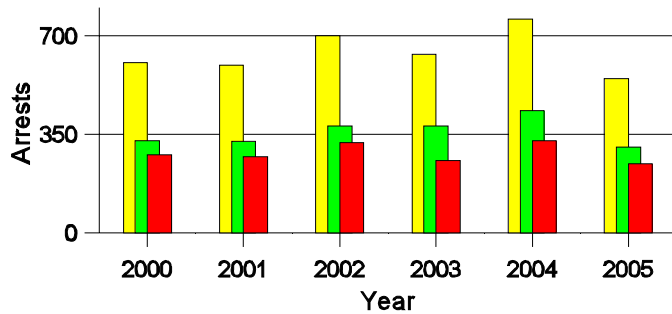
**Lifetime DWI Convictions for Drivers  
Convicted of DWI Violations in Las Cruces, 2005**

Convictions	Since 2000	Since 1981
1st	112	86
2nd	25	30
3rd	4	12
4th	3	9
5th	0	3
6th	0	2
7th	0	1
8th	0	1
9th	0	0
10 or more	0	0
<b>Total</b>	<b>144</b>	<b>144</b>

Convictions are counts of people convicted of DWI by 7/2006 for violations in 2005 in Las Cruces.  
Convictions are not comparable to arrests.

**DWI Arrests in Las Cruces**

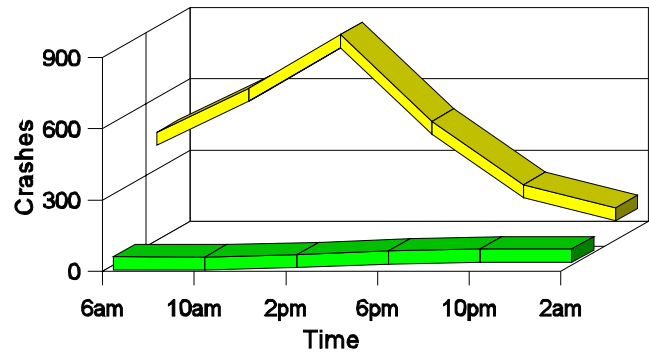
Showing First Arrests and Repeat Offenders



■ Total DWI Arrests  
■ First DWI Arrests  
■ Repeat DWI Arrests

**Crashes in Las Cruces**

by Hour and Alcohol Involvement



■ All Crashes  
■ Alcohol-involved Crashes

**Crashes in Las Cruces by Class, 2005**

Class	Crashes				People		
	Total	% of Total	Fatal	% of Fatal	Injury	Killed	Injured
Other vehicle	2,022	76	1	14	692	1	1,058
Pedestrian	25	1	2	29	21	2	23
Fixed object	256	10	1	14	61	1	75
Veh. on other roadway	1	0	0	0	0	0	0
Parked vehicle	221	8	0	0	13	0	17
Overturn	58	2	1	14	36	1	48
Other non-collision	33	1	0	0	16	0	19
Pedalcyclist	29	1	0	0	25	0	25
Railroad train	1	0	1	14	0	1	0
Animal	3	0	0	0	0	0	0
Other object	12	0	1	14	1	1	1
<b>Total</b>	<b>2,661</b>	<b>100</b>	<b>7</b>	<b>100</b>	<b>865</b>	<b>7</b>	<b>1,266</b>

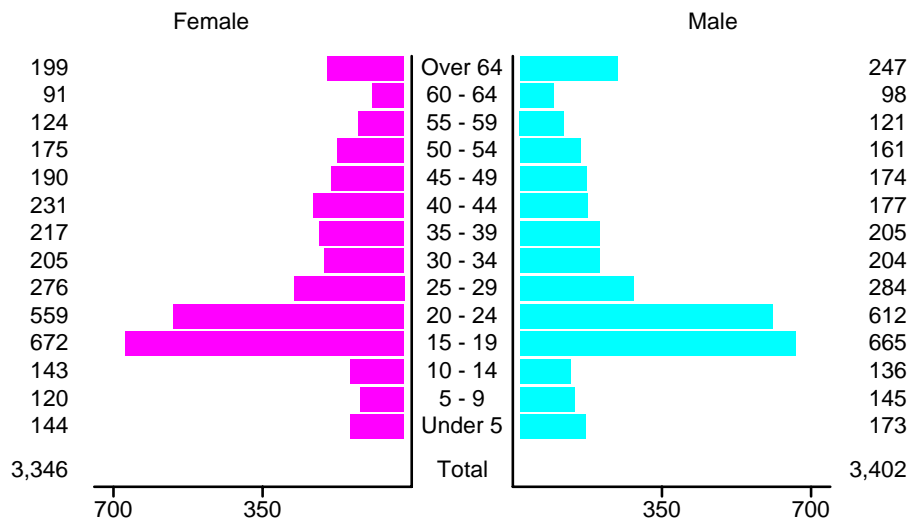
### Crashes in Las Cruces by Vehicle Type, 2005

Vehicle Type	Vehicles				People		
	Total	% of Total	Fatal	% of Fatal	Injury	Killed	Injured
Passenger car	2,574	50	6	43	888	4	692
Pickup	1,217	24	2	14	371	0	194
Semi	75	1	0	0	18	0	4
Bus	18	0	0	0	6	0	6
Motorcycle	60	1	1	7	43	1	45
Pedalcyclist	29	1	0	0	25	0	25
Pedestrian	25	0	2	14	21	2	22
Van/4 WD	851	17	2	14	293	0	259
Other	14	0	0	0	4	0	2
Unknown	289	6	1	7	52	0	17
<b>Total</b>	<b>5,152</b>	<b>100</b>	<b>14</b>	<b>100</b>	<b>1,721</b>	<b>7</b>	<b>1,266</b>

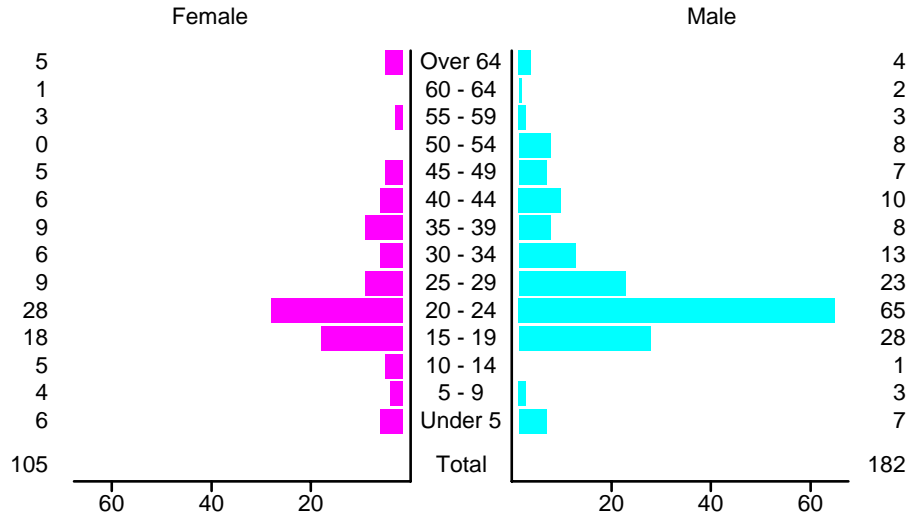
### Crashes in Las Cruces by Top Contributing Factor, 2005

Contributing Factor	Crashes				People		
	Total	% of Total	Fatal	% of Fatal	Injury	Killed	Injured
Alcohol involvement	150	6	1	14	60	1	87
Red light running	288	11	0	0	136	0	223
Failing to yield	429	16	4	57	164	4	254
Excessive speed	219	8	2	29	77	2	99
Driving left of center	38	1	0	0	8	0	11
Following too close	298	11	0	0	102	0	152
Improper turning	101	4	0	0	27	0	38
Improper overtaking	28	1	0	0	1	0	1
Improper backing	103	4	0	0	4	0	5
Inop. traffic control	23	1	0	0	4	0	5
Mechanical defect	37	1	0	0	9	0	17
Driver inattention	794	30	0	0	237	0	336
Improper driving	2	0	0	0	1	0	1
Other	151	6	0	0	35	0	37
<b>Total</b>	<b>2,661</b>	<b>100</b>	<b>7</b>	<b>100</b>	<b>865</b>	<b>7</b>	<b>1,266</b>

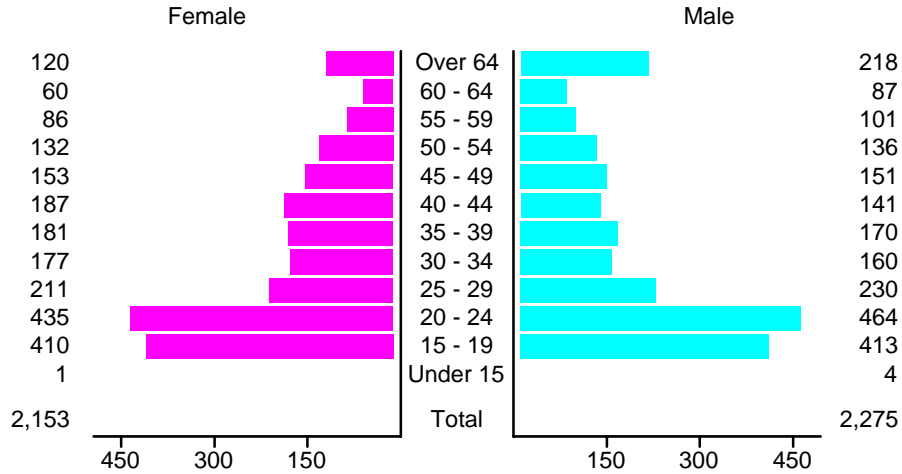
### People in Crashes by Age and Sex in Las Cruces, 2005



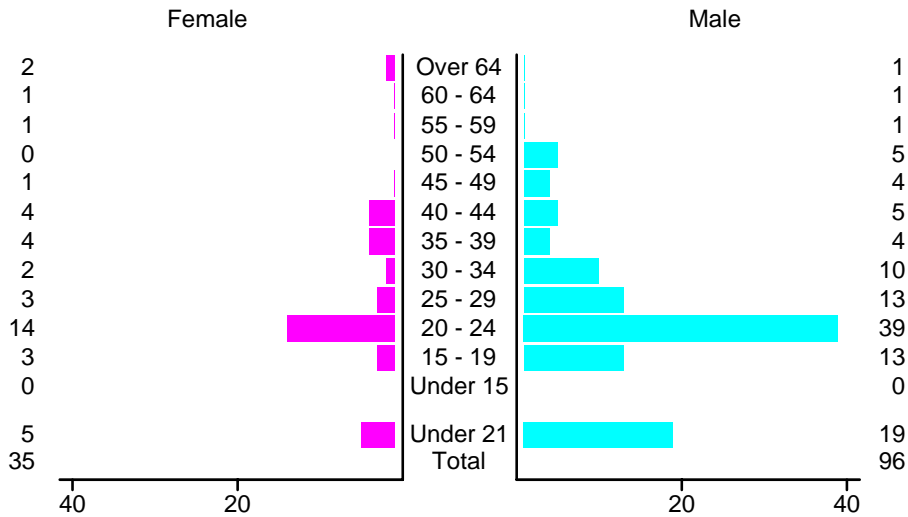
### People in Alcohol-Involved Crashes in Las Cruces, 2005 by Age and Sex



### Drivers in Crashes by Age and Sex in Las Cruces, 2005

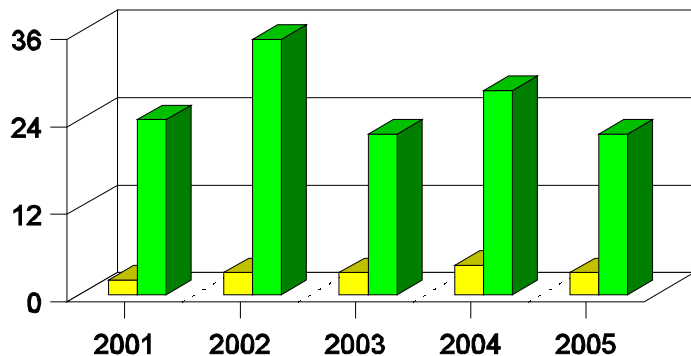


### Alcohol-Involved Drivers in Crashes in Las Cruces, 2005 by Age and Sex



### Pedestrian in Crashes in Las Cruces

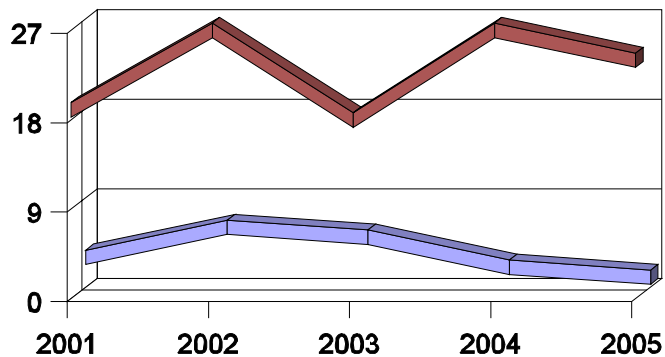
#### by Pedestrian Alcohol Involvement



Alcohol-involved Pedestrians  
 Pedestrians Not Alcohol-involved

### Pedestrian in Crashes in Las Cruces

#### by Age Group



Pedestrians 12 and Younger  
 Pedestrians 13 and Older

### 'Teenagers' and Young Adults in Crashes in Las Cruces by Vehicle Type, 2005

Vehicle	'Teenage' Drivers			Young Adult Drivers		
	Total	Fatal	Injury	Total	Fatal	Injury
Passenger car	512	0	172	561	3	203
Pickup	198	2	62	193	0	66
Semi	0	0	0	4	0	2
Motorcycle	5	0	4	17	0	9
Pedalcyclist	7	0	6	4	0	2
Pedestrian	6	0	6	2	0	2
Van/4 WD	90	0	32	105	1	29
Other	0	0	0	1	0	1
Unknown	18	0	5	19	0	7
<b>Total</b>	<b>836</b>	<b>2</b>	<b>287</b>	<b>906</b>	<b>4</b>	<b>321</b>

### 'Teenagers' and Young Adults Killed and Injured in Crashes by Year in Las Cruces, 1996-2005

Year	'Teenagers'				Young Adults			
	All Crashes		Alcohol Crashes		All Crashes		Alcohol Crashes	
	Killed	Injured	Killed	Injured	Killed	Injured	Killed	Injured
2005	0	217	0	8	2	218	0	33
2004	1	293	1	24	0	288	0	37
2003	2	275	1	18	2	253	2	25
2002	2	303	1	32	1	253	1	32
2001	0	309	0	20	2	234	1	28
2000	0	369	0	22	0	315	0	28
1999	1	285	1	32	1	188	0	19
1998	1	338	0	28	0	272	0	41
1997	2	318	2	32	1	261	0	36
1996	0	323	0	40	0	267	0	41