

# Portales Community Report, 2005

## Demographics

In 2005, there were 11,054 licensed drivers in Portales. Of these, there were 5,625 females and 5,429 males. The population of Portales was 11,295. The total number of crashes in 2005 was 287, yielding a crash rate of 25 per thousand people (total number of crashes 287 divided by total population 11,295 times 1,000). The corresponding rate for the state was 25 per thousand people.

## General Crash Information

Since 1996 the number of crashes has no consistent pattern. Fatal and injury crashes have shown no consistent pattern since 1996. Belt usage (as a percentage) has increased from last year, while belt usage in crashes involving visible and incapacitating injuries also increased. There were no fatalities in the seven intersections with the most crashes in 2005. Of these intersections, six involve First Street.

## Alcohol-related Crash Information

Information about alcohol-involved crashes is included in all sections of this report. Of the 45 people convicted of DWI in Portales, 58 percent were first-time DWI convictions (number of first convictions 26 divided by the total number of people convicted 45 times 100). The corresponding percent for the state is 61.

## Crash Specifics

Crashes involving other vehicles were the most common class, accounting for 74 percent of all crashes. Passenger cars were the vehicle type most often involved in crashes, accounting for 41 percent of all vehicles in crashes. Pickups accounted for 33 percent of vehicles involved in crashes. Together these two vehicle types comprised 72 percent of the vehicles involved in injury crashes. The three most common top contributing factors were failing to yield, driver inattention, and following too close. There were no fatal crashes in 2005.

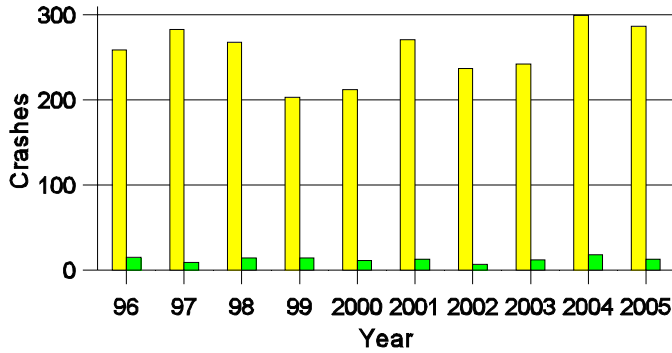
## People in Crashes

Overall, males were 52 percent of drivers in crashes, although they account for only 49 percent of licensed drivers in Portales. There were no pedestrians in crashes. In 2005, no 'teenagers' or young adults were killed in crashes in Portales. Statewide 17 percent of alcohol-involved drivers were under 21; in Portales 31 percent were under 21.

**Note:** The 1999 crash file contains 15% fewer crashes than the 1998 file. This may be due to problems implementing the new system after the old system failed, or to under reporting. Care should be used in interpreting differences between 1999 and other years in this report.

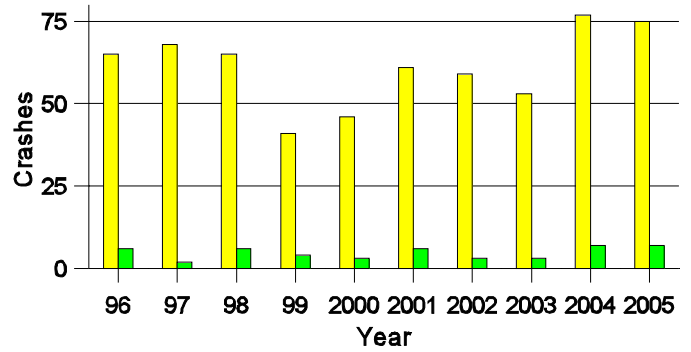
- Location of arrest/conviction was determined by police agency/court location, not driver residence.
- Crashes and drivers were counted by the city of occurrence/residence.
- Population was counted according to the Census definition.  
The city population data is from the most current 2005 estimates.
- Young adults are people between the ages of 20 and 24.
- 'Teenagers' are people between the ages of 15 and 19.
- Tables only include variable values for which there are data.

**Crashes in Portales  
by Alcohol Involvement**



■ All Crashes  
■ Alcohol-involved Crashes

**Fatal and Injury Crashes in Portales  
by Alcohol Involvement**



■ All Fatal and Injury Crashes  
■ Alcohol-involved Fatal and Injury Crashes

**Passenger Vehicle Seatbelt Usage and Injuries in Portales, 2003-2005**

Injury Level	2005		2004		2003	
	Total	No Belt	Total	No Belt	Total	No Belt
Killed	0	0	0	0	0	0
Incapacitating injury	1	0	12	1	5	0
Visible injury	9	1	14	3	20	5
Complaint of injury	69	2	66	5	44	3
Unhurt	518	5	565	17	438	12
<b>Total</b>	<b>597</b>	<b>8</b>	<b>657</b>	<b>26</b>	<b>507</b>	<b>20</b>

**The Seven Intersections in Portales with the Most Crashes, 2005**

Intersection	Crashes			People	
	Total	Fatal	Injury	Killed	Injured
18th St @ Ave D	4	0	1	0	1
1st St @ Abilene Ave	7	0	1	0	1
1st St @ Ave B	5	0	0	0	0
1st St @ Ave I	5	0	2	0	5
1st St @ Ave J	8	0	1	0	1
1st St @ Ave K	5	0	2	0	3
1st St @ Main Ave	7	0	0	0	0

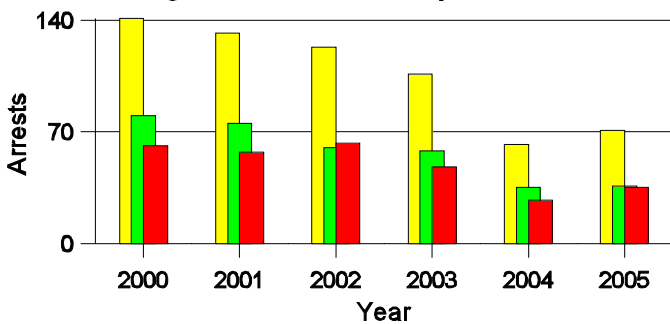
**Lifetime DWI Convictions for Drivers  
Convicted of DWI Violations in Portales, 2005**

Convictions	Since 2000	Since 1981
1st	32	26
2nd	10	13
3rd	3	5
4th	0	1
5th	0	0
6th	0	0
7th	0	0
8th	0	0
9th	0	0
10 or more	0	0
<b>Total</b>	<b>45</b>	<b>45</b>

Convictions are counts of people convicted of DWI by 7/2006 for violations in 2005 in Portales.  
Convictions are not comparable to arrests.

**DWI Arrests in Portales**

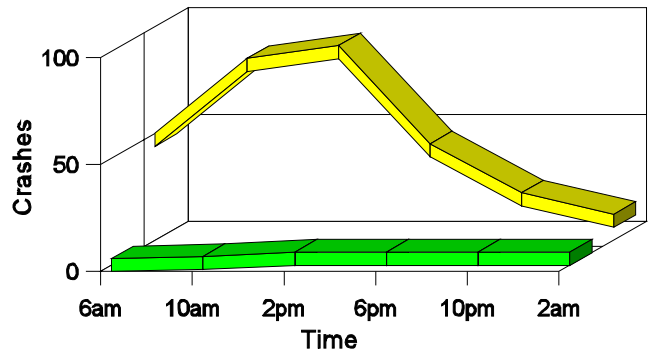
Showing First Arrests and Repeat Offenders



■ Total DWI Arrests  
■ First DWI Arrests  
■ Repeat DWI Arrests

**Crashes in Portales**

by Hour and Alcohol Involvement



■ All Crashes  
■ Alcohol-involved Crashes

**Crashes in Portales by Class, 2005**

Class	Crashes				People		
	Total	% of Total	Fatal	% of Fatal	Injury	Killed	Injured
Other vehicle	212	74	0	0	60	0	83
Fixed object	22	8	0	0	3	0	3
Parked vehicle	38	13	0	0	5	0	5
Overturn	5	2	0	0	4	0	5
Other non-collision	4	1	0	0	1	0	1
Pedalcyclist	3	1	0	0	2	0	2
Animal	3	1	0	0	0	0	0
<b>Total</b>	<b>287</b>	<b>100</b>	<b>0</b>	<b>0</b>	<b>75</b>	<b>0</b>	<b>99</b>

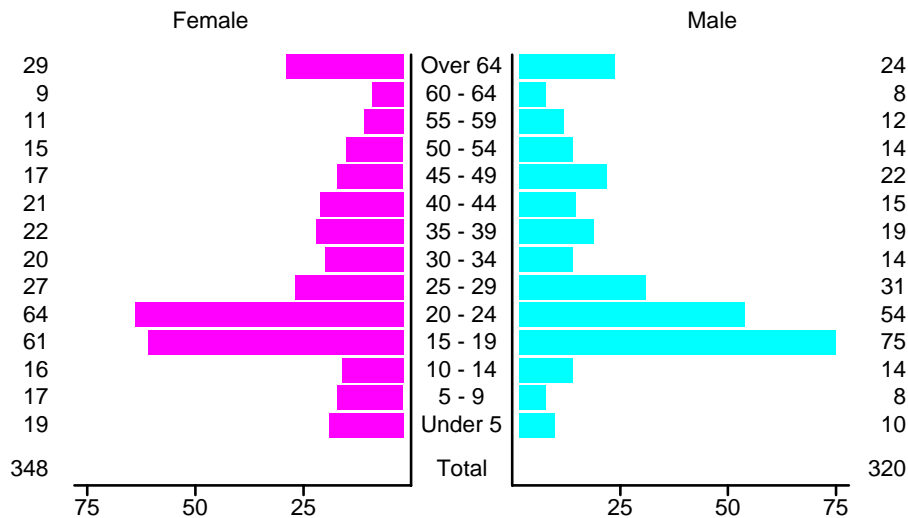
### Crashes in Portales by Vehicle Type, 2005

Vehicle Type	Vehicles				People		
	Total	% of Total	Fatal	% of Fatal	Injury	Killed	Injured
Passenger car	225	41	0	0	62	0	49
Pickup	182	33	0	0	42	0	20
Semi	16	3	0	0	4	0	1
Motorcycle	5	1	0	0	4	0	4
Pedalcyclist	3	1	0	0	2	0	2
Van/4 WD	69	13	0	0	19	0	13
Other	7	1	0	0	2	0	1
Unknown	39	7	0	0	10	0	9
<b>Total</b>	<b>546</b>	<b>100</b>	<b>0</b>	<b>0</b>	<b>145</b>	<b>0</b>	<b>99</b>

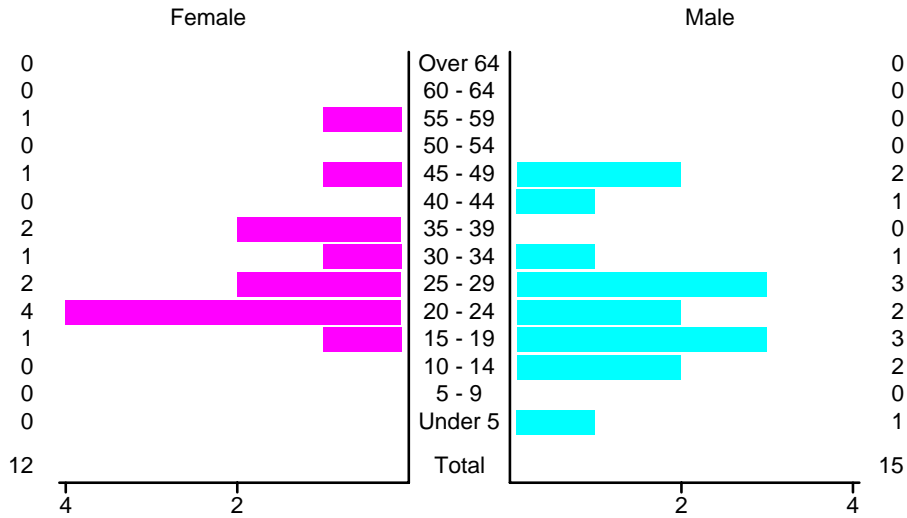
### Crashes in Portales by Top Contributing Factor, 2005

Contributing Factor	Crashes				People		
	Total	% of Total	Fatal	% of Fatal	Injury	Killed	Injured
Alcohol involvement	14	5	0	0	7	0	9
Red light running	18	6	0	0	8	0	10
Failing to yield	72	25	0	0	18	0	23
Excessive speed	17	6	0	0	5	0	5
Driving left of center	4	1	0	0	1	0	3
Following too close	43	15	0	0	13	0	15
Improper turning	24	8	0	0	10	0	15
Improper overtaking	1	0	0	0	1	0	2
Improper backing	18	6	0	0	1	0	1
Inop. traffic control	1	0	0	0	0	0	0
Mechanical defect	5	2	0	0	2	0	3
Driver inattention	50	17	0	0	8	0	12
Other	20	7	0	0	1	0	1
<b>Total</b>	<b>287</b>	<b>100</b>	<b>0</b>	<b>0</b>	<b>75</b>	<b>0</b>	<b>99</b>

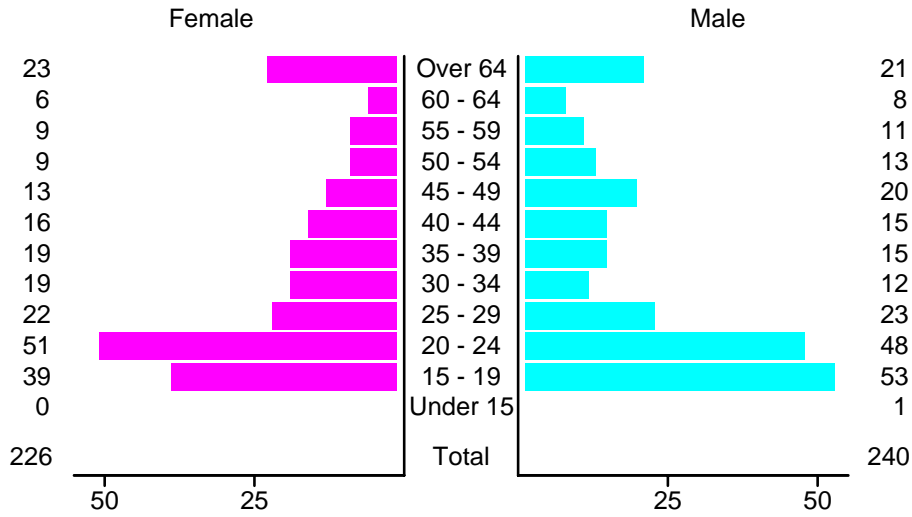
### People in Crashes by Age and Sex in Portales, 2005



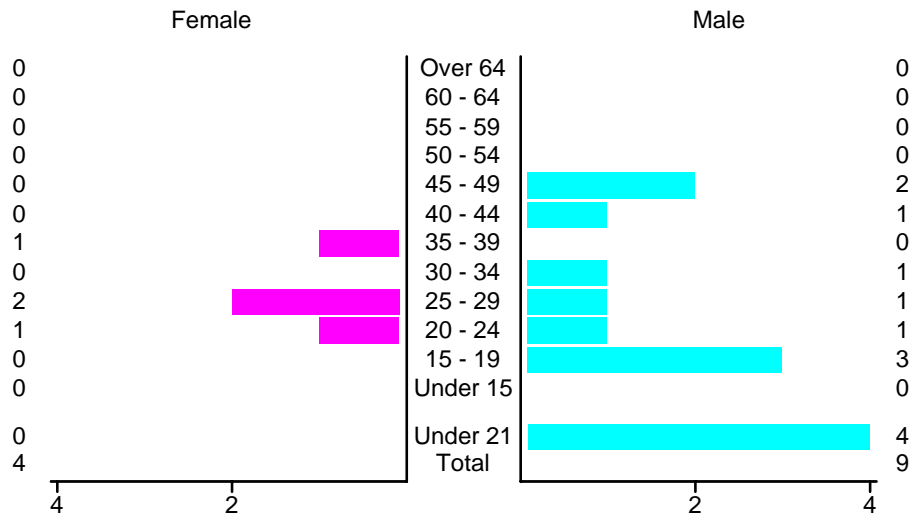
### People in Alcohol-Involved Crashes in Portales, 2005 by Age and Sex



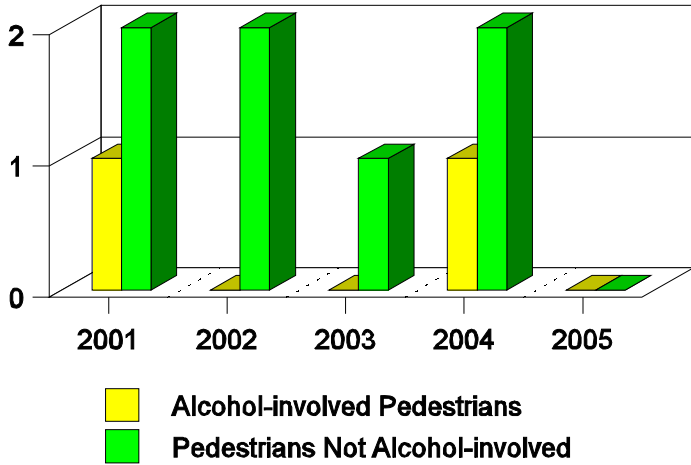
### Drivers in Crashes by Age and Sex in Portales, 2005



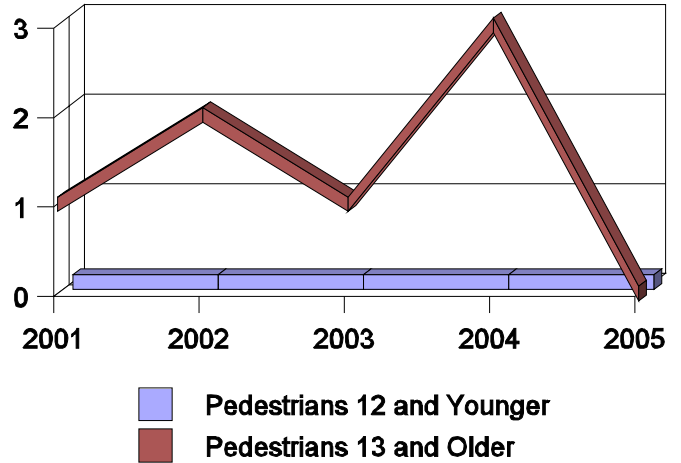
### Alcohol-Involved Drivers in Crashes in Portales, 2005 by Age and Sex



**Pedestrian in Crashes in Portales  
by Pedestrian Alcohol-involvement**



**Pedestrian in Crashes in Portales  
by Age Group**



**'Teenagers' and Young Adults in Crashes in Portales by Vehicle Type, 2005**

Vehicle	'Teenage' Drivers			Young Adult Drivers		
	Total	Fatal	Injury	Total	Fatal	Injury
Passenger car	43	0	14	59	0	14
Pickup	30	0	12	27	0	5
Semi	0	0	0	1	0	0
Motorcycle	0	0	0	1	0	1
Van/4 WD	9	0	2	7	0	1
Other	1	0	0	0	0	0
Unknown	9	0	4	4	0	1
<b>Total</b>	<b>92</b>	<b>0</b>	<b>32</b>	<b>99</b>	<b>0</b>	<b>22</b>

**'Teenagers' and Young Adults Killed and Injured in Crashes by Year in Portales, 1996-2005**

Year	'Teenagers'				Young Adults			
	All Crashes		Alcohol Crashes		All Crashes		Alcohol Crashes	
	Killed	Injured	Killed	Injured	Killed	Injured	Killed	Injured
2005	0	22	0	2	0	13	0	2
2004	0	30	0	2	0	11	0	1
2003	0	20	0	0	0	13	0	1
2002	0	19	0	3	1	18	1	2
2001	0	23	0	1	0	12	0	4
2000	0	14	0	1	0	15	0	1
1999	0	20	0	4	0	7	0	0
1998	0	28	0	5	0	13	0	4
1997	0	22	0	1	0	14	0	0
1996	0	21	0	3	0	11	0	1