

Quay County Report, 2005

Demographics

In 2005, there were 7,362 licensed drivers in Quay County. Of these, there were 3,693 females and 3,669 males. The population in Quay County was 9,259. The total number of crashes in 2005 was 193, yielding a crash rate of 21 per thousand people (the total number of crashes 193 divided by the population 9,259 multiplied by 1,000). The corresponding rate for the state was 25 per thousand people.

General Crash Information

Since 1996 the number of crashes has shown no consistent pattern. Fatal and injury crashes have also shown no consistent pattern since 1996. Belt usage (as a percentage) has decreased from last year, while belt usage in crashes involving visible and incapacitating injuries has increased.

Alcohol-related Crash Information

Information about alcohol-involved crashes is included in all sections of this report. Of the 43 people convicted of DWI in Quay County in 2005, 56 percent were first-time DWI convictions (number of first convictions 24 divided by the total number of people convicted 43 multiplied by 100). The corresponding percentage for the state was 61.

Crash Specifics

Crashes involving other vehicles were the most common class, accounting for 28 percent of all crashes. Crashes involving overturns, other vehicles, and a pedestrian resulted in fatalities. Passenger cars were the vehicle type most often involved in crashes, accounting for 34 percent of all vehicles in crashes. Pickups accounted for 25 percent of vehicles involved in crashes. Together these two vehicle types comprised 51 percent of the vehicles involved in injury crashes. The two most common top contributing factors were driver inattention and excessive speed. There were seven fatal crashes in 2005. The most common top contributing factor for the fatal crashes was driver inattention.

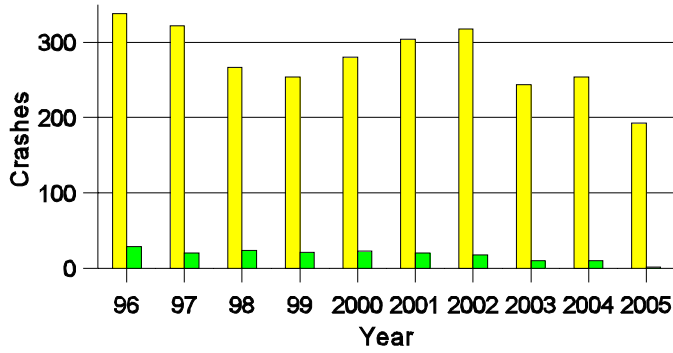
People in Crashes

Overall, males were 74 percent of drivers in crashes, although they account for only 50 percent of licensed drivers in Quay County. One pedestrian was involved in a crash. In 2005, one 'teenager' and no young adults were killed in crashes in Quay County. Statewide 17 percent of alcohol-involved drivers were under 21; in Quay County 50 (1 of 2) percent were under 21.

Note: The 1999 crash file contains 15% fewer crashes than the 1998 file. This may be due to problems implementing the new system after the old system failed, or to under reporting. Care should be used in interpreting differences between 1999 and other years in this report.

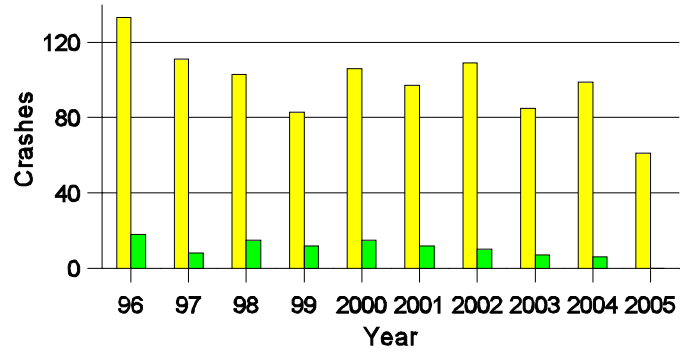
- Location of arrest/conviction was determined by police agency/court location, not driver residence.
- Crashes and drivers were counted by the city of occurrence/residence.
- Population was counted according to the Census definition, using 2005 estimates.
- Young adults are people between the ages of 20 and 24.
- 'Teenagers' are people between the ages of 15 and 19.
- Tables only include variable values for which there are data.

**Crashes in Quay County
by Alcohol Involvement**



All Crashes
 Alcohol-involved Crashes

**Fatal and Injury Crashes in Quay County
by Alcohol Involvement**



All Fatal and Injury Crashes
 Alcohol-involved Fatal and Injury Crashes

Passenger Vehicle Seatbelt Usage and Injuries in Quay County, 2003-2005

Injury Level	2005		2004		2003	
	Total	No Belt	Total	No Belt	Total	No Belt
Killed	5	2	7	5	9	5
Incapacitating injury	7	0	44	12	15	4
Visible injury	46	6	28	3	26	3
Complaint of injury	26	2	60	4	44	3
Unhurt	262	19	308	5	363	5
Total	346	29	447	29	457	20

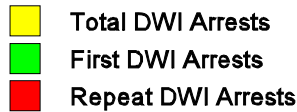
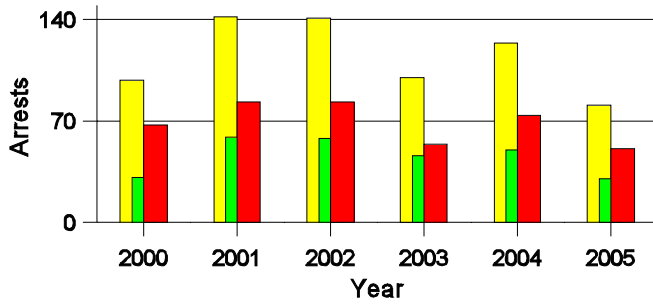
**Lifetime DWI Convictions for Drivers
Convicted of DWI Violations in Quay County, 2005**

Convictions	Since 2000	Since 1981
1st	34	24
2nd	6	11
3rd	3	5
4th	0	2
5th	0	0
6th	0	0
7th	0	0
8th	0	0
9th	0	0
10 or more	0	1
Total	43	43

Convictions are counts of people convicted of DWI by 7/2006 for violations in 2005 in Quay County.
 Convictions are not comparable to arrests.

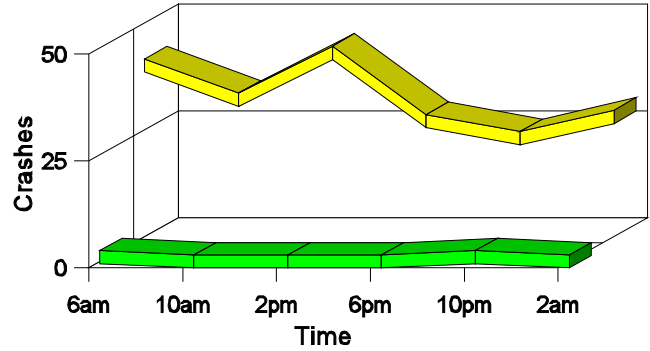
DWI Arrests in Quay County

Showing First Arrests and Repeat Offenders



Crashes in Quay County

by Hour and Alcohol Involvement



Crashes in Quay County by Class, 2005

Class	Crashes					People	
	Total	% of Total	Fatal	% of Fatal	Injury	Killed	Injured
Other vehicle	55	28	2	29	14	3	32
Pedestrian	1	1	1	14	0	1	0
Fixed object	41	21	0	0	9	0	11
Veh. on other roadway	1	1	0	0	1	0	2
Parked vehicle	9	5	0	0	1	0	3
Overturn	48	25	4	57	25	4	63
Other non-collision	17	9	0	0	2	0	2
Animal	17	9	0	0	2	0	2
Other object	4	2	0	0	0	0	0
Total	193	100	7	100	54	8	115

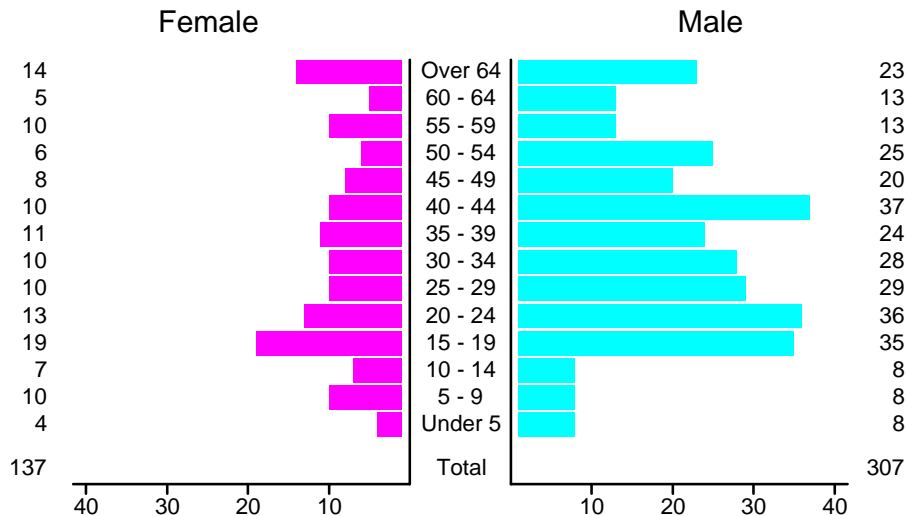
Crashes in Quay County by Vehicle Type, 2005

Vehicle Type	Vehicles					People	
	Total	% of Total	Fatal	% of Fatal	Injury	Killed	Injured
Passenger car	89	34	3	27	21	1	36
Pickup	65	25	2	18	15	2	29
Semi	63	24	2	18	21	1	20
Bus	1	0	0	0	0	0	0
Motorcycle	1	0	0	0	0	0	0
Pedestrian	1	0	1	9	0	1	0
Van/4 WD	39	15	3	27	13	3	30
Other	1	0	0	0	0	0	0
Unknown	5	2	0	0	0	0	0
Total	265	100	11	100	70	8	115

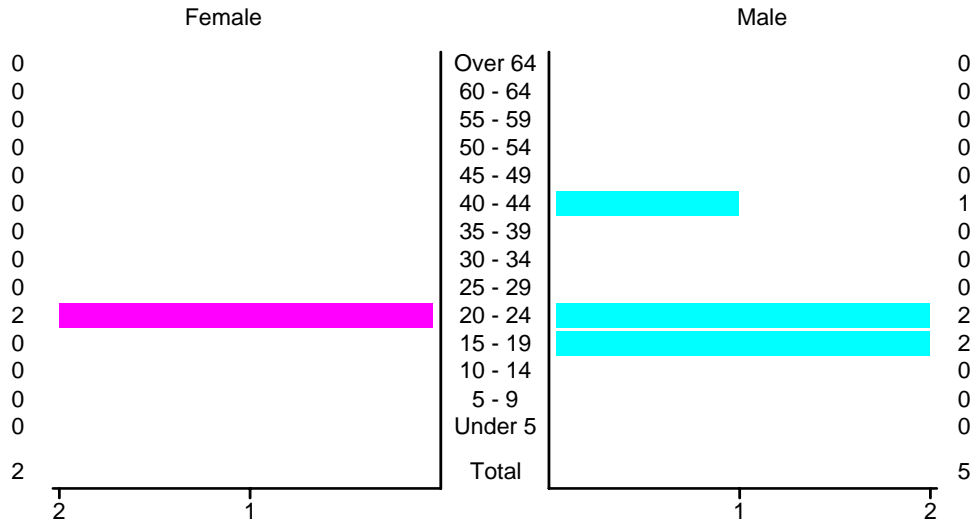
Crashes in Quay County by Top Contributing Factor, 2005

Contributing Factor	Crashes				People		
	Total	% of Total	Fatal	% of Fatal	Injury	Killed	Injured
Alcohol involvement	2	1	0	0	0	0	0
Red light running	7	4	0	0	4	0	6
Failing to yield	10	5	0	0	2	0	4
Excessive speed	41	21	2	29	18	3	50
Driving left of center	9	5	0	0	3	0	3
Following too close	7	4	0	0	5	0	10
Improper turning	4	2	0	0	1	0	1
Improper overtaking	2	1	0	0	1	0	3
Improper backing	4	2	0	0	0	0	0
Mechanical defect	25	13	1	14	4	1	12
Driver inattention	43	22	3	43	11	3	19
Other	39	20	1	14	5	1	7
Total	193	100	7	100	54	8	115

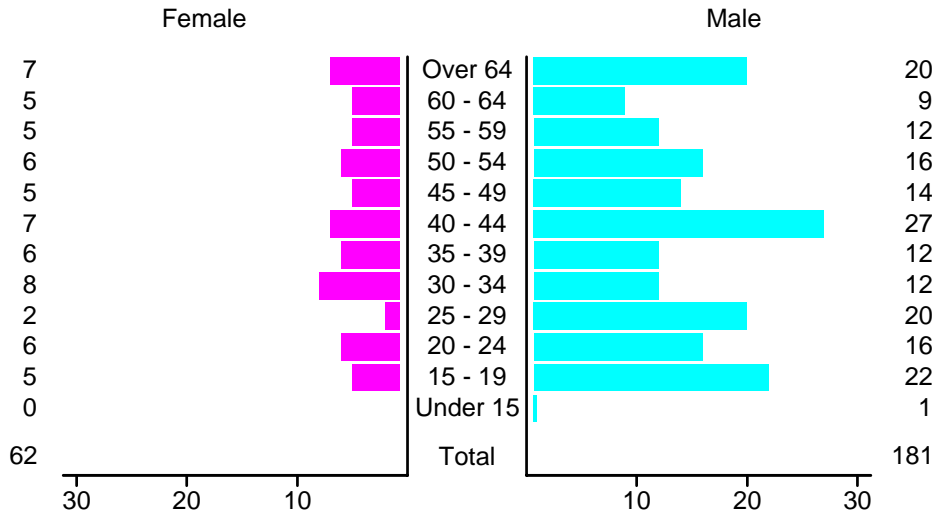
People in Crashes by Age and Sex in Quay County, 2005



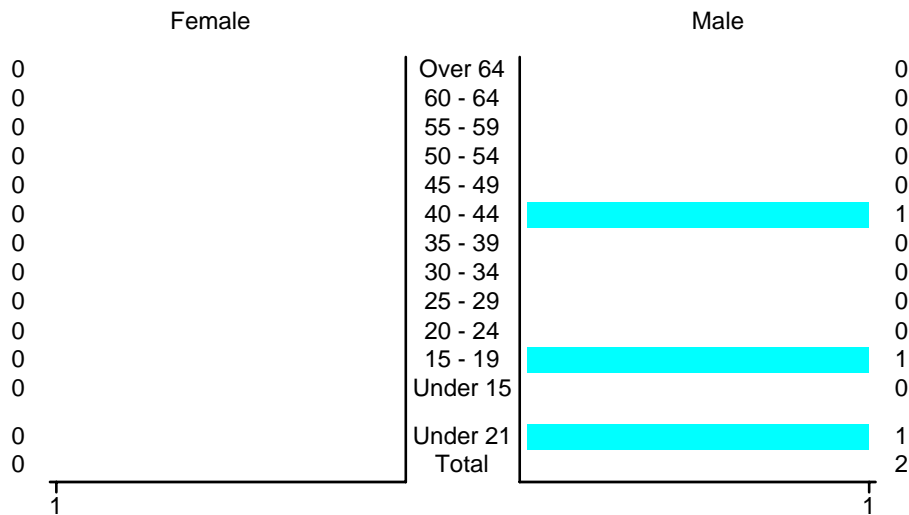
**People in Alcohol-Involved Crashes in Quay County, 2005
by Age and Sex**



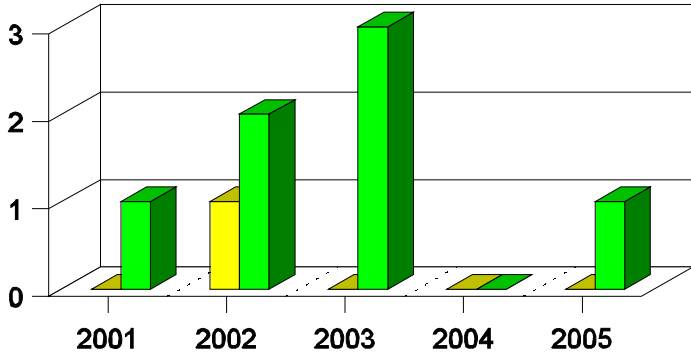
Drivers in Crashes by Age and Sex in Quay County, 2005



**Alcohol-Involved Drivers in Crashes in Quay County, 2005
by Age and Sex**

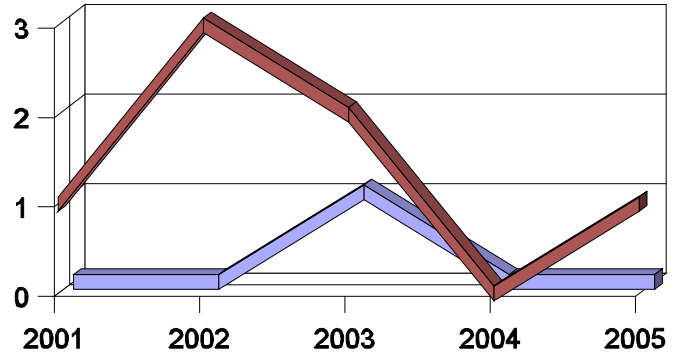


**Pedestrian Crashes in Quay County
by Pedestrian Alcohol Involvement**



■ Alcohol-involved Pedestrians
■ Pedestrians Not Alcohol-involved

**Pedestrian Crashes in Quay County
by Age Group**



■ Pedestrians 12 and Younger
■ Pedestrians 13 and Older

'Teenagers' and Young Adults in Crashes in Quay County by Vehicle Type, 2005

Vehicle	'Teenage' Drivers			Young Adult Drivers		
	Total	Fatal	Injury	Total	Fatal	Injury
Passenger car	15	0	4	8	0	4
Pickup	11	1	2	4	0	1
Semi	0	0	0	3	0	1
Van/4 WD	1	0	0	7	0	5
Total	27	1	6	22	0	11

'Teenagers' and Young Adults in Crashes in Quay County, 1996-2005

Year	'Teenagers'				Young Adults			
	All Crashes		Alcohol Crashes		All Crashes		Alcohol Crashes	
	Killed	Injured	Killed	Injured	Killed	Injured	Killed	Injured
2005	1	10	0	0	0	21	0	0
2004	1	34	0	3	1	18	0	1
2003	1	10	1	1	0	9	0	3
2002	2	13	0	0	3	14	2	2
2001	1	23	0	8	1	17	0	4
2000	1	18	1	3	0	17	0	4
1999	1	22	1	3	1	14	0	3
1998	1	30	0	2	1	12	0	2
1997	1	25	0	0	1	24	0	3
1996	3	47	0	7	2	29	1	4