

Silver City Community Report, 2005

Demographics

In 2005, there were 14,191 licensed drivers in Silver City. Of these, there were 7,210 females and 6,981 males. The population of Silver City was 9,999. The total number of crashes in 2005 was 459, yielding a crash rate of 46 per thousand people (total number of crashes 459 divided by total population 9,999 times 1,000). The corresponding rate for the state was 25 per thousand people.

General Crash Information

Since 1996 the number of crashes has shown no consistent pattern. Fatal and injury crashes have also shown no consistent pattern since 1996. Belt usage (as a percentage) increased from last year, while belt usage in crashes involving visible and incapacitating injuries has also increased. There were no fatalities in the seven intersections with the most crashes in 2005. Of these intersections, five involve Silver Heights Blvd.

Alcohol-related Crash Information

Information about alcohol-involved crashes is included in all sections of this report. Of the 39 people convicted of DWI in Silver City, 62 percent were first-time DWI convictions (number of first convictions 24 divided by the total number of people convicted 39 times 100). The corresponding percent for the state is 61.

Crash Specifics

Crashes involving other vehicles were the most common class, accounting for 70 percent of all crashes. Passenger cars were the vehicle type most often involved in crashes, accounting for 44 percent of all vehicles in crashes. Pickups accounted for 31 percent of vehicles involved in crashes. Together these two vehicle types comprised 72 percent of the vehicles involved in injury crashes. The three most common top contributing factors were driver inattention, following too close, and failing to yield. There were no fatal crashes in 2005.

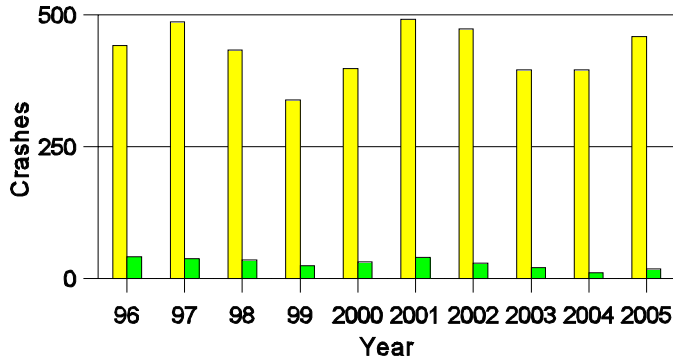
People in Crashes

Overall, males were 53 percent of drivers in crashes, and they also account for 49 percent of licensed drivers in Silver City. Six pedestrians were involved in crashes. No 'teenagers' or young adults were killed in crashes. Statewide 17 percent of alcohol-involved drivers were under 21; in Silver City 29 percent were under 21.

Note: The 1999 crash file contains 15% fewer crashes than the 1998 file. This may be due to problems implementing the new system after the old system failed, or to under reporting. Care should be used in interpreting differences between 1999 and other years in this report.

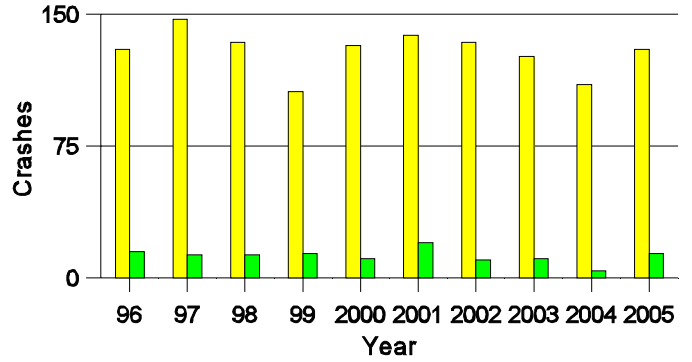
- Location of arrest/conviction was determined by police agency/court location, not driver residence.
- Crashes and drivers were counted by the city of occurrence/residence.
- Population was counted according to the Census definition. The city population data is from the most current 2005 estimates.
- Young adults are people between the ages of 20 and 24.
- 'Teenagers' are people between the ages of 15 and 19.
- Tables only include variable values for which there are data.

Crashes in Silver City by Alcohol Involvement



■ All Crashes
■ Alcohol-involved Crashes

Fatal and Injury Crashes in Silver City by Alcohol Involvement



■ All Fatal and Injury Crashes
■ Alcohol-involved Fatal and Injury Crashes

Passenger Vehicle Seatbelt Usage and Injuries in Silver City, 2003-2005

Injury Level	2005		2004		2003	
	Total	No Belt	Total	No Belt	Total	No Belt
Killed	0	0	0	0	0	0
Incapacitating injury	11	0	8	3	7	2
Visible injury	22	2	26	3	21	2
Complaint of injury	117	0	97	1	130	7
Unhurt	891	8	726	6	757	8
Total	1,041	10	857	13	915	19

The Seven Intersections in Silver City with the Most Crashes, 2005

Intersection	Crashes			People	
	Total	Fatal	Injury	Killed	Injured
14th St @ Silver Heights Blvd	15	0	3	0	3
32nd St @ Pinos Altos Rd	8	0	3	0	4
32nd St By-pass @ Silver Heights Blvd	9	0	2	0	6
Hudson St @ Ridge Rd	9	0	2	0	4
Hudson St @ Silver Heights Blvd	24	0	11	0	12
Memory Ln @ Silver Heights Blvd	24	0	5	0	7
Pinos Altos Rd @ Silver Heights Blvd	23	0	7	0	13

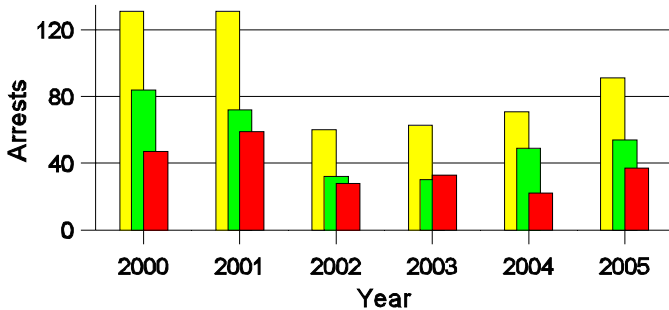
**Lifetime DWI Convictions for Drivers
Convicted of DWI Violations in Silver City, 2005**

Convictions	Since 2000	Since 1981
1st	31	24
2nd	8	10
3rd	0	4
4th	0	1
5th	0	0
6th	0	0
7th	0	0
8th	0	0
9th	0	0
10 or more	0	0
Total	39	39

Convictions are counts of people convicted of DWI by 7/2006 for violations in 2005 in Silver City.
Convictions are not comparable to arrests.

DWI Arrests in Silver City

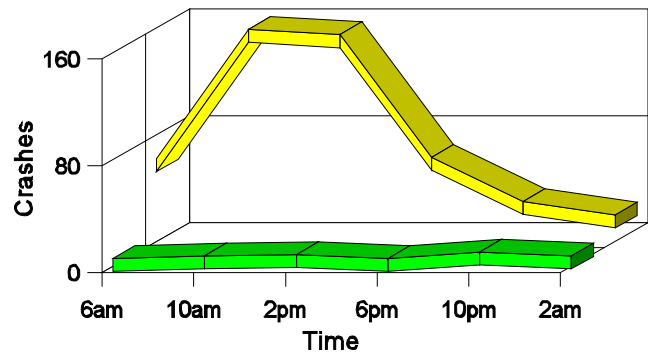
Showing First Arrests and Repeat Offenders



■ Total DWI Arrests
■ First DWI Arrests
■ Repeat DWI Arrests

Crashes in Silver City

by Hour and Alcohol Involvement



■ All Crashes
■ Alcohol-involved Crashes

Crashes in Silver City by Class, 2005

Class	Crashes				People		
	Total	% of Total	Fatal	% of Fatal	Injury	Killed	Injured
Other vehicle	320	70	0	0	98	0	141
Pedestrian	6	1	0	0	6	0	6
Fixed object	33	7	0	0	7	0	11
Parked vehicle	55	12	0	0	5	0	6
Overturn	8	2	0	0	5	0	5
Pedalcyclist	8	2	0	0	8	0	8
Animal	28	6	0	0	1	0	1
Other object	1	0	0	0	0	0	0
Total	459	100	0	0	130	0	178

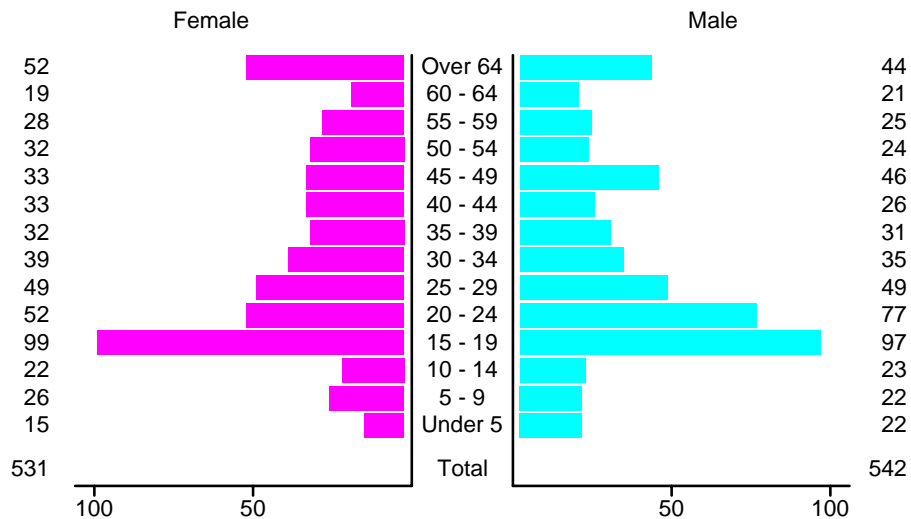
Crashes in Silver City by Vehicle Type, 2005

Vehicle Type	Vehicles					People	
	Total	% of Total	Fatal	% of Fatal	Injury	Killed	Injured
Passenger car	383	44	0	0	115	0	80
Pickup	266	31	0	0	71	0	44
Semi	5	1	0	0	1	0	2
Bus	1	0	0	0	0	0	0
Motorcycle	5	1	0	0	3	0	3
Pedalcyclist	8	1	0	0	8	0	8
Pedestrian	6	1	0	0	6	0	6
Van/4 WD	144	17	0	0	47	0	33
Other	5	1	0	0	3	0	1
Unknown	42	5	0	0	4	0	1
Total	865	100	0	0	258	0	178

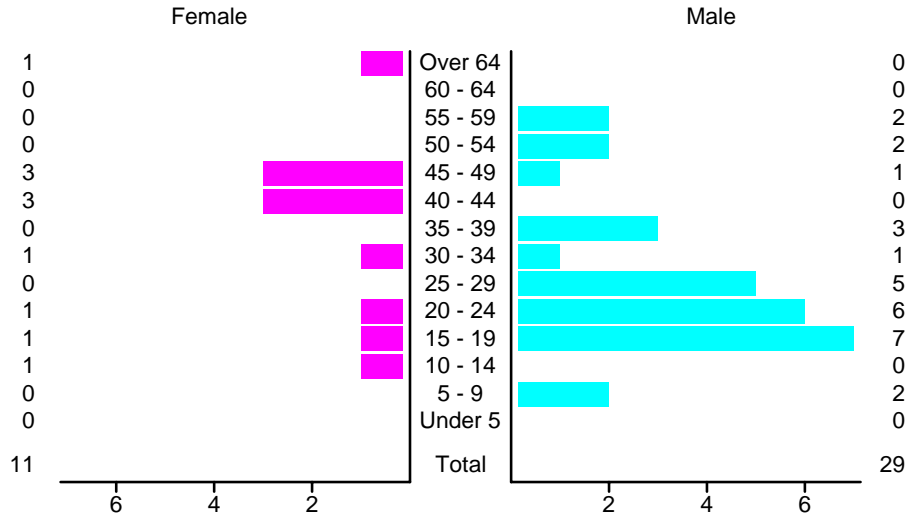
Crashes in Silver City by Top Contributing Factor, 2005

Contributing Factor	Crashes					People	
	Total	% of Total	Fatal	% of Fatal	Injury	Killed	Injured
Alcohol involvement	20	4	0	0	15	0	20
Red light running	37	8	0	0	14	0	22
Failing to yield	76	17	0	0	25	0	38
Excessive speed	30	7	0	0	10	0	15
Driving left of center	4	1	0	0	0	0	0
Following too close	97	21	0	0	29	0	38
Improper turning	20	4	0	0	4	0	4
Improper overtaking	3	1	0	0	0	0	0
Improper backing	28	6	0	0	2	0	2
Inop. traffic control	1	0	0	0	0	0	0
Mechanical defect	4	1	0	0	1	0	2
Driver inattention	97	21	0	0	26	0	33
Improper driving	1	0	0	0	1	0	1
Other	41	9	0	0	3	0	3
Total	459	100	0	0	130	0	178

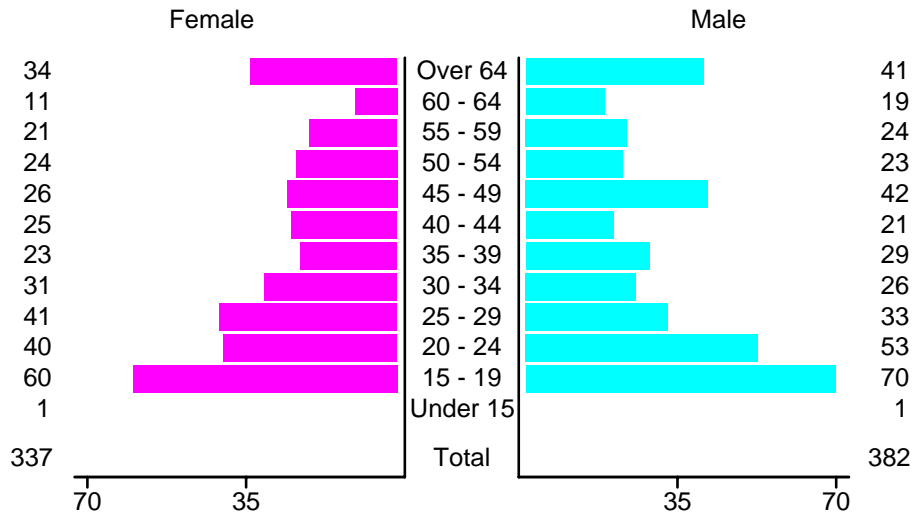
People in Crashes by Age and Sex in Silver City, 2005



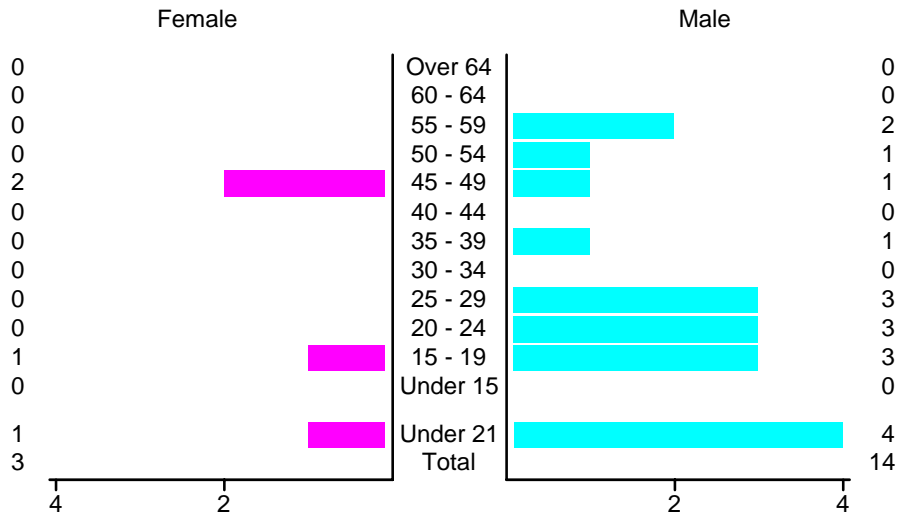
People in Alcohol-Involved Crashes in Silver City, 2005 by Age and Sex



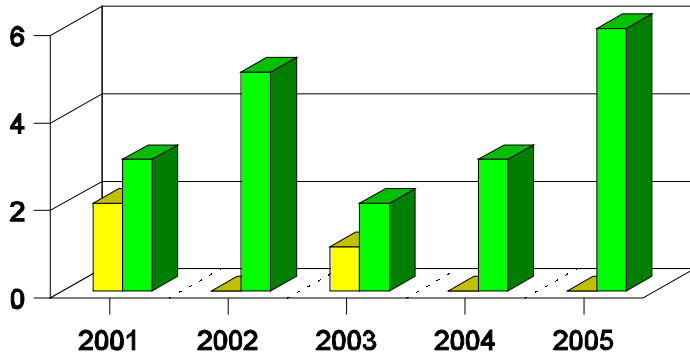
Drivers in Crashes by Age and Sex in Silver City, 2005



Alcohol-Involved Drivers in Crashes in Silver City, 2005 by Age and Sex

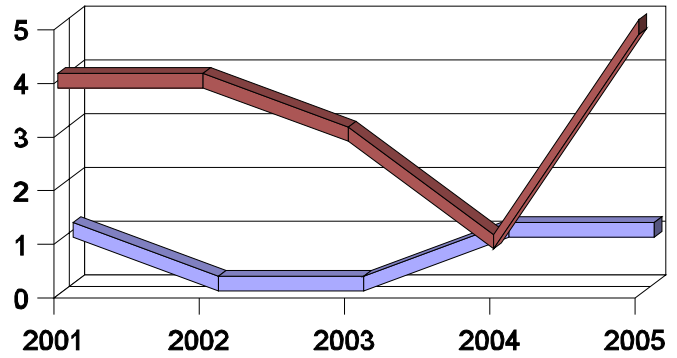


**Pedestrian in Crashes in Silver City
by Pedestrian Alcohol-involvement**



■ Alcohol-involved Pedestrians
■ Pedestrians Not Alcohol-involved

**Pedestrian in Crashes in Silver City
by Age Group**



■ Pedestrians 12 and Younger
■ Pedestrians 13 and Older

'Teenagers' and Young Adults in Crashes in Silver City by Vehicle Type, 2005

Vehicle	'Teenage' Drivers			Young Adult Drivers		
	Total	Fatal	Injury	Total	Fatal	Injury
Passenger car	72	0	19	53	0	17
Pickup	38	0	12	30	0	10
Motorcycle	2	0	1	1	0	1
Pedalcyclist	1	0	1	3	0	3
Pedestrian	2	0	2	0	0	0
Van/4 WD	17	0	7	7	0	4
Other	1	0	1	0	0	0
Unknown	1	0	0	2	0	1
Total	134	0	43	96	0	36

'Teenagers' and Young Adults Killed and Injured in Crashes by Year in Silver City, 1996-2005

Year	'Teenagers'				Young Adults			
	All Crashes		Alcohol Crashes		All Crashes		Alcohol Crashes	
	Killed	Injured	Killed	Injured	Killed	Injured	Killed	Injured
2005	0	30	0	2	0	20	0	4
2004	0	18	0	0	0	15	0	2
2003	0	24	0	1	0	31	0	1
2002	0	32	0	1	0	20	0	0
2001	0	29	0	2	0	29	0	7
2000	0	32	0	4	0	22	0	4
1999	0	21	0	3	0	24	0	7
1998	0	40	0	4	0	19	0	4
1997	0	44	0	4	0	30	0	4
1996	0	35	0	4	1	22	1	4