

Sunland Park Community Report, 2005

Demographics

In 2005, there were 6,954 licensed drivers in Sunland Park. Of these, there were 3,140 females and 3,814 males. The population of Sunland Park was 14,089. The total number of crashes in 2005 was 77, yielding a crash rate of five per thousand people (total number of crashes 77 divided by total population 14,089 times 1,000). The corresponding rate for the state was 25 per thousand people.

General Crash Information

Since 2002 the number of crashes has shown a decreasing trend. Fatal and injury crashes have shown no consistent pattern since 1996. Belt usage (as a percentage) decreased from last year, while belt usage in crashes involving visible and incapacitating injuries increased. There were no fatalities in the seven intersections with the most crashes in 2005. Of these intersections, three involve McNutt Highway.

Alcohol-related Crash Information

Information about alcohol-involved crashes is included in all sections of this report. Of the 40 people convicted of DWI in Sunland Park, 73 percent were first-time DWI convictions (number of first convictions 29 divided by the total number of people convicted 40 times 100). The corresponding percent for the state is 61.

Crash Specifics

Crashes involving other vehicles were the most common class, accounting for 69 percent of all crashes. Passenger cars were the vehicle type most often involved in crashes, accounting for 51 percent of all vehicles in crashes. Pickups accounted for 20 percent of vehicles involved in crashes. Together these two vehicle types comprised 79 percent of the vehicles involved in injury crashes. The two most common top contributing factors were driver inattention and following too close. There were no fatal crashes in 2005.

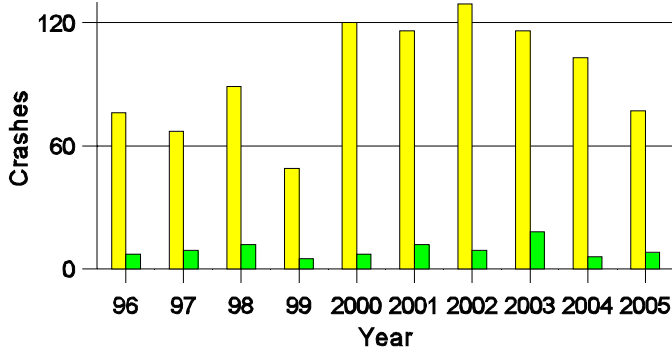
People in Crashes

Overall, males were 56 percent of drivers in crashes, although they account for 55 percent of licensed drivers in Sunland Park. No pedestrians were involved in crashes this year. In 2005, no 'teenagers' or young adults were killed in Sunland Park. Statewide 17 percent of alcohol-involved drivers were under 21; in Sunland Park 40 percent (2 of 5) were under 21.

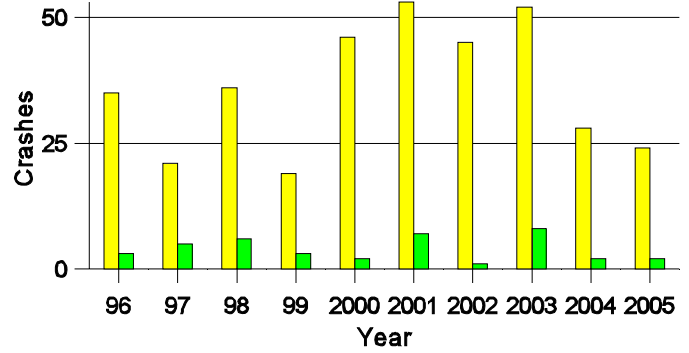
Note: The 1999 crash file contains 15% fewer crashes than the 1998 file. This may be due to problems implementing the new system after the old system failed, or to under reporting. Care should be used in interpreting differences between 1999 and other years in this report.

- Location of arrest/conviction was determined by police agency/court location, not driver residence.
- Crashes and drivers were counted by the city of occurrence/residence.
- Population was counted according to the Census definition.
The city population data is from the most current 2005 estimates.
- Young adults are people between the ages of 20 and 24.
- 'Teenagers' are people between the ages of 15 and 19.
- Tables only include variable values for which there are data.

**Crashes in Sunland Park
by Alcohol Involvement**



**Fatal and Injury Crashes in Sunland Park
by Alcohol Involvement**



Passenger Vehicle Seatbelt Usage and Injuries in Sunland Park, 2003-2005

Injury Level	2005		2004		2003	
	Total	No Belt	Total	No Belt	Total	No Belt
Killed	0	0	0	0	0	0
Incapacitating injury	3	0	7	0	7	1
Visible injury	7	0	7	1	15	0
Complaint of injury	18	0	31	0	54	2
Unhurt	114	1	209	0	232	0
Total	142	1	254	1	308	3

The Seven Intersections in Sunland Park with the Most Crashes, 2005

Intersection	Crashes			People	
	Total	Fatal	Injury	Killed	Injured
Country Club Rd @ Crawford Rd	2	0	0	0	0
Country Club Rd @ McNutt Hwy	8	0	4	0	6
Doniphan Dr @ Race Track Rd	2	0	0	0	0
Edgewood St @ McNutt Hwy	3	0	0	0	0
Futurity Dr @ Race Track Rd	2	0	0	0	0
Futurity Dr @ Sunland Park Entrance	2	0	1	0	3
McNutt Hwy @ Posey Rd	6	0	3	0	3

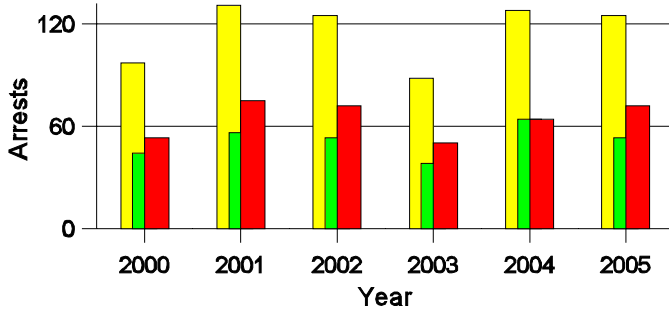
**Lifetime DWI Convictions for Drivers
Convicted of DWI Violations in Sunland Park, 2005**

Convictions	Since 2000	Since 1981
1st	34	29
2nd	5	8
3rd	1	3
4th	0	0
5th	0	0
6th	0	0
7th	0	0
8th	0	0
9th	0	0
10 or more	0	0
Total	40	40

Convictions are counts of people convicted of DWI by 7/2006 for violations in 2005 in Sunland Park.
Convictions are not comparable to arrests.

DWI Arrests in Sunland Park

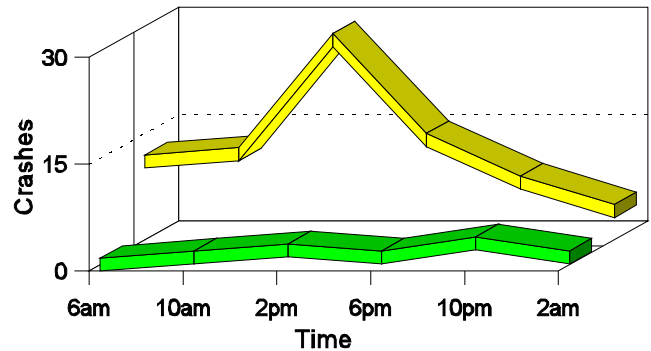
Showing First Arrests and Repeat Offenders



■ Total DWI Arrests
■ First DWI Arrests
■ Repeat DWI Arrests

Crashes in Sunland Park

by Hour and Alcohol Involvement



■ All Crashes
■ Alcohol-involved Crashes

Crashes in Sunland Park by Class, 2005

Class	Crashes				People		
	Total	% of Total	Fatal	% of Fatal	Injury	Killed	Injured
Other vehicle	53	69	0	0	20	0	30
Fixed object	9	12	0	0	3	0	3
Parked vehicle	12	16	0	0	0	0	0
Overturn	2	3	0	0	1	0	1
Pedalcyclist	1	1	0	0	0	0	0
Total	77	100	0	0	24	0	34

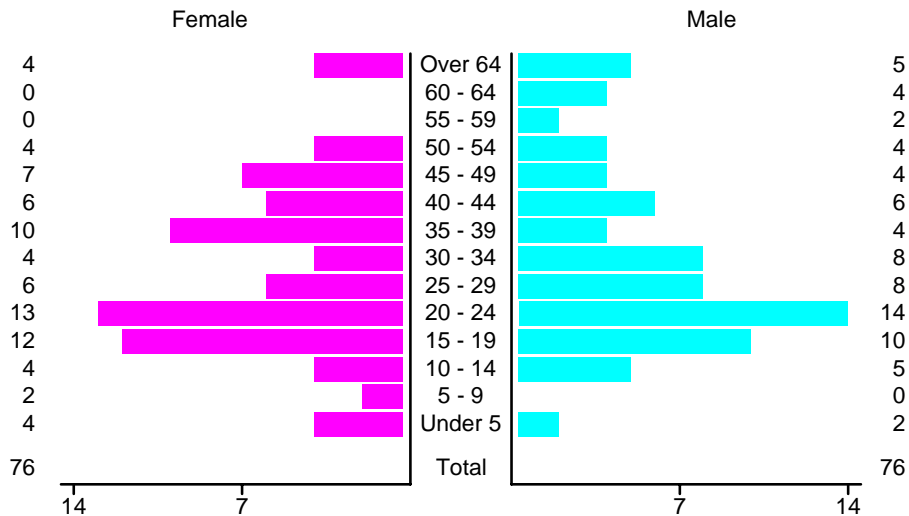
Crashes in Sunland Park by Vehicle Type, 2005

Vehicle Type	Vehicles					People	
	Total	% of Total	Fatal	% of Fatal	Injury	Killed	Injured
Passenger car	75	51	0	0	31	0	23
Pickup	29	20	0	0	6	0	4
Semi	2	1	0	0	1	0	0
Bus	1	1	0	0	0	0	0
Pedalcyclist	1	1	0	0	0	0	0
Van/4 WD	23	16	0	0	5	0	4
Other	2	1	0	0	0	0	0
Unknown	14	10	0	0	4	0	3
Total	147	100	0	0	47	0	34

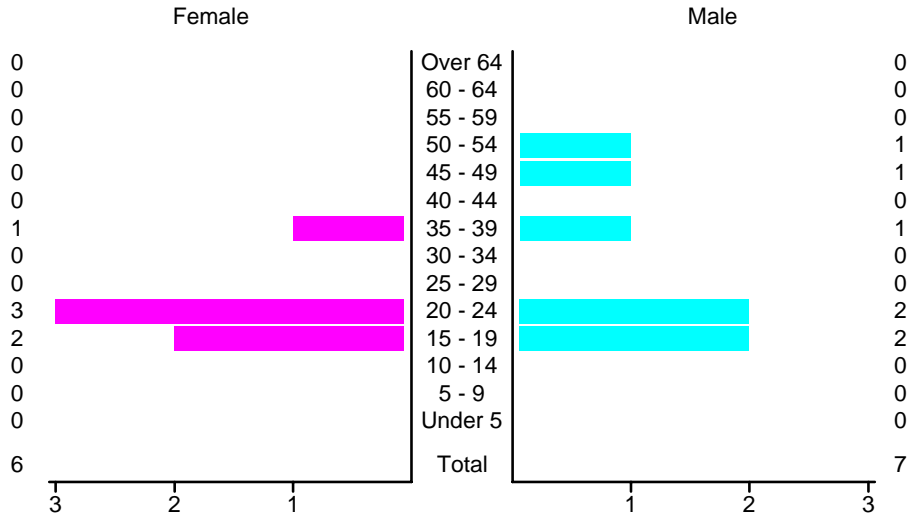
Crashes in Sunland Park by Top Contributing Factor, 2005

Contributing Factor	Crashes					People	
	Total	% of Total	Fatal	% of Fatal	Injury	Killed	Injured
Alcohol involvement	9	12	0	0	2	0	2
Red light running	4	5	0	0	2	0	4
Failing to yield	9	12	0	0	5	0	6
Excessive speed	5	6	0	0	3	0	4
Driving left of center	1	1	0	0	0	0	0
Following too close	12	16	0	0	4	0	8
Improper turning	3	4	0	0	1	0	2
Improper backing	1	1	0	0	0	0	0
Mechanical defect	3	4	0	0	1	0	1
Driver inattention	28	36	0	0	5	0	6
Other	2	3	0	0	1	0	1
Total	77	100	0	0	24	0	34

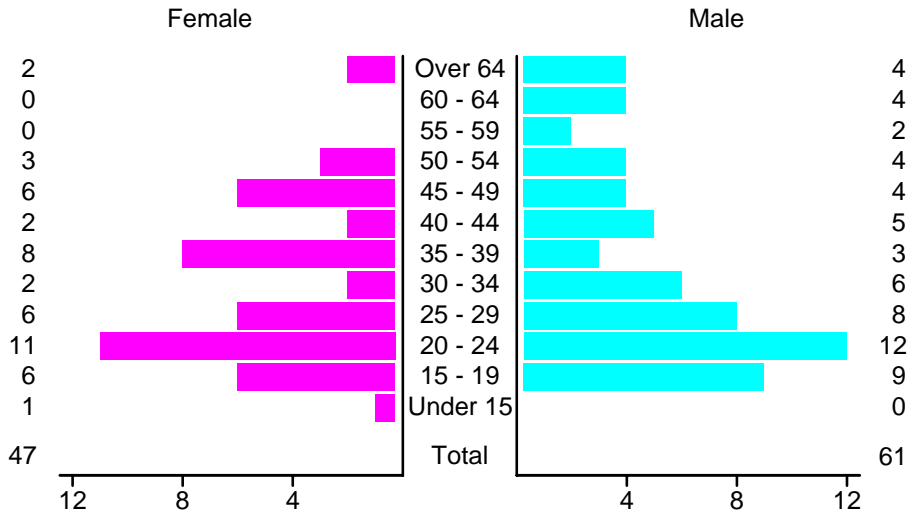
People in Crashes by Age and Sex in Sunland Park, 2005



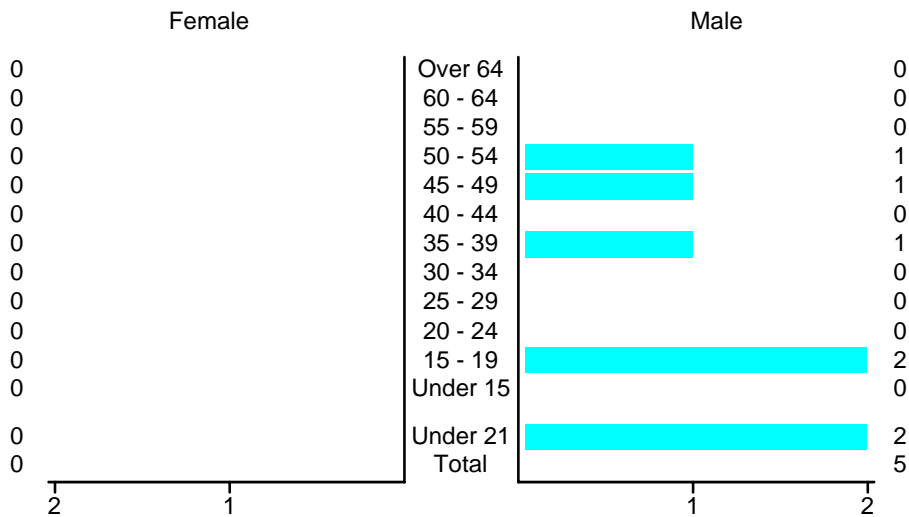
**People in Alcohol-Involved Crashes in Sunland Park, 2005
by Age and Sex**



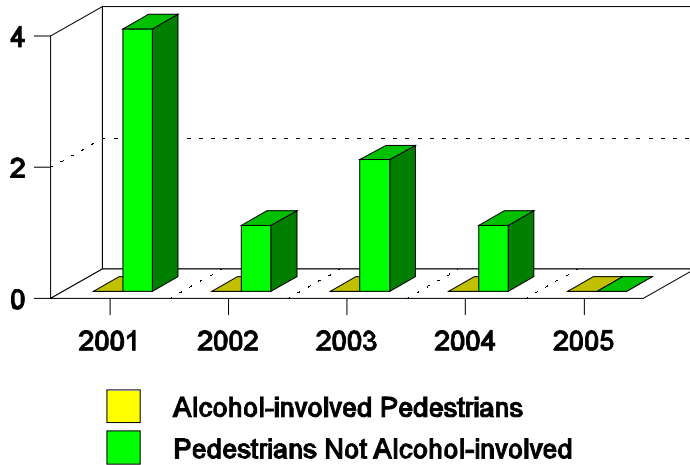
Drivers in Crashes by Age and Sex in Sunland Park, 2005



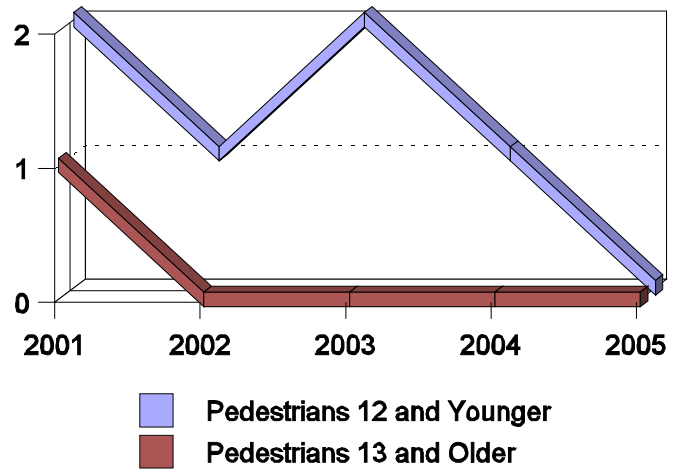
**Alcohol-Involved Drivers in Crashes in Sunland Park, 2005
by Age and Sex**



**Pedestrian in Crashes in Sunland Park
by Pedestrian Alcohol-involvement**



**Pedestrian in Crashes in Sunland Park
by Age Group**



'Teenagers' and Young Adults in Crashes in Sunland Park by Vehicle Type, 2005

Vehicle	'Teenage' Drivers			Young Adult Drivers		
	Total	Fatal	Injury	Total	Fatal	Injury
Passenger car	13	0	5	18	0	12
Pickup	0	0	0	4	0	1
Van/4 WD	2	0	0	1	0	0
Total	15	0	5	23	0	13

'Teenagers' and Young Adults Killed and Injured in Crashes by Year in Sunland Park, 1996-2005

Year	'Teenagers'				Young Adults			
	All Crashes		Alcohol Crashes		All Crashes		Alcohol Crashes	
	Killed	Injured	Killed	Injured	Killed	Injured	Killed	Injured
2005	0	2	0	0	0	13	0	2
2004	0	11	0	2	0	3	0	0
2003	0	9	0	0	0	14	0	5
2002	1	12	0	0	0	12	0	0
2001	0	11	0	2	0	15	0	3
2000	0	13	0	0	0	5	0	1
1999	0	1	0	0	0	1	0	1
1998	0	10	0	1	0	9	0	2
1997	0	4	0	1	0	5	0	2
1996	0	8	0	0	0	5	0	1