

# Taos Community Report, 2005

## Demographics

In 2005, there were 8,812 licensed drivers in Taos. Of these, there were 4,572 females and 4,240 males. The population of Taos was 5,126. The total number of crashes in 2005 was 389, yielding a crash rate of 76 per thousand people (total number of crashes 389 divided by total population 5,126 times 1,000). The corresponding rate for the state was 25 per thousand people.

## General Crash Information

Since 1996 the number of crashes has shown no consistent pattern. Fatal and injury crashes have also shown no consistent pattern since 1996. Belt usage (as a percentage) has increased from last year, while belt usage in crashes involving visible and incapacitating injuries have also increased. There were no fatalities in the seven intersections with the most crashes in 2005. Of these intersections, five involve Paseo Del Pueblo Sur.

## Alcohol-related Crash Information

Information about alcohol-involved crashes is included in all sections of this report. Of the 25 people convicted of DWI in Taos, 72 percent were first-time DWI convictions (number of first convictions 18 divided by the total number of people convicted 25 times 100). The corresponding percent for the state is 61.

## Crash Specifics

Crashes involving other vehicles were the most common class, accounting for 80 percent of all crashes. Crashes involving an other vehicle and a pedestrian resulted in fatalities. Passenger cars were the vehicle type most often involved in crashes, accounting for 49 percent of all vehicles in crashes. Pickups accounted for 23 percent of vehicles involved in crashes. Together these two vehicle types comprised 73 percent of the vehicles involved in injury crashes. The three most common top contributing factors were following too close, failing to yield, and driver inattention. There were two fatal crashes in 2005. The top contributing factors for the fatal crashes were alcohol involvement and failing to yield.

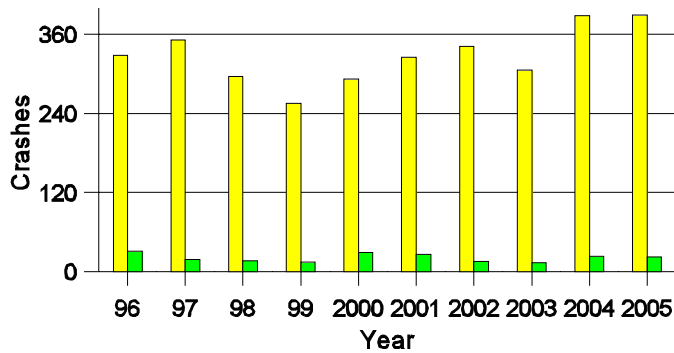
## People in Crashes

Overall, males were 54 percent of drivers in crashes, although they account for only 48 percent of licensed drivers in Taos. Three pedestrians were involved in crashes. In 2005, no 'teenagers' or young adults were killed in crashes. Statewide 17 percent of alcohol-involved drivers were under 21; in Taos 11 percent were under 21.

**Note:** The 1999 crash file contains 15% fewer crashes than the 1998 file. This may be due to problems implementing the new system after the old system failed, or to under reporting. Care should be used in interpreting differences between 1999 and other years in this report.

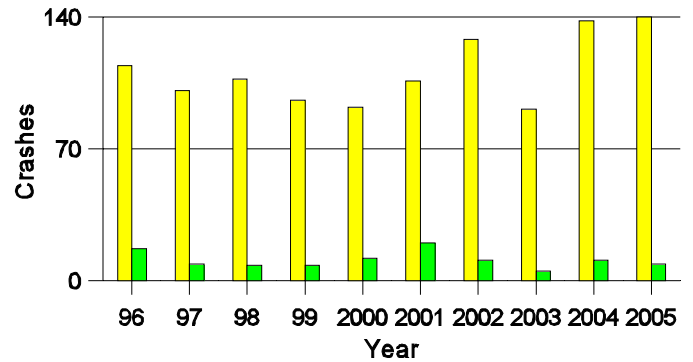
- Location of arrest/conviction was determined by police agency/court location, not driver residence.
- Crashes and drivers were counted by the city of occurrence/residence.
- Population was counted according to the Census definition.  
The city population data is from the most current 2005 estimates.
- Young adults are people between the ages of 20 and 24.
- 'Teenagers' are people between the ages of 15 and 19.
- Tables only include variable values for which there are data.

### Crashes in Taos by Alcohol Involvement



■ All Crashes  
■ Alcohol-involved Crashes

### Fatal and Injury Crashes in Taos by Alcohol Involvement



■ All Fatal and Injury Crashes  
■ Alcohol-involved Fatal and Injury Crashes

### Passenger Vehicle Seatbelt Usage and Injuries in Taos, 2003-2005

Injury Level	2005		2004		2003	
	Total	No Belt	Total	No Belt	Total	No Belt
Killed	1	0	0	0	0	0
Incapacitating injury	3	0	4	1	4	2
Visible injury	24	2	39	5	14	3
Complaint of injury	175	2	124	6	89	0
Unhurt	716	16	781	12	664	12
<b>Total</b>	<b>919</b>	<b>20</b>	<b>948</b>	<b>24</b>	<b>771</b>	<b>17</b>

### The Seven Intersections in Taos with the Most Crashes, 2005

Intersection	Crashes			People	
	Total	Fatal	Injury	Killed	Injured
Albright Rd @ Paseo Del Pueblo Sur	8	0	3	0	4
Camino De La Merced @ Paseo Del Pueblo Sur	22	0	12	0	18
Camino De La Placita @ Paseo Del Pueblo Norte	12	0	2	0	4
Cruz Alta Rd @ Paseo Del Pueblo Sur	10	0	5	0	10
Kit Carson @ Paseo Del Pueblo Norte	19	0	4	0	4
La Posta Rd @ Paseo Del Pueblo Sur	19	0	8	0	13
Los Pandos Rd @ Paseo Del Pueblo Sur	15	0	8	0	12

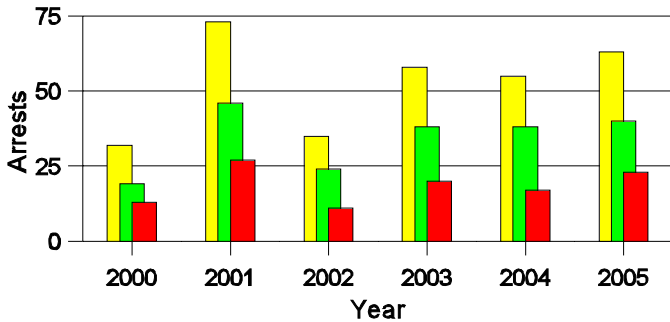
**Lifetime DWI Convictions for Drivers  
Convicted of DWI Violations in Taos, 2005**

Convictions	Since 2000	Since 1981
1st	21	18
2nd	2	4
3rd	1	2
4th	1	1
5th	0	0
6th	0	0
7th	0	0
8th	0	0
9th	0	0
10 or more	0	0
<b>Total</b>	<b>25</b>	<b>25</b>

Convictions are counts of people convicted of DWI by 7/2006 for violations in 2005 in Taos.  
Convictions are not comparable to arrests.

**DWI Arrests in Taos**

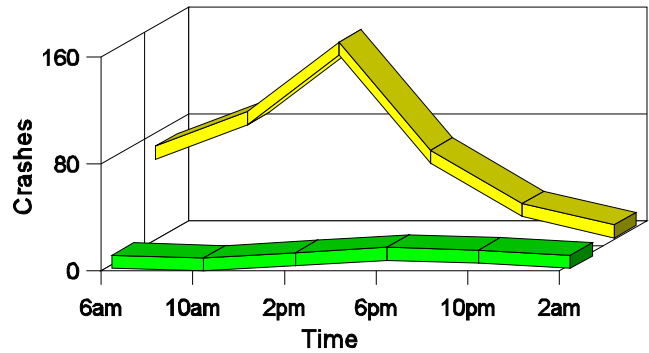
Showing First Arrests and Repeat Offenders



■ Total DWI Arrests  
■ First DWI Arrests  
■ Repeat DWI Arrests

**Crashes in Taos**

by Hour and Alcohol Involvement



■ All Crashes  
■ Alcohol-involved Crashes

**Crashes in Taos by Class, 2005**

Class	Crashes					People	
	Total	% of Total	Fatal	% of Fatal	Injury	Killed	Injured
Other vehicle	313	80	1	50	123	1	203
Pedestrian	3	1	1	50	1	1	1
Fixed object	30	8	0	0	9	0	9
Parked vehicle	24	6	0	0	1	0	1
Overturn	3	1	0	0	0	0	0
Other non-collision	3	1	0	0	0	0	0
Pedalcyclist	5	1	0	0	4	0	4
Animal	5	1	0	0	0	0	0
Other object	3	1	0	0	0	0	0
<b>Total</b>	<b>389</b>	<b>100</b>	<b>2</b>	<b>100</b>	<b>138</b>	<b>2</b>	<b>218</b>

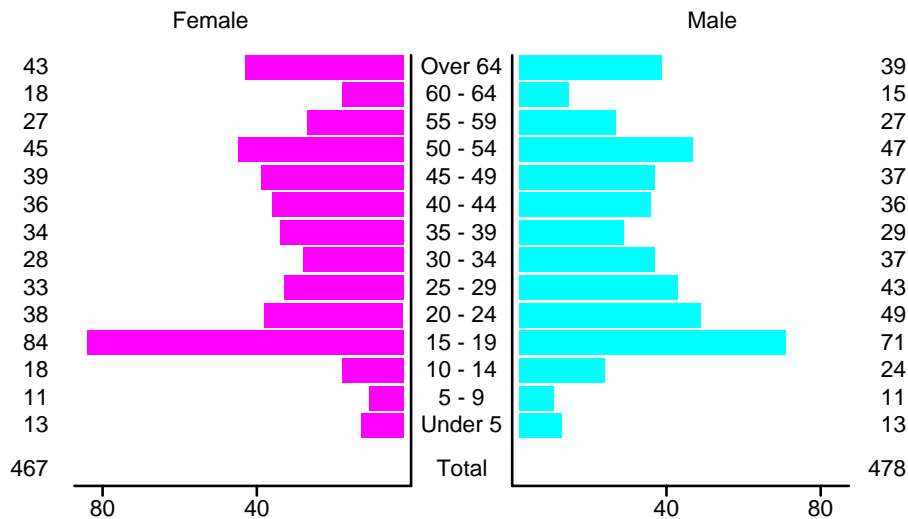
### Crashes in Taos by Vehicle Type, 2005

Vehicle Type	Vehicles					People	
	Total	% of Total	Fatal	% of Fatal	Injury	Killed	Injured
Passenger car	374	49	1	25	145	1	133
Pickup	175	23	1	25	63	0	31
Semi	7	1	0	0	2	0	0
Bus	2	0	0	0	0	0	0
Motorcycle	10	1	0	0	8	0	8
Pedalcyclist	5	1	0	0	4	0	4
Pedestrian	3	0	1	25	1	1	1
Van/4 WD	149	20	0	0	54	0	40
Other	3	0	1	25	0	0	0
Unknown	32	4	0	0	6	0	1
<b>Total</b>	<b>760</b>	<b>100</b>	<b>4</b>	<b>100</b>	<b>283</b>	<b>2</b>	<b>218</b>

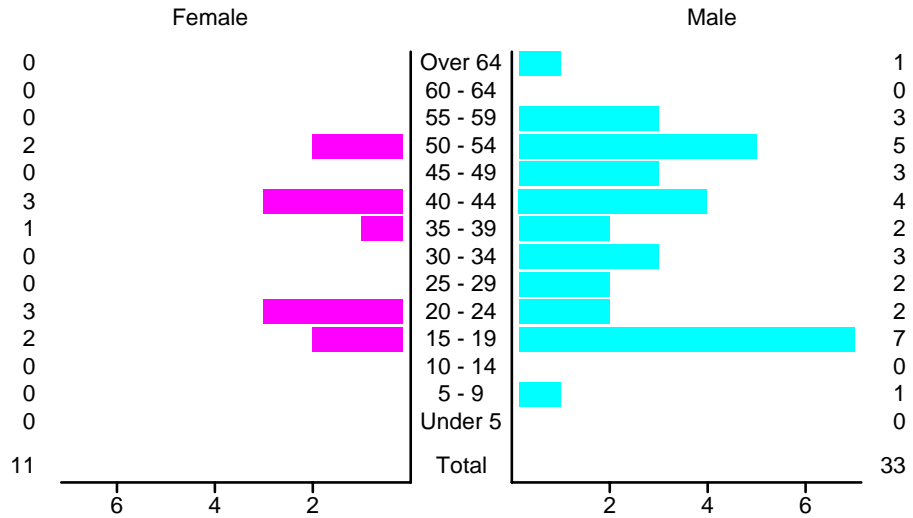
### Crashes in Taos by Top Contributing Factor, 2005

Contributing Factor	Crashes					People	
	Total	% of Total	Fatal	% of Fatal	Injury	Killed	Injured
Alcohol involvement	22	6	1	50	8	1	11
Red light running	20	5	0	0	12	0	21
Failing to yield	86	22	1	50	28	1	45
Excessive speed	24	6	0	0	7	0	13
Driving left of center	3	1	0	0	1	0	3
Following too close	118	30	0	0	52	0	80
Improper turning	9	2	0	0	2	0	4
Improper overtaking	4	1	0	0	1	0	1
Improper backing	16	4	0	0	0	0	0
Mechanical defect	6	2	0	0	3	0	5
Driver inattention	62	16	0	0	21	0	32
Other	19	5	0	0	3	0	3
<b>Total</b>	<b>389</b>	<b>100</b>	<b>2</b>	<b>100</b>	<b>138</b>	<b>2</b>	<b>218</b>

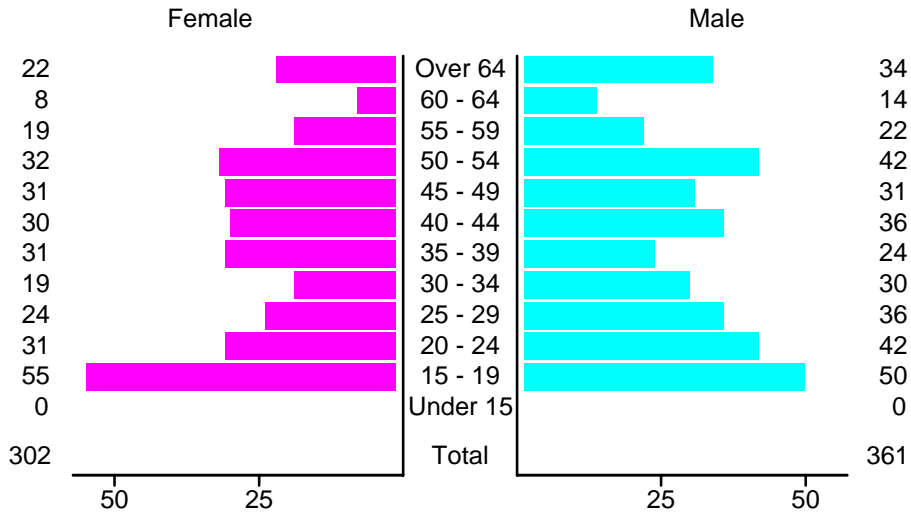
### People in Crashes by Age and Sex in Taos, 2005



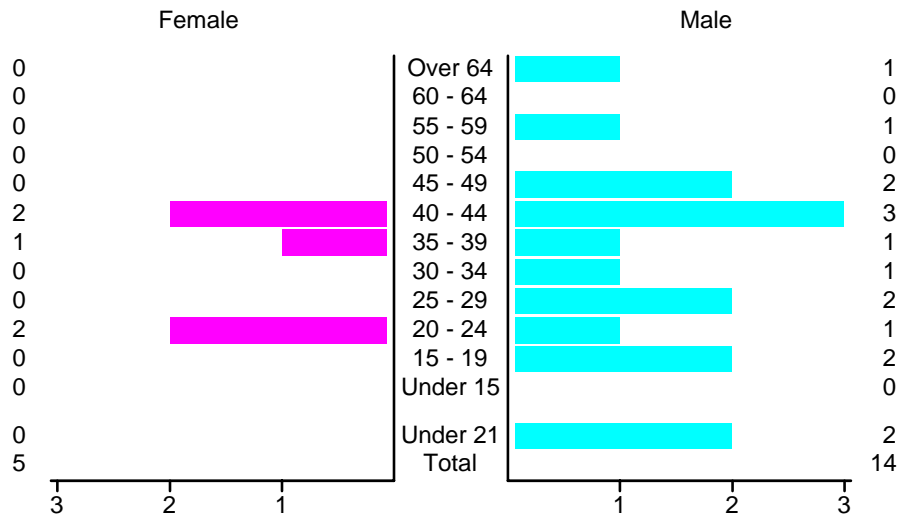
### People in Alcohol-Involved Crashes in Taos by Age and Sex, 2005



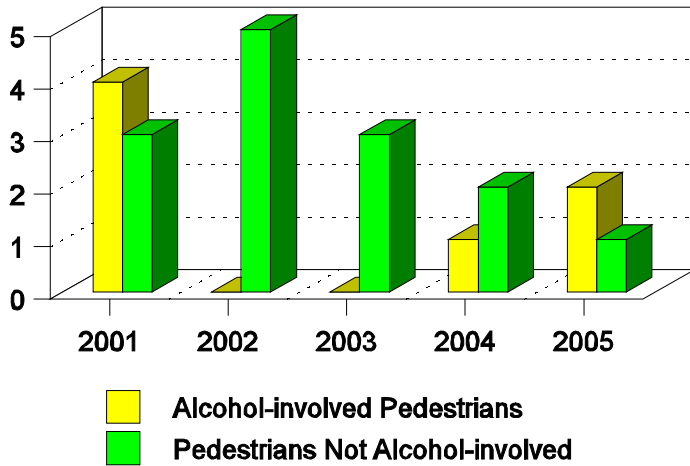
### Drivers in Crashes by Age and Sex in Taos, 2005



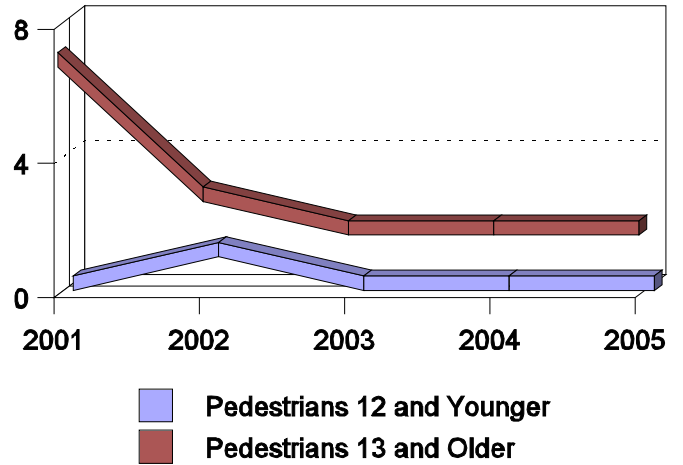
### Alcohol-Involved Drivers in Crashes in Taos by Age and Sex, 2005



**Pedestrian in Crashes in Taos  
by Pedestrian Alcohol-involvement**



**Pedestrian in Crashes in Taos  
by Age Group**



**'Teenagers' and Young Adults in Crashes in Taos by Vehicle Type, 2005**

Vehicle	'Teenage' Drivers			Young Adult Drivers		
	Total	Fatal	Injury	Total	Fatal	Injury
Passenger car	64	0	23	47	0	17
Pickup	21	0	6	13	0	7
Semi	0	0	0	1	0	1
Motorcycle	0	0	0	1	0	1
Pedestrian	0	0	0	1	1	0
Van/4 WD	21	0	6	8	0	4
Unknown	0	0	0	3	0	2
<b>Total</b>	<b>106</b>	<b>0</b>	<b>35</b>	<b>74</b>	<b>1</b>	<b>32</b>

**'Teenagers' and Young Adults Killed and Injured in Crashes by Year in Taos, 1996-2005**

Year	'Teenagers'				Young Adults			
	All Crashes		Alcohol Crashes		All Crashes		Alcohol Crashes	
	Killed	Injured	Killed	Injured	Killed	Injured	Killed	Injured
2005	0	31	0	6	0	12	0	2
2004	0	32	0	4	0	22	0	3
2003	0	9	0	0	0	15	0	1
2002	0	20	0	1	0	15	0	1
2001	1	31	1	2	0	13	0	6
2000	1	37	1	6	0	9	0	1
1999	0	15	0	1	0	14	0	1
1998	0	26	0	2	0	10	0	1
1997	0	21	0	1	0	7	0	1
1996	0	33	0	6	0	10	0	1