

Tucumcari Community Report, 2005

Demographics

In 2005, there were 5,429 licensed drivers in Tucumcari. Of these, there were 2,750 females and 2,679 males. The population of Tucumcari was 5,335. The total number of crashes in 2005 was 50, yielding a crash rate of nine per thousand people (total number of crashes 50 divided by total population 5,335 times 1,000). The corresponding rate for the state was 25 per thousand people.

General Crash Information

Since 2002 the number of crashes has shown a decreasing trend. Fatal and injury crashes have also shown no consistent pattern since 1996. Belt usage (as a percentage) has decreased from last year, while belt usage in crashes involving visible or incapacitating crash injuries has also decreased. There were no fatalities in the seven intersections with the most crashes in 2005. Of these intersections, 1st Street was involved three times.

Alcohol-related Crash Information

Information about alcohol-involved crashes is included in all sections of this report. Of the 32 people convicted of DWI in Tucumcari, 59 percent were first-time DWI convictions (number of first convictions 19 divided by the total number of people convicted 32 times 100). The corresponding percent for the state is 61.

Crash Specifics

Crashes involving other vehicles were the most common class, accounting for 42 percent of all crashes. Passenger cars were the vehicle type most often involved in crashes, accounting for 46 percent of all vehicles in crashes. Pickups accounted for 28 percent of vehicles involved in crashes. Together these two vehicle types comprised 58 percent of the vehicles involved in injury crashes. The three most common top contributing factors were excessive speed, driver inattention, and failing to yield,. There were no fatal crashes in 2005.

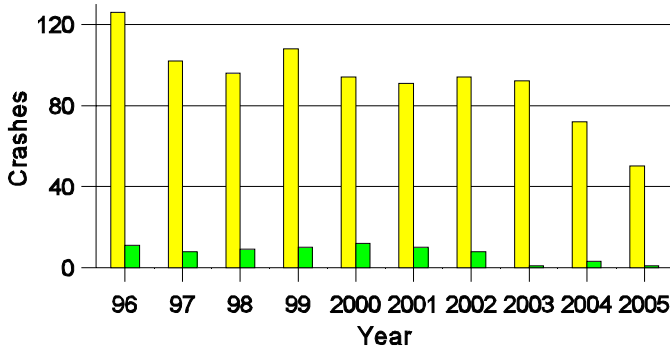
People in Crashes

Overall, males were 66 percent of drivers in crashes, although they account for only 49 percent of licensed drivers in Tucumcari. There were no pedestrians involved in crashes. In 2005, no 'teenagers' or young adults were killed in crashes in Tucumcari. Statewide 17 percent of alcohol-involved drivers were under 21; in Tucumcari the sole alcohol-involved driver in a crash was a 40 to 44 year old male.

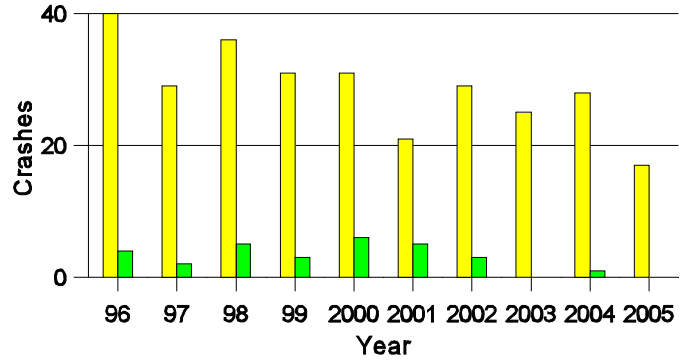
Note: The 1999 crash file contains 15% fewer crashes than the 1998 file. This may be due to problems implementing the new system after the old system failed, or to under reporting. Care should be used in interpreting differences between 1999 and other years in this report.

- Location of arrest/conviction was determined by police agency/court location, not driver residence.
- Crashes and drivers were counted by the city of occurrence/residence.
- Population was counted according to the Census definition.
The city population data is from the most current 2005 estimates.
- Young adults are people between the ages of 20 and 24.
- 'Teenagers' are people between the ages of 15 and 19.
- Tables only include variable values for which there are data.

Crashes in Tucumcari by Alcohol Involvement



Fatal and Injury Crashes in Tucumcari by Alcohol Involvement



Passenger Vehicle Seatbelt Usage and Injuries in Tucumcari, 2003-2005

Injury Level	2005		2004		2003	
	Total	No Belt	Total	No Belt	Total	No Belt
Killed	0	0	0	0	0	0
Incapacitating injury	4	0	5	0	2	0
Visible injury	15	4	3	0	4	0
Complaint of injury	9	1	29	1	16	1
Unhurt	70	1	126	1	190	2
Total	98	6	163	2	212	3

The Seven Intersections in Tucumcari with the Most Crashes, 2005

Intersection	Crashes			People	
	Total	Fatal	Injury	Killed	Injured
1st St @ Amarosa Ave	1	0	0	0	0
1st St @ Hines Ave	1	0	0	0	0
1st St @ Miel De Luna Ave	1	0	0	0	0
2nd St @ Tucumcari Blvd	1	0	0	0	0
5th St @ Dahoney Ave	1	0	0	0	0
College St @ Mcgee Ave	2	0	0	0	0
Mountain Rd @ Tucumcari Blvd	3	0	3	0	4

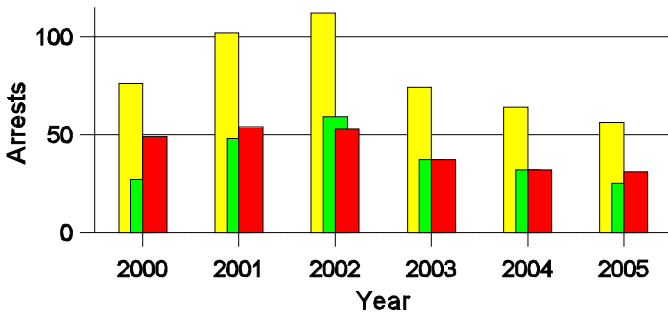
**Lifetime DWI Convictions for Drivers
Convicted of DWI Violations in Tucumcari, 2005**

Convictions	Since 2000	Since 1981
1st	26	19
2nd	3	6
3rd	3	4
4th	0	2
5th	0	0
6th	0	0
7th	0	0
8th	0	0
9th	0	0
10 or more	0	1
Total	32	32

Convictions are counts of people convicted of DWI by 7/2006 for violations in 2005 in Tucumcari.
Convictions are not comparable to arrests.

DWI Arrests in Tucumcari

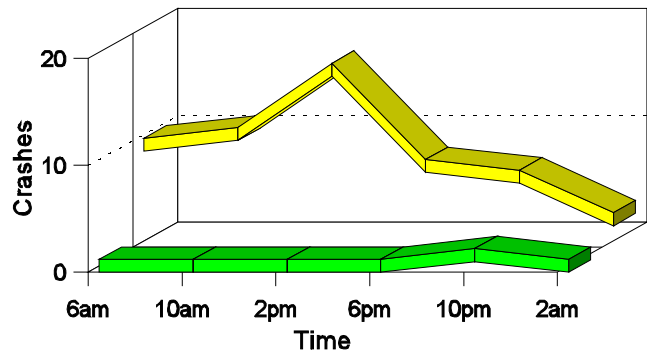
Showing First Arrests and Repeat Offenders



■ Total DWI Arrests
■ First DWI Arrests
■ Repeat DWI Arrests

Crashes in Tucumcari

by Hour and Alcohol Involvement



■ All Crashes
■ Alcohol-involved Crashes

Crashes in Tucumcari by Class, 2005

Class	Crashes				People		
	Total	% of Total	Fatal	% of Fatal	Injury	Killed	Injured
Other vehicle	21	42	0	0	6	0	8
Fixed object	9	18	0	0	3	0	4
Parked vehicle	7	14	0	0	1	0	3
Overturn	7	14	0	0	6	0	14
Other non-collision	2	4	0	0	1	0	1
Animal	2	4	0	0	0	0	0
Other object	2	4	0	0	0	0	0
Total	50	100	0	0	17	0	30

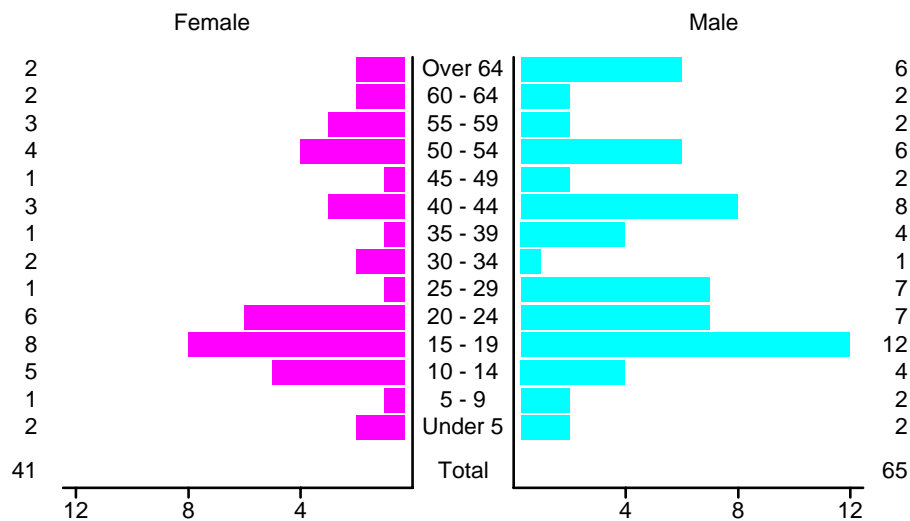
Crashes in Tucumcari by Vehicle Type, 2005

Vehicle Type	Vehicles				People		
	Total	% of Total	Fatal	% of Fatal	Injury	Killed	Injured
Passenger car	36	46	0	0	7	0	12
Pickup	22	28	0	0	7	0	4
Semi	5	6	0	0	5	0	2
Motorcycle	1	1	0	0	0	0	0
Van/4 WD	10	13	0	0	5	0	12
Other	1	1	0	0	0	0	0
Unknown	3	4	0	0	0	0	0
Total	78	100	0	0	24	0	30

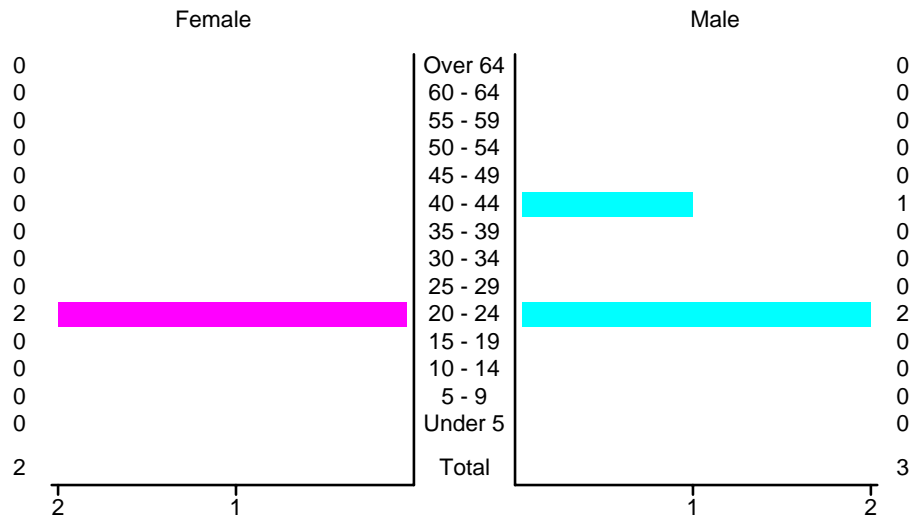
Crashes in Tucumcari by Top Contributing Factor, 2005

Contributing Factor	Crashes				People		
	Total	% of Total	Fatal	% of Fatal	Injury	Killed	Injured
Alcohol involvement	1	2	0	0	0	0	0
Red light running	6	12	0	0	3	0	4
Failing to yield	7	14	0	0	1	0	2
Excessive speed	9	18	0	0	8	0	19
Driving left of center	1	2	0	0	1	0	1
Following too close	1	2	0	0	1	0	1
Improper turning	3	6	0	0	1	0	1
Improper backing	2	4	0	0	0	0	0
Mechanical defect	3	6	0	0	0	0	0
Driver inattention	9	18	0	0	2	0	2
Other	8	16	0	0	0	0	0
Total	50	100	0	0	17	0	30

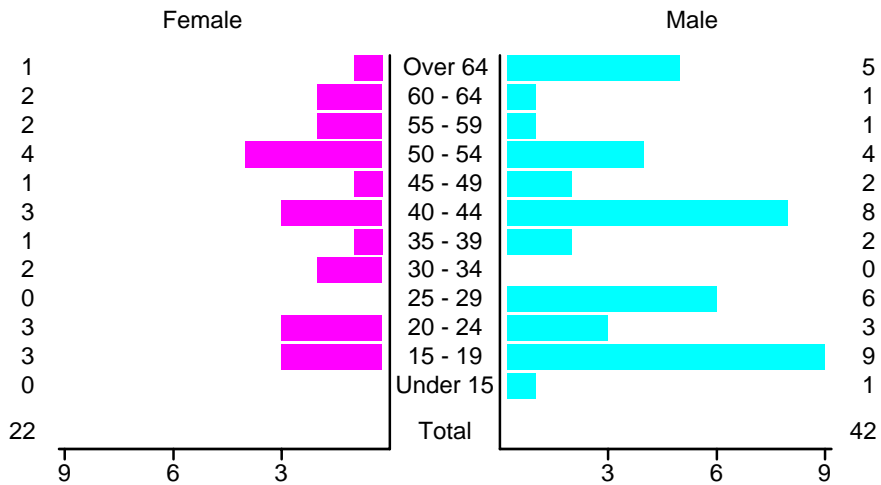
People in Crashes by Age and Sex in Tucumcari, 2005



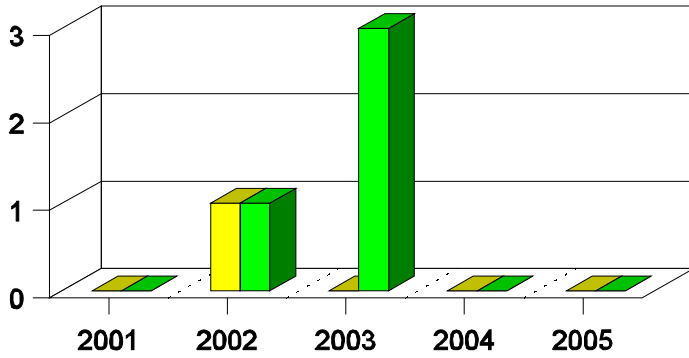
**People in Alcohol-involved Crashes in Tucumcari, 2005
by Age and Sex**



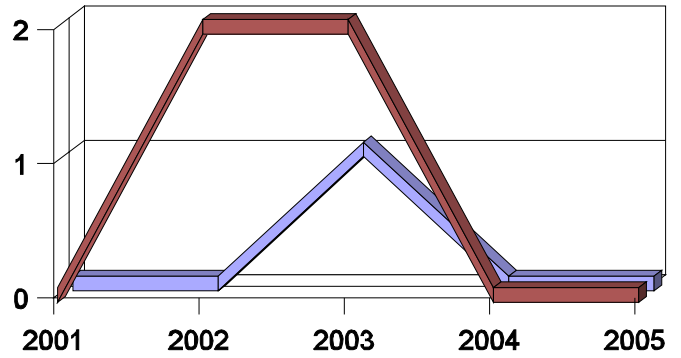
Drivers in Crashes by Age and Sex in Tucumcari, 2005



**Pedestrian in Crashes in Tukumcari
by Pedestrian Alcohol-involvement**



**Pedestrian in Crashes in Tukumcari
by Age Group**



■ Alcohol-involved Pedestrians
■ Pedestrians Not Alcohol-involved

■ Pedestrians 12 and Younger
■ Pedestrians 13 and Older

'Teenagers' and Young Adults in Crashes in Tukumcari by Vehicle Type, 2005

Vehicle	'Teenage' Drivers			Young Adult Drivers		
	Total	Fatal	Injury	Total	Fatal	Injury
Passenger car	10	0	2	2	0	1
Pickup	2	0	0	2	0	1
Van/4 WD	0	0	0	2	0	2
Total	12	0	2	6	0	4

'Teenagers' and Young Adults Killed and Injured in Crashes by Year in Tukumcari, 1996-2005

Year	'Teenagers'				Young Adults			
	All Crashes		Alcohol Crashes		All Crashes		Alcohol Crashes	
	Killed	Injured	Killed	Injured	Killed	Injured	Killed	Injured
2005	0	1	0	0	0	6	0	0
2004	0	13	0	0	0	5	0	1
2003	0	4	0	0	0	3	0	0
2002	0	1	0	0	0	2	0	2
2001	1	7	0	4	0	5	0	3
2000	0	9	0	2	0	3	0	3
1999	0	11	0	1	0	4	0	2
1998	0	9	0	0	0	4	0	0
1997	0	6	0	0	0	6	0	1
1996	0	21	0	4	0	7	0	2