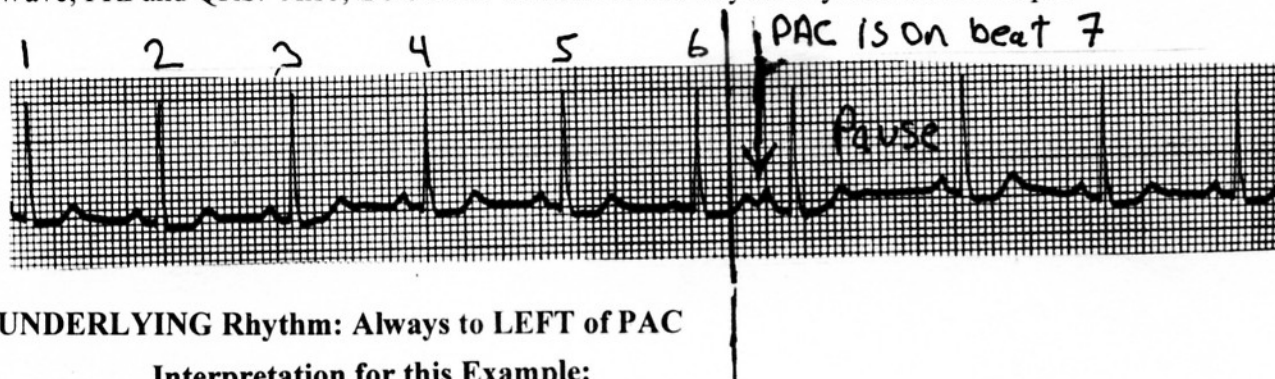


PAC Worksheet: Read Through and then Start Interpreting

A PAC is an early beat. It stands for Premature Atrial Contraction. When doing your rhythm check, you initially may think it is a Sinus Arrhythmia...LOOK CLOSE...The 'P wave' of a PAC is usually different from other 'P Waves' and there is a PAUSE after the beat. Report the UNDERLYING Rhythm, Rate, P Wave, PRI and QRS. Also, LOOK for OTHER PACs in your rhythm. See Example:

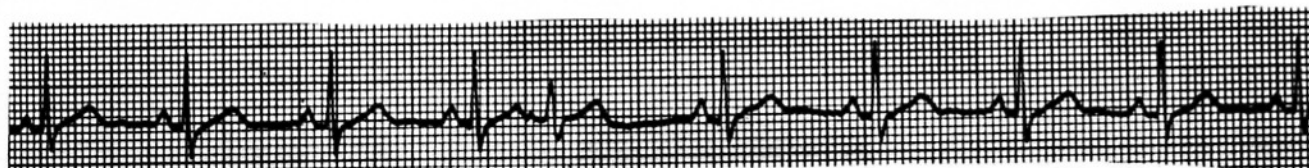


UNDERLYING Rhythm: Always to LEFT of PAC

Interpretation for this Example:
NSR with a PAC (7th Complex)

Please Go Through your Rhythm, Rate, P Wave, PRI and QRS check on your own and interpret these rhythms below...LOOK CLOSELY!

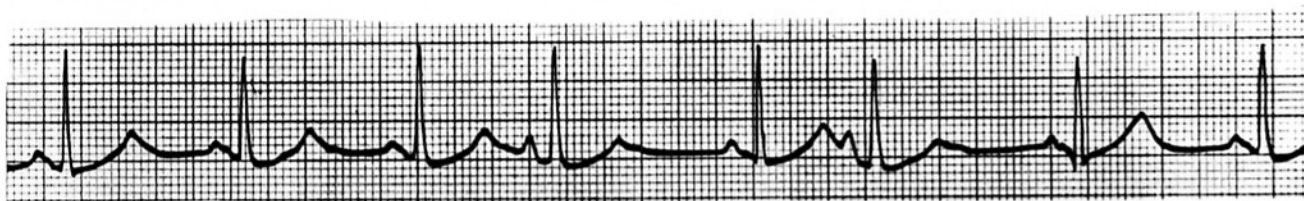
A)



B)



C)



D)

