

The University of New Mexico

Main Campus
Academic & Student Affairs

National Survey of
Student Engagement (NSSE)
Dashboard Presentation

August 8, 2006



The University of New Mexico



Introduction

The Academic & Student Affairs Management Dashboard has been created to address the requirements of an Administration and Governing Board that are committed to data-based decision making and accountability. The document will provide, on a regular basis, data to the Regents on many of the most important operational areas of the University.

The Management Dashboard converges with the goals of the Administration to improve student retention and graduation rates as well as raise the University's stature. This effort paves the way for informed goal-setting and decision-making at UNM. Much of the data comes from other University Documents such as the *UNM Fact Book* and the Accountability in Government Performance Measures reported in the annual *Performance Effectiveness Report*. The Management Dashboard pulls this information together into one place where it can be used on a regular basis.

There are currently nine categories of data represented. Several categories deal with the undergraduate student population (Enrollment Profile, Student Success, and Student Experience), and one profile category each for Graduate Education, Faculty, & National issues. The attached data report provides the detail behind each indicator showing historical trend data, and frequently, targets and/or peer and referent group comparisons. The data report also contains additional performance indicators that are not on the Management Dashboard but are important to track. This report will be updated annually and complemented by a series of detailed reports highlighting specific categories. **For this presentation we are including only the data report sheets for the National Survey of Student Engagement (NSSE).**

In an effort to put the data into context, we have decided upon two comparison groups. The first comparison group is the peer group developed by the Commission on Higher Education (CHE) for use in the funding formula and for making salary comparisons. The 16 CHE peers are institutions with a similar mix of programs and similar size and mission as UNM. The second comparison group, a Student Referent group, includes institutions with a student body more analogous to UNM than the CHE Peer group. The institutions in the Student Referent group met the following criteria:

- Public, Carnegie, Doctoral Extensive or Intensive;
- Similar distribution of ACT scores;
- An undergraduate minority population of at least 30%;
- Comparable size, i.e., at least 10,000 full-time undergraduate students

Sixteen institutions met the above criteria, the same number of institutions that are in the CHE Peer group..



Table of Contents

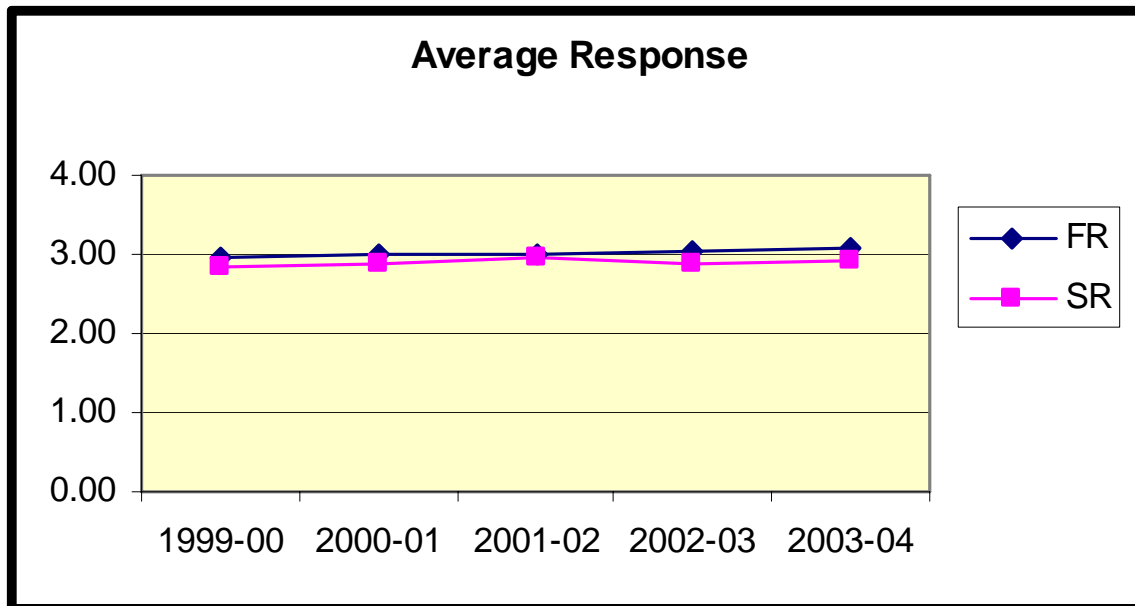
National Survey of Student Engagement (NSSE) Questions

- If you could start over, would you go to the same institution you are now attending?
- Overall, how would you rate the quality of academic advising you have received at your institution?
- How would you evaluate your entire educational experience at this institution?
- During the current school year, how often have you discussed ideas from your reading or classes with faculty members outside of class?
- What number best represents the quality of your relationships with other students?
- What number best represents the quality of your relationships with faculty members?
- What number best represents the quality of your relationships with administrative personnel and offices?
- How many hours do you spend in a typical 7-day week working for pay off-campus?
- How many hours do you spend during a week participating in co-curricular activities (organizations, campus publications, student government, etc.)?
- To what extent does your school emphasize providing the support you need to help you succeed academically?
- To what extent does your campus emphasize attending campus events and activities (speakers, performances, athletics, etc.)?
- Has your campus experience contributed to your knowledge, skills, and personal development in the area of critical and analytical thinking?

NSSE Dashboard

If you could start over, would you go to the same institution you are now attending?

		Percent in Each Response Category					
Response Categories	Value of Response	Academic Class	1999-00	2000-01	2001-02	2002-03	2003-04
Definitely No	1	FR	6.8%	5.8%	5.0%	3.4%	3.1%
		SR	8.3%	9.0%	7.9%	8.5%	6.8%
Probably No	2	FR	15.9%	17.0%	19.8%	15.6%	16.5%
		SR	18.9%	16.4%	13.1%	16.6%	19.3%
Probably Yes	3	FR	52.3%	49.8%	46.9%	53.6%	48.8%
		SR	52.5%	50.8%	53.9%	52.8%	48.8%
Definitely Yes	4	FR	25.0%	27.4%	28.2%	27.4%	31.5%
		SR	20.4%	23.8%	25.1%	22.1%	25.1%
			Average Response				
			1999-00	2000-01	2001-02	2002-03	2003-04
FR			2.95	2.99	2.98	3.05	3.09
SR			2.85	2.89	2.96	2.88	2.92



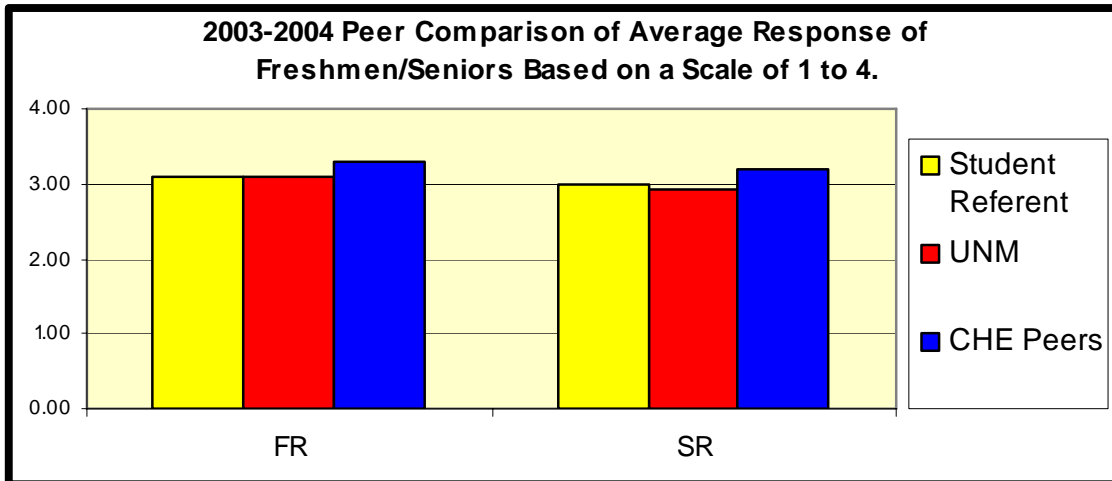
Source: National Survey of Student Engagement (2003-04)

NSSE Dashboard

If you could start over, would you go to the same institution you are now attending? *(Continued)*

Student Referent/CHE Peer Comparison

Peer Comparison of 2003-2004 Average Response			
Academic Class	Student Referent	UNM	CHE Peers
FR	3.09	3.09	3.30
SR	2.98	2.92	3.18

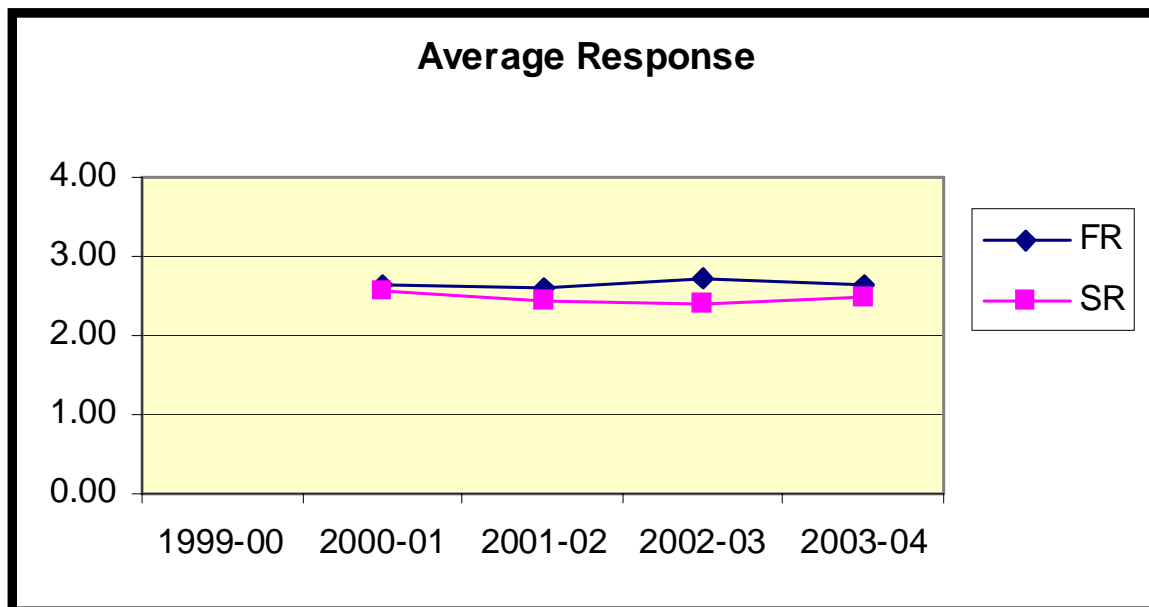


Source: National Survey of Student Engagement (2003-04)

NSSE Dashboard

Overall, how would you rate the quality of academic advising you have received at your institution?

		Percent in Each Response					
Response Categories	Value of Response	Academic Class	1999-00	2000-01	2001-02	2002-03	2003-04
Poor	1	FR	No Data	9.7%	14.6%	9.6%	9.9%
		SR	No Data	16.8%	20.8%	20.1%	19.8%
Fair	2	FR	No Data	30.5%	26.4%	23.6%	23.7%
		SR	No Data	27.5%	28.1%	34.2%	26.1%
Good	3	FR	No Data	45.6%	42.9%	53.4%	57.7%
		SR	No Data	38.9%	38.5%	32.7%	39.9%
Excellent	4	FR	No Data	14.2%	16.1%	13.5%	8.7%
		SR	No Data	16.8%	12.5%	13.1%	14.1%
			Average Response				
			1999-00	2000-01	2001-02	2002-03	2003-04
FR				2.64	2.61	2.71	2.65
SR				2.56	2.43	2.39	2.48



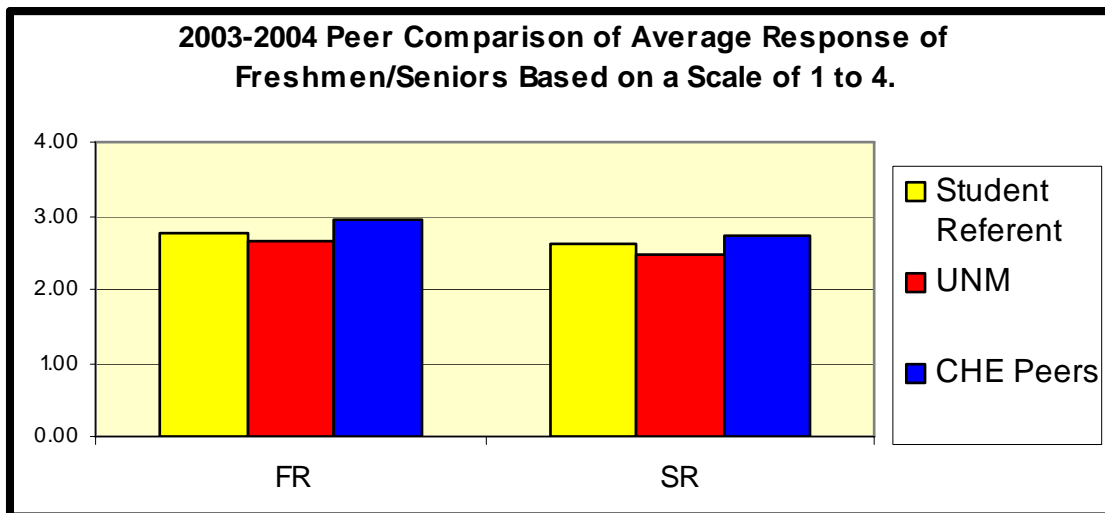
Source: National Survey of Student Engagement (2003-04)

NSSE Dashboard

Overall, how would you rate the quality of academic advising you've received at your institution? *(Continued)*

Student Referent/CHE Peer Comparison

Peer Comparison of 2003-2004 Average Response			
Academic Class	Student Referent	UNM	CHE Peers
FR	2.77	2.65	2.93
SR	2.62	2.48	2.71

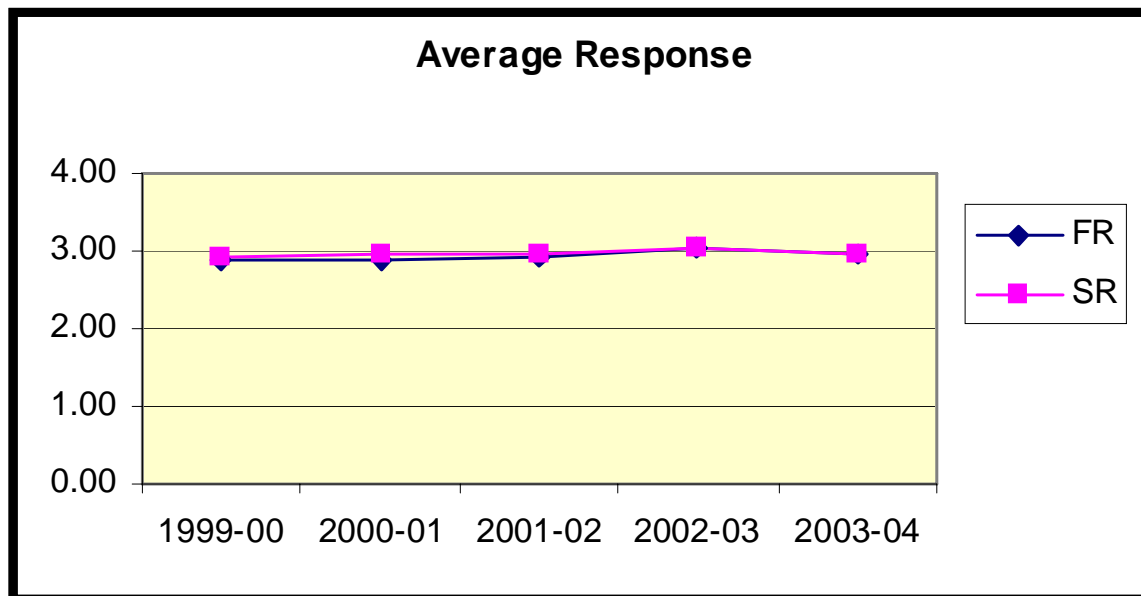


Source: National Survey of Student Engagement (2003-04)

NSSE Dashboard

How would you evaluate your entire educational experience at this institution?

		Percent in Each Response Category					
Response Categories	Value of Response	Academic Class	1999-00	2000-01	2001-02	2002-03	2003-04
Poor	1	FR	3.6%	3.6%	1.5%	1.7%	2.0%
		SR	3.4%	5.7%	2.6%	2.5%	2.1%
Fair	2	FR	20.9%	19.3%	20.2%	10.1%	15.7%
		SR	20.6%	14.7%	20.9%	16.5%	19.8%
Good	3	FR	60.5%	61.9%	61.5%	72.1%	65.7%
		SR	57.3%	56.3%	56.0%	55.5%	59.6%
Excellent	4	FR	15.0%	15.2%	16.8%	16.2%	16.5%
		SR	18.7%	23.3%	20.4%	25.5%	18.5%
			Average Response				
			1999-00	2000-01	2001-02	2002-03	2003-04
FR			2.87	2.89	2.94	3.03	2.97
SR			2.91	2.97	2.94	3.04	2.95



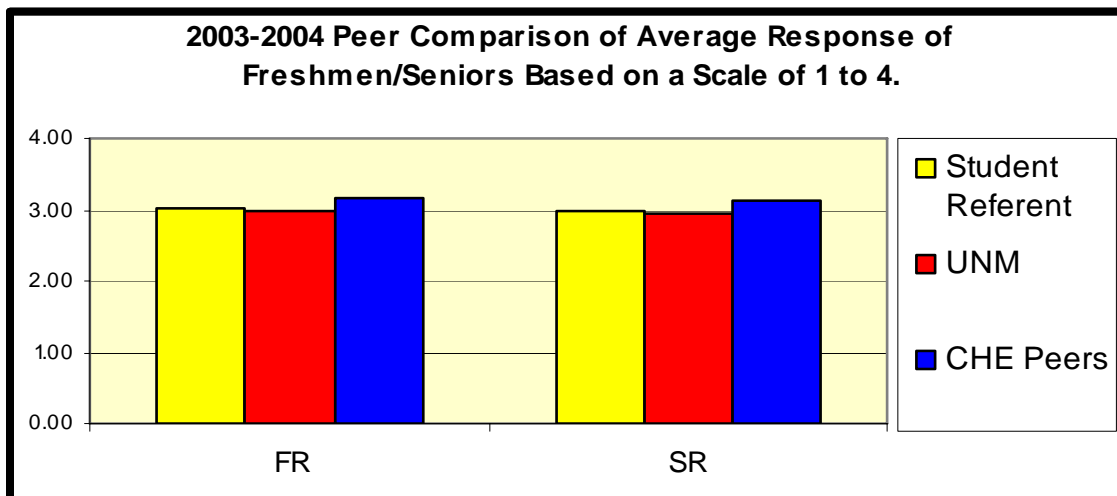
Source: National Survey of Student Engagement (2003-04)

NSSE Dashboard

How would you evaluate your entire educational experience at this institution? *(Continued)*

Student Referent/CHE Peer Comparison

Peer Comparison of 2003-2004 Average Response			
Academic Class	Student Referent	UNM	CHE Peers
FR	3.01	2.97	3.18
SR	2.99	2.95	3.12

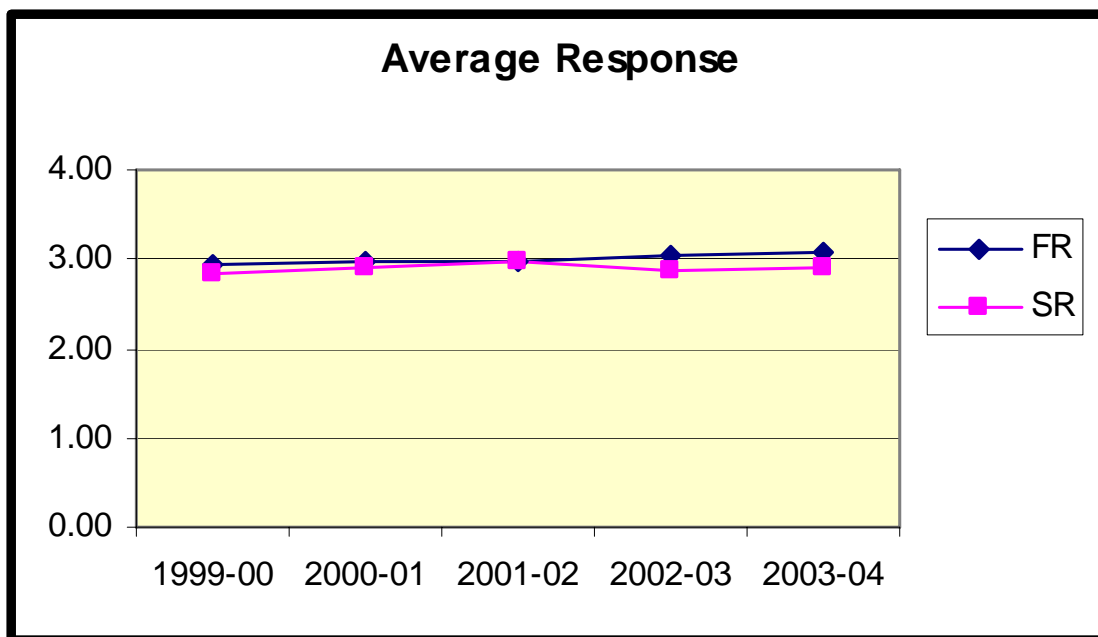


Source: National Survey of Student Engagement (2003-04)

NSSE Dashboard

If you could start over again, would you go to the same institution you are now attending?

		Percent in Each Response Category					
Response Categories	Value of Response	Academic Class	1999-00	2000-01	2001-02	2002-03	2003-04
Definitely No	1	FR	6.8%	5.8%	5.0%	3.4%	3.1%
		SR	8.3%	9.0%	7.9%	8.5%	6.8%
Probably No	2	FR	15.9%	17.0%	19.8%	15.6%	16.5%
		SR	18.9%	16.4%	13.1%	16.6%	19.3%
Probably Yes	3	FR	52.3%	49.8%	46.9%	53.6%	48.8%
		SR	52.5%	50.8%	53.9%	52.8%	48.8%
Definitely Yes	4	FR	25.0%	27.4%	28.2%	27.4%	31.5%
		SR	20.4%	23.8%	25.1%	22.1%	25.1%
			Average Response				
			1999-00	2000-01	2001-02	2002-03	2003-04
FR			2.95	2.99	2.98	3.05	3.09
SR			2.85	2.89	2.96	2.88	2.92



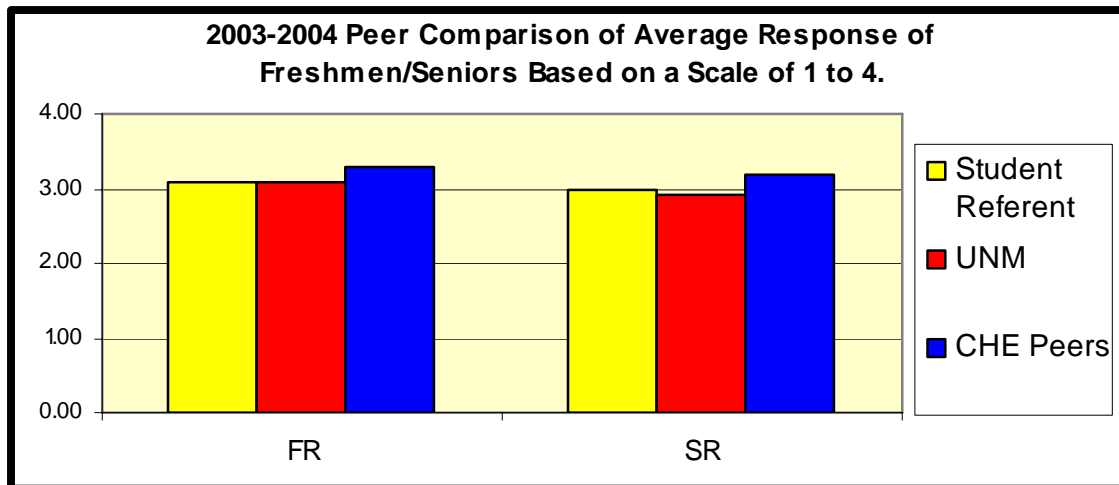
Source: National Survey of Student Engagement (2003-04)

NSSE Dashboard

If you could start over again, would you go to the same institution you are now attending? *(Continued)*

Student Referent/CHE Peer Comparison

Peer Comparison of 2003-2004 Average Response			
Academic Class	Student Referent	UNM	CHE Peers
FR	3.09	3.09	3.30
SR	2.98	2.92	3.18

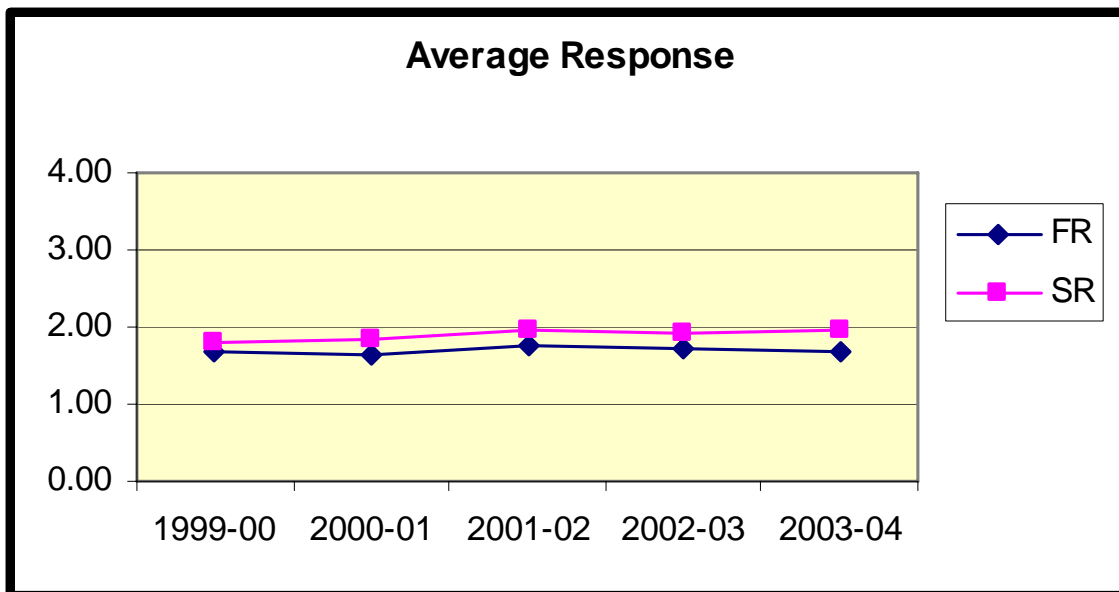


Source: National Survey of Student Engagement (2003-04)

NSSE Dashboard

During the current school year, how often have you discussed ideas from your reading or classes with Faculty members outside of class?

Response Categories	Value of Response	Percentage in Each Response Category					
		Academic Class	1999-00	2000-01	2001-02	2002-03	2003-04
Never	1	FR	49.5%	51.8%	40.9%	42.2%	50.8%
		SR	37.0%	40.0%	33.7%	33.0%	32.4%
Sometimes	2	FR	35.5%	35.7%	44.7%	44.9%	33.1%
		SR	47.5%	42.0%	44.0%	47.5%	43.6%
Often	3	FR	12.7%	10.3%	11.7%	10.8%	12.3%
		SR	12.8%	12.2%	15.5%	13.0%	17.5%
Very Often	4	FR	2.3%	2.2%	2.7%	2.2%	3.8%
		SR	2.6%	5.7%	6.7%	6.5%	6.5%
		Average Response					
			1999-00	2000-01	2001-02	2002-03	2003-04
		FR	1.68	1.63	1.76	1.73	1.69
		SR	1.81	1.84	1.95	1.93	1.98



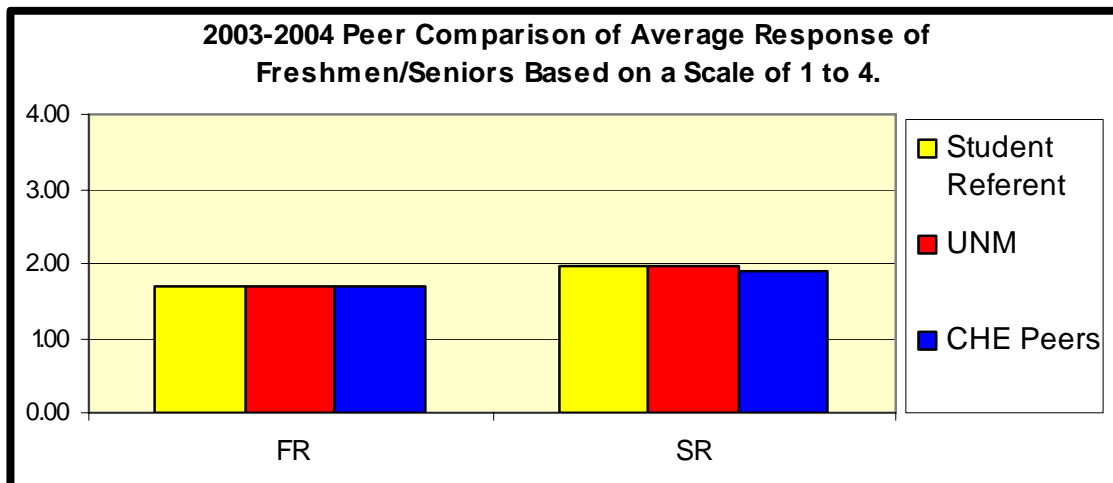
Source: National Survey of Student Engagement (2003-04)

NSSE Dashboard

During the current school year, how often have you discussed ideas from your reading or classes with Faculty members outside of class? *(Continued)*

Student Referent/CHE Peer Comparison

Peer Comparison of 2003-2004 Average Response			
Academic Class	Student Referent	UNM	CHE Peers
FR	1.69	1.69	1.70
SR	1.98	1.98	1.89

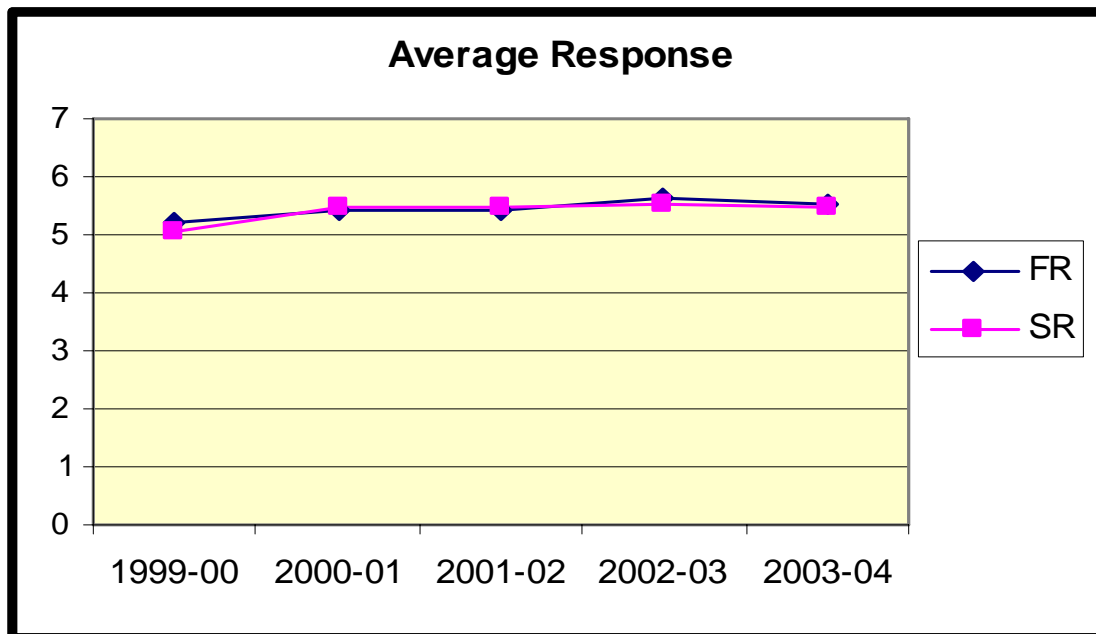


Source: National Survey of Student Engagement (2003-04)

NSSE Dashboard

What number best represents the quality of your relationships with other students?

Response Categories	Value of Response	Academic Class	Percent in Each Response Category				
			1999-00	2000-01	2001-02	2002-03	2003-04
Unfriendly/ Unsupportive/ Sense of Alienation	1	FR	1.4%	0.4%	0.4%	0.6%	0.4%
		SR	2.2%	0.8%	0.0%	1.5%	1.6%
	2	FR	3.7%	0.9%	2.3%	2.2%	3.1%
		SR	4.9%	2.4%	4.7%	3.0%	2.3%
	3	FR	7.8%	8.0%	6.5%	3.9%	5.1%
		SR	7.1%	5.3%	3.7%	2.0%	6.3%
	4	FR	15.1%	12.5%	15.3%	11.1%	10.2%
		SR	16.9%	11.8%	11.0%	14.0%	9.1%
	5	FR	21.0%	24.1%	21.1%	18.3%	23.2%
		SR	23.6%	24.5%	24.6%	22.5%	23.7%
	6	FR	33.3%	34.4%	29.9%	36.7%	30.7%
		SR	28.1%	31.4%	31.4%	27.5%	31.0%
Friendly / Supportive / Sense of Belonging	7	FR	17.8%	19.6%	24.5%	27.2%	27.2%
		SR	17.2%	23.7%	24.6%	29.5%	26.0%
			Average Response				
			1999-00	2000-01	2001-02	2002-03	2003-04
FR			5.22	5.41	5.42	5.63	5.54
SR			5.08	5.46	5.48	5.54	5.48



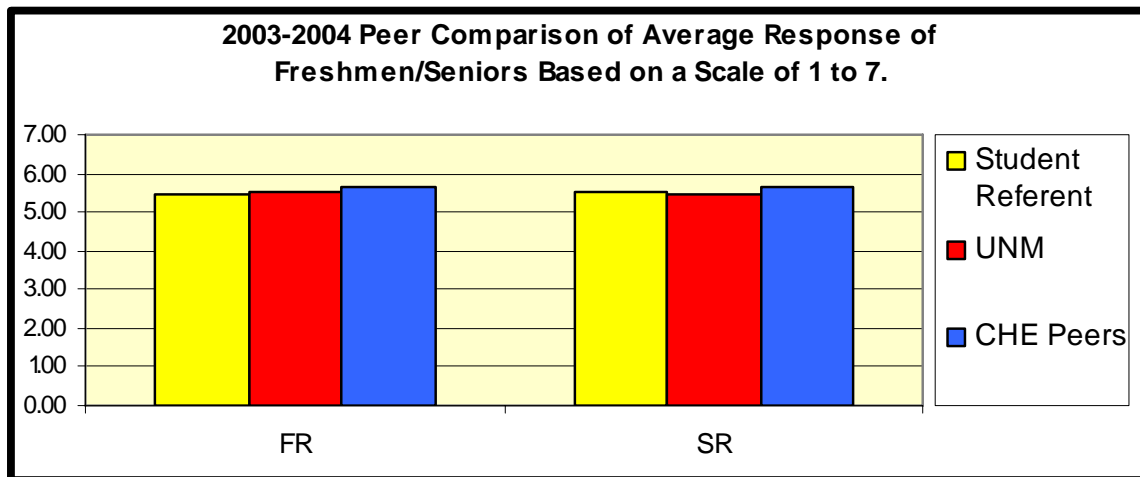
Source: National Survey of Student Engagement (2003-04)

NSSE Dashboard

What number best represents the quality of your relationships with other students? *(Continued)*

Student Referent/CHE Peer Comparison

Peer Comparison of 2003-2004 Average Response			
Academic Class	Student Referent	UNM	CHE Peers
FR	5.45	5.54	5.68
SR	5.53	5.48	5.62

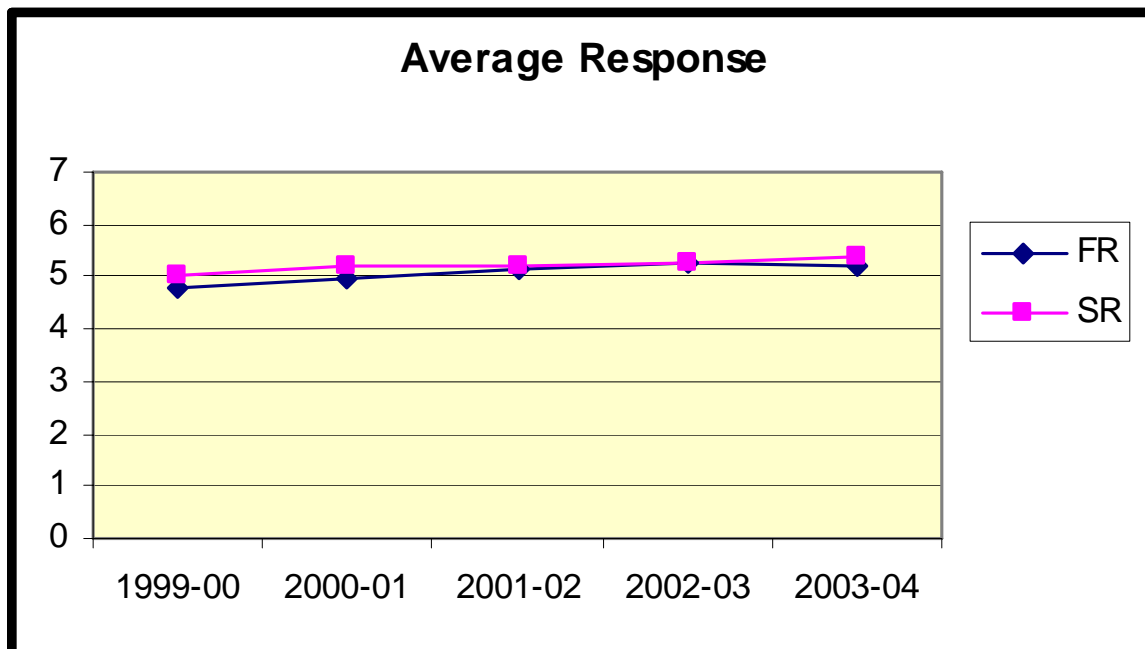


Source: National Survey of Student Engagement (2003-04)

NSSE Dashboard

What number best represents the quality of your relationships with faculty members?

		Percent in Each Response Category					
Response Categories	Value of Response	Academic Class	1999-00	2000-01	2001-02	2002-03	2003-04
Unavailable/ Unhelpful/	1	FR	1.8%	0.9%	0.4%	0.6%	0.4%
		SR	1.9%	2.0%	1.6%	1.5%	1.3%
	2	FR	5.0%	4.5%	3.4%	1.1%	3.9%
		SR	5.2%	4.5%	1.0%	4.0%	3.1%
	3	FR	10.5%	9.8%	6.9%	7.8%	5.1%
		SR	7.9%	4.1%	8.4%	4.5%	4.4%
	4	FR	23.7%	17.9%	15.7%	16.1%	15.3%
		SR	16.9%	15.5%	14.1%	13.5%	11.7%
	5	FR	23.7%	28.1%	31.4%	25.6%	29.4%
		SR	24.7%	26.9%	29.3%	27.0%	27.2%
	6	FR	23.7%	26.8%	26.8%	33.9%	31.4%
		SR	30.7%	28.2%	30.9%	32.0%	32.9%
Available/ Helpful/	7	FR	11.4%	12.1%	15.3%	15.0%	14.5%
		SR	12.7%	18.8%	14.7%	17.5%	19.3%
			Average Response				
			1999-00	2000-01	2001-02	2002-03	2003-04
FR			4.79	4.96	5.16	5.27	5.22
SR			5.00	5.20	5.20	5.27	5.36



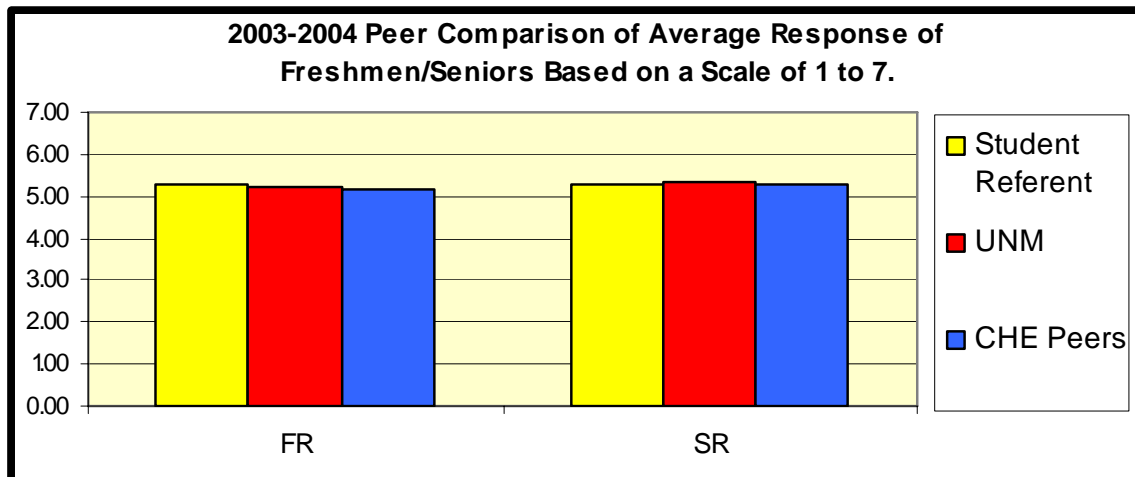
Source: National Survey of Student Engagement (2003-04)

NSSE Dashboard

What number best represents the quality of your relationships with faculty members? *(Continued)*

Student Referent/CHE Peer Comparison

Peer Comparison of 2003-2004 Average Response			
Academic Class	Student Referent	UNM	CHE Peers
FR	5.28	5.22	5.19
SR	5.27	5.36	5.27

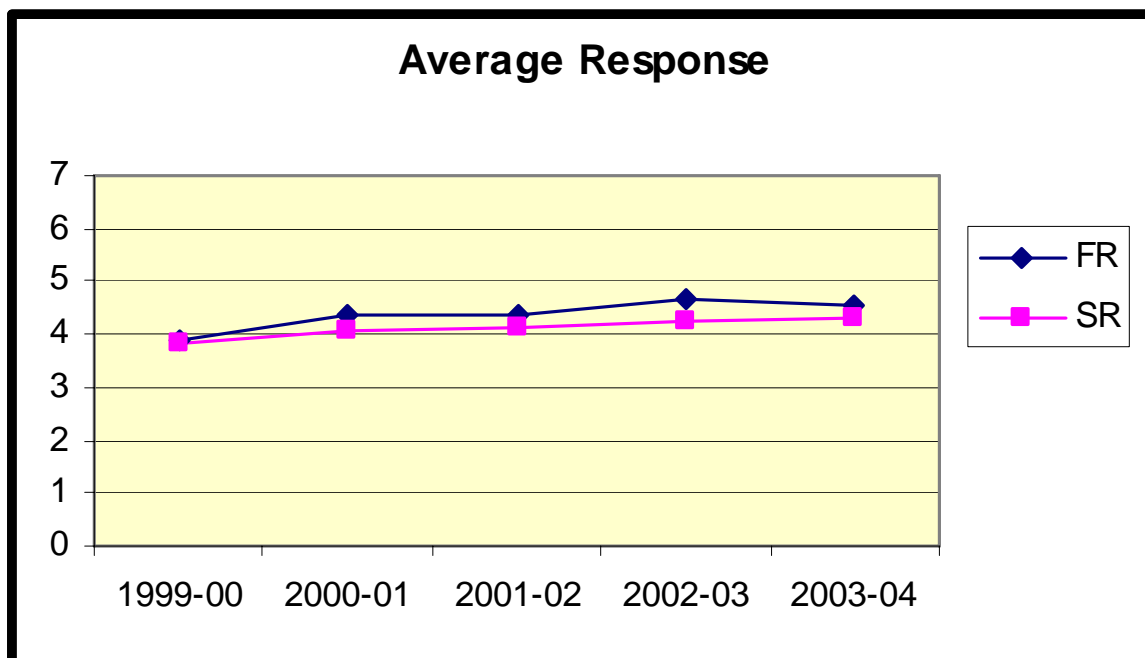


Source: National Survey of Student Engagement (2003-04)

NSSE Dashboard

What number best represents the quality of your relationships with administrative personnel and offices?

		Percent in Each Response Category					
Response Categories	Value of Response	Academic Class	1999-00	2000-01	2001-02	2002-03	2003-04
Rigid/Unhelpful/Inconsiderate	1	FR	11.0%	6.3%	5.0%	3.9%	5.1%
		SR	11.7%	11.8%	9.9%	7.5%	11.2%
	2	FR	11.4%	6.3%	8.4%	5.6%	7.8%
		SR	15.0%	7.3%	8.9%	11.5%	9.9%
	3	FR	17.4%	16.5%	15.3%	11.1%	12.2%
		SR	15.0%	13.9%	13.6%	16.0%	11.2%
	4	FR	22.8%	18.8%	24.9%	19.4%	16.5%
		SR	22.6%	22.4%	23.6%	16.0%	14.8%
	5	FR	17.8%	25.0%	17.2%	28.3%	25.5%
		SR	16.5%	22.4%	19.4%	21.5%	21.1%
	6	FR	15.5%	22.3%	21.8%	21.1%	23.9%
		SR	12.0%	15.5%	17.8%	18.0%	18.8%
Flexible/Helpful/Considerate	7	FR	4.1%	4.9%	7.3%	10.6%	9.0%
		SR	7.1%	6.5%	6.8%	9.5%	13.0%
		Average Response					
			1999-00	2000-01	2001-02	2002-03	2003-04
		FR	3.88	4.37	4.36	4.68	4.57
		SR	3.82	4.09	4.14	4.25	4.33



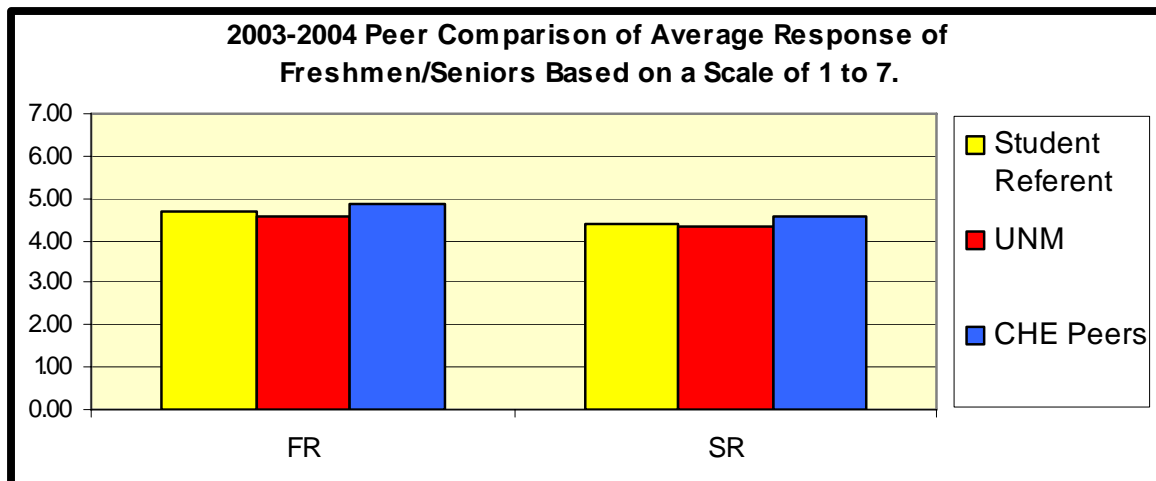
Source: National Survey of Student Engagement (2003-04)

NSSE Dashboard

What number best represents the quality of your relationships with administrative personnel and offices?
(Continued)

Student Referent/CHE Peer Comparison

Peer Comparison of 2003-2004 Average Response			
Academic Class	Student Referent	UNM	CHE Peers
FR	4.71	4.57	4.85
SR	4.40	4.33	4.54

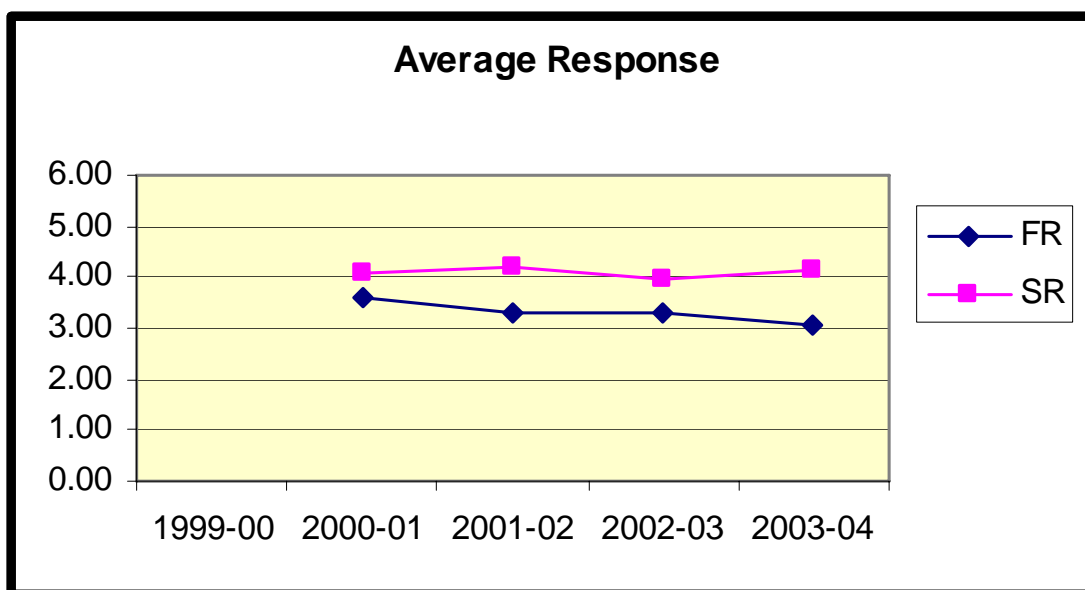


Source: National Survey of Student Engagement (2003-04)

NSSE Dashboard

How many hours do you spend in a typical 7-day week working for pay off-campus?

		Percent in Each Response Category					
Response Categories	Value of Response	Academic Class	1999-00	2000-01	2001-02	2002-03	2003-04
0 Hours	1	FR	No Data	39.1%	43.1%	43.9%	50.0%
		SR	No Data	39.3%	33.9%	41.7%	36.6%
1-5 Hours	2	FR	No Data	4.0%	5.8%	6.7%	6.7%
		SR	No Data	2.0%	2.1%	2.5%	4.5%
6-10 Hours	3	FR	No Data	8.4%	6.9%	7.2%	3.9%
		SR	No Data	4.9%	8.3%	4.0%	5.0%
11-15 Hours	4	FR	No Data	8.0%	8.8%	6.7%	6.3%
		SR	No Data	5.3%	4.7%	6.0%	5.0%
16-20 Hours	5	FR	No Data	14.2%	12.7%	10.0%	9.4%
		SR	No Data	12.3%	15.1%	9.0%	9.9%
21-25 Hours	6	FR	No Data	8.4%	9.6%	10.6%	11.0%
		SR	No Data	7.4%	10.4%	8.0%	9.4%
25-30 Hours	7	FR	No Data	7.6%	7.7%	6.7%	5.9%
		SR	No Data	8.2%	4.7%	9.0%	7.3%
30+ Hours	8	FR	No Data	10.2%	5.4%	8.3%	6.7%
		SR	No Data	20.5%	20.8%	19.6%	22.3%
			Average Response				
			1999-00	2000-01	2001-02	2002-03	2003-04
FR				3.61	3.29	3.32	3.09
SR				4.07	4.19	3.96	4.16



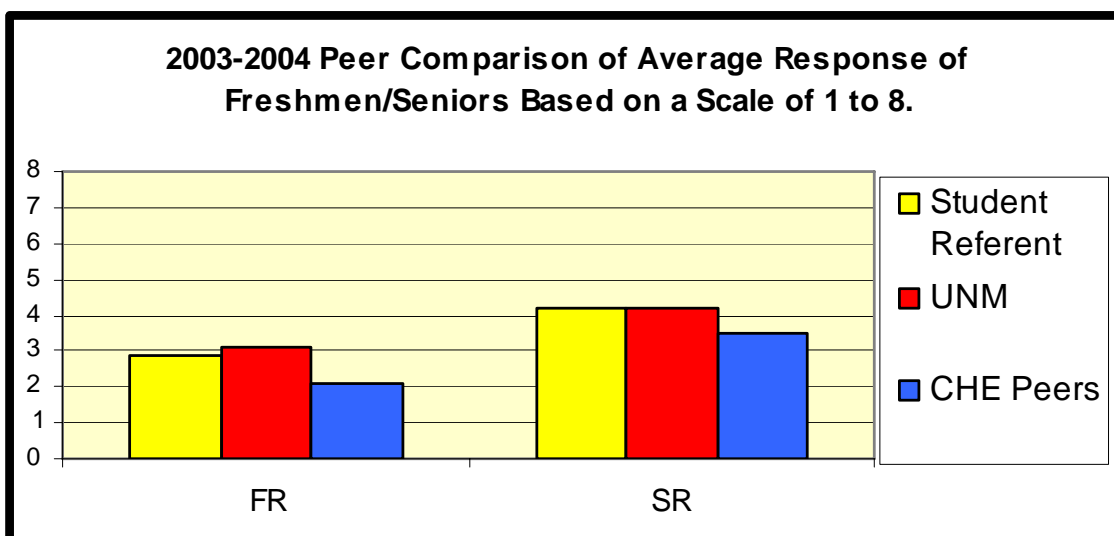
Source: National Survey of Student Engagement (2003-04)

NSSE Dashboard

How many hours do you spend in a typical 7-day week working for pay off-campus? *(Continued)*

Student Referent/CHE Peer Comparison

Peer Comparison of 2003-2004 Average Response			
Academic	Student Referent	UNM	CHE Peers
FR	2.85	3.09	2.11
SR	4.16	4.16	3.47

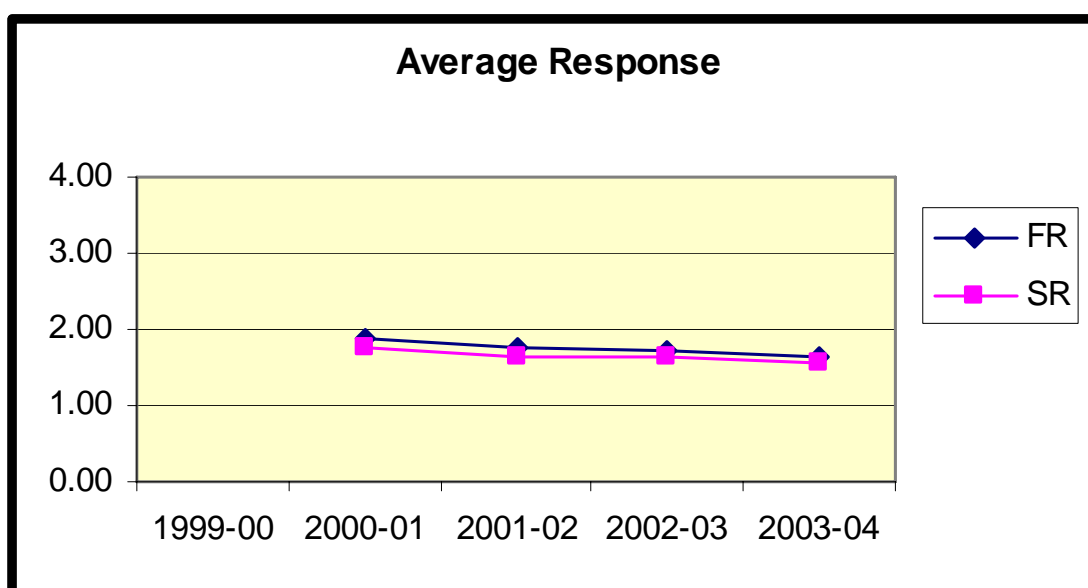


Source: National Survey of Student Engagement (2003-04)

NSSE Dashboard

How many do you spend during a week participating in co-curricular activities (organizations, campus publications, student government, etc.)?

		Percent in Each Response Category					
Response Categories	Value of Response	Academic Class	2000-01	2001-02	2002-03	2003-04	2004-05
0 Hours	1	FR	No Data	61.3%	64.4%	57.3%	66.9%
		SR	No Data	61.2%	59.7%	64.6%	68.9%
1-5 Hours	2	FR	No Data	20.4%	17.6%	28.7%	20.9%
		SR	No Data	24.1%	29.3%	22.2%	19.1%
6-10 Hours	3	FR	No Data	5.8%	8.4%	5.1%	3.9%
		SR	No Data	6.1%	3.7%	5.1%	6.8%
11-15 Hours	4	FR	No Data	3.6%	3.4%	5.6%	3.1%
		SR	No Data	2.0%	3.1%	3.5%	1.6%
16-20 Hours	5	FR	No Data	4.4%	2.3%	0.6%	2.0%
		SR	No Data	2.4%	2.6%	2.5%	1.8%
21-25 Hours	6	FR	No Data	1.8%	1.5%	1.7%	1.6%
		SR	No Data	2.4%	1.0%	1.0%	0.8%
25-30 Hours	7	FR	No Data	1.3%	1.5%	1.1%	0.4%
		SR	No Data	0.8%	0.5%	0.0%	0.5%
30+ Hours	8	FR	No Data	1.3%	0.8%	0.0%	1.2%
		SR	No Data	0.8%	0.0%	1.0%	0.5%
		Average Response					
			1999-00	2000-01	2001-02	2002-03	2003-04
		FR		1.87	1.76	1.73	1.65
		SR		1.75	1.65	1.65	1.55



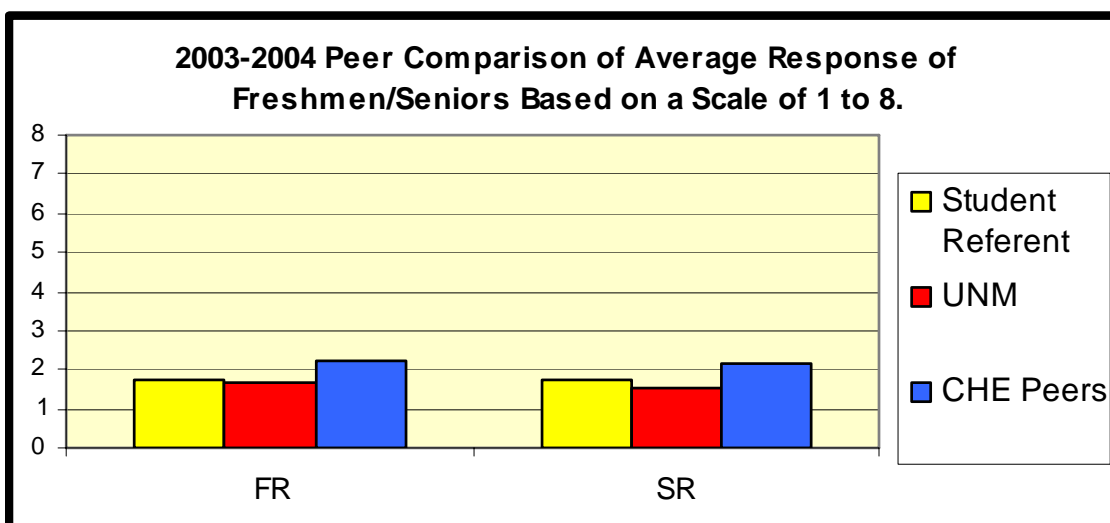
Source: National Survey of Student Engagement (2003-04)

NSSE Dashboard

How many do you spend during a week participating in co-curricular activities (organizations, campus publications, student government, etc.)? *(Continued)*

Student Referent/CHE Peer Comparison

Peer Comparison of 2003-2004 Average Response			
Academic	Student Referent	UNM	CHE Peers
FR	1.76	1.65	2.25
SR	1.75	1.55	2.13

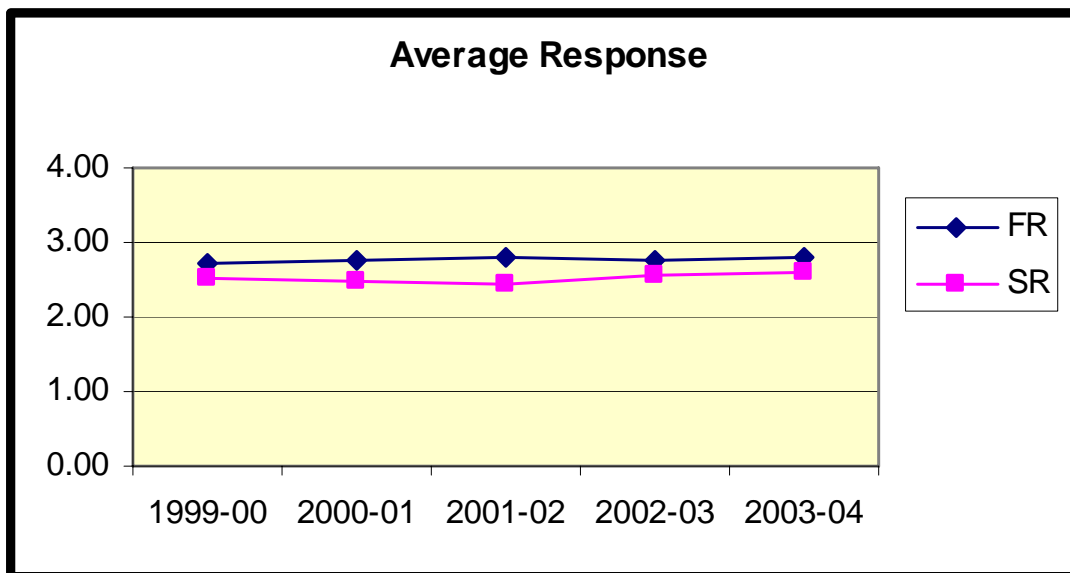


Source: National Survey of Student Engagement (2003-04)

NSSE Dashboard

To what extent does your school emphasize providing the support you need to help you succeed academically?

		Percent in Each Response Category					
Response Categories	Value of Response	Academic Class	1999-00	2000-01	2001-02	2002-03	2003-04
Very Little	1	FR	8.2%	7.1%	6.9%	4.5%	5.1%
		SR	12.4%	14.3%	14.2%	11.1%	9.7%
Some	2	FR	30.9%	30.4%	28.2%	33.5%	30.7%
		SR	39.0%	36.5%	38.9%	34.2%	35.1%
Quite A Bit	3	FR	41.4%	42.0%	44.3%	44.1%	44.5%
		SR	31.5%	36.5%	35.8%	40.7%	40.3%
Very Much	4	FR	19.5%	20.5%	20.6%	17.9%	19.7%
		SR	17.2%	12.7%	11.1%	14.1%	14.9%
			Average Response				
			1999-00	2000-01	2001-02	2002-03	2003-04
FR			2.72	2.76	2.79	2.75	2.79
SR			2.54	2.48	2.44	2.58	2.60



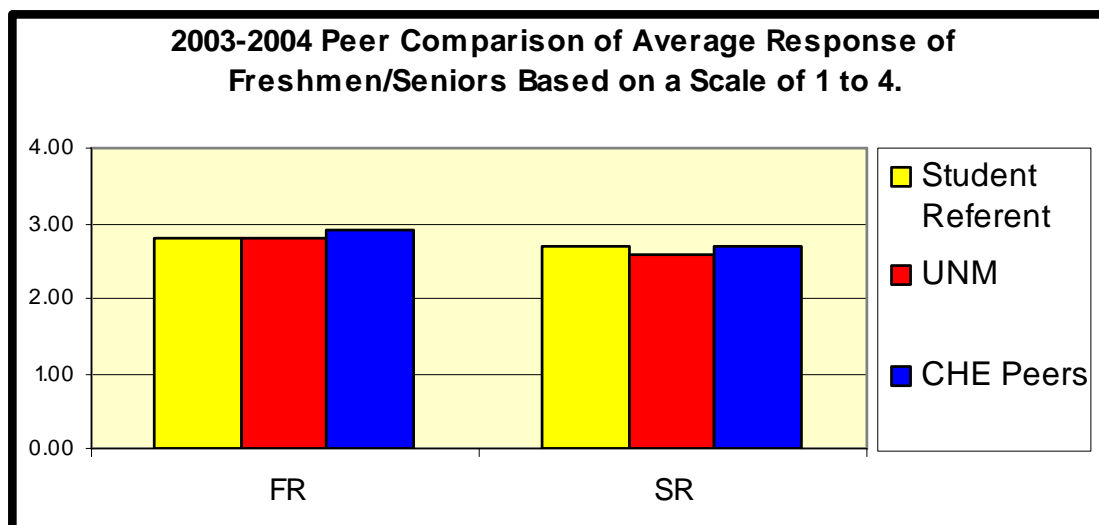
Source: National Survey of Student Engagement (2003-04)

NSSE Dashboard

To what extent does your school emphasize providing the support you need to help you succeed academically?
(Continued)

Student Referent/CHE Peer Comparison

Peer Comparison of 2003-2004 Average Response			
Academic Class	Student Referent	UNM	CHE Peers
FR	2.80	2.79	2.90
SR	2.69	2.60	2.68

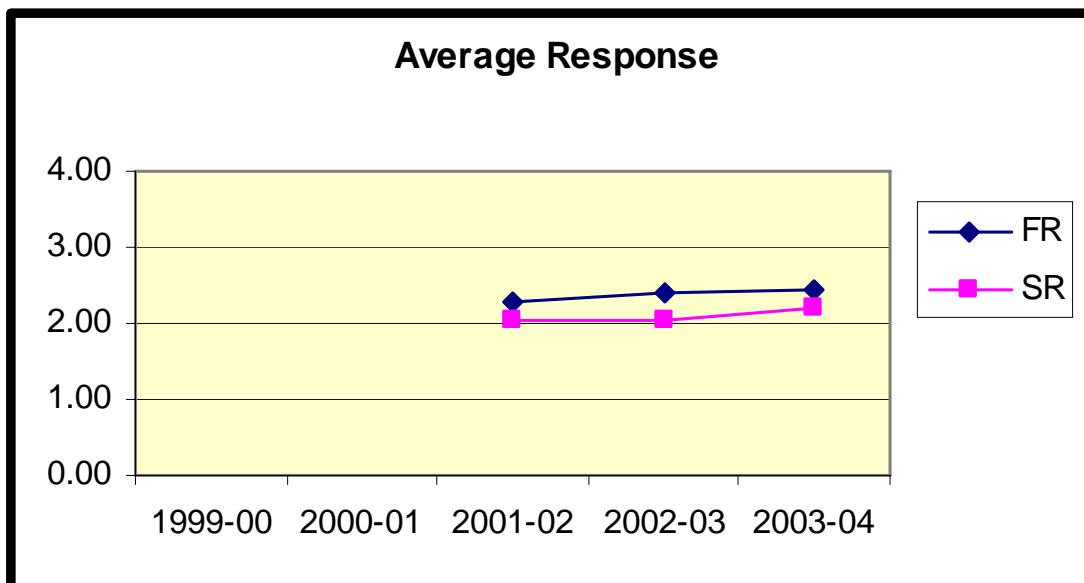


Source: National Survey of Student Engagement (2003-04)

NSSE Dashboard

To what extent does your campus emphasize attending campus events and activities (speakers, performances, athletics, etc.)?

		Percent in Each Response Category					
Response Categories	Value of Response	Academic Class	1999-00	2000-01	2001-02	2002-03	2003-04
Very Little	1	FR	No Data	No Data	18.7%	17.3%	16.9%
		SR	No Data	No Data	31.6%	28.6%	23.4%
Some	2	FR	No Data	No Data	45.4%	33.0%	34.6%
		SR	No Data	No Data	38.9%	46.2%	44.1%
Quite A Bit	3	FR	No Data	No Data	25.2%	41.9%	35.8%
		SR	No Data	No Data	21.6%	19.1%	22.0%
Very Much	4	FR	No Data	No Data	10.7%	7.8%	12.6%
		SR	No Data	No Data	7.9%	6.0%	10.5%
		Average Response					
			1999-00	2000-01	2001-02	2002-03	2003-04
		FR			2.28	2.40	2.44
		SR			2.06	2.03	2.20



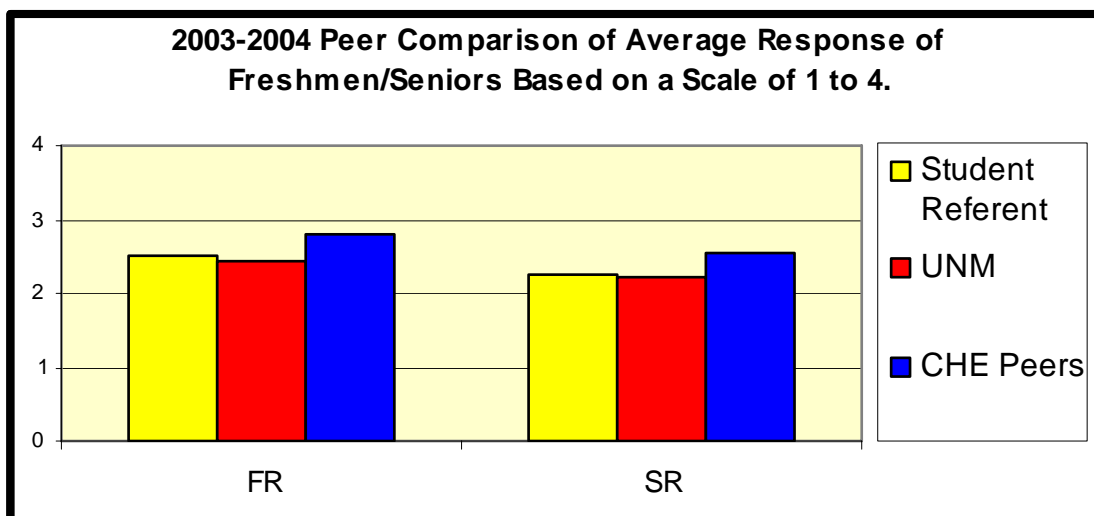
Source: National Survey of Student Engagement (2003-04)

NSSE Dashboard

To what extent does your campus emphasize attending campus events and activities (speakers, performances, athletics, etc.)? *(Continued)*

Student Referent/CHE Peer Comparison

Peer Comparison of 2003-2004 Average Response			
Academic Class	Student Referent	UNM	CHE Peers
FR	2.52	2.44	2.79
SR	2.25	2.20	2.54

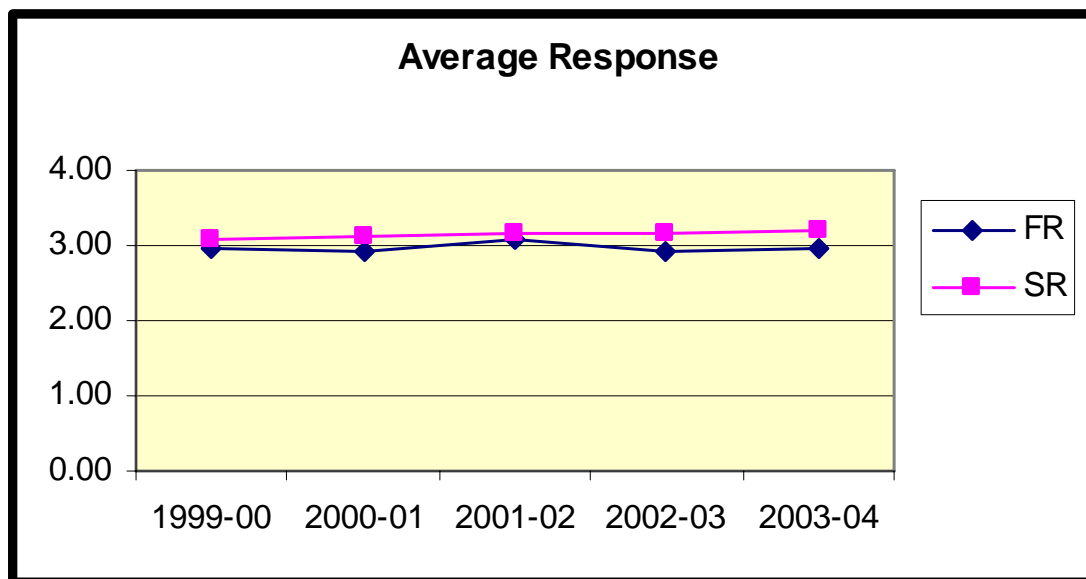


Source: National Survey of Student Engagement (2003-04)

NSSE Dashboard

Has your campus experience contributed to your knowledge, skills, and personal development in the area of critical and analytical thinking?

		Percent in Each Response Category					
Response Categories	Value of Response	Academic Class	1999-00	2000-01	2001-02	2002-03	2003-04
Very Little	1	FR	3.7%	4.9%	1.5%	3.4%	2.8%
		SR	4.1%	1.2%	1.1%	3.0%	2.1%
Some	2	FR	25.7%	23.2%	23.3%	25.1%	22.9%
		SR	20.3%	20.9%	20.0%	16.7%	15.1%
Quite A Bit	3	FR	42.7%	46.4%	42.4%	48.6%	48.2%
		SR	37.2%	42.6%	39.5%	42.9%	42.3%
Very Much	4	FR	28.0%	25.4%	32.8%	22.9%	26.1%
		SR	38.3%	35.2%	39.5%	37.4%	40.5%
		Average Response					
			1999-00	2000-01	2001-02	2002-03	2003-04
		FR	2.95	2.92	3.06	2.91	2.98
		SR	3.10	3.12	3.17	3.15	3.21



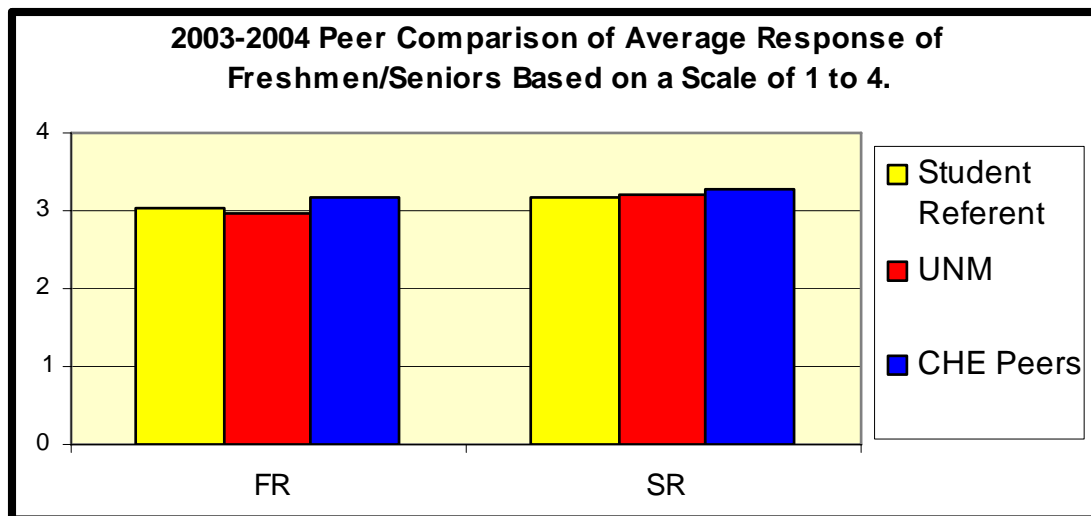
Source: National Survey of Student Engagement (2003-04)

NSSE Dashboard

Has your campus experience contributed to your knowledge, skills, and personal development in the area of critical and analytical thinking? *(Continued)*

Student Referent/CHE Peer Comparison

Peer Comparison of 2003-2004 Average Response			
Academic Class	Student Referent	UNM	CHE Peers
FR	3.02	2.98	3.17
SR	3.17	3.21	3.28



Source: National Survey of Student Engagement (2003-04)