

What is an Infectious Disease?

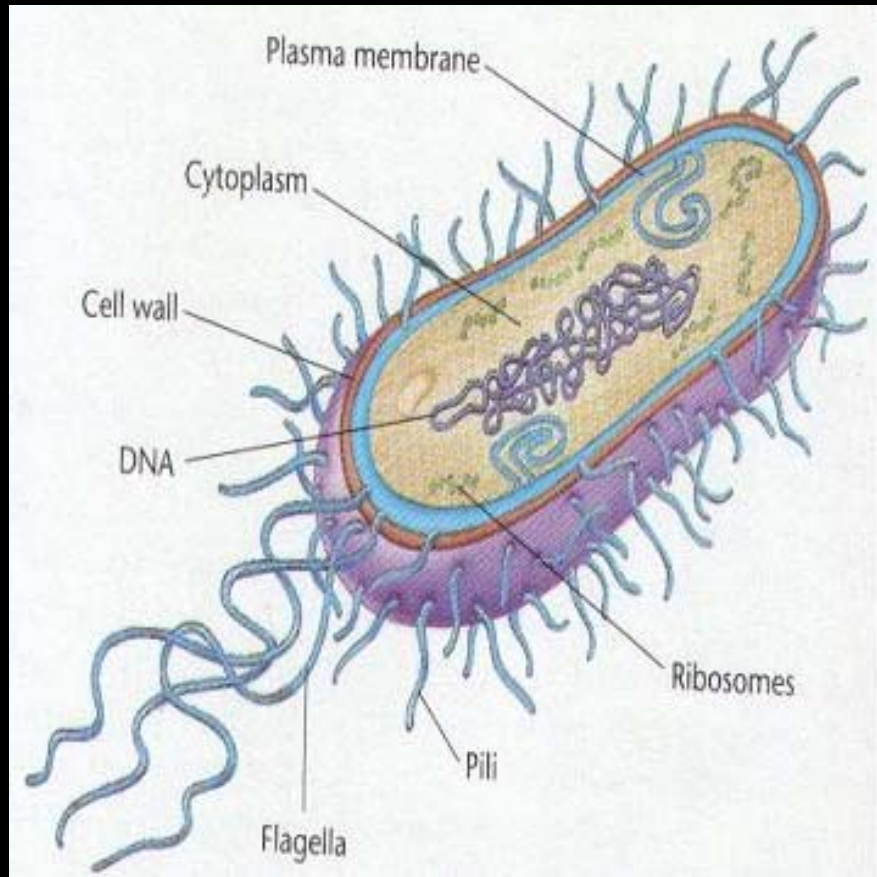
[Click Here](#)

Disease.mp4

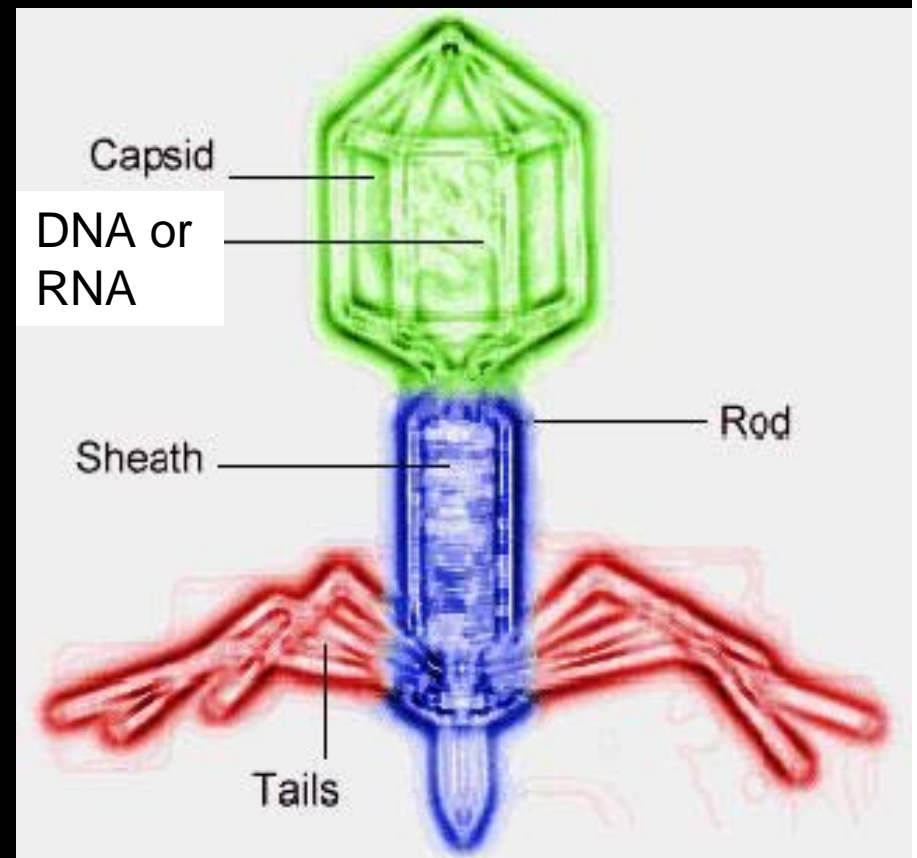
What is an Infectious Disease?

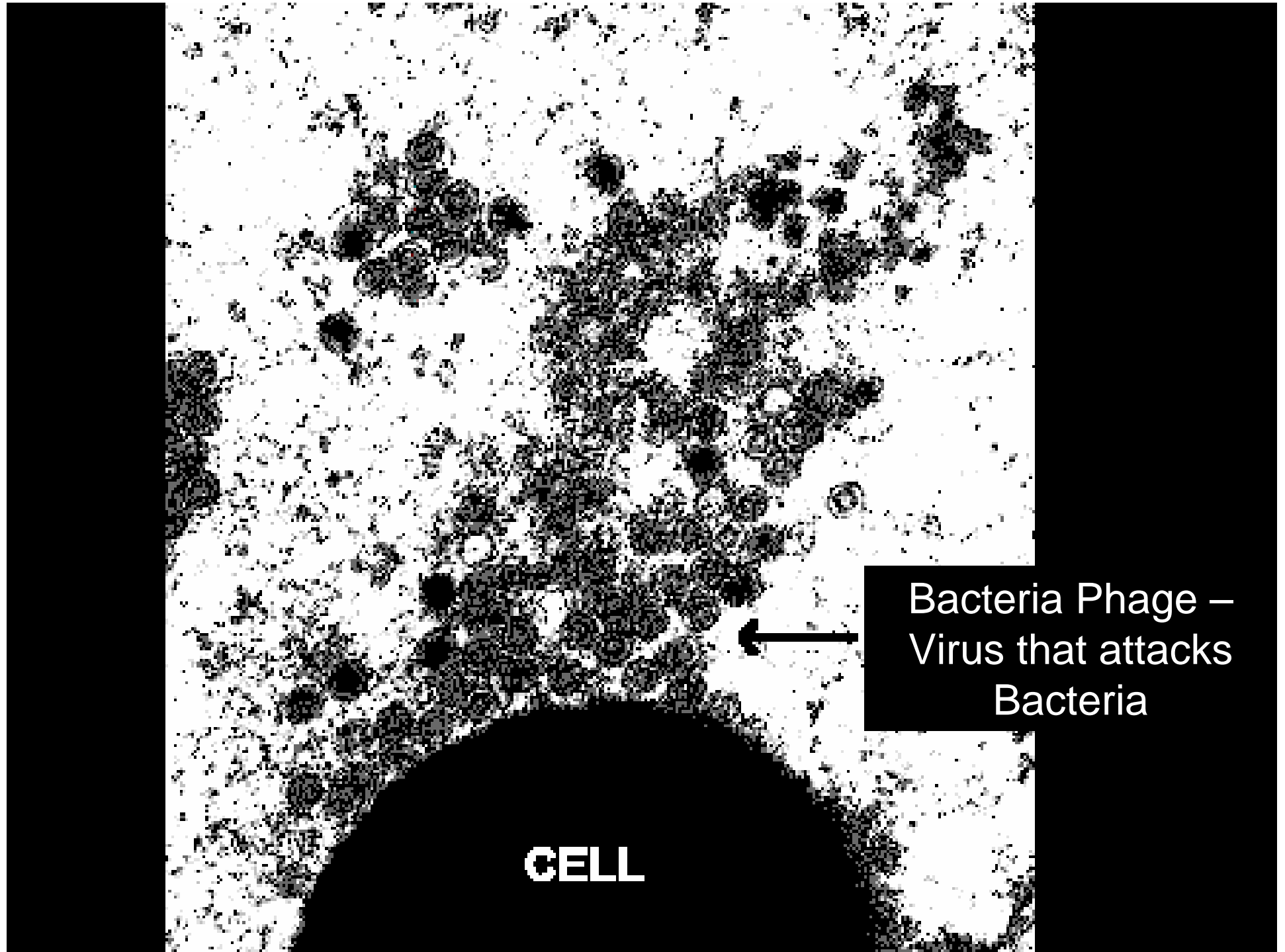
- Any disease caused by germs that can spread from one person to another.
- Germs include Bacteria and Viruses
 - They are micro-organisms; “Tiny Living Beings”

Bacteria



Virus

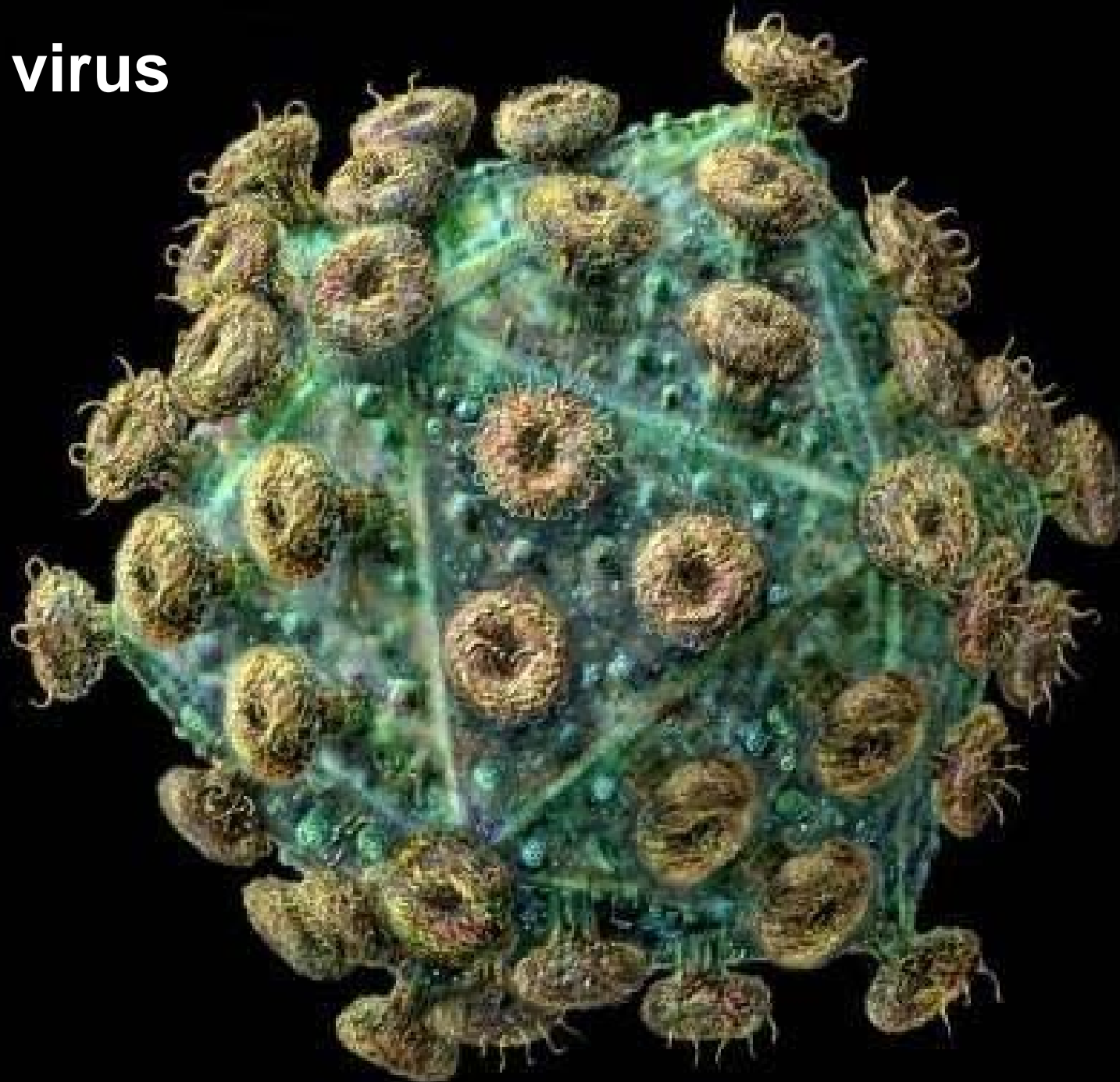




CELL

**Bacteria Phage –
Virus that attacks
Bacteria**

HIV virus

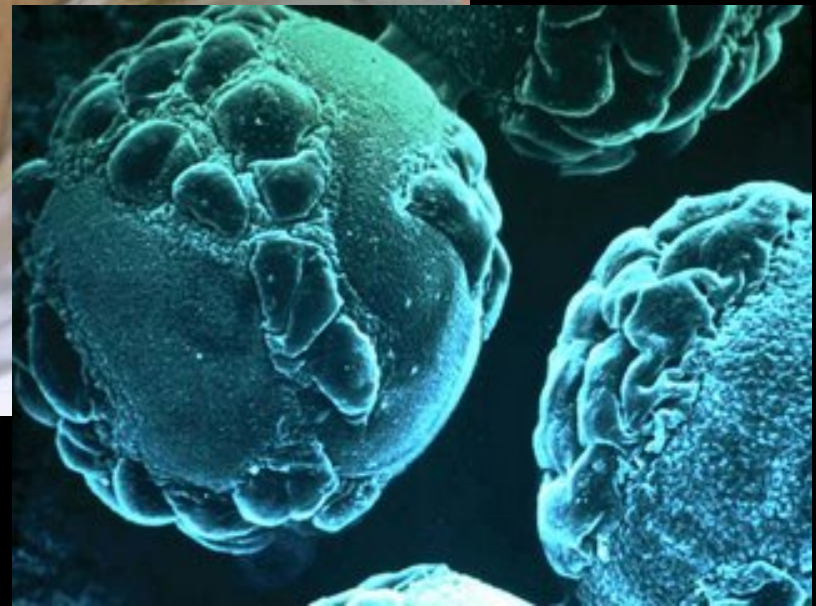


Influenza virus

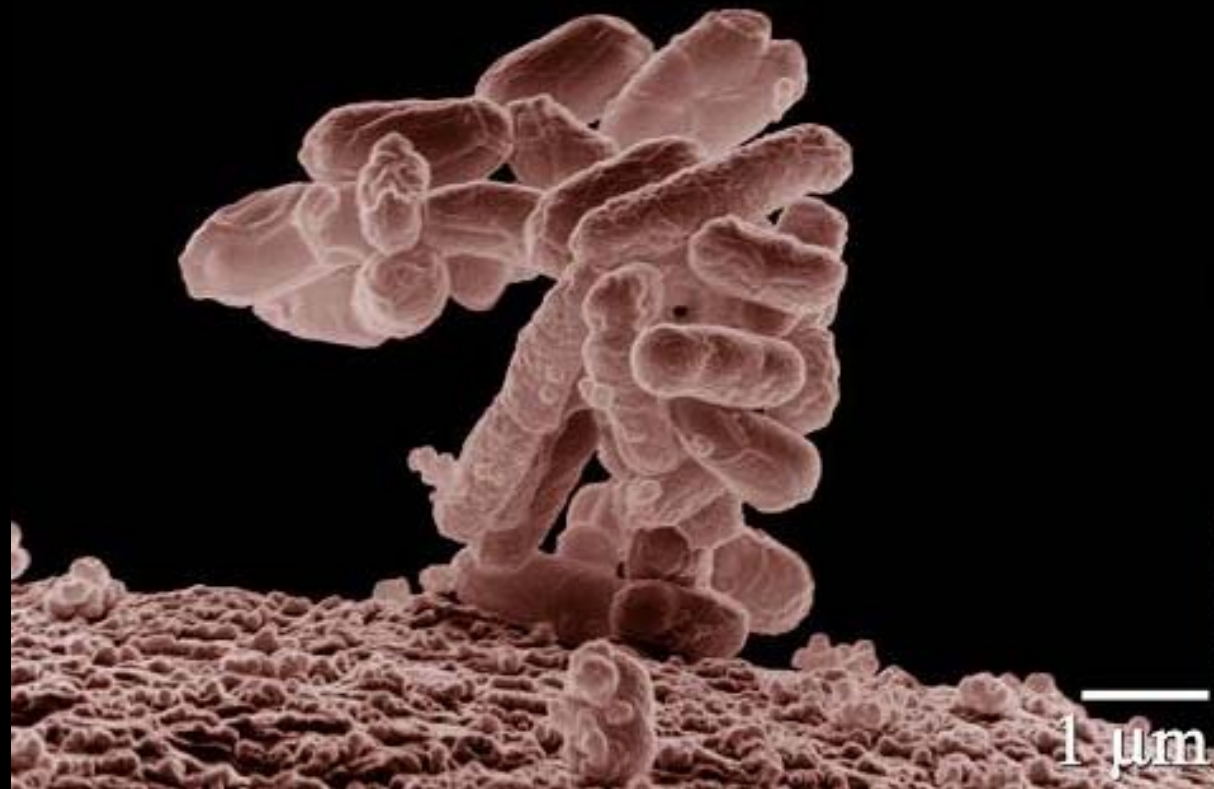


3D SCIENCE.COM

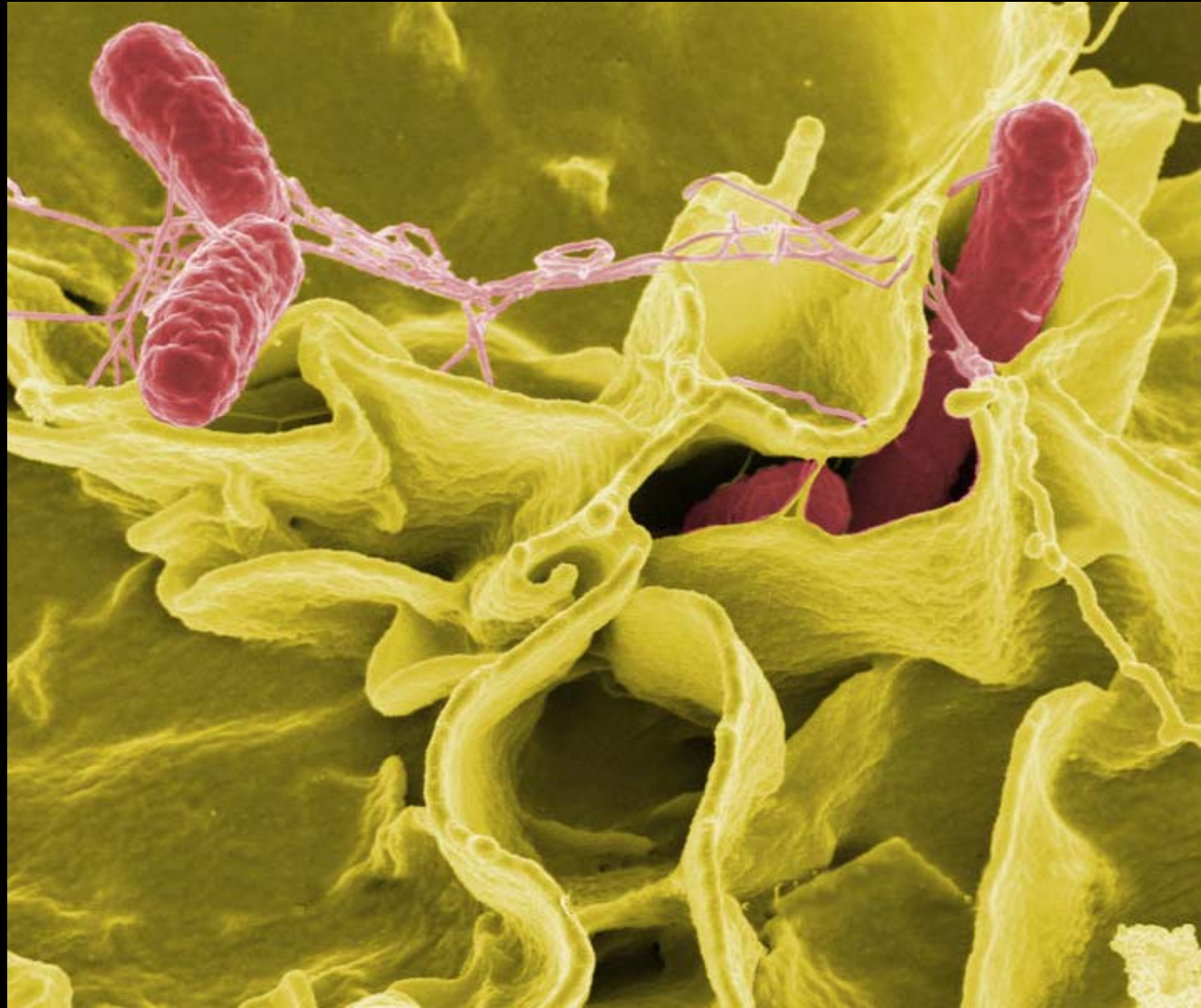
Varicella Zoster Virus



Escherichia coli - bacteria



Salmonella bacteria attacking human cells



Causes Typhoid Fever and other illnesses

Other Diseases:

- Rhinoviruses and coronaviruses – causes the common cold
- Streptococcus pyogenes – Bacteria that causes strep throat
- Rabies Virus
- Hantavirus
- Pink eye – caused by viruses or bacteria

Are all micro-organisms Bad?

Are all micro-organisms Bad?

- NO! Some are even good for us!

Can We prevent All Diseases?

Can We prevent All Diseases?

- NO!
- Vaccines try to prevent both Bacterial and Viral Diseases.
- If you are infected:
 - Bacterial infections can be given antibiotics
 - Viruses must be fought off by your body alone

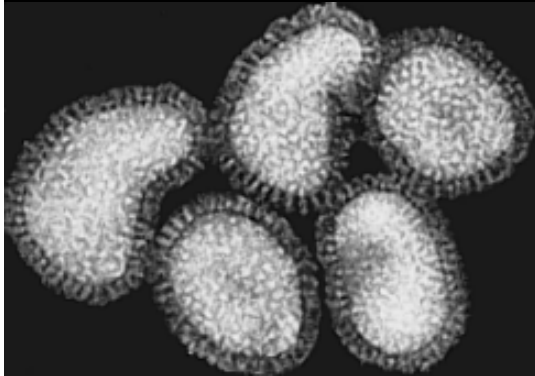
Does everyone get affected to
the same degree?

Does everyone get affected to the same degree?

- NO!
- Each of our bodies has their own “Army” to fight off infections.

How are Diseases Spread?

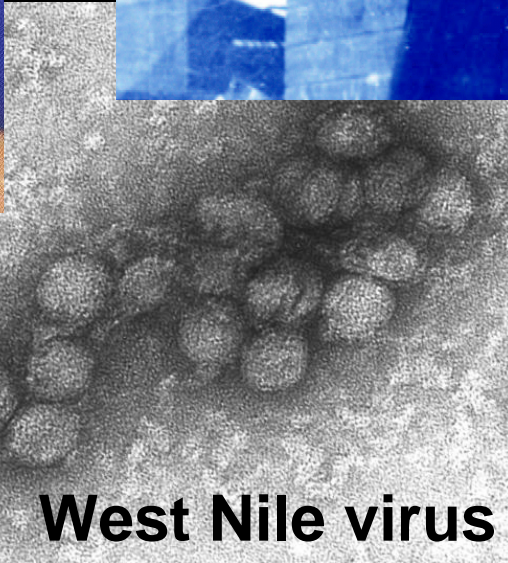
How do you “catch” a virus?



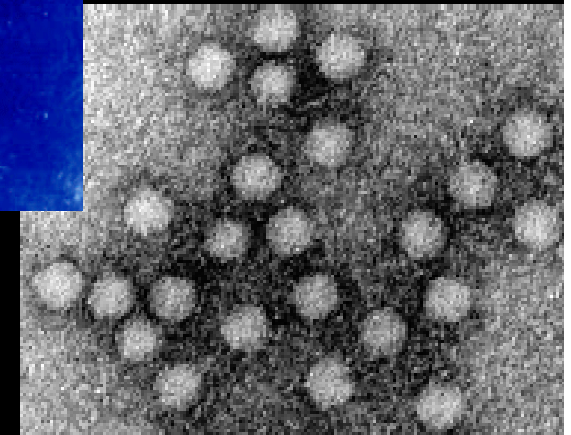
Influenza virus



Parvo virus



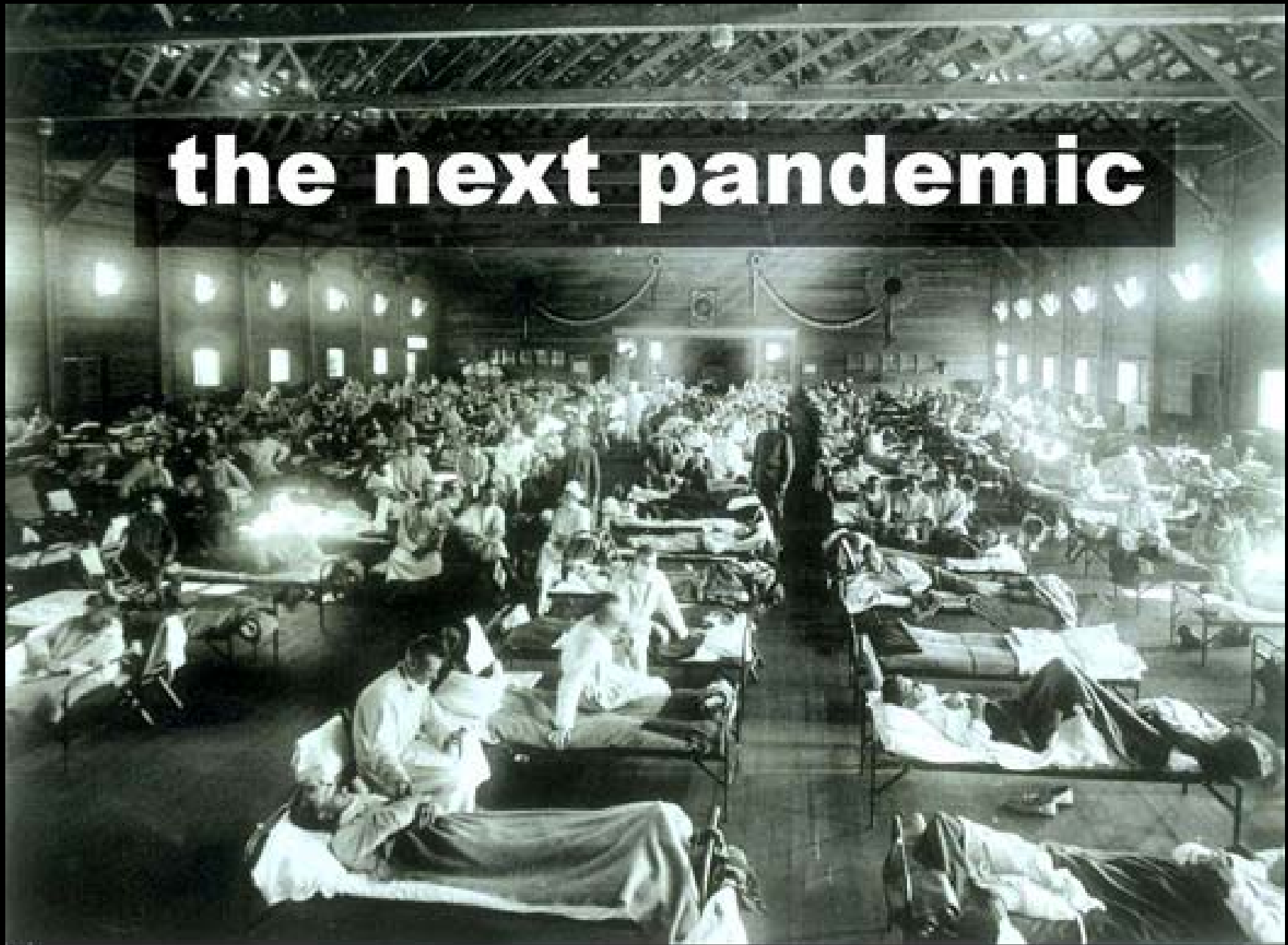
West Nile virus



How are Diseases Spread?

- There are 3 main ways:
 - Food/Water
 - Air
 - Direct Contact

the next pandemic



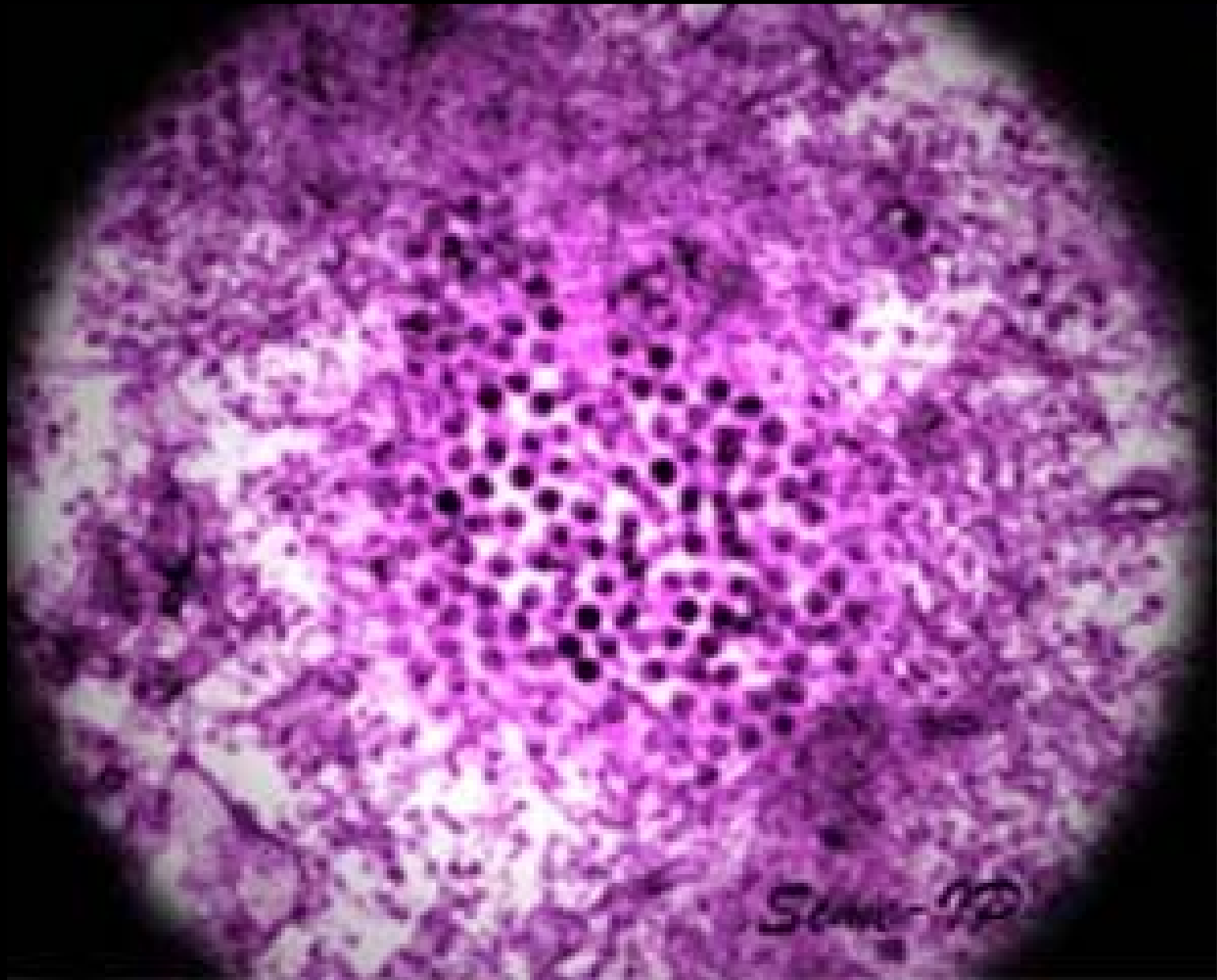
1918 Influenza: 20,000,000 died

Transmitted through Air

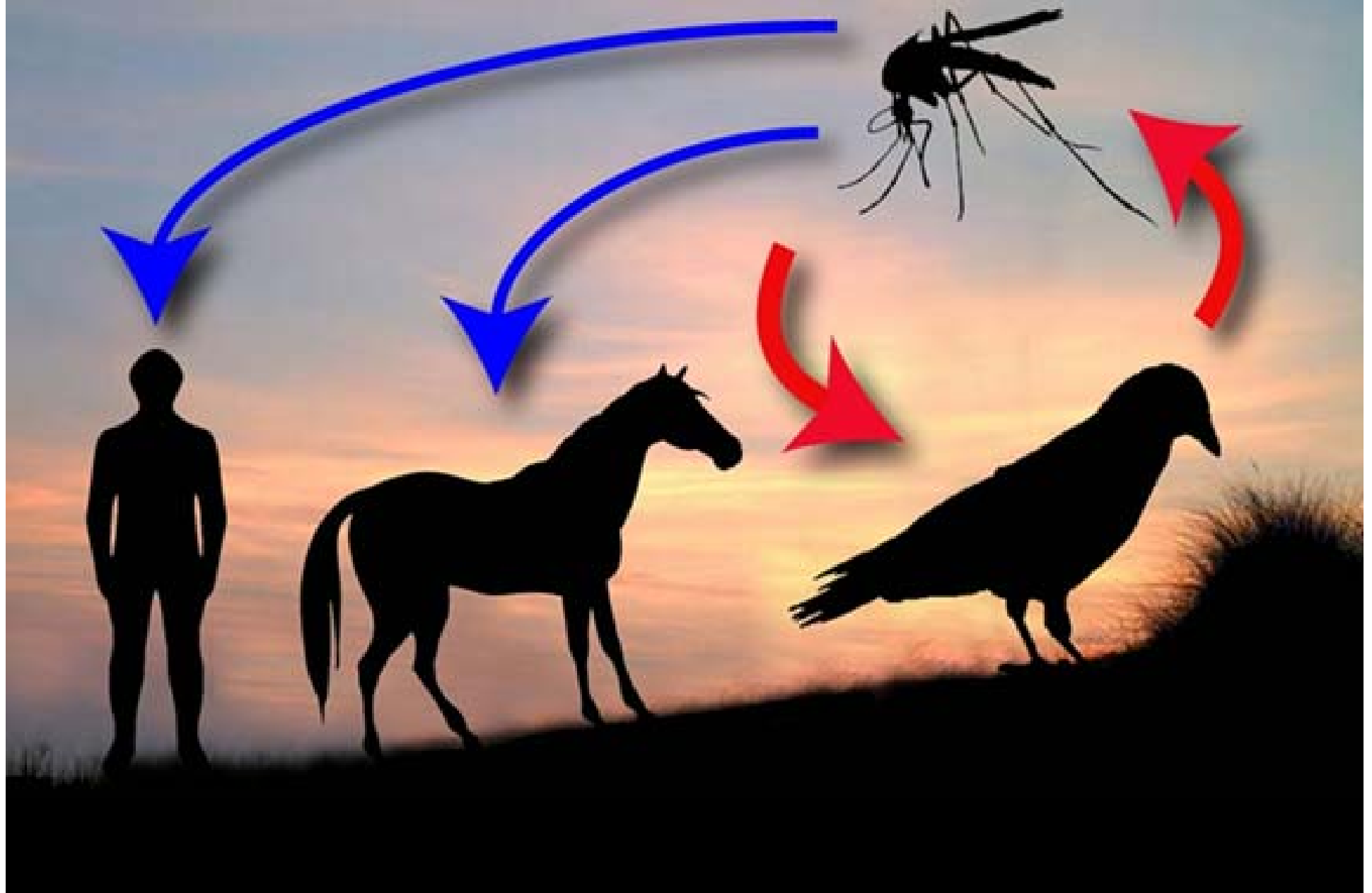
Dangerous stuff!



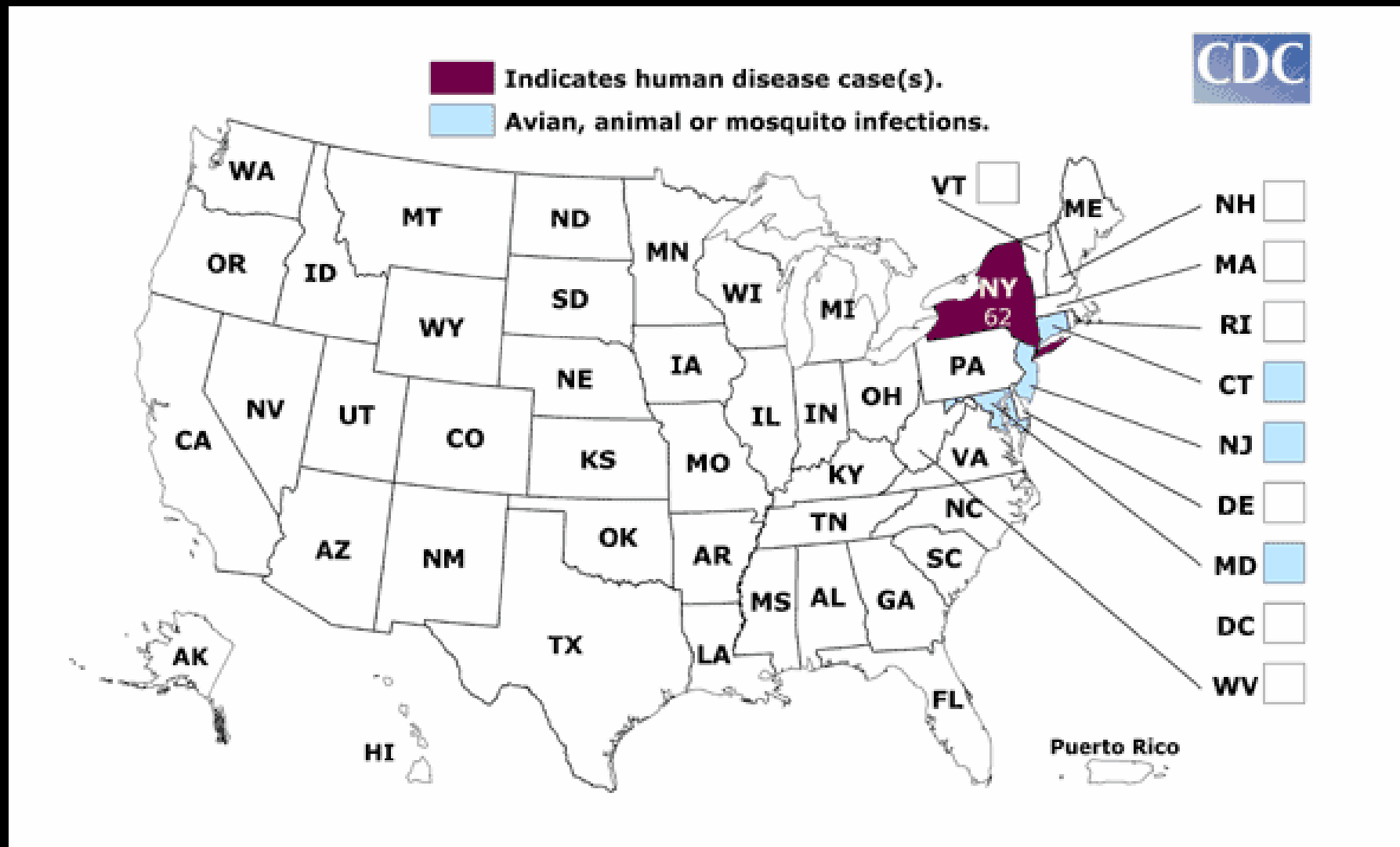
West Nile virus



West Nile Virus Transmission Cycle



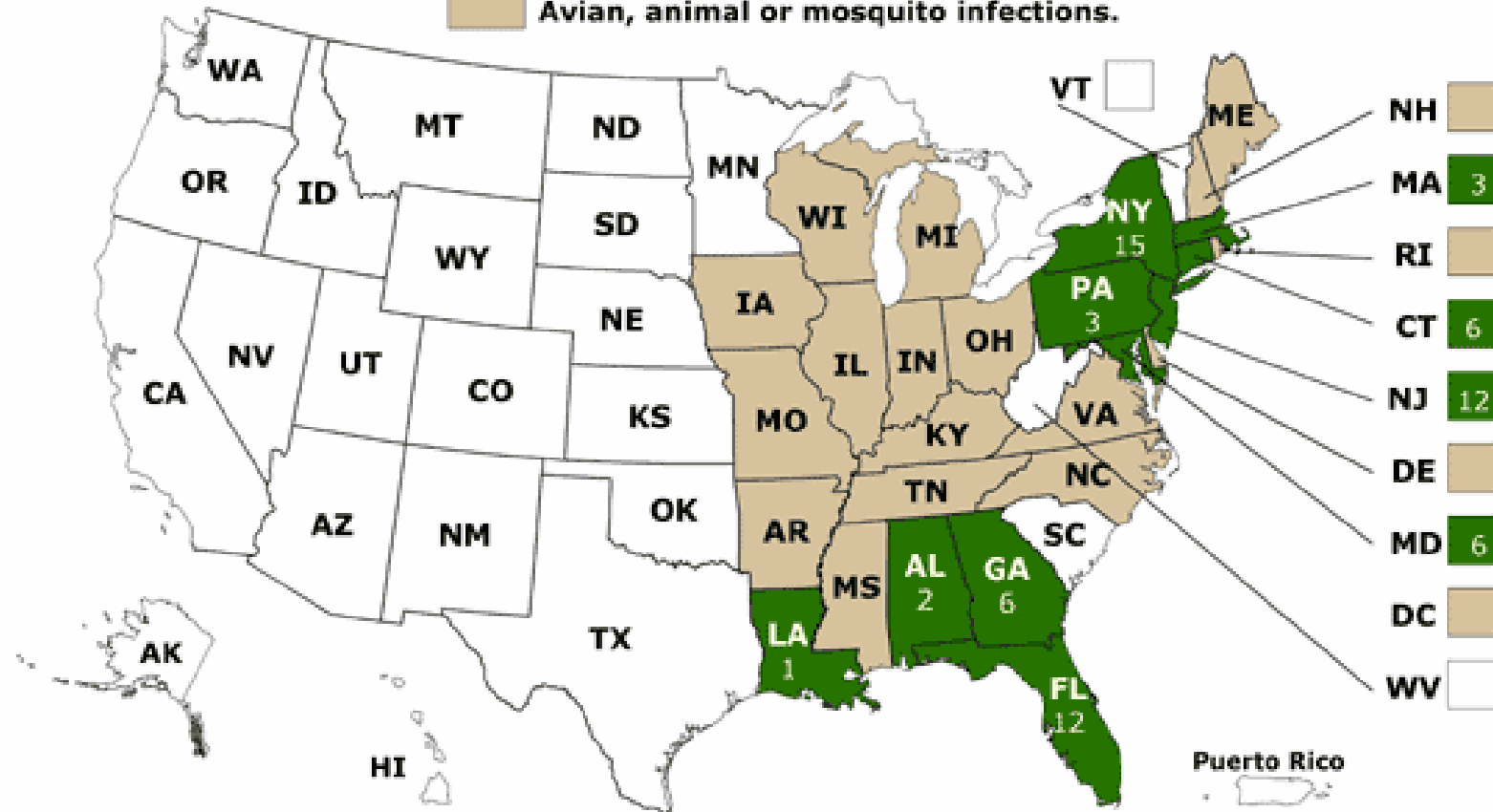
Spread of West Nile Virus- 1999



2001



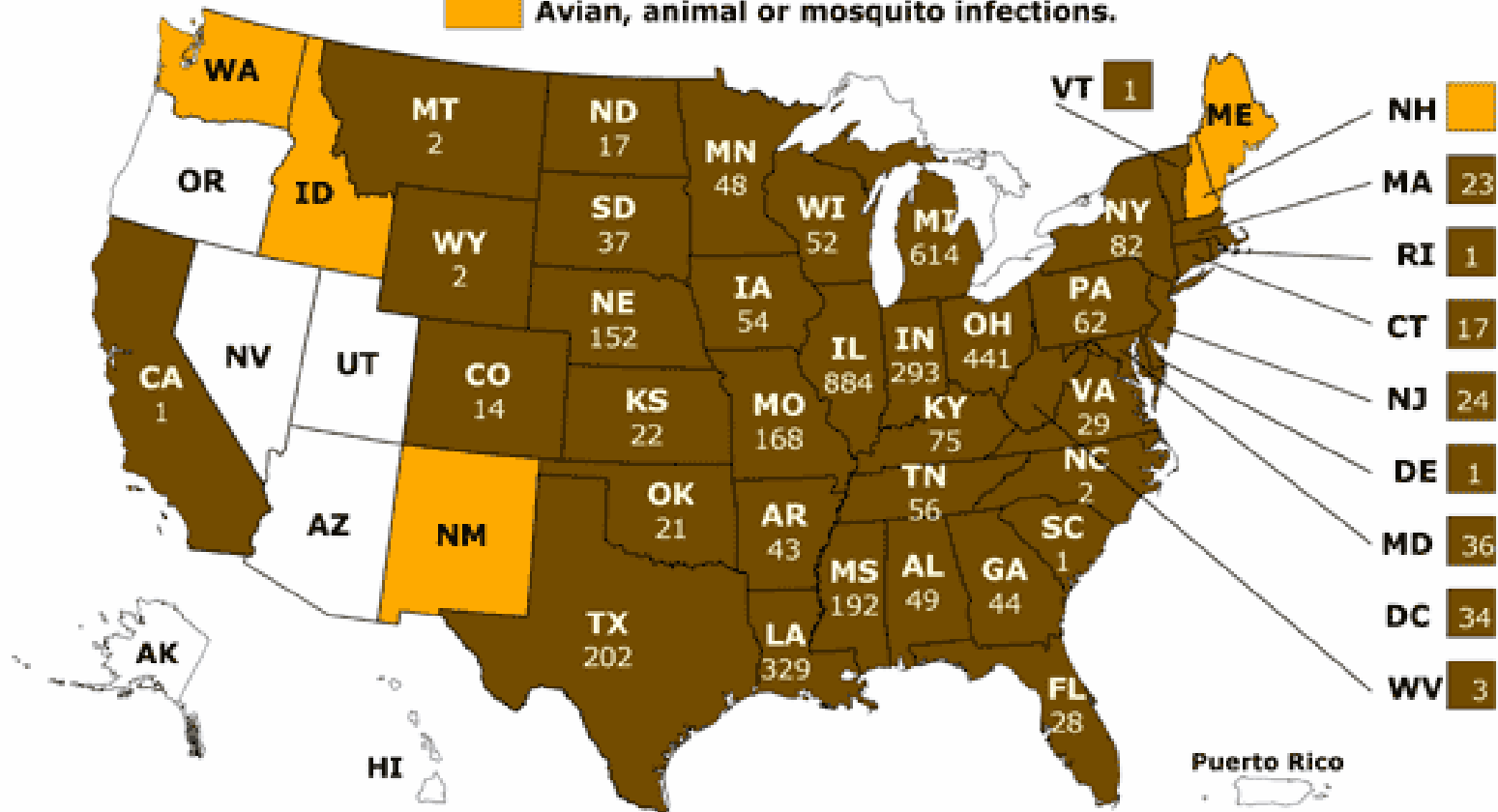
■ Indicates human disease case(s).
■ Avian, animal or mosquito infections.



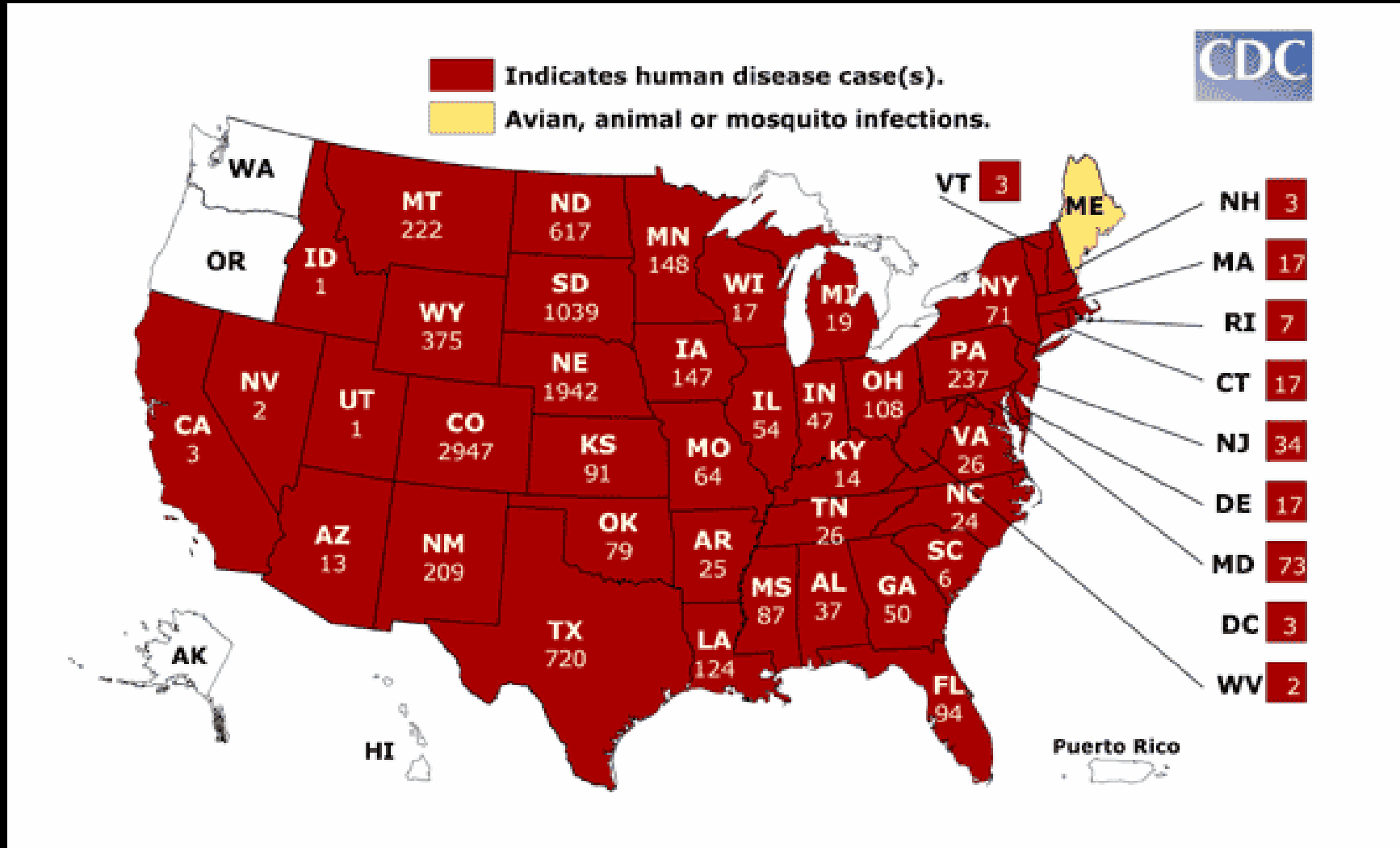
2002



Indicates human disease case(s).
Avian, animal or mosquito infections.



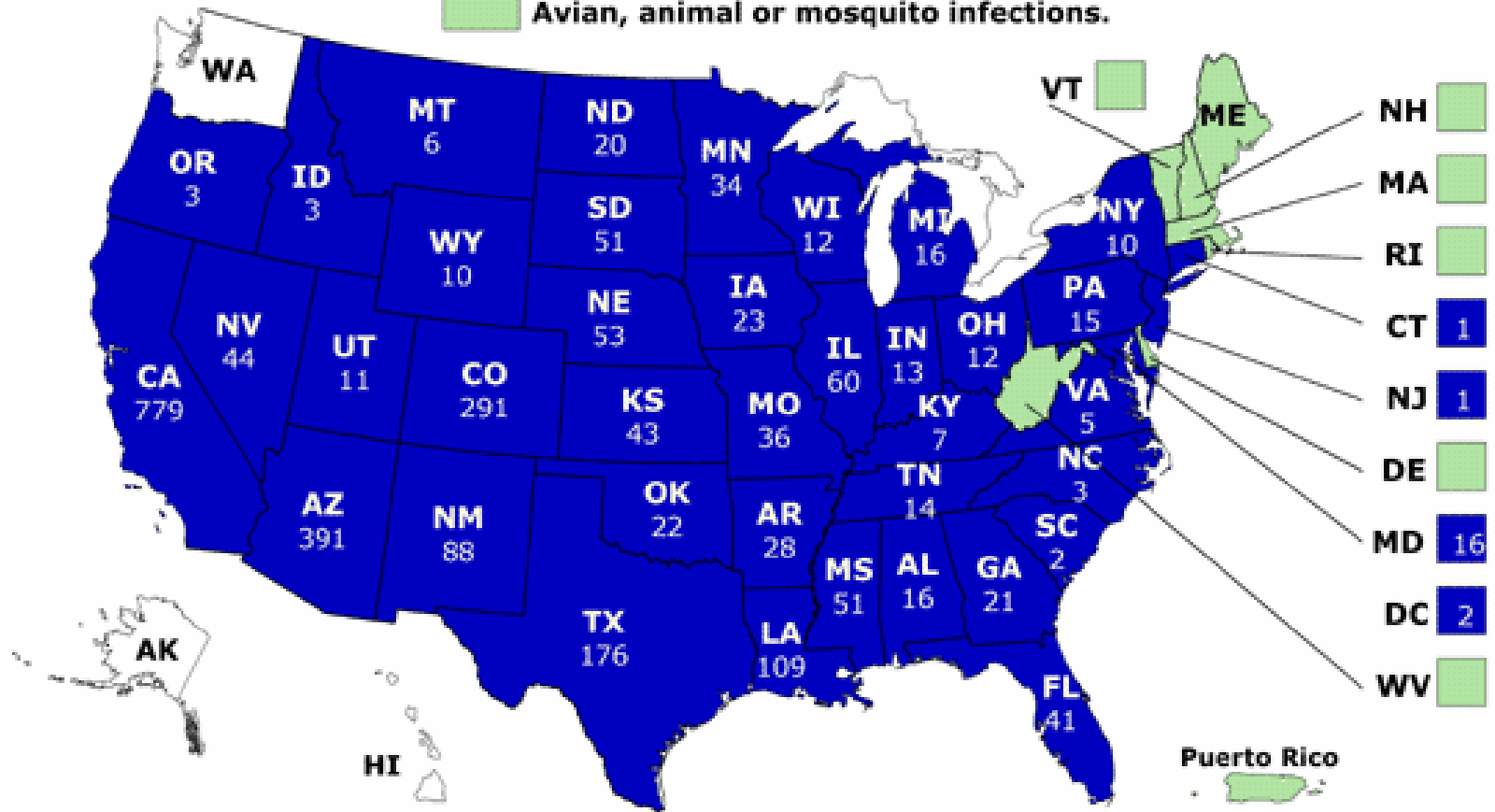
2003



2004





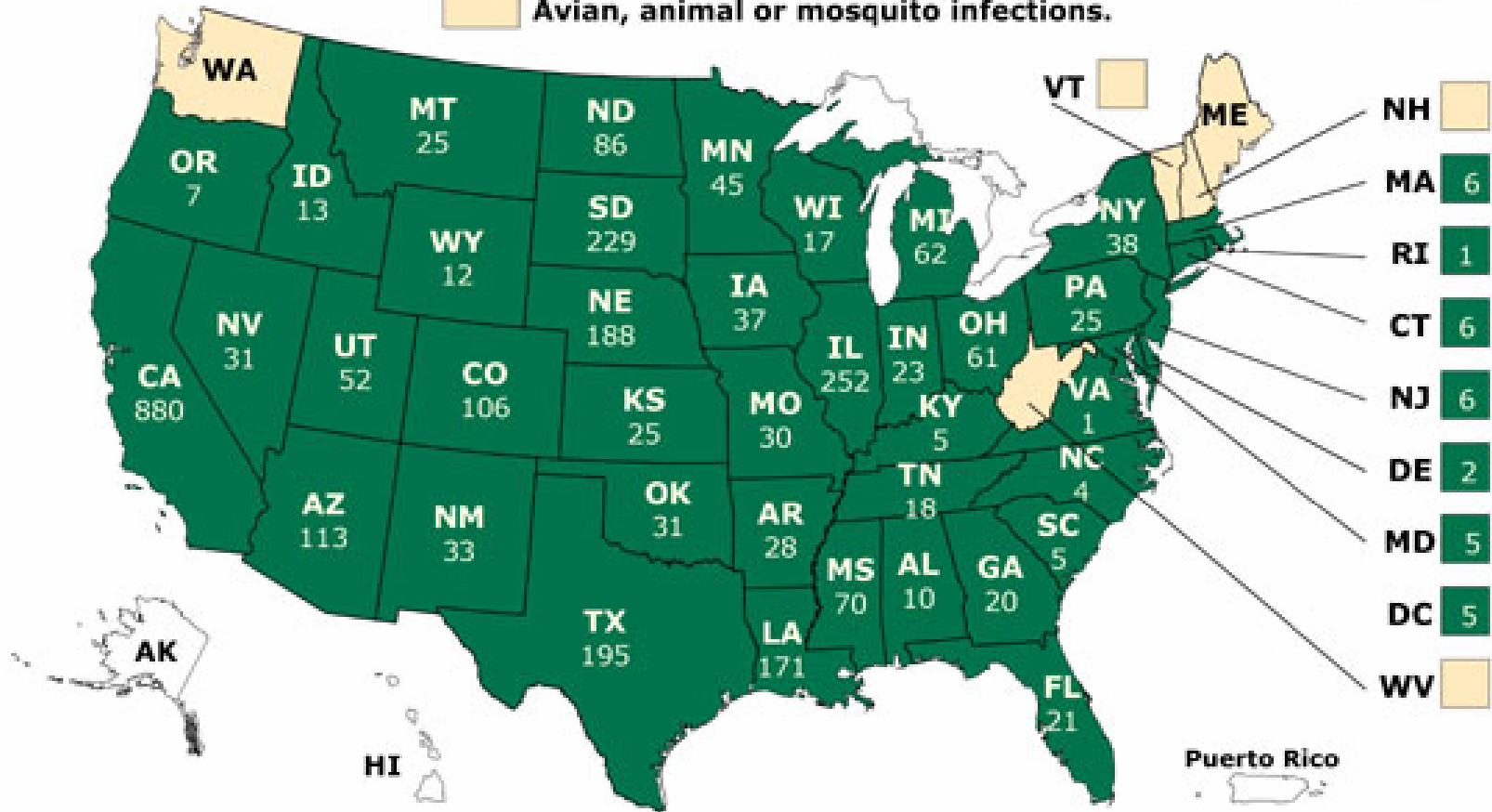
■ Indicates human disease case(s).
■ Avian, animal or mosquito infections.



2005


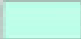


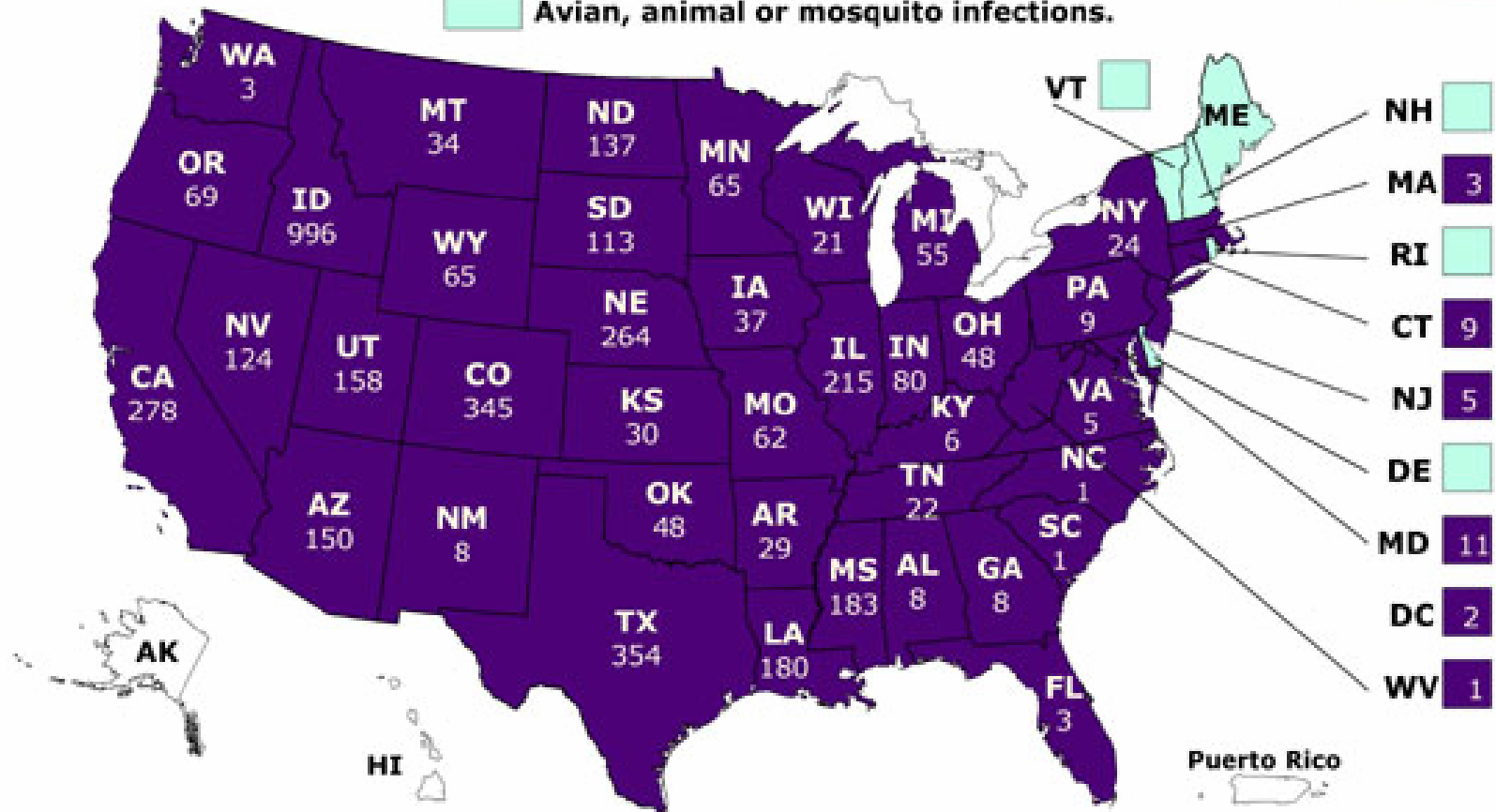
 Indicates human disease case(s).
 Avian, animal or mosquito infections.



2006

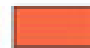



 Indicates human disease case(s).
 Avian, animal or mosquito infections.



2007



 Indicates human disease case(s).
 Avian, animal or mosquito infections.

