

Supporting Information

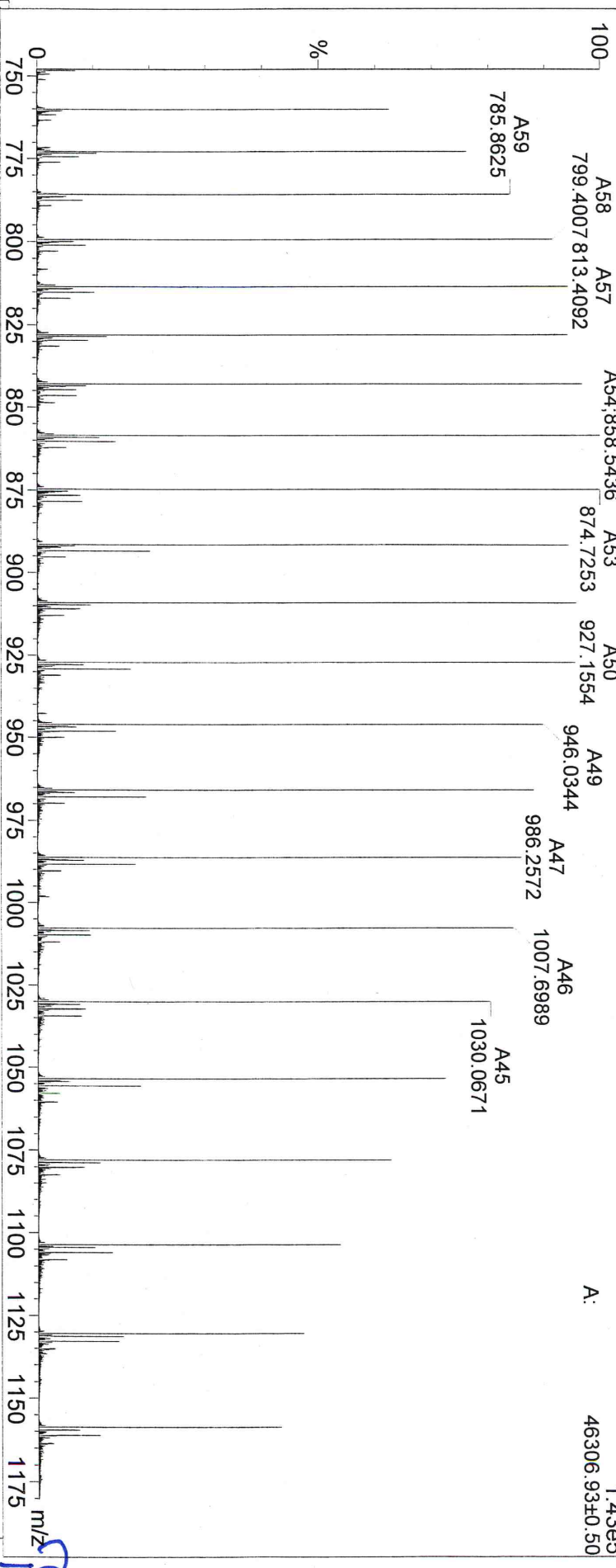
L-Canavanine Is a Time-Controlled Mechanism Based Inhibitor of Pseudomonas Aeruginosa Arginine Deiminase

Xuefeng Lu, Ling Li, Xiaohua Feng, Debra Dunaway-Mariano, Patrick S. Mariano*
Department of Chemistry, University of New Mexico, Albuquerque, NM 87131

Table of Contents

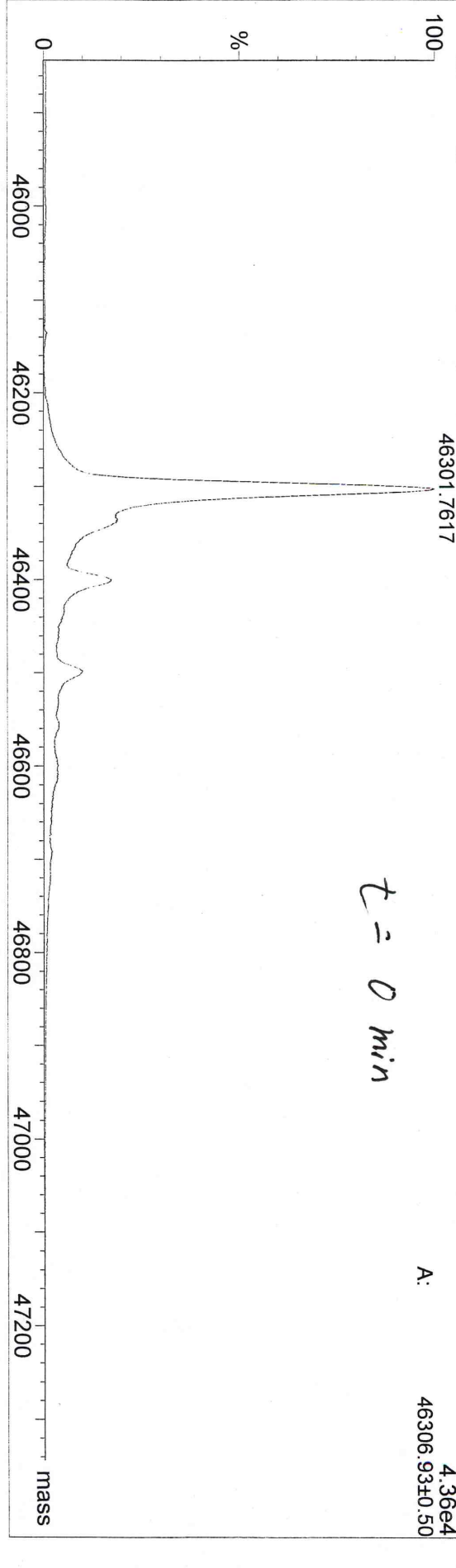
S-2 – S-8....Mass spectra of incubation mixtures containing 10 μ M PaADI and 1 mM L-canavanine after times of 0 min, 16 s, 10 min, 20 min, 89.5 min, 3 h and 12 h.

0106_050905_ESI+VE 261 (5.318) AM (Top, 4, Ar, 100000.0, 556.28, 0.70, LS 10); Sm (Mn, 2x2.00); Sb (20, 15.00); Cm (255:299) 1: TOF MS ES+ 1.43e5 46306.93±0.50



Organic 0106_050905_ESI+VE 261 (5.318) Tr (500:2000, 0.13, Mid); Sb (20, 15.00); Cm (255:299) 1: TOF MS ES+ 4.36e4 46306.93±0.50

t = 0 min



27-Sep-2005; 11:20:56

UNM Mass Spectrometry

392_092705_ESI 287 (5.849) Sb (1,40.00); Cm (281:315)

1: TOF MS ES+

A54:858.5311

A: 46305.00±0.57

813.3887

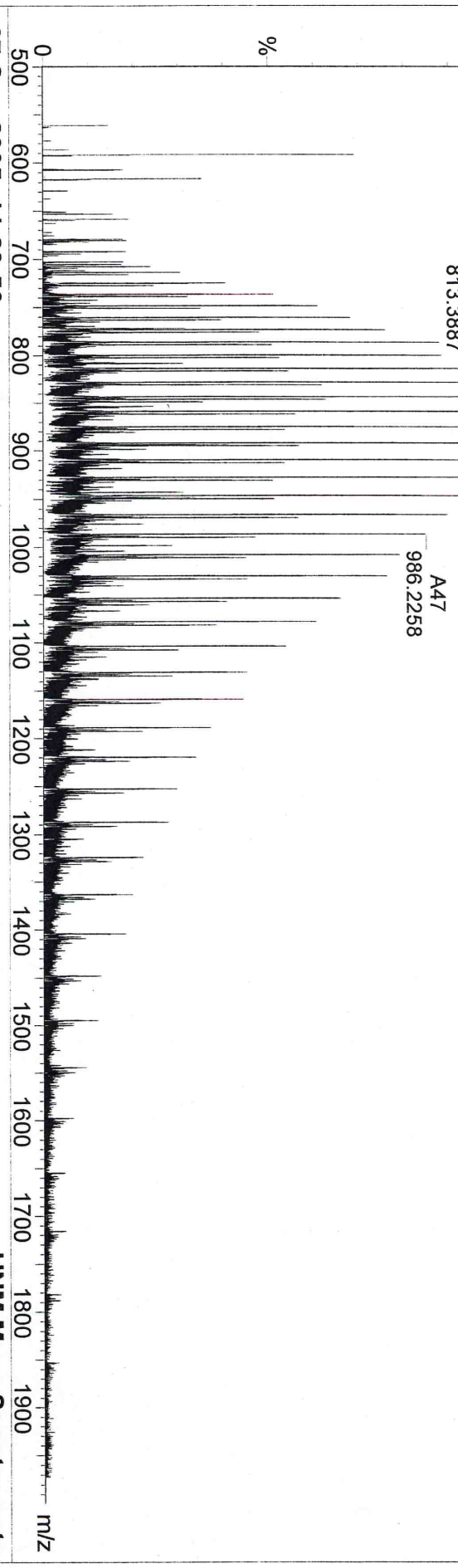
A57

946.0048

A49

986.2258

A47



27-Sep-2005; 11:20:56

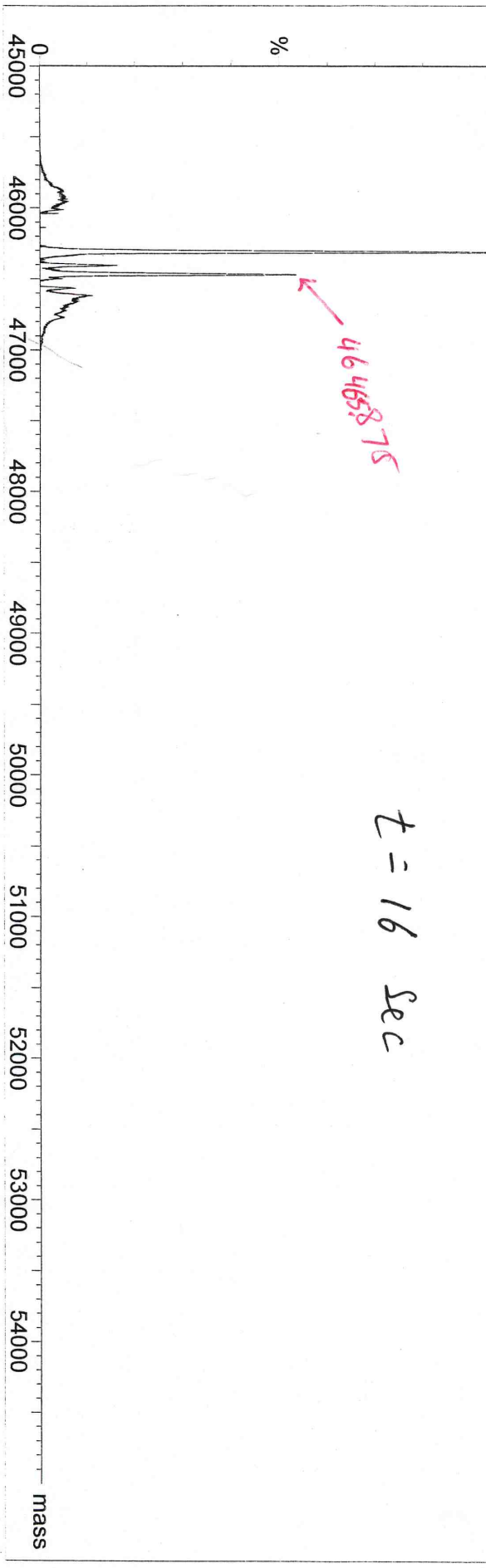
UNM Mass Spectrometry

392_092705_ESI 287 (5.849) Tr (500:2000, 0.13, Mid); Sb (1,40.00); Cm (281:315)

1: TOF MS ES+

46305.3750

A: 46305.00±0.57



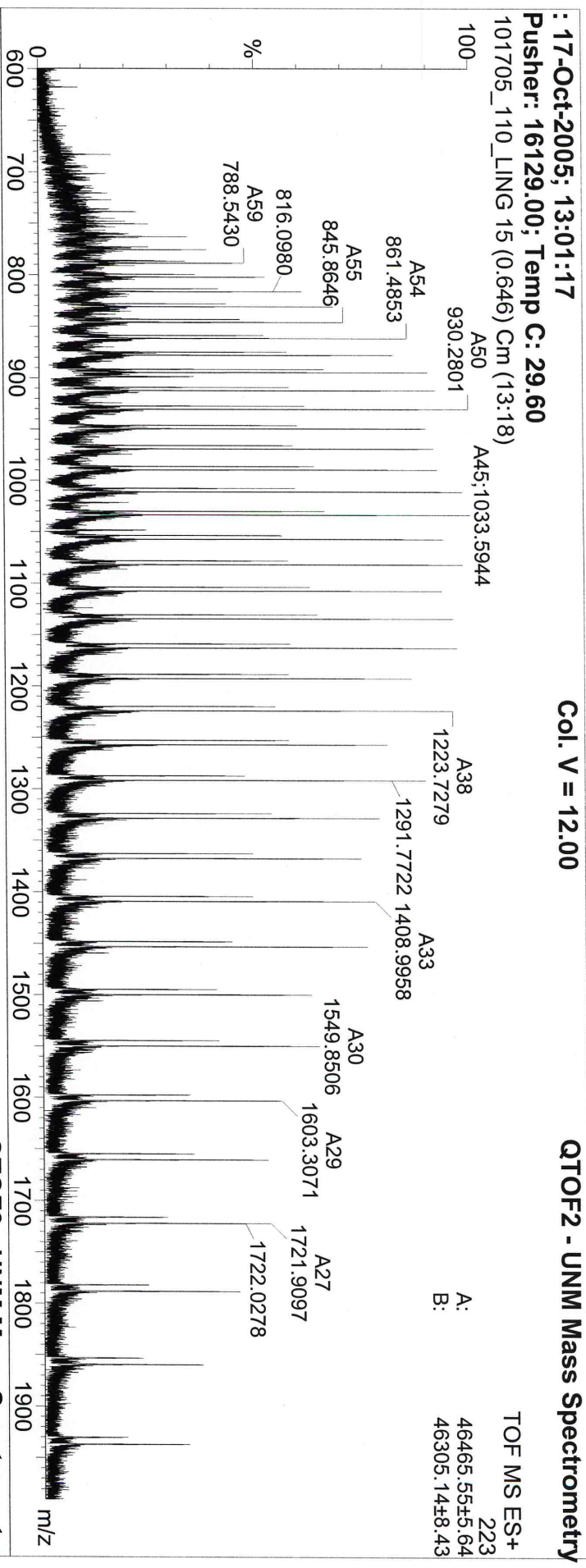
t = 16 Sec

Handwritten signature or initials in blue ink.

Down

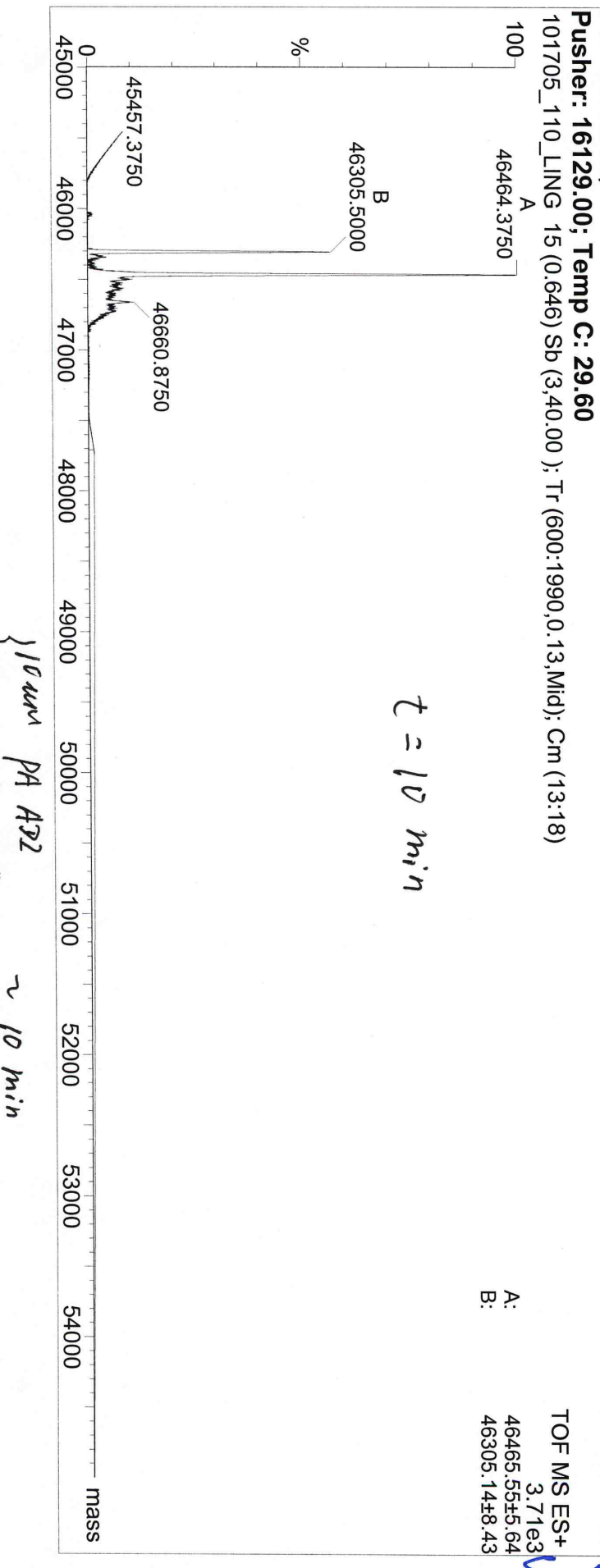
Col. V = 12.00

QTOF2 - UNM Mass Spectrometry



Col. V = 12.00

QTOF2 - UNM Mass Spectrometry



t = 10 min

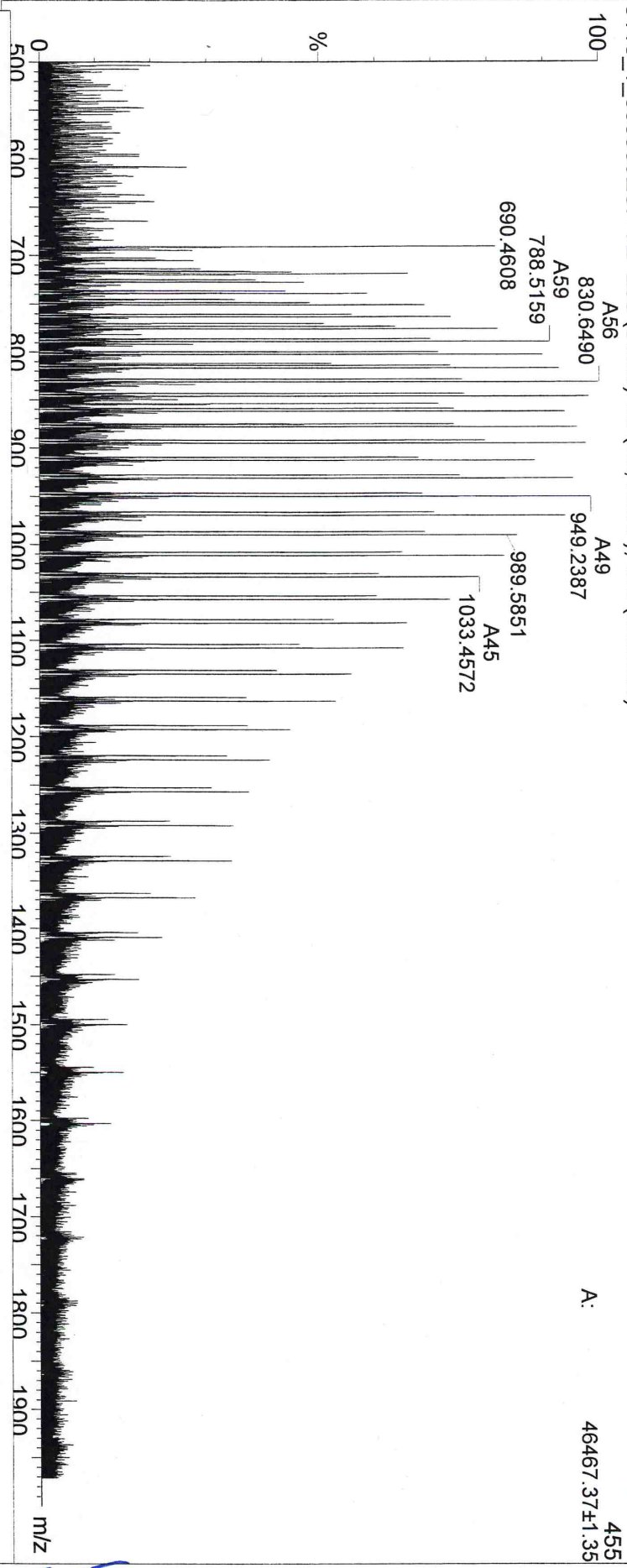
10 min PA A32
1 min Cammanille

~ 10 min

Handwritten signature/initials

0110_1_050905ESI+VE 256 (5.226) Sb (20.15.00); Cm (253:290)

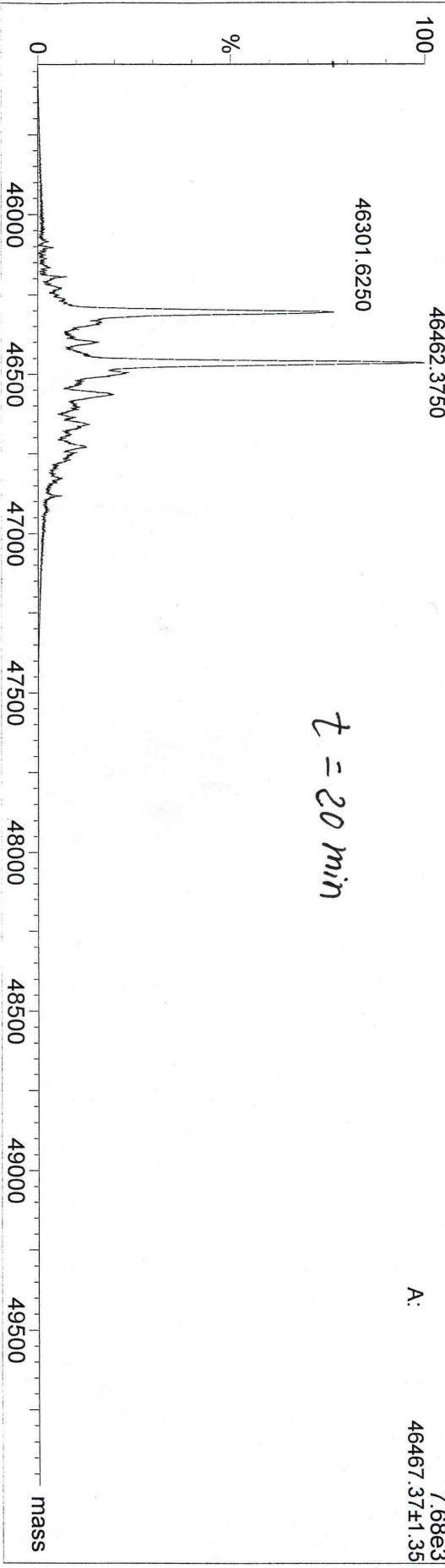
1: TOF MS ES+ 455



Handwritten initials

0110_1_050905ESI+VE 256 (5.226) Tr (500:2000,0.13,Mid); Sb (20.15.00); Cm (253:290)

1: TOF MS ES+ 7.68e3



t = 20 min

A: 46467.37±1.35

89.5 min

: 17-Oct-2005; 12:23:41

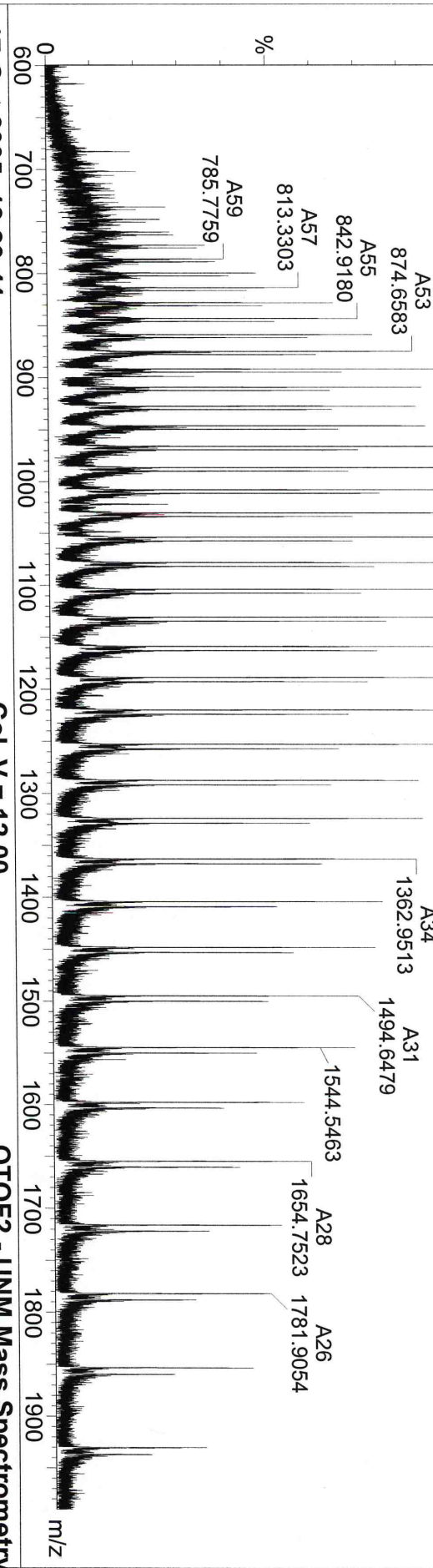
Col. V = 12.00

QTOF2 - UNM Mass Spectrometry

Pusher: 16129.00; Temp C: 28.97

101705_190_LING 16 (0.689) Cm (14:19)

Retention Time (min)	Mass (m/z)	Abundance (%)
891.4893	46307.10±9.10	100
1030.0173	46463.32±9.63	~10
1252.4877	~10	~10
1362.9513	~10	~10
1494.6479	~10	~10
1544.5463	~10	~10
1654.7523	~10	~10
1781.9054	~10	~10



: 17-Oct-2005; 12:23:41

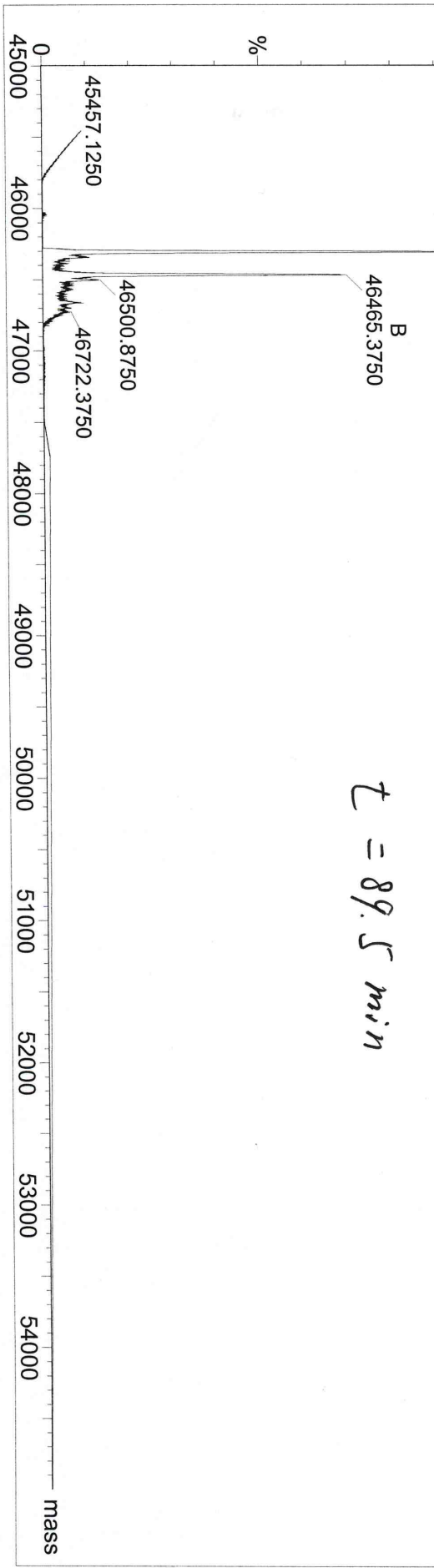
Col. V = 12.00

QTOF2 - UNM Mass Spectrometry

Pusher: 16129.00; Temp C: 28.97

101705_190_LING 16 (0.689) Sb (3.40.00); Tr (600:1990.0.13, Mid); Cm (14:19)

Retention Time (min)	Mass (m/z)	Abundance (%)
46304.2500	3.65e3	100
46465.3750	46307.10±9.10	~10
46463.32±9.63	46463.32±9.63	~10



t = 89.5 min

10 min PA AD2 ~ 89.5 min
Carbamazine

TS

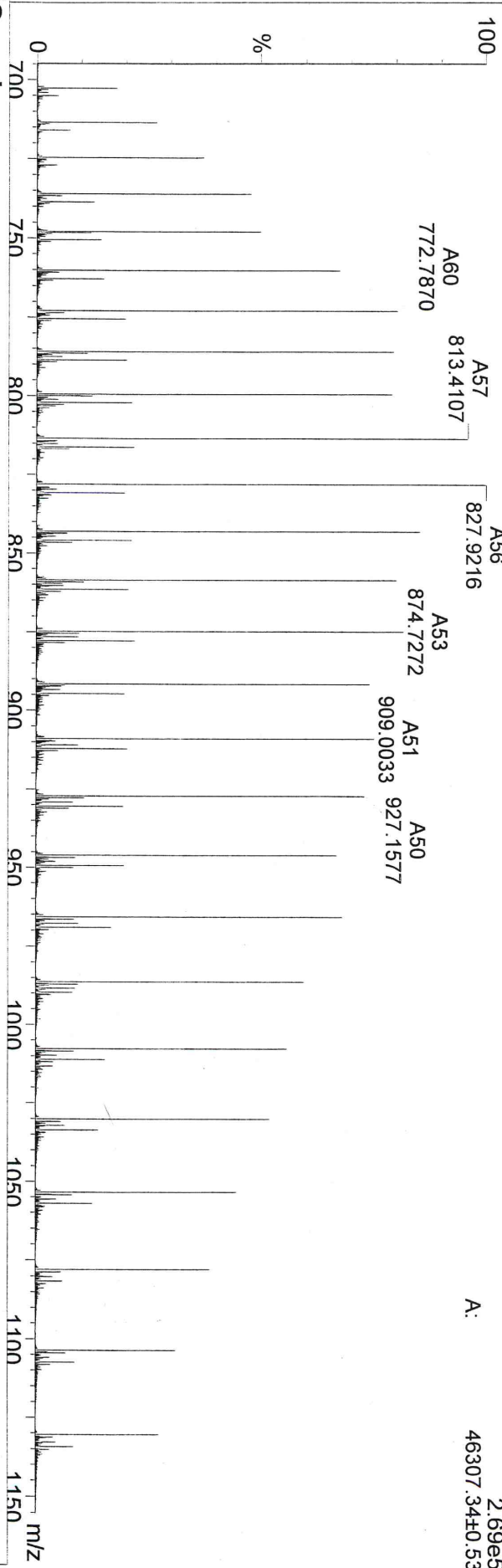
Organic

0108_050905ESI+VE 279 (5.684) AM (Top,4, Ar, 10000.0,556.28,0.70,LS 10); Sm (Mn, 2x2.00); Sb (20,15.00); Cm (264.407)

1: TOF MS ES+

2.69e5

46307.34±0.53



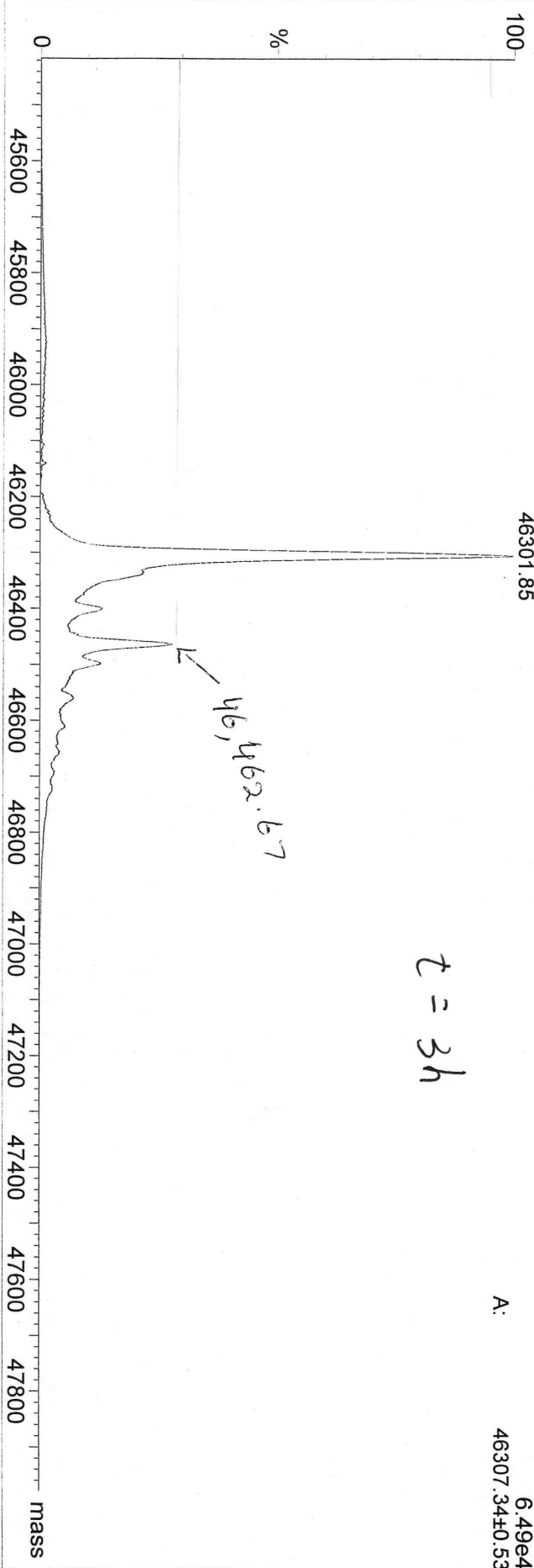
Organic

0108_050905ESI+VE 279 (5.684) Tr (500:2000,0.13,Mid); Sb (20,15.00); Cm (264.407)

1: TOF MS ES+

6.49e4

46307.34±0.53

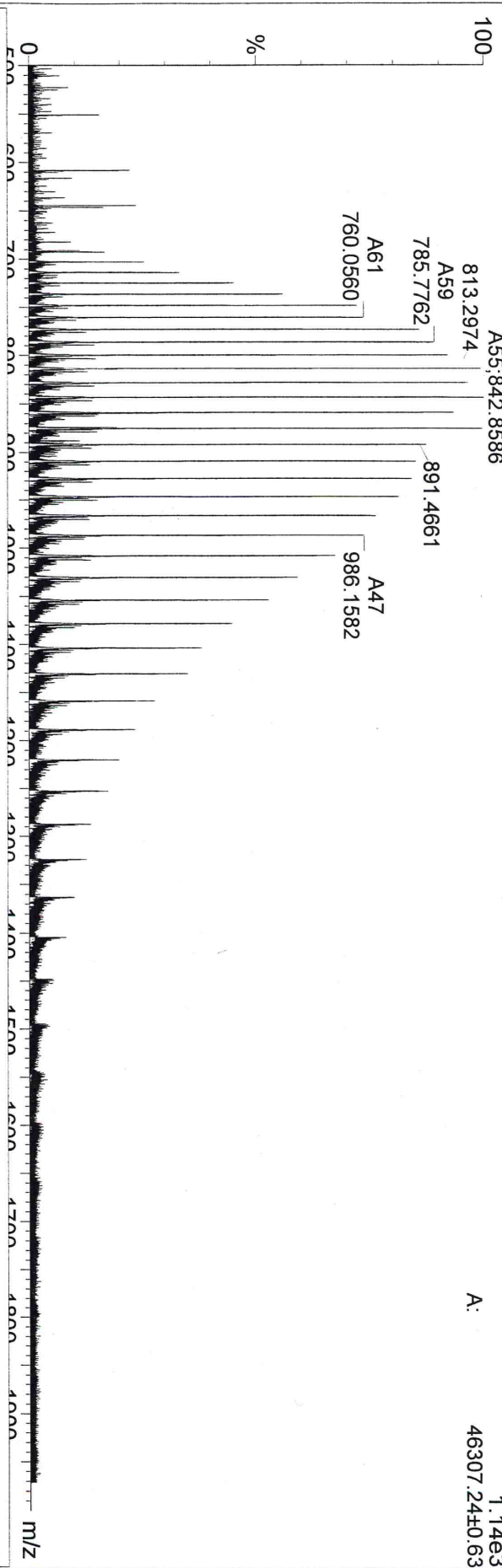


% Intensity

LS

Organic

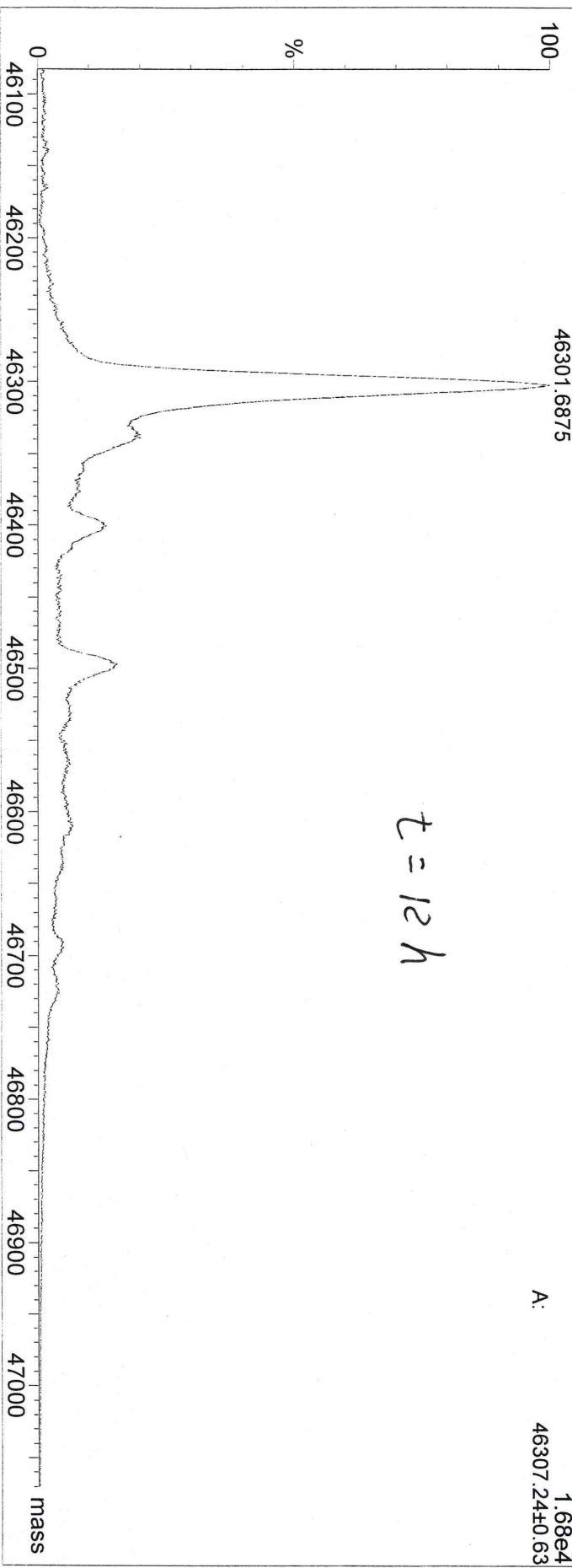
0109_050905ESI+VE 264 (5.391) Sb (20,15.00) ; Cm (253:293)



1: TOF MS ES+
1.14e3
46307.24±0.63

Organic

0109_050905ESI+VE 264 (5.391) Tr (500:2000,0.13,Mid) ; Sb (20,15.00) ; Cm (253:293)



1: TOF MS ES+
1.68e4
46307.24±0.63

S