

District 3 Community Report, 2002

Bernalillo, Valencia

Demographics

In 2002, there were 431,224 licensed drivers in District 3. Of these, there were 219,785 females and 211,439 males. The population of District 3 was 640,079. The total number of crashes in 2002 was 20,449, yielding a crash rate of 32 per thousand people (Total number of crashes 20,449 divided by total population 640,079 times 1,000). The corresponding rate for the state was 27 per thousand people.

General Crash Information

Note: The 1999 crash file contains 15% fewer crashes than the 1998 file. This may be due to problems implementing the new system after the old system failed, or to under reporting. Care should be used in interpreting differences between 1999 and other years in this report.

Alcohol-related Crash Information

Information about alcohol-involved crashes is included in all sections of this report. Of the 2,825 people convicted of DWI in District 3, 63 percent were first-time DWI convictions (Number of first convictions 1,789 divided by the total number of people convicted 2,825 times 100). The corresponding percent for the state is 57.

Crash Specifics

Crashes involving other vehicles were the most common class, accounting for 82 percent of all crashes. Crashes involving other vehicles, overturns, and pedestrians were the most common crash classes which resulted in fatalities. Passenger cars were the vehicle type most often involved in crashes, accounting for 54 percent of all vehicles in crashes. Pickups accounted for 21 percent of vehicles involved in crashes. Together these two vehicle types comprised 76 percent of the vehicles involved in injury crashes. The three most common top contributing factors were driver inattention, following too close, and failing to yield. There were 85 fatal crashes in 2002. The most common top contributing factor for the fatal crashes was alcohol involvement.

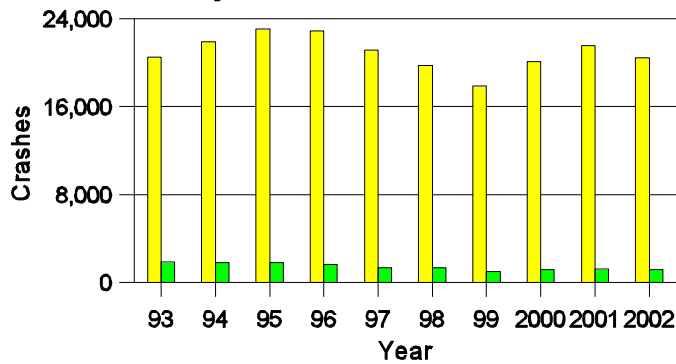
People in Crashes

Overall, males were 55 percent of drivers in crashes, although they account for only 49 percent of licensed drivers in District 3. Fewer pedestrians were involved in crashes than last year. In 2002, 13 'teenagers' and 14 young adults were killed in crashes in District 3. Statewide 18 percent of alcohol-involved drivers were under 21; in District 3, 15 percent were under 21.

#	Location of arrest/conviction was determined by police agency/court location, not driver residence.
#	Crashes and drivers were counted by the county of occurrence/residence.
#	Population was counted according to the Census definition. The most current population data is from 2002
#	Young adults are people between the ages of 20 and 24.
#	'Teenagers' are people between the ages of 15 and 19.
#	Tables only include variable values for which there are data.
#	Urban Areas include: Albuquerque, Belen, Bosque Farms, and Los Lunas.

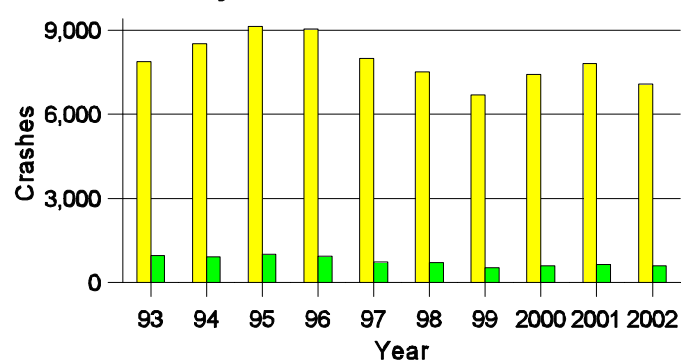
Crashes in District 3

by Alcohol Involvement



Fatal and Injury Crashes in District 3

by Alcohol Involvement



■ All Crashes
■ Alcohol-involved Crashes

■ All Fatal and Injury Crashes
■ Alcohol-involved Fatal and Injury Crashes

The Seven Segments in District 3 with the Most Crashes, 2002

Highway	Mile post	County	Crashes		
			Total	Fatal	Injury
I 25 N	221.6 to 223.7	Bernalillo	25	0	13
I 40 E	158.2 to 159.3	Bernalillo	25	0	11
I 40 W	156.0 to 158.0	Bernalillo	24	0	10
I 25 N	223.7 to 224.5	Bernalillo	18	0	8
I 25 S	221.6 to 223.7	Bernalillo	25	0	8
I 40 E	156.0 to 158.0	Bernalillo	21	0	8
I 40 W	142.0 to 145.2	Bernalillo	10	1	7

The Seven Intersections in District 3 with the Most Crashes, 2002

City	Intersection	Crashes			People	
		Total	Fatal	Injury	Killed	Injured
Albuquerque	Montgomery Blvd NE @ San Mateo Blvd NW	121	0	45	0	65
Albuquerque	Coors Blvd NW @ Paseo Del Norte Blvd NE	120	0	45	0	75
Albuquerque	Montgomery Blvd NE @ Wyoming Blvd NE	119	0	30	0	46
Albuquerque	Coors Blvd NW @ Irving Blvd NW	95	0	46	0	74
Albuquerque	Carlisle Blvd NE @ Montgomery Blvd NE	91	0	26	0	38
Albuquerque	Juan Tabo Blvd NE @ Lomas Blvd NE	89	0	29	0	40
Albuquerque	Jefferson St NE @ Paseo Del Norte Blvd NE	87	0	23	0	32

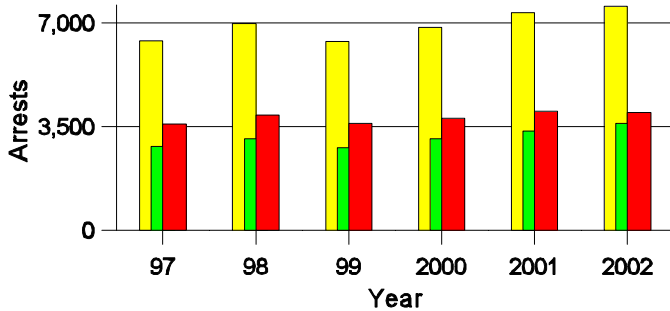
**Lifetime DWI Convictions for Drivers
Convicted of DWI Violations in District 3, 2002**

Convictions	Since 1998	Since 1971
1st	2,246	1,789
2nd	489	636
3rd	73	213
4th	17	100
5th	0	36
6th	0	22
7th	0	14
8th	0	8
9th	0	4
10 or more	0	3
Total	2,825	2,825

Convictions are counts of people convicted of DWI by 7/2003 for violations in 2002 in District 3
Convictions are not comparable to arrests.

DWI Arrests in District 3

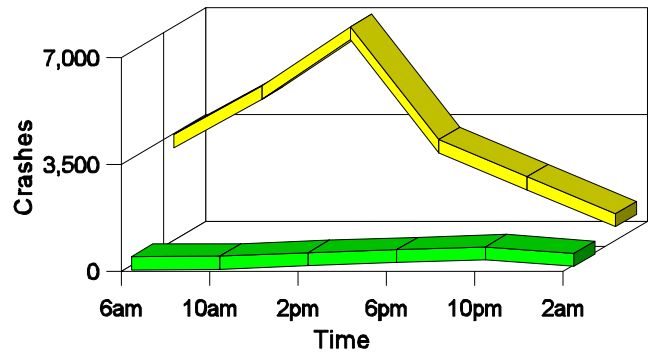
Showing First Arrests and Repeat Offenders



■ Total DWI Arrests
■ First DWI Arrests
■ Repeat DWI Arrests

Crashes in District 3

by Hour and Alcohol Involvement



■ All Crashes
■ Alcohol-involved Crashes

Crashes in District 3 by Class, 2002

Class	Crashes				People		
	Total	% of Total	Fatal	% of Fatal	Injury	Killed	Injured
Other vehicle	16,812	82	32	38	5,921	33	9,096
Pedestrian	200	1	16	19	162	16	178
Fixed object	1,461	7	12	14	351	12	447
Veh. on other roadway	23	0	2	2	5	2	11
Parked vehicle	1,146	6	1	1	125	1	157
Overturn	393	2	18	21	256	21	391
Other non-collision	90	0	1	1	29	1	34
Pedalcyclist	166	1	3	4	133	3	138
Animal	38	0	0	0	8	0	12
Other object	120	1	0	0	9	0	10
Total	20,449	100	85	100	6,999	89	10,474

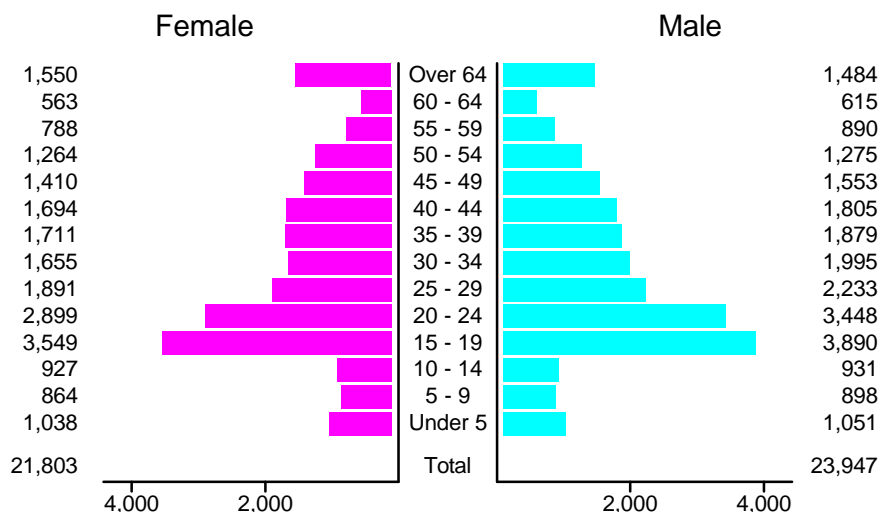
Crashes in District 3 by Vehicle Type, 2002

Vehicle Type	Vehicles					People	
	Total	% of Total	Fatal	% of Fatal	Injury	Killed	Injured
Passenger car	22,293	54	63	43	8,243	33	6,490
Pickup	8,505	21	29	20	2,932	15	1,627
Semi	587	1	6	4	131	1	33
Bus	142	0	0	0	36	0	30
Motorcycle	397	1	10	7	299	10	322
Pedalcyclist	171	0	3	2	137	3	136
Pedestrian	213	1	17	11	173	16	172
Van/4 WD	6,429	16	15	10	2,306	10	1,586
Other	180	0	3	2	43	1	14
Unknown	2,364	6	2	1	456	0	64
Total	41,281	100	148	100	14,756	89	10,474

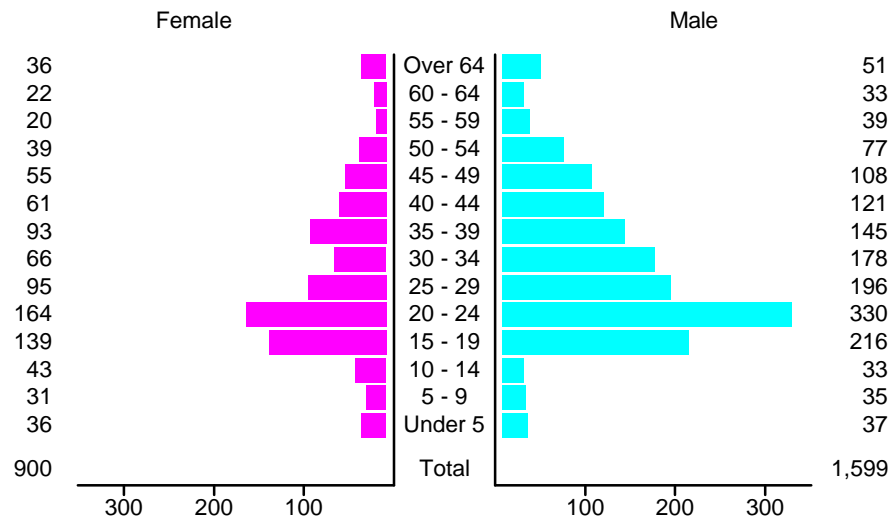
Crashes in District 3 by Top Contributing Factor, 2002

Contributing Factor	Crashes					People	
	Total	% of Total	Fatal	% of Fatal	Injury	Killed	Injured
Alcohol involvement	1,175	6	42	49	548	44	872
Passing a red light	1,576	8	5	6	741	5	1,196
Failing to yield	3,191	16	3	4	1,293	3	2,023
Excessive speed	1,440	7	8	9	518	8	800
Driving left of center	272	1	4	5	52	4	92
Following too close	3,853	19	1	1	1,390	1	2,032
Improper turning	898	4	1	1	222	1	312
Improper overtaking	285	1	0	0	64	0	94
Improper backing	599	3	0	0	50	0	69
Inop. traffic control	16	0	0	0	6	0	11
Mechanical defect	354	2	5	6	109	5	172
Driver inattention	5,081	25	7	8	1,583	8	2,253
Improper driving	149	1	3	4	42	3	63
Other	1,560	8	6	7	381	7	485
Total	20,449	100	85	100	6,999	89	10,474

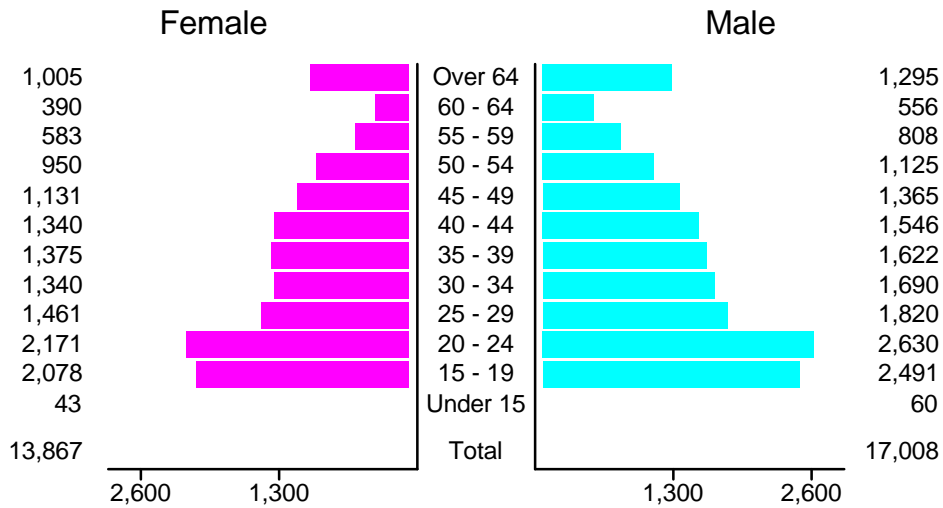
People in Crashes by Age and Sex in District 3, 2002



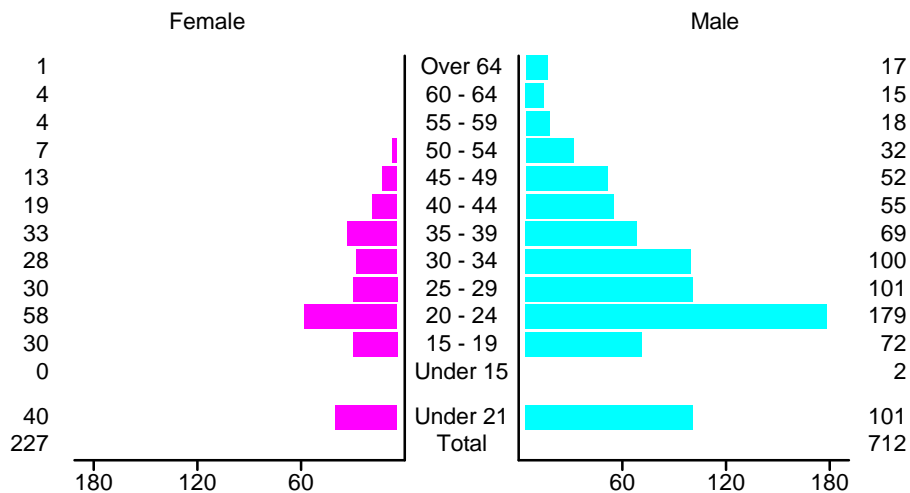
People in Alcohol-Involved Crashes in District 3, 2002 by Age and Sex



Drivers in Crashes by Age and Sex in District 3, 2002

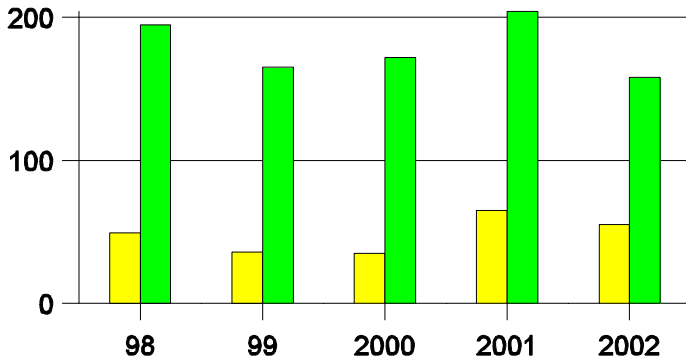


Alcohol-Involved Drivers in Crashes in District 3, 2002 by Age and Sex



Pedestrians in Crashes in District 3

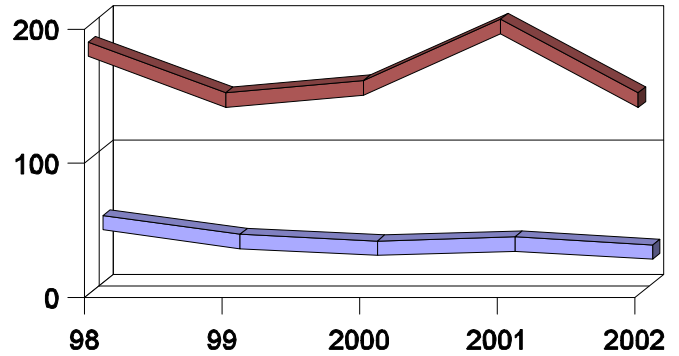
by Pedestrian Alcohol-involvement, 1998-2002



■ Alcohol-involved Pedestrians
■ Pedestrians Not Alcohol-involved

Pedestrians in Crashes in District 3

by Age Group, 1998-2002



■ Pedestrians 12 and Younger
■ Pedestrians 13 and Older

'Teenagers' and Young Adults in Crashes in District 3 by Vehicle Type, 2002

Vehicle	'Teenage' Drivers			Young Adult Drivers		
	Total	Fatal	Injury	Total	Fatal	Injury
Passenger car	3,212	10	1,254	3,223	14	1,295
Pickup	766	5	273	857	5	338
Semi	1	0	0	32	0	11
Bus	2	0	1	2	0	1
Motorcycle	25	2	19	67	1	56
Pedalcyclist	10	0	10	8	0	5
Pedestrian	12	0	10	14	1	12
Van/4 WD	547	0	202	583	2	225
Other	3	0	1	14	0	4
Unknown	24	0	5	31	0	12
Total	4,602	17	1,775	4,831	23	1,959

'Teenagers' and Young Adults in Crashes in District 3, 1993-2002









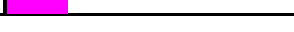
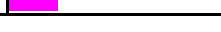
Year	'Teenagers'				Young Adults			
	All Crashes		Alcohol Crashes		All Crashes		Alcohol Crashes	
	Killed	Injured	Killed	Injured	Killed	Injured	Killed	Injured
2002	13	1,475	12	120	14	1,368	6	140
2001	8	1,706	4	162	11	1,544	5	159
2000	8	1,704	2	130	13	1,360	6	128
1999	13	1,539	8	124	9	1,247	5	140
1998	5	1,774	3	165	9	1,369	5	160
1997	11	1,782	7	201	8	1,438	3	174
1996	12	2,054	3	213	10	1,682	6	271
1995	13	2,183	7	248	12	1,796	5	278
1994	6	2,147	4	217	17	1,781	10	229
1993	14	1,782	5	177	17	1,673	11	258

Passenger Vehicle Seatbelt Usage and Injuries in District 3, 2000-2002

Injury Level	2002		2001		2000	
	Total	No Belt	Total	No Belt	Total	No Belt
Killed	54	35	52	35	33	16
Incapacitating injury	778	95	982	105	898	111
Visible injury	1,246	99	1,270	143	1,386	156
Complaint of injury	7,265	121	8,084	167	7,487	155
Unhurt	36,474	394	39,134	433	36,262	510
Total	45,817	744	49,522	883	46,066	948

Numbers in this table are reported belt use. Observed belt use averages 9% lower than reported use. Belt use rates for serious injury (incapacitating and visible injury) are a good proxy for actual use rates as they correlate with observed rates.

Crashes in District 3 by Top Contributing Factor, 2002

Rural			Urban		
Contributing Factor	Total		Contributing Factor	Total	
Driver inattention	130		Driver inattention	4,951	
Excessive speed	93		Following too close	3,803	
Alcohol involvement	91		Failing to yield	3,150	
Not driver error	52		Passing a red light	1,560	
Following too close	109		Excessive speed	1,379	

Crashes with "Not driver error" for top contributing factor are often animal-involved.

Crashes in District 3 by Severity and System, 2000-2002

Year	Rural			Urban		
	Fatal	Injury	PDO	Fatal	Injury	PDO
2002	30	224	372	55	6,775	12,993
2001	26	341	443	68	7,375	13,317
2000	20	406	548	53	6,939	12,108

PDO means Property Damage Only.

Fatal & Injury Crashes in District 3 by System

