

# District 5 Community Report, 2002

Los Alamos, Rio Arriba, San Juan, Santa Fe, Taos, Torrance

## Demographics

In 2002, there were 244,860 licensed drivers in District 5. Of these, there were 123,693 females and 121,167 males. The population of District 5 was 360,695. The total number of crashes in 2002 was 9,471, yielding a crash rate of 26 per thousand people (Total number of crashes 9,471 divided by total population 360,695 times 1,000). The corresponding rate for the state was 27 per thousand people.

## General Crash Information

**Note:** The 1999 crash file contains 15% fewer crashes than the 1998 file. This may be due to problems implementing the new system after the old system failed, or to under reporting. Care should be used in interpreting differences between 1999 and other years in this report.

## Alcohol-related Crash Information

Information about alcohol-involved crashes is included in all sections of this report. Of the 2,419 people convicted of DWI in District 5, 51 percent were first-time DWI convictions (Number of first convictions 1,242 divided by the total number of people convicted 2,419 times 100). The corresponding percent for the state is 57.

## Crash Specifics

Crashes involving other vehicles were the most common class, accounting for 68 percent of all crashes. Crashes involving other vehicles and overturns were the most common crash classes which resulted in fatalities. Passenger cars were the vehicle type most often involved in crashes, accounting for 49 percent of all vehicles in crashes. Pickups accounted for 26 percent of vehicles involved in crashes. Together these two vehicle types comprised 76 percent of the vehicles involved in injury crashes. The three most common top contributing factors were following too close, failing to yield, and driver inattention. There were 94 fatal crashes in 2002. The most common top contributing factor for the fatal crashes was alcohol involvement.

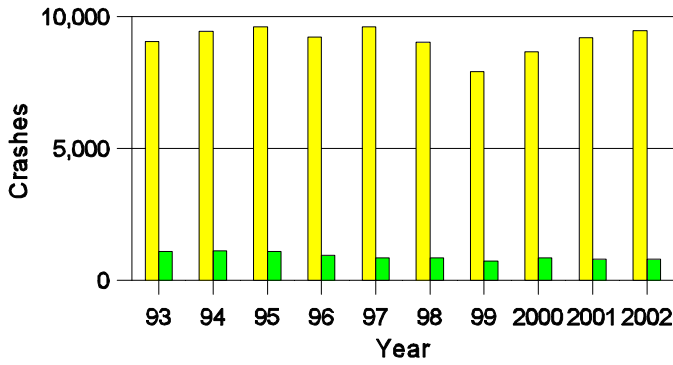
## People in Crashes

Overall, males were 57 percent of drivers in crashes, although they account for only 49 percent of licensed drivers in District 5. More pedestrians were involved in crashes than last year. In 2002, 17 'teenagers' and 11 young adults were killed in crashes in District 5. Statewide 18 percent of alcohol-involved drivers were under 21; in District 5, 20 percent were under 21.

- |   |   |
|---|---|
| # | Location of arrest/conviction was determined by police agency/court location, not driver residence.       |
| # | Crashes and drivers were counted by the county of occurrence/residence.                                   |
| # | Population was counted according to the Census definition. The most current population data is from 2002. |
| # | Young adults are people between the ages of 20 and 24.  |
| # | 'Teenagers' are people between the ages of 15 and 19.   |
| # | Tables only include variable values for which there are data.   |
| # | Urban Areas include: Aztec, Bloomfield, Española, Farmington, Los Alamos, Santa Fe, and Taos.             |

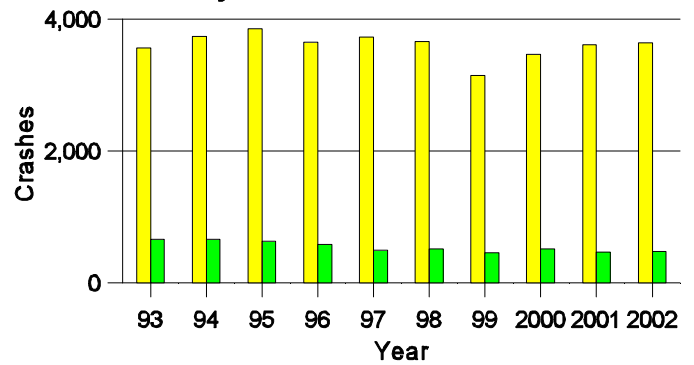
### Crashes in District 5

#### by Alcohol Involvement



### Fatal and Injury Crashes in District 5

#### by Alcohol Involvement



### The Seven Segments in District 5 with the Most Crashes, 2002

Highway	Mile post	County	Crashes		
			Total	Fatal	Injury
US 64	57.2 to 58.6	San Juan	26	0	15
NM 68	40.3 to 42.4	Taos	24	0	12
US 84	194.5 to 197.0	Rio Arriba	24	2	10
US 84	184.4 to 188.5	Santa Fe	15	0	9
NM 502	4.0 to 5.6	Santa Fe	15	0	9
I 25 S	275.8 to 278.9	Santa Fe	14	0	8
I 40 E	183.0 to 187.1	Santa Fe	14	0	8

### The Seven Intersections in District 5 with the Most Crashes, 2002

City	Intersection	Crashes			People	
		Total	Fatal	Injury	Killed	Injured
Española	NM 584 @ Riverside Dr	78	0	33	0	61
Santa Fe	Airport Rd @ Cerrillos Rd	73	0	31	0	45
Santa Fe	Cerrillos Rd @ Richards Ave	59	0	18	0	27
Santa Fe	Cerrillos Rd @ St Francis Dr	58	0	22	0	32
Santa Fe	Cerrillos Rd @ Vegas Verdes Dr	46	0	16	0	24
Santa Fe	Siringo Rd @ St Francis Dr	46	0	25	0	44
Farmington	30th St @ Main St	43	0	12	0	20

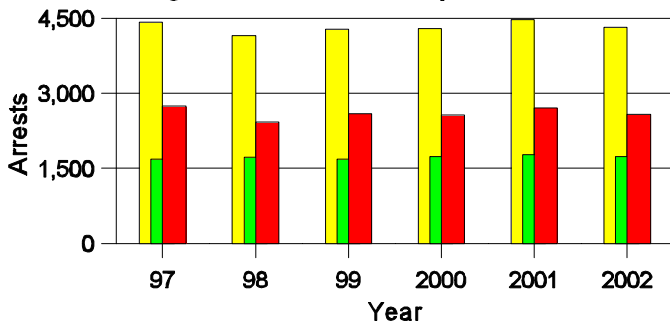
**Lifetime DWI Convictions for Drivers  
Convicted of DWI Violations in District 5, 2002**

Convictions	Since 1998	Since 1971
1st	1,717	1,242
2nd	528	562
3rd	140	315
4th	28	135
5th	5	72
6th	1	41
7th	0	22
8th	0	8
9th	0	9
10 or more	0	13
<b>Total</b>	<b>2,419</b>	<b>2,419</b>

Convictions are counts of people convicted of DWI by 7/2003 for violations in 2002 in District 5  
Convictions are not comparable to arrests.

**DWI Arrests in District 5**

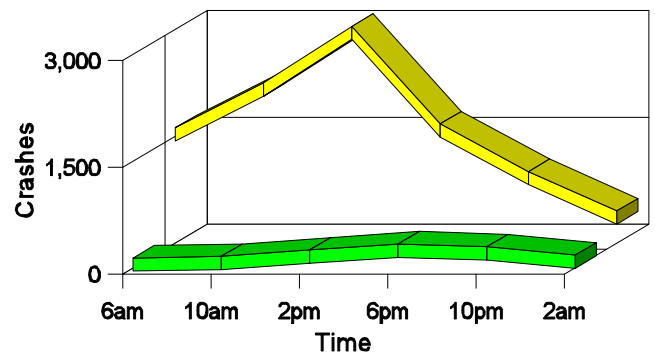
Showing First Arrests and Repeat Offenders



■ Total DWI Arrests  
■ First DWI Arrests  
■ Repeat DWI Arrests

**Crashes in District 5**

by Hour and Alcohol Involvement



■ All Crashes  
■ Alcohol-involved Crashes

**Crashes in District 5 by Class, 2002**

Class	Crashes				People		
	Total	% of Total	Fatal	% of Fatal	Injury	Killed	Injured
Other vehicle	6,486	68	38	40	2,524	39	4,210
Pedestrian	89	1	13	14	65	14	75
Fixed object	1,133	12	14	15	366	15	464
Veh. on other roadway	9	0	0	0	2	0	4
Parked vehicle	417	4	0	0	47	0	63
Overturn	725	8	28	30	407	33	604
Other non-collision	125	1	0	0	31	0	41
Pedalcyclist	48	1	0	0	45	0	48
Railroad train	3	0	0	0	0	0	0
Animal	371	4	1	1	48	1	70
Other object	65	1	0	0	12	0	13
<b>Total</b>	<b>9,471</b>	<b>100</b>	<b>94</b>	<b>100</b>	<b>3,547</b>	<b>102</b>	<b>5,592</b>

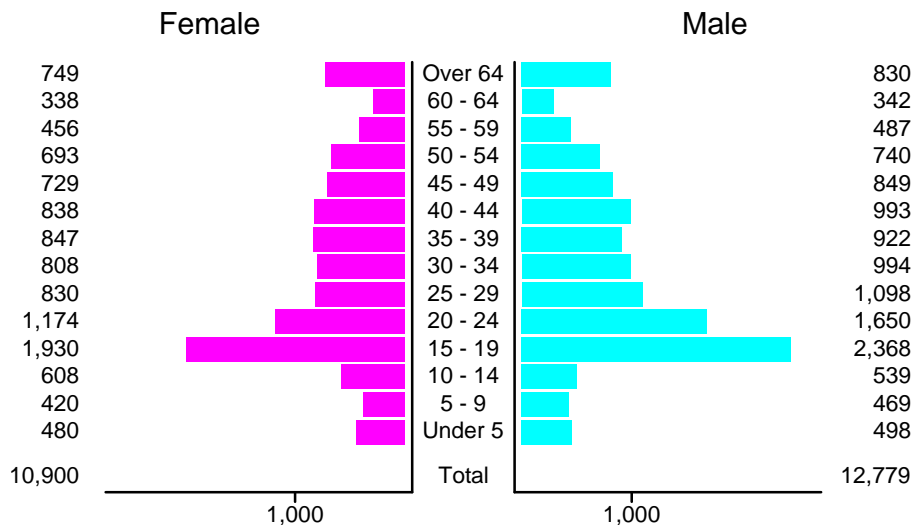
### Crashes in District 5 by Vehicle Type, 2002

Vehicle Type	Vehicles					People	
	Total	% of Total	Fatal	% of Fatal	Injury	Killed	Injured
Passenger car	8,540	49	60	40	3,384	39	3,057
Pickup	4,585	26	35	23	1,694	22	1,187
Semi	315	2	9	6	85	5	37
Bus	47	0	1	1	8	0	14
Motorcycle	213	1	9	6	174	8	188
Pedalcyclist	57	0	0	0	54	0	54
Pedestrian	94	1	14	9	69	14	67
Van/4 WD	2,810	16	20	13	1,088	12	957
Other	110	1	1	1	26	2	11
Unknown	532	3	1	1	121	0	20
<b>Total</b>	<b>17,303</b>	<b>100</b>	<b>150</b>	<b>100</b>	<b>6,703</b>	<b>102</b>	<b>5,592</b>

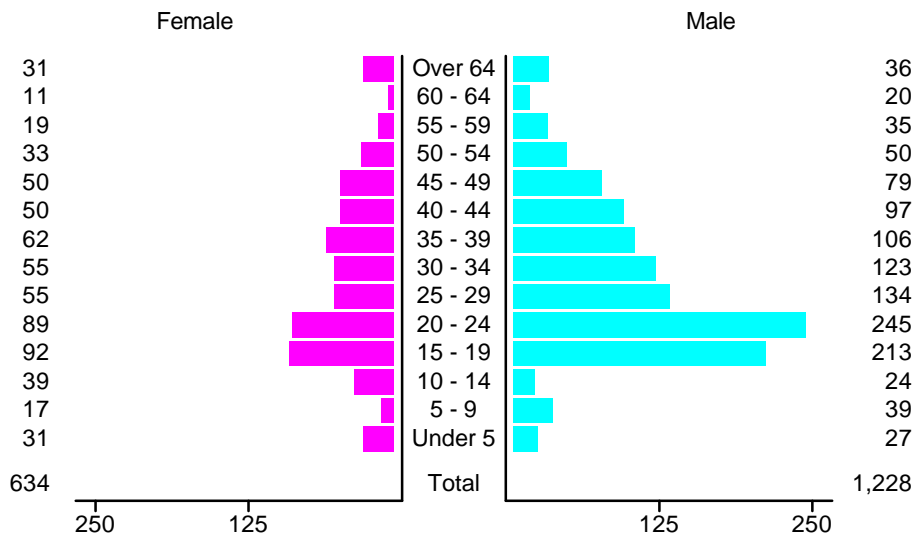
### Crashes in District 5 by Top Contributing Factor, 2002

Contributing Factor	Crashes					People	
	Total	% of Total	Fatal	% of Fatal	Injury	Killed	Injured
Alcohol involvement	809	9	46	49	424	49	735
Passing a red light	510	5	3	3	226	3	388
Failing to yield	1,480	16	12	13	615	12	1,039
Excessive speed	1,122	12	17	18	469	20	763
Driving left of center	224	2	7	7	75	8	129
Following too close	1,897	20	0	0	755	0	1,167
Improper turning	294	3	0	0	94	0	142
Improper overtaking	110	1	1	1	29	1	45
Improper backing	319	3	0	0	20	0	21
Inop. traffic control	9	0	0	0	2	0	2
Mechanical defect	187	2	1	1	62	1	82
Driver inattention	1,357	14	3	3	483	4	677
Improper driving	131	1	1	1	41	1	62
Other	1,022	11	3	3	252	3	340
<b>Total</b>	<b>9,471</b>	<b>100</b>	<b>94</b>	<b>100</b>	<b>3,547</b>	<b>102</b>	<b>5,592</b>

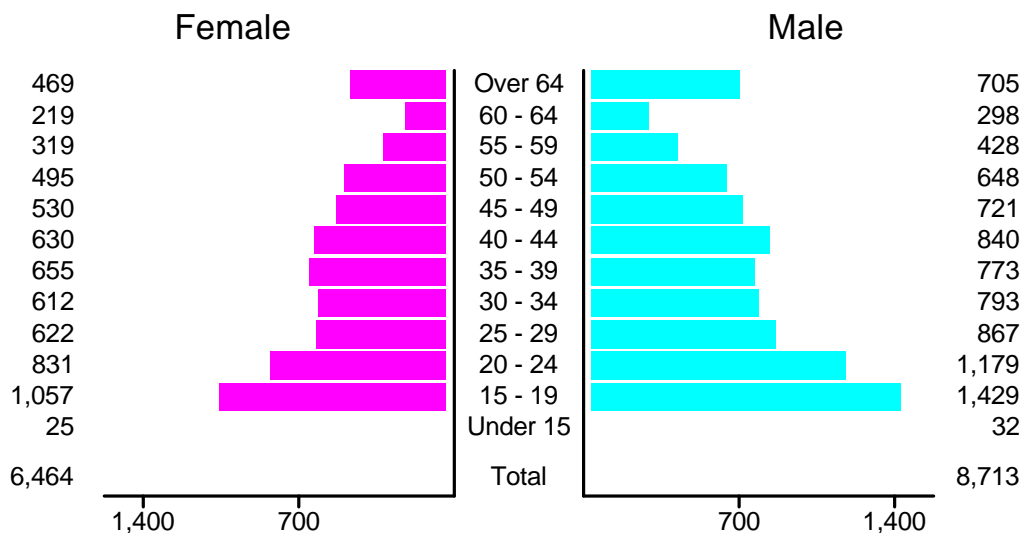
### People in Crashes by Age and Sex in District 5, 2002



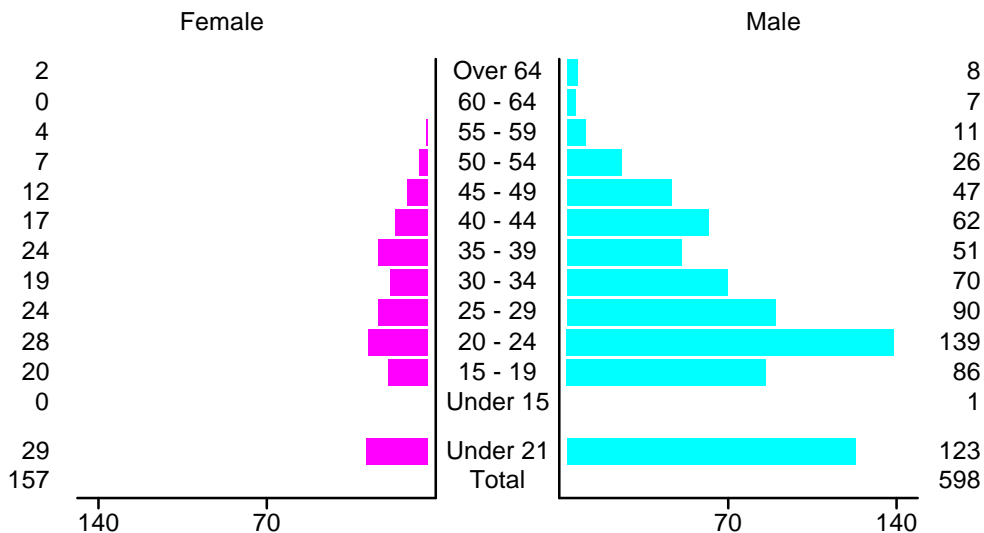
### People in Alcohol-Involved Crashes in District 5, 2002 by Age and Sex



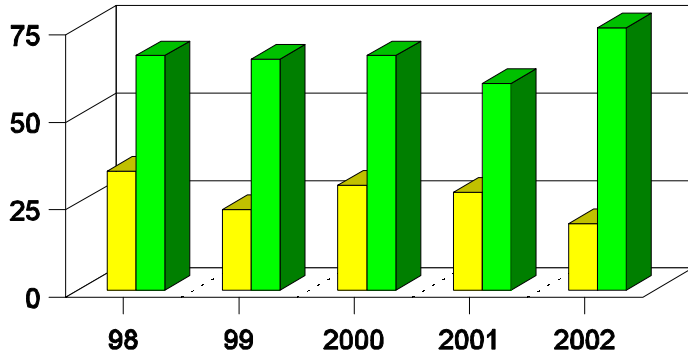
### Drivers in Crashes by Age and Sex in District 5, 2002



### Alcohol-Involved Drivers in Crashes in District 5, 2002 by Age and Sex

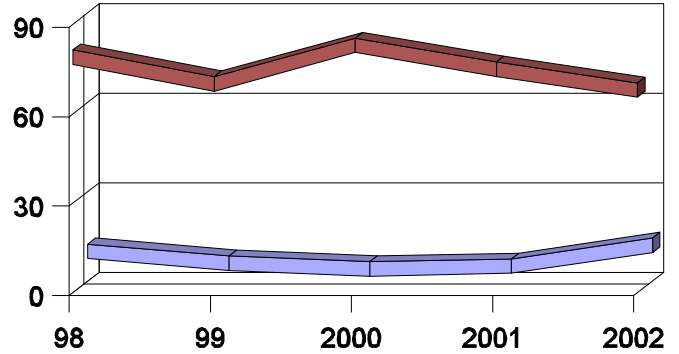


**Pedestrians in Crashes in District 5  
by Pedestrian Alcohol-involvement, 1998-2002**



■ Alcohol-involved Pedestrians  
■ Pedestrians Not Alcohol-involved

**Pedestrians in Crashes in District 5  
by Age Group, 1998-2002**



■ Pedestrians 12 and Younger  
■ Pedestrians 13 and Older

**'Teenagers' and Young Adults in Crashes in District 5 by Vehicle Type, 2002**

Vehicle	'Teenage' Drivers			Young Adult Drivers		
	Total	Fatal	Injury	Total	Fatal	Injury
Passenger car	1,622	11	652	1,210	12	518
Pickup	518	6	200	484	2	187
Semi	2	1	1	15	0	7
Motorcycle	22	0	16	29	3	26
Pedalcyclist	7	0	6	7	0	7
Pedestrian	4	0	3	5	2	3
Van/4 WD	311	1	125	254	3	97
Other	4	0	2	8	0	5
Unknown	12	0	5	10	0	5
<b>Total</b>	<b>2,502</b>	<b>19</b>	<b>1,010</b>	<b>2,022</b>	<b>22</b>	<b>855</b>

**'Teenagers' and Young Adults in Crashes in District 5 , 1993-2002**









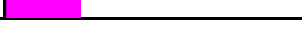
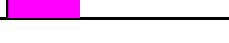
Year	'Teenagers'				Young Adults			
	All Crashes		Alcohol Crashes		All Crashes		Alcohol Crashes	
	Killed	Injured	Killed	Injured	Killed	Injured	Killed	Injured
2002	17	940	4	114	11	695	8	122
2001	9	930	7	109	8	650	6	134
2000	12	918	6	137	15	630	9	132
1999	14	802	5	106	4	540	2	114
1998	9	1,018	6	154	7	651	4	125
1997	6	1,001	6	149	12	640	7	112
1996	20	1,105	11	147	16	661	11	127
1995	12	1,061	5	143	11	664	8	149
1994	9	982	4	134	14	695	11	182
1993	14	936	13	145	10	688	6	145

## Passenger Vehicle Seatbelt Usage and Injuries in District 5, 2000-2002

Injury Level	2002		2001		2000	
	Total	No Belt	Total	No Belt	Total	No Belt
Killed	69	42	70	52	37	20
Incapacitating injury	560	120	536	96	524	96
Visible injury	997	176	951	159	914	175
Complaint of injury	3,459	134	3,462	149	3,235	138
Unhurt	17,739	378	17,411	365	16,485	409
<b>Total</b>	<b>22,824</b>	<b>850</b>	<b>22,430</b>	<b>821</b>	<b>21,195</b>	<b>838</b>

Numbers in this table are reported belt use. Observed belt use averages 9% lower than reported use. Belt use rates for serious injury (incapacitating and visible injury) are a good proxy for actual use rates as they correlate with observed rates.

### Crashes in District 5 by Top Contributing Factor, 2002

Rural			Urban		
Contributing Factor	Total		Contributing Factor	Total	
Excessive speed	641		Following too close	1,682	
Not driver error	409		Failing to yield	1,269	
Driver inattention	383		Driver inattention	974	
Alcohol involvement	373		Excessive speed	481	
Following too close	220		Excessive speed	445	

Crashes with "Not driver error" for top contributing factor are often animal-involved.

### Crashes in District 5 by Severity and System, 2000-2002

Year	Rural			Urban		
	Fatal	Injury	PDO	Fatal	Injury	PDO
2002	78	1,099	1,701	16	2,448	4,129
2001	72	1,175	1,738	17	2,350	3,850
2000	77	1,111	1,660	14	2,262	3,551

PDO means Property Damage Only.

### Fatal & Injury Crashes in District 5 by System

