

Deming Community Report, 2001

Demographics

In 2001, there were 16,536 licensed drivers in Deming. Of these, there were 7,746 females and 8,790 males. The population of Deming was 14,116. The total number of crashes in 2001 was 265, yielding a crash rate of 19 per thousand people (Total number of crashes 265 divided by total population 14,116 times 1,000). The corresponding rate for the state was 27 per thousand people.

General Crash Information

Since 1992 the number of crashes has shown no consistent pattern. Fatal and injury crashes have also shown no consistent pattern since 1992. Belt usage (as a percentage) increased from last year, while belt usage in crashes involving visible and incapacitating injuries also increased. There were no fatalities in the seven intersections with the most crashes in 2001. Of these intersections, three involve Gold Avenue.

Alcohol-related Crash Information

Information about alcohol-involved crashes is included in all sections of this report. Of the 30 people convicted of DWI in Deming, 47 percent were first-time DWI convictions (Number of first convictions 14 divided by the total number of people convicted 30 times 100). The corresponding percent for the state is 57.

Crash Specifics

Crashes involving other vehicles were the most common class, accounting for 71 percent of all crashes. A crash involving an other vehicle resulted in a fatality. Passenger cars were the vehicle type most often involved in crashes, accounting for 47 percent of all vehicles in crashes. Pickups accounted for 30 percent of vehicles involved in crashes. Together these two vehicle types comprised 73 percent of the vehicles involved in injury crashes. The two most common top contributing factors were failing to yield and driver inattention. There was one fatal crash in 2001. The top contributing factor for the fatal crash was failing to yield.

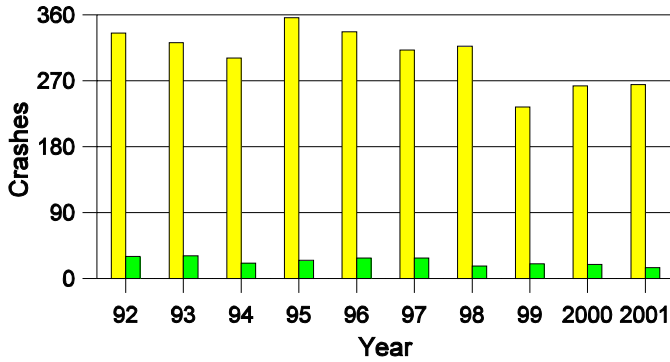
People in Crashes

Overall, males were 57 percent of drivers in crashes, although they account for only 53 percent of licensed drivers in Deming. There were fewer pedestrians in crashes than last year. Statewide 19 percent of alcohol-involved drivers were under 21; in Deming 27 percent were under 21. No 'teenagers' or young adults were killed in crashes in 2001.

Note: The 1999 crash file contains 15% fewer crashes than the 1998 file. This may be due to problems implementing the new system after the old system failed, or to under reporting. Care should be used in interpreting differences between 1999 and other years in this report.

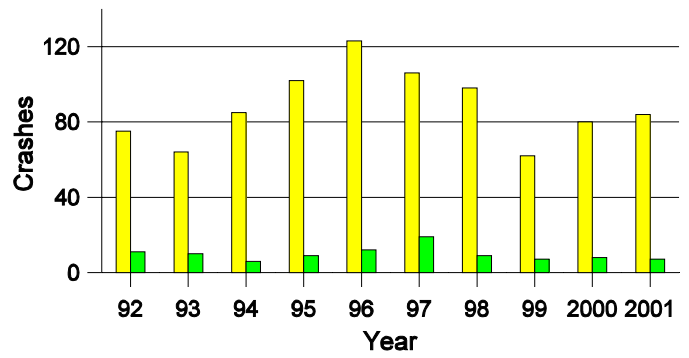
- Location of arrest/conviction was determined by police agency/court location, not driver residence.
- Crashes and drivers were counted by the city of occurrence/residence.
- Population was counted according to the Census definition. The most current city population data is from 2000.
- Young adults are people between the ages of 20 and 24.
- 'Teenagers' are people between the ages of 15 and 19.
- Tables only include variable values for which there are data.

Crashes in Deming by Alcohol Involvement



■ All Crashes
■ Alcohol-involved Crashes

Fatal and Injury Crashes in Deming by Alcohol Involvement



■ All Fatal and Injury Crashes
■ Alcohol-involved Fatal and Injury Crashes

Passenger Vehicle Seatbelt Usage and Injuries in Deming, 1999-2001

Injury Level	2001		2000		1999	
	Total	No Belt	Total	No Belt	Total	No Belt
Killed	0	0	0	0	2	2
Incapacitating injury	13	2	21	10	14	3
Visible injury	28	1	25	8	13	3
Complaint of injury	66	1	58	2	54	4
Unhurt	547	9	551	13	492	24
Total	654	13	655	33	575	36

The Seven Intersections in Deming with the Most Crashes, 2001

Intersection	Crashes			People	
	Total	Fatal	Injury	Killed	Injured
Cedar St @ Gold Ave (n) US 180	11	0	6	0	7
Cedar St @ Pearl St	5	0	2	0	3
Columbus Rd NM 11 @ Florida St	4	0	2	0	3
Gold Ave (n) US 180 @ Railroad Blvd	5	0	3	0	3
Gold Ave (s) NM 11 @ Pine St US 70	6	0	2	0	3
Pearl St @ Pine St US 70/180	4	0	1	0	1
Pine St US 70/180 @ Platinum St	4	0	1	0	1

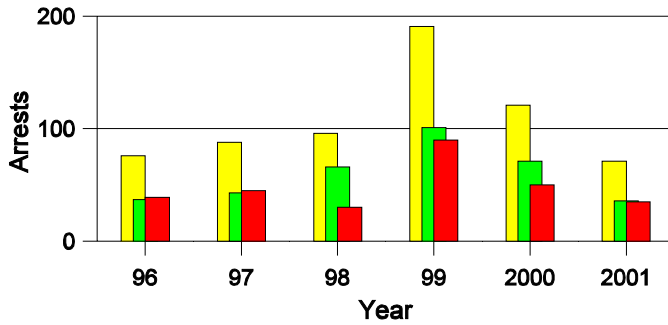
**Lifetime DWI Convictions for Drivers
Convicted of DWI Violations in Deming, 2001**

Convictions	Since 1997	Since 1971
1st	19	14
2nd	7	8
3rd	4	4
4th	0	1
5th	0	3
6th	0	0
7th	0	0
8th	0	0
9th	0	0
10 or more	0	0
Total	30	30

Convictions are counts of people convicted of DWI by 7/2002 for violations in 2001 in Deming.
Convictions are not comparable to arrests.

DWI Arrests in Deming

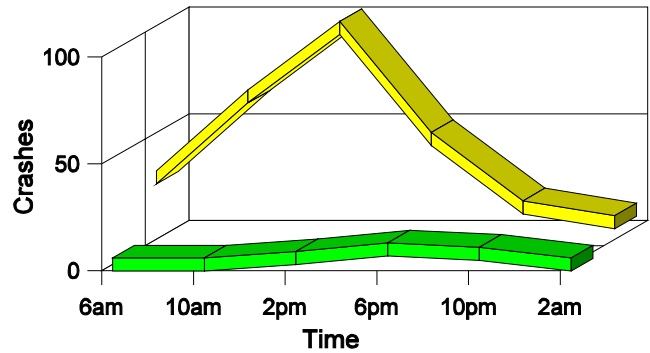
Showing First Arrests and Repeat Offenders



■ Total DWI Arrests
■ First DWI Arrests
■ Repeat DWI Arrests

Crashes in Deming

by Hour and Alcohol Involvement



■ All Crashes
■ Alcohol-involved Crashes

Crashes in Deming by Class, 2001

Class	Crashes				People		
	Total	% of Total	Fatal	% of Fatal	Injury	Killed	Injured
Other vehicle	188	71	1	100	65	1	108
Pedestrian	4	2	0	0	4	0	4
Fixed object	33	12	0	0	3	0	3
Parked vehicle	21	8	0	0	3	0	3
Overturn	5	2	0	0	1	0	1
Other non-collision	7	3	0	0	2	0	2
Pedalcyclist	4	2	0	0	4	0	4
Animal	2	1	0	0	1	0	1
Other object	1	0	0	0	0	0	0
Total	265	100	1	100	83	1	126

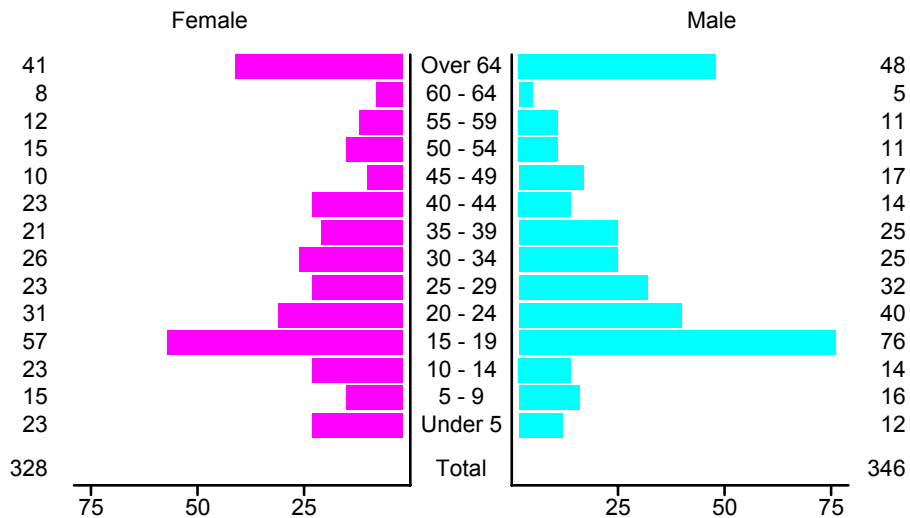
Crashes in Deming by Vehicle Type, 2001

Vehicle Type	Vehicles				People		
	Total	% of Total	Fatal	% of Fatal	Injury	Killed	Injured
Passenger car	228	47	0	0	76	0	61
Pickup	146	30	1	50	43	0	32
Semi	9	2	0	0	2	0	0
Motorcycle	8	2	1	50	7	1	6
Pedalcyclist	4	1	0	0	4	0	3
Pedestrian	4	1	0	0	4	0	4
Van/4 WD	69	14	0	0	23	0	20
Other	3	1	0	0	1	0	0
Unknown	19	4	0	0	3	0	0
Total	490	100	2	100	163	1	126

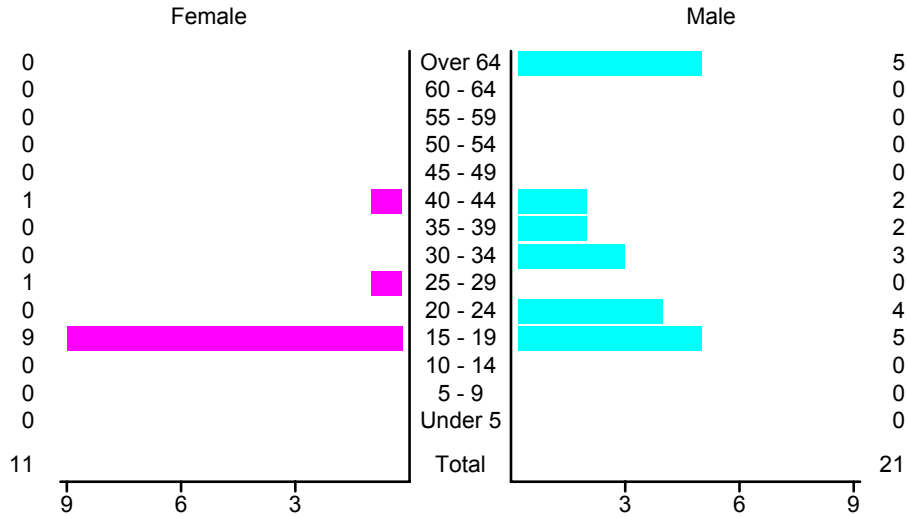
Crashes in Deming by Top Contributing Factor, 2001

Contributing Factor	Crashes				People		
	Total	% of Total	Fatal	% of Fatal	Injury	Killed	Injured
Alcohol involvement	15	6	0	0	7	0	8
Passing a red light	22	8	0	0	9	0	10
Failing to yield	62	23	1	100	27	1	44
Excessive speed	13	5	0	0	2	0	4
Driving left of center	7	3	0	0	2	0	5
Following too close	22	8	0	0	5	0	7
Improper turning	14	5	0	0	2	0	4
Improper overtaking	6	2	0	0	1	0	1
Improper backing	22	8	0	0	1	0	1
Mechanical defect	9	3	0	0	1	0	2
Driver inattention	47	18	0	0	16	0	29
Improper driving	5	2	0	0	3	0	4
Other	21	8	0	0	7	0	7
Total	265	100	1	100	83	1	126

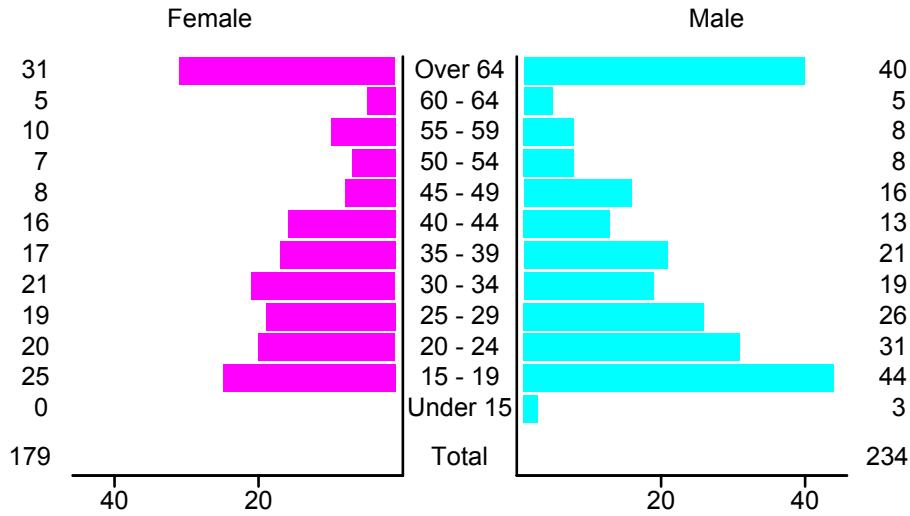
People in Crashes by Age and Sex in Deming, 2001



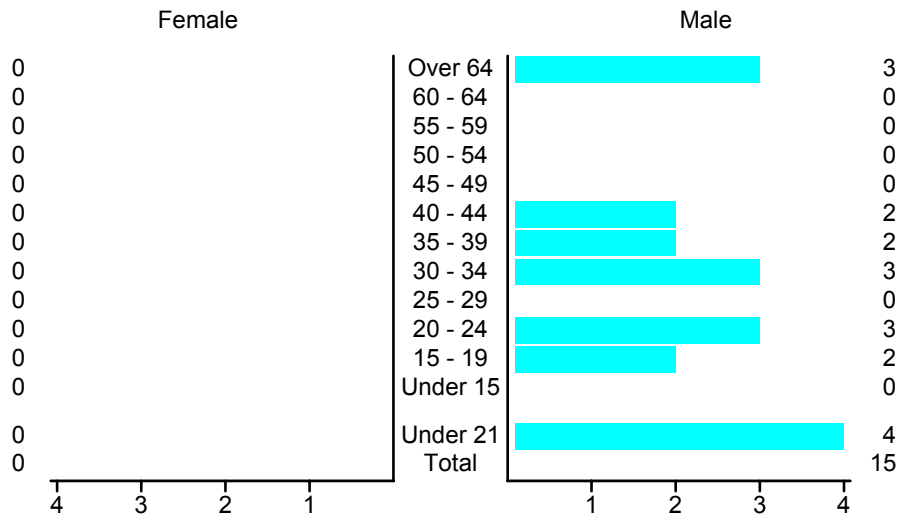
People in Alcohol-Involved Crashes in Deming, 2001 by Age and Sex



Drivers in Crashes by Age and Sex in Deming, 2001

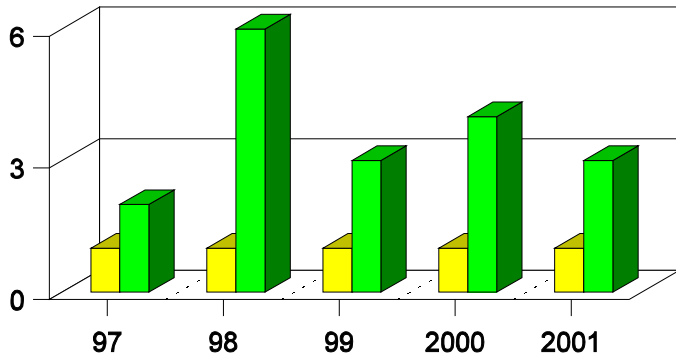


Alcohol-Involved Drivers in Crashes in Deming, 2001 by Age and Sex



Pedestrian in Crashes in Deming

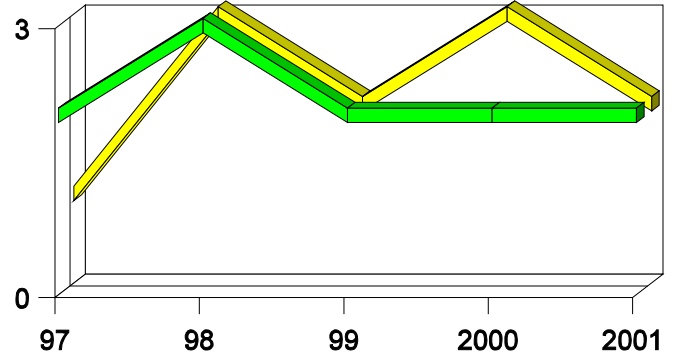
by Pedestrian Alcohol-involvement, 1997-2001



■ Alcohol-involved Pedestrians
■ Pedestrians Not Alcohol-involved

Pedestrian in Crashes in Deming

by Age Group, 1997-2001



■ Pedestrians 12 and Younger
■ Pedestrians 13 and Older

'Teenagers' and Young Adults in Crashes in Deming by Vehicle Type, 2001

Vehicle	'Teenage' Drivers			Young Adult Drivers		
	Total	Fatal	Injury	Total	Fatal	Injury
Passenger car	38	0	13	28	0	9
Pickup	26	1	8	14	0	3
Semi	0	0	0	1	0	0
Motorcycle	0	0	0	1	0	1
Pedestrian	1	0	1	0	0	0
Van/4 WD	5	0	4	6	0	3
Unknown	0	0	0	1	0	0
Total	70	1	26	51	0	16

'Teenagers' and Young Adults Killed and Injured in Crashes by Year in Deming, 1992-2001

Year	'Teenagers'				Young Adults			
	All Crashes		Alcohol Crashes		All Crashes		Alcohol Crashes	
	Killed	Injured	Killed	Injured	Killed	Injured	Killed	Injured
2001	0	22	0	2	0	16	0	2
2000	0	16	0	2	0	14	0	5
1999	1	16	1	1	0	9	0	0
1998	0	29	0	3	0	14	0	2
1997	0	30	0	5	0	20	0	7
1996	0	38	0	2	0	17	0	0
1995	0	26	0	6	0	18	0	0
1994	0	25	0	0	0	13	0	2
1993	0	19	0	4	0	8	0	2
1992	0	31	0	3	0	3	0	1