

Clovis Community Report, 2004

Demographics

In 2004, there were 27,340 licensed drivers in Clovis. Of these, there were 14,071 females and 13,269 males. The population of Clovis was 33,063. The total number of crashes in 2004 was 1,026, yielding a crash rate of 31 per thousand people (total number of crashes 1,026 divided by total population 33,063 times 1,000). The corresponding rate for the state was 27 per thousand people.

General Crash Information

Since 2000 the number of crashes has shown an increasing trend. Fatal and injury crashes in 2004 are the highest of the past ten years. Belt usage (as a percentage) has increased from last year, while belt usage in crashes involving visible and incapacitating injuries has also increased. There were no fatalities in the seven intersections with the most crashes in 2004. Of these intersections, four involve Prince Street.

Alcohol-related Crash Information

Information about alcohol-involved crashes is included in all sections of this report. Of the 75 people convicted of DWI in Clovis, 72 percent were first-time DWI convictions (number of first convictions 54 divided by the total number of people convicted 75 times 100). The corresponding percent for the state is 62.

Crash Specifics

Crashes involving other vehicles were the most common class, accounting for 78 percent of all crashes. Passenger cars were the vehicle type most often involved in crashes, accounting for 52 percent of all vehicles in crashes. Pickups accounted for 26 percent of vehicles involved in crashes. Together these two vehicle types comprised 77 percent of the vehicles involved in injury crashes. The three most common top contributing factors were failing to yield, driver inattention, and following too close. There were no fatal crashes in 2004.

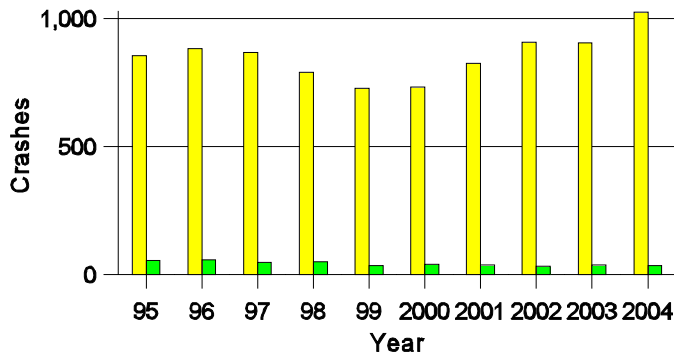
People in Crashes

Overall, males were 51 percent of drivers in crashes, although they account for only 49 percent of licensed drivers in Clovis. The number of pedestrians in crashes decreased from last year. In 2004, no 'teenagers' or young adults were killed in crashes in Clovis. Statewide 18 percent of alcohol-involved drivers were under 21; in Clovis 12 percent were under 21.

Note: The 1999 crash file contains 15% fewer crashes than the 1998 file. This may be due to problems implementing the new system after the old system failed, or to under reporting. Care should be used in interpreting differences between 1999 and other years in this report.

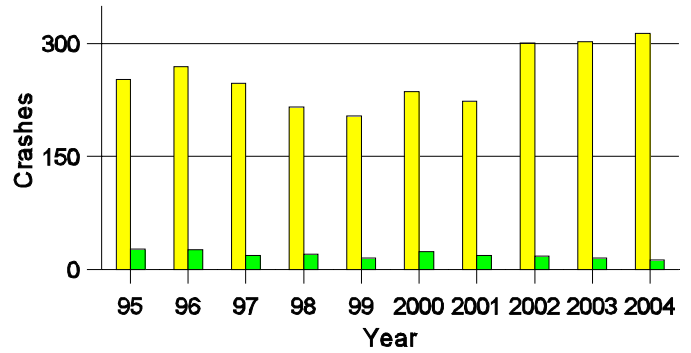
- Location of arrest/conviction was determined by police agency/court location, not driver residence.
- Crashes and drivers were counted by the city of occurrence/residence.
- Population was counted according to the Census definition.
The city population data is from the most current 2004 estimates.
- Young adults are people between the ages of 20 and 24.
- 'Teenagers' are people between the ages of 15 and 19.
- Tables only include variable values for which there are data.

Crashes in Clovis by Alcohol Involvement



■ All Crashes
■ Alcohol-involved Crashes

Fatal and Injury Crashes in Clovis by Alcohol Involvement



■ All Fatal and Injury Crashes
■ Alcohol-involved Fatal and Injury Crashes

Passenger Vehicle Seatbelt Usage and Injuries in Clovis, 2002-2004

Injury Level	2004		2003		2002	
	Total	No Belt	Total	No Belt	Total	No Belt
Killed	0	0	0	0	0	0
Incapacitating injury	28	4	25	4	48	6
Visible injury	66	11	70	12	58	9
Complaint of injury	348	11	283	9	277	8
Unhurt	2,224	20	1,979	31	1,953	28
Total	2,666	46	2,357	56	2,336	51

The Seven Intersections in Clovis with the Most Crashes, 2004

Intersection	Crashes			People	
	Total	Fatal	Injury	Killed	Injured
1st St @ Prince St	15	0	4	0	7
21st St @ Main St	16	0	5	0	6
21st St @ Prince St	50	0	20	0	31
21st St @ Thornton St	21	0	5	0	5
Commerce Way @ Prince St	26	0	6	0	10
Llano Estacado Blvd @ Prince St	15	0	8	0	13
Mabry Dr @ Norris St	15	0	7	0	12

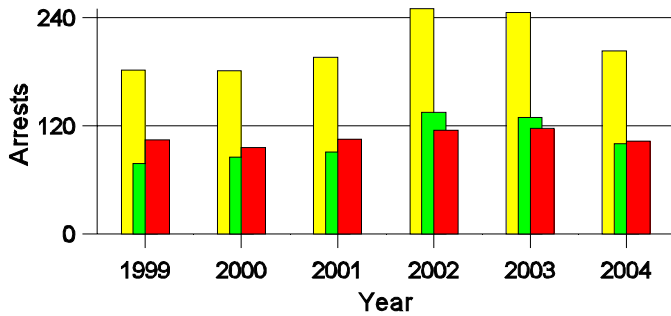
**Lifetime DWI Convictions for Drivers
Convicted of DWI Violations in Clovis, 2004**

Convictions	Since 1999	Since 1980
1st	66	54
2nd	8	12
3rd	1	5
4th	0	3
5th	0	0
6th	0	1
7th	0	0
8th	0	0
9th	0	0
10 or more	0	0
Total	75	75

Convictions are counts of people convicted of DWI by 7/2005 for violations in 2004 in Clovis.
Convictions are not comparable to arrests.

DWI Arrests in Clovis

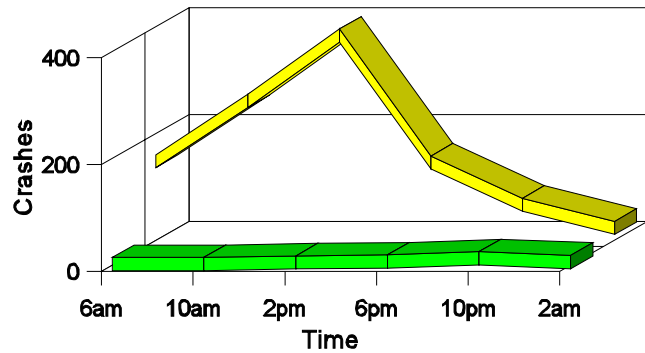
Showing First Arrests and Repeat Offenders



■ Total DWI Arrests
■ First DWI Arrests
■ Repeat DWI Arrests

Crashes in Clovis

by Hour and Alcohol Involvement



■ All Crashes
■ Alcohol-involved Crashes

Crashes in Clovis by Class, 2004

Class	Crashes				People		
	Total	% of Total	Fatal	% of Fatal	Injury	Killed	Injured
Other vehicle	804	78	0	0	274	0	460
Pedestrian	4	0	0	0	3	0	3
Fixed object	69	7	0	0	13	0	15
Parked vehicle	127	12	0	0	8	0	13
Overturn	5	0	0	0	4	0	5
Other non-collision	3	0	0	0	2	0	2
Pedalcyclist	8	1	0	0	8	0	9
Railroad train	1	0	0	0	0	0	0
Animal	3	0	0	0	1	0	2
Other object	2	0	0	0	0	0	0
Total	1,026	100	0	0	313	0	509

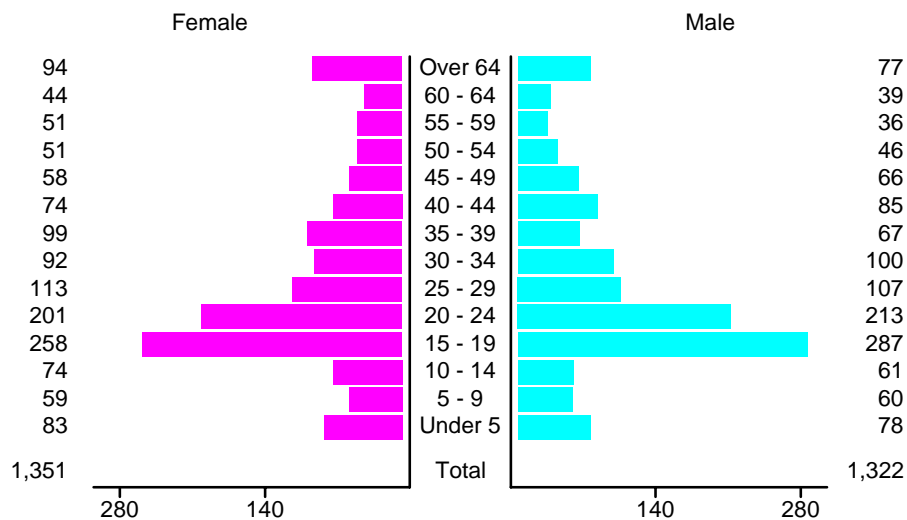
Crashes in Clovis by Vehicle Type, 2004

Vehicle Type	Vehicles					People	
	Total	% of Total	Fatal	% of Fatal	Injury	Killed	Injured
Passenger car	1,061	52	0	0	354	0	295
Pickup	521	26	0	0	151	0	92
Semi	20	1	0	0	6	0	0
Motorcycle	15	1	0	0	15	0	16
Pedalcyclist	9	0	0	0	8	0	7
Pedestrian	4	0	0	0	3	0	3
Van/4 WD	316	15	0	0	103	0	95
Other	5	0	0	0	2	0	0
Unknown	91	4	0	0	10	0	1
Total	2,042	100	0	0	652	0	509

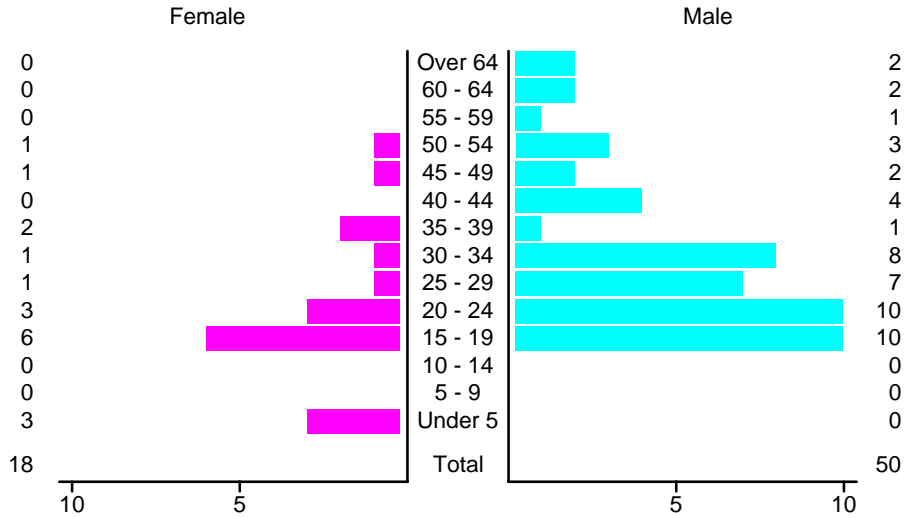
Crashes in Clovis by Top Contributing Factor, 2004

Contributing Factor	Crashes					People	
	Total	% of Total	Fatal	% of Fatal	Injury	Killed	Injured
Alcohol involvement	35	3	0	0	13	0	23
Red light running	100	10	0	0	41	0	68
Failing to yield	251	24	0	0	93	0	155
Excessive speed	73	7	0	0	25	0	44
Driving left of center	14	1	0	0	4	0	9
Following too close	183	18	0	0	56	0	95
Improper turning	23	2	0	0	6	0	9
Improper overtaking	3	0	0	0	0	0	0
Improper backing	97	9	0	0	6	0	7
Mechanical defect	12	1	0	0	3	0	3
Driver inattention	200	19	0	0	57	0	86
Other	35	3	0	0	9	0	10
Total	1,026	100	0	0	313	0	509

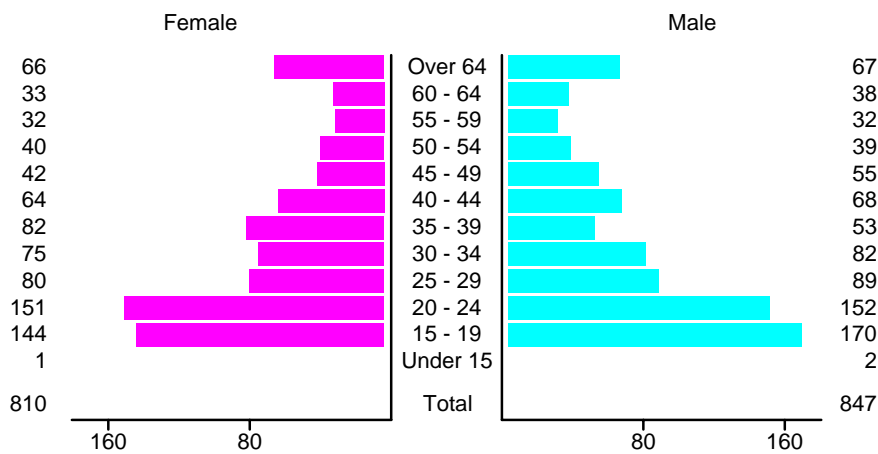
People in Crashes by Age and Sex in Clovis, 2004



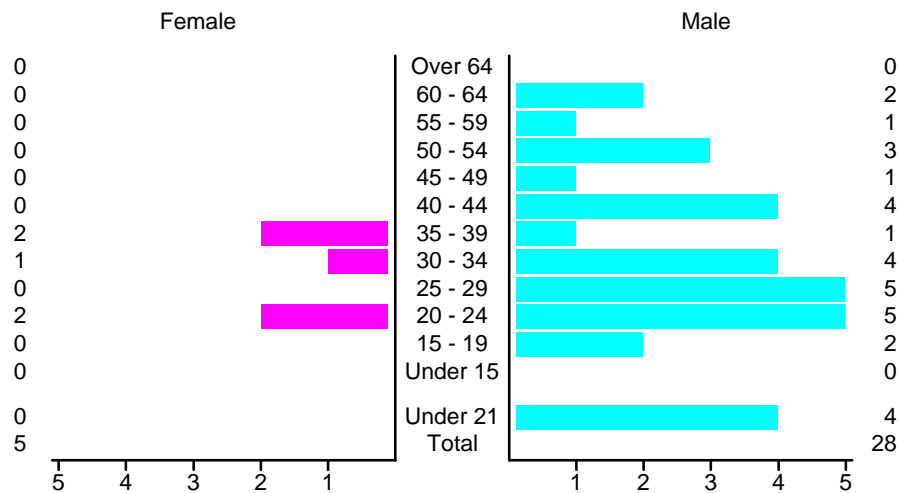
People in Alcohol-Involved Crashes in Clovis, 2004 by Age and Sex



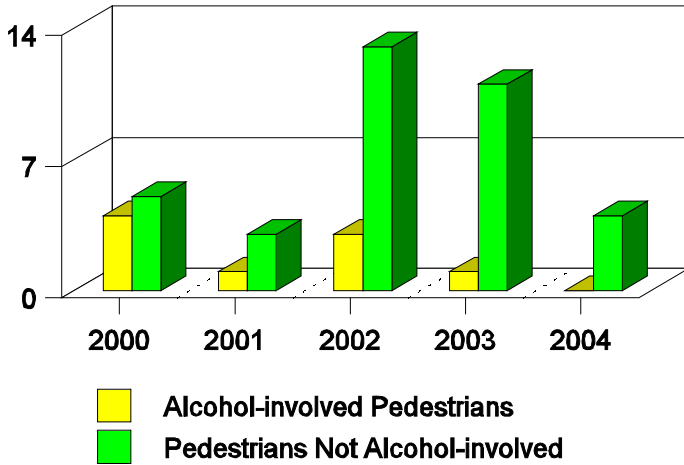
Drivers in Crashes by Age and Sex in Clovis, 2004



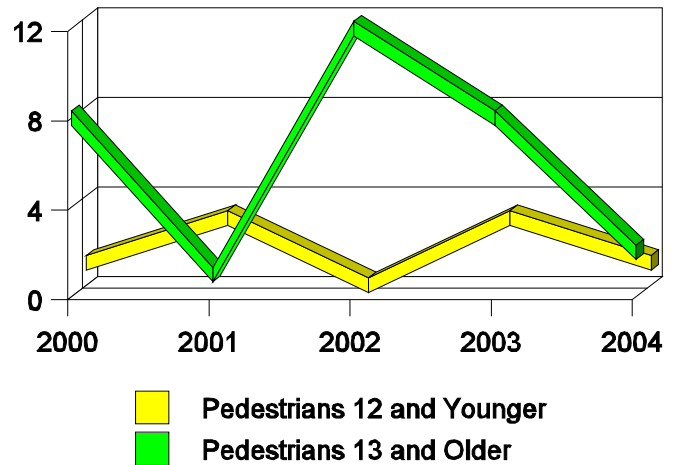
Alcohol-Involved Drivers in Crashes in Clovis, 2004 by Age and Sex



Pedestrian in Crashes in Clovis
by Pedestrian Alcohol-involvement, 2000-2004



Pedestrian in Crashes in Clovis
by Age Group, 2000-2004



'Teenagers' and Young Adults in Crashes in Clovis by Vehicle Type, 2004

Vehicle	'Teenage' Drivers			Young Adult Drivers		
	Total	Fatal	Injury	Total	Fatal	Injury
Passenger car	231	0	86	192	0	74
Pickup	59	0	10	68	0	20
Semi	0	0	0	1	0	1
Motorcycle	0	0	0	1	0	1
Pedalcyclist	1	0	1	0	0	0
Pedestrian	0	0	0	1	0	1
Van/4 WD	24	0	6	37	0	12
Other	0	0	0	1	0	0
Unknown	1	0	0	4	0	0
Total	316	0	103	305	0	109

'Teenagers' and Young Adults Killed and Injured in Crashes by Year in Clovis, 1995-2004

Year	'Teenagers'				Young Adults			
	All Crashes		Alcohol Crashes		All Crashes		Alcohol Crashes	
	Killed	Injured	Killed	Injured	Killed	Injured	Killed	Injured
2004	0	98	0	8	0	63	0	3
2003	0	89	0	3	0	57	0	2
2002	1	78	1	0	0	57	0	6
2001	0	78	0	9	0	42	0	4
2000	0	78	0	7	0	48	0	3
1999	0	65	0	4	0	36	0	6
1998	0	70	0	9	0	46	0	8
1997	0	82	0	4	0	54	0	8
1996	0	76	0	6	0	61	0	7
1995	0	86	0	7	0	46	0	6