

# Grant County Report, 2004

## Demographics

In 2004, there were 22,225 licensed drivers in Grant County. Of these, there were 11,189 females and 11,036 males. The population in Grant County was 29,443. The total number of crashes in 2004 was 654, yielding a crash rate of 22 per thousand people (the total number of crashes 654 divided by the population 29,443 multiplied by 1,000). The corresponding rate for the state was 27 per thousand people.

## General Crash Information

Since 1995 the number of crashes has shown no consistent pattern. Fatal and injury crashes have also shown no consistent pattern since 1995. Belt usage (as a percentage) has increased from last year, while belt usage in crashes involving visible and incapacitating injuries has also increased.

## Alcohol-related Crash Information

Information about alcohol-involved crashes is included in all sections of this report. Of the 140 people convicted of DWI in Grant County in 2004, 56 percent were first-time DWI convictions (number of first convictions 79 divided by the total number of people convicted 140 multiplied by 100). The corresponding percentage for the state was 62.

## Crash Specifics

Crashes involving other vehicles were the most common class, accounting for 50 percent of all crashes. Crashes involving overturns, a fixed object, and an other vehicle resulted in fatalities. Passenger cars were the vehicle type most often involved in crashes, accounting for 46 percent of all vehicles in crashes. Pickups accounted for 29 percent of vehicles involved in crashes. Together these two vehicle types comprised 72 percent of the vehicles involved in injury crashes. The two most common top contributing factors were driver inattention and following too close. There were seven fatal crashes in 2004. The most common top contributing factor for the fatal crashes was alcohol involvement.

## People in Crashes

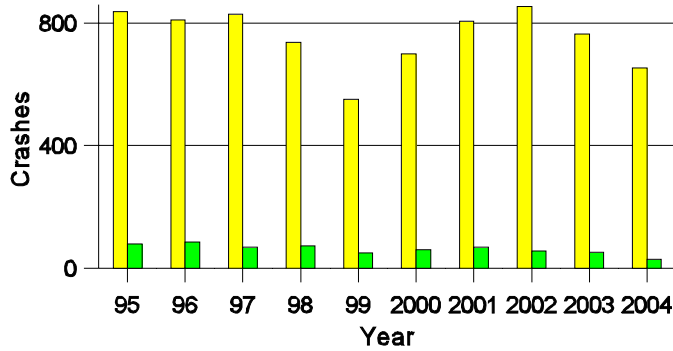
Overall, males were 57 percent of drivers in crashes, although they account for only 50 percent of licensed drivers in Grant County. There were five pedestrians involved in crashes. In 2004, one 'teenager' and no young adults were killed in crashes in Grant County. Statewide 18 percent of alcohol-involved drivers were under 21; in Grant County 12 percent were under 21.

**Note:** The 1999 crash file contains 15% fewer crashes than the 1998 file. This may be due to problems implementing the new system after the old system failed, or to under reporting. Care should be used in interpreting differences between 1999 and other years in this report.

- Location of arrest/conviction was determined by police agency/court location, not driver residence.
- Crashes and drivers were counted by the city of occurrence/residence.
- Population was counted according to the Census definition, using 2004 estimates.
- Young adults are people between the ages of 20 and 24.
- 'Teenagers' are people between the ages of 15 and 19.
- Tables only include variable values for which there are data.

### Crashes in Grant County

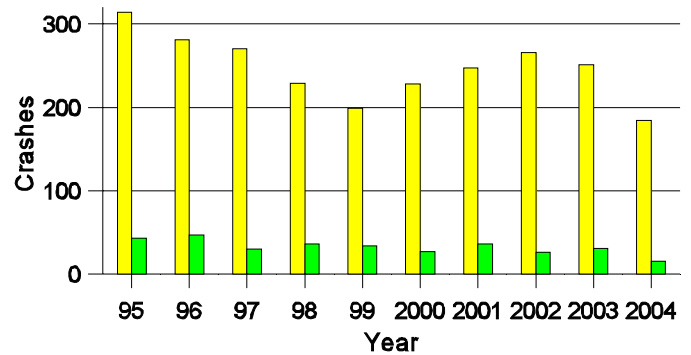
by Alcohol Involvement



■ All Crashes  
■ Alcohol-involved Crashes

### Fatal and Injury Crashes in Grant County

by Alcohol Involvement



■ All Fatal and Injury Crashes  
■ Alcohol-involved Fatal and Injury Crashes

### Passenger Vehicle Seatbelt Usage and Injuries in Grant County, 2002-2004

Injury Level	2004		2003		2002	
	Total	No Belt	Total	No Belt	Total	No Belt
Killed	7	5	4	3	3	0
Incapacitating injury	41	8	49	10	45	11
Visible injury	52	8	77	13	81	16
Complaint of injury	132	3	200	10	198	11
Unhurt	1,090	14	1,257	18	1,363	35
<b>Total</b>	<b>1,322</b>	<b>38</b>	<b>1,587</b>	<b>54</b>	<b>1,690</b>	<b>73</b>

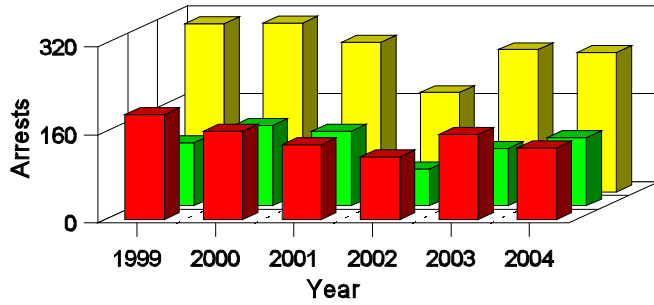
### Lifetime DWI Convictions for Drivers Convicted of DWI Violations in Grant County, 2004

Convictions	Since 1999	Since 1980
1st	109	79
2nd	21	27
3rd	10	15
4th	0	9
5th	0	6
6th	0	2
7th	0	0
8th	0	1
9th	0	0
10 or more	0	1
<b>Total</b>	<b>140</b>	<b>140</b>

Convictions are counts of people convicted of DWI by 7/2005 for violations in 2004 in Grant County.  
 Convictions are not comparable to arrests.

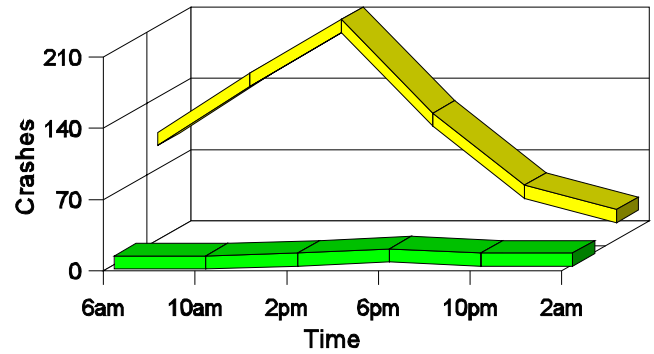
### DWI Arrests in Grant County

Showing First Arrests and Repeat Offenders



### Crashes in Grant County

by Hour and Alcohol Involvement



### Crashes in Grant County by Class, 2004

Class	Crashes					People	
	Total	% of Total	Fatal	% of Fatal	Injury	Killed	Injured
Other vehicle	328	50	1	14	99	1	167
Pedestrian	5	1	0	0	5	0	7
Fixed object	93	14	1	14	19	1	24
Veh. on other roadway	1	0	0	0	0	0	0
Parked vehicle	67	10	0	0	6	0	7
Overturn	59	9	5	71	36	5	57
Other non-collision	13	2	0	0	3	0	3
Pedalcyclist	9	1	0	0	7	0	7
Animal	71	11	0	0	2	0	2
Other object	8	1	0	0	0	0	0
<b>Total</b>	<b>654</b>	<b>100</b>	<b>7</b>	<b>100</b>	<b>177</b>	<b>7</b>	<b>274</b>

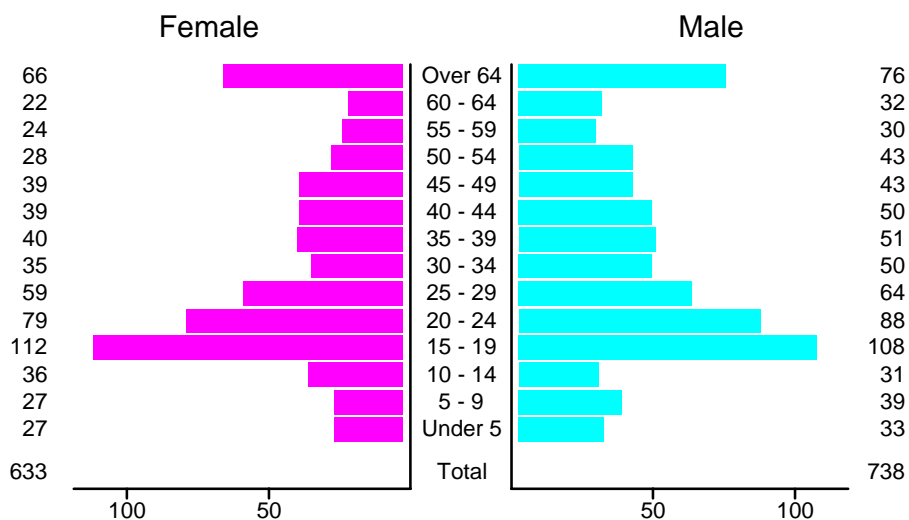
### Crashes in Grant County by Vehicle Type, 2004

Vehicle Type	Vehicles					People	
	Total	% of Total	Fatal	% of Fatal	Injury	Killed	Injured
Passenger car	503	46	4	50	131	4	118
Pickup	317	29	4	50	87	3	73
Semi	23	2	0	0	5	0	2
Bus	3	0	0	0	2	0	15
Motorcycle	15	1	0	0	11	0	12
Pedalcyclist	9	1	0	0	7	0	7
Pedestrian	5	0	0	0	5	0	5
Van/4 WD	153	14	0	0	51	0	41
Other	6	1	0	0	2	0	0
Unknown	58	5	0	0	2	0	1
<b>Total</b>	<b>1,092</b>	<b>100</b>	<b>8</b>	<b>100</b>	<b>303</b>	<b>7</b>	<b>274</b>

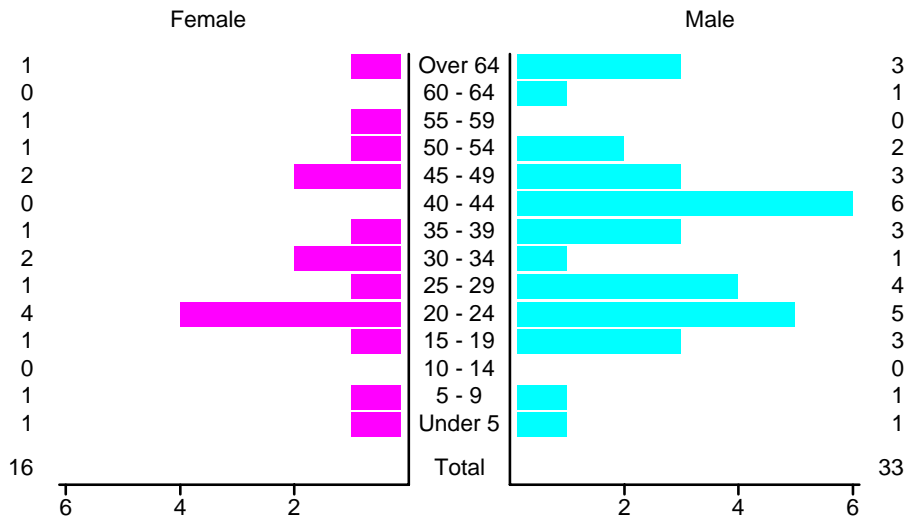
### Crashes in Grant County by Top Contributing Factor, 2004

Contributing Factor	Crashes				People		
	Total	% of Total	Fatal	% of Fatal	Injury	Killed	Injured
Alcohol involvement	28	4	4	57	11	4	19
Red light running	45	7	0	0	21	0	28
Failing to yield	71	11	0	0	29	0	46
Excessive speed	73	11	1	14	28	1	44
Driving left of center	20	3	0	0	7	0	8
Following too close	94	14	0	0	25	0	34
Improper turning	20	3	0	0	3	0	3
Improper overtaking	6	1	0	0	1	0	18
Improper backing	37	6	0	0	1	0	1
Inop. traffic control	1	0	0	0	0	0	0
Mechanical defect	25	4	0	0	5	0	11
Driver inattention	131	20	1	14	32	1	45
Improper driving	3	0	0	0	1	0	1
Other	100	15	1	14	13	1	16
<b>Total</b>	<b>654</b>	<b>100</b>	<b>7</b>	<b>100</b>	<b>177</b>	<b>7</b>	<b>274</b>

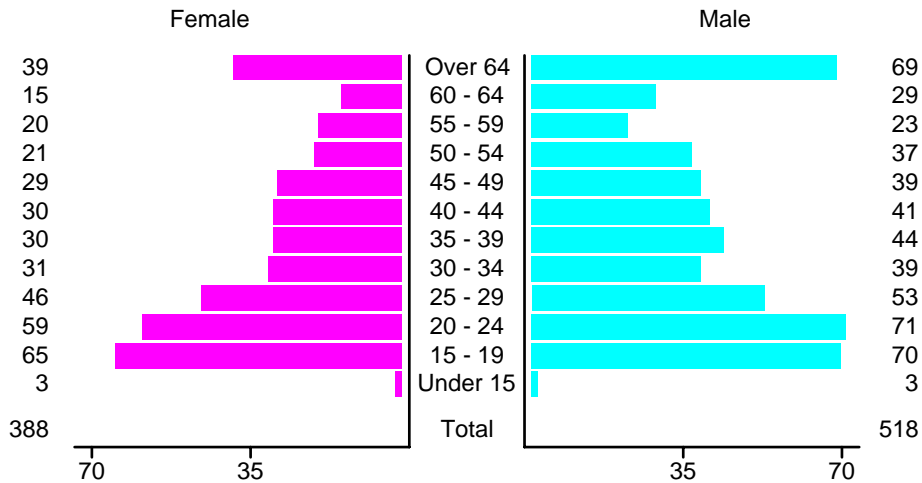
### People in Crashes by Age and Sex in Grant County, 2004



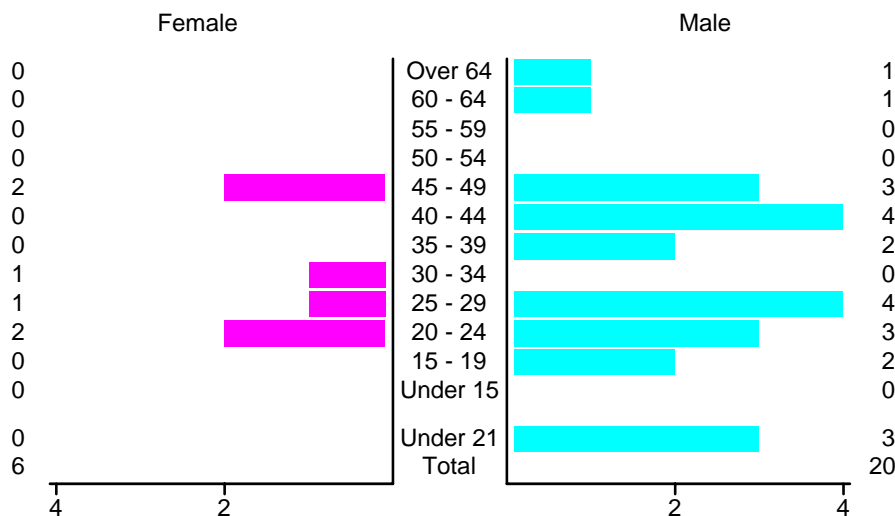
### People in Alcohol-Involved Crashes in Grant County, 2004 by Age and Sex



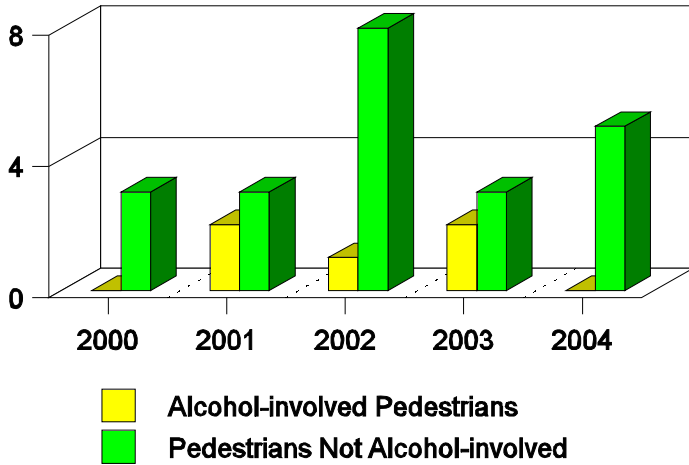
### Drivers in Crashes by Age and Sex in Grant County, 2004



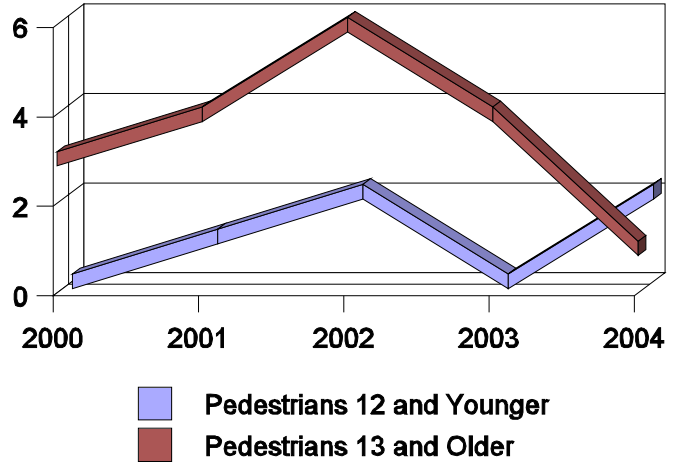
### Alcohol-Involved Drivers in Crashes in Grant County, 2004 by Age and Sex



**Pedestrian Crashes in Grant County  
by Pedestrian Alcohol-involvement, 2000-2004**



**Pedestrian Crashes in Grant County  
by Age Group, 2000-2004**



**'Teenagers' and Young Adults in Crashes in Grant County by Vehicle Type, 2004**

Vehicle	'Teenage' Drivers			Young Adult Drivers		
	Total	Fatal	Injury	Total	Fatal	Injury
Passenger car	86	1	24	76	0	20
Pickup	36	0	14	38	0	10
Semi	0	0	0	3	0	1
Motorcycle	1	0	1	2	0	2
Pedalcyclist	0	0	0	3	0	3
Pedestrian	0	0	0	1	0	1
Van/4 WD	12	0	5	9	0	2
Unknown	0	0	0	2	0	0
<b>Total</b>	<b>135</b>	<b>1</b>	<b>44</b>	<b>134</b>	<b>0</b>	<b>39</b>

**'Teenagers' and Young Adults in Crashes in Grant County, 1995-2004**

Year	'Teenagers'				Young Adults			
	All Crashes		Alcohol Crashes		All Crashes		Alcohol Crashes	
	Killed	Injured	Killed	Injured	Killed	Injured	Killed	Injured
2004	1	35	1	3	0	25	0	3
2003	0	53	0	8	1	50	1	8
2002	0	65	0	4	0	41	0	5
2001	0	65	0	13	0	47	0	9
2000	2	62	1	14	0	45	0	12
1999	2	42	1	13	3	45	1	13
1998	0	67	0	11	0	33	0	5
1997	2	85	0	6	1	58	0	5
1996	1	90	1	14	1	54	1	9
1995	1	109	0	24	1	63	0	11