

# Harding County Report, 2004

## Demographics

In 2004, there were 622 licensed drivers in Harding County. Of these, there were 294 females and 328 males. The population in Harding County was 774. The total number of crashes in 2004 was 15, yielding a crash rate of 19 per thousand people (the total number of crashes 15 divided by the population 774 multiplied by 1,000). The corresponding rate for the state was 27 per thousand people.

## General Crash Information

Since 1995 the number of crashes has shown no consistent pattern. Fatal and injury crashes have also shown no consistent pattern since 1995. Belt usage (as a percentage) has increased from last year, while belt usage in crashes involving visible and incapacitating injuries has also increased.

## Alcohol-related Crash Information

Information about alcohol-involved crashes is included in all sections of this report. The sole person convicted of DWI in 2004 had been convicted of DWI previously.

## Crash Specifics

Crashes involving overturns were the most common class, accounting for 27 percent of all crashes. Pickups were the vehicle type most often involved in crashes, accounting for 50 percent of all vehicles in crashes. Passenger cars accounted for 17 percent of vehicles involved in crashes. Together these two vehicle types comprised 33 percent of the vehicles involved in injury crashes. The most common top contributing factors were excessive speed and driver inattention. There were no fatal crashes in 2004.

## People in Crashes

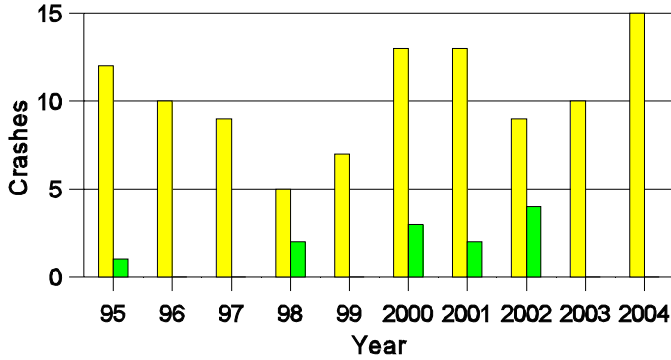
Overall, males were 82 percent of drivers in crashes, although they account for 53 percent of licensed drivers in Harding County. There were no alcohol involved crashes. There were no pedestrians involved in crashes. In 2004, no 'teenagers' and no young adults were killed in crashes in Harding County. Statewide 18 percent of alcohol-involved drivers were under 21, in Harding County there were no alcohol-involved drivers under 21.

**Note:** The 1999 crash file contains 15% fewer crashes than the 1998 file. This may be due to problems implementing the new system after the old system failed, or to under reporting. Care should be used in interpreting differences between 1999 and other years in this report.

- Location of arrest/conviction was determined by police agency/court location, not driver residence.
- Crashes and drivers were counted by the city of occurrence/residence.
- Population was counted according to the Census definition, using 2004 estimates.
- Young adults are people between the ages of 20 and 24.
- 'Teenagers' are people between the ages of 15 and 19.
- Tables only include variable values for which there are data.

### Crashes in Harding County

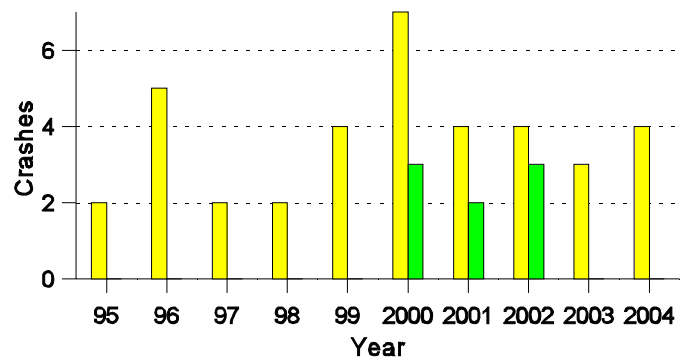
#### by Alcohol Involvement



■ All Crashes  
■ Alcohol-involved Crashes

### Fatal and Injury Crashes in Harding County

#### by Alcohol Involvement



■ All Fatal and Injury Crashes  
■ Alcohol-involved Fatal and Injury Crashes

### Passenger Vehicle Seatbelt Usage and Injuries in Harding County, 2002-2004

Injury Level	2004		2003		2002	
	Total	No Belt	Total	No Belt	Total	No Belt
Killed	0	0	0	0	1	1
Incapacitating injury	0	0	0	0	1	0
Visible injury	0	0	3	1	3	2
Complaint of injury	3	0	1	0	1	0
Unhurt	16	1	14	0	12	2
<b>Total</b>	<b>19</b>	<b>1</b>	<b>18</b>	<b>1</b>	<b>18</b>	<b>5</b>

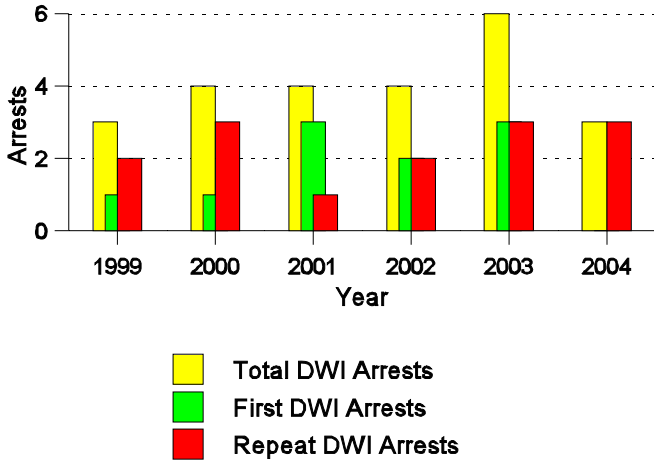
### Lifetime DWI Convictions for Drivers Convicted of DWI Violations in Harding County, 2004

Convictions	Since 1999	Since 1980
1st	0	0
2nd	1	0
3rd	0	1
4th	0	0
5th	0	0
6th	0	0
7th	0	0
8th	0	0
9th	0	0
10 or more	0	0
<b>Total</b>	<b>1</b>	<b>1</b>

Convictions are counts of people convicted of DWI by 7/2005 for violations in 2004 in Harding County. Convictions are not comparable to arrests.

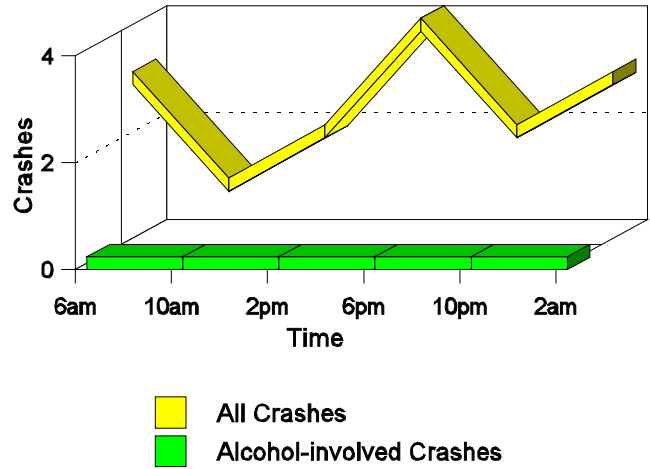
### DWI Arrests in Harding County

Showing First Arrests and Repeat Offenders



### Crashes in Harding County

by Hour and Alcohol Involvement



### Crashes in Harding County by Class, 2004

Class	Crashes					People	
	Total	% of Total	Fatal	% of Fatal	Injury	Killed	Injured
Other vehicle	3	20	0	0	2	0	3
Fixed object	2	13	0	0	1	0	1
Overturn	4	27	0	0	1	0	1
Animal	6	40	0	0	0	0	0
<b>Total</b>	<b>15</b>	<b>100</b>	<b>0</b>	<b>0</b>	<b>4</b>	<b>0</b>	<b>5</b>

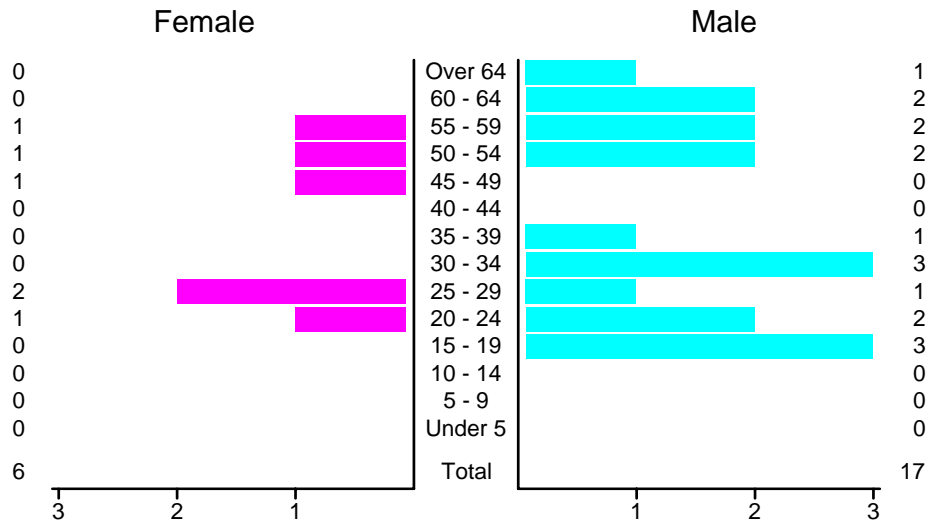
### Crashes in Harding County by Vehicle Type, 2004

Vehicle Type	Vehicles					People	
	Total	% of Total	Fatal	% of Fatal	Injury	Killed	Injured
Passenger car	3	17	0	0	1	0	1
Pickup	9	50	0	0	1	0	1
Semi	3	17	0	0	3	0	2
Van/4 WD	3	17	0	0	1	0	1
<b>Total</b>	<b>18</b>	<b>100</b>	<b>0</b>	<b>0</b>	<b>6</b>	<b>0</b>	<b>5</b>

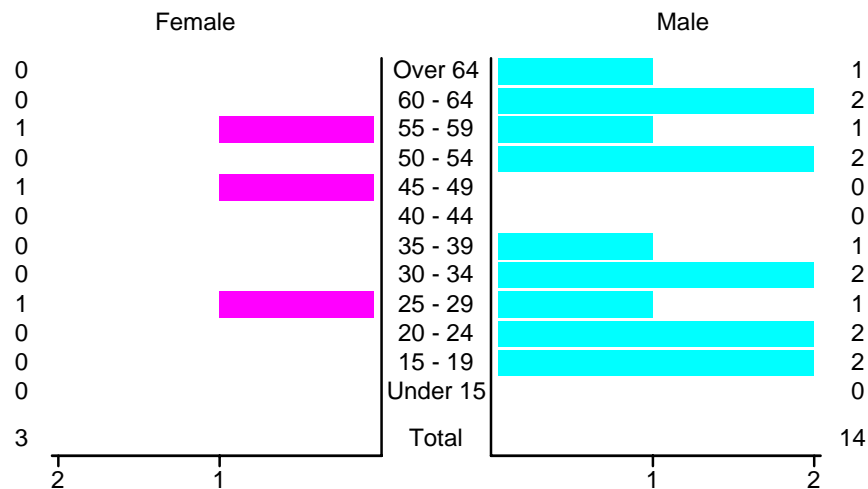
### Crashes in Harding County by Top Contributing Factor, 2004

Contributing Factor	Crashes				People		
	Total	% of Total	Fatal	% of Fatal	Injury	Killed	Injured
Excessive speed	6	40	0	0	2	0	2
Driving left of center	1	7	0	0	0	0	0
Improper backing	1	7	0	0	0	0	0
Driver inattention	2	13	0	0	2	0	3
Other	5	33	0	0	0	0	0
<b>Total</b>	<b>15</b>	<b>100</b>	<b>0</b>	<b>0</b>	<b>4</b>	<b>0</b>	<b>5</b>

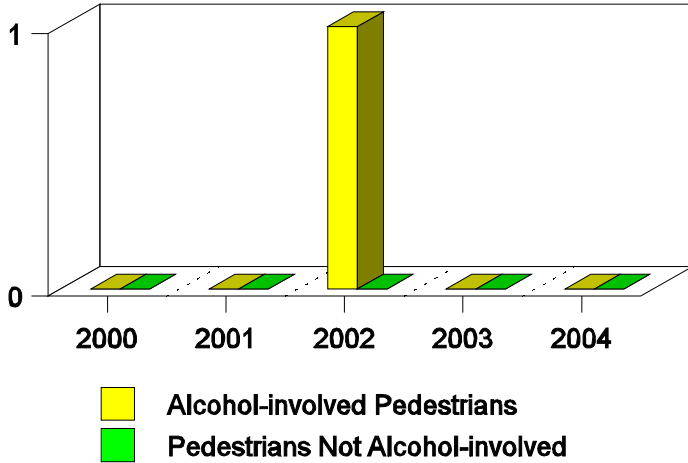
### People in Crashes by Age and Sex in Harding County, 2004



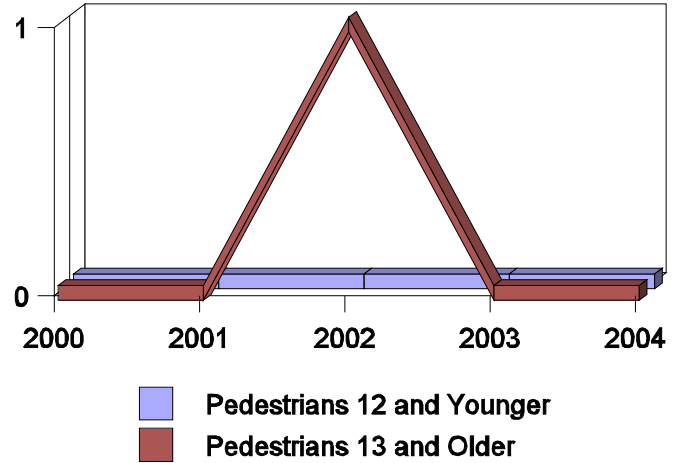
### Drivers in Crashes by Age and Sex in Harding County, 2004



**Pedestrian Crashes in Harding County  
by Pedestrian Alcohol-involvement, 2000-2004**



**Pedestrian Crashes in Harding County  
by Age Group, 2000-2004**



**'Teenagers' and Young Adults in Crashes in Harding County by Vehicle Type, 2004**

Vehicle	'Teenage' Drivers			Young Adult Drivers		
	Total	Fatal	Injury	Total	Fatal	Injury
Passenger car	1	0	0	1	0	1
Pickup	1	0	0	0	0	0
Semi	0	0	0	1	0	1
Total	2	0	0	2	0	2

**'Teenagers' and Young Adults in Crashes in Harding County, 1995-2004**

Year	'Teenagers'				Young Adults			
	All Crashes		Alcohol Crashes		All Crashes		Alcohol Crashes	
	Killed	Injured	Killed	Injured	Killed	Injured	Killed	Injured
2004	0	0	0	0	0	2	0	0
2003	0	0	0	0	0	3	0	0
2002	1	0	1	0	0	1	0	0
2001	0	0	0	0	0	0	0	0
2000	0	2	0	0	1	1	1	0
1999	0	0	0	0	0	0	0	0
1998	0	3	0	0	0	0	0	0
1997	0	0	0	0	0	1	0	0
1996	0	2	0	0	1	1	0	0
1995	0	0	0	0	0	0	0	0