

Roosevelt County Report, 2004

Demographics

In 2004, there were 11,792 licensed drivers in Roosevelt County. Of these, there were 5,989 females and 5,803 males. The population in Roosevelt County was 18,165. The total number of crashes in 2004 was 410, yielding a crash rate of 23 per thousand people (the total number of crashes 410 divided by the population 18,165 multiplied by 1,000). The corresponding rate for the state was 27 per thousand people.

General Crash Information

Since 1995 the number of crashes has shown no consistent pattern. Fatal and injury crashes have also shown no consistent pattern since 1995. Belt usage (as a percentage) has decreased from last year, while belt usage in crashes involving visible and incapacitating injuries has also decreased.

Alcohol-related Crash Information

Information about alcohol-involved crashes is included in all sections of this report. Of the 76 people convicted of DWI in Roosevelt County in 2004, 79 percent were first-time DWI convictions (number of first convictions 60 divided by the total number of people convicted 76 multiplied by 100). The corresponding percentage for the state was 62.

Crash Specifics

Crashes involving other vehicles were the most common class, accounting for 60 percent of all crashes. Crashes involving overturns, fixed objects, and an other vehicle resulted in fatalities. Passenger cars were the vehicle type most often involved in crashes, accounting for 48 percent of all vehicles in crashes. Pickups also accounted for 29 percent of vehicles involved in crashes. Together these two vehicle types comprised 72 percent of the vehicles involved in injury crashes. The two most common top contributing factors were failing to yield and excessive speed. There were six fatal crashes in 2004. The most common top contributing factor for the fatal crashes was alcohol involvement.

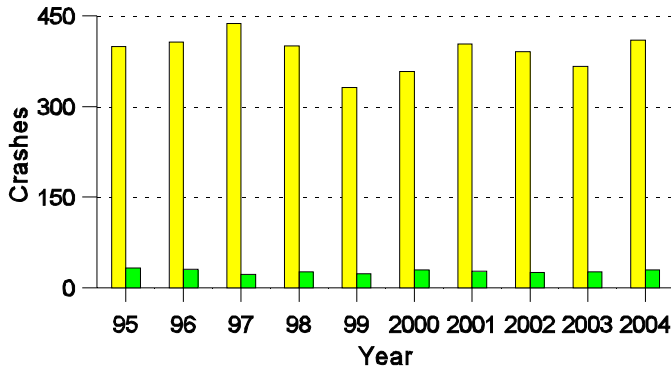
People in Crashes

Overall, males were 54 percent of drivers in crashes, although they account for only 49 percent of licensed drivers in Roosevelt County. There were three pedestrians involved in crashes. In 2004, four 'teenagers' and no young adults were killed in crashes in Roosevelt County. Statewide 18 percent of alcohol-involved drivers were under 21; in Roosevelt County 25 percent were under 21.

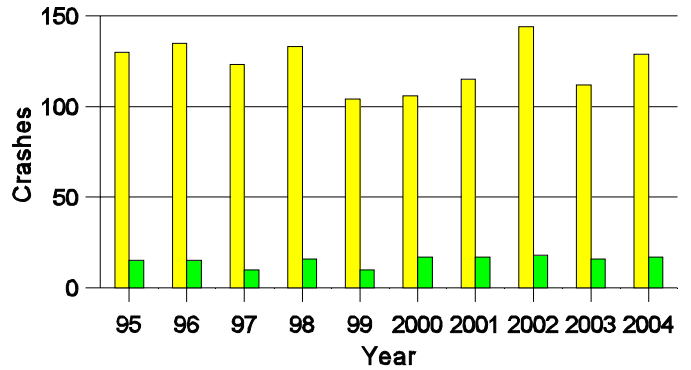
Note: The 1999 crash file contains 15% fewer crashes than the 1998 file. This may be due to problems implementing the new system after the old system failed, or to under reporting. Care should be used in interpreting differences between 1999 and other years in this report.

- Location of arrest/conviction was determined by police agency/court location, not driver residence.
- Crashes and drivers were counted by the city of occurrence/residence.
- Population was counted according to the Census definition, using 2004 estimates.
- Young adults are people between the ages of 20 and 24.
'Teenagers' are people between the ages of 15 and 19.
- Tables only include variable values for which there are data.

Crashes in Roosevelt County by Alcohol Involvement



Fatal and Injury Crashes in Roosevelt County by Alcohol Involvement



All Crashes
 Alcohol-involved Crashes

All Fatal and Injury Crashes
 Alcohol-involved Fatal and Injury Crashes

Passenger Vehicle Seatbelt Usage and Injuries in Roosevelt County, 2002-2004

Injury Level	2004		2003		2002	
	Total	No Belt	Total	No Belt	Total	No Belt
Killed	5	4	1	1	3	2
Incapacitating injury	27	6	24	7	42	9
Visible injury	37	9	50	8	56	9
Complaint of injury	101	6	72	4	84	7
Unhurt	688	20	553	13	588	26
Total	858	45	700	33	773	53

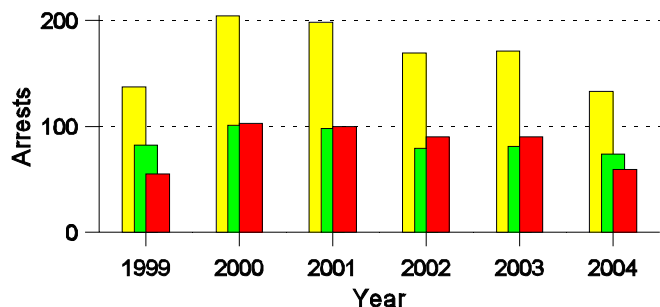
**Lifetime DWI Convictions for Drivers
Convicted of DWI Violations in Roosevelt County, 2004**

Convictions	Since 1999	Since 1980
1st	71	60
2nd	4	12
3rd	1	3
4th	0	1
5th	0	0
6th	0	0
7th	0	0
8th	0	0
9th	0	0
10 or more	0	0
Total	76	76

Convictions are counts of people convicted of DWI by 7/2005 for violations in 2004 in Roosevelt County
 Convictions are not comparable to arrests.

DWI Arrests in Roosevelt County

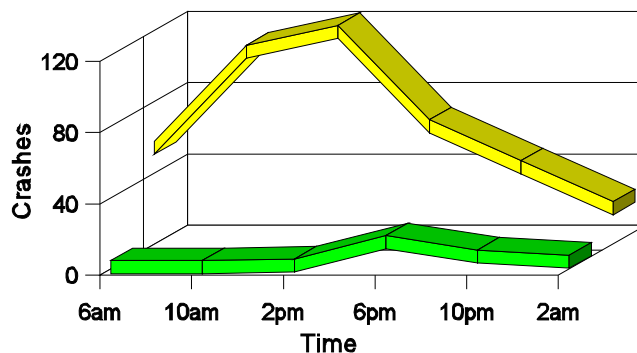
Showing First Arrests and Repeat Offenders



- Total DWI Arrests
- First DWI Arrests
- Repeat DWI Arrests

Crashes in Roosevelt County

by Hour and Alcohol Involvement



- All Crashes
- Alcohol-involved Crashes

Crashes in Roosevelt County by Class, 2004

Class	Crashes					People	
	Total	% of Total	Fatal	% of Fatal	Injury	Killed	Injured
Other vehicle	248	60	1	17	78	1	127
Pedestrian	3	1	0	0	3	0	3
Fixed object	44	11	2	33	6	3	10
Veh. on other roadway	1	0	0	0	1	0	1
Parked vehicle	44	11	0	0	4	0	7
Overturn	43	10	3	50	22	3	31
Other non-collision	3	1	0	0	2	0	2
Pedalcyclist	3	1	0	0	3	0	3
Animal	18	4	0	0	4	0	10
Other object	3	1	0	0	0	0	0
Total	410	100	6	100	123	7	194

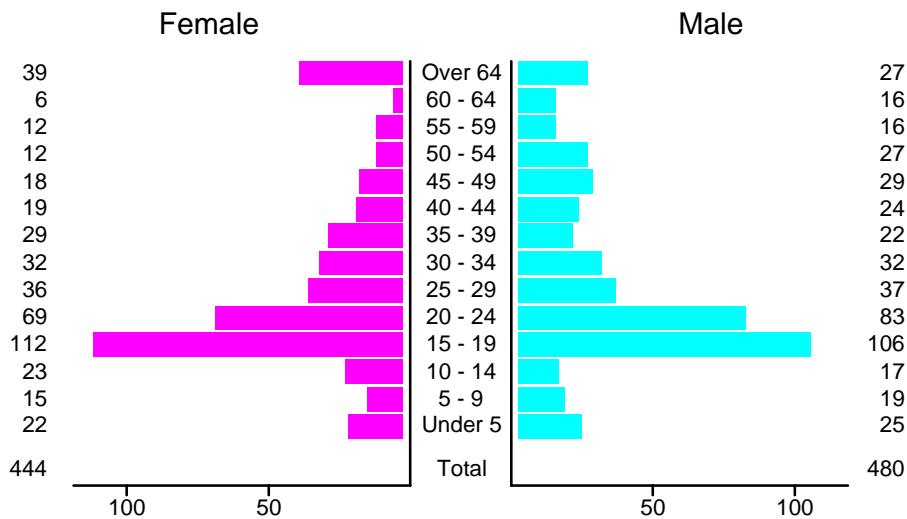
Crashes in Roosevelt County by Vehicle Type, 2004

Vehicle Type	Vehicles					People	
	Total	% of Total	Fatal	% of Fatal	Injury	Killed	Injured
Passenger car	348	48	5	63	101	3	96
Pickup	210	29	3	38	55	4	38
Semi	27	4	0	0	11	0	4
Bus	1	0	0	0	0	0	0
Motorcycle	8	1	0	0	7	0	9
Pedalcyclist	3	0	0	0	3	0	3
Pedestrian	3	0	0	0	3	0	3
Van/4 WD	90	12	0	0	33	0	40
Other	3	0	0	0	1	0	0
Unknown	28	4	0	0	3	0	1
Total	721	100	8	100	217	7	194

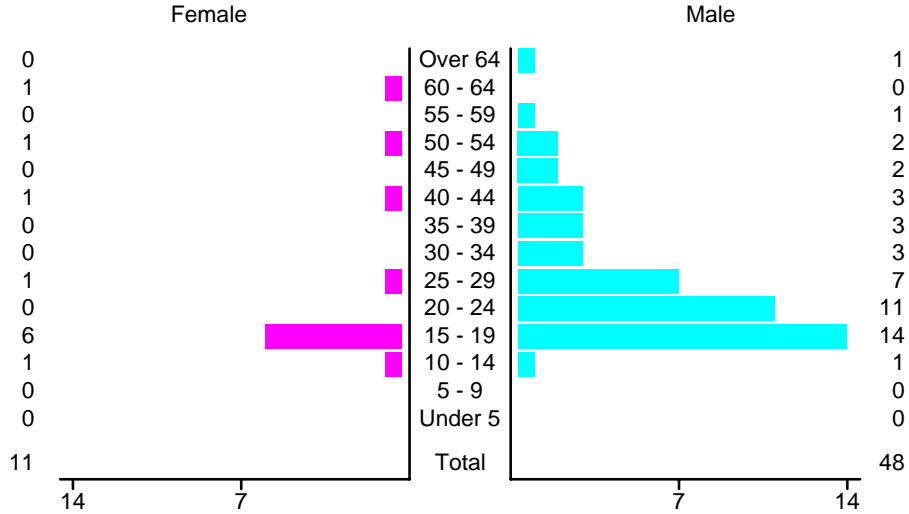
Crashes in Roosevelt County by Top Contributing Factor, 2004

Contributing Factor	Crashes				People		
	Total	% of Total	Fatal	% of Fatal	Injury	Killed	Injured
Alcohol involvement	30	7	3	50	14	4	27
Red light running	16	4	0	0	8	0	10
Failing to yield	85	21	0	0	28	0	48
Excessive speed	62	15	0	0	28	0	41
Driving left of center	6	1	2	33	1	2	4
Following too close	47	11	0	0	15	0	22
Improper turning	18	4	0	0	4	0	4
Improper overtaking	5	1	1	17	1	1	2
Improper backing	36	9	0	0	1	0	3
Mechanical defect	5	1	0	0	1	0	2
Driver inattention	59	14	0	0	14	0	19
Other	41	10	0	0	8	0	12
Total	410	100	6	100	123	7	194

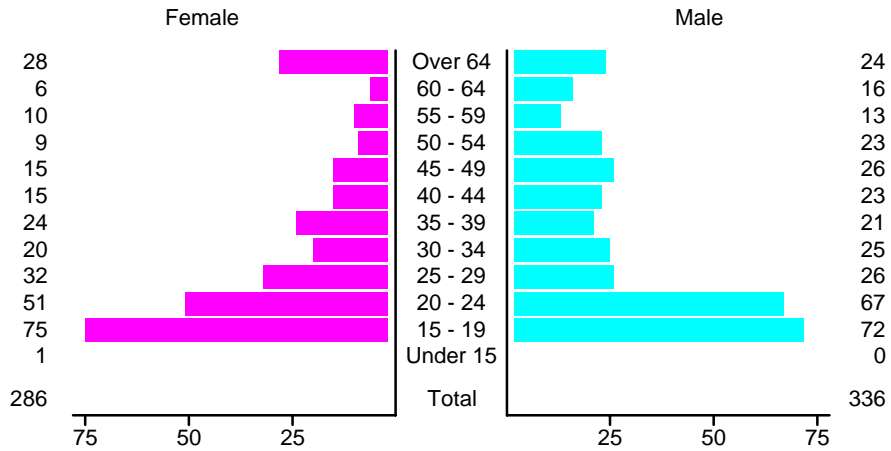
People in Crashes by Age and Sex in Roosevelt County, 2004



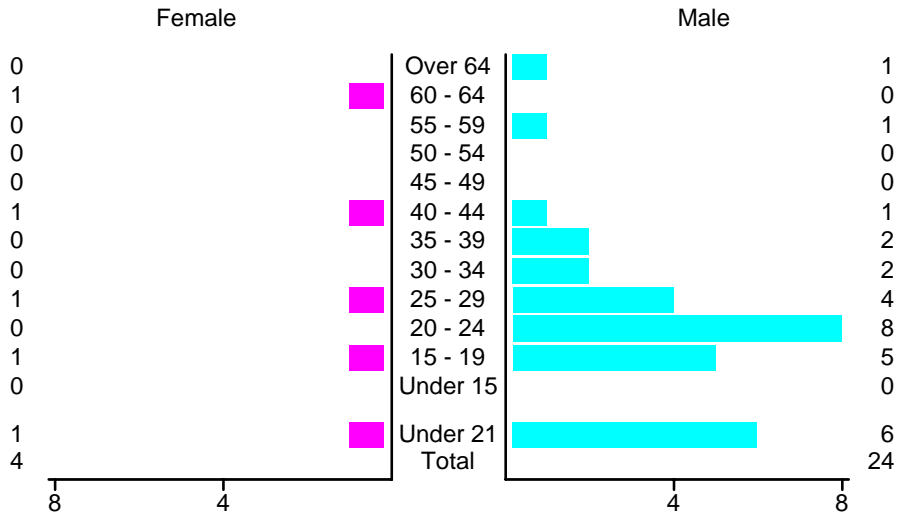
**People in Alcohol-Involved Crashes in Roosevelt County, 2004
by Age and Sex**



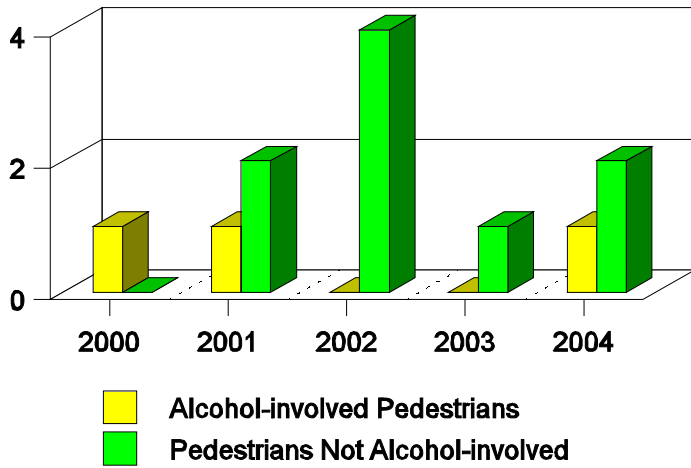
Drivers in Crashes by Age and Sex in Roosevelt County, 2004



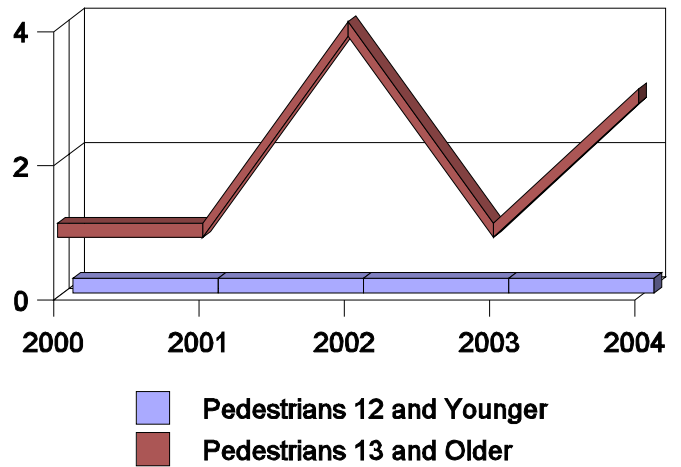
**Alcohol-Involved Drivers in Crashes in Roosevelt County, 2004
by Age and Sex**



**Pedestrian Crashes in Roosevelt County
by Pedestrian Alcohol-involvement, 2000-2004**



**Pedestrian Crashes in Roosevelt County
by Age Group, 2000-2004**



'Teenagers' and Young Adults in Crashes in Roosevelt County by Vehicle Type, 2004

Vehicle	'Teenage' Drivers			Young Adult Drivers		
	Total	Fatal	Injury	Total	Fatal	Injury
Passenger car	88	0	28	69	1	18
Pickup	44	2	15	31	0	10
Semi	0	0	0	4	0	1
Motorcycle	0	0	0	2	0	2
Pedalcyclist	1	0	1	0	0	0
Pedestrian	1	0	1	1	0	1
Van/4 WD	15	0	6	12	0	5
Unknown	1	0	0	0	0	0
Total	150	2	51	119	1	37

'Teenagers' and Young Adults in Crashes in Roosevelt County, 1995-2004

Year	'Teenagers'				Young Adults			
	All Crashes		Alcohol Crashes		All Crashes		Alcohol Crashes	
	Killed	Injured	Killed	Injured	Killed	Injured	Killed	Injured
2004	4	54	4	8	0	25	0	5
2003	0	47	0	4	0	27	0	4
2002	0	59	0	8	2	37	1	8
2001	0	35	0	2	2	26	1	5
2000	2	40	1	7	0	31	0	2
1999	0	39	0	5	1	24	1	3
1998	1	51	0	7	0	27	0	7
1997	1	47	1	6	0	26	0	3
1996	0	54	0	9	1	30	1	3
1995	0	51	0	7	0	37	0	3