

# Torrance County Report, 2004

## Demographics

In 2004, there were 10,995 licensed drivers in Torrance County. Of these, there were 5,293 females and 5,702 males. The 2004 population in Torrance County was 16,864. The total number of crashes in 2004 was 342, yielding a crash rate of 20 per thousand people (the total number of crashes 342 divided by the population 16,864 multiplied by 1,000). The corresponding rate for the state was 27 per thousand people.

## General Crash Information

Since 1995 the number of crashes has shown no consistent pattern. Fatal and injury crashes have shown an upward trend since 2000. Belt usage (as a percentage) has increased from last year, while belt usage in crashes involving incapacitating injuries has also increased.

## Alcohol-related Crash Information

Information about alcohol-involved crashes is included in all sections of this report. Of the 86 people convicted of DWI in Torrance County in 2004, 53 percent were first-time DWI convictions (number of first convictions 46 divided by the total number of people convicted 86 multiplied by 100). The corresponding percentage for the state was 62.

## Crash Specifics

Crashes involving other vehicles were the most common class, accounting for 38 percent of all crashes. Crashes involving overturns and other vehicles were the most common crash classes involved in fatal crashes. Passenger cars were the vehicle type most often involved in crashes, accounting for 33 percent of all vehicles in crashes. Pickups accounted for 27 percent of vehicles involved in crashes. Together these two vehicle types comprised 54 percent of the vehicles involved in injury crashes. The two most common top contributing factors were excessive speed and driver inattention. There were 13 fatal crashes in 2004. The most common top contributing factor for the fatal crashes was excessive speed.

## People in Crashes

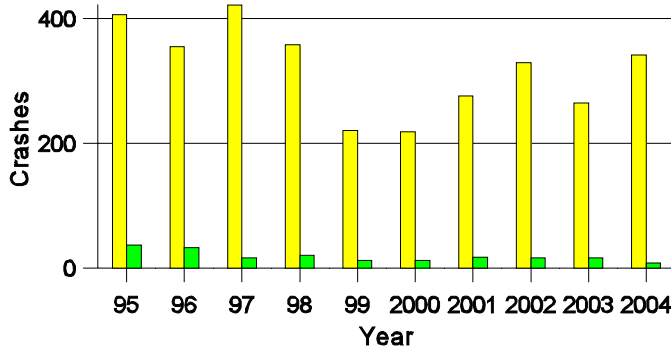
Overall, males were 70 percent of drivers in crashes, although they account for only 52 percent of licensed drivers in Torrance County. There were three pedestrians involved in crashes. In 2004, one 'teenager' and two young adults were killed in crashes in Torrance County. Statewide 18 percent of alcohol-involved drivers were under 21; in Torrance County 13 percent were under 21.

**Note:** The 1999 crash file contains 15% fewer crashes than the 1998 file. This may be due to problems implementing the new system after the old system failed, or to under reporting. Care should be used in interpreting differences between 1999 and other years in this report.

- Location of arrest/conviction was determined by police agency/court location, not driver residence.
- Crashes and drivers were counted by the city of occurrence/residence.
- Population was counted according to the Census definition, using 2004 estimates.
- Young adults are people between the ages of 20 and 24.  
'Teenagers' are people between the ages of 15 and 19.
- Tables only include variable values for which there are data.

### Crashes in Torrance County

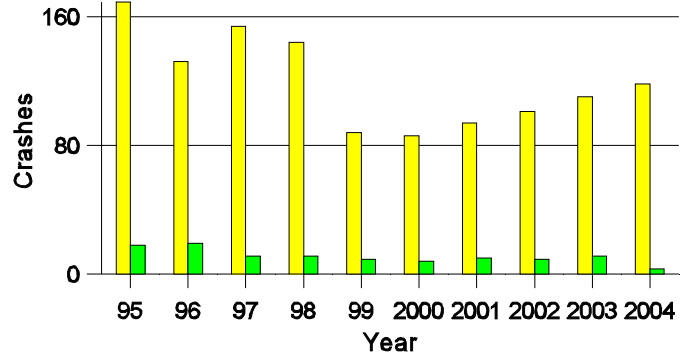
#### by Alcohol Involvement



■ All Crashes  
■ Alcohol-involved Crashes

### Fatal and Injury Crashes in Torrance County

#### by Alcohol Involvement



■ All Fatal and Injury Crashes  
■ Alcohol-involved Fatal and Injury Crashes

### Passenger Vehicle Seatbelt Usage and Injuries in Torrance County, 2002-2004

Injury Level	2004		2003		2002	
	Total	No Belt	Total	No Belt	Total	No Belt
Killed	12	6	6	4	3	1
Incapacitating injury	23	5	42	14	29	5
Visible injury	55	4	27	1	41	8
Complaint of injury	48	6	62	7	49	3
Unhurt	467	9	375	5	442	11
<b>Total</b>	<b>605</b>	<b>30</b>	<b>512</b>	<b>31</b>	<b>564</b>	<b>28</b>

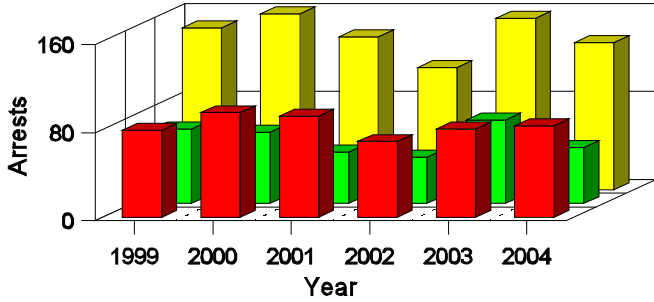
### Lifetime DWI Convictions for Drivers Convicted of DWI Violations in Torrance County, 2004

Convictions	Since 1999	Since 1980
1st	63	46
2nd	19	15
3rd	3	12
4th	1	7
5th	0	4
6th	0	2
7th	0	0
8th	0	0
9th	0	0
10 or more	0	0
<b>Total</b>	<b>86</b>	<b>86</b>

Convictions are counts of people convicted of DWI by 7/2005 for violations in 2004 in Torrance County. Convictions are not comparable to arrests.

### DWI Arrests in Torrance County

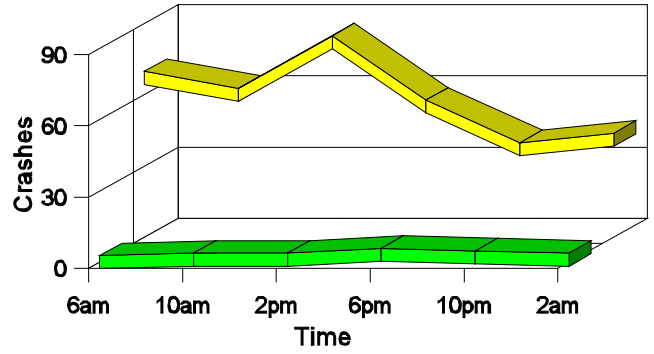
Showing First Arrests and Repeat Offenders



- Total DWI Arrests
- First DWI Arrests
- Repeat DWI Arrests

### Crashes in Torrance County

by Hour and Alcohol Involvement



- All Crashes
- Alcohol-involved Crashes

### Crashes in Torrance County by Class, 2004

Class	Crashes					People	
	Total	% of Total	Fatal	% of Fatal	Injury	Killed	Injured
Other vehicle	131	38	5	38	30	8	53
Pedestrian	3	1	1	8	2	1	2
Fixed object	58	17	0	0	14	0	16
Parked vehicle	10	3	1	8	4	1	8
Overturn	100	29	6	46	50	6	78
Other non-collision	14	4	0	0	2	0	3
Pedalcyclist	1	0	0	0	0	0	0
Animal	15	4	0	0	1	0	1
Other object	10	3	0	0	2	0	3
<b>Total</b>	<b>342</b>	<b>100</b>	<b>13</b>	<b>100</b>	<b>105</b>	<b>16</b>	<b>164</b>

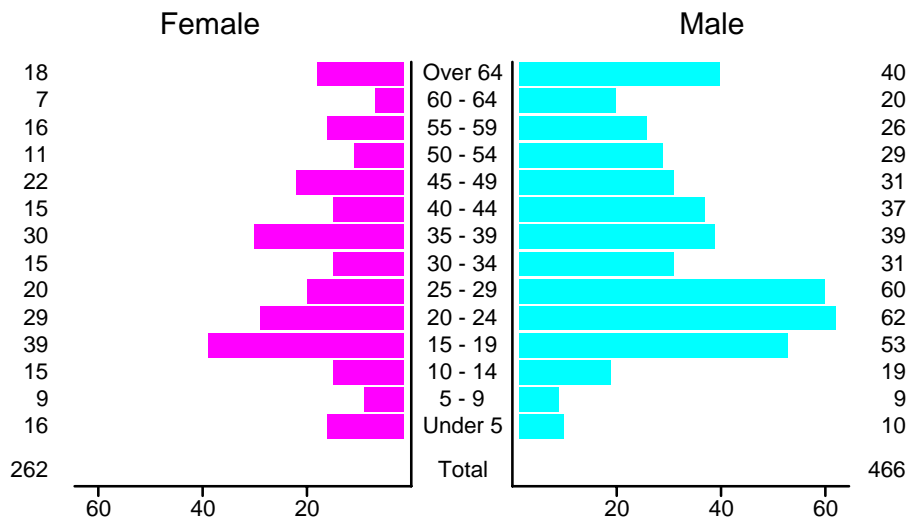
### Crashes in Torrance County by Vehicle Type, 2004

Vehicle Type	Vehicles					People	
	Total	% of Total	Fatal	% of Fatal	Injury	Killed	Injured
Passenger car	164	33	7	33	39	8	51
Pickup	135	27	3	14	40	0	48
Semi	98	20	5	24	32	1	25
Bus	1	0	0	0	1	0	1
Motorcycle	3	1	1	5	2	1	4
Pedalcyclist	1	0	0	0	0	0	0
Pedestrian	3	1	1	5	2	1	2
Van/4 WD	84	17	3	14	26	4	32
Other	3	1	1	5	2	1	1
Unknown	10	2	0	0	1	0	0
<b>Total</b>	<b>502</b>	<b>100</b>	<b>21</b>	<b>100</b>	<b>145</b>	<b>16</b>	<b>164</b>

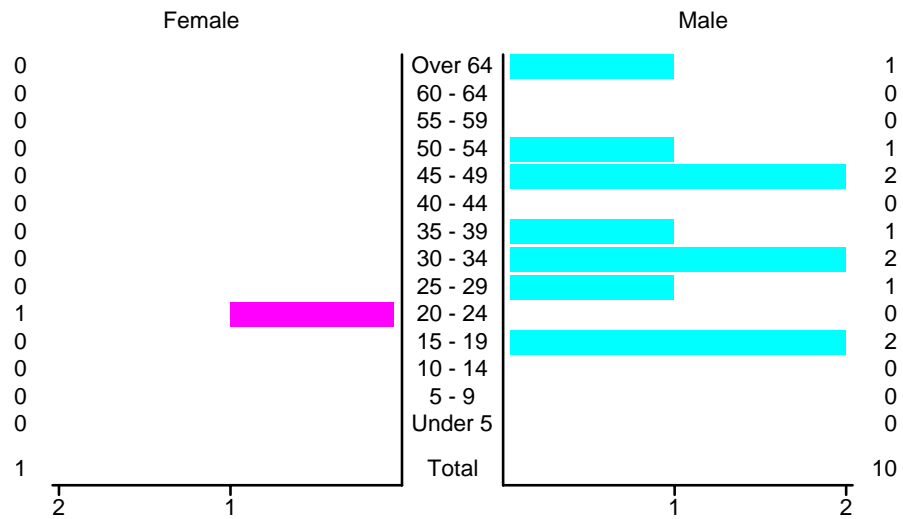
### Crashes in Torrance County by Top Contributing Factor, 2004

Contributing Factor	Crashes				People		
	Total	% of Total	Fatal	% of Fatal	Injury	Killed	Injured
Alcohol involvement	8	2	1	8	2	1	2
Red light running	4	1	0	0	0	0	0
Failing to yield	26	8	0	0	5	0	9
Excessive speed	97	28	3	23	42	3	68
Driving left of center	11	3	2	15	5	3	12
Following too close	22	6	0	0	5	0	7
Improper turning	4	1	1	8	0	2	0
Improper overtaking	10	3	0	0	3	0	7
Improper backing	6	2	0	0	0	0	0
Mechanical defect	17	5	0	0	3	0	5
Driver inattention	71	21	1	8	27	2	38
Improper driving	1	0	1	8	0	1	0
Other	65	19	4	31	13	4	16
<b>Total</b>	<b>342</b>	<b>100</b>	<b>13</b>	<b>100</b>	<b>105</b>	<b>16</b>	<b>164</b>

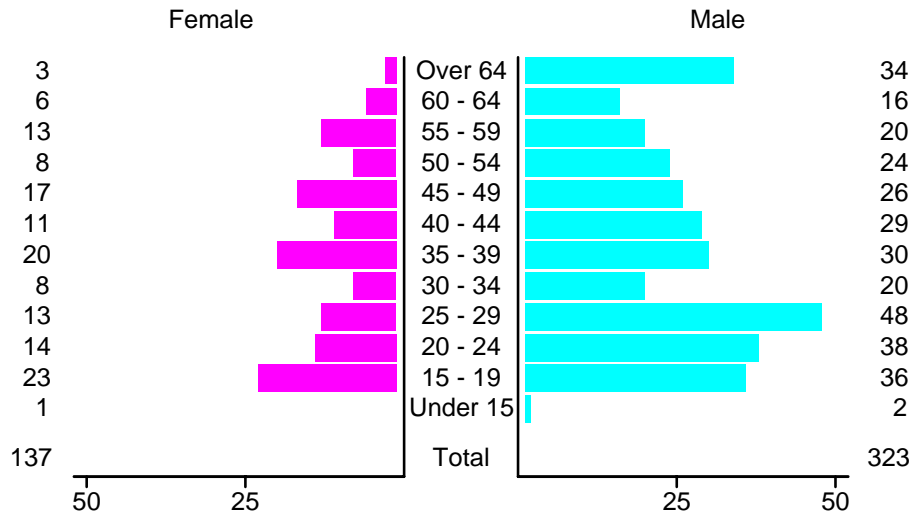
### People in Crashes by Age and Sex in Torrance County, 2004



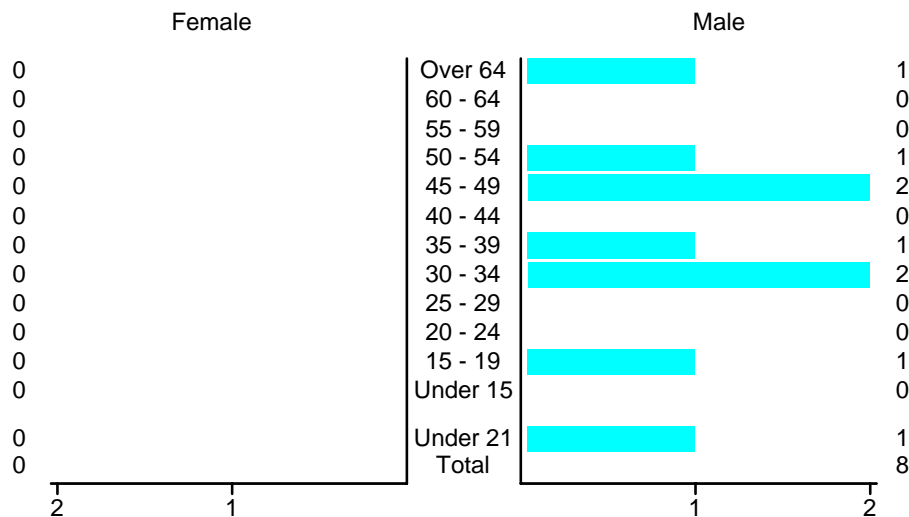
### People in Alcohol-Involved Crashes in Torrance County, 2004 by Age and Sex



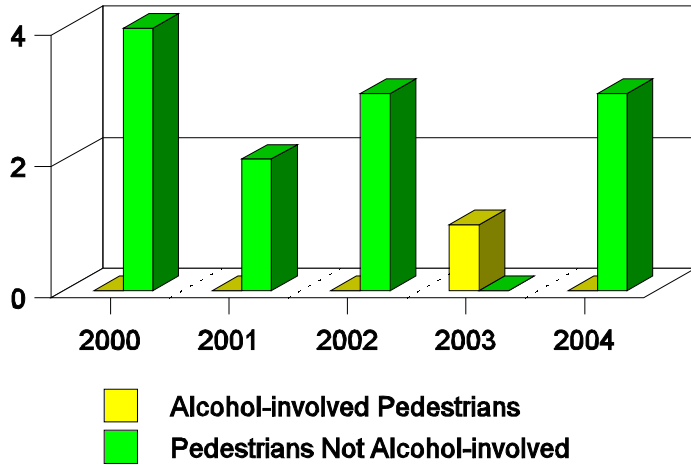
### Drivers in Crashes by Age and Sex in Torrance County, 2004



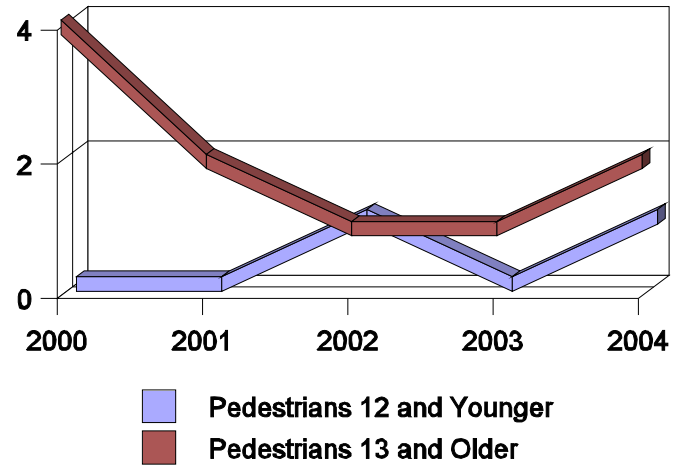
### Alcohol-Involved Drivers in Crashes in Torrance County, 2004 by Age and Sex



**Pedestrian Crashes in Torrance County  
by Pedestrian Alcohol-involvement, 2000-2004**



**Pedestrian Crashes in Torrance County  
by Age Group, 2000-2004**



**'Teenagers' and Young Adults in Crashes in Torrance County by Vehicle Type, 2004**

Vehicle	'Teenage' Drivers			Young Adult Drivers		
	Total	Fatal	Injury	Total	Fatal	Injury
Passenger car	29	0	6	31	2	8
Pickup	18	0	4	9	0	0
Semi	1	0	1	1	0	1
Bus	0	0	0	1	0	1
Motorcycle	2	1	1	0	0	0
Van/4 WD	9	0	0	10	0	4
Total	59	1	12	52	2	14

**'Teenagers' and Young Adults in Crashes in Torrance County, 1995-2004**

Year	'Teenagers'				Young Adults			
	All Crashes		Alcohol Crashes		All Crashes		Alcohol Crashes	
	Killed	Injured	Killed	Injured	Killed	Injured	Killed	Injured
2004	1	13	0	0	2	20	0	0
2003	0	37	0	2	0	17	0	3
2002	0	17	0	1	0	12	0	1
2001	2	20	0	0	0	12	0	0
2000	1	23	0	2	1	17	0	4
1999	3	17	0	2	0	19	0	2
1998	0	37	0	2	0	28	0	3
1997	0	43	0	1	2	27	0	3
1996	0	42	0	5	2	22	1	5
1995	2	43	0	1	3	24	0	2