

Aztec Community Report, 2004

Demographics

In 2004, there were 10,869 licensed drivers in Aztec. Of these, there were 5,463 females and 5,406 males. The population of Aztec was 6,906. The total number of crashes in 2004 was 214, yielding a crash rate of 31 per thousand people (total number of crashes 214 divided by total population 6,906 times 1,000). The corresponding rate for the state was 27 per thousand people.

General Crash Information

Since 1995 the number of crashes has shown no consistent pattern. Fatal and injury crashes have also shown no consistent pattern since 1995. Belt usage (as a percentage) has increased from last year, while belt usage in crashes involving visible and incapacitating injuries has decreased. There were no fatalities in the seven intersections with the most crashes in 2004. Of these intersections, five involve Aztec Boulevard.

Alcohol-related Crash Information

Information about alcohol-involved crashes is included in all sections of this report. Of the 84 people convicted of DWI in Aztec, 49 percent were first-time DWI convictions (number of first convictions 41 divided by the total number of people convicted 84 times 100). The corresponding percent for the state is 62.

Crash Specifics

Crashes involving other vehicles were the most common class, accounting for 73 percent of all crashes. Passenger cars were the vehicle type most often involved in crashes, accounting for 39 percent of all vehicles in crashes. Pickups accounted for 36 percent of vehicles involved in crashes. Together these two vehicle types comprised 72 percent of the vehicles involved in injury crashes. The three most common top contributing factors were following too close, failing to yield, and driver inattention. There were no fatal crashes in 2004.

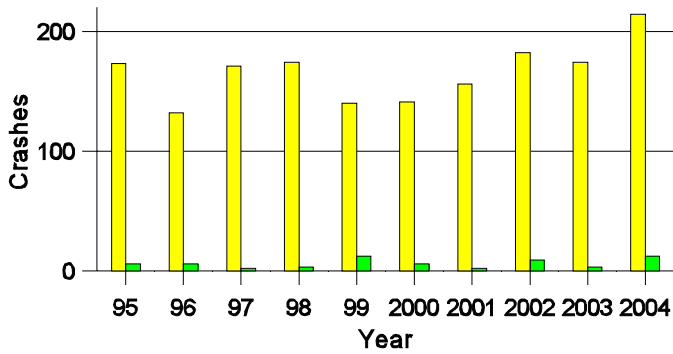
People in Crashes

Overall, males were 55 percent of drivers in crashes, although they account for only 50 percent of licensed drivers in Aztec. Three pedestrians were involved in crashes this year. In 2004, no 'teenagers' or young adults were killed in crashes in Aztec. Statewide 18 percent of alcohol-involved drivers were under 21; in Aztec none were under 21.

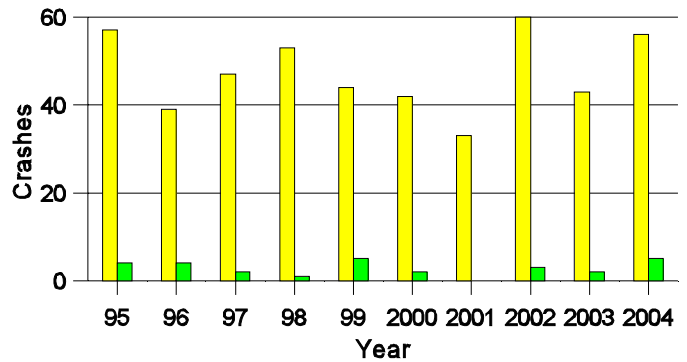
Note: The 1999 crash file contains 15% fewer crashes than the 1998 file. This may be due to problems implementing the new system after the old system failed, or to under reporting. Care should be used in interpreting differences between 1999 and other years in this report.

- Location of arrest/conviction was determined by police agency/court location, not driver residence.
- Crashes and drivers were counted by the city of occurrence/residence.
- Population was counted according to the Census definition.
The city population data is from the most current 2004 estimates.
- Young adults are people between the ages of 20 and 24.
- 'Teenagers' are people between the ages of 15 and 19.
- Tables only include variable values for which there are data.

**Crashes in Aztec
by Alcohol Involvement**



**Fatal and Injury Crashes in Aztec
by Alcohol Involvement**



All Crashes
 Alcohol-involved Crashes

All Fatal and Injury Crashes
 Alcohol-involved Fatal and Injury Crashes

Passenger Vehicle Seatbelt Usage and Injuries in Aztec, 2002-2004

Injury Level	2004		2003		2002	
	Total	No Belt	Total	No Belt	Total	No Belt
Killed	0	0	0	0	0	0
Incapacitating injury	6	0	5	1	6	0
Visible injury	11	3	9	1	10	1
Complaint of injury	61	1	40	2	54	3
Unhurt	461	1	341	3	343	5
Total	539	5	395	7	413	9

The Seven Intersections in Aztec with the Most Crashes, 2004

Intersection	Crashes			People	
	Total	Fatal	Injury	Killed	Injured
Ash St @ Aztec Blvd	5	0	0	0	0
Aztec Blvd @ Chaco St	9	0	4	0	7
Aztec Blvd @ Light Plant Rd	21	0	6	0	9
Aztec Blvd @ Main Ave	13	0	4	0	6
Aztec Blvd @ Oliver Ave	13	0	3	0	3
Aztec Blvd @ Ruins Rd	9	0	4	0	7
Chaco St @ Main Ave	12	0	1	0	1

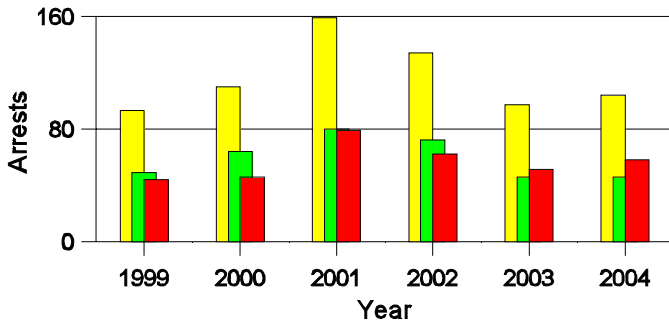
**Lifetime DWI Convictions for Drivers
Convicted of DWI Violations in Aztec, 2004**

Convictions	Since 1999	Since 1980
1st	60	41
2nd	17	20
3rd	7	7
4th	0	7
5th	0	4
6th	0	3
7th	0	1
8th	0	1
9th	0	0
10 or more	0	0
Total	84	84

Convictions are counts of people convicted of DWI by 7/2005 for violations in 2004 in Aztec.
Convictions are not comparable to arrests.

DWI Arrests in Aztec

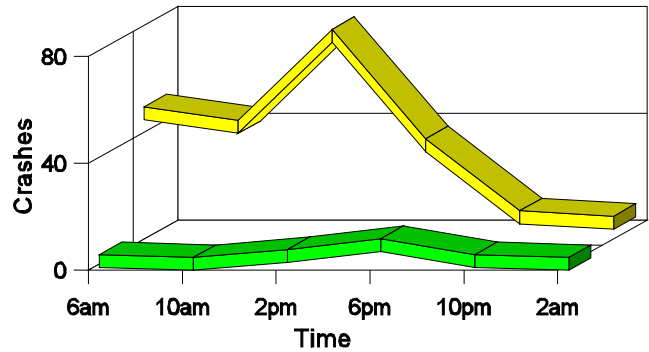
Showing First Arrests and Repeat Offenders



- Total DWI Arrests
- First DWI Arrests
- Repeat DWI Arrests

Crashes in Aztec

by Hour and Alcohol Involvement



- All Crashes
- Alcohol-involved Crashes

Crashes in Aztec by Class, 2004

Class	Crashes					People	
	Total	% of Total	Fatal	% of Fatal	Injury	Killed	Injured
Other vehicle	156	73	0	0	47	0	73
Pedestrian	3	1	0	0	2	0	2
Fixed object	15	7	0	0	2	0	5
Parked vehicle	19	9	0	0	2	0	2
Overturn	5	2	0	0	2	0	2
Other non-collision	2	1	0	0	1	0	1
Animal	13	6	0	0	0	0	0
Other object	1	0	0	0	0	0	0
Total	214	100	0	0	56	0	85

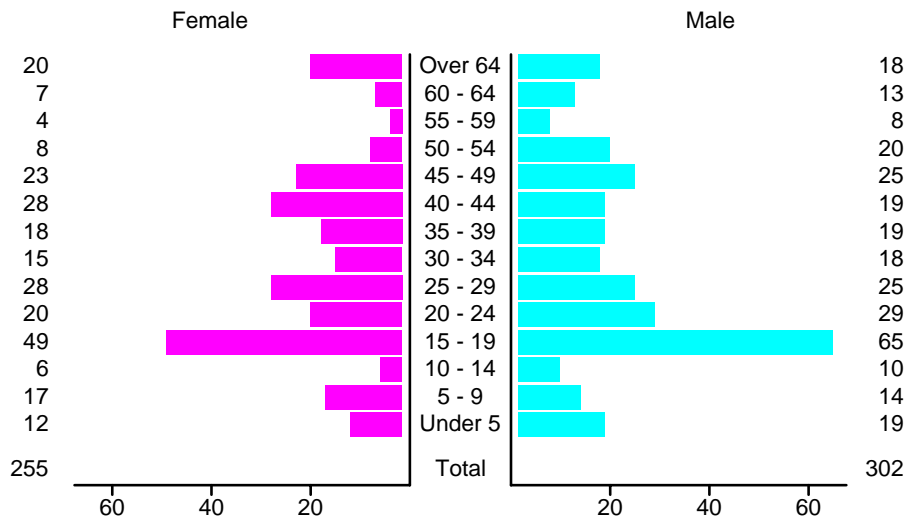
Crashes in Aztec by Vehicle Type, 2004

Vehicle Type	Vehicles					People	
	Total	% of Total	Fatal	% of Fatal	Injury	Killed	Injured
Passenger car	157	39	0	0	44	0	39
Pickup	147	36	0	0	40	0	27
Semi	7	2	0	0	4	0	2
Motorcycle	4	1	0	0	3	0	3
Pedestrian	3	1	0	0	2	0	2
Van/4 WD	79	19	0	0	24	0	12
Other	1	0	0	0	0	0	0
Unknown	9	2	0	0	0	0	0
Total	407	100	0	0	117	0	85

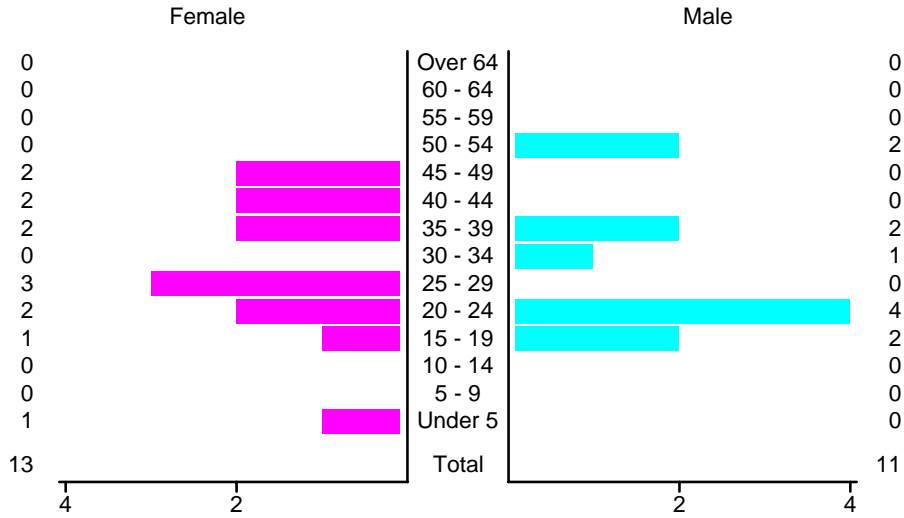
Crashes in Aztec by Top Contributing Factor, 2004

Contributing Factor	Crashes					People	
	Total	% of Total	Fatal	% of Fatal	Injury	Killed	Injured
Alcohol involvement	12	6	0	0	5	0	7
Red light running	8	4	0	0	3	0	8
Failing to yield	53	25	0	0	11	0	19
Excessive speed	12	6	0	0	5	0	10
Driving left of center	1	0	0	0	1	0	1
Following too close	59	28	0	0	22	0	30
Improper turning	3	1	0	0	0	0	0
Improper overtaking	1	0	0	0	0	0	0
Improper backing	17	8	0	0	1	0	1
Mechanical defect	1	0	0	0	1	0	1
Driver inattention	29	14	0	0	5	0	6
Other	18	8	0	0	2	0	2
Total	214	100	0	0	56	0	85

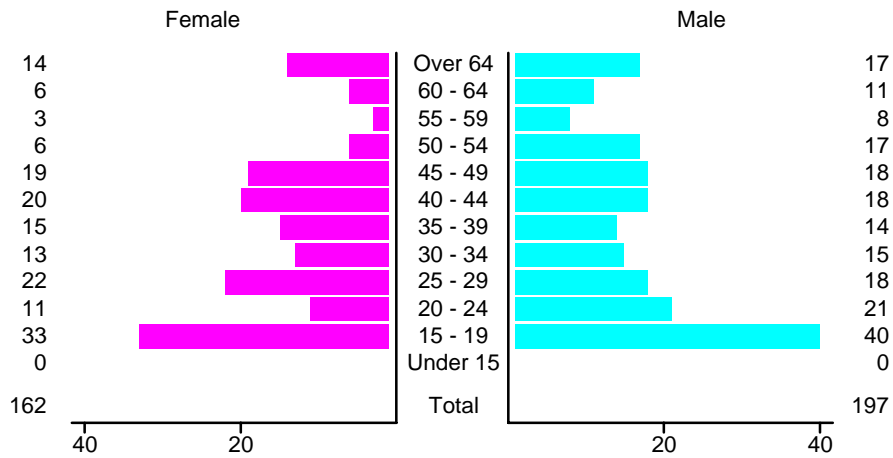
People in Crashes by Age and Sex in Aztec, 2004



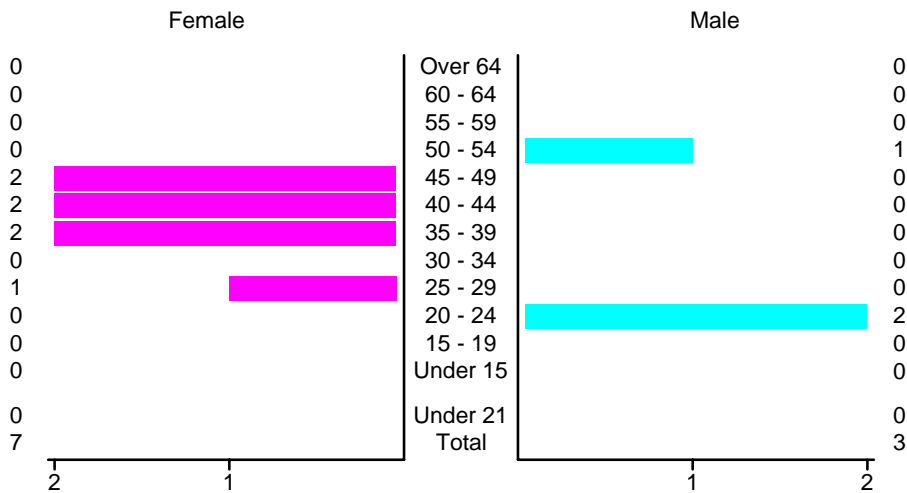
People in Alcohol-Involved Crashes in Aztec, 2004 by Age and Sex



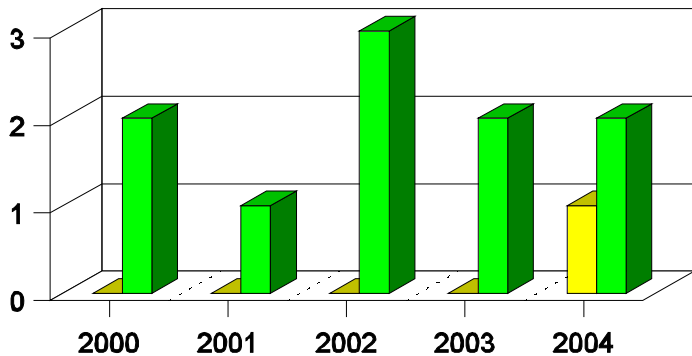
Drivers in Crashes by Age and Sex in Aztec, 2004



Alcohol-Involved Drivers in Crashes in Aztec, 2004 by Age and Sex

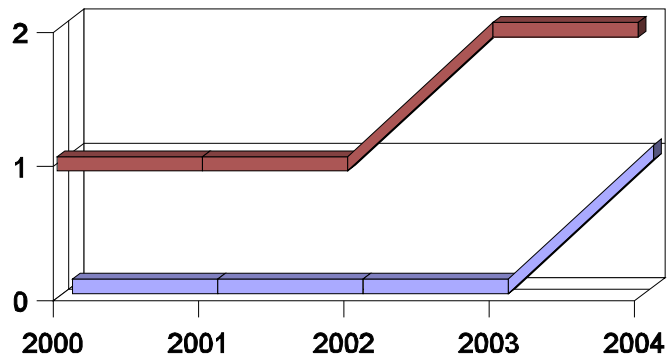


**Pedestrian in Crashes in Aztec
by Pedestrian Alcohol-involvement, 2000-2004**



Alcohol-involved Pedestrians
 Pedestrians Not Alcohol-involved

**Pedestrian in Crashes in Aztec
by Age Group, 2000-2004**



Pedestrians 12 and Younger
 Pedestrians 13 and Older

'Teenagers' and Young Adults in Crashes in Aztec by Vehicle Type, 2004

Vehicle	'Teenage' Drivers			Young Adult Drivers		
	Total	Fatal	Injury	Total	Fatal	Injury
Passenger car	35	0	11	13	0	5
Pickup	26	0	9	11	0	4
Pedestrian	1	0	1	0	0	0
Van/4 WD	12	0	2	8	0	3
Total	74	0	23	32	0	12
Total	55	0	16	28	0	7
Unknown	1	0	0	0	0	0
Total	76	0	23	31	0	16

'Teenagers' and Young Adults Killed and Injured in Crashes by Year in Aztec, 1995-2004

Year	'Teenagers'				Young Adults			
	All Crashes		Alcohol Crashes		All Crashes		Alcohol Crashes	
	Killed	Injured	Killed	Injured	Killed	Injured	Killed	Injured
2004	0	19	0	1	0	6	0	1
2003	0	13	0	3	0	5	0	1
2002	0	20	0	2	0	8	0	0
2001	0	6	0	0	0	3	0	0
2000	0	17	0	1	0	9	0	0
1999	0	12	0	1	0	3	0	1
1998	0	26	0	0	0	9	0	1
1997	0	8	0	1	0	5	0	0
1996	0	17	0	4	0	4	0	0
1995	0	14	0	2	0	1	0	0