

# Bernalillo Community Report, 2004

## Demographics

In 2004, there were 6,195 licensed drivers in Bernalillo. Of these, there were 3,095 females and 3,100 males. The population of Bernalillo was 6,956. The total number of crashes in 2004 was 282, yielding a crash rate of 41 per thousand people (total number of crashes 282 divided by total population 6,956 times 1,000). The corresponding rate for the state was 27 per thousand people.

## General Crash Information

Since 1995 the number of crashes has shown no consistent pattern. Fatal and injury crashes have also shown no consistent pattern since 1995. Belt usage (as a percentage) has increased from last year, while belt usage in crashes involving visible and incapacitating injuries has remained about the same as last year. There were no fatalities in the seven intersections with the most crashes in 2004. Of these intersections, three involve US 550 (formerly NM 44), and three involve Camino del Pueblo.

## Alcohol-related Crash Information

Information about alcohol-involved crashes is included in all sections of this report. Of the 30 people convicted of DWI in Bernalillo, 53 percent were first-time DWI convictions (number of first convictions 16 divided by the total number of people convicted 30 times 100). The corresponding percent for the state is 62.

## Crash Specifics

Crashes involving other vehicles were the most common class, accounting for 83 percent of all crashes. A crash involving a pedestrian resulted in a fatality. Passenger cars were the vehicle type most often involved in crashes, accounting for 48 percent of all vehicles in crashes. Pickups accounted for 27 percent of vehicles involved in crashes. Together these two vehicle types comprised 76 percent of the vehicles involved in injury crashes. The three most common top contributing factors were following too close, failing to yield, and driver inattention. The top contributing factor in the fatal crash was alcohol involvement.

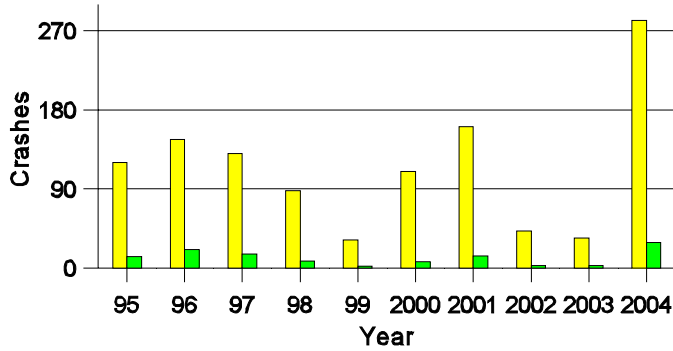
## People in Crashes

Overall, males were 56 percent of drivers in crashes, although they account for only 50 percent of licensed drivers in Bernalillo. There were two pedestrians involved in crashes this year. In 2004, no 'teenagers' or young adults were killed in crashes in Bernalillo. Statewide 18 percent of alcohol-involved drivers were under 21; in Bernalillo 26 percent were under 21.

**Note:** The 1999 crash file contains 15% fewer crashes than the 1998 file. This may be due to problems implementing the new system after the old system failed, or to under reporting. Care should be used in interpreting differences between 1999 and other years in this report.

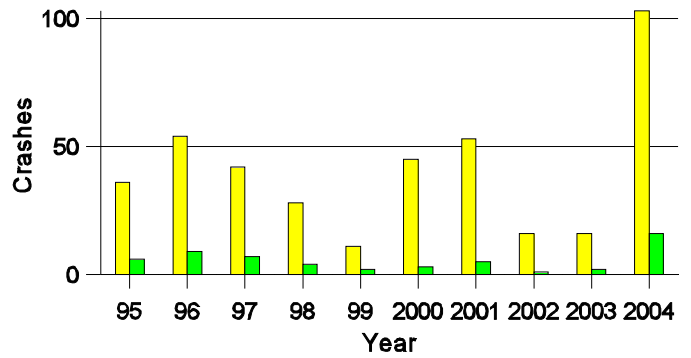
- Location of arrest/conviction was determined by police agency/court location, not driver residence.
- Crashes and drivers were counted by the city of occurrence/residence.
- Population was counted according to the Census definition.  
The city population data is from the most current 2004 estimates.
- Young adults are people between the ages of 20 and 24.
- 'Teenagers' are people between the ages of 15 and 19.
- Tables only include variable values for which there are data.
- Crashes may have been underreported in some years previous to 2004.

### Crashes in Bernalillo by Alcohol Involvement



■ All Crashes  
■ Alcohol-involved Crashes

### Fatal and Injury Crashes in Bernalillo by Alcohol Involvement



■ All Fatal and Injury Crashes  
■ Alcohol-involved Fatal and Injury Crashes

### Passenger Vehicle Seatbelt Usage and Injuries in Bernalillo, 2002-2004

Injury Level	2004		2003		2002	
	Total	No Belt	Total	No Belt	Total	No Belt
Killed	0	0	1	1	1	1
Incapacitating injury	12	2	3	0	5	0
Visible injury	28	3	5	1	3	0
Complaint of injury	87	2	13	1	8	0
Unhurt	577	1	56	1	65	0
<b>Total</b>	<b>704</b>	<b>8</b>	<b>78</b>	<b>4</b>	<b>82</b>	<b>1</b>

### The Seven Intersections in Bernalillo with the Most Crashes, 2004

Intersection	Crashes			People	
	Total	Fatal	Injury	Killed	Injured
Avenida Bernalillo @ Camino Del Pueblo	5	0	5	0	5
Avenida Bernalillo @ Hill Rd	5	0	1	0	1
Calle Del Norte @ Calle Don Tomas	4	0	0	0	0
Calle Don Tomas @ US 550	11	0	5	0	9
Camino Del Pueblo @ Lucero Ave	3	0	1	0	3
Camino Del Pueblo @ US 550	35	0	15	0	19
Hill Rd @ US 550	10	0	3	0	3

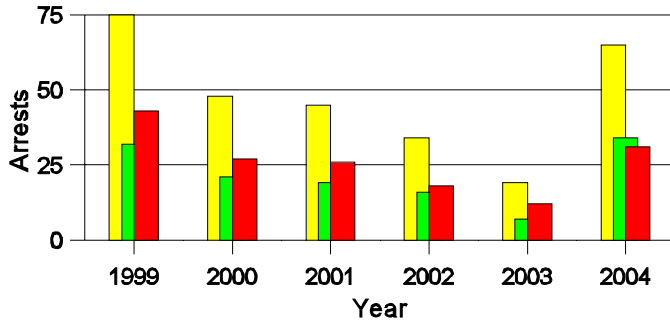
**Lifetime DWI Convictions for Drivers  
Convicted of DWI Violations in Bernalillo, 2004**

Convictions	Since 1999	Since 1980
1st	24	16
2nd	3	8
3rd	3	3
4th	0	0
5th	0	2
6th	0	0
7th	0	1
8th	0	0
9th	0	0
10 or more	0	0
<b>Total</b>	<b>30</b>	<b>30</b>

Convictions are counts of people convicted of DWI by 7/2005 for violations in 2004 in Bernalillo.  
Convictions are not comparable to arrests.

**DWI Arrests in Bernalillo**

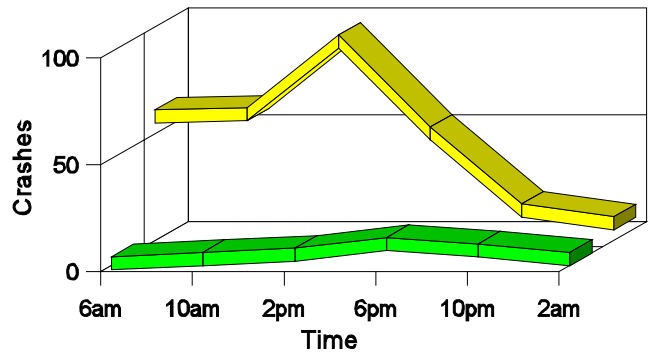
Showing First Arrests and Repeat Offenders



■ Total DWI Arrests  
■ First DWI Arrests  
■ Repeat DWI Arrests

**Crashes in Bernalillo**

by Hour and Alcohol Involvement



■ All Crashes  
■ Alcohol-involved Crashes

**Crashes in Bernalillo by Class, 2004**

Class	Crashes				People		
	Total	% of Total	Fatal	% of Fatal	Injury	Killed	Injured
Other vehicle	233	83	0	0	86	0	118
Pedestrian	2	1	1	100	1	1	1
Fixed object	21	7	0	0	5	0	7
Parked vehicle	6	2	0	0	2	0	2
Overturn	8	3	0	0	7	0	8
Other non-collision	5	2	0	0	0	0	0
Pedalcyclist	1	0	0	0	0	0	0
Animal	1	0	0	0	0	0	0
Other object	5	2	0	0	1	0	1
<b>Total</b>	<b>282</b>	<b>100</b>	<b>1</b>	<b>100</b>	<b>102</b>	<b>1</b>	<b>137</b>

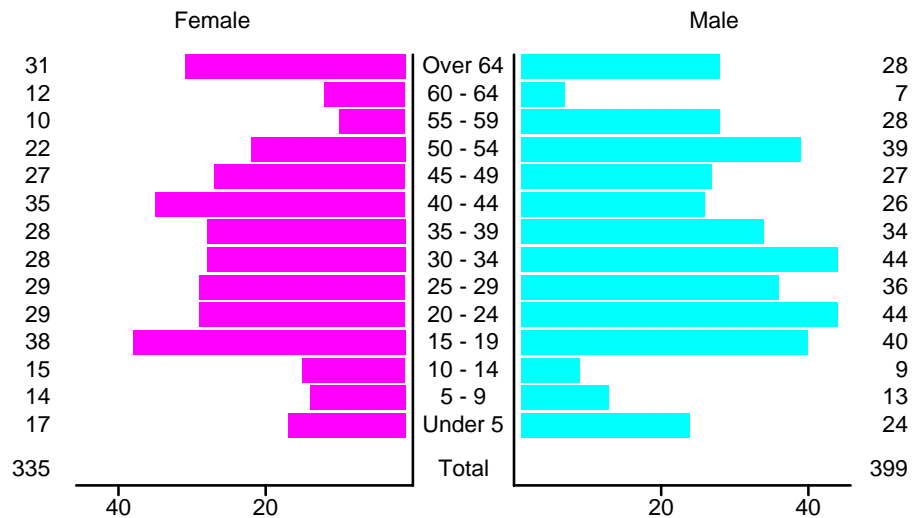
### Crashes in Bernalillo by Vehicle Type, 2004

Vehicle Type	Vehicles					People	
	Total	% of Total	Fatal	% of Fatal	Injury	Killed	Injured
Passenger car	260	48	0	0	89	0	73
Pickup	149	27	2	67	66	0	37
Semi	24	4	0	0	4	0	1
Bus	1	0	0	0	0	0	0
Motorcycle	5	1	0	0	5	0	6
Pedalcyclist	1	0	0	0	0	0	0
Pedestrian	2	0	1	33	1	1	1
Van/4 WD	90	16	0	0	40	0	19
Other	3	1	0	0	0	0	0
Unknown	11	2	0	0	0	0	0
<b>Total</b>	<b>546</b>	<b>100</b>	<b>3</b>	<b>100</b>	<b>205</b>	<b>1</b>	<b>137</b>

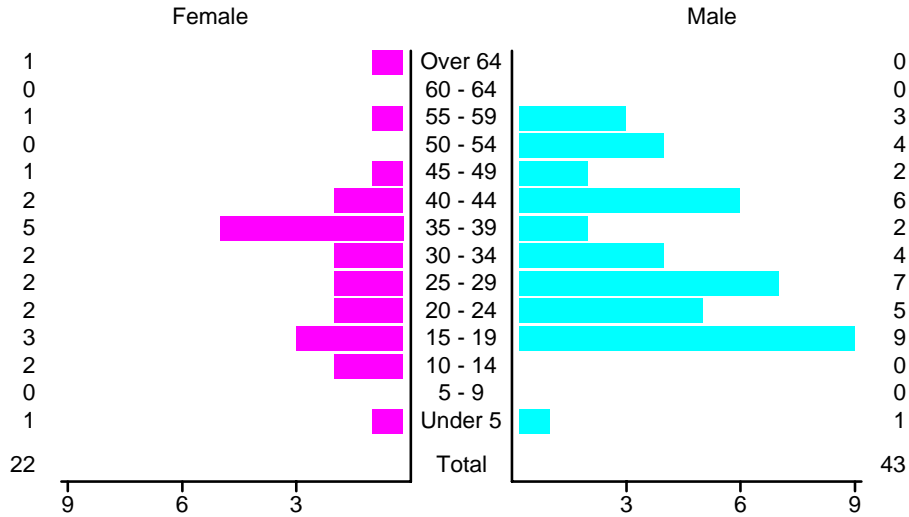
### Crashes in Bernalillo by Top Contributing Factor, 2004

Contributing Factor	Crashes					People	
	Total	% of Total	Fatal	% of Fatal	Injury	Killed	Injured
Alcohol involvement	29	10	1	100	15	1	23
Red light running	12	4	0	0	7	0	8
Failing to yield	43	15	0	0	12	0	14
Excessive speed	20	7	0	0	8	0	12
Driving left of center	5	2	0	0	1	0	1
Following too close	94	33	0	0	38	0	47
Improper turning	21	7	0	0	4	0	5
Improper overtaking	2	1	0	0	1	0	2
Improper backing	4	1	0	0	0	0	0
Mechanical defect	1	0	0	0	0	0	0
Driver inattention	37	13	0	0	13	0	22
Other	14	5	0	0	3	0	3
<b>Total</b>	<b>282</b>	<b>100</b>	<b>1</b>	<b>100</b>	<b>102</b>	<b>1</b>	<b>137</b>

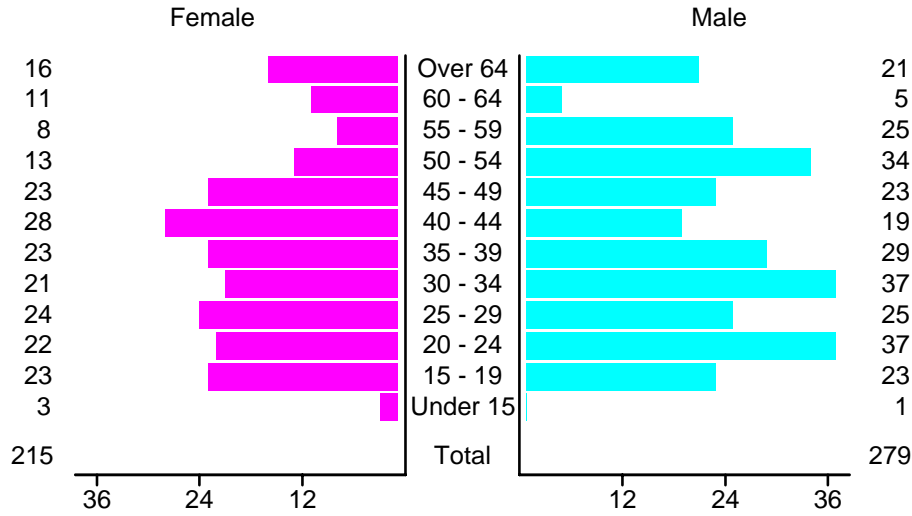
### People in Crashes by Age and Sex in Bernalillo, 2004



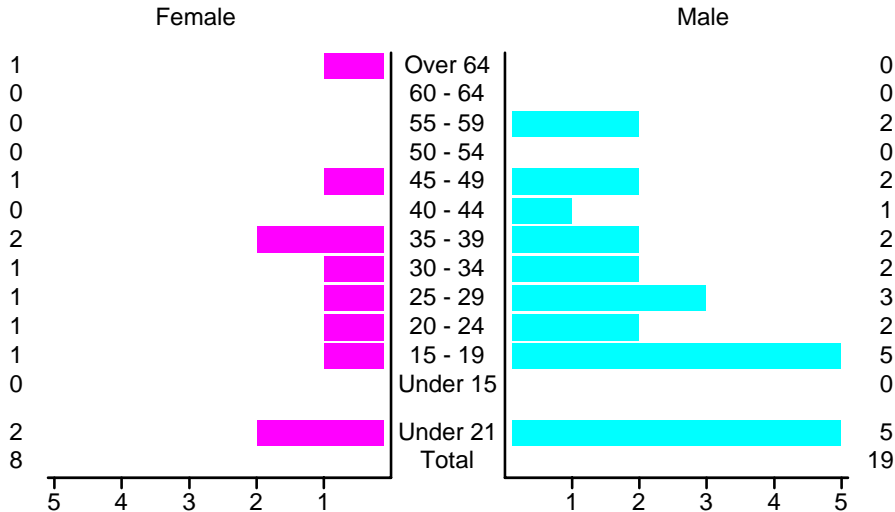
### People in Alcohol-Involved Crashes in Bernalillo, 2004 by Age and Sex



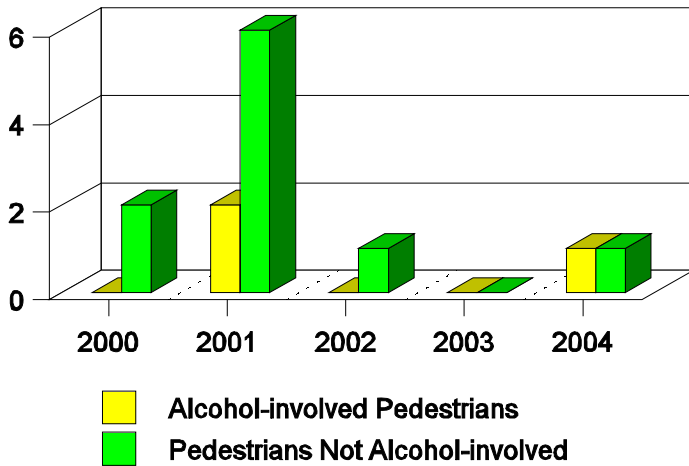
### Drivers in Crashes by Age and Sex in Bernalillo, 2004



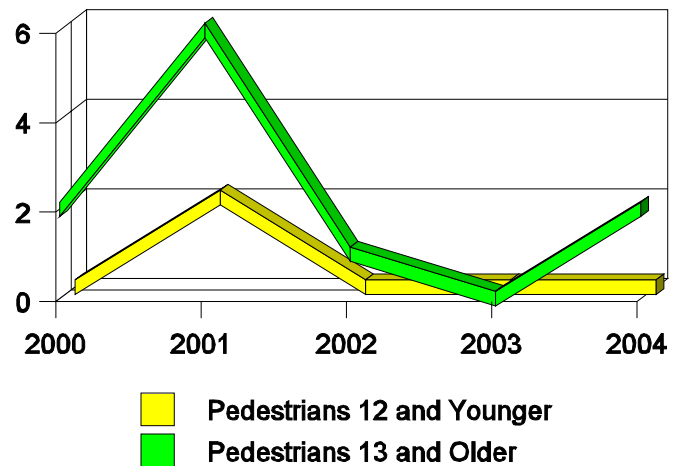
### Alcohol-Involved Drivers in Crashes in Bernalillo, 2004 by Age and Sex



**Pedestrian in Crashes in Bernalillo**  
by Pedestrian Alcohol-involvement, 2000-2004



**Pedestrian in Crashes in Bernalillo**  
by Age Group, 2000-2004



**'Teenagers' and Young Adults in Crashes in Bernalillo by Vehicle Type, 2004**

Vehicle	'Teenage' Drivers			Young Adult Drivers		
	Total	Fatal	Injury	Total	Fatal	Injury
Passenger car	27	0	11	36	0	10
Pickup	12	0	8	14	1	9
Semi	0	0	0	2	0	0
Motorcycle	1	0	1	0	0	0
Van/4 WD	6	0	1	6	0	3
Unknown	0	0	0	2	0	0
<b>Total</b>	<b>46</b>	<b>0</b>	<b>21</b>	<b>60</b>	<b>1</b>	<b>22</b>

**'Teenagers' and Young Adults Killed and Injured in Crashes by Year in Bernalillo, 1995-2004**

Year	'Teenagers'				Young Adults			
	All Crashes		Alcohol Crashes		All Crashes		Alcohol Crashes	
	Killed	Injured	Killed	Injured	Killed	Injured	Killed	Injured
2004	0	13	0	4	0	11	0	1
2003	0	0	0	0	0	3	0	1
2002	0	5	0	0	1	5	1	0
2001	0	22	0	1	0	5	0	0
2000	1	15	0	1	0	9	0	0
1999	0	1	0	1	1	1	0	0
1998	0	6	0	1	0	7	0	1
1997	0	12	0	0	0	4	0	2
1996	0	17	0	2	0	14	0	4
1995	0	13	0	1	0	8	0	1