

Isleta Pueblo Community Report, 2004

Demographics

In 2004, there were 1,592 licensed drivers in Isleta Pueblo. Of these, there were 802 females and 790 males. The total number of crashes in 2004 was 145, yielding a crash rate of 91 per thousand licensed drivers (total number of crashes 145 divided by total licensed drivers 1,592 times 1,000). The corresponding rate for the state was 51 per thousand licensed drivers.

General Crash Information

Since 1995 the number of crashes has shown no consistent pattern. Fatal and injury crashes have also shown no consistent pattern since 1995. Belt usage (as a percentage) has increased from last year, while belt usage in crashes involving visible and incapacitating injuries has also increased.

Alcohol-related Crash Information

Information about alcohol-involved crashes is included in all sections of this report. Of the 35 people convicted of DWI in Isleta Pueblo, 60 percent were first-time DWI convictions (number of first convictions 21 divided by the total number of people convicted 35 times 100). The corresponding percent for the state is 62.

Crash Specifics

Crashes involving other vehicles were the most common class, accounting for 51 percent of all crashes. Crashes involving overturns and an other vehicle resulted in fatalities. Passenger cars were the vehicle type most often involved in crashes, accounting for 45 percent of all vehicles in crashes. Pickups accounted for 36 percent of vehicles involved in crashes. Together these two vehicle types comprised 83 percent of the vehicles involved in injury crashes. The three most common top contributing factors were excessive speed, driver inattention, and alcohol involvement. There were three fatal crashes in 2004. The most common top contributing factor for the fatal crashes was alcohol involvement.

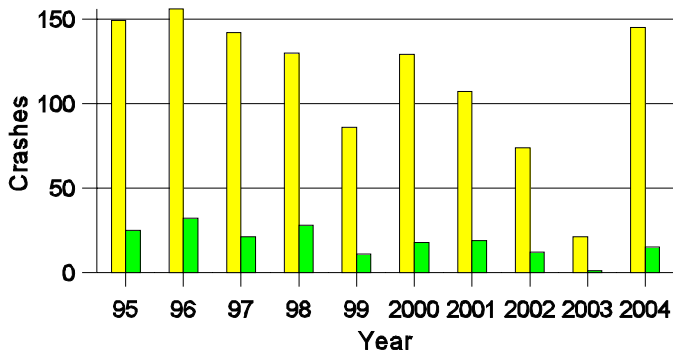
People in Crashes

Overall, males were 57 percent of drivers in crashes, although they account for only 50 percent of licensed drivers in Isleta Pueblo. There were no pedestrians involved in crashes. In 2004, no 'teenagers' and two young adults were killed in crashes in Isleta Pueblo. Statewide 18 percent of alcohol-involved drivers were under 21; in Isleta Pueblo seven percent were under 21.

Note: The 1999 crash file contains 15% fewer crashes than the 1998 file. This may be due to problems implementing the new system after the old system failed, or to under reporting. Care should be used in interpreting differences between 1999 and other years in this report.

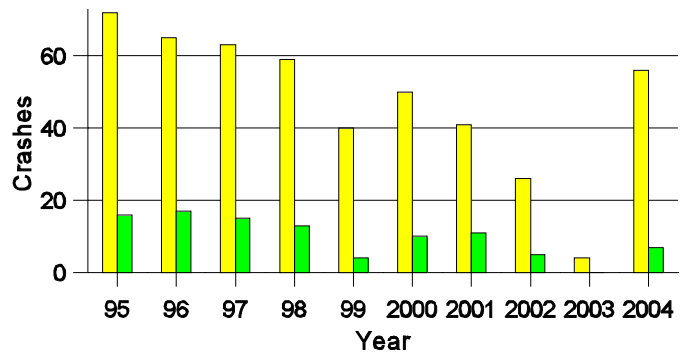
- Location of arrest/conviction was determined by police agency/court location, not driver residence.
- Crashes and drivers were counted by the city of occurrence/residence.
- Young adults are people between the ages of 20 and 24.
- 'Teenagers' are people between the ages of 15 and 19.
- Tables only include variable values for which there are data.

Crashes in Isleta Pueblo by Alcohol Involvement



■ All Crashes
■ Alcohol-involved Crashes

Fatal and Injury Crashes in Isleta Pueblo by Alcohol Involvement



■ All Fatal and Injury Crashes
■ Alcohol-involved Fatal and Injury Crashes

Passenger Vehicle Seatbelt Usage and Injuries in Isleta, 2002-2004

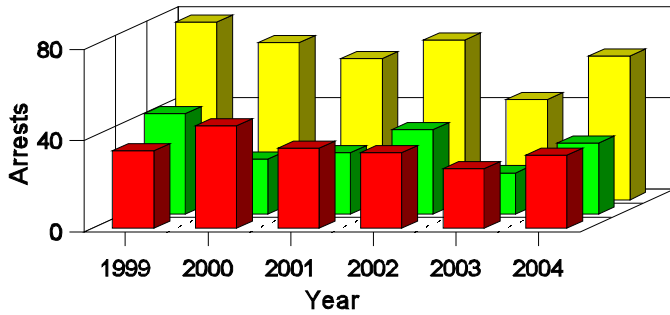
Injury Level	2004		2003		2002	
	Total	No Belt	Total	No Belt	Total	No Belt
Killed	3	2	1	1	0	0
Incapacitating injury	10	0	3	1	5	0
Visible injury	17	1	2	0	8	0
Complaint of injury	39	2	2	0	14	0
Unhurt	219	2	35	0	135	0
Total	288	7	43	2	162	0

Lifetime DWI Convictions for Drivers Convicted of DWI Violations in Isleta, 2004

Convictions	Since 1999	Since 1980
1st	26	21
2nd	7	6
3rd	1	3
4th	1	1
5th	0	0
6th	0	1
7th	0	1
8th	0	1
9th	0	1
10 or more	0	0
Total	35	35

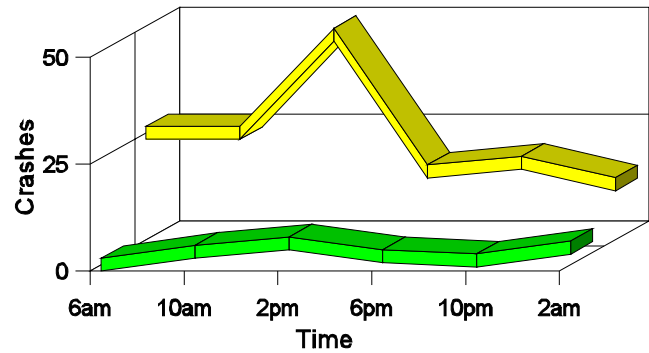
Convictions are counts of people convicted of DWI by 7/2005 for violations in 2004 in Isleta.
 Convictions are not comparable to arrests.

DWI Arrests in Isleta Pueblo
Showing First Arrests and Repeat Offenders



- Total DWI Arrests
- First DWI Arrests
- Repeat DWI Arrests

Crashes in Isleta Pueblo
by Hour and Alcohol Involvement



- All Crashes
- Alcohol-involved Crashes

Crashes in Isleta by Class, 2004

Class	Crashes				People		
	Total	% of Total	Fatal	% of Fatal	Injury	Killed	Injured
Other vehicle	74	51	1	33	29	1	40
Fixed object	40	28	0	0	8	0	8
Parked vehicle	1	1	0	0	0	0	0
Overturn	20	14	2	67	14	2	20
Other non-collision	4	3	0	0	1	0	1
Animal	3	2	0	0	0	0	0
Other object	3	2	0	0	1	0	1
Total	145	100	3	100	53	3	70

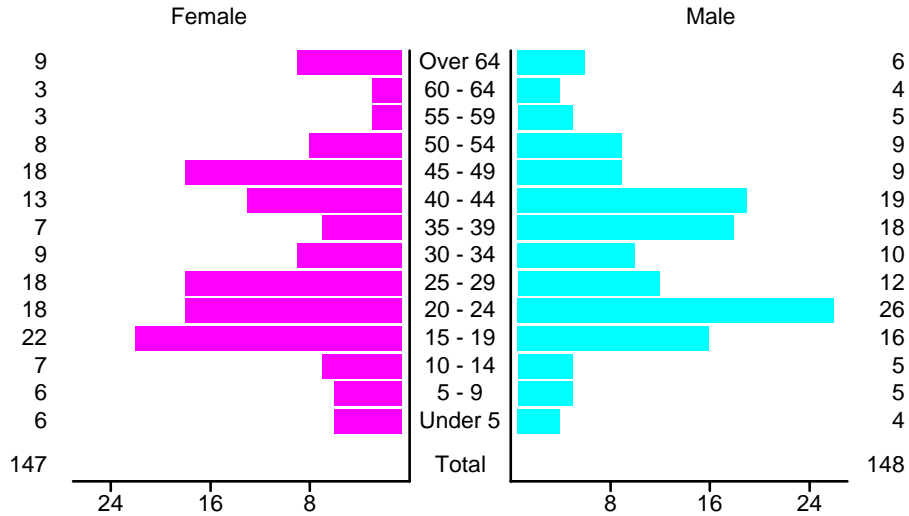
Crashes in Isleta by Vehicle Type, 2004

Vehicle Type	Vehicles				People		
	Total	% of Total	Fatal	% of Fatal	Injury	Killed	Injured
Passenger car	100	45	1	25	32	1	30
Pickup	80	36	1	25	38	1	27
Semi	3	1	0	0	0	0	0
Motorcycle	4	2	0	0	3	0	3
Van/4 WD	28	13	2	50	10	1	10
Unknown	8	4	0	0	1	0	0
Total	223	100	4	100	84	3	70

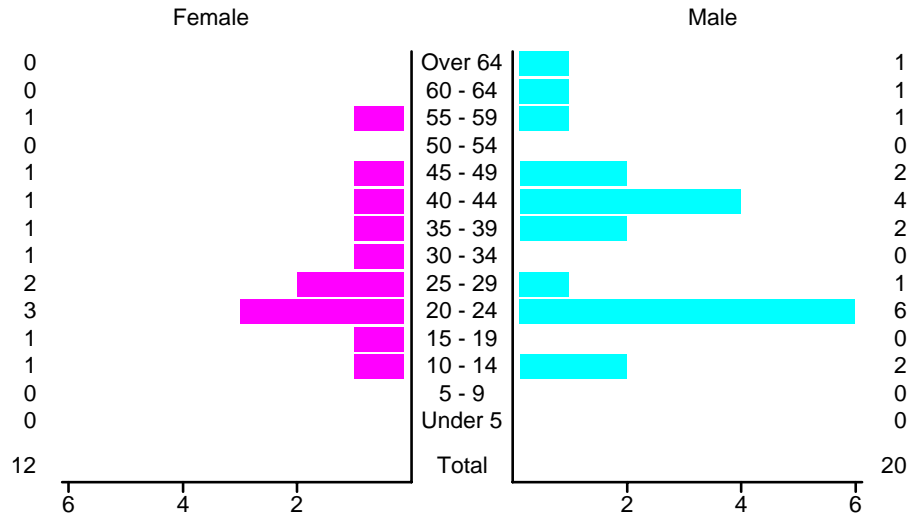
Crashes in Isleta by Top Contributing Factor, 2004

Contributing Factor	Crashes				People		
	Total	% of Total	Fatal	% of Fatal	Injury	Killed	Injured
Alcohol involvement	15	10	2	67	5	2	7
Red light running	1	1	0	0	1	0	1
Failing to yield	12	8	1	33	4	1	9
Excessive speed	36	25	0	0	18	0	22
Driving left of center	5	3	0	0	2	0	4
Following too close	12	8	0	0	4	0	4
Improper turning	1	1	0	0	1	0	1
Improper backing	3	2	0	0	0	0	0
Mechanical defect	5	3	0	0	2	0	3
Driver inattention	36	25	0	0	13	0	15
Other	19	13	0	0	3	0	4
Total	145	100	3	100	53	3	70

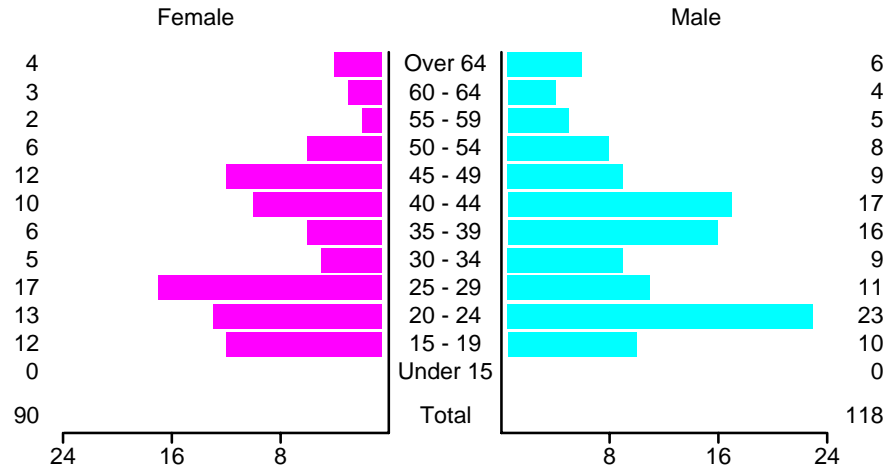
People in Crashes by Age and Sex in Isleta Pueblo, 2004



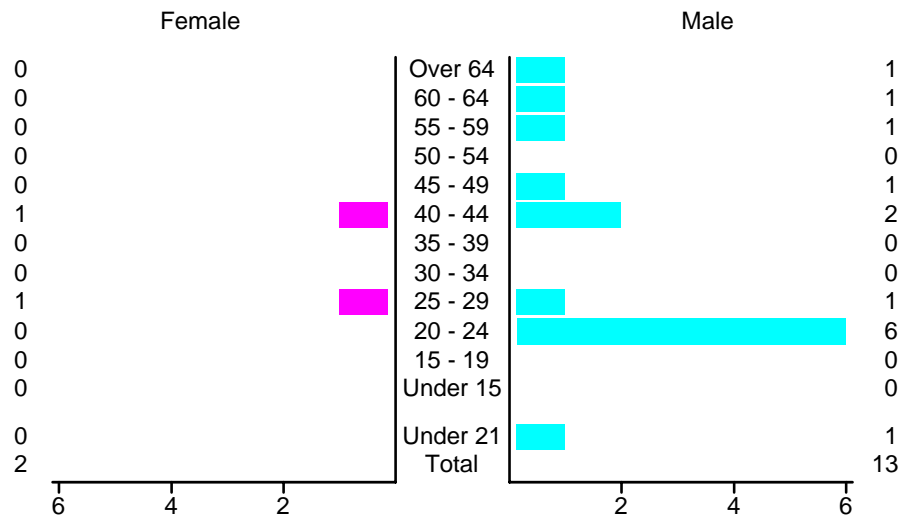
People in Alcohol-Involved Crashes in Isleta Pueblo, 2004 by Age and Sex



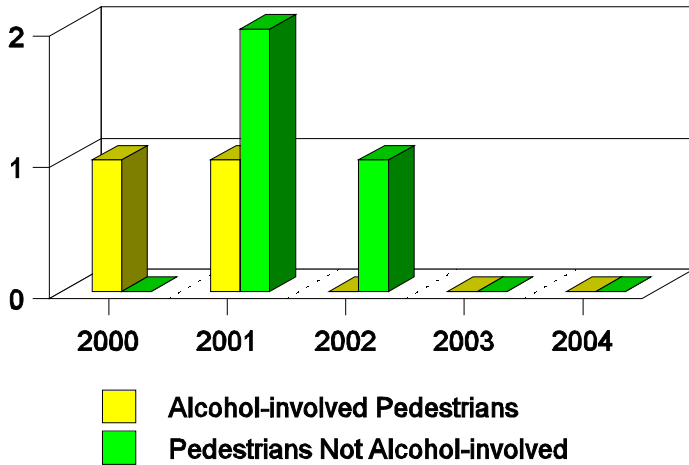
Drivers in Crashes by Age and Sex in Isleta Pueblo, 2004



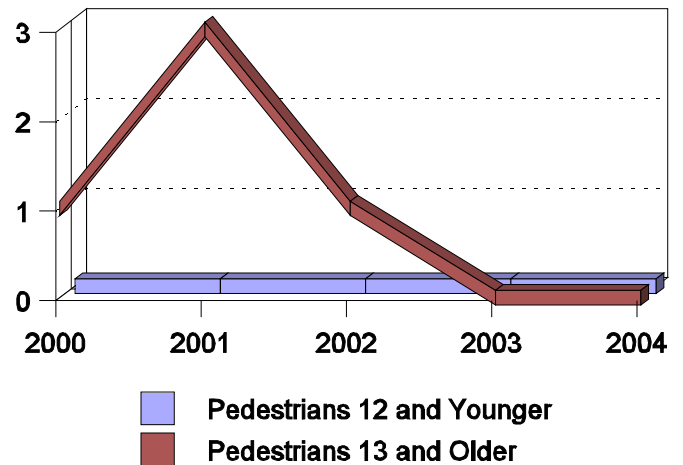
Alcohol-Involved Drivers in Crashes in Isleta Pueblo, 2004 by Age and Sex



**Pedestrian in Crashes in Isleta
by Pedestrian Alcohol-involvement, 2000-2004**



**Pedestrian in Crashes in Isleta
by Age Group, 2000-2004**



'Teenagers' and Young Adults in Crashes in Isleta by Vehicle Type, 2004

Vehicle	'Teenage' Drivers			Young Adult Drivers		
	Total	Fatal	Injury	Total	Fatal	Injury
Passenger car	13	0	4	19	1	4
Pickup	6	0	4	12	0	5
Van/4 WD	3	0	1	4	1	2
Unknown	0	0	0	1	0	0
Total	22	0	9	36	2	11

'Teenagers' and Young Adults Killed and Injured in Crashes by Year in Isleta, 1995-2004

Year	'Teenagers'				Young Adults			
	All Crashes		Alcohol Crashes		All Crashes		Alcohol Crashes	
	Killed	Injured	Killed	Injured	Killed	Injured	Killed	Injured
2004	0	9	0	0	2	8	2	1
2003	0	0	0	0	0	4	0	0
2002	0	0	0	0	0	7	0	2
2001	0	9	0	1	0	10	0	1
2000	1	13	0	2	0	8	0	0
1999	0	9	0	0	0	9	0	1
1998	0	15	0	4	0	12	0	2
1997	1	11	0	5	1	14	1	5
1996	1	15	0	5	0	16	0	5
1995	0	15	0	5	0	17	0	8