

Los Alamos Community Report, 2004

Los Alamos is a combined city/county. Therefore, since 1997 the city and county reports are combined into one. Figures and numbers for this report do not correspond to previous years.

Demographics

In 2004, there were 15,720 licensed drivers in Los Alamos. Of these, there were 7,585 females and 8,135 males. The population in Los Alamos was 18,796. The total number of crashes in 2004 was 259, yielding a crash rate of 14 per thousand people (the total number of crashes 259 divided by the population 18,796 multiplied by 1,000). The corresponding rate for the state was 27 per thousand people.

General Crash Information

Since 1995 the number of crashes has shown no consistent pattern. Fatal and injury crashes have also shown no consistent pattern since 1995. Belt usage (as a percentage) has remained about the same as last year. For the past two years, all people with visible or incapacitating crash injuries reported wearing their seatbelts. There were no fatalities in the seven intersections with the most crashes in 2004. Of these intersections, six involve Diamond Drive.

Alcohol-related Crash Information

Information about alcohol-involved crashes is included in all sections of this report. Of the 27 people convicted of DWI in Los Alamos in 2004, 63 percent were first-time DWI convictions (number of first convictions 17 divided by the total number of people convicted 27 multiplied by 100). The corresponding percentage for the state was 62.

Crash Specifics

Crashes involving other vehicles were the most common class, accounting for 63 percent of all crashes. Passenger cars were the vehicle type most often involved in crashes, accounting for 51 percent of all vehicles in crashes. Van/4 WD accounted for 22 percent of vehicles involved in crashes. Together these two vehicle types comprised 71 percent of the vehicles involved in injury crashes. The three most common top contributing factors were following too close, driver inattention, and failing to yield. There were no fatal crashes in 2004.

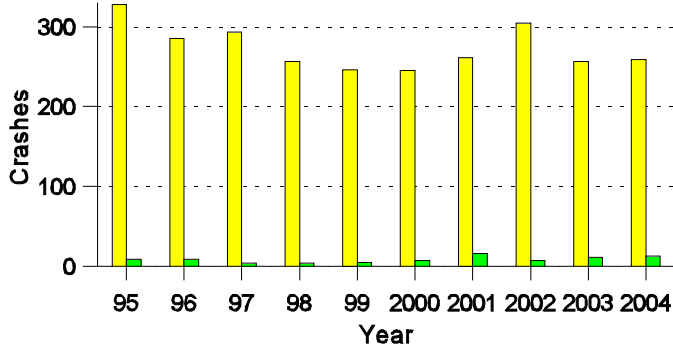
People in Crashes

Overall, males were 60 percent of drivers in crashes, although they account for only 52 percent of licensed drivers in Los Alamos. There were four pedestrians in crashes. No 'teenagers' or young adults were killed in crashes in 2004. Statewide 18 percent of alcohol-involved drivers were under 21; in Los Alamos 54 percent were under 21.

Note: The 1999 crash file contains 15% fewer crashes than the 1998 file. This may be due to problems implementing the new system after the old system failed, or to under reporting. Care should be used in interpreting differences between 1999 and other years in this report.

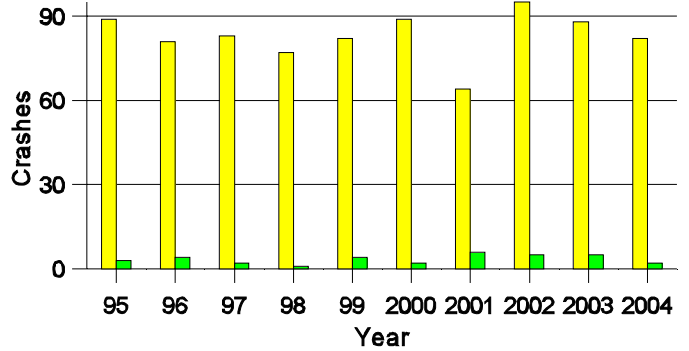
- Location of arrest/conviction was determined by police agency/court location, not driver residence.
- Crashes and drivers were counted by the city of occurrence/residence.
- Population was counted according to the Census definition. The city population data is from the most current 2004 estimates.
- Young adults are people between the ages of 20 and 24.
- 'Teenagers' are people between the ages of 15 and 19.
- Tables only include variable values for which there are data.

**Crashes in Los Alamos
by Alcohol Involvement**



■ All Crashes
■ Alcohol-involved Crashes

**Fatal and Injury Crashes in Los Alamos
by Alcohol Involvement**



■ All Fatal and Injury Crashes
■ Alcohol-involved Fatal and Injury Crashes

Passenger Vehicle Seatbelt Usage and Injuries in Los Alamos, 2002-2004

Injury Level	2004		2003		2002	
	Total	No Belt	Total	No Belt	Total	No Belt
Killed	0	0	0	0	0	0
Incapacitating injury	7	0	8	0	5	0
Visible injury	17	0	16	0	33	5
Complaint of injury	60	0	68	0	59	0
Unhurt	488	3	432	3	567	7
Total	572	3	524	3	664	12

The Seven Intersections in Los Alamos with the Most Crashes, 2004

Intersection	Crashes			People	
	Total	Fatal	Injury	Killed	Injured
15th St @ Trinity Dr	5	0	0	0	0
Arkansas Ave @ Diamond Dr	8	0	2	0	5
Canyon Rd @ Diamond Dr	9	0	3	0	5
Club Rd @ Diamond Dr	5	0	0	0	0
Diamond Dr @ Orange St	7	0	2	0	2
Diamond Dr @ Trinity Dr	9	0	1	0	1
Diamond Dr @ West Jemez Rd	16	0	6	0	6

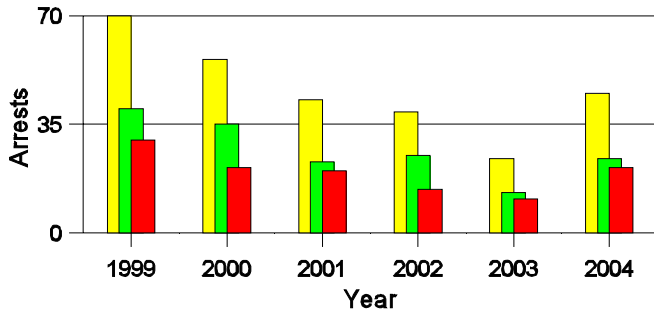
**Lifetime DWI Convictions for Drivers
Convicted of DWI Violations in Los Alamos, 2004**

Convictions	Since 1999	Since 1980
1st	22	17
2nd	4	7
3rd	1	2
4th	0	0
5th	0	1
6th	0	0
7th	0	0
8th	0	0
9th	0	0
10 or more	0	0
Total	27	27

Convictions are counts of people convicted of DWI by 7/2005 for violations in 2004 in Los Alamos.
Convictions are not comparable to arrests.

DWI Arrests in Los Alamos

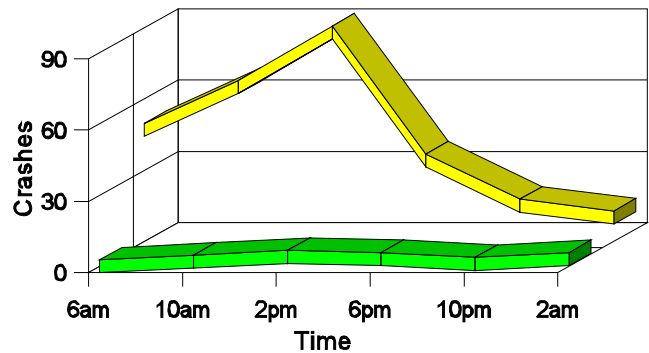
Showing First Arrests and Repeat Offenders



■ Total DWI Arrests
■ First DWI Arrests
■ Repeat DWI Arrests

Crashes in Los Alamos

by Hour and Alcohol Involvement



■ All Crashes
■ Alcohol-involved Crashes

Crashes in Los Alamos by Class, 2004

Class	Crashes					People	
	Total	% of Total	Fatal	% of Fatal	Injury	Killed	Injured
Other vehicle	162	63	0	0	52	0	69
Pedestrian	4	2	0	0	4	0	4
Fixed object	34	13	0	0	7	0	9
Parked vehicle	29	11	0	0	1	0	1
Overturn	9	3	0	0	8	0	11
Other non-collision	4	2	0	0	4	0	4
Pedalcyclist	5	2	0	0	5	0	5
Animal	9	3	0	0	0	0	0
Other object	3	1	0	0	1	0	1
Total	259	100	0	0	82	0	104

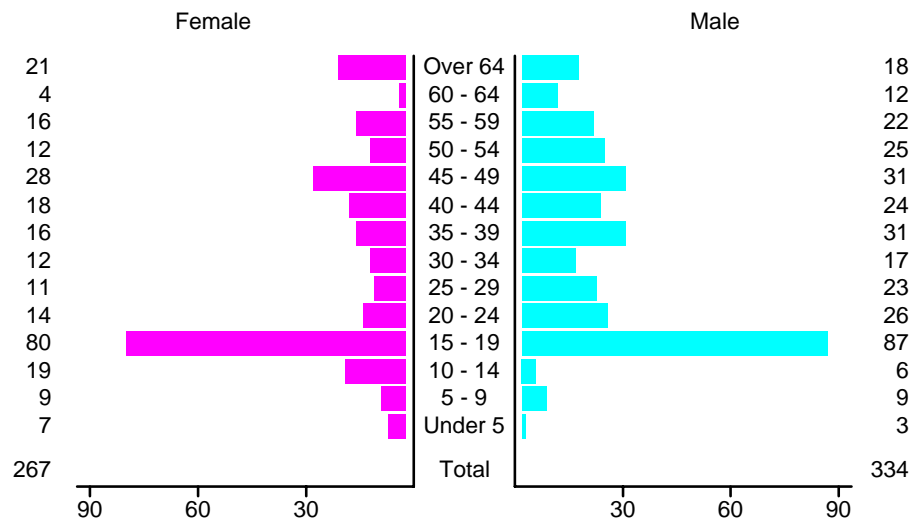
Crashes in Los Alamos by Vehicle Type, 2004

Vehicle Type	Vehicles				People		
	Total	% of Total	Fatal	% of Fatal	Injury	Killed	Injured
Passenger car	250	51	0	0	84	0	55
Pickup	96	20	0	0	27	0	11
Semi	12	2	0	0	1	0	0
Motorcycle	8	2	0	0	7	0	8
Pedalcyclist	6	1	0	0	6	0	6
Pedestrian	4	1	0	0	4	0	4
Van/4 WD	106	22	0	0	33	0	20
Other	1	0	0	0	0	0	0
Unknown	8	2	0	0	3	0	0
Total	491	100	0	0	165	0	104

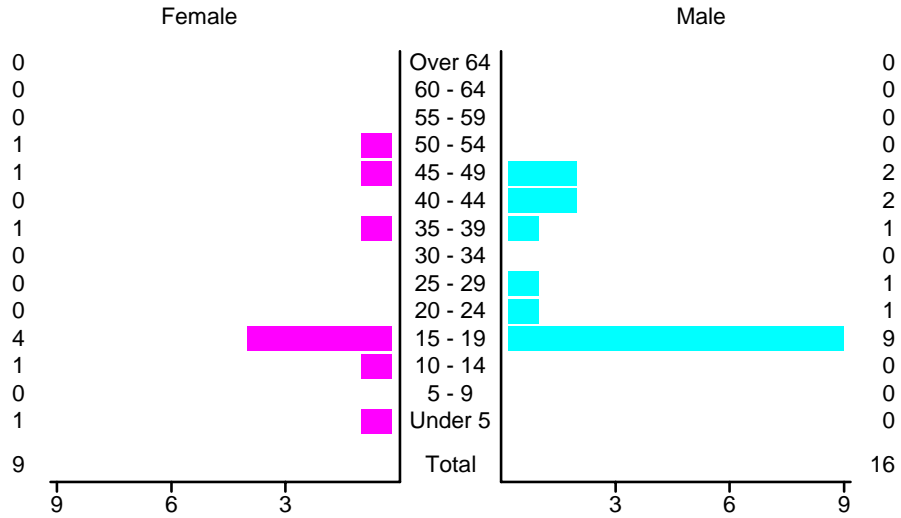
Crashes in Los Alamos by Top Contributing Factor, 2004

Contributing Factor	Crashes				People		
	Total	% of Total	Fatal	% of Fatal	Injury	Killed	Injured
Alcohol involvement	13	5	0	0	2	0	5
Red light running	13	5	0	0	0	0	0
Failing to yield	46	18	0	0	15	0	17
Excessive speed	31	12	0	0	12	0	22
Driving left of center	3	1	0	0	0	0	0
Following too close	52	20	0	0	25	0	29
Improper turning	13	5	0	0	2	0	2
Improper backing	16	6	0	0	1	0	1
Mechanical defect	1	0	0	0	0	0	0
Driver inattention	47	18	0	0	18	0	19
Improper driving	1	0	0	0	1	0	1
Other	23	9	0	0	6	0	8
Total	259	100	0	0	82	0	104

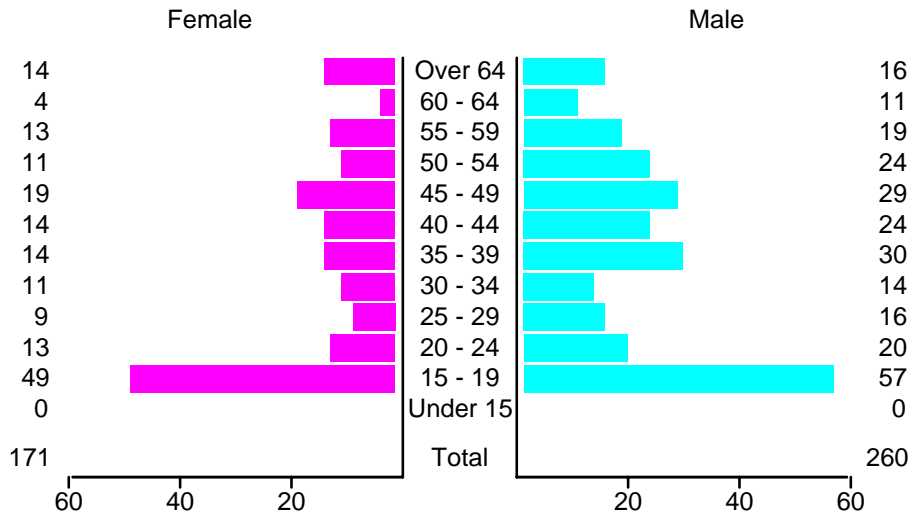
People in Crashes by Age and Sex in Los Alamos, 2004



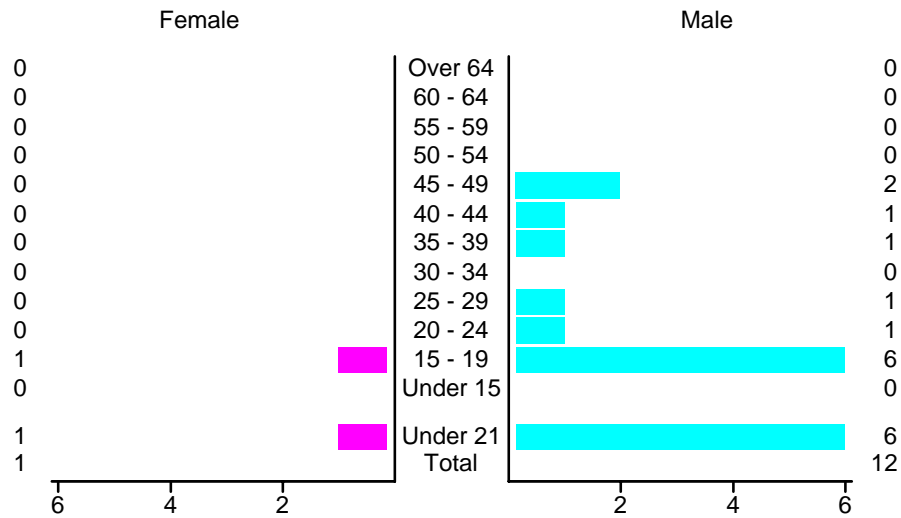
**People in Alcohol-Involved Crashes in Los Alamos, 2004
by Age and Sex**



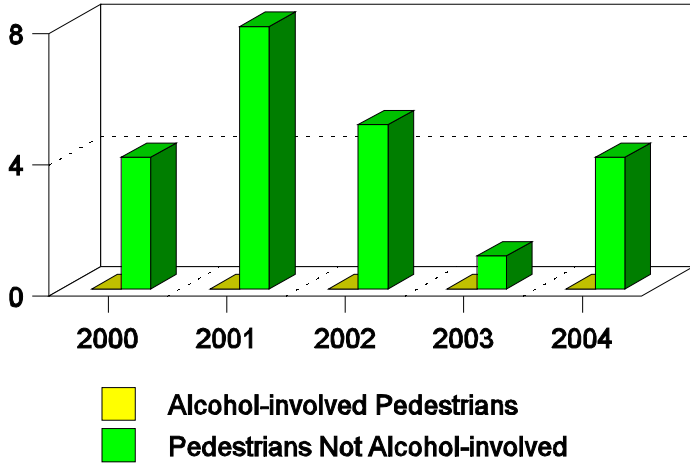
Drivers in Crashes by Age and Sex in Los Alamos, 2004



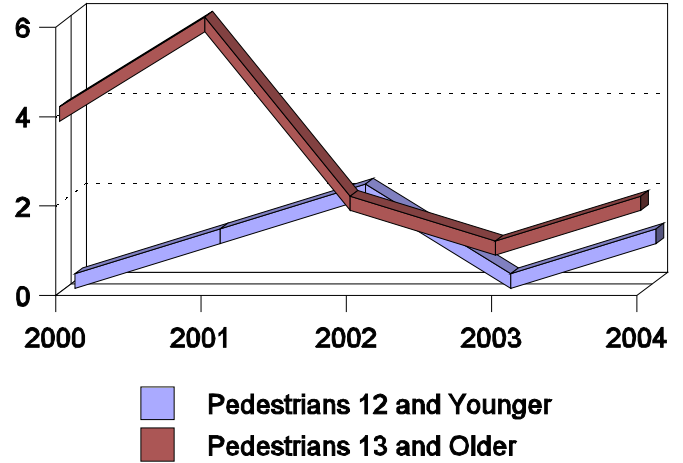
**Alcohol-Involved Drivers in Crashes in Los Alamos, 2004
by Age and Sex**



**Pedestrian in Crashes in Los Alamos
by Pedestrian Alcohol-involvement, 2000-2004**



**Pedestrian in Crashes in Los Alamos
by Age Group, 2000-2004**



'Teenagers' and Young Adults in Crashes in Los Alamos by Vehicle Type, 2004

Vehicle	'Teenage' Drivers			Young Adult Drivers		
	Total	Fatal	Injury	Total	Fatal	Injury
Passenger car	68	0	20	22	0	7
Pickup	14	0	4	6	0	0
Motorcycle	2	0	1	0	0	0
Pedalcyclist	0	0	0	1	0	1
Pedestrian	1	0	1	0	0	0
Van/4 WD	22	0	4	4	0	1
Other	0	0	0	1	0	0
Total	107	0	30	34	0	9

'Teenagers' and Young Adults Killed and Injured in Crashes by Year in Los Alamos, 1995-2004

Year	'Teenagers'				Young Adults			
	All Crashes		Alcohol Crashes		All Crashes		Alcohol Crashes	
	Killed	Injured	Killed	Injured	Killed	Injured	Killed	Injured
2004	0	26	0	0	0	5	0	0
2003	1	26	0	0	0	19	0	2
2002	0	29	0	2	0	10	0	0
2001	0	15	0	0	0	6	0	1
2000	0	37	0	1	0	3	0	0
1999	0	22	0	3	0	7	0	0
1998	0	20	0	0	0	4	0	0
1997	0	33	0	0	0	5	0	0
1996	0	30	0	1	0	8	0	0
1995	0	29	0	0	0	9	0	2