

Los Lunas Community Report, 2004

Demographics

In 2004, there were 25,300 licensed drivers in Los Lunas. Of these, there were 12,539 females and 12,761 males. The population of Los Lunas was 11,748. The total number of crashes in 2004 was 355, yielding a crash rate of 30 per thousand people (total number of crashes 355 divided by total population 11,748 times 1,000). The corresponding rate for the state was 27 per thousand people.

General Crash Information

Since 2002 the number of crashes has shown an upward trend. Fatal and injury crashes have also shown an upward trend since 2002. Belt usage (as a percentage) has increased from last year, while belt usage in crashes involving visible and incapacitating injuries has also increased. There were no fatalities in the seven intersections with the most crashes in 2004. Of these intersections, six involve Main Street.

Alcohol-related Crash Information

Information about alcohol-involved crashes is included in all sections of this report. Of the 62 people convicted of DWI in Los Lunas, 52 percent were first-time DWI convictions (number of first convictions 32 divided by the total number of people convicted 62 times 100). The corresponding percent for the state is 62.

Crash Specifics

Crashes involving other vehicles were the most common class, accounting for 82 percent of all crashes. Crashes involving an other vehicle and a pedestrian resulted in fatalities. Passenger cars were the vehicle type most often involved in crashes, accounting for 54 percent of all vehicles in crashes. Pickups accounted for 27 percent of vehicles involved in crashes. Together these two vehicle types comprised 80 percent of the vehicles involved in injury crashes. The three most common top contributing factors were failing to yield, driver inattention, and following too close. There were two fatal crashes in 2004. The top contributing factors for the fatal crashes were excessive speed and 'other.'

People in Crashes

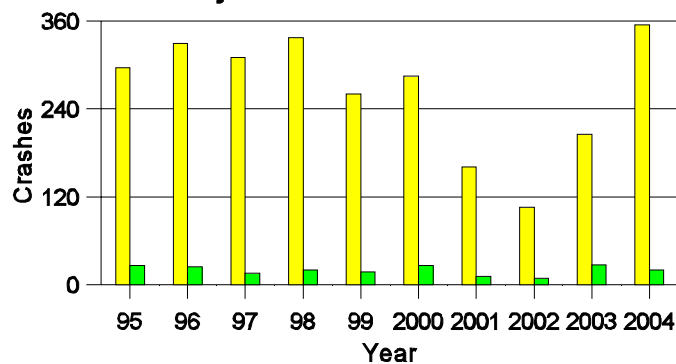
Overall, males were 53 percent of drivers in crashes, and although they also account for 50 percent of licensed drivers in Los Lunas. There were no pedestrians involved in crashes. In 2004, one 'teenager' and no young adults were killed in crashes in Los Lunas. Statewide 18 percent of alcohol-involved drivers were under 21; in Los Lunas 16 percent were under 21.

Note: The 1999 crash file contains 15% fewer crashes than the 1998 file. This may be due to problems implementing the new system after the old system failed, or to under reporting. Care should be used in interpreting differences between 1999 and other years in this report.

- Location of arrest/conviction was determined by police agency/court location, not driver residence.
- Crashes and drivers were counted by the city of occurrence/residence.
- Population was counted according to the Census definition.
The city population data is from the most current 2004 estimates.
- Young adults are people between the ages of 20 and 24.
- 'Teenagers' are people between the ages of 15 and 19.
- Tables only include variable values for which there are data.

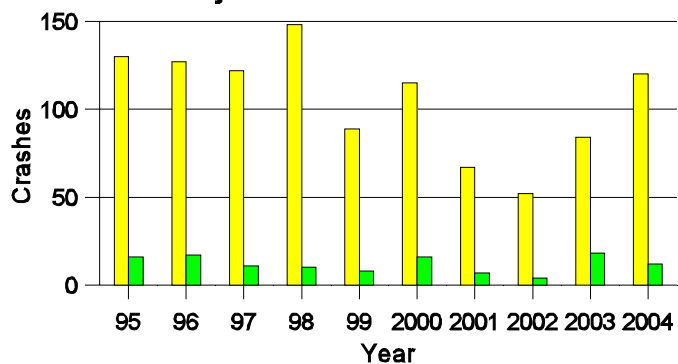
Crashes in Los Lunas

by Alcohol Involvement



Fatal and Injury Crashes in Los Lunas

by Alcohol Involvement



Passenger Vehicle Seatbelt Usage and Injuries in Los Lunas, 2002-2004

Injury Level	2004		2003		2002	
	Total	No Belt	Total	No Belt	Total	No Belt
Killed	1	0	3	3	0	0
Incapacitating injury	31	6	35	1	7	2
Visible injury	28	2	33	9	15	0
Complaint of injury	130	1	71	3	54	1
Unhurt	765	9	441	13	181	6
Total	955	18	583	29	257	9

The Seven Intersections in Los Lunas with the Most Crashes, 2004

Intersection	Crashes			People	
	Total	Fatal	Injury	Killed	Injured
Carson Dr @ Main St	12	0	2	0	5
Court House Rd @ Highway Ave	8	0	4	0	4
Emilio Lopez Rd @ Main St	8	0	1	0	1
Highway Ave @ Main St	19	0	9	0	12
I-25 @ Main St	9	0	1	0	2
Los Lentos Rd @ Main St	11	0	1	0	1
Main St @ NM 47	14	0	4	0	5

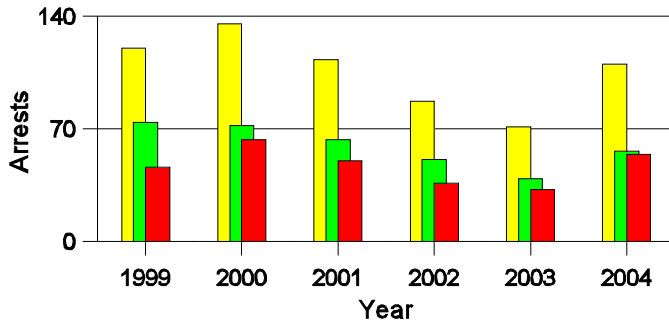
**Lifetime DWI Convictions for Drivers
Convicted of DWI Violations in Los Lunas, 2004**

Convictions	Since 1999	Since 1980
1st	49	32
2nd	9	17
3rd	4	9
4th	0	3
5th	0	0
6th	0	1
7th	0	0
8th	0	0
9th	0	0
10 or more	0	0
Total	62	62

Convictions are counts of people convicted of DWI by 7/2005 for violations in 2004 in Los Lunas.
Convictions are not comparable to arrests.

DWI Arrests in Los Lunas

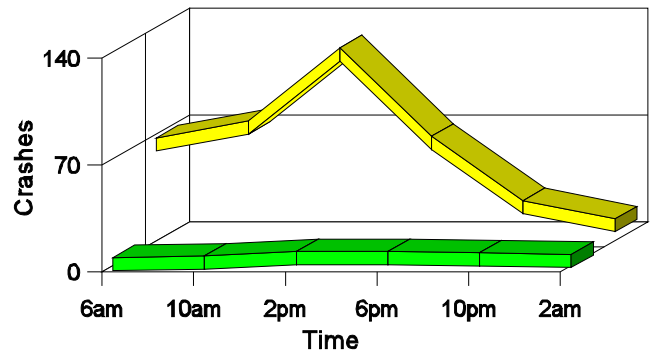
Showing First Arrests and Repeat Offenders



■ Total DWI Arrests
■ First DWI Arrests
■ Repeat DWI Arrests

Crashes in Los Lunas

by Hour and Alcohol Involvement



■ All Crashes
■ Alcohol-involved Crashes

Crashes in Los Lunas by Class, 2004

Class	Crashes					People	
	Total	% of Total	Fatal	% of Fatal	Injury	Killed	Injured
Other vehicle	291	82	1	50	95	1	169
Fixed object	34	10	0	0	12	0	15
Parked vehicle	9	3	0	0	1	0	3
Overturn	14	4	0	0	6	0	11
Other non-collision	3	1	0	0	2	0	2
Pedalcyclist	1	0	1	50	0	1	0
Railroad train	1	0	0	0	1	0	1
Animal	1	0	0	0	1	0	1
Other object	1	0	0	0	0	0	0
Total	355	100	2	100	118	2	202

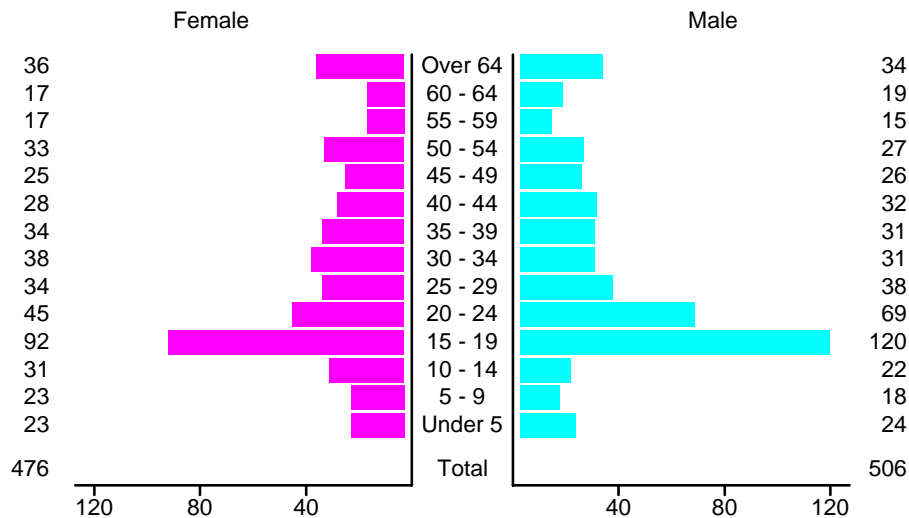
Crashes in Los Lunas by Vehicle Type, 2004

Vehicle Type	Vehicles				People		
	Total	% of Total	Fatal	% of Fatal	Injury	Killed	Injured
Passenger car	369	54	0	0	123	0	121
Pickup	187	27	2	50	60	0	43
Semi	10	1	0	0	1	0	0
Bus	3	0	0	0	2	0	0
Motorcycle	7	1	0	0	5	0	6
Pedalcyclist	1	0	1	25	0	1	0
Van/4 WD	85	12	1	25	31	1	32
Other	4	1	0	0	3	0	0
Unknown	21	3	0	0	3	0	0
Total	687	100	4	100	228	2	202

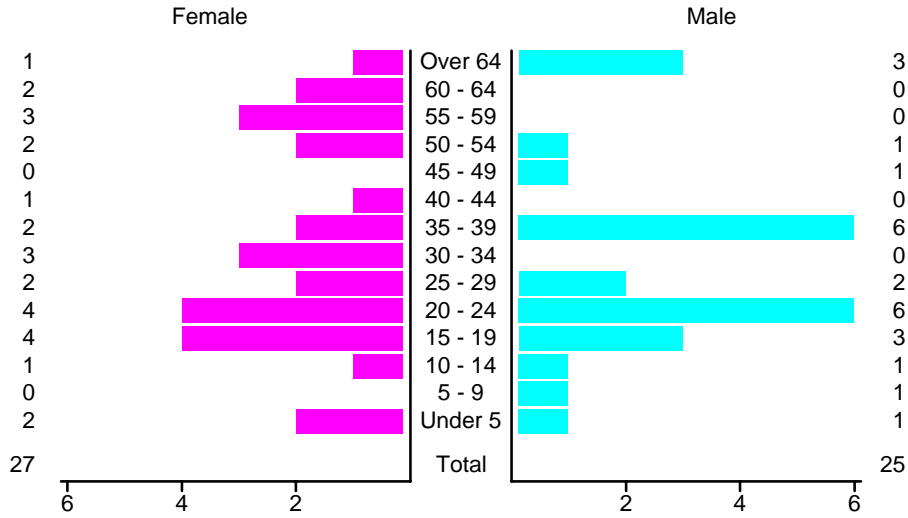
Crashes in Los Lunas by Top Contributing Factor, 2004

Contributing Factor	Crashes				People		
	Total	% of Total	Fatal	% of	Injury	Killed	Injured
Alcohol involvement	20	6	0	0	12	0	25
Red light running	24	7	0	0	9	0	16
Failing to yield	77	22	0	0	33	0	56
Excessive speed	47	13	1	50	18	1	27
Driving left of center	8	2	0	0	1	0	1
Following too close	64	18	0	0	18	0	31
Improper turning	14	4	0	0	1	0	1
Improper overtaking	8	2	0	0	2	0	4
Improper backing	9	3	0	0	0	0	0
Inop. traffic control	1	0	0	0	0	0	0
Mechanical defect	5	1	0	0	1	0	1
Driver inattention	70	20	0	0	21	0	37
Other	8	2	1	50	2	1	3
Total	355	100	2	100	118	2	202

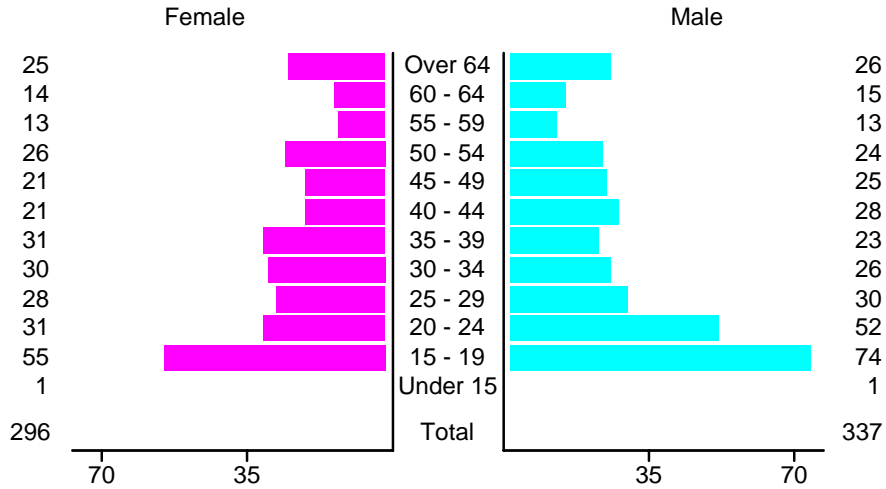
People in Crashes by Age and Sex in Los Lunas, 2004



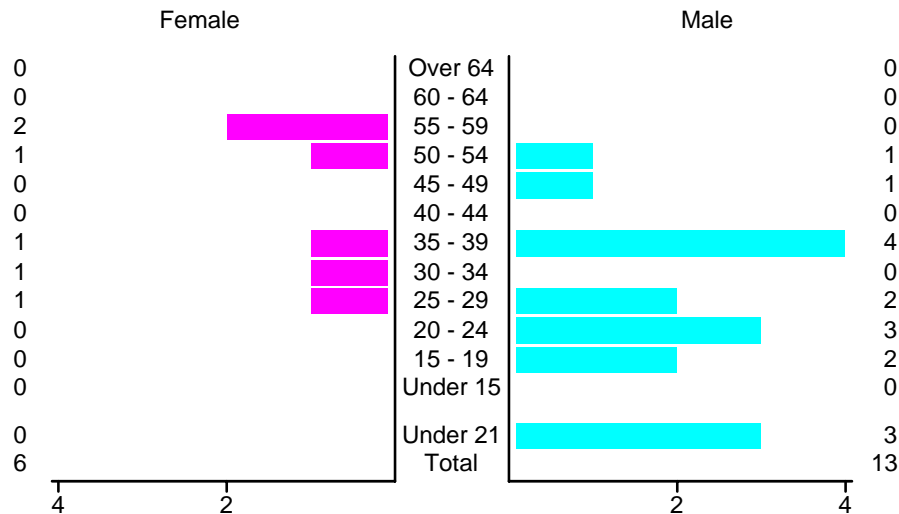
**People in Alcohol-Involved Crashes in Los Lunas, 2004
by Age and Sex**



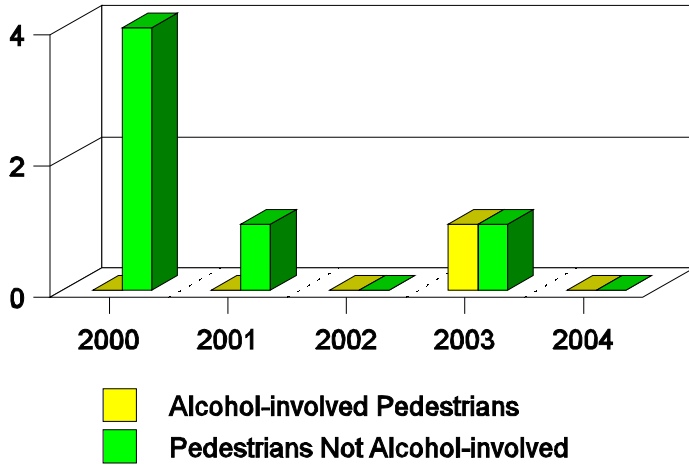
Drivers in Crashes by Age and Sex in Los Lunas, 2004



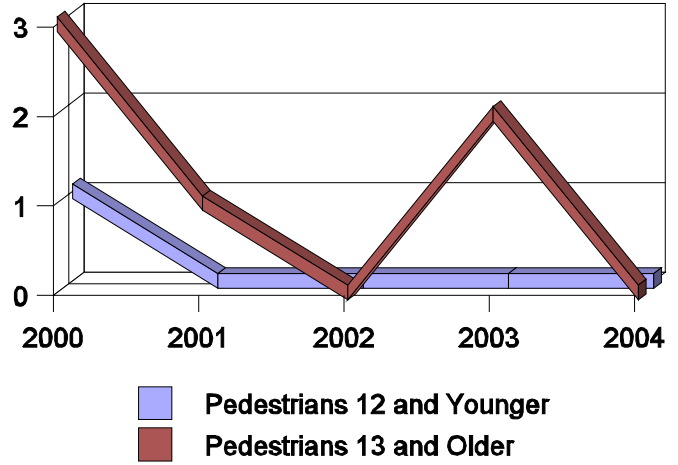
**Alcohol-Involved Drivers in Crashes in Los Lunas, 2004
by Age and Sex**



**Pedestrian in Crashes in Los Lunas
by Pedestrian Alcohol-involvement, 2000-2004**



**Pedestrian in Crashes in Los Lunas
by Age Group, 2000-2004**



'Teenagers' and Young Adults in Crashes in Los Lunas by Vehicle Type, 2004

Vehicle	'Teenage' Drivers			Young Adult Drivers		
	Total	Fatal	Injury	Total	Fatal	Injury
Passenger car	79	0	19	50	0	18
Pickup	35	1	17	23	0	5
Semi	1	0	0	1	0	0
Motorcycle	0	0	0	2	0	1
Van/4 WD	14	1	5	6	0	3
Unknown	0	0	0	1	0	0
Total	129	2	41	83	0	27

'Teenagers' and Young Adults Killed and Injured in Crashes by Year in Los Lunas, 1995-2004

Year	'Teenagers'				Young Adults			
	All Crashes		Alcohol Crashes		All Crashes		Alcohol Crashes	
	Killed	Injured	Killed	Injured	Killed	Injured	Killed	Injured
2004	1	36	0	4	0	24	0	6
2003	0	37	0	7	0	14	0	2
2002	0	17	0	1	0	6	0	1
2001	1	26	0	3	1	10	1	2
2000	1	32	1	2	0	19	0	6
1999	0	38	0	4	0	9	0	1
1998	0	66	0	5	1	15	1	0
1997	0	28	0	2	0	19	0	2
1996	1	33	0	7	0	24	0	6
1995	1	64	1	8	0	20	0	6