

Lovington Community Report, 2004

Demographics

In 2004, there were 8,477 licensed drivers in Lovington. Of these, there were 4,247 females and 4,230 males. The population of Lovington was 9,553. The total number of crashes in 2004 was 225, yielding a crash rate of 24 per thousand people (total number of crashes 225 divided by total population 9,553 times 1,000). The corresponding rate for the state was 27 per thousand people.

General Crash Information

Since 1995 the number of crashes has shown no consistent pattern. Fatal and injury crashes have shown an upward trend since 2002. Belt usage (as a percentage) increased from last year, while belt usage in crashes involving visible and incapacitating injuries also increased. There were no fatalities in the seven intersections with the most crashes in 2004. Of these intersections, three involve Avenue D.

Alcohol-related Crash Information

Information about alcohol-involved crashes is included in all sections of this report. Of the 38 people convicted of DWI in Lovington, 71 percent were first-time DWI convictions (number of first convictions 27 divided by the total number of people convicted 38 times 100). The corresponding percent for the state is 62.

Crash Specifics

Crashes involving other vehicles were the most common class, accounting for 68 percent of all crashes. Passenger cars were the vehicle type most often involved in crashes, accounting for 47 percent of all vehicles in crashes. Pickups accounted for 34 percent of vehicles involved in crashes. Together these two vehicle types comprised 80 percent of the vehicles involved in injury crashes. The three most common top contributing factors were failing to yield, improper backing, and following too close. There were no fatal crashes in 2004.

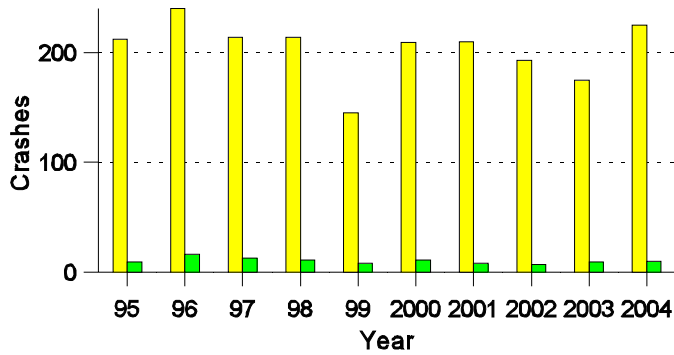
People in Crashes

Overall, there was no over representation of crashes for male drivers in Lovington. Five pedestrians were involved in crashes. In 2004, no 'teenagers' or young adults were killed in crashes in Lovington. Statewide 18 percent of alcohol-involved drivers were under 21; in Lovington 20 percent were under 21.

Note: The 1999 crash file contains 15% fewer crashes than the 1998 file. This may be due to problems implementing the new system after the old system failed, or to under reporting. Care should be used in interpreting differences between 1999 and other years in this report.

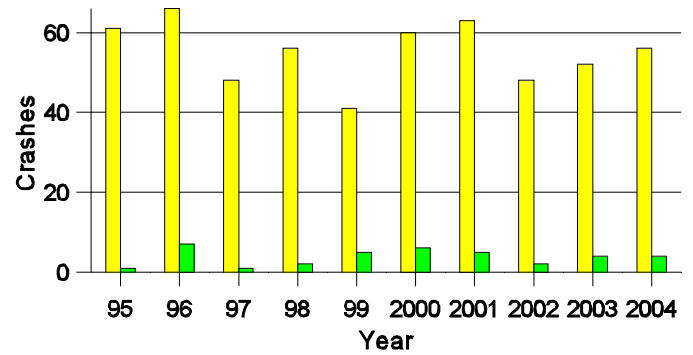
- Location of arrest/conviction was determined by police agency/court location, not driver residence.
- Crashes and drivers were counted by the city of occurrence/residence.
- Population was counted according to the Census definition.
The city population data is from the most current 2004 estimates.
- Young adults are people between the ages of 20 and 24.
- 'Teenagers' are people between the ages of 15 and 19.
- Tables only include variable values for which there are data.

Crashes in Lovington by Alcohol Involvement



■ All Crashes
■ Alcohol-involved Crashes

Fatal and Injury Crashes in Lovington by Alcohol Involvement



■ All Fatal and Injury Crashes
■ Alcohol-involved Fatal and Injury Crashes

Passenger Vehicle Seatbelt Usage and Injuries in Lovington, 2002-2004

Injury Level	2004		2003		2002	
	Total	No Belt	Total	No Belt	Total	No Belt
Killed	0	0	1	1	0	0
Incapacitating injury	2	0	3	0	6	2
Visible injury	13	2	21	4	14	0
Complaint of injury	52	1	40	0	31	0
Unhurt	415	4	337	10	335	13
Total	482	7	402	15	386	15

The Seven Intersections in Lovington with the Most Crashes, 2004

Intersection	Crashes			People	
	Total	Fatal	Injury	Killed	Injured
2nd St @ Ave J	4	0	1	0	2
2nd St @ Jackson Ave	4	0	0	0	0
9th St @ Ave D	7	0	0	0	0
Ave C @ Love St	4	0	1	0	1
Ave C @ Main St	6	0	2	0	3
Ave D @ Commercial St	5	0	0	0	0
Ave D @ Main St	12	0	0	0	0

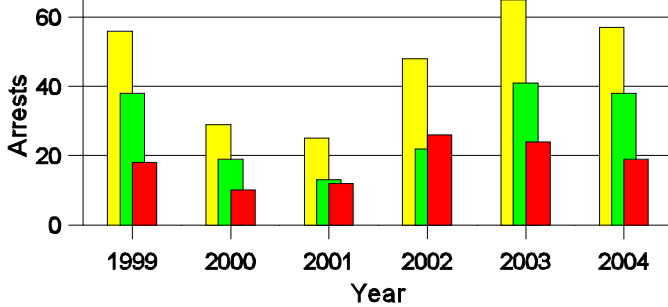
**Lifetime DWI Convictions for Drivers
Convicted of DWI Violations in Lovington, 2004**

Convictions	Since 1999	Since 1980
1st	33	27
2nd	5	7
3rd	0	3
4th	0	0
5th	0	0
6th	0	0
7th	0	0
8th	0	1
9th	0	0
10 or more	0	0
Total	38	38

Convictions are counts of people convicted of DWI by 7/2005 for violations in 2004 in Lovington.
Convictions are not comparable to arrests.

DWI Arrests in Lovington

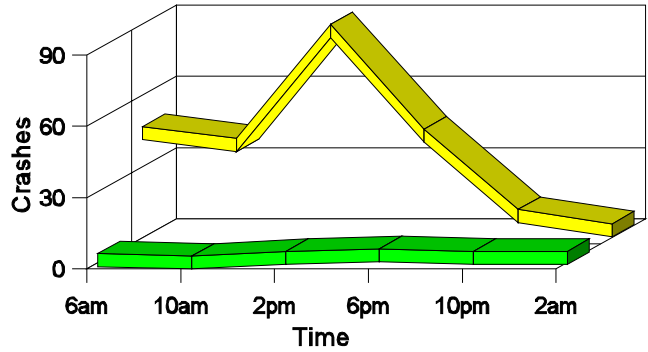
Showing First Arrests and Repeat Offenders



■ Total DWI Arrests
■ First DWI Arrests
■ Repeat DWI Arrests

Crashes in Lovington

by Hour and Alcohol Involvement



■ All Crashes
■ Alcohol-involved Crashes

Crashes in Lovington by Class, 2004

Class	Crashes				People		
	Total	% of Total	Fatal	% of Fatal	Injury	Killed	Injured
Other vehicle	154	68	0	0	43	0	64
Pedestrian	5	2	0	0	4	0	4
Fixed object	20	9	0	0	1	0	1
Parked vehicle	40	18	0	0	5	0	6
Overturn	1	0	0	0	0	0	0
Other non-collision	1	0	0	0	1	0	1
Pedalcyclist	4	2	0	0	2	0	2
Total	225	100	0	0	56	0	78

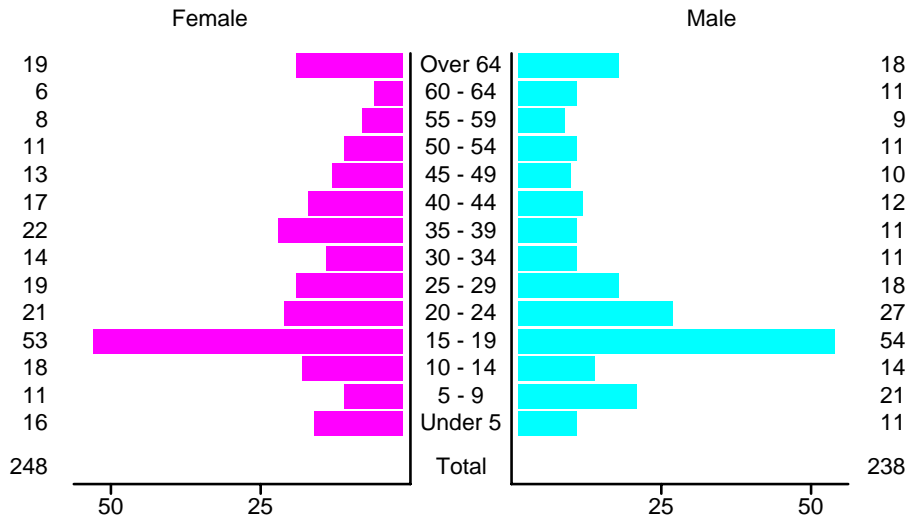
Crashes in Lovington by Vehicle Type, 2004

Vehicle Type	Vehicles					People	
	Total	% of Total	Fatal	% of Fatal	Injury	Killed	Injured
Passenger car	201	47	0	0	63	0	54
Pickup	145	34	0	0	26	0	12
Semi	7	2	0	0	1	0	0
Motorcycle	3	1	0	0	1	0	1
Pedalcyclist	5	1	0	0	2	0	2
Pedestrian	5	1	0	0	4	0	4
Van/4 WD	43	10	0	0	11	0	4
Other	3	1	0	0	2	0	1
Unknown	20	5	0	0	1	0	0
Total	432	100	0	0	111	0	78

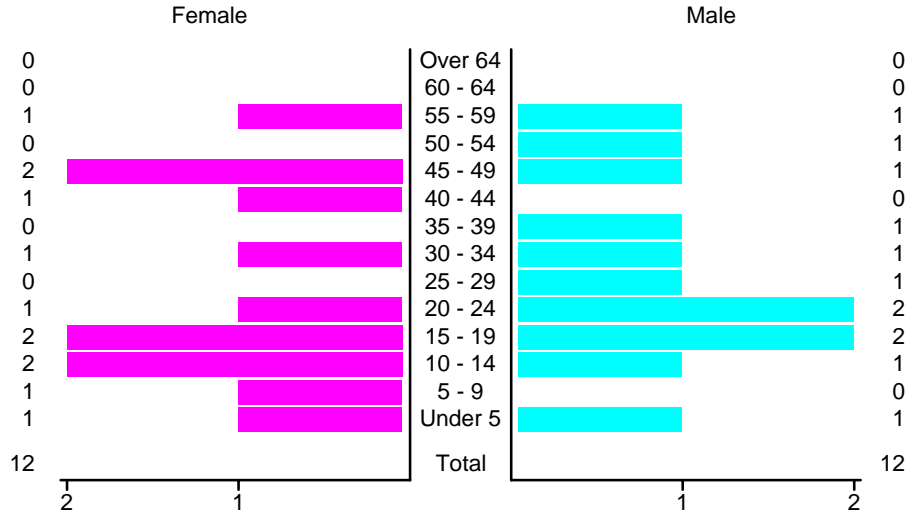
Crashes in Lovington by Top Contributing Factor, 2004

Contributing Factor	Crashes					People	
	Total	% of Total	Fatal	% of Fatal	Injury	Killed	Injured
Alcohol involvement	10	4	0	0	4	0	4
Red light running	22	10	0	0	7	0	8
Failing to yield	42	19	0	0	15	0	21
Excessive speed	16	7	0	0	2	0	4
Driving left of center	1	0	0	0	0	0	0
Following too close	35	16	0	0	10	0	18
Improper turning	16	7	0	0	1	0	1
Improper overtaking	3	1	0	0	1	0	2
Improper backing	36	16	0	0	3	0	3
Mechanical defect	3	1	0	0	1	0	1
Driver inattention	31	14	0	0	10	0	14
Other	10	4	0	0	2	0	2
Total	225	100	0	0	56	0	78

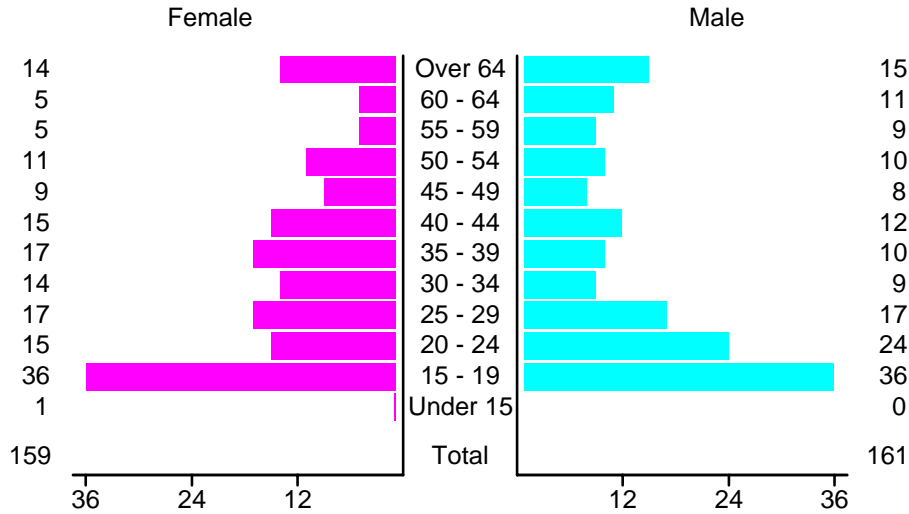
People in Crashes by Age and Sex in Lovington, 2004



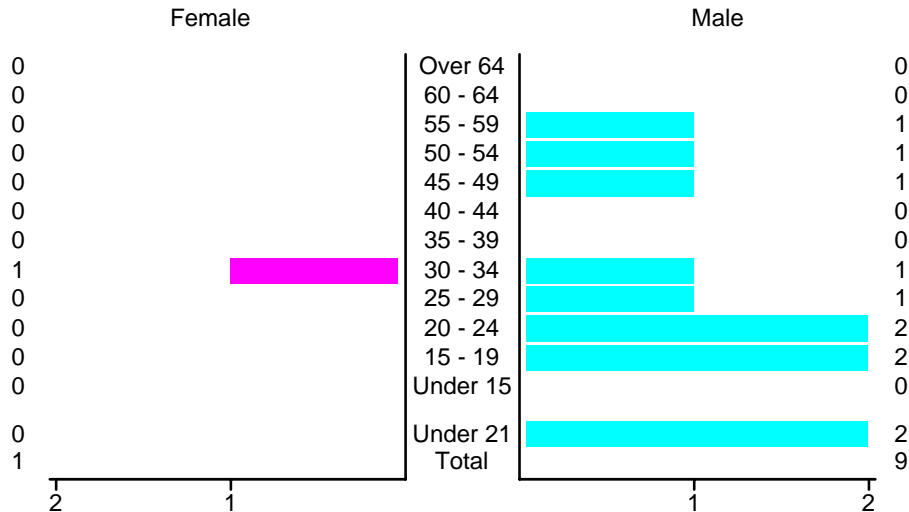
**People in Alcohol-Involved Crashes in Lovington, 2004
by Age and Sex**



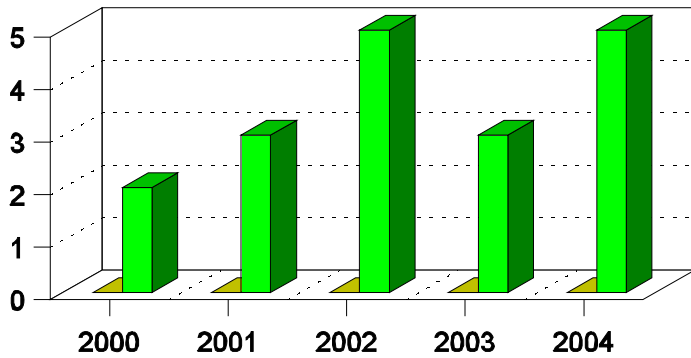
Drivers in Crashes by Age and Sex in Lovington, 2004



**Alcohol-Involved Drivers in Crashes in Lovington, 2004
by Age and Sex**

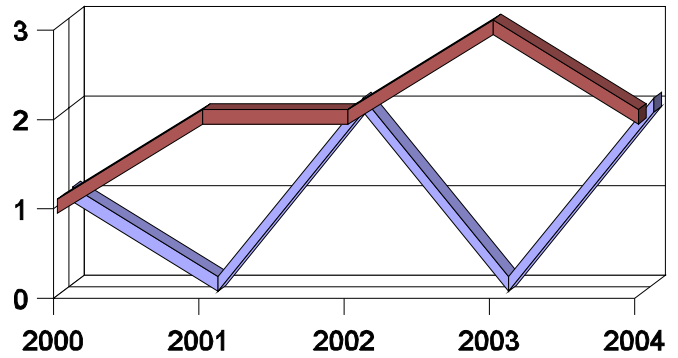


**Pedestrian in Crashes in Lovington
by Pedestrian Alcohol-involvement, 2000-2004**



Alcohol-involved Pedestrians
 Pedestrians Not Alcohol-involved

**Pedestrian in Crashes in Lovington
by Age Group, 2000-2004**



Pedestrians 12 and Younger
 Pedestrians 13 and Older

'Teenagers' and Young Adults in Crashes in Lovington by Vehicle Type, 2004

Vehicle	'Teenage' Drivers			Young Adult Drivers		
	Total	Fatal	Injury	Total	Fatal	Injury
Passenger car	46	0	14	17	0	6
Pickup	18	0	5	13	0	0
Semi	0	0	0	2	0	0
Motorcycle	1	0	0	1	0	1
Pedalcyclist	1	0	1	0	0	0
Pedestrian	1	0	1	0	0	0
Van/4 WD	7	0	2	4	0	0
Other	0	0	0	2	0	1
Total	74	0	23	39	0	8

'Teenagers' and Young Adults Killed and Injured in Crashes by Year in Lovington, 1995-2004

Year	'Teenagers'				Young Adults			
	All Crashes		Alcohol Crashes		All Crashes		Alcohol Crashes	
	Killed	Injured	Killed	Injured	Killed	Injured	Killed	Injured
2004	0	17	0	0	0	6	0	1
2003	0	14	0	0	0	6	0	0
2002	0	13	0	1	0	8	0	1
2001	0	22	0	3	0	13	0	1
2000	1	27	1	2	0	6	0	2
1999	2	21	2	5	0	5	0	1
1998	0	29	0	0	0	14	0	0
1997	0	21	0	0	0	9	0	0
1996	0	31	0	4	0	20	0	0
1995	0	21	0	0	0	11	0	1