

Navajo Community Report, 2004

Demographics

In 2004, there were 973 licensed drivers in the Navajo Nation in NM. Of these, there were 516 females and 457 males. The total number of crashes in 2004 was 231, yielding a crash rate of 237 per thousand licensed drivers (total number of crashes 231 divided by total number of licensed drivers 973 times 1,000). The corresponding rate for the state was 51 per thousand licensed drivers.

General Crash Information

Since 1995 the number of crashes has shown no consistent pattern. Fatal and injury crashes are also the lowest since 1995. Belt usage (as a percentage) has decreased from last year, while belt usage in crashes involving visible and incapacitating injuries has increased.

Alcohol-related Crash Information

DWI conviction data are not available for Navajo.

Crash Specifics

Crashes involving other vehicles were the most common class, accounting for 36 percent of all crashes. Crashes involving other vehicles and overturns were the most common crash class which resulted in fatalities. Pickups were the vehicle type most often involved in crashes, accounting for 40 percent of all vehicles in crashes. Passenger cars accounted for 37 percent of vehicles involved in crashes. Together these two vehicle types comprised 78 percent of the vehicles involved in injury crashes. The three most common top contributing factors were alcohol involvement, excessive speed, and driver inattention. There were 18 fatal crashes in 2004. The most common top contributing factor for the fatal crashes was alcohol involvement.

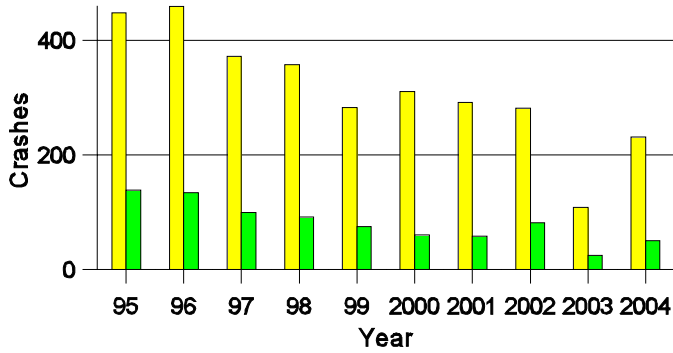
People in Crashes

Overall, males were 63 percent of drivers in crashes, although they account for only 47 percent of licensed drivers in the Navajo Nation in NM. There were four pedestrians involved in crashes. In 2004, one 'teenager' and five young adults were killed in crashes in the Navajo Nation in NM. Statewide 18 percent of alcohol-involved drivers were under 21; in the Navajo Nation in NM 16 percent were under 21.

Note: The 1999 crash file contains 15% fewer crashes than the 1998 file. This may be due to problems implementing the new system after the old system failed, or to under reporting. Care should be used in interpreting differences between 1999 and other years in this report.

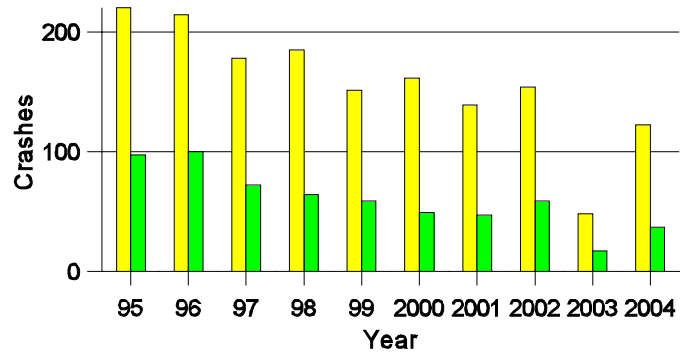
- Location of arrest/conviction was determined by police agency/court location, not driver residence.
- Crashes and drivers were counted by the city of occurrence/residence.
- Young adults are people between the ages of 20 and 24.
- 'Teenagers' are people between the ages of 15 and 19.
- Tables only include variable values for which there are data.

**Crashes in Navajo
by Alcohol Involvement**



■ All Crashes
■ Alcohol-involved Crashes

**Fatal and Injury Crashes in Navajo
by Alcohol Involvement**

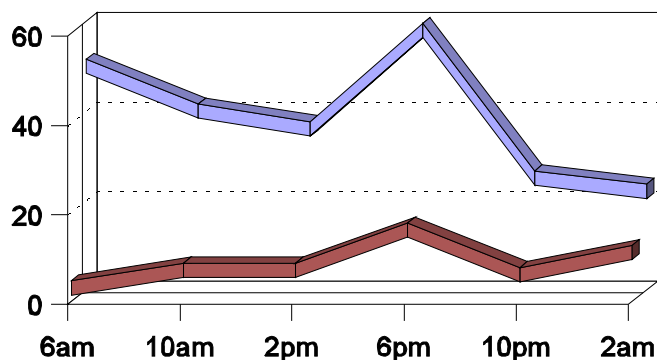


■ All Fatal and Injury Crashes
■ Alcohol-involved Fatal and Injury Crashes

Passenger Vehicle Seatbelt Usage and Injuries in Navajo, 2002-2004

Injury Level	2004		2003		2002	
	Total	No Belt	Total	No Belt	Total	No Belt
Killed	21	13	8	5	26	20
Incapacitating injury	26	6	4	1	37	14
Visible injury	46	8	20	4	57	11
Complaint of injury	105	7	56	10	141	31
Unhurt	264	18	152	2	388	17
Total	462	52	240	22	649	93

**Crashes in Navajo
by Hour and Alcohol Involvement**



■ All Crashes
■ Alcohol-involved Crashes

Crashes in Navajo by Class, 2004

Class	Crashes					People	
	Total	% of Total	Fatal	% of Fatal	Injury	Killed	Injured
Other vehicle	83	36	10	56	40	14	98
Pedestrian	4	2	1	6	3	1	4
Fixed object	37	16	1	6	15	1	20
Veh. on other roadway	1	0	1	6	0	3	0
Parked vehicle	3	1	0	0	2	0	4
Overturn	64	28	5	28	33	7	53
Other non-collision	7	3	0	0	2	0	5
Animal	27	12	0	0	8	0	9
Other object	5	2	0	0	1	0	2
Total	231	100	18	100	104	26	195

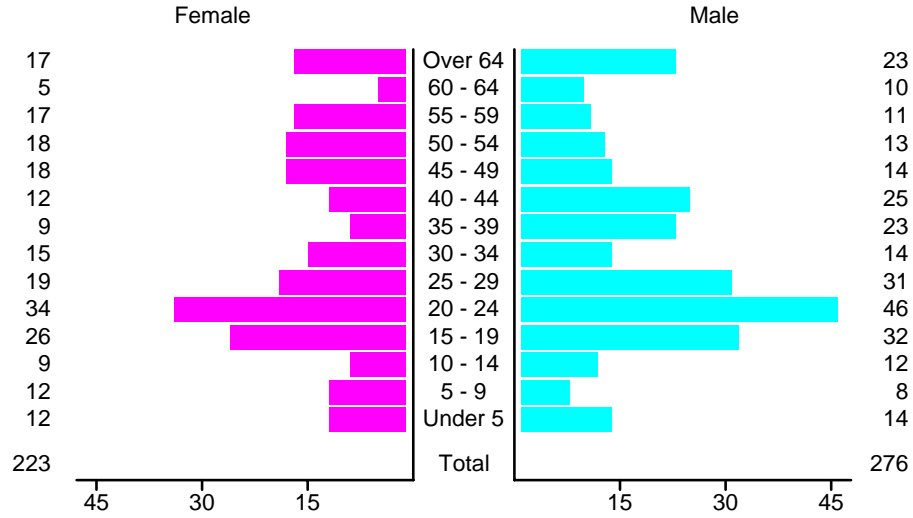
Crashes in Navajo by Vehicle Type, 2004

Vehicle Type	Vehicles					People	
	Total	% of Total	Fatal	% of Fatal	Injury	Killed	Injured
Passenger car	122	37	12	38	56	12	92
Pickup	130	40	9	28	61	11	74
Semi	19	6	5	16	9	1	2
Motorcycle	3	1	0	0	3	0	3
Pedestrian	4	1	1	3	3	1	4
Van/4 WD	41	13	5	16	14	1	20
Other	2	1	0	0	1	0	0
Unknown	5	2	0	0	3	0	0
Total	326	100	32	100	150	26	195

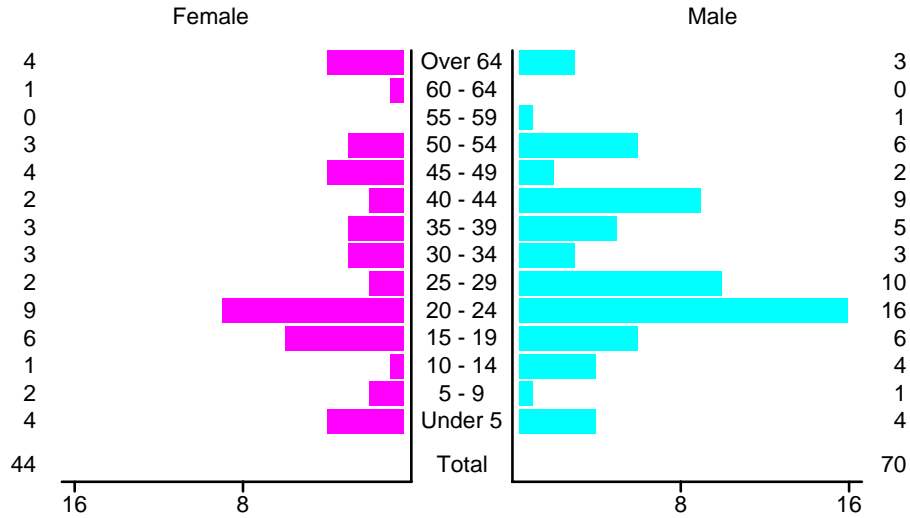
Crashes in Navajo by Top Contributing Factor, 2004

Contributing Factor	Crashes					People	
	Total	% of Total	Fatal	% of Fatal	Injury	Killed	Injured
Alcohol involvement	50	22	12	67	25	18	62
Red light running	6	3	0	0	3	0	3
Failing to yield	12	5	1	6	4	1	15
Excessive speed	48	21	3	17	28	5	43
Driving left of center	7	3	0	0	5	0	5
Following too close	6	3	0	0	3	0	8
Improper turning	6	3	0	0	3	0	7
Improper overtaking	4	2	0	0	2	0	3
Improper backing	2	1	0	0	0	0	0
Mechanical defect	5	2	0	0	1	0	1
Driver inattention	35	15	1	6	12	1	22
Other	50	22	1	6	18	1	26
Total	231	100	18	100	104	26	195

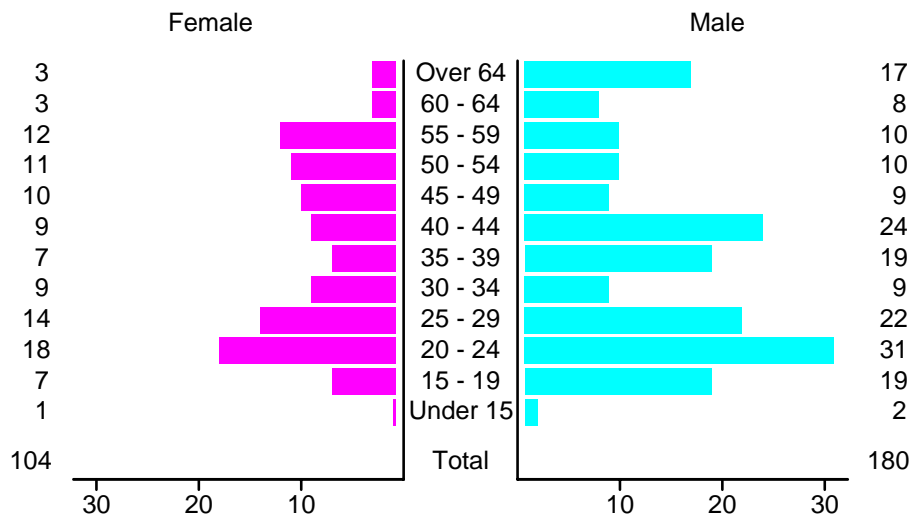
People in Crashes in Navajo, 2004 by Age and Sex



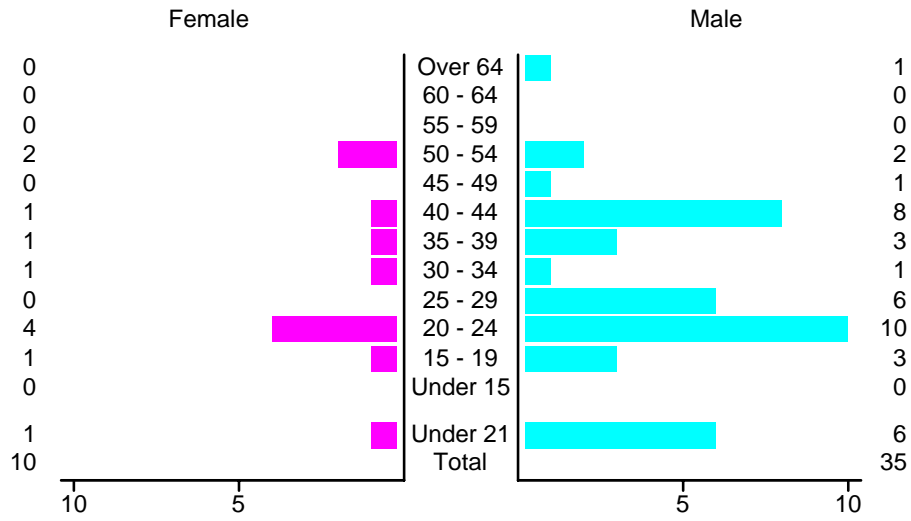
People in Alcohol-Involved Crashes in Navajo, 2004 by Age and Sex



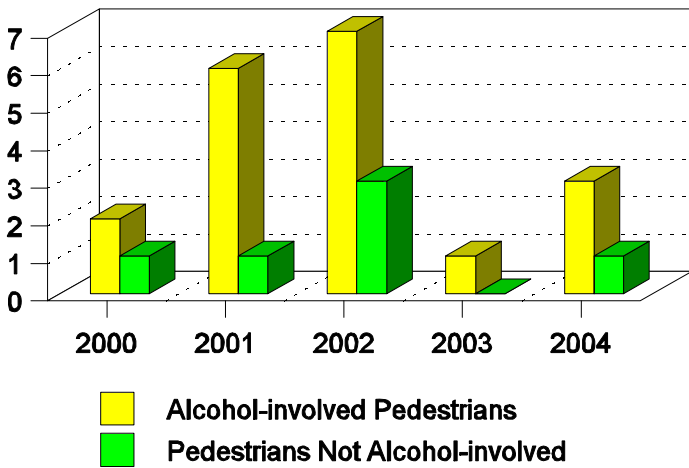
Drivers in Crashes by Age and Sex in Navajo, 2004



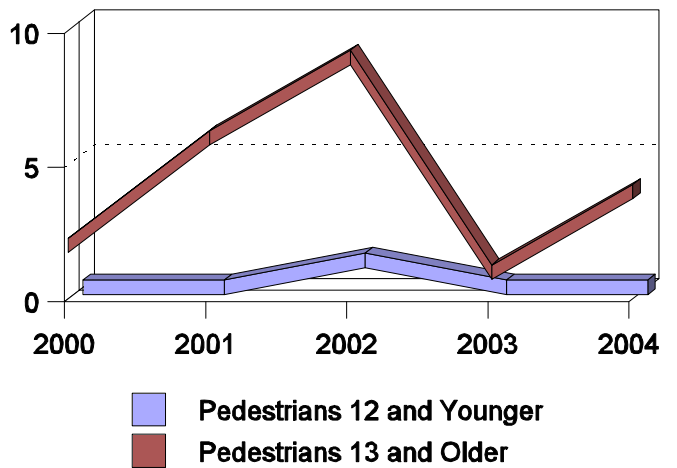
Alcohol-Involved Drivers in Crashes in Navajo, 2004 by Age and Sex



Pedestrians in Crashes in Navajo by Pedestrian Alcohol-involvement, 2000-2004



Pedestrian in Crashes in Navajo by Age Group, 2000-2004



'Teenagers' and Young Adults in Crashes in Navajo by Vehicle Type, 2004

Vehicle	'Teenage' Drivers			Young Adult Drivers		
	Total	Fatal	Injury	Total	Fatal	Injury
Passenger car	16	1	8	20	1	11
Pickup	9	1	4	23	3	10
Motorcycle	0	0	0	1	0	1
Pedestrian	1	0	1	1	0	1
Van/4 WD	1	0	0	5	2	2
Total	27	2	13	50	6	25

'Teenagers' and Young Adults Killed and Injured in Crashes by Year in Navajo, 1995-2004

Year	'Teenagers'				Young Adults			
	All Crashes		Alcohol Crashes		All Crashes		Alcohol Crashes	
	Killed	Injured	Killed	Injured	Killed	Injured	Killed	Injured
2004	1	20	1	6	5	36	4	13
2003	0	13	0	1	2	5	2	2
2002	7	40	3	6	1	39	1	12
2001	5	23	3	8	5	28	5	11
2000	5	47	1	13	3	36	3	11
1999	4	36	1	13	3	20	2	11
1998	2	37	1	15	1	41	1	12
1997	1	50	0	23	5	41	4	21
1996	5	74	4	38	4	66	4	37
1995	0	41	0	13	1	52	1	30