

Portales Community Report, 2004

Demographics

In 2004, there were 10,866 licensed drivers in Portales. Of these, there were 5,551 females and 5,315 males. The population of Portales was 11,214. The total number of crashes in 2004 was 299, yielding a crash rate of 27 per thousand people (total number of crashes 299 divided by total population 11,214 times 1,000). The corresponding rate for the state was 27 per thousand people.

General Crash Information

Since 1995 the number of crashes has no consistent pattern. Fatal and injury crashes have shown no consistent pattern since 1995. Belt usage (as a percentage) is about the same as last year, while belt usage in crashes involving visible and incapacitating injuries increased. There were no fatalities in the seven intersections with the most crashes in 2004. Of these intersections, six involve First Street.

Alcohol-related Crash Information

Information about alcohol-involved crashes is included in all sections of this report. Of the 38 people convicted of DWI in Portales, 79 percent were first-time DWI convictions (number of first convictions 30 divided by the total number of people convicted 38 times 100). The corresponding percent for the state is 62.

Crash Specifics

Crashes involving other vehicles were the most common class, accounting for 72 percent of all crashes. Passenger cars were the vehicle type most often involved in crashes, accounting for 50 percent of all vehicles in crashes. Pickups accounted for 29 percent of vehicles involved in crashes. Together these two vehicle types comprised 76 percent of the vehicles involved in injury crashes. The three most common top contributing factors were failing to yield, driver inattention, and following too close. There were no fatal crashes in 2004.

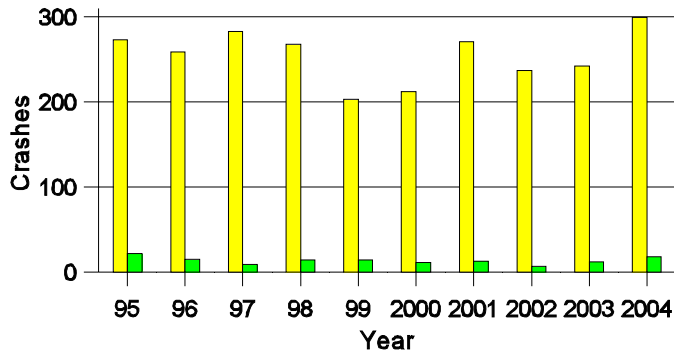
People in Crashes

Overall, males were 50 percent of drivers in crashes, although they account for only 49 percent of licensed drivers in Portales. There were three pedestrians in crashes. In 2004, no 'teenagers' or young adults were killed in crashes in Portales. Statewide 18 percent of alcohol-involved drivers were under 21; in Portales 25 percent were under 21.

Note: The 1999 crash file contains 15% fewer crashes than the 1998 file. This may be due to problems implementing the new system after the old system failed, or to under reporting. Care should be used in interpreting differences between 1999 and other years in this report.

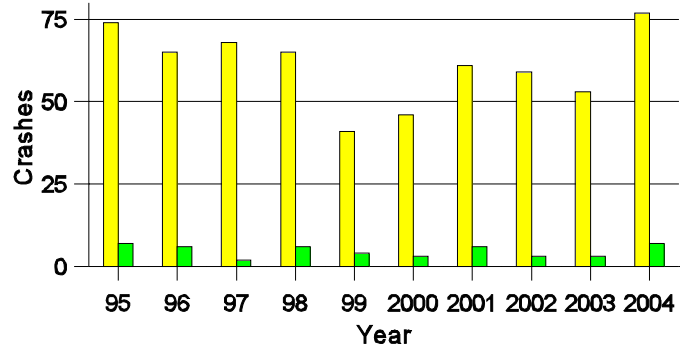
- Location of arrest/conviction was determined by police agency/court location, not driver residence.
- Crashes and drivers were counted by the city of occurrence/residence.
- Population was counted according to the Census definition.
The city population data is from the most current 2004 estimates.
- Young adults are people between the ages of 20 and 24.
- 'Teenagers' are people between the ages of 15 and 19.
- Tables only include variable values for which there are data.

**Crashes in Portales
by Alcohol Involvement**



■ All Crashes
■ Alcohol-involved Crashes

**Fatal and Injury Crashes in Portales
by Alcohol Involvement**



■ All Fatal and Injury Crashes
■ Alcohol-involved Fatal and Injury Crashes

Passenger Vehicle Seatbelt Usage and Injuries in Portales, 2002-2004

Injury Level	2004		2003		2002	
	Total	No Belt	Total	No Belt	Total	No Belt
Killed	0	0	0	0	1	0
Incapacitating injury	12	1	5	0	7	0
Visible injury	14	3	20	5	17	3
Complaint of injury	66	5	44	3	51	2
Unhurt	565	17	438	12	423	16
Total	657	26	507	20	499	21

The Seven Intersections in Portales with the Most Crashes, 2004

Intersection	Crashes			People	
	Total	Fatal	Injury	Killed	Injured
18th St @ Ave D	4	0	1	0	2
1st St @ Abilene Ave	5	0	2	0	5
1st St @ Ave B	4	0	0	0	0
1st St @ Ave C	4	0	2	0	2
1st St @ Ave I	6	0	0	0	0
1st St @ Ave J	5	0	3	0	3
1st St @ Chicago Ave	6	0	1	0	2

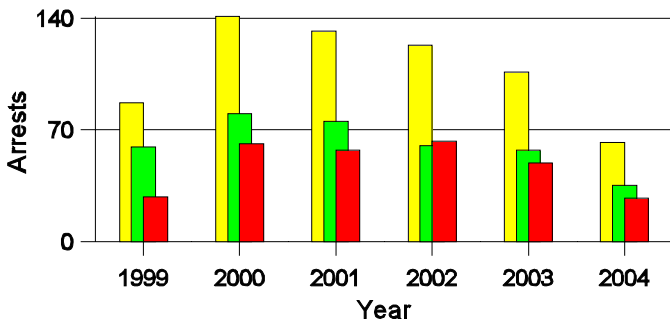
**Lifetime DWI Convictions for Drivers
Convicted of DWI Violations in Portales, 2004**

Convictions	Since 1999	Since 1980
1st	37	30
2nd	1	6
3rd	0	1
4th	0	1
5th	0	0
6th	0	0
7th	0	0
8th	0	0
9th	0	0
10 or more	0	0
Total	38	38

Convictions are counts of people convicted of DWI by 7/2005 for violations in 2004 in Portales.
Convictions are not comparable to arrests.

DWI Arrests in Portales

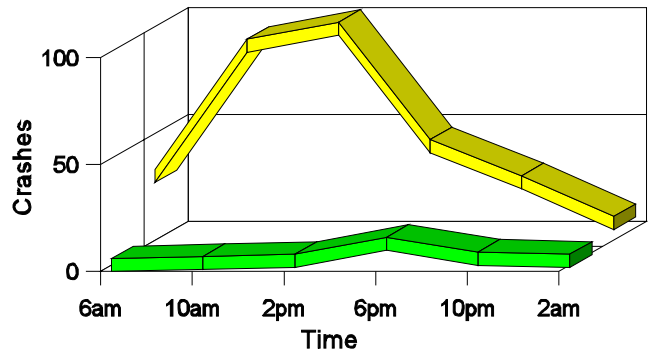
Showing First Arrests and Repeat Offenders



■ Total DWI Arrests
■ First DWI Arrests
■ Repeat DWI Arrests

Crashes in Portales

by Hour and Alcohol Involvement



■ All Crashes
■ Alcohol-involved Crashes

Crashes in Portales by Class, 2004

Class	Crashes				People		
	Total	% of Total	Fatal	% of Fatal	Injury	Killed	Injured
Other vehicle	215	72	0	0	61	0	89
Pedestrian	3	1	0	0	3	0	3
Fixed object	26	9	0	0	2	0	2
Veh. on other roadway	1	0	0	0	1	0	1
Parked vehicle	44	15	0	0	4	0	7
Overturn	5	2	0	0	1	0	1
Other non-collision	2	1	0	0	2	0	2
Pedalcyclist	3	1	0	0	3	0	3
Total	299	100	0	0	77	0	108

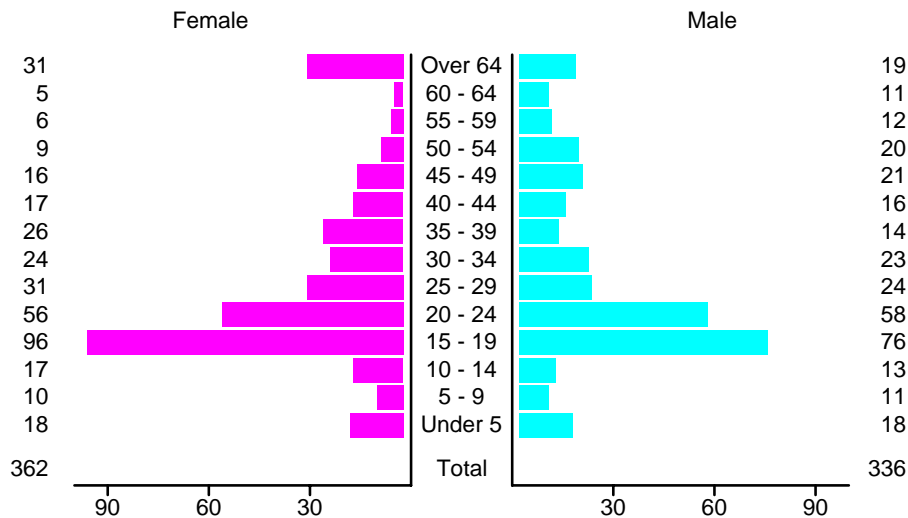
Crashes in Portales by Vehicle Type, 2004

Vehicle Type	Vehicles				People		
	Total	% of Total	Fatal	% of Fatal	Injury	Killed	Injured
Passenger car	289	50	0	0	76	0	58
Pickup	168	29	0	0	39	0	21
Semi	15	3	0	0	4	0	0
Bus	1	0	0	0	0	0	0
Motorcycle	5	1	0	0	4	0	6
Pedalcyclist	3	1	0	0	3	0	3
Pedestrian	3	1	0	0	3	0	3
Van/4 WD	62	11	0	0	20	0	16
Other	3	1	0	0	1	0	0
Unknown	25	4	0	0	2	0	1
Total	574	100	0	0	152	0	108

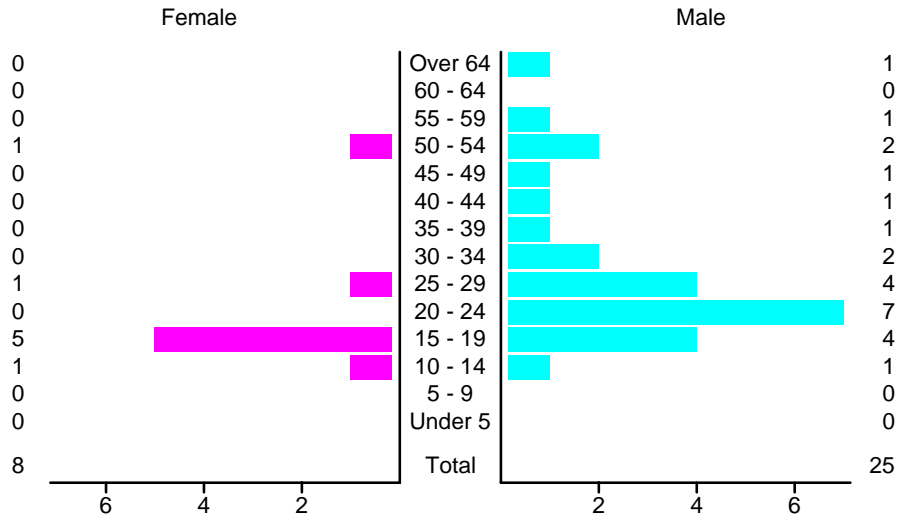
Crashes in Portales by Top Contributing Factor, 2004

Contributing Factor	Crashes				People		
	Total	% of Total	Fatal	% of Fatal	Injury	Killed	Injured
Alcohol involvement	18	6	0	0	7	0	9
Red light running	14	5	0	0	7	0	9
Failing to yield	76	25	0	0	23	0	33
Excessive speed	28	9	0	0	12	0	18
Driving left of center	2	1	0	0	0	0	0
Following too close	40	13	0	0	12	0	16
Improper turning	15	5	0	0	2	0	2
Improper overtaking	2	1	0	0	0	0	0
Improper backing	35	12	0	0	1	0	3
Mechanical defect	4	1	0	0	1	0	2
Driver inattention	47	16	0	0	9	0	13
Other	18	6	0	0	3	0	3
Total	299	100	0	0	77	0	108

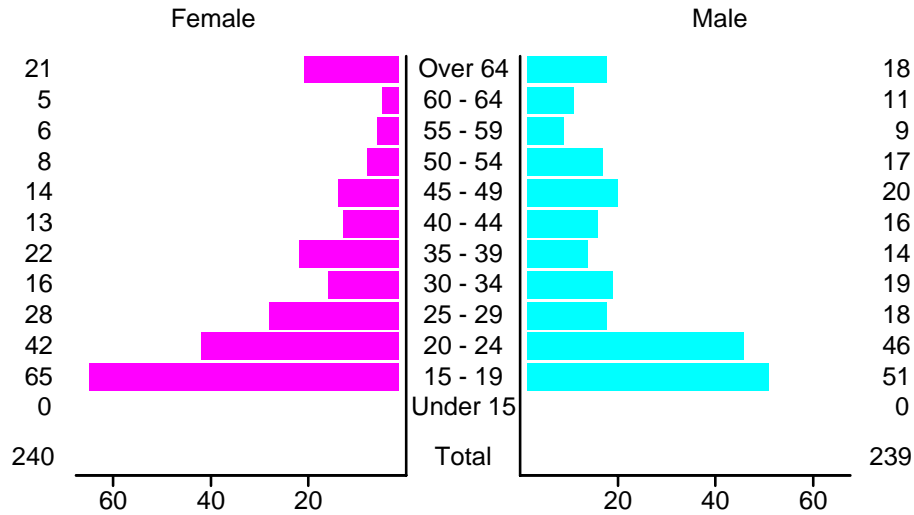
People in Crashes by Age and Sex in Portales, 2004



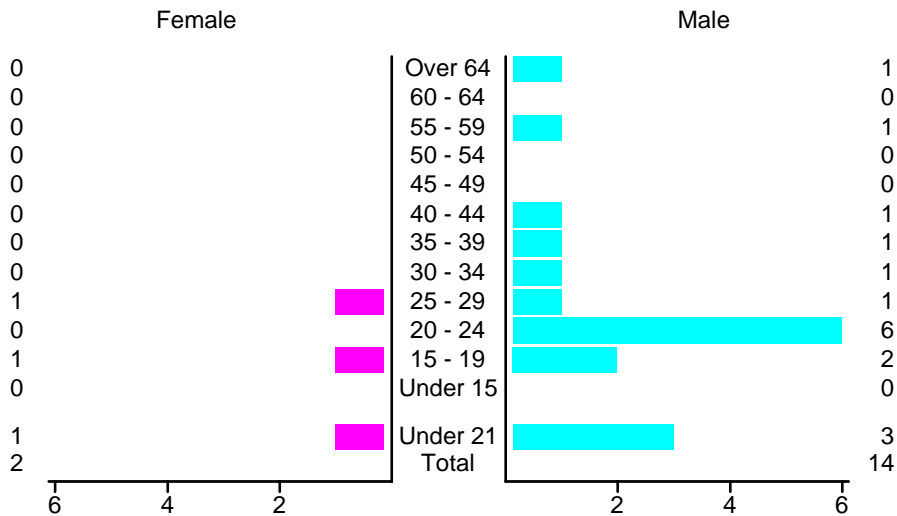
People in Alcohol-Involved Crashes in Portales, 2004 by Age and Sex



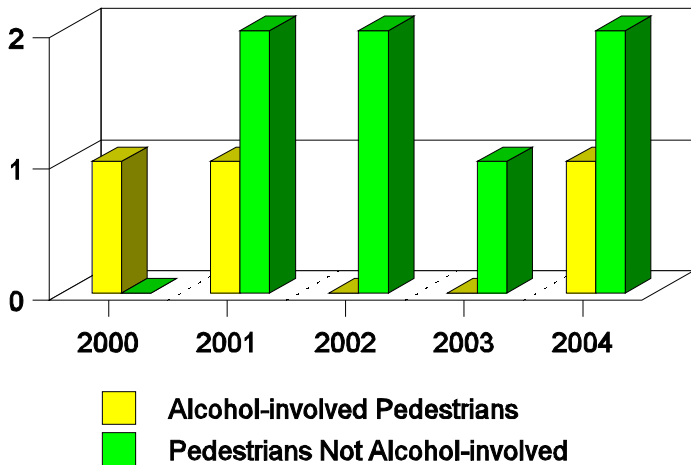
Drivers in Crashes by Age and Sex in Portales, 2004



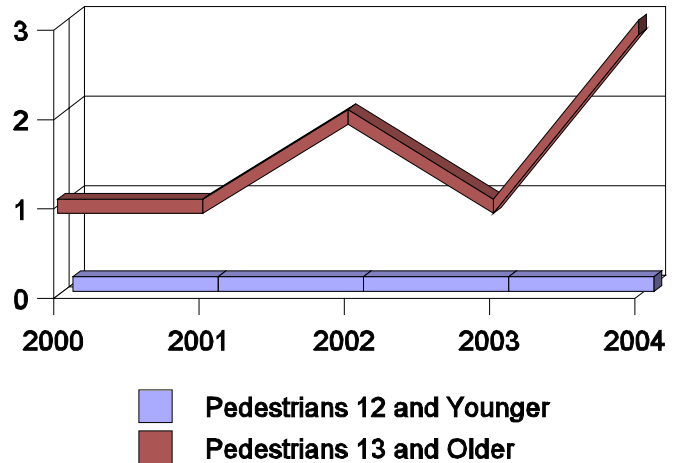
Alcohol-Involved Drivers in Crashes in Portales, 2004 by Age and Sex



**Pedestrian in Crashes in Portales
by Pedestrian Alcohol-involvement, 2000-2004**



**Pedestrian in Crashes in Portales
by Age Group, 2000-2004**



'Teenagers' and Young Adults in Crashes in Portales by Vehicle Type, 2004

Vehicle	'Teenage' Drivers			Young Adult Drivers		
	Total	Fatal	Injury	Total	Fatal	Injury
Passenger car	80	0	23	52	0	12
Pickup	30	0	7	25	0	7
Semi	0	0	0	3	0	1
Motorcycle	0	0	0	1	0	1
Pedalcyclist	1	0	1	0	0	0
Pedestrian	1	0	1	1	0	1
Van/4 WD	7	0	1	7	0	3
Total	119	0	33	89	0	25

'Teenagers' and Young Adults Killed and Injured in Crashes by Year in Portales, 1995-2004

Year	'Teenagers'				Young Adults			
	All Crashes		Alcohol Crashes		All Crashes		Alcohol Crashes	
	Killed	Injured	Killed	Injured	Killed	Injured	Killed	Injured
2004	0	30	0	2	0	11	0	1
2003	0	20	0	0	0	13	0	1
2002	0	19	0	3	1	18	1	2
2001	0	23	0	1	0	12	0	4
2000	0	14	0	1	0	15	0	1
1999	0	20	0	4	0	7	0	0
1998	0	28	0	5	0	13	0	4
1997	0	22	0	1	0	14	0	0
1996	0	21	0	3	0	11	0	1
1995	0	28	0	5	0	20	0	1