

# Sandoval County Report, 2004

## Demographics

In 2004, there were 74,314 licensed drivers in Sandoval County. Of these, there were 37,783 females and 36,531 males. The population in Sandoval County was 102,120. The total number of crashes in 2004 was 1,914, yielding a crash rate of 19 per thousand people (the total number of crashes 1,914 divided by the population 102,120 multiplied by 1,000). The corresponding rate for the state was 27 per thousand people.

## General Crash Information

Since 1995 the number of crashes has shown no consistent pattern. Fatal and injury crashes have also shown no consistent pattern since 1995. Belt usage (as a percentage) has increased from last year, while belt usage in crashes involving visible and incapacitating injuries has also increased from last year.

## Alcohol-related Crash Information

Information about alcohol-involved crashes is included in all sections of this report. Of the 326 people convicted of DWI in Sandoval County in 2004, 61 percent were first-time DWI convictions (number of first convictions 200 divided by the total number of people convicted 326 multiplied by 100). The corresponding percentage for the state was 62.

## Crash Specifics

Crashes involving other vehicles were the most common class, accounting for 66 percent of all crashes. Crashes involving pedestrians, overturns, and other vehicles were the most common crash classes which resulted in fatalities. Passenger cars were the vehicle type most often involved in crashes, accounting for 49 percent of all vehicles in crashes. Pickups accounted for 25 percent of vehicles involved in crashes. Together these two vehicle types comprised 75 percent of the vehicles involved in injury crashes. The three most common top contributing factors were driver inattention, alcohol involvement, and excessive speed. There were 17 fatal crashes in 2004. The most common top contributing factor for the fatal crashes was alcohol involvement.

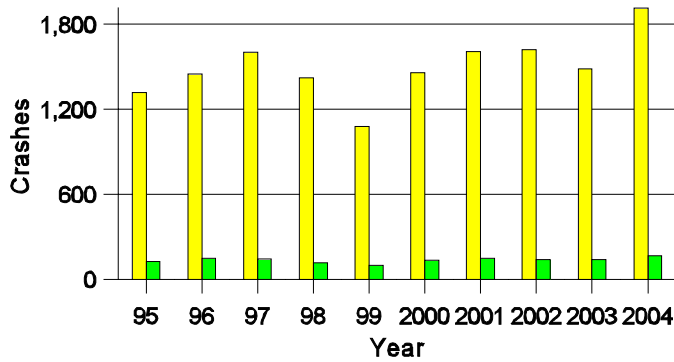
## People in Crashes

Overall, males were 57 percent of drivers in crashes, although they account for only 49 percent of licensed drivers in Sandoval County. There were 17 pedestrians involved in crashes. In 2004, no 'teenagers' and two young adults were killed in crashes in Sandoval County. Statewide 18 percent of alcohol-involved drivers were under 21; in Sandoval County 19 percent were under 21.

**Note:** The 1999 crash file contains 15% fewer crashes than the 1998 file. This may be due to problems implementing the new system after the old system failed, or to under reporting. Care should be used in interpreting differences between 1999 and other years in this report.

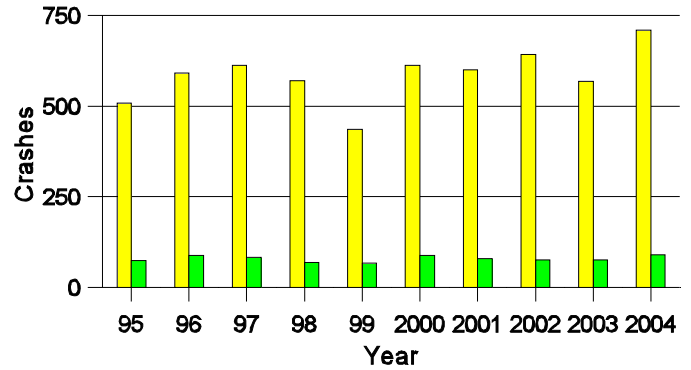
- Location of arrest/conviction was determined by police agency/court location, not driver residence.
- Crashes and drivers were counted by the city of occurrence/residence.
- Population was counted according to the Census definition, using 2004 estimates.
- Young adults are people between the ages of 20 and 24.  
'Teenagers' are people between the ages of 15 and 19.
- Tables only include variable values for which there are data.

**Crashes in Sandoval County  
by Alcohol Involvement**



All Crashes  
 Alcohol-involved Crashes

**Fatal and Injury Crashes in Sandoval County  
by Alcohol Involvement**



All Fatal and Injury Crashes  
 Alcohol-involved Fatal and Injury Crashes

**Passenger Vehicle Seatbelt Usage and Injuries in Sandoval County, 2002-2004**

Injury Level	2004		2003		2002	
	Total	No Belt	Total	No Belt	Total	No Belt
Killed	12	5	12	9	13	8
Incapacitating injury	112	16	91	17	104	23
Visible injury	188	11	167	10	153	25
Complaint of injury	589	11	434	12	549	13
Unhurt	3,511	21	2,482	23	2,893	44
<b>Total</b>	<b>4,412</b>	<b>64</b>	<b>3,186</b>	<b>71</b>	<b>3,712</b>	<b>113</b>

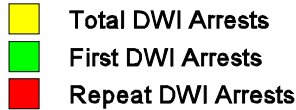
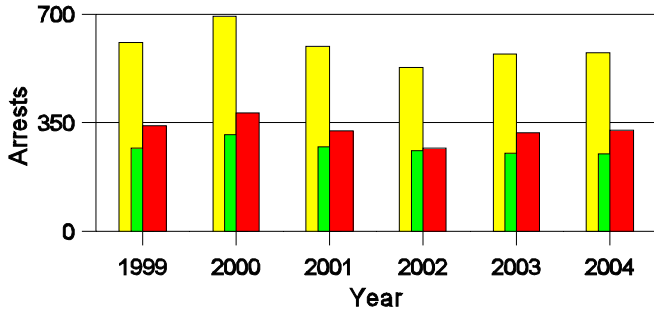
**Lifetime DWI Convictions for Drivers  
Convicted of DWI Violations in Sandoval County, 2004**

Convictions	Since 1999	Since 1980
1st	263	200
2nd	54	75
3rd	7	30
4th	1	12
5th	1	5
6th	0	1
7th	0	2
8th	0	0
9th	0	0
10 or more	0	1
<b>Total</b>	<b>326</b>	<b>326</b>

Convictions are counts of people convicted of DWI by 7/2005 for violations in 2004 in Sandoval County. Convictions are not comparable to arrests.

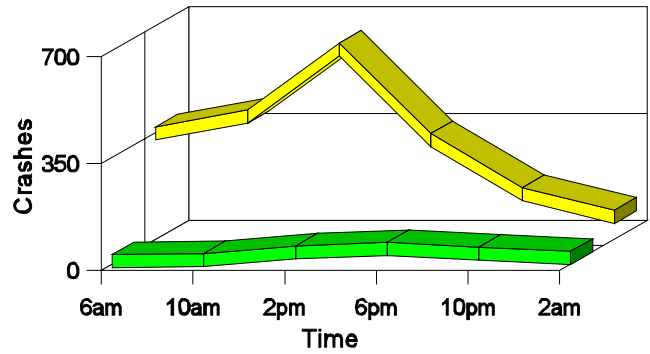
### DWI Arrests in Sandoval County

Showing First Arrests and Repeat Offenders



### Crashes in Sandoval County

by Hour and Alcohol Involvement



### Crashes in Sandoval County by Class, 2004

Class	Crashes				People		
	Total	% of Total	Fatal	% of Fatal	Injury	Killed	Injured
Other vehicle	1,265	66	5	29	484	8	743
Pedestrian	17	1	6	35	9	6	9
Fixed object	261	14	0	0	66	0	91
Parked vehicle	93	5	0	0	10	0	16
Overturn	159	8	5	29	88	6	130
Other non-collision	37	2	1	6	10	1	12
Pedalcyclist	15	1	0	0	13	0	13
Animal	41	2	0	0	8	0	10
Other object	26	1	0	0	5	0	7
<b>Total</b>	<b>1,914</b>	<b>100</b>	<b>17</b>	<b>100</b>	<b>693</b>	<b>21</b>	<b>1,031</b>

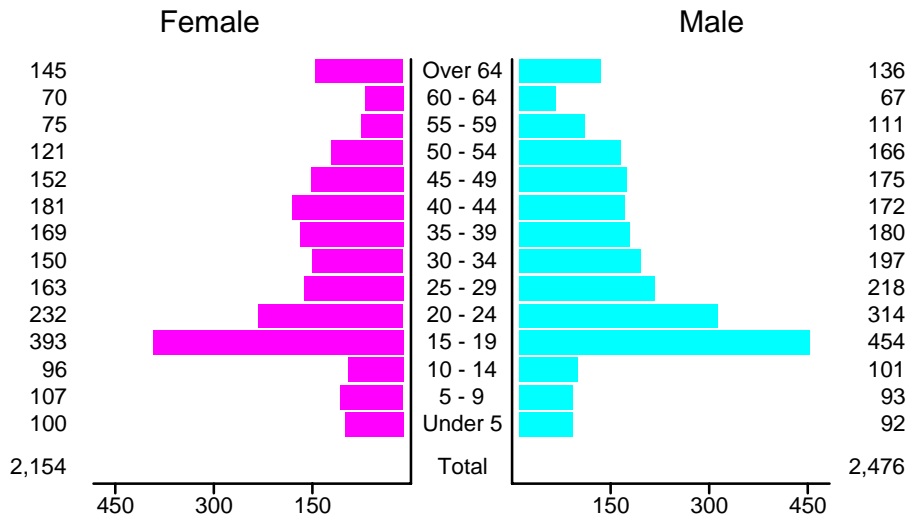
### Crashes in Sandoval County by Vehicle Type, 2004

Vehicle Type	Vehicles				People		
	Total	% of Total	Fatal	% of Fatal	Injury	Killed	Injured
Passenger car	1,717	49	12	40	647	9	560
Pickup	868	25	5	17	336	1	223
Semi	87	3	0	0	22	0	6
Bus	5	0	0	0	1	0	1
Motorcycle	48	1	2	7	33	2	37
Pedalcyclist	17	0	0	0	15	0	15
Pedestrian	17	0	6	20	9	6	9
Van/4 WD	588	17	5	17	219	3	171
Other	20	1	0	0	4	0	2
Unknown	104	3	0	0	22	0	7
<b>Total</b>	<b>3,471</b>	<b>100</b>	<b>30</b>	<b>100</b>	<b>1,308</b>	<b>21</b>	<b>1,031</b>

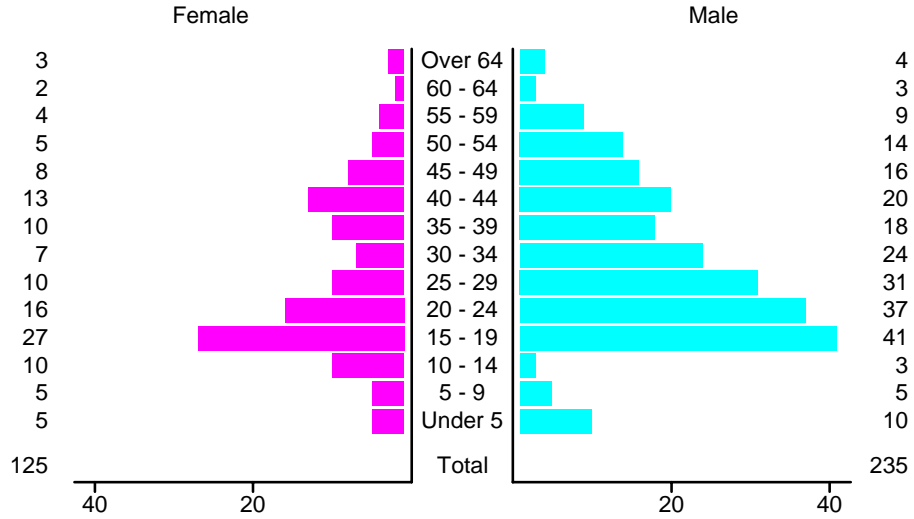
### Crashes in Sandoval County by Top Contributing Factor, 2004

Contributing Factor	Crashes				People		
	Total	% of Total	Fatal	% of Fatal	Injury	Killed	Injured
Alcohol involvement	164	9	10	59	78	11	133
Red light running	78	4	0	0	40	0	66
Failing to yield	256	13	0	0	101	0	152
Excessive speed	265	14	2	12	103	3	162
Driving left of center	36	2	1	6	8	3	11
Following too close	386	20	0	0	158	0	221
Improper turning	66	3	0	0	11	0	13
Improper overtaking	13	1	0	0	3	0	4
Improper backing	62	3	0	0	3	0	3
Mechanical defect	40	2	0	0	13	0	20
Driver inattention	392	20	1	6	138	1	202
Improper driving	1	0	0	0	0	0	0
Other	155	8	3	18	37	3	44
<b>Total</b>	<b>1,914</b>	<b>100</b>	<b>17</b>	<b>100</b>	<b>693</b>	<b>21</b>	<b>1,031</b>

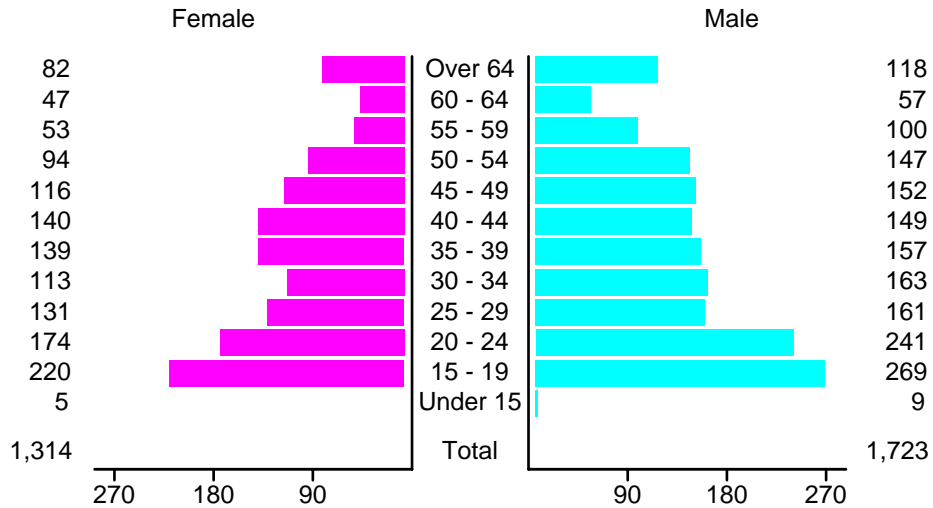
### People in Crashes by Age and Sex in Sandoval County, 2004



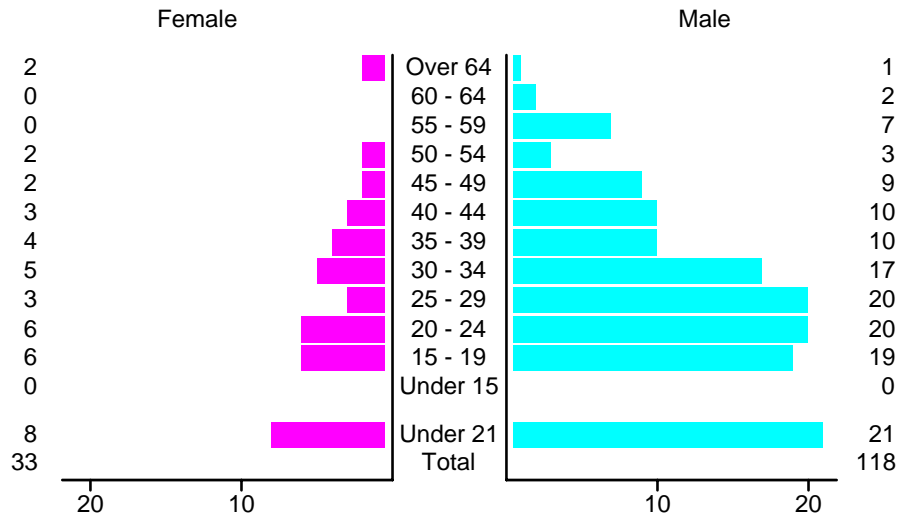
### People in Alcohol-Involved Crashes in Sandoval County, 2004 by Age and Sex



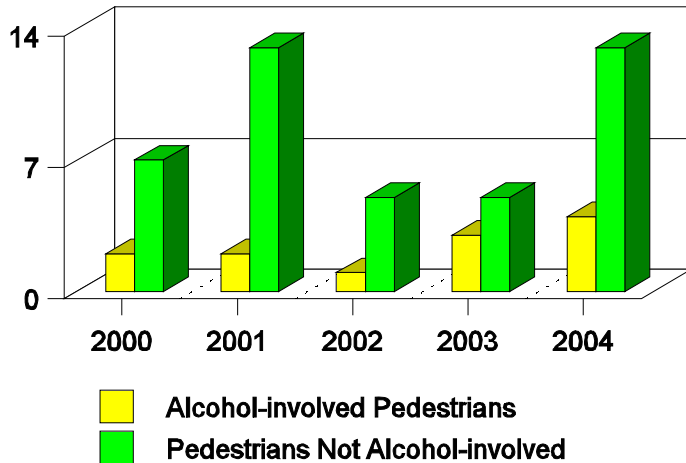
### Drivers in Crashes by Age and Sex in Sandoval County, 2004



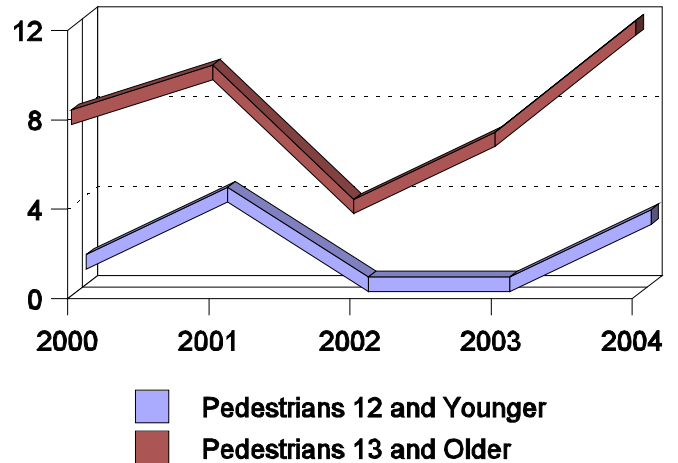
### Alcohol-Involved Drivers in Crashes in Sandoval County, 2004 by Age and Sex



**Pedestrian Crashes in Sandoval County  
by Pedestrian Alcohol-involvement, 2000-2004**



**Pedestrian Crashes in Sandoval County  
by Age Group, 2000-2004**



**'Teenagers' and Young Adults in Crashes in Sandoval County by Vehicle Type, 2004**

Vehicle	'Teenage' Drivers			Young Adult Drivers		
	Total	Fatal	Injury	Total	Fatal	Injury
Passenger car	316	1	126	250	2	98
Pickup	96	0	41	103	3	42
Semi	0	0	0	5	0	0
Motorcycle	5	0	3	5	0	4
Pedalcyclist	3	0	3	1	0	1
Pedestrian	0	0	0	2	1	1
Van/4 WD	71	0	23	49	0	22
Other	0	0	0	1	0	1
Unknown	1	0	0	6	0	2
<b>Total</b>	<b>492</b>	<b>1</b>	<b>196</b>	<b>422</b>	<b>6</b>	<b>171</b>

**'Teenagers' and Young Adults in Crashes in Sandoval County, 1995-2004**

Year	'Teenagers'				Young Adults			
	All Crashes		Alcohol Crashes		All Crashes		Alcohol Crashes	
	Killed	Injured	Killed	Injured	Killed	Injured	Killed	Injured
2004	0	184	0	26	2	124	1	22
2003	3	165	1	10	4	89	1	26
2002	2	166	2	11	3	111	2	27
2001	0	160	0	22	1	88	0	19
2000	4	187	1	24	4	102	2	22
1999	6	122	1	19	4	76	3	14
1998	1	150	0	15	3	104	2	26
1997	4	165	1	21	3	117	2	14
1996	1	188	1	40	7	105	5	32
1995	5	128	3	24	4	82	4	18