

Santa Fe Community Report, 2004

Demographics

In 2004, there were 85,886 licensed drivers in Santa Fe. Of these, there were 43,840 females and 42,046 males. The population of Santa Fe was 68,041. The total number of crashes in 2004 was 3,070, yielding a crash rate of 45 per thousand people (total number of crashes 3,070 divided by total population 68,041 times 1,000). The corresponding rate for the state was 27 per thousand people.

General Crash Information

Since 1995 the number of crashes has shown no consistent pattern. Fatal and injury crashes have also shown no consistent pattern since 1995. Belt usage (as a percentage) has remained about the same as last year, while belt usage in crashes involving visible and incapacitating injuries has decreased from last year. There were no fatalities in the seven intersections with the most crashes in 2004. Of these intersections, four involve Cerrillos Road.

Alcohol-related Crash Information

Information about alcohol-involved crashes is included in all sections of this report. Of the 290 people convicted of DWI in Santa Fe, 64 percent were first-time DWI convictions (number of first convictions 186 divided by the total number of people convicted 290 times 100). The corresponding percent for the state is 62.

Crash Specifics

Crashes involving other vehicles were the most common class, accounting for 81 percent of all crashes. Crashes involving other vehicles, fixed objects, and an overturn resulted in fatalities. Passenger cars were the vehicle type most often involved in crashes, accounting for 53 percent of all vehicles in crashes. Pickups accounted for 20 percent of vehicles involved in crashes. Together these two vehicle types comprised 73 percent of the vehicles involved in injury crashes. The three most common top contributing factors were following too close, driver inattention, and failing to yield. There were five fatal crashes in 2004. The most common top contributing factor for the fatal crashes was alcohol involvement.

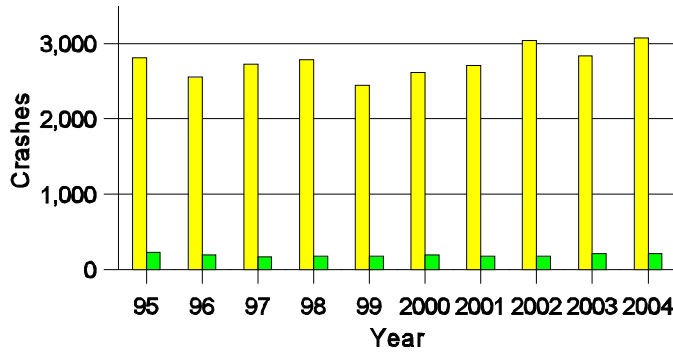
People in Crashes

Overall, males were 55 percent of drivers in crashes, although they account for only 49 percent of licensed drivers in Santa Fe. There were 32 pedestrians in crashes in 2004. In 2004, two 'teenagers' and two young adults were killed in crashes in Santa Fe. Statewide 18 percent of alcohol-involved drivers were under 21; in Santa Fe 14 percent were under 21.

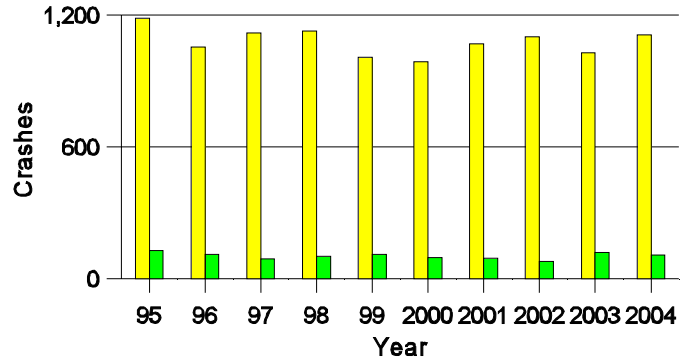
Note: The 1999 crash file contains 15% fewer crashes than the 1998 file. This may be due to problems implementing the new system after the old system failed, or to under reporting. Care should be used in interpreting differences between 1999 and other years in this report.

- Location of arrest/conviction was determined by police agency/court location, not driver residence.
- Crashes and drivers were counted by the city of occurrence/residence.
- Population was counted according to the Census definition.
The city population data is from the most current 2004 estimates.
- Young adults are people between the ages of 20 and 24.
- 'Teenagers' are people between the ages of 15 and 19.
- Tables only include variable values for which there are data.

Crashes in Santa Fe by Alcohol Involvement



Fatal and Injury Crashes in Santa Fe by Alcohol Involvement



Passenger Vehicle Seatbelt Usage and Injuries in Santa Fe, 2002-2004

Injury Level	2004		2003		2002	
	Total	No Belt	Total	No Belt	Total	No Belt
Killed	4	4	3	1	6	3
Incapacitating injury	112	10	107	12	140	24
Visible injury	208	27	207	21	204	25
Complaint of injury	1,153	19	1,080	17	1,153	15
Unhurt	6,298	60	5,734	56	6,350	84
Total	7,775	120	7,131	107	7,853	151

The Seven Intersections in Santa Fe with the Most Crashes, 2004

Intersection	Crashes			People	
	Total	Fatal	Injury	Killed	Injured
Airport Rd @ Cerrillos Rd	57	0	22	0	32
Cerrillos Rd @ Richards Ave	53	0	18	0	40
Cerrillos Rd @ St Francis Dr	57	0	23	0	33
Cerrillos Rd @ St Michaels Dr	55	0	20	0	29
Guadalupe St @ Paseo De Peralta	38	0	13	0	17
San Mateo Rd @ St Francis Dr	36	0	15	0	23
Sawmill Rd @ St Francis Dr	30	0	10	0	21

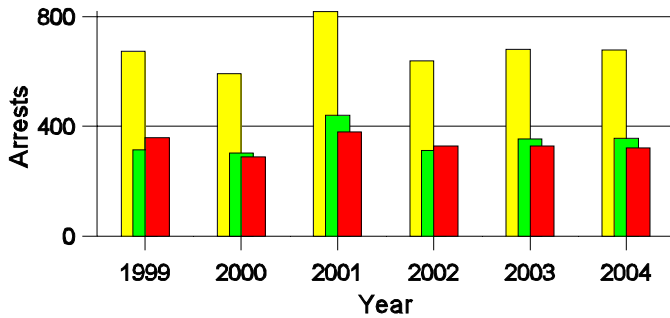
**Lifetime DWI Convictions for Drivers
Convicted of DWI Violations in Santa Fe, 2004**

Convictions	Since 1999	Since 1980
1st	237	186
2nd	44	68
3rd	9	22
4th	0	7
5th	0	4
6th	0	2
7th	0	0
8th	0	0
9th	0	0
10 or more	0	1
Total	290	290

Convictions are counts of people convicted of DWI by 7/2005 for violations in 2004 in Santa Fe.
Convictions are not comparable to arrests.

DWI Arrests in Santa Fe

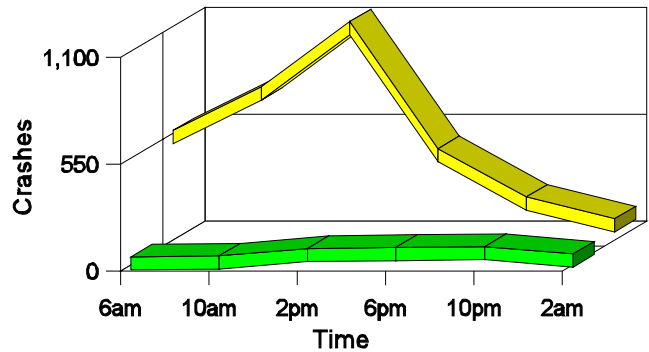
Showing First Arrests and Repeat Offenders



■ Total DWI Arrests
■ First DWI Arrests
■ Repeat DWI Arrests

Crashes in Santa Fe

by Hour and Alcohol Involvement



■ All Crashes
■ Alcohol-involved Crashes

Crashes in Santa Fe by Class, 2004

Class	Crashes				People		
	Total	% of Total	Fatal	% of Fatal	Injury	Killed	Injured
Other vehicle	2,493	81	2	40	895	2	1,383
Pedestrian	30	1	0	0	24	0	24
Fixed object	243	8	2	40	86	3	99
Parked vehicle	159	5	0	0	18	0	20
Overturn	85	3	1	20	45	1	63
Other non-collision	16	1	0	0	9	0	9
Pedalcyclist	31	1	0	0	25	0	26
Animal	8	0	0	0	0	0	0
Other object	5	0	0	0	2	0	2
Total	3,070	100	5	100	1,104	6	1,626

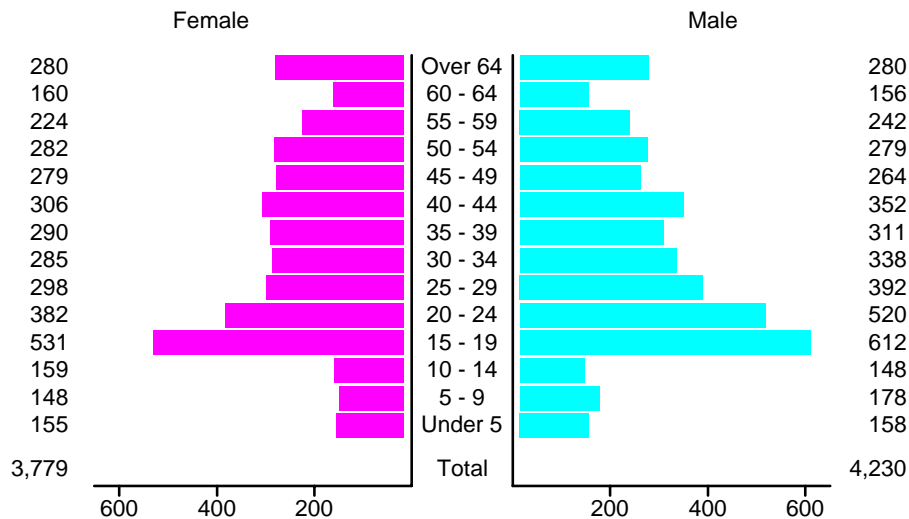
Crashes in Santa Fe by Vehicle Type, 2004

Vehicle Type	Vehicles					People	
	Total	% of Total	Fatal	% of Fatal	Injury	Killed	Injured
Passenger car	3,219	53	4	57	1,223	5	935
Pickup	1,231	20	1	14	431	0	246
Semi	68	1	0	0	15	0	3
Bus	12	0	0	0	2	0	0
Motorcycle	43	1	1	14	34	1	39
Pedalcyclist	32	1	0	0	26	0	26
Pedestrian	32	1	0	0	26	0	25
Van/4 WD	1,252	21	0	0	452	0	343
Other	19	0	1	14	6	0	5
Unknown	182	3	0	0	36	0	4
Total	6,090	100	7	100	2,251	6	1,626

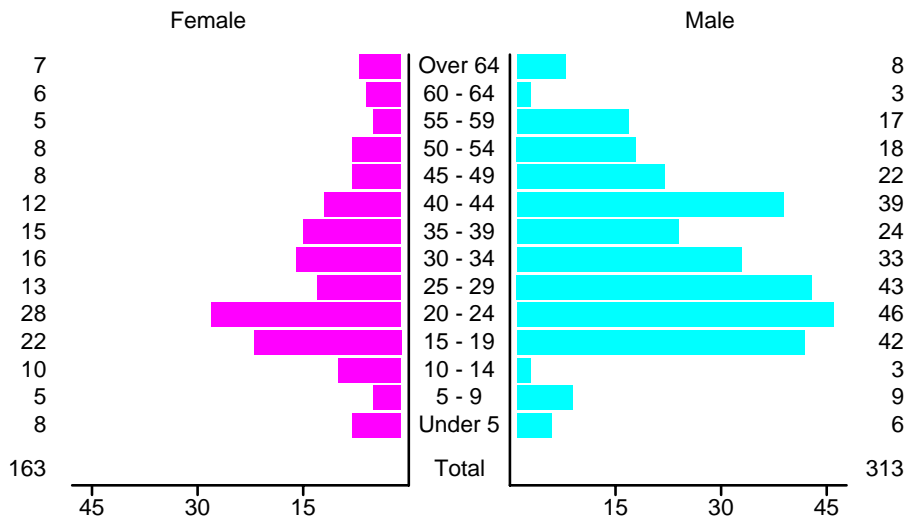
Crashes in Santa Fe by Top Contributing Factor, 2004

Contributing Factor	Crashes					People	
	Total	% of Total	Fatal	% of Fatal	Injury	Killed	Injured
Alcohol involvement	210	7	3	60	105	4	144
Red light running	219	7	1	20	102	1	171
Failing to yield	551	18	0	0	185	0	311
Excessive speed	245	8	1	20	96	1	145
Driving left of center	32	1	0	0	6	0	10
Following too close	777	25	0	0	313	0	459
Improper turning	85	3	0	0	17	0	23
Improper overtaking	47	2	0	0	3	0	6
Improper backing	99	3	0	0	11	0	11
Inop. traffic control	3	0	0	0	2	0	2
Mechanical defect	24	1	0	0	10	0	11
Driver inattention	637	21	0	0	225	0	303
Other	141	5	0	0	29	0	30
Total	3,070	100	5	100	1,104	6	1,626

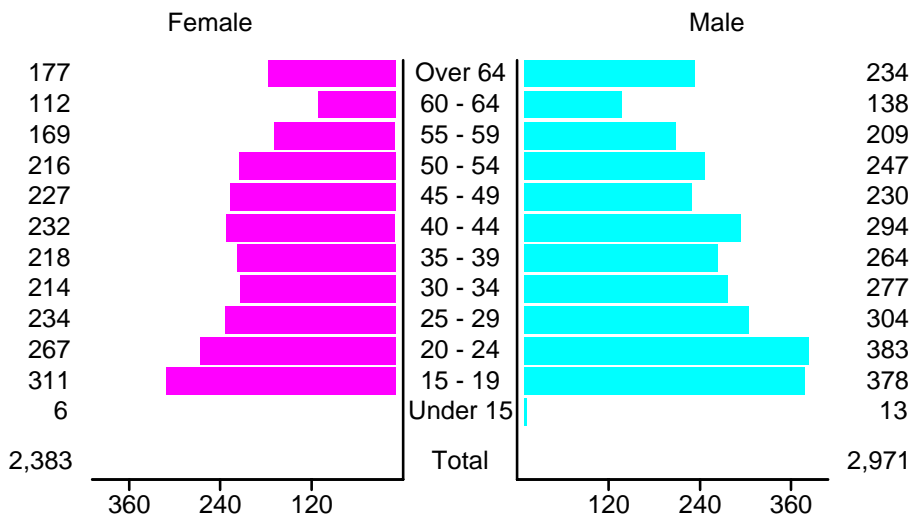
People in Crashes by Age and Sex in Santa Fe, 2004



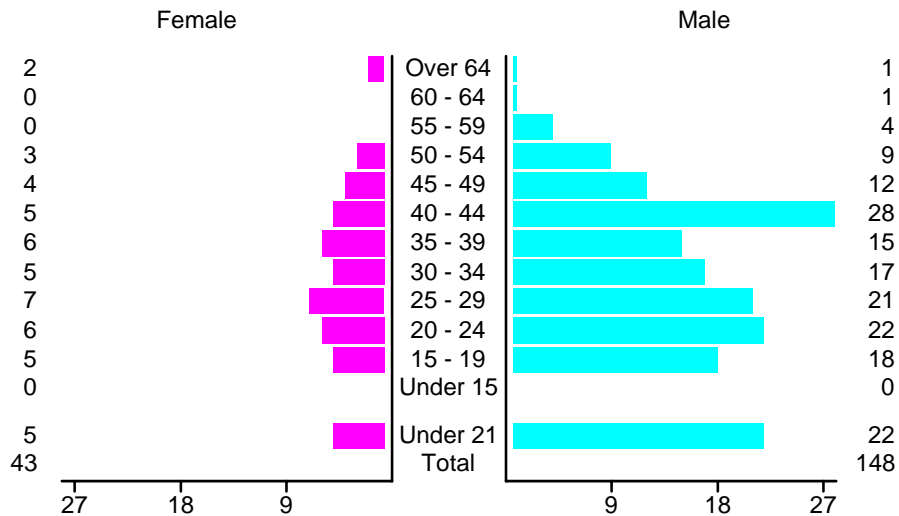
People in Alcohol-Involved Crashes in Santa Fe by Age and Sex, 2004



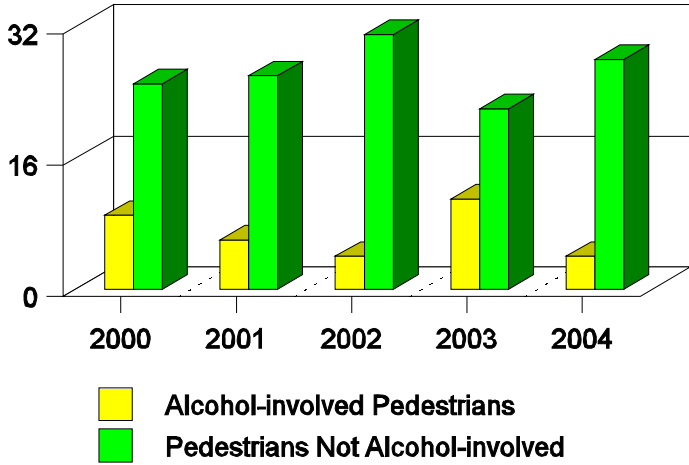
Drivers in Crashes by Age and Sex in Santa Fe, 2004



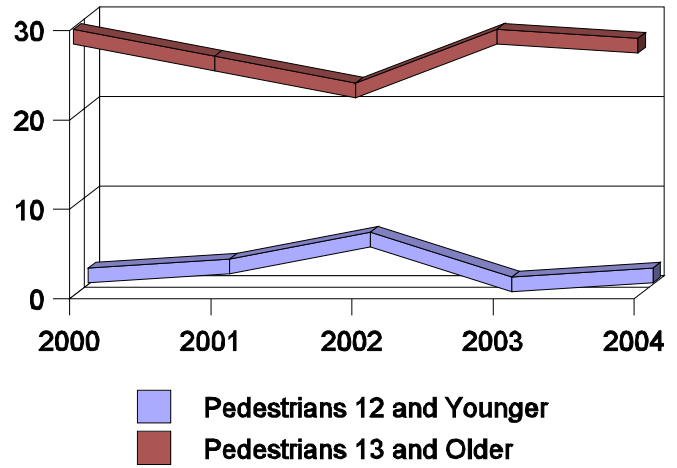
Alcohol-Involved Drivers in Crashes in Santa Fe by Age and Sex, 2004



**Pedestrian in Crashes in Santa Fe
by Pedestrian Alcohol-involvement, 2000-2004**



**Pedestrian in Crashes in Santa Fe
by Age Group, 2000-2004**



'Teenagers' and Young Adults in Crashes in Santa Fe by Vehicle Type, 2004

Vehicle	'Teenage' Drivers			Young Adult Drivers		
	Total	Fatal	Injury	Total	Fatal	Injury
Passenger car	500	1	182	426	1	160
Pickup	91	0	30	98	1	33
Semi	2	0	0	6	0	2
Bus	1	0	0	0	0	0
Motorcycle	2	0	2	5	1	4
Pedalcyclist	1	0	1	4	0	4
Pedestrian	3	0	2	1	0	1
Van/4 WD	90	0	28	113	0	42
Unknown	4	0	0	2	0	1
Total	694	1	245	655	3	247

'Teenagers' and Young Adults Killed and Injured in Crashes by Year in Santa Fe, 1995-2004

Year	'Teenagers'				Young Adults			
	All Crashes		Alcohol Crashes		All Crashes		Alcohol Crashes	
	Killed	Injured	Killed	Injured	Killed	Injured	Killed	Injured
2004	2	186	2	21	2	149	1	18
2003	1	227	1	30	0	160	0	26
2002	1	229	0	9	2	197	1	25
2001	0	231	0	21	0	163	0	30
2000	0	193	0	27	0	161	0	21
1999	0	179	0	18	0	153	0	28
1998	1	240	0	30	0	184	0	29
1997	0	221	0	23	1	157	1	17
1996	4	283	3	21	0	164	0	17
1995	1	278	0	38	1	190	1	30