

Socorro Community Report, 2004

Demographics

In 2004, there were 6,921 licensed drivers in Socorro. Of these, there were 3,304 females and 3,617 males. The population of Socorro was 8,724. The total number of crashes in 2004 was 217 yielding a crash rate of 25 per thousand people (total number of crashes 217 divided by total population 8,724 times 1,000). The corresponding rate for the state was 27 per thousand people.

General Crash Information

Since 2001 the number of crashes has shown an upward trend. Fatal and injury crashes have shown no consistent pattern since 1995. Belt usage (as a percentage) has increased from last year, while belt usage in crashes involving visible and incapacitating injuries has also increased. There were no fatalities in the seven intersections with the most crashes in 2004. Of these intersections, six involve California Street.

Alcohol-related Crash Information

Information about alcohol-involved crashes is included in all sections of this report. Of the 49 people convicted of DWI in Socorro, 49 percent were first-time DWI convictions (number of first convictions 24 divided by the total number of people convicted 49 times 100). The corresponding percent for the state is 62.

Crash Specifics

Crashes involving other vehicles were the most common class, accounting for 58 percent of all crashes. Crashes involving an other vehicle and a pedestrian resulted in fatalities. Passenger cars were the vehicle type most often involved in crashes, accounting for 47 percent of all vehicles in crashes. Pickups accounted for 29 percent of vehicles involved in crashes. Together these two vehicle types comprised 75 percent of the vehicles involved in injury crashes. The three most common top contributing factors were driver inattention, following too close, and failing to yield. There were two fatal crashes in 2004. The top contributing factor for the fatal crashes was alcohol involvement.

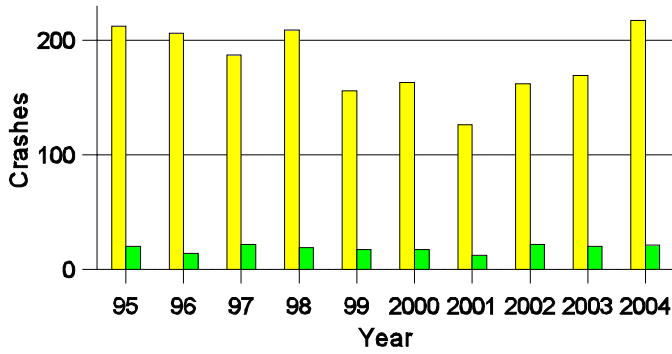
People in Crashes

Overall, males were 53 percent of drivers in crashes, although they account for 52 percent of licensed drivers in Socorro. Eight pedestrians were involved in crashes this year. No 'teenagers' or young adults were killed in crashes in 2004. Statewide 18 percent of alcohol-involved drivers were under 21; in Socorro 11 percent were under 21.

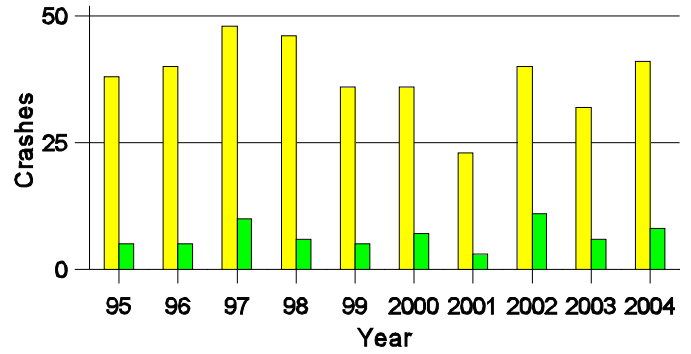
Note: The 1999 crash file contains 15% fewer crashes than the 1998 file. This may be due to problems implementing the new system after the old system failed, or to under reporting. Care should be used in interpreting differences between 1999 and other years in this report.

- Location of arrest/conviction was determined by police agency/court location, not driver residence.
- Crashes and drivers were counted by the city of occurrence/residence.
- Population was counted according to the Census definition. The city population data is from the most current 2004 estimates.
- Young adults are people between the ages of 20 and 24.
- 'Teenagers' are people between the ages of 15 and 19.
- Tables only include variable values for which there are data.

Crashes in Socorro by Alcohol Involvement



Fatal and Injury Crashes in Socorro by Alcohol Involvement



Passenger Vehicle Seatbelt Usage and Injuries in Socorro, 2002-2004

Injury Level	2004		2003		2002	
	Total	No Belt	Total	No Belt	Total	No Belt
Killed	0	0	0	0	0	0
Incapacitating injury	11	0	2	2	4	3
Visible injury	10	3	15	2	15	2
Complaint of injury	27	0	20	1	29	3
Unhurt	381	4	295	3	281	3
Total	429	7	332	8	329	11

The Seven Intersections in Socorro with the Most Crashes, 2004

Intersection	Crashes			People	
	Total	Fatal	Injury	Killed	Injured
6th St @ California St	11	0	3	0	9
Bullock Blvd @ California St	4	0	0	0	0
Bullock Blvd @ El Camino Real St	3	0	0	0	0
California St @ College Ave	7	0	2	0	3
California St @ Faulkner St	4	0	1	0	2
California St @ Francisco De Avondo St	3	0	1	0	1
California St @ Manzanares Ave	3	0	1	0	1

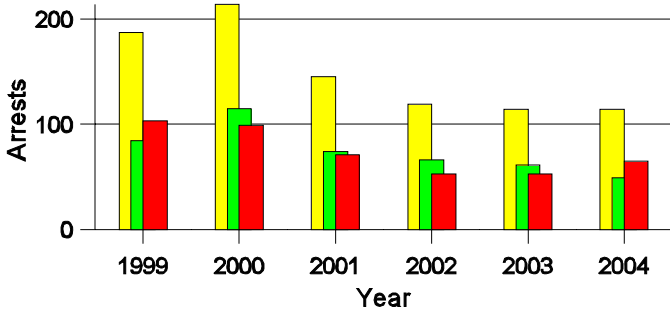
**Lifetime DWI Convictions for Drivers
Convicted of DWI Violations in Socorro, 2004**

Convictions	Since 1999	Since 1980
1st	36	24
2nd	13	10
3rd	0	7
4th	0	7
5th	0	0
6th	0	1
7th	0	0
8th	0	0
9th	0	0
10 or more	0	0
Total	49	49

Convictions are counts of people convicted of DWI by 7/2005 for violations in 2004 in Socorro.
Convictions are not comparable to arrests.

DWI Arrests in Socorro

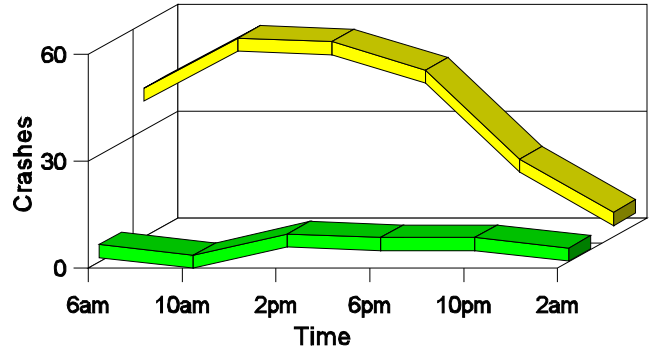
Showing First Arrests and Repeat Offenders



■ Total DWI Arrests
■ First DWI Arrests
■ Repeat DWI Arrests

Crashes in Socorro

by Hour and Alcohol Involvement



■ All Crashes
■ Alcohol-involved Crashes

Crashes in Socorro by Class, 2004

Class	Crashes				People		
	Total	% of Total	Fatal	% of Fatal	Injury	Killed	Injured
Other vehicle	125	58	1	50	22	1	43
Pedestrian	8	4	1	50	6	1	6
Fixed object	35	16	0	0	3	0	5
Parked vehicle	37	17	0	0	2	0	2
Overturn	5	2	0	0	5	0	7
Other non-collision	2	1	0	0	0	0	0
Pedalcyclist	3	1	0	0	1	0	1
Other object	2	1	0	0	0	0	0
Total	217	100	2	100	39	2	64

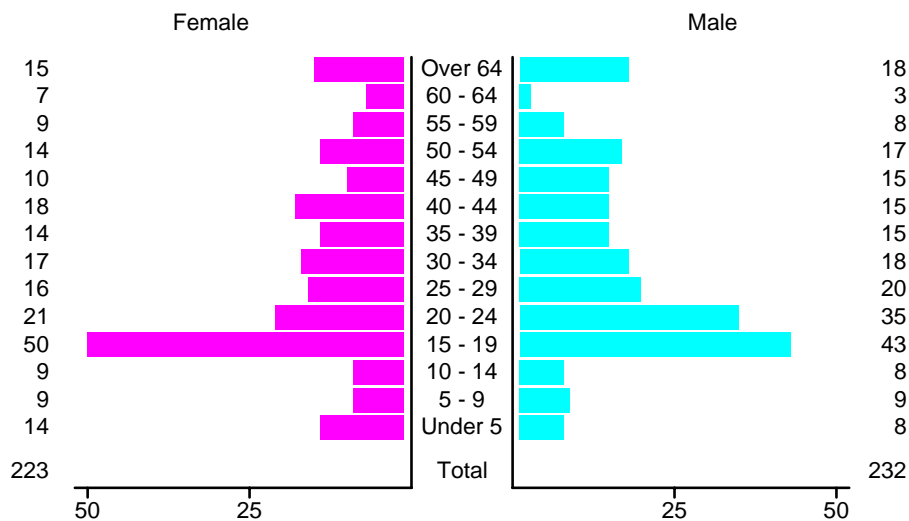
Crashes in Socorro by Vehicle Type, 2004

Vehicle Type	Vehicles					People	
	Total	% of Total	Fatal	% of Fatal	Injury	Killed	Injured
Passenger car	189	47	1	25	43	0	34
Pickup	114	29	1	25	12	0	14
Semi	2	1	0	0	0	0	0
Bus	1	0	0	0	0	0	0
Motorcycle	3	1	0	0	2	0	3
Pedalcyclist	3	1	0	0	1	0	1
Pedestrian	8	2	1	25	6	1	6
Van/4 WD	47	12	1	25	6	1	3
Other	4	1	0	0	1	0	0
Unknown	27	7	0	0	2	0	3
Total	398	100	4	100	73	2	64

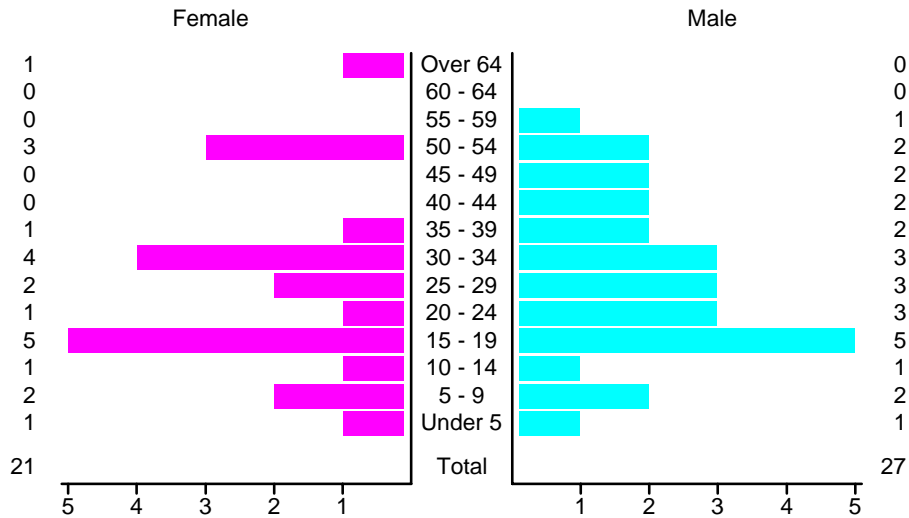
Crashes in Socorro by Top Contributing Factor, 2004

Contributing Factor	Crashes					People	
	Total	% of Total	Fatal	% of Fatal	Injury	Killed	Injured
Alcohol involvement	21	10	2	100	6	2	13
Red light running	10	5	0	0	1	0	2
Failing to yield	30	14	0	0	6	0	9
Excessive speed	24	11	0	0	7	0	14
Driving left of center	2	1	0	0	0	0	0
Following too close	30	14	0	0	8	0	12
Improper turning	9	4	0	0	0	0	0
Improper overtaking	6	3	0	0	0	0	0
Improper backing	27	12	0	0	0	0	0
Inop. traffic control	1	0	0	0	0	0	0
Mechanical defect	4	2	0	0	0	0	0
Driver inattention	40	18	0	0	5	0	5
Other	13	6	0	0	6	0	9
Total	217	100	2	100	39	2	64

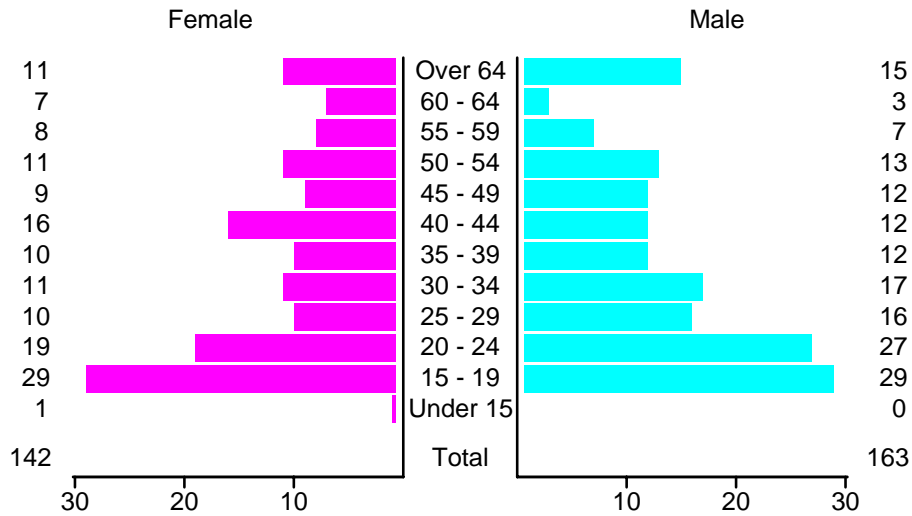
People in Crashes by Age and Sex in Socorro, 2004



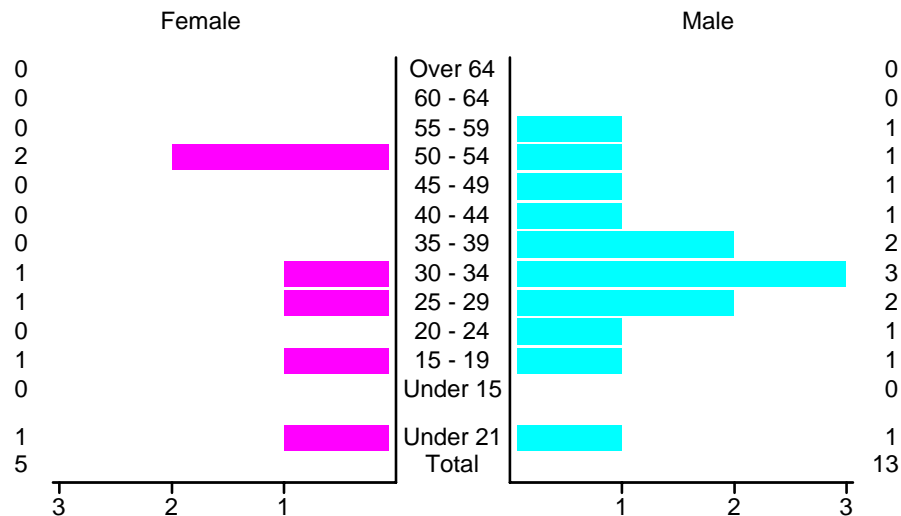
People in Alcohol-Involved Crashes in Socorro by Age and Sex, 2004



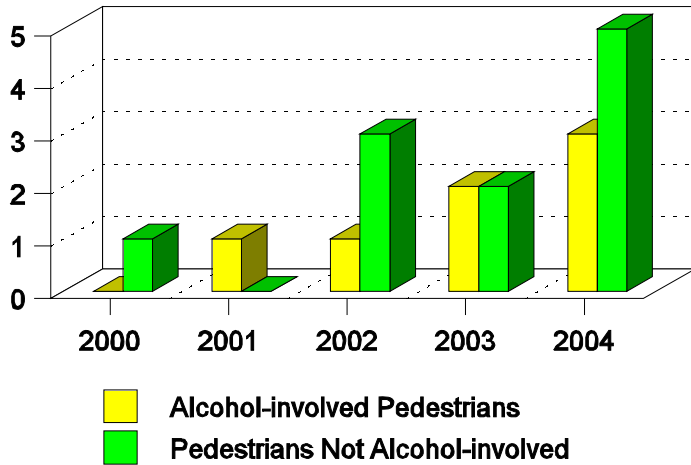
Drivers in Crashes by Age and Sex in Socorro, 2004



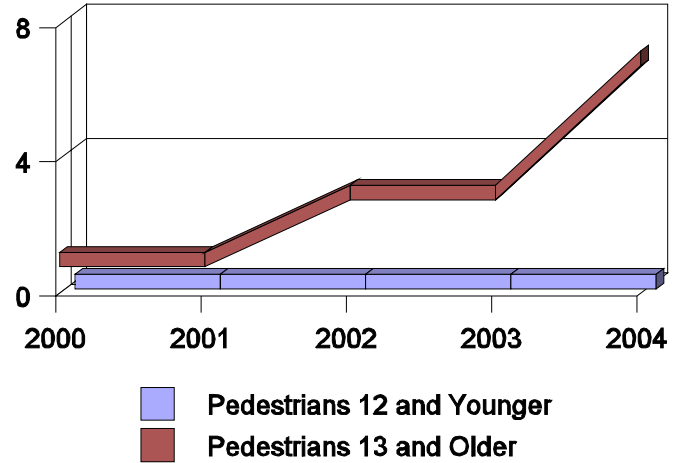
Alcohol-Involved Drivers in Crashes in Socorro by Age and Sex, 2004



**Pedestrian in Crashes in Socorro
by Pedestrian Alcohol-involvement, 2000-2004**



**Pedestrian in Crashes in Socorro
by Age Group, 2000-2004**



'Teenagers' and Young Adults in Crashes in Socorro by Vehicle Type, 2004

Vehicle	'Teenage' Drivers			Young Adult Drivers		
	Total	Fatal	Injury	Total	Fatal	Injury
Passenger car	37	0	5	30	0	10
Pickup	11	0	1	12	0	0
Semi	0	0	0	1	0	0
Motorcycle	2	0	1	0	0	0
Pedestrian	1	0	0	0	0	0
Van/4 WD	8	0	0	3	0	1
Total	59	0	7	46	0	11

'Teenagers' and Young Adults Killed and Injured in Crashes by Year in Socorro, 1995-2004

Year	'Teenagers'				Young Adults			
	All Crashes		Alcohol Crashes		All Crashes		Alcohol Crashes	
	Killed	Injured	Killed	Injured	Killed	Injured	Killed	Injured
2004	0	10	0	0	0	5	0	0
2003	0	9	0	3	1	4	0	1
2002	0	18	0	3	2	10	0	4
2001	0	4	0	0	0	6	0	0
2000	0	10	0	0	0	3	0	0
1999	0	15	0	4	0	5	0	0
1998	1	15	1	7	0	8	0	1
1997	0	14	0	2	0	10	0	4
1996	1	12	1	3	0	10	0	5
1995	0	7	0	0	0	6	0	1