

# Hidalgo County Report, 2005

## Demographics

In 2005, there were 3,512 licensed drivers in Hidalgo County. Of these, there were 1,633 females and 1,879 males. The population in Hidalgo County was 5,139. The total number of crashes in 2005 was 133, yielding a crash rate of 26 per thousand people (the total number of crashes 133 divided by the population 5,139 multiplied by 1,000). The corresponding rate for the state was 25 per thousand people.

## General Crash Information

Since 1996 the number of crashes has shown no consistent pattern. Fatal and injury crashes have shown a downward trend since 2001. Belt usage (as a percentage) has increased from last year, while belt usage in crashes involving visible and incapacitating injuries has also increased.

## Alcohol-related Crash Information

Information about alcohol-involved crashes is included in all sections of this report. Of the 48 people convicted of DWI in Hidalgo County in 2005, 54 percent were first-time DWI convictions (number of first convictions 26 divided by the total number of people convicted 48 multiplied by 100). The corresponding percentage for the state was 61.

## Crash Specifics

Crashes involving overturns were the most common crash class, accounting for 26 percent of all crashes. Crashes involving overturns and a pedestrian were the crash classes which resulted in fatalities. Passenger cars were the vehicle type most often involved in crashes, accounting for 35 percent of all vehicles in crashes. Pickups and semis each accounted for 22 percent of vehicles involved in crashes. Together these three vehicle types comprised 82 percent of the vehicles involved in injury crashes. The three most common top contributing factors were driver inattention, mechanical defect, and excessive speed. There were five fatal crashes in 2005. The most common top contributing factor for the fatal crashes was driver inattention.

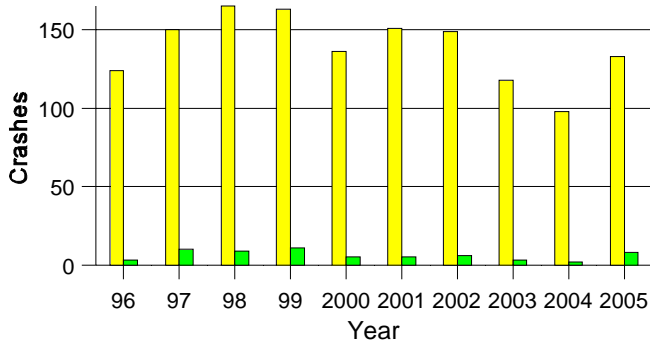
## People in Crashes

Overall, males were 69 percent of drivers in crashes, although they account for only 54 percent of licensed drivers in Hidalgo County. There were two pedestrians involved in crashes. In 2005, no 'teenagers' or young adults were killed in crashes in Hidalgo County. Statewide 17 percent of alcohol-involved drivers were under 21; in Hidalgo County 13 percent were under 21.

**Note:** The 1999 crash file contains 15% fewer crashes than the 1998 file. This may be due to problems implementing the new system after the old system failed, or to under reporting. Care should be used in interpreting differences between 1999 and other years in this report.

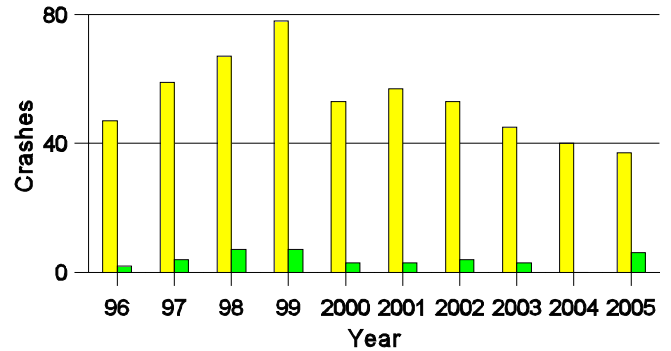
- Location of arrest/conviction was determined by police agency/court location, not driver residence.
- Crashes and drivers were counted by the city of occurrence/residence.
- Population was counted according to the Census definition, using 2005 estimates.
- Young adults are people between the ages of 20 and 24.
- 'Teenagers' are people between the ages of 15 and 19.
- Tables only include variable values for which there are data.

**Crashes in Hidalgo County  
by Alcohol Involvement**



■ All Crashes  
■ Alcohol-involved Crashes

**Fatal and Injury Crashes in Hidalgo County  
by Alcohol Involvement**



■ All Fatal and Injury Crashes  
■ Alcohol-involved Fatal and Injury Crashes

**Passenger Vehicle Seatbelt Usage and Injuries in Hidalgo County, 2003-2005**

Injury Level	2005		2004		2003	
	Total	No Belt	Total	No Belt	Total	No Belt
Killed	4	3	3	2	2	0
Incapacitating injury	27	6	16	3	10	2
Visible injury	13	0	26	4	33	2
Complaint of injury	23	0	13	0	20	2
Unhurt	163	2	133	4	150	9
<b>Total</b>	<b>230</b>	<b>11</b>	<b>191</b>	<b>13</b>	<b>215</b>	<b>15</b>

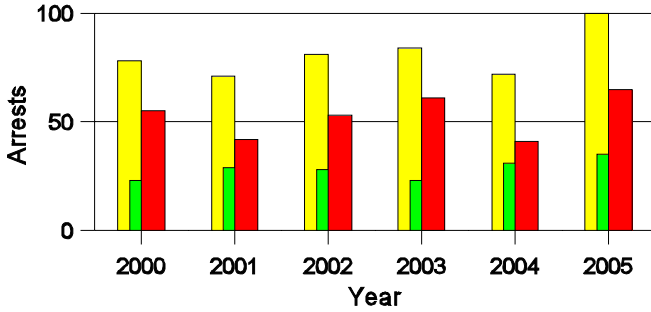
**Lifetime DWI Convictions for Drivers  
Convicted of DWI Violations in Hidalgo County, 2005**

Convictions	Since 2000	Since 1981
1st	38	26
2nd	9	9
3rd	1	9
4th	0	1
5th	0	2
6th	0	1
7th	0	0
8th	0	0
9th	0	0
10 or more	0	0
<b>Total</b>	<b>48</b>	<b>48</b>

Convictions are counts of people convicted of DWI by 7/2006 for violations in 2005 in Hidalgo County. Convictions are not comparable to arrests.

### DWI Arrests in Hidalgo County

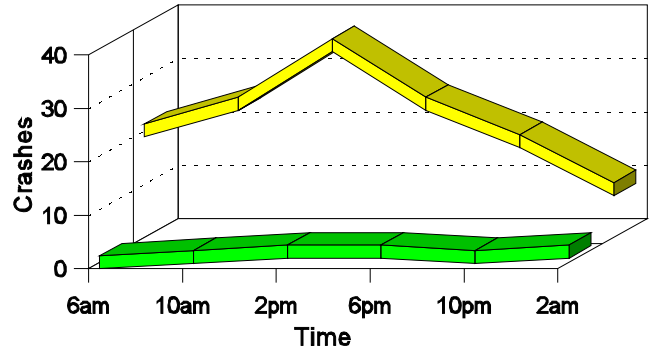
Showing First Arrests and Repeat Offenders



- Total DWI Arrests
- First DWI Arrests
- Repeat DWI Arrests

### Crashes in Hidalgo County

by Hour and Alcohol Involvement



- All Crashes
- Alcohol-involved Crashes

### Crashes in Hidalgo County by Class, 2005

Class	Crashes					People	
	Total	% of Total	Fatal	% of Fatal	Injury	Killed	Injured
Other vehicle	28	21	0	0	7	0	15
Pedestrian	1	1	1	20	0	1	1
Fixed object	26	20	0	0	7	0	10
Veh. on other roadway	1	1	0	0	0	0	0
Parked vehicle	8	6	0	0	3	0	4
Overturn	34	26	4	80	15	4	38
Other non-collision	11	8	0	0	0	0	0
Animal	19	14	0	0	0	0	0
Other object	5	4	0	0	0	0	0
<b>Total</b>	<b>133</b>	<b>100</b>	<b>5</b>	<b>100</b>	<b>32</b>	<b>5</b>	<b>68</b>

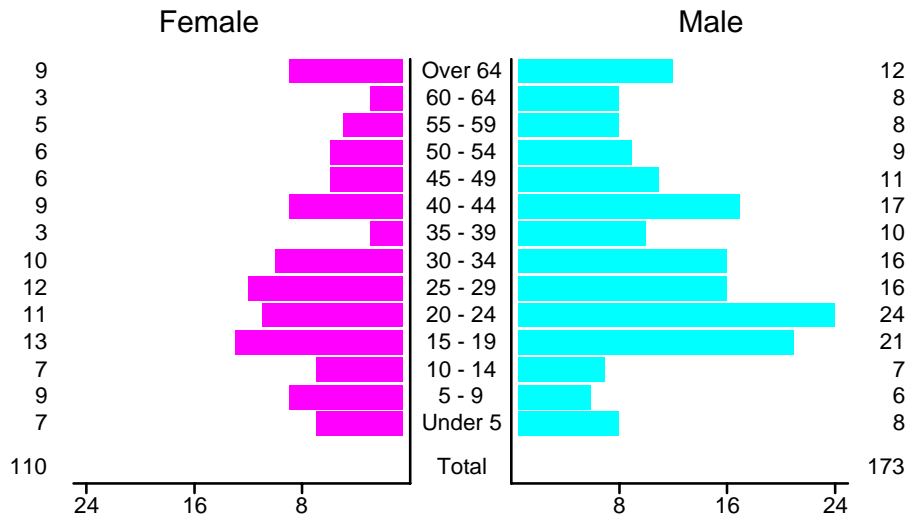
### Crashes in Hidalgo County by Vehicle Type, 2005

Vehicle Type	Vehicles					People	
	Total	% of Total	Fatal	% of Fatal	Injury	Killed	Injured
Passenger car	61	35	1	14	17	1	27
Pickup	38	22	2	29	12	1	20
Semi	39	22	0	0	7	0	2
Bus	1	1	0	0	0	0	0
Pedestrian	2	1	2	29	0	1	1
Van/4 WD	29	17	2	29	8	2	18
Other	1	1	0	0	0	0	0
Unknown	4	2	0	0	0	0	0
<b>Total</b>	<b>175</b>	<b>100</b>	<b>7</b>	<b>100</b>	<b>44</b>	<b>5</b>	<b>68</b>

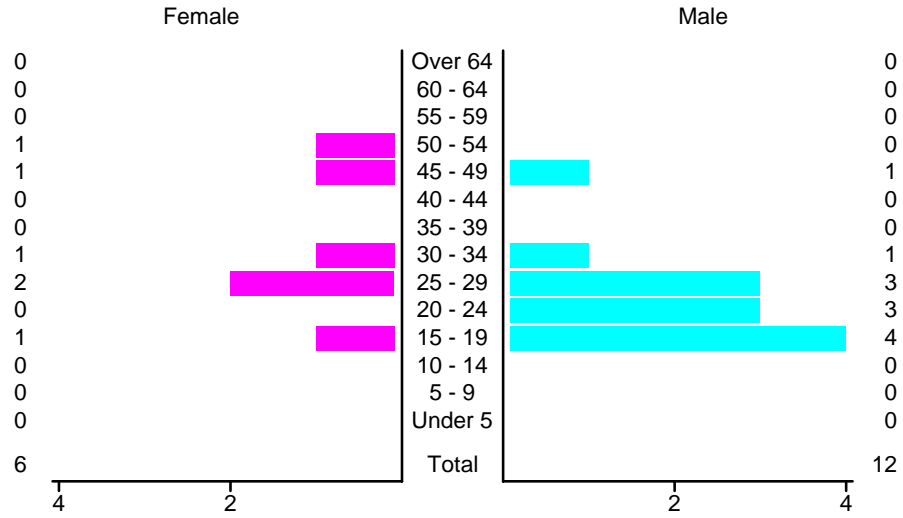
### Crashes in Hidalgo County by Top Contributing Factor, 2005

Contributing Factor	Crashes				People		
	Total	% of Total	Fatal	% of Fatal	Injury	Killed	Injured
Alcohol involvement	8	6	1	20	5	1	9
Red light running	2	2	0	0	1	0	1
Failing to yield	6	5	0	0	2	0	5
Excessive speed	12	9	1	20	6	1	13
Driving left of center	7	5	0	0	1	0	4
Following too close	2	2	0	0	1	0	3
Improper turning	3	2	0	0	0	0	0
Improper overtaking	1	1	0	0	0	0	0
Improper backing	3	2	0	0	0	0	0
Mechanical defect	14	11	0	0	2	0	4
Driver inattention	40	30	3	60	10	3	23
Other	35	26	0	0	4	0	6
<b>Total</b>	<b>133</b>	<b>100</b>	<b>5</b>	<b>100</b>	<b>32</b>	<b>5</b>	<b>68</b>

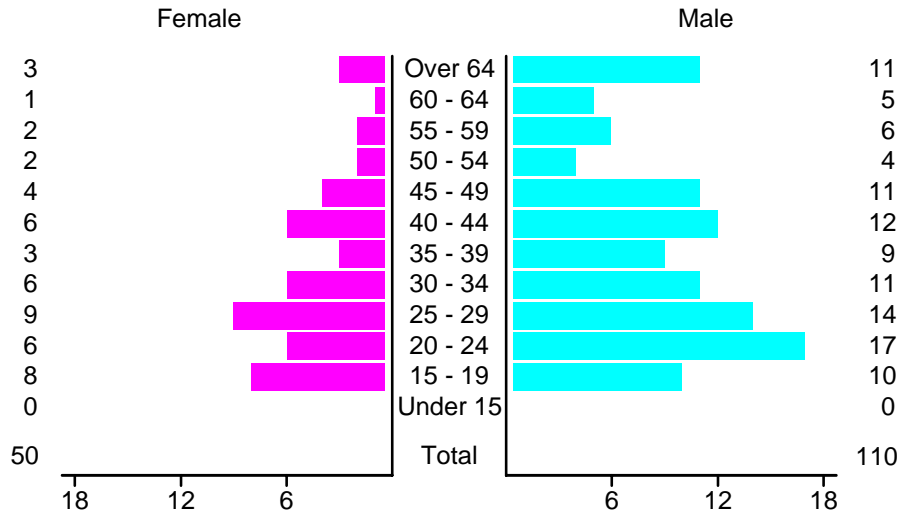
### People in Crashes by Age and Sex in Hidalgo County, 2005



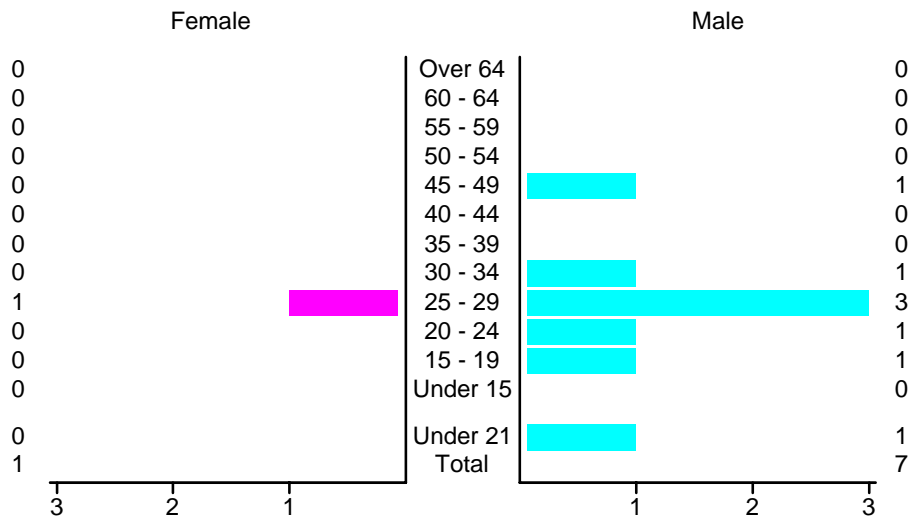
### People in Alcohol-Involved Crashes in Hidalgo County, 2005 by Age and Sex



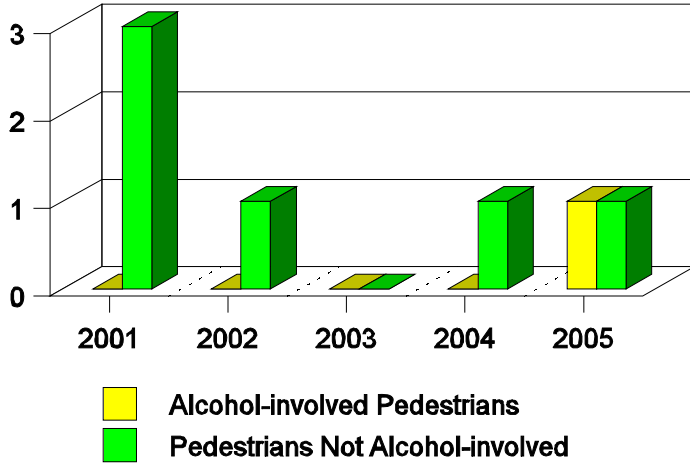
### Drivers in Crashes by Age and Sex in Hidalgo County, 2005



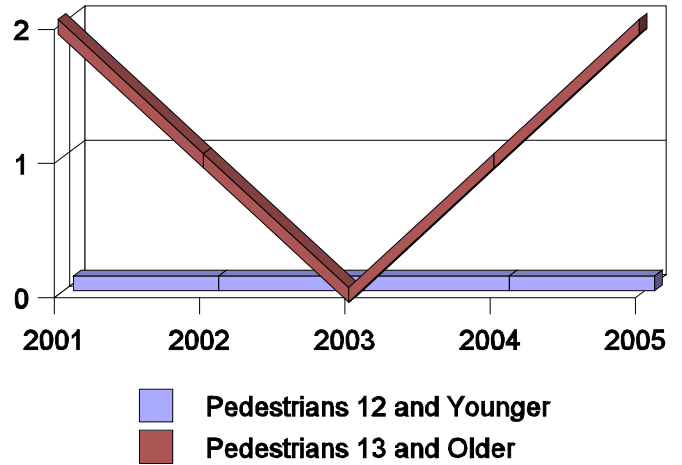
### Alcohol-involved Drivers in Crashes in Hidalgo County, 2005 by Age and Sex



**Pedestrian Crashes in Hidalgo County  
by Pedestrian Alcohol Involvement**



**Pedestrian Crashes in Hidalgo County  
by Age Group**



**'Teenagers' and Young Adults in Crashes in Hidalgo County by Vehicle Type, 2005**

Vehicle	'Teenage' Drivers			Young Adult Drivers		
	Total	Fatal	Injury	Total	Fatal	Injury
Passenger car	15	0	3	9	0	4
Pickup	3	0	1	11	0	3
Semi	0	0	0	1	0	0
Van/4 WD	0	0	0	2	0	1
<b>Total</b>	<b>18</b>	<b>0</b>	<b>4</b>	<b>23</b>	<b>0</b>	<b>8</b>

**'Teenagers' and Young Adults in Crashes in Hidalgo County, 1996-2005**

Year	'Teenagers'				Young Adults			
	All Crashes		Alcohol Crashes		All Crashes		Alcohol Crashes	
	Killed	Injured	Killed	Injured	Killed	Injured	Killed	Injured
2005	0	5	0	1	0	12	0	2
2004	0	8	0	0	0	10	0	0
2003	0	9	0	1	2	10	1	0
2002	0	13	0	0	0	4	0	0
2001	0	9	0	2	1	10	0	1
2000	0	13	0	2	3	16	0	2
1999	0	14	0	1	0	16	0	5
1998	0	10	0	0	1	11	0	1
1997	1	9	0	2	1	14	0	2
1996	0	16	0	1	0	13	0	1