

Mora County Report, 2005

Demographics

In 2005, there were 3,694 licensed drivers in Mora County. Of these, there were 1,782 females and 1,912 males. The population in Mora County was 5,107. The total number of crashes in 2005 was 84 yielding a crash rate of 16 per thousand people (total number of crashes 84 divided by the population 5,107 multiplied by 1,000). The corresponding rate for the state was 25 per thousand people.

General Crash Information

Since 2002 the number of crashes has shown a decreasing trend. Fatal and injury crashes have also shown a decreasing trend since 2002. Belt usage (as a percentage) has increased from last year, while belt usage in crashes involving visible and incapacitating injuries has also increased.

Alcohol-related Crash Information

Information about alcohol-involved crashes is included in all sections of this report. Of the 17 people convicted of DWI in Mora County in 2005, 29 percent were first-time DWI convictions (number of first convictions five divided by the total number of people convicted 17 multiplied by 100). The corresponding percentage for the state was 61.

Crash Specifics

Crashes involving other vehicles were the most common class accounting for 26 percent of all crashes. Crashes involving an overturn, a pedestrian, a fixed object, and an other non-collision resulted in fatalities. Passenger cars were the vehicle type most often involved in crashes, accounting for 47 percent of all vehicles in crashes. Pickups accounted for 26 percent of vehicles involved in crashes. Together these two vehicle types comprised 72 percent of the vehicles involved in injury crashes. The three most common top contributing factors were excessive speed, driver inattention, and alcohol involvement. There were four fatal crashes in 2005. The most common top contributing factor for the fatal crashes was alcohol involvement.

People in Crashes

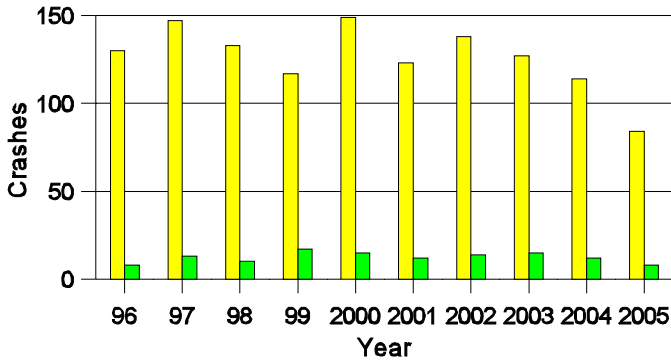
Overall, males were 58 percent of drivers in crashes, although they account for only 52 percent of licensed drivers in Mora County. There was one pedestrian involved in a crash. In 2005, no 'teenagers' or young adults were killed in crashes in Mora County. Statewide 17 percent of alcohol-involved drivers were under 21; in Mora County 25 percent were under 21.

Note: The 1999 crash file contains 15% fewer crashes than the 1998 file. This may be due to problems implementing the new system after the old system failed, or to under reporting. Care should be used in interpreting differences between 1999 and other years in this report.

- Location of arrest/conviction was determined by police agency/court location, not driver residence.
- Crashes and drivers were counted by the city of occurrence/residence.
- Population was counted according to the Census definition, using 2005 estimates.
- Young adults are people between the ages of 20 and 24.
- 'Teenagers' are people between the ages of 15 and 19.
- Tables only include variable values for which there are data.

Crashes in Mora County

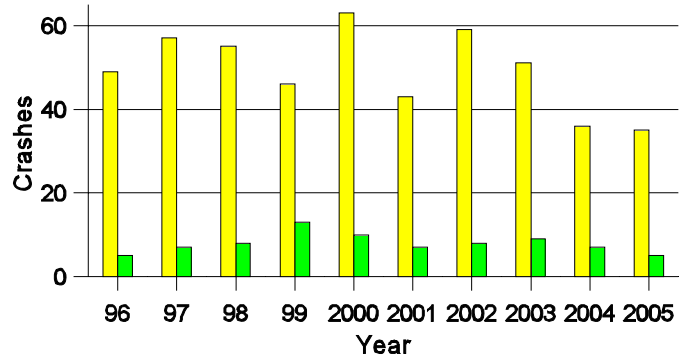
by Alcohol Involvement



All Crashes
 Alcohol-involved Crashes

Fatal and Injury Crashes in Mora County

by Alcohol Involvement



All Fatal and Injury Crashes
 Alcohol-involved Fatal and Injury Crashes

Passenger Vehicle Seatbelt Usage and Injuries in Mora County, 2003-2005

Injury Level	2005		2004		2003	
	Total	No Belt	Total	No Belt	Total	No Belt
Killed	3	1	8	6	3	1
Incapacitating injury	2	0	7	4	11	5
Visible injury	14	0	19	2	27	4
Complaint of injury	24	1	14	1	23	1
Unhurt	85	2	149	2	136	0
Total	128	4	197	15	200	11

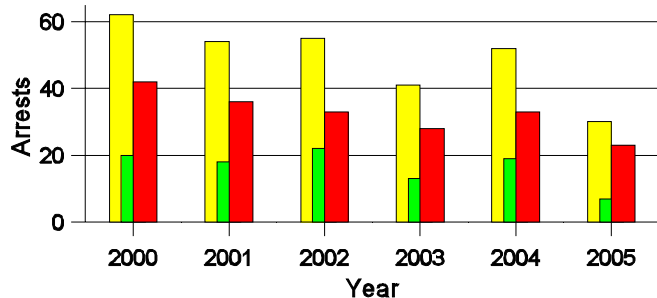
Lifetime DWI Convictions for Drivers Convicted of DWI Violations in Mora County, 2005

Convictions	Since 2000	Since 1981
1st	9	5
2nd	5	3
3rd	3	2
4th	0	4
5th	0	2
6th	0	0
7th	0	1
8th	0	0
9th	0	0
10 or more	0	0
Total	17	17

Convictions are counts of people convicted of DWI by 7/2006 for violations in 2005 in Mora County. Convictions are not comparable to arrests.

DWI Arrests in Mora County

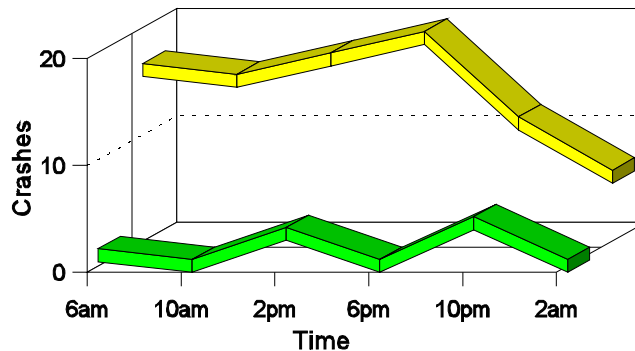
Showing First Arrests and Repeat Offenders



- Total DWI Arrests
- First DWI Arrests
- Repeat DWI Arrests

Crashes in Mora County

by Hour and Alcohol Involvement



- All Crashes
- Alcohol-involved Crashes

Crashes in Mora County by Class, 2005

Class	Crashes					People	
	Total	% of Total	Fatal	% of Fatal	Injury	Killed	Injured
Other vehicle	22	26	0	0	12	0	22
Pedestrian	1	1	1	25	0	1	0
Fixed object	21	25	1	25	7	2	8
Parked vehicle	3	4	0	0	0	0	0
Overturn	18	21	1	25	9	1	11
Other non-collision	5	6	1	25	1	1	1
Animal	14	17	0	0	2	0	2
Total	84	100	4	100	31	5	44

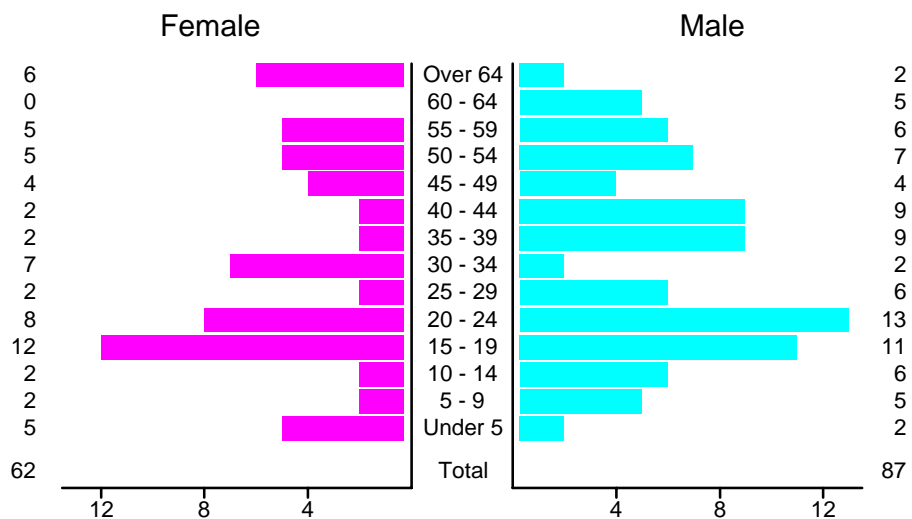
Crashes in Mora County by Vehicle Type, 2005

Vehicle Type	Vehicles					People	
	Total	% of Total	Fatal	% of Fatal	Injury	Killed	Injured
Passenger car	52	47	0	0	21	0	25
Pickup	29	26	2	40	10	1	8
Semi	3	3	0	0	1	0	1
Motorcycle	1	1	1	20	0	1	0
Pedestrian	1	1	1	20	0	1	0
Van/4 WD	19	17	1	20	9	2	9
Unknown	5	5	0	0	2	0	1
Total	110	100	5	100	43	5	44

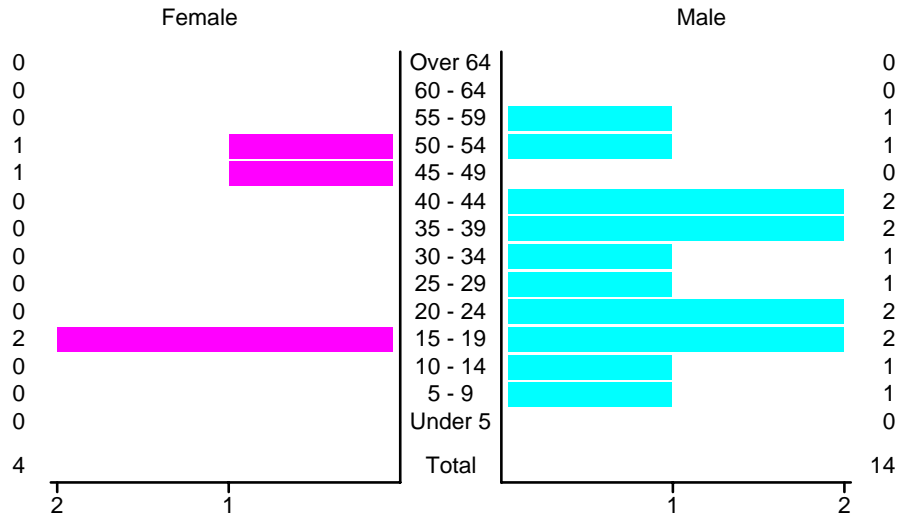
Crashes in Mora County by Top Contributing Factor, 2005

Contributing Factor	Crashes				People		
	Total	% of Total	Fatal	% of Fatal	Injury	Killed	Injured
Alcohol involvement	8	10	2	50	3	2	7
Red light running	1	1	0	0	0	0	0
Failing to yield	3	4	0	0	2	0	2
Excessive speed	21	25	1	25	8	1	10
Driving left of center	5	6	0	0	2	0	2
Following too close	5	6	0	0	3	0	7
Mechanical defect	5	6	0	0	2	0	3
Driver inattention	17	20	1	25	8	2	10
Other	19	23	0	0	3	0	3
Total	84	100	4	100	31	5	44

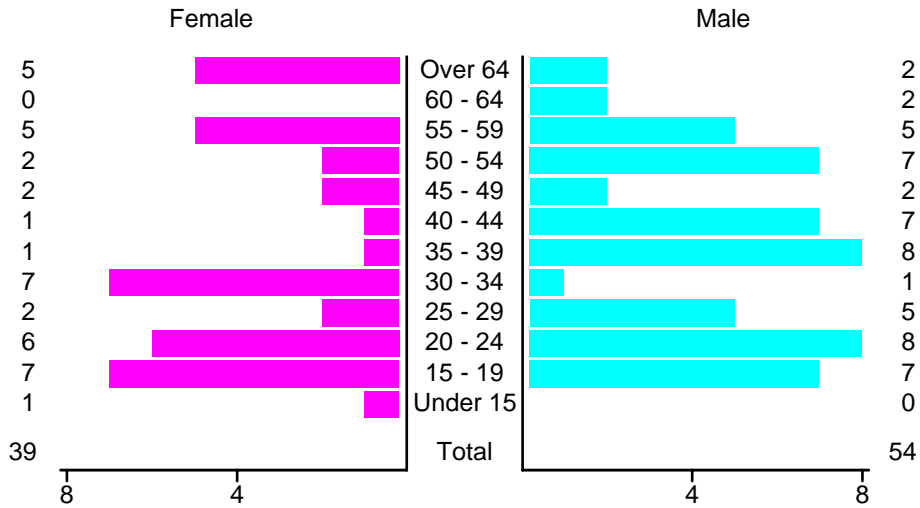
People in Crashes by Age and Sex in Mora County, 2005



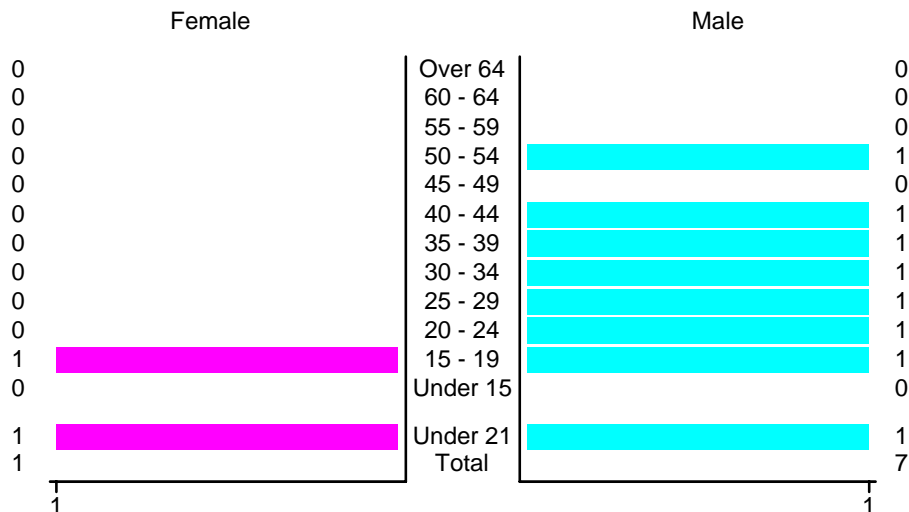
People in Alcohol-Involved Crashes in Mora County, 2005 by Age and Sex



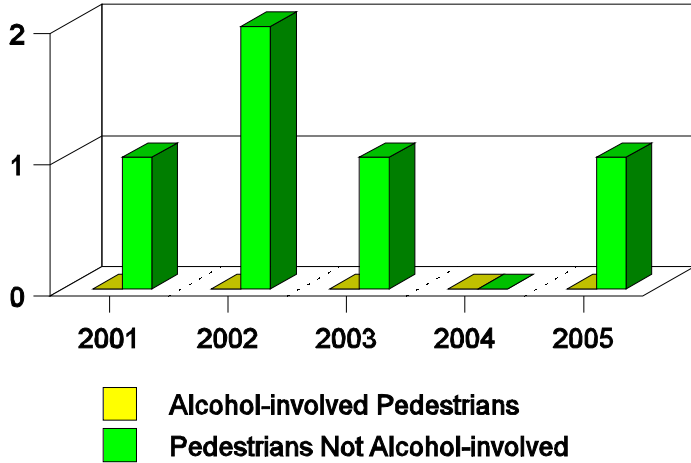
Drivers in Crashes by Age and Sex in Mora County, 2005



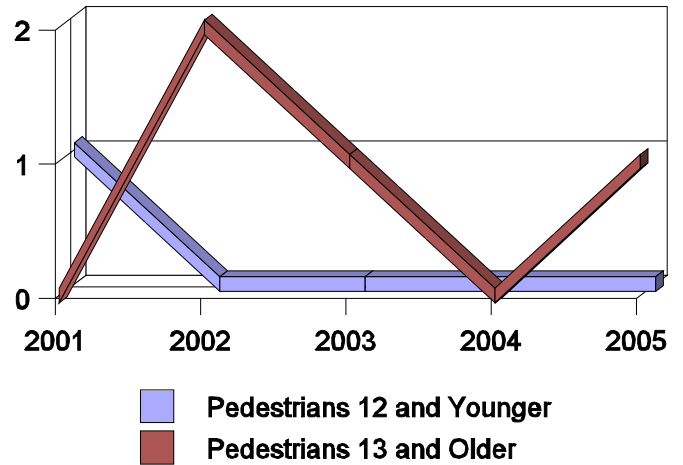
Alcohol-Involved Drivers in Crashes in Mora County, 2005 by Age and Sex



**Pedestrian Crashes in Mora County
by Pedestrian Alcohol Involvement**



**Pedestrian Crashes in Mora County
by Age Group**



'Teenagers' and Young Adults in Crashes in Mora County by Vehicle Type, 2005

Vehicle	'Teenage' Drivers			Young Adult Drivers		
	Total	Fatal	Injury	Total	Fatal	Injury
Passenger car	11	0	5	9	0	4
Pickup	3	0	2	4	0	2
Unknown	0	0	0	1	0	1
Total	14	0	7	14	0	7

'Teenagers' and Young Adults in Crashes in Mora County, 1996-2005

Year	'Teenagers'				Young Adults			
	All Crashes		Alcohol Crashes		All Crashes		Alcohol Crashes	
	Killed	Injured	Killed	Injured	Killed	Injured	Killed	Injured
2005	0	9	0	0	0	8	0	0
2004	0	11	0	3	1	7	1	2
2003	1	11	1	0	0	9	0	2
2002	0	16	0	4	0	12	0	0
2001	0	1	0	1	0	9	0	1
2000	0	18	0	4	0	10	0	2
1999	1	24	1	2	0	7	0	4
1998	0	16	0	0	0	10	0	3
1997	0	19	0	5	0	17	0	5
1996	2	14	0	0	0	6	0	0