

Taos County Report, 2005

Demographics

In 2005, there were 24,212 licensed drivers in Taos County. Of these, there were 12,312 females and 11,900 males. The population in Taos County was 31,722. The total number of crashes in 2005 was 667, yielding a crash rate of 21 per thousand people (the total number of crashes 667 divided by the population 31,722 multiplied by 1,000). The corresponding rate for the state was 25 per thousand people.

General Crash Information

Since 1996 the number of crashes has shown no consistent pattern. Fatal and injury crashes have also shown no consistent pattern since 1996. Belt usage (as a percentage) has decreased from last year, while belt usage in crashes involving visible and incapacitating injuries has also decreased.

Alcohol-related Crash Information

Information about alcohol-involved crashes is included in all sections of this report. Of the 97 people convicted of DWI in Taos County in 2005, 54 percent were first-time DWI convictions (number of first convictions 52 divided by the total number of people convicted 97 multiplied by 100). The corresponding percentage for the state was 61.

Crash Specifics

Crashes involving other vehicles were the most common class, accounting for 62 percent of all crashes. Crashes involving overturns and other vehicles were the most common crash classes which resulted in fatalities. Passenger cars were the vehicle type most often involved in crashes, accounting for 47 percent of all vehicles in crashes. Pickups accounted for 24 percent of vehicles involved in crashes. Together these two vehicle types comprised 69 percent of the vehicles involved in injury crashes. The three most common top contributing factors were following too close, driver inattention, and failing to yield. There were eight fatal crashes in 2005. The most common top contributing factor for the fatal crashes was alcohol involvement.

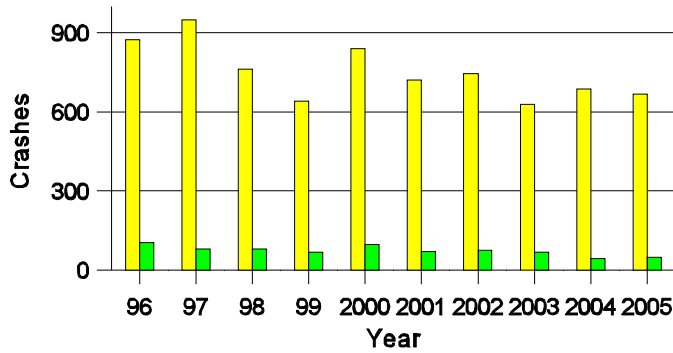
People in Crashes

Overall, males were 58 percent of drivers in crashes, although they account for only 49 percent of licensed drivers in Taos County. There were four pedestrians involved in crashes. In 2005, no 'teenagers' and one young adult were killed in crashes in Taos County. Statewide 17 percent of alcohol-involved drivers were under 21; in Taos County 16 percent were under 21.

Note: The 1999 crash file contains 15% fewer crashes than the 1998 file. This may be due to problems implementing the new system after the old system failed, or to under reporting. Care should be used in interpreting differences between 1999 and other years in this report.

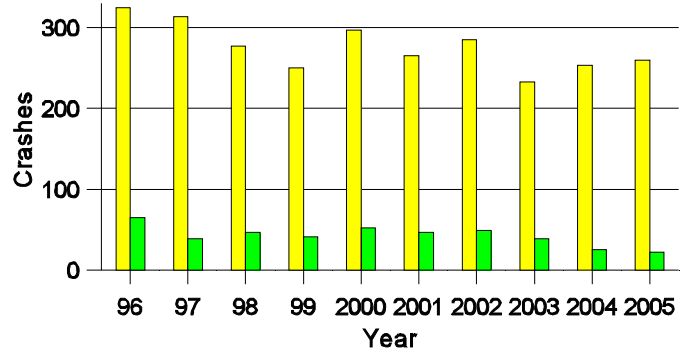
- Location of arrest/conviction was determined by police agency/court location, not driver residence.
- Crashes and drivers were counted by the city of occurrence/residence.
- Population was counted according to the Census definition, using 2005 estimates.
- Young adults are people between the ages of 20 and 24.
- 'Teenagers' are people between the ages of 15 and 19.
- Tables only include variable values for which there are data.

Crashes in Taos County by Alcohol Involvement



All Crashes
 Alcohol-involved Crashes

Fatal and Injury Crashes in Taos County by Alcohol Involvement



All Fatal and Injury Crashes
 Alcohol-involved Fatal and Injury Crashes

Passenger Vehicle Seatbelt Usage and Injuries in Taos County, 2003-2005

Injury Level	2005		2004		2003	
	Total	No Belt	Total	No Belt	Total	No Belt
Killed	5	3	7	2	4	3
Incapacitating injury	18	4	22	3	34	9
Visible injury	64	11	85	9	67	14
Complaint of injury	248	5	198	6	186	4
Unhurt	1,079	22	1,198	14	1,096	28
Total	1,414	45	1,510	34	1,387	58

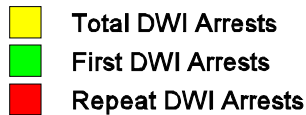
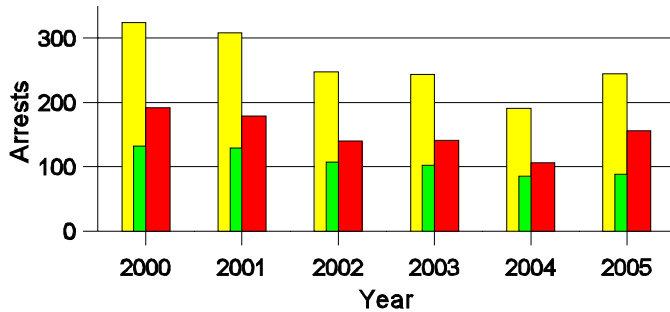
Lifetime DWI Convictions for Drivers Convicted of DWI Violations in Taos County, 2005

Convictions	Since 2000	Since 1981
1st	78	52
2nd	14	21
3rd	4	14
4th	1	7
5th	0	1
6th	0	1
7th	0	1
8th	0	0
9th	0	0
10 or more	0	0
Total	97	97

Convictions are counts of people convicted of DWI by 7/2006 for violations in 2005 in Taos County.
 Convictions are not comparable to arrests.

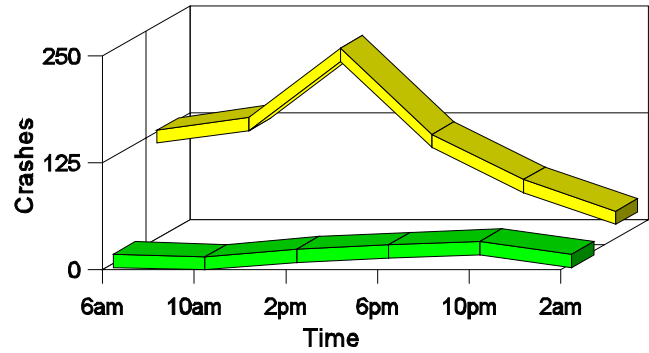
DWI Arrests in Taos County

Showing First Arrests and Repeat Offenders



Crashes in Taos County

by Hour and Alcohol Involvement



Crashes in Taos County by Class, 2005

Class	Crashes					People	
	Total	% of Total	Fatal	% of Fatal	Injury	Killed	Injured
Other vehicle	414	62	2	25	166	2	274
Pedestrian	4	1	1	13	2	1	2
Fixed object	81	12	0	0	30	0	36
Parked vehicle	27	4	0	0	1	0	1
Overturn	63	9	4	50	34	4	50
Other non-collision	19	3	1	13	5	1	7
Pedalcyclist	9	1	0	0	8	0	8
Animal	45	7	0	0	5	0	5
Other object	5	1	0	0	1	0	1
Total	667	100	8	100	252	8	384

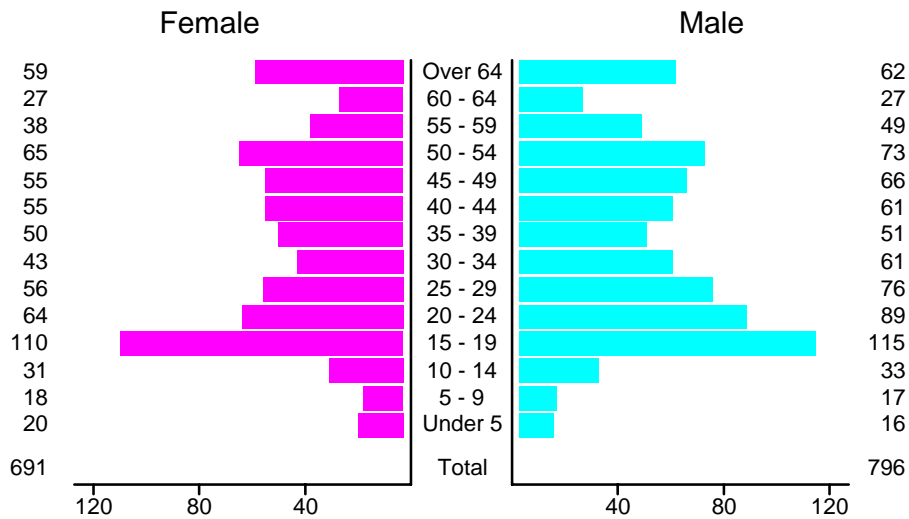
Crashes in Taos County by Vehicle Type, 2005

Vehicle Type	Vehicles					People	
	Total	% of Total	Fatal	% of Fatal	Injury	Killed	Injured
Passenger car	550	47	1	9	220	1	210
Pickup	275	24	3	27	95	2	52
Semi	17	1	1	9	6	0	3
Bus	4	0	0	0	1	0	1
Motorcycle	26	2	0	0	24	0	26
Pedalcyclist	9	1	0	0	8	0	8
Pedestrian	4	0	1	9	2	1	2
Van/4 WD	225	19	4	36	88	4	77
Other	5	0	1	9	1	0	2
Unknown	44	4	0	0	9	0	3
Total	1,159	100	11	100	454	8	384

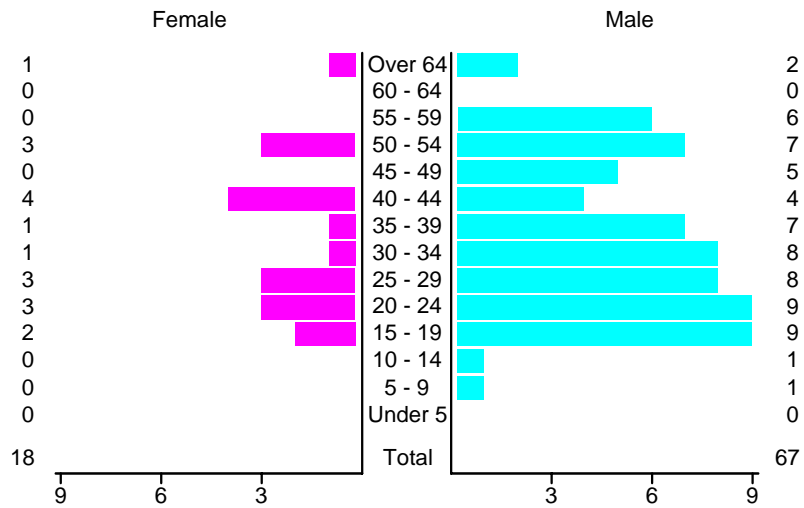
Crashes in Taos County by Top Contributing Factor, 2005

Contributing Factor	Crashes					People	
	Total	% of Total	Fatal	% of Fatal	Injury	Killed	Injured
Alcohol involvement	48	7	5	63	18	5	30
Red light running	25	4	0	0	15	0	26
Failing to yield	102	15	1	13	37	1	56
Excessive speed	85	13	2	25	40	2	64
Driving left of center	12	2	0	0	7	0	12
Following too close	138	21	0	0	63	0	96
Improper turning	16	2	0	0	4	0	8
Improper overtaking	7	1	0	0	2	0	2
Improper backing	20	3	0	0	0	0	0
Mechanical defect	14	2	0	0	5	0	8
Driver inattention	128	19	0	0	47	0	66
Other	72	11	0	0	14	0	16
Total	667	100	8	100	252	8	384

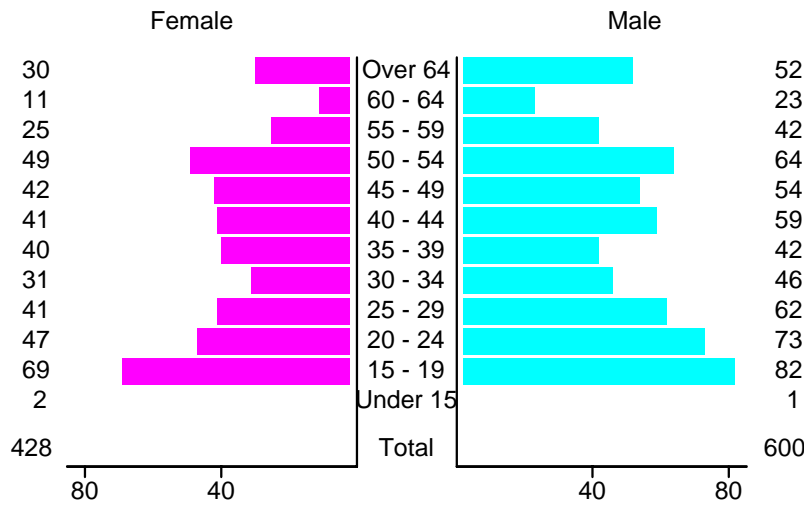
People in Crashes by Age and Sex in Taos County, 2005



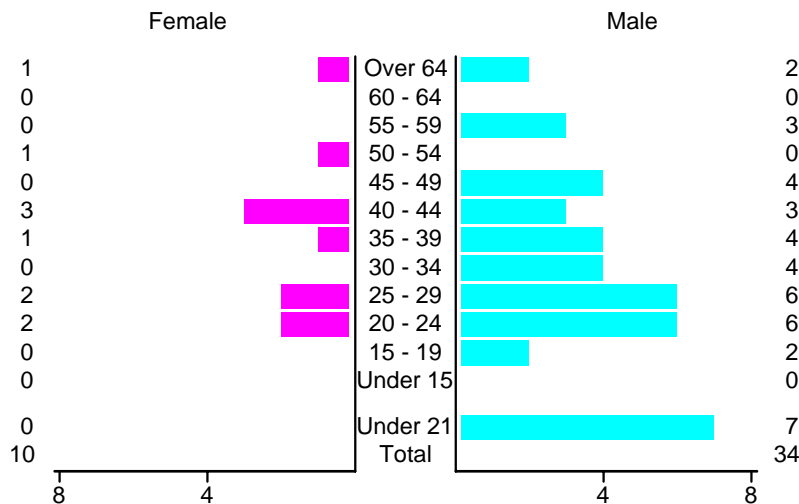
People in Alcohol-Involved Crashes in Taos County, 2005 by Age and Sex



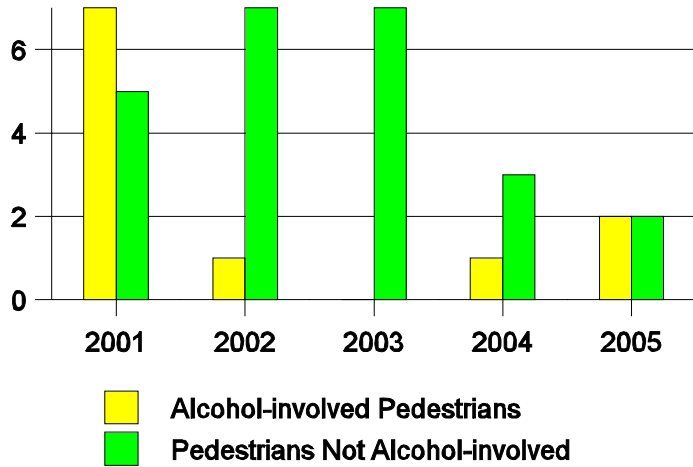
Drivers in Crashes by Age and Sex in Taos County, 2005



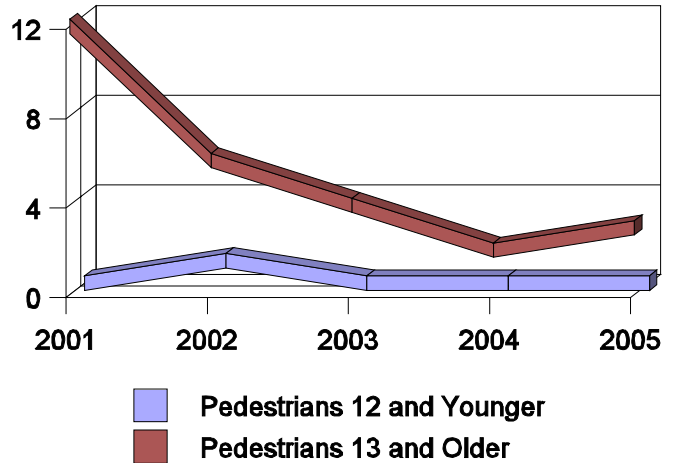
Alcohol-Involved Drivers in Crashes in Taos County, 2005 by Age and Sex



**Pedestrian Crashes in Taos County
by Pedestrian Alcohol-involvement**



**Pedestrian Crashes in Taos County
by Age Group**



'Teenagers' and Young Adults in Crashes in Taos County by Vehicle Type, 2005

Vehicle	'Teenage' Drivers			Young Adult Drivers		
	Total	Fatal	Injury	Total	Fatal	Injury
Passenger car	95	0	37	77	0	30
Pickup	27	0	10	19	0	12
Semi	0	0	0	2	0	2
Motorcycle	0	0	0	3	0	3
Pedestrian	0	0	0	1	1	0
Van/4 WD	29	0	13	15	0	5
Unknown	1	0	1	4	0	2
Total	152	0	61	121	1	54

'Teenagers' and Young Adults in Crashes in Taos County, 1996-2005

Year	'Teenagers'				Young Adults			
	All Crashes		Alcohol Crashes		All Crashes		Alcohol Crashes	
	Killed	Injured	Killed	Injured	Killed	Injured	Killed	Injured
2005	0	49	0	7	1	33	1	4
2004	2	55	2	9	1	45	1	5
2003	0	44	0	5	2	42	1	9
2002	0	73	0	13	1	43	1	9
2001	2	60	2	5	2	39	1	12
2000	2	85	2	19	3	56	2	6
1999	0	55	0	10	0	36	0	10
1998	0	70	0	18	1	41	1	9
1997	0	83	0	7	1	39	0	6
1996	1	99	0	24	1	43	1	7